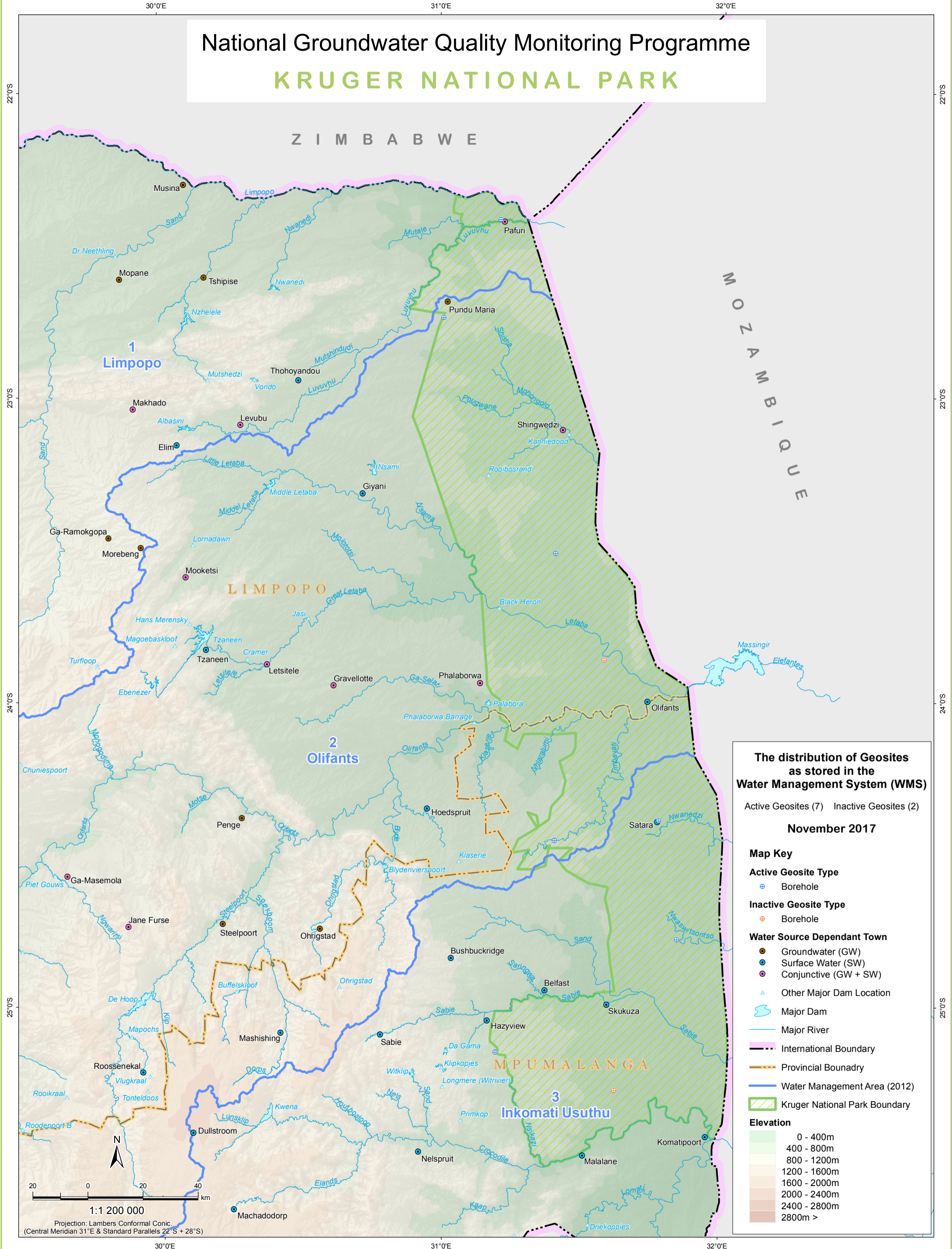


National Groundwater Quality Monitoring Programme

KRUGER NATIONAL PARK



The distribution of Geosites as stored in the Water Management System (WMS)

Active Geosites (7) Inactive Geosites (2)

November 2017

Map Key

Active Geosite Type

- Borehole

Inactive Geosite Type

- Borehole

Water Source Dependant Town

- Groundwater (GW)
- Surface Water (SW)
- Conjunctive (GW + SW)
- Other Major Dam Location

Major Dam

Major River

International Boundary

Provincial Boundary

Water Management Area (2012)

Kruger National Park Boundary

Elevation

- 0 - 400m
- 400 - 800m
- 800 - 1200m
- 1200 - 1600m
- 1600 - 2000m
- 2000 - 2400m
- 2400 - 2800m
- 2800m >

Data sources:
 Towns, Rivers, Dams, Elevation and International Boundaries - Department of Rural Development and Land Reform, Chief Directorate: National Geospatial Information (NGI); National Groundwater Archive (NGA) & Water Management Areas - Department of Water & Sanitation, Directorate: Surface & Groundwater Information; Water Management System (WMS) - Department of Water & Sanitation, Directorate: Recourse Quality Information Services (RQIS).

Map produced by:
 Department of Water & Sanitation: Directorate: Spatial & Land Information Management (SLIM);
 Sub-Directorate: Geographic Information and Archiving (GI&A) - Cartographic Services section.
 Map Date: April 2018 (Ref: GM17_412)