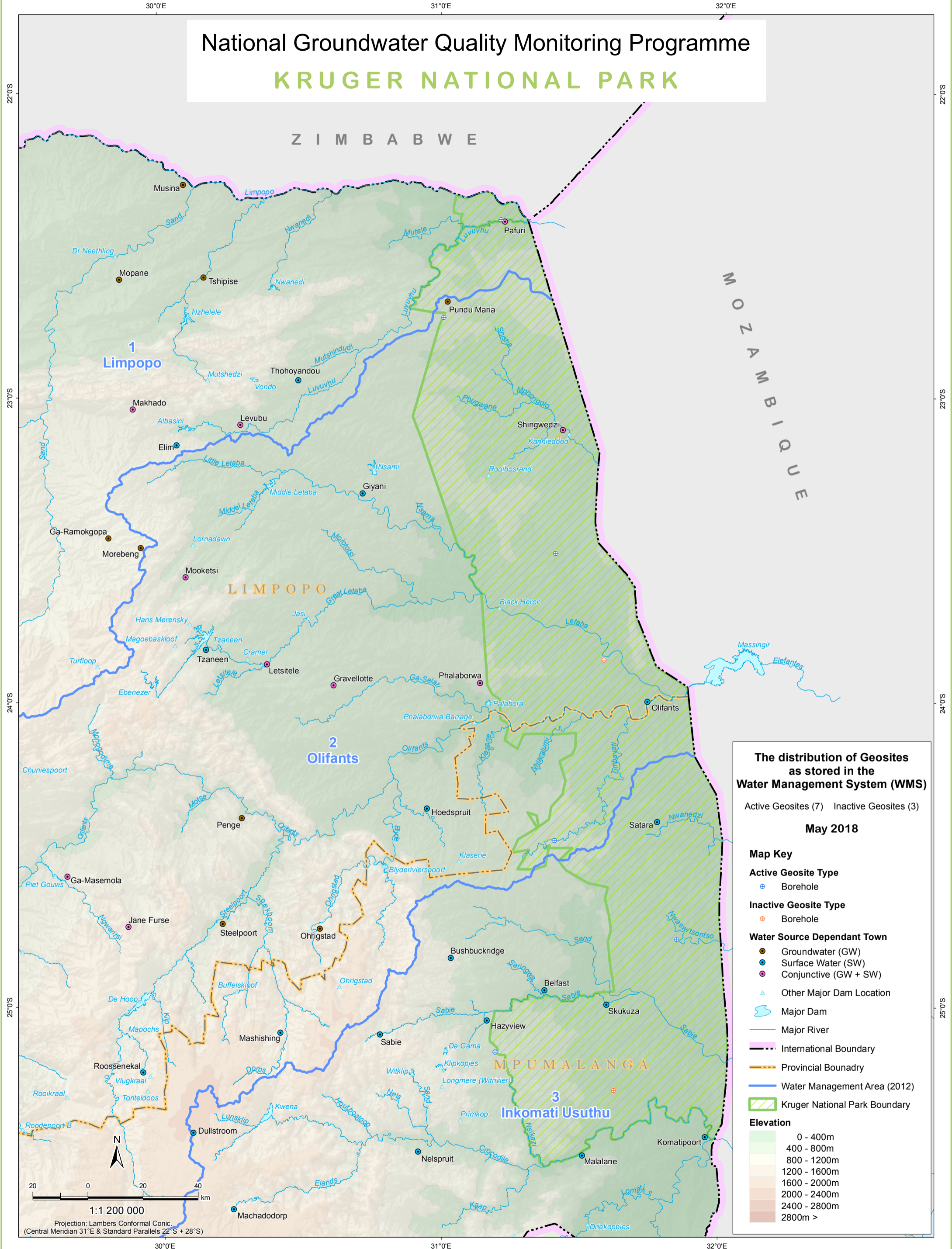


# National Groundwater Quality Monitoring Programme

## KRUGER NATIONAL PARK



**The distribution of Geosites as stored in the Water Management System (WMS)**

Active Geosites (7) Inactive Geosites (3)

**May 2018**

**Map Key**

**Active Geosite Type**

- Borehole

**Inactive Geosite Type**

- Borehole

**Water Source Dependant Town**

- Groundwater (GW)
- Surface Water (SW)
- Conjunctive (GW + SW)
- Other Major Dam Location

Major Dam

Major River

International Boundary

Provincial Boundary

Water Management Area (2012)

Kruger National Park Boundary

**Elevation**

- 0 - 400m
- 400 - 800m
- 800 - 1200m
- 1200 - 1600m
- 1600 - 2000m
- 2000 - 2400m
- 2400 - 2800m
- 2800m >

Data sources:  
 Towns, Rivers, Dams, Elevation and International Boundaries - Department of Rural Development and Land Reform, Chief Directorate: National Geospatial Information (NGI); National Groundwater Archive (NGA) & Water Management Areas - Department of Water & Sanitation, Directorate: Surface & Groundwater Information; Water Management System (WMS) - Department of Water & Sanitation, Directorate: Recourse Quality Information Services (RQIS).

Map produced by:  
 Department of Water & Sanitation: Directorate: Spatial & Land Information Management (SLIM);  
 Sub-Directorate: Geographic Information and Archiving (GI&A) - Cartographic Services section.  
 Map Date: Aug 2018 (Ref: GM18\_306)