

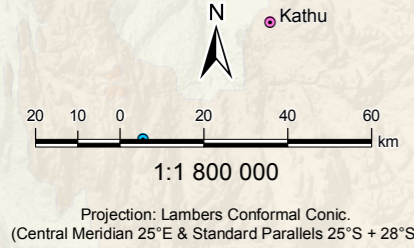
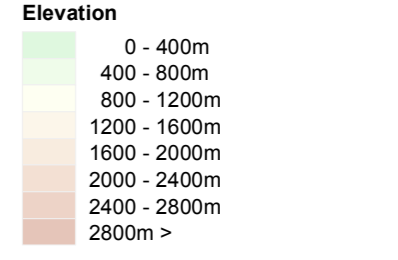
National Groundwater Quality Monitoring Programme

NORTH WEST



The distribution of Geosites as stored in the Water Management System (WMS)
 Active Geosites (12) Inactive Geosites (40)
May 2018

- Map Key**
- Active Geosite Type**
 - Borehole
 - Inactive Geosite Type**
 - Borehole
 - Spring
 - Water Source Dependant Town**
 - Groundwater (GW)
 - Surface Water (SW)
 - Conjunctive (GW + SW)
 - Other Major Dam Location
 - Major Dam
 - Major River
 - International Boundary
 - Provincial Boundary
 - Water Management Area 2012



Data sources:
 Towns, Rivers, Dams, Elevation and International Boundaries - Department of Rural Development and Land Reform, Chief Directorate: National Geospatial Information (NGI); National Groundwater Archive (NGA) & Water Management Areas - Department of Water & Sanitation, Directorate: Surface & Groundwater Information; Water Management System (WMS) - Department of Water & Sanitation, Directorate: Recourse Quality Information Services (RQIS).

Map produced by:
 Department of Water & Sanitation: Directorate: Spatial & Land Information Management (SLIM); Sub-Directorate: Geographic Information and Archiving (GI&A) - Cartographic Services section.
 Map Date: Aug 2018 (Ref: GM18_306)

