

# National Groundwater Quality Monitoring Programme

## NATIONAL OFFICE

### The distribution of Geosites as stored in the Water Management System (WMS)

Active Stations (24) Inactive Stations (12)

November 2017

#### Map Key

##### Active Geosite Type

- ⊕ Borehole
- Spring

##### Inactive Geosite Type

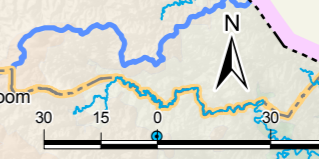
- ⊕ Borehole
- Spring

##### Water Source Dependant Town

- Groundwater (GW)
- Surface Water (SW)
- Conjunctive (GW + SW)
- ▲ Other Major Dam Location
- ▬ Major Dam
- ▬ Major River
- - - International Boundary
- ▬ Provincial Boundary
- ▬ Water Management Area (2012)

##### Elevation

- 0 - 400m
- 400 - 800m
- 800 - 1200m
- 1200 - 1600m
- 1600 - 2000m
- 2000 - 2400m
- 2400 - 2800m
- 2800m >



Data sources: Towns, Rivers, Dams, Elevation and International Boundaries - Department of Rural Development and Land Reform, Chief Directorate: National Geospatial Information (NGI); National Groundwater Archive (NGA) & Water Management Areas - Department of Water & Sanitation, Directorate: Surface & Groundwater Information; Water Management System (WMS) - Department of Water & Sanitation, Directorate: Recourse Quality Information Services (RQIS).

Map produced by: Department of Water & Sanitation: Directorate: Spatial & Land Information Management (SLIM); Sub-Directorate: Geographic Information and Archiving (GI&A) - Cartographic Services section. Map Date: April 2018 (Ref: GM17\_412)