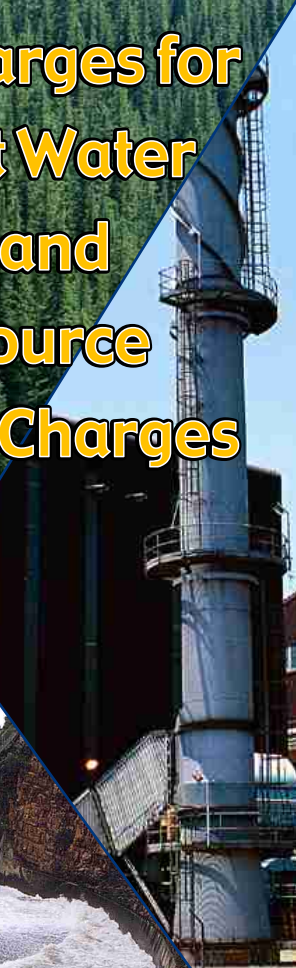
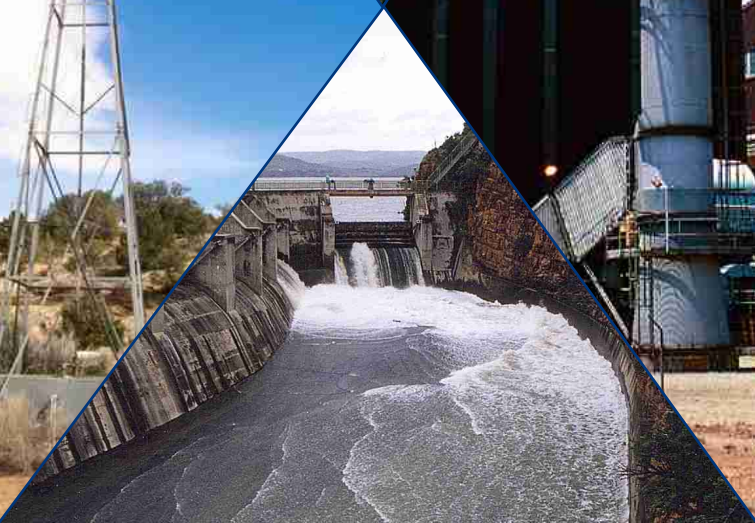


# Water Use Charges for Government Water Schemes and Water Resource Management Charges



**2004/2005**  
**Eastern Cape Region**



**Your partner in building  
a better life for all**

[www.dwaf.gov.za](http://www.dwaf.gov.za)

**PROUDLY  
SOUTH AFRICAN**





# Preface

Included in this brochure are schedules containing Water Resource Management and Water Consumptive charges that will come into effect from 1 April 2004.

Before announcing these charges a series of consultations were held by the top management of the Department of Water Affairs and Forestry (DWAf), with key national stakeholders including amongst others SALGA, SAAWU, TAU, NAFU, Agri-SA and Forestry SA.

The consultation meetings led to a better understanding of the practical implementation of the Department's Raw Water Pricing Strategy and the drivers necessitating charge increases. The charges set out in these tables have been amended with respect to a number of issues raised at the consultation meetings, but do not represent a consensus position of stakeholders and DWAf. The charges have been determined by DWAf in accordance with the mandate of the National Water Act and the Raw Water Pricing Strategy.

In order to improve the process of further consultations, it was agreed that future discussions on water charge increases will be held well in advance of announcement dates. This will enable stakeholders to properly consult with their members and make meaningful recommendations to the Department.

It was further agreed that DWAf will, during the 2004/5 financial year, initiate a process of reviewing the Raw Water Pricing Strategy. It is intended that the review of this strategy will be completed in time for the 2006/7 charges to be based on the revised strategy. Because of the requirements for public consultation it is not possible to finalise the revision in time to influence the 2005/6 charges which will, therefore, still be calculated under the existing strategy.



Mike Muller  
Director-General

DEPARTMENT OF WATER AFFAIRS AND FORESTRY

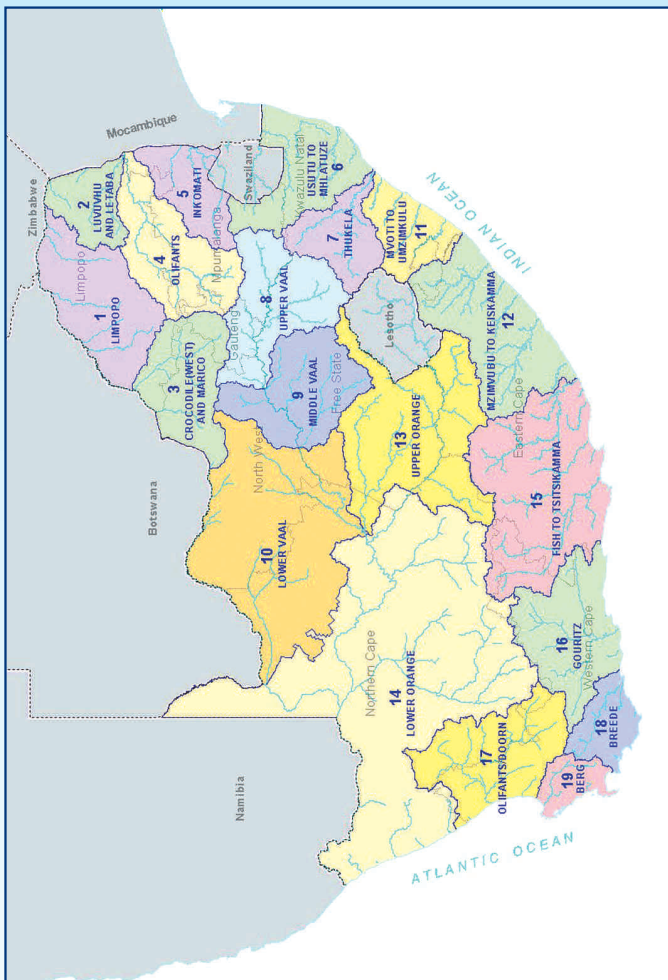
# Summary of sectoral Water Resource Management Charges per Water Management Area

WATER MANAGEMENT AREA		SECTORAL UNIT COST IN C/M <sup>3</sup>		
No	Water Management Area	Domestic/ Industrial	Agriculture: Irrigation and watering livestock	Forestry
1	LIMPOPO	1.23	0.89	0.83
2	LUVUVHU AND LETABA	1.60	1.07	0.98
3	CROCODILE (W) & MARICO	0.85	0.70	0.68
4	OLIFANTS	0.89	0.75	0.70
5	INKOMATI	0.85	0.63	0.57
6	USUTU TO MHLATHUZE	0.42	0.42	0.41
7	THUKELA	0.34	0.34	0.33
8	UPPER VAAL	1.30	0.79	0.79
9	MIDDLE VAAL	0.98	0.80	N/A
10	LOWER VAAL	0.69	0.56	N/A
11	MVOTI TO UMZIMKULU	0.91	0.87	0.84
12	MZIMVUBU TO KEISKAMMA	0.97	0.67	0.56
13	UPPER ORANGE	0.38	0.38	N/A
14	LOWER ORANGE	0.62	0.47	N/A
15	FISH TO TSITSIKAMMA	1.45	0.61	0.38
16	GOURITZ	2.11	0.72	0.56
17	OLIFANTS / DOORN	1.16	0.70	0.64
18	BREEDE	2.64	0.64	0.41
19	BERG	3.25	0.76	0.61
	<b>Average</b>	<b>1.19</b>	<b>0.67</b>	<b>0.61</b>

ALL CHARGES EXCLUDE VAT

C/M<sup>3</sup> (cent per cubic metre)

# Map of the Water Management Areas and provincial borders



## How to convert cents per m<sup>3</sup> to Rand per hectare

The charges listed in the table for irrigation purposes are provided in cents per m<sup>3</sup>. Should you wish to convert it to Rand per hectare, please follow the instructions below:

Take the total charge in cent per m<sup>3</sup> and divide it by 100. Take the answer and multiply it with the m<sup>3</sup> quota per hectare to get to the Rand per hectare amount. *For example see next page:*

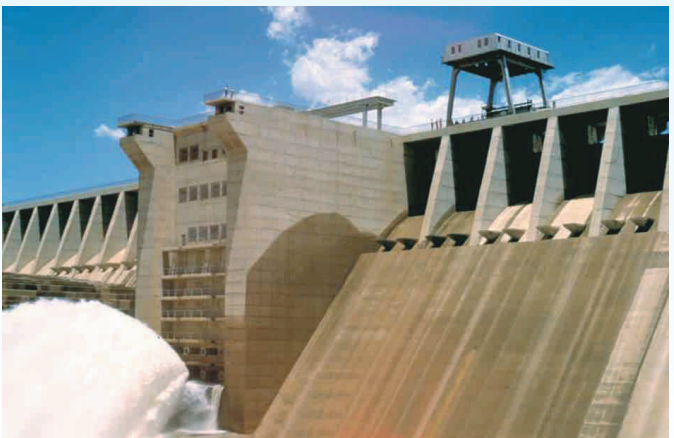
## For example:

Total Charge: 3.70 cent per m<sup>3</sup> /100 = R 0.037 per m<sup>3</sup>

Total charge R 0.037 per m<sup>3</sup> x 3 000 (m<sup>3</sup> quota of water per hectare) = R111 per hectare

## Understanding the abbreviations

<b>WMA</b>	Water Management Area A map of the Water Management Areas is printed in this document for easy identification.
<b>m<sup>3</sup></b>	Cubic metre
<b>Ha</b>	Hectare
<b>B</b>	Bi-annually
<b>A</b>	Annually
<b>TBA</b>	To be advised
<b>Billing Fre</b>	Billing Frequency



WMA (refer map)	Foot Notes	Government Water Scheme Name	Scheme Management Parameter	Charges For Irrigation Purposes			Charges For Domestic and Industrial use
				m <sup>3</sup> Quota Per Ha	Charge - Cent Per Cubic Metre	Billing Fre.	
12		AMATOLA (WRIGGLESWADE DAM)	CANAL				65.15
12		AMATOLA (WRIGGLESWADE DAM)	FROM THE DAM AND KUBUSI RIVER				65.15
12		AMATOLA (WRIGGLESWADE DAM)	RIVER				65.15
12		BINFIELD PARK DAM (EASTERN CAPE)	SCHEME	6100	3.41	B	66.21
12		BIZANA (BIZANA DAM)	RAW WATER FROM THE DAM				53.00
16		BRAND RIVER (MIERTJIESKRAAL DAM)	DAM	7000	5.78	B	
16	SERV	BUFFALO RIVER (FLORISKRAAL-DAM)	C VAN WYK PREFERENTIAL RIGHT	7620	1.23	B	
16		BUFFALO RIVER (FLORISKRAAL-DAM)	SCHEME	7620	1.23	B	
12		BUSHMANSKRANTZ DAM	SCHEME (NO OTHER DIFFERENTIATORS HAVE BEEN IDENTIFIED)				74.14
13		CALEDON RIVER (WELBEDACHT DAM, RUSTFONTEIN DAM AND KNELLPOORT DAM)	BLOEM WATER [RAW WATER FROM RIVER AND DAMS]				17.29
13	SERV	CALEDON RIVER (WELBEDACHT DAM, RUSTFONTEIN DAM AND KNELLPOORT DAM)	BLOEMFONTEIN MUNICIPALITY [RAW WATER FROM MODDER RIVER]				17.29
12		CORANA (CORANA DAM)	RAW WATER FROM THE DAM				74.14
16		CORDIERS RIVER (OUKLOOF DAM)	DAM	9000	4.02	B	
12		DABI DAM	DAM				74.14
12		DEBE DAM	DAM				74.14
12		DOORN RIVER (DOORN RIVER DAM)	DAM	6100	14.50	B	44.89
16		DUIVENHOKS RIVER (DUIVENHOKS DAM)	FROM DUIVENHOKS RIVER (DUIVENHOKS DAM)	6000	0.87	B	2.75

WMA (refer map)		Foot Notes	Government Water Scheme Name	Scheme Management Parameter	Charges For Irrigation Purposes			Charges For Domestic and Industrial use
					m <sup>3</sup> Quota Per Ha	Charge - Cent Per Cubic Metre	Billing Fre.	Charge - Cent Per Cubic Metre
15			FISH-SUNDAYS RIVER	FROM DARLINGTON DAM TO KORHAANSDRIFT WEIR	9000	4.01	B	
15			FISH-SUNDAYS RIVER	FROM DE MISTKRAAL WEIR TO DARLINGTON DAM	12500	3.89	B	
15			FISH-SUNDAYS RIVER	FROM DE MISTKRAAL WEIR TO JUNCTIONDRIFT	12500	3.57	B	
15			FISH-SUNDAYS RIVER	FROM ELANDSDRIFT DAM TO HERMANUSKRAAL WEIR AND KLIPFONTEIN IRRIGATION BOARD	12500	2.46	B	
15			FISH-SUNDAYS RIVER	FROM ELANDSDRIFT WEIR TO DE MISTKRAAL WEIR	12500	2.97	B	19.89
15	SERV		FISH-SUNDAYS RIVER	FROM GRASS RIDGE DAM TO ELANDSDRIFT WEIR FOR INXUBA YETHEMBA MUNICIPALITY (CRADOCK)				19.89
15			FISH-SUNDAYS RIVER	FROM GRASS RIDGE DAM TO ELANDSDRIFT WEIR FOR OTHER USERS	13500	2.18	B	6.49
15			FISH-SUNDAYS RIVER	FROM TEEBUS-OUTLET TO GRASS RIDGE DAM	13500	2.11	B	
16			GAMKA RIVER (BEAUFORT WEST DAM)	DAM				53.85
16			GAMKA RIVER (GAMKA-POORT DAM)	DAM	7900	2.67	B	
15			GAMTOOS RIVER (KOUGA AND LOERIE DAMS)	CANAL	8000	1.00	B	6.91
15			GAMTOOS RIVER (KOUGA AND LOERIE DAMS)	DAM				36.68
16			GOUKOU RIVER (GROOTBOS-BERG DAM)	DAM	7000	1.05	B	
15			GROOT RIVER (BEERVLEI DAM)	DAM	11900	1.35	A	
16			HARTENBOS RIVER (HARTBEEKKUIL DAM)	FROM THE DAM	6000	2.63	B	11.27
16			KAMANASSIE RIVER (KAMANASSIE DAM)	SCHEME	6500	1.14	B	
15			KAT RIVER (KAT RIVER DAM)	DAM	6100	5.36	B	83.29
12			KEISKAMMAHOEK (CATA DAM)	SCHEME (NO OTHER DIFFERENTIATORS HAVE BEEN IDENTIFIED)	6100	7.48	B	



WMA (refer map)	Foot Notes	Government Water Scheme Name	Scheme Management Parameter	Charges For Irrigation Purposes			Charges For Domestic and Industrial use
				m <sup>3</sup> Quota Per Ha	Charge - Cent Per Cubic Metre	Billing Fre.	
12		KEISKAMMAHOEK (MNYAMENI DAM)	SCHEME	6100	5.78	B	74.14
13		KGABANAYANE RIVER (GROOTHOEK DAM)	BLOEM WATER				63.13
12		KLIPPLAAT RIVER (WATERDOWN DAM)	DAM	6100	3.42	B	11.59
16		KORENTE-VETTE RIVER (KORENTE-VETTE DAM)	CANAL	7000	0.67	B	5.17
16		KORENTE-VETTE RIVER (KORENTE-VETTE DAM)	FROM THE DAM				2.56
15		KROMME RIVER (IMPOFU DAM)	SCHEME				36.68
12		KUBUSI RIVER (GUBU DAM)	SCHEME				25.51
12		KWABHACA (NTENETYANE DAM)	RAW WATER FROM THE DAM				74.14
12		LAING DAM	DAM				65.15
13		LEEU RIVER (ARMENIA DAM)	RAW WATER FROM THE CANAL SYSTEM	6100	0.18	B	
13		LEEU RIVER (ARMENIA DAM)	RAW WATER FROM THE DAM AND RIVER	6100	0.18	B	3.38
16		LEEU RIVER (LEEU-GAMKA DAM)	SCHEME	11000	1.97	B	
12		LIBODE (MHLANGA DAM)	RAW WATER FROM THE DAM				74.14
15		LOWER FISH RIVER	CANAL/PIPELINE	12500	5.52	B	18.07
15		LOWER FISH RIVER	DAM				18.07
14		LOWER ORANGE/NAMAQUALAND	RESOURCE POOR FARMERS - SECTION OF LOWER ORANGE BETWEEN BOEGOEBERG AND THE SEA [Commence 2001/2]		1.05	B	
14		LOWER ORANGE/NAMAQUALAND	RESOURCE POOR FARMERS - SECTION OF LOWER ORANGE BETWEEN BOEGOEBERG AND THE SEA [Commence 2002/3]		1.05	B	
14		LOWER ORANGE/NAMAQUALAND	RESOURCE POOR FARMERS - SECTION OF LOWER ORANGE BETWEEN BOEGOEBERG AND THE SEA [Commence 2003/4]		1.05	B	

WMA (refer map)		Foot Notes	Government Water Scheme Name	Scheme Management Parameter	Charges For Irrigation Purposes			Charges For Domestic and Industrial use
					m <sup>3</sup> Quota Per Ha	Charge - Cent Per Cubic Metre	Billing Fre.	Charge - Cent Per Cubic Metre
14			LOWER ORANGE/NAMAQUALAND	SECTION OF LOWER ORANGE BETWEEN BOEGOEBERG AND THE SEA		1.05	B	4.96
15			LOWER SUNDAYS RIVER	CANAL	9000	3.96	B	
15			LOWER SUNDAYS RIVER	PIPELINE	9000	5.61	B	
15	SERV		LOWER SUNDAYS RIVER	SCHEEPERSVLAKTE BALANCING DAM				36.68/54.85 *
12			LUSIKISIKI (XURA WEIR)	RAW WATER FROM THE DAM				53.00
12			MACUBENI DAM	RAW WATER FROM THE DAM				74.14
12			MALUTI (BELFORT DAM)	RAW WATER FROM THE DAM				74.17
11			MDLOTI RIVER GWS (HAZELMERE DAM)	SCHEME			B	52.93
12			MHLAHLANE (MABALENI DAM)	RAW WATER FROM THE DAM				47.41
14			MIDDLE ORANGE	LOWER ORANGE BETWEEN DOUGLAS & BOEGOEBERG		1.05	B	4.96
14			MIDDLE ORANGE	ORANGE VAAL WUA (DOUGLAS CANALS)		1.05	B	
14	SERV		MIDDLE ORANGE	PRIESKA MUNICIPALITY (RAW WATER ABSTRACTED FROM ANY OF THE DAMS AS WELL AS THE ORANGE RIVER)				4.96
14			MIDDLE ORANGE	RESOURCE POOR FARMERS - (LOWER ORANGE BETWEEN DOUGLAS & BOEGOEBERG) [Commence 2002/3]		1.05	B	
14			MIDDLE ORANGE	RESOURCE POOR FARMERS - (LOWER ORANGE BETWEEN DOUGLAS & BOEGOEBERG) [Commence 2003/4]		1.05	B	
13			MODDER RIVER (KRUGERSDRIFT DAM)	RAW WATER FROM THE DAM AND RIVER				4.90
13			MODDER RIVER (KRUGERSDRIFT DAM)	ZONE 1: WATER ABSTRACTED FROM THE RIVER (KRUGERSDRIFT DAM UP TO RYANSDALE/KALKBANK)	8130	3.56	B	
13			MODDER RIVER (KRUGERSDRIFT DAM)	ZONE 2: WATER ABSTRACTED FROM THE RIVER (RYANSDALE/KALKBANK UP TO SCHOLTZBURG WEIR)	8640	3.56	B	
16			MOSSSEL BAY - KLIPHEUWEL DAM	SCHEME				74.10

\* 36.68 (tariff applicable for volume 13 500 000 m<sup>3</sup> and lower) and 54.85 (tariff applicable for volume 13 500 001 m<sup>3</sup> and higher)

WMA (refer map)		Foot Notes	Government Water Scheme Name	Scheme Management Parameter	Charges For Irrigation Purposes			Charges For Domestic and Industrial use
					m <sup>3</sup> Quota Per Ha	Charge - Cent Per Cubic Metre	Billing Fre.	Charge - Cent Per Cubic Metre
16			MOSSEL BAY - WOLLWEDANS DAM	FROM THE MOSSEL BAY - WOLWEDANS DAM (BOLTONS & MOSSREF EXCLUDED)		7.67		74.10
16	SERV		MOSSEL BAY - WOLWEDANS DAM	TO BOLTONS FROM THE MOSSEL BAY - WOLWEDANS DAM				74.10
16	SERV		MOSSEL BAY - WOLWEDANS DAM	TO MOSSREF FROM THE MOSSEL BAY - WOLWEDANS DAM				74.10
12			NAHOON RIVER (NAHOON DAM)	DAM				65.15
12			NCORA (NCORA DAM)	SCHEME		3.53	B	44.73
16			OLIFANTS RIVER (STOMPDRIFT DAM)	FROM SCHEME FOR STAGE 1	5300	1.21	B	
16			OLIFANTS RIVER (STOMPDRIFT DAM)	FROM SCHEME FOR STAGE 2	2360	1.21	B	
16			OLIFANTS RIVER (STOMPDRIFT DAM)	FROM SCHEME FOR STAGE 3	660	1.21	B	
16			OLIFANTS RIVER (STOMPDRIFT DAM)	FROM THE CANAL SYSTEM				37.85
16			OLIFANTS RIVER (STOMPDRIFT DAM)	FROM THE DAM				6.78
14			ORANGE RIVER (BOEGOEBERG DAM)	FROM THE CANAL SYSTEM	15000	1.05	B	4.96
14			ORANGE RIVER (BOEGOEBERG DAM)	FROM THE RIVER	15000	1.05	B	4.96
14			ORANGE RIVER (BOEGOEBERG DAM)	RESOURCE POOR FARMERS - (BOEGOEBERG DAM) [Commence 2001/2]		1.05	B	
14			ORANGE RIVER (BOEGOEBERG DAM)	RESOURCE POOR FARMERS - (BOEGOEBERG DAM) [Commence 2002/3]		1.05	B	
14			ORANGE RIVER (BOEGOEBERG DAM)	RESOURCE POOR FARMERS - (BOEGOEBERG DAM) [Commence 2003/4]		1.05	B	
13	SERV		ORANGE RIVER (GARIEP DAM, VANDERKLOOF DAM AND ORANGE-FISH TUNNEL)	HOPETOWN MUNICIPALITY (RAW WATER ABSTRACTED FROM ANY OF THE DAMS AS WELL AS THE ORANGE RIVER)				4.96
13			ORANGE RIVER (GARIEP DAM, VANDERKLOOF DAM AND ORANGE-FISH TUNNEL)	MIDDLE ORANGE WATER CONTROL AREA (BETWEEN HOPETOWN AND DOUGLAS/MARKSDRIFT)	11000	1.05	B	4.96

WMA (refer map)	Foot Notes	Government Water Scheme Name	Scheme Management Parameter	Charges For Irrigation Purposes			Charges For Domestic and Industrial use
				m <sup>3</sup> Quota Per Ha	Charge - Cent Per Cubic Metre	Billing Fre.	
13		ORANGE RIVER (GARIEP DAM, VANDERKLOOF DAM AND ORANGE-FISH TUNNEL)	RAW WATER PUMPED BY THE DEPARTMENT FROM VANDERKLOOF DAM				38.60
13		ORANGE RIVER (GARIEP DAM, VANDERKLOOF DAM AND ORANGE-FISH TUNNEL)	VANDERKLOOF GOVERNMENT WATER CONTROL AREA (BETWEEN GARIEP DAM AND HOPETOWN)	11000	1.05	B	4.96
14		ORANGE RIVER (KAKAMAS)	CANAL	15000	1.05	B	
14		ORANGE RIVER (KAKAMAS)	FROM THE RIVER	15000	1.05	B	4.96
14		ORANGE RIVER (KAKAMAS)	RESOURCE POOR FARMERS - (KAKAMAS) [Commence 2001/2]		1.05	B	
14		ORANGE RIVER (KAKAMAS)	RESOURCE POOR FARMERS - (KAKAMAS) [Commence 2002/3]		1.05	B	
14		ORANGE RIVER (KAKAMAS)	RESOURCE POOR FARMERS - (KAKAMAS) [Commence 2003/4]		1.05	B	
13		ORANGE RIVER (VANDERKLOOF CANALS)	RAW WATER FROM VANDERKLOOF CANALS	11000	6.27	B	
13		ORANGE-RIET (RIET RIVER SETTLEMENT) AND ORANGE-RIET CANAL	AGANANG: IRRIGATION USE SECTOR FROM VANDERKLOOF MAIN CANAL	11000	1.05	B	
13		ORANGE-RIET (RIET RIVER SETTLEMENT) AND ORANGE-RIET CANAL	COMMERCIAL FARMERS: IRRIGATION USE SECTOR FROM VANDERKLOOF MAIN CANAL	11000	1.05	B	
13		ORANGE-RIET (RIET RIVER SETTLEMENT) AND ORANGE-RIET CANAL	DRIE EENHEID: IRRIGATION USE SECTOR FROM VANDERKLOOF MAIN CANAL	11000	1.05	B	
13		ORANGE-RIET (RIET RIVER SETTLEMENT) AND ORANGE-RIET CANAL	ITERELENG: IRRIGATION USE SECTOR FROM VANDERKLOOF MAIN CANAL	11000	1.05	B	
13		ORANGE-RIET (RIET RIVER SETTLEMENT) AND ORANGE-RIET CANAL	MAHUA TRUST: IRRIGATION USE SECTOR FROM VANDERKLOOF MAIN CANAL	11000	1.05	B	
13		ORANGE-RIET (RIET RIVER SETTLEMENT) AND ORANGE-RIET CANAL	OPPERMANS: IRRIGATION USE SECTOR FROM VANDERKLOOF MAIN CANAL		1.05	B	
13		ORANGE-RIET (RIET RIVER SETTLEMENT) AND ORANGE-RIET CANAL	ORANGE-RIET CANAL SYSTEM				32.15

WMA (refer map)	Foot Notes	Government Water Scheme Name	Scheme Management Parameter	Charges For Irrigation Purposes			Charges For Domestic and Industrial use
				m <sup>3</sup> Quota Per Ha	Charge - Cent Per Cubic Metre	Billing Fre.	
13		ORANGE-RIET (RIET RIVER SETTLEMENT) AND ORANGE-RIET CANAL	PROEFPLAAS: IRRIGATION USE SECTOR FROM VANDERKLOOF MAIN CANAL		1.05	B	Charge - Cent Per Cubic Metre
13		ORANGE-RIET (RIET RIVER SETTLEMENT) AND ORANGE-RIET CANAL	RIET RIVER SETTLEMENT CANAL SYSTEM				37.90
13		ORANGE-RIET (RIET RIVER SETTLEMENT) AND ORANGE-RIET CANAL	ZELPHY: IRRIGATION USE SECTOR FROM VANDERKLOOF MAIN CANAL	11000	1.05	B	
12		OUTSPAN DAM	DAM				74.14
12		PLEASANT VIEW DAM	DAM				38.45
12		QAMATA (LUBISI DAM)	FROM THE CANAL	6100	9.03	B	
13	SERV	RIET RIVER (KALKFONTEIN DAM)	JACOBSDAL MUNICIPALITY (RAW WATER FROM THE KALKFONTEIN CANAL SYSTEM FOR IRRIGATION)	11000	23.32	B	
13	SERV	RIET RIVER (KALKFONTEIN DAM)	KOFFIEFONTEIN MUNICIPALITY (RAW WATER FROM THE KALKFONTEIN CANAL SYSTEM)				23.32
13		RIET RIVER (KALKFONTEIN DAM)	RAW WATER FROM KALKFONTEIN DAM				3.18
13		RIET RIVER (KALKFONTEIN DAM)	RAW WATER FROM THE KALKFONTEIN CANAL SYSTEM	11000	0.36	B	23.32
13		RIET RIVER (KALKFONTEIN DAM)	RESOURCE POOR FARMERS (RAW WATER FROM THE KALKFONTEIN CANAL SYSTEM)	11000	0.36	B	
13		RIET RIVER (KALKFONTEIN DAM)	RIETRIVIER BOERDERY BK (RESOURCE POOR FARMERS) (RAW WATER FROM THE KALKFONTEIN CANAL SYSTEM)		0.36	B	
16		ROODEFONTEIN DAM	SCHEME (NO OTHER DIFFERENTIATORS HAVE BEEN IDENTIFIED)		2.45	B	66.19
12		ROOIKRANTZ DAM	DAM	6100	6.79	B	65.15
13		STERKSPRUIT (JOZANASHOEK DAM)	RAW WATER FROM THE DAM	6100	3.55	B	74.14
15		TARKA RIVER (KOMMANDODRIFT DAM)	SCHEME	13500	1.00	B	
16		TIERKLOOF DAM	SCHEME (NO OTHER DIFFERENTIATORS HAVE BEEN IDENTIFIED)				11.00

WMA (refer map)		Foot Notes	Government Water Scheme Name	Scheme Management Parameter	Charges For Irrigation Purposes			Charges For Domestic and Industrial use
					m <sup>3</sup> Quota Per Ha	Charge - Cent Per Cubic Metre	Billing Fre.	Charge - Cent Per Cubic Metre
12			TOLENI (TOLENI DAM)	RAW WATER FROM THE DAM				53.22
12			TSOJANA DAM	DAM	6100	8.66	B	36.82
15			TYHEFU (NDLAMBE DAM)	DAM				74.14
11			UMGENI RIVER GWS (MIDMAR, ALBERT FALLS AND INANDA DAMS)	SCHEME			B	15.64
12			UMTATA DAM	DAM				55.35
13			WITTESPRUIT (EGMONT DAM)	EGMONT IRRIGATION BOARD	6100	0.20	B	
12			XILINXA DAM	DAM				28.52
12			XILINXA DAM	FROM GCUWA WEIR				41.20
12			XONXA DAM	SCHEME (NO OTHER DIFFERENTIATORS HAVE BEEN IDENTIFIED)	6100	1.61	B	
12			ZANYOKWE (SANDILE DAM)	PIPELINE				72.32
12			ZANYOKWE (SANDILE DAM)	SCHEME (NO OTHER DIFFERENTIATORS HAVE BEEN IDENTIFIED)	6100	3.74	B	

# Foot notes and additional comments

<b>Foot notes</b>	
Serv	In case where a zero cent charge is to be applied in respect of volumes smaller or equal to servitude volume, only the charge to be applied per every one m <sup>3</sup> in excess of the servitude arrangement is reflected.
<b>Additional comments</b>	
1.	Charges for domestic and industrial use: to be applied per every one m <sup>3</sup> .
2.	Charges for irrigation purposes: to be applied per every one m <sup>3</sup> .
3.	Charges for the TCTA: to be applied per every one m <sup>3</sup> .
4.	Any of the following changes made to the charges, incorporated in the relevant brochure, will be updated and published on the DWAF-website. These include: a) Additional charges b) Changes to the charges incorporated in the brochure: - Charges that are no longer to be applied (declared as OBSOLETE); - Changes to charges; - Changes to volume variables.
5.	In general, charges reflect the full amount without consideration of subsidies. Invoices reflect the amounts inclusive of subsidies.



**For more information, contact your nearest office  
of the Department of Water Affairs and Forestry**

**Mpumalanga Regional Office  
Mr Johan van Aswegen  
Tel: (013) 755-1674-7**

**Free State Regional Office  
Mr Tseliso Ntili  
Tel: (051) 430 3134**

**KwaZulu-Natal Regional Office  
Mr JGG Hansmann  
Tel: (031) 336 2700**

**Gauteng Regional Office  
Mr Hennie Smit  
Tel: (012) 392 1301**

**Limpopo Regional Office  
Prof Ola Busari  
Tel: (015) 290 1217**

**North West Regional Office  
Mr Chedwick Lobakeng  
Tel: (018) 384 3270-6**

**Eastern Cape Regional Office  
Mr Zolile Keke /  
Mr Dewald Coetzee  
Tel: (043) 643 4352**

**Northern Cape Regional Office  
Mr LJ Snyders  
Tel: (053) 831 4125**

**Western Cape Regional Office  
Mr Rashid Khan  
Tel: (021) 950 7100**

