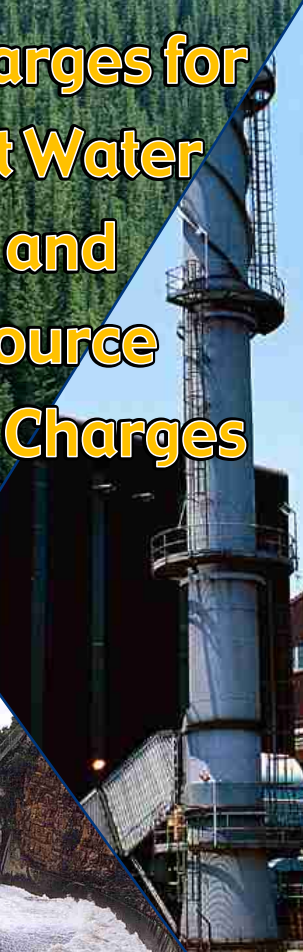
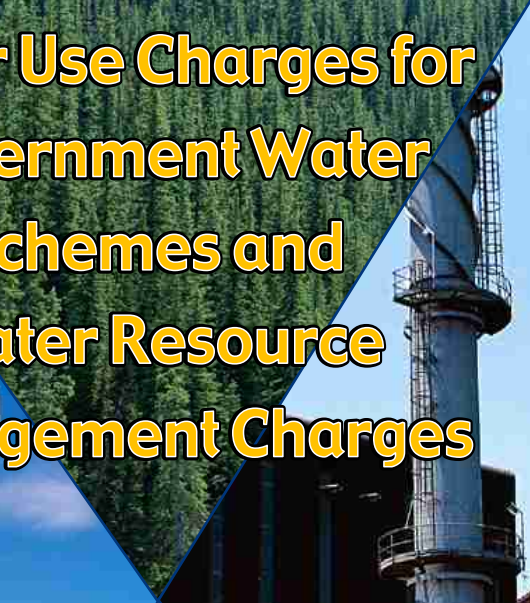


Water Use Charges for Government Water Schemes and Water Resource Management Charges



**2004/2005
Free State Region**



**Your partner in building
a better life for all**

www.dwaf.gov.za

**PROUDLY
SOUTH AFRICAN**





Preface

Included in this brochure are schedules containing Water Resource Management and Water Consumptive charges that will come into effect from 1 April 2004.

Before announcing these charges a series of consultations were held by the top management of the Department of Water Affairs and Forestry (DWAFF), with key national stakeholders including amongst others SALGA, SAAWU, TAU, NAFU, Agri-SA and Forestry SA.

The consultation meetings led to a better understanding of the practical implementation of the Department's Raw Water Pricing Strategy and the drivers necessitating charge increases. The charges set out in these tables have been amended with respect to a number of issues raised at the consultation meetings, but do not represent a consensus position of stakeholders and DWAFF. The charges have been determined by DWAFF in accordance with the mandate of the National Water Act and the Raw Water Pricing Strategy.

In order to improve the process of further consultations, it was agreed that future discussions on water charge increases will be held well in advance of announcement dates. This will enable stakeholders to properly consult with their members and make meaningful recommendations to the Department.

It was further agreed that DWAFF will, during the 2004/5 financial year, initiate a process of reviewing the Raw Water Pricing Strategy. It is intended that the review of this strategy will be completed in time for the 2006/7 charges to be based on the revised strategy. Because of the requirements for public consultation it is not possible to finalise the revision in time to influence the 2005/6 charges which will, therefore, still be calculated under the existing strategy.



Mike Muller
Director-General

DEPARTMENT OF WATER AFFAIRS AND FORESTRY

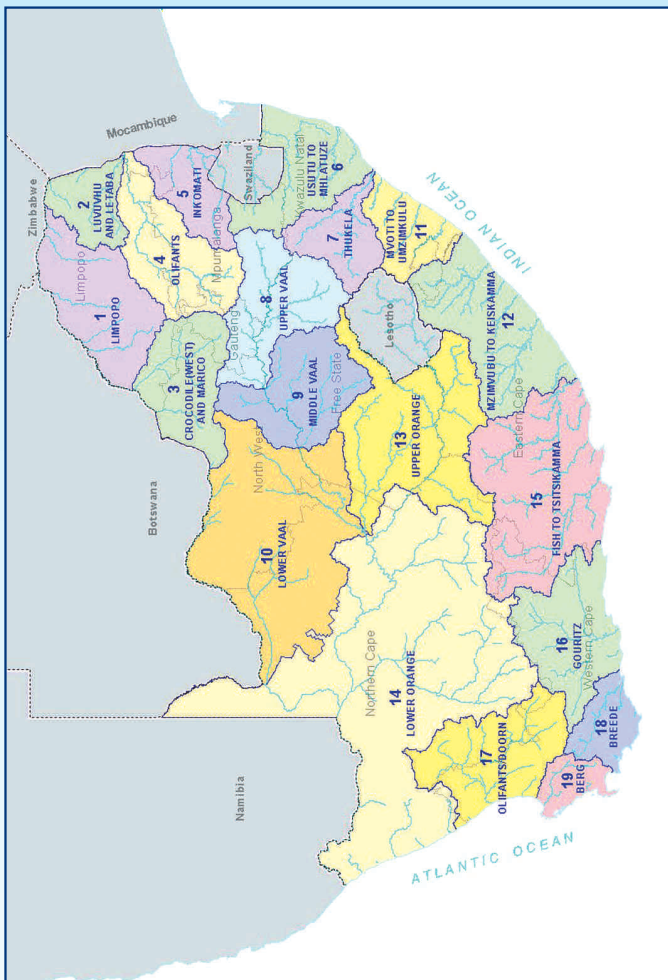
Summary of sectoral Water Resource Management Charges per Water Management Area

WATER MANAGEMENT AREA		SECTORAL UNIT COST IN C/M ³		
No	Water Management Area	Domestic/ Industrial	Agriculture: Irrigation and watering livestock	Forestry
1	LIMPOPO	1.23	0.89	0.83
2	LUVUVHU AND LETABA	1.60	1.07	0.98
3	CROCODILE (W) & MARICO	0.85	0.70	0.68
4	OLIFANTS	0.89	0.75	0.70
5	INKOMATI	0.85	0.63	0.57
6	USUTU TO MHLATHUZE	0.42	0.42	0.41
7	THUKELA	0.34	0.34	0.33
8	UPPER VAAL	1.30	0.79	0.79
9	MIDDLE VAAL	0.98	0.80	N/A
10	LOWER VAAL	0.69	0.56	N/A
11	MVOTI TO UMZIMKULU	0.91	0.87	0.84
12	MZIMVUBU TO KEISKAMMA	0.97	0.67	0.56
13	UPPER ORANGE	0.38	0.38	N/A
14	LOWER ORANGE	0.62	0.47	N/A
15	FISH TO TSITSIKAMMA	1.45	0.61	0.38
16	GOURITZ	2.11	0.72	0.56
17	OLIFANTS / DOORN	1.16	0.70	0.64
18	BREEDE	2.64	0.64	0.41
19	BERG	3.25	0.76	0.61
	Average	1.19	0.67	0.61

ALL CHARGES EXCLUDE VAT

C/M³ (cent per cubic metre)

Map of the Water Management Areas and provincial borders



How to convert cents per m³ to Rand per hectare

The charges listed in the table for irrigation purposes are provided in cents per m³. Should you wish to convert it to Rand per hectare, please follow the instructions below:

Take the total charge in cent per m³ and divide it by 100. Take the answer and multiply it with the m³ quota per hectare to get to the Rand per hectare amount. *For example see next page:*

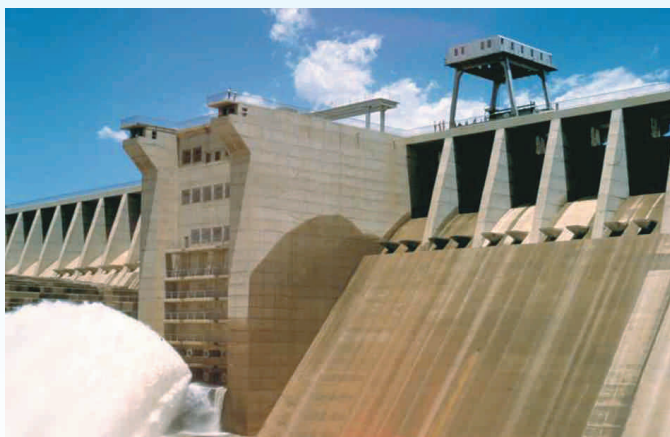
For example:

Total Charge: 3.70 cent per m³ /100 = R 0.037 per m³

Total charge R 0.037 per m³ x 3 000 (m³ quota of water per hectare) = R111 per hectare

Understanding the abbreviations

WMA	Water Management Area A map of the Water Management Areas is printed in this document for easy identification.
m³	Cubic metre
Ha	Hectare
B	Bi-annually
A	Annually
TBA	To be advised
Billing Fre	Billing Frequency



WMA (refer map)	Foot Notes	Government Water Scheme Name	Scheme Management Parameter	Charges For Irrigation Purposes			Charges For Domestic and Industrial use	Charges For The TCTA
				m ³ Quota Per Ha	Charge - Cent Per Cubic Metre	Billing Fre.		
13		CALEDON RIVER (WELBEDACHT DAM, RUSTFONTEIN DAM AND KNELLPOORT DAM)	BLOEM WATER [RAW WATER FROM RIVER AND DAMS]				17.29	
13	SERV	CALEDON RIVER (WELBEDACHT DAM, RUSTFONTEIN DAM AND KNELLPOORT DAM)	BLOEMFONTEIN MUNICIPALITY [RAW WATER FROM MODDER RIVER]				17.29	
13		KGABANAYANE RIVER (GROOTHOEK DAM)	BLOEM WATER				63.13	
13		LEEU RIVER (ARMENIA DAM)	RAW WATER FROM THE CANAL SYSTEM	6100	0.18	B		
13		LEEU RIVER (ARMENIA DAM)	RAW WATER FROM THE DAM AND RIVER	6100	0.18	B	3.38	
13		MODDER RIVER (KRUGERSDRIFT DAM)	RAW WATER FROM THE DAM AND RIVER				4.90	
13		MODDER RIVER (KRUGERSDRIFT DAM)	ZONE 1: WATER ABSTRACTED FROM THE RIVER (KRUGERSDRIFT DAM UP TO RYANSDALE/KALKBANK)	8130	3.56	B		
13		MODDER RIVER (KRUGERSDRIFT DAM)	ZONE 2: WATER ABSTRACTED FROM THE RIVER (RYANSDALE/KALKBANK UP TO SCHOLTZBURG WEIR)	8640	3.56	B		
13	SERV	ORANGE RIVER (GARIEP DAM, VANDERKLOOF DAM AND ORANGE-FISH TUNNEL)	HOPETOWN MUNICIPALITY (RAW WATER ABSTRACTED FROM ANY OF THE DAMS AS WELL AS THE ORANGE RIVER)				4.96	
13		ORANGE RIVER (GARIEP DAM, VANDERKLOOF DAM AND ORANGE-FISH TUNNEL)	MIDDLE ORANGE WATER CONTROL AREA (BETWEEN HOPETOWN AND DOUGLAS/MARKSDRIFT)	11000	1.05	B	4.96	
13		ORANGE RIVER (GARIEP DAM, VANDERKLOOF DAM AND ORANGE-FISH TUNNEL)	RAW WATER PUMPED BY THE DEPARTMENT FROM VANDERKLOOF DAM				38.60	
13		ORANGE RIVER (GARIEP DAM, VANDERKLOOF DAM AND ORANGE-FISH TUNNEL)	VANDERKLOOF GOVERNMENT WATER CONTROL AREA (BETWEEN GARIEP DAM AND HOPETOWN)	11000	1.05	B	4.96	
13		ORANGE RIVER (VANDERKLOOF CANALS)	RAW WATER FROM VANDERKLOOF CANALS	11000	6.27	B		

WMA (refer map)	Foot Notes	Government Water Scheme Name	Scheme Management Parameter	Charges For Irrigation Purposes			Charges For Domestic and Industrial use	Charges For The TCTA
				m ³ Quota Per Ha	Charge - Cent Per Cubic Metre	Billing Fre.		
13		ORANGE-RIET (RIET RIVER SETTLEMENT) AND ORANGE-RIET CANAL	AGANANG: IRRIGATION USE SECTOR FROM VANDERKLOOF MAIN CANAL	11000	1.05	B		Charge - Cent Per Cubic Metre
13		ORANGE-RIET (RIET RIVER SETTLEMENT) AND ORANGE-RIET CANAL	COMMERCIAL FARMERS: IRRIGATION USE SECTOR FROM VANDERKLOOF MAIN CANAL	11000	1.05	B		
13		ORANGE-RIET (RIET RIVER SETTLEMENT) AND ORANGE-RIET CANAL	DRIE EENHEID: IRRIGATION USE SECTOR FROM VANDERKLOOF MAIN CANAL	11000	1.05	B		
13		ORANGE-RIET (RIET RIVER SETTLEMENT) AND ORANGE-RIET CANAL	ITERLENG: IRRIGATION USE SECTOR FROM VANDERKLOOF MAIN CANAL	11000	1.05	B		
13		ORANGE-RIET (RIET RIVER SETTLEMENT) AND ORANGE-RIET CANAL	MAHUA TRUST: IRRIGATION USE SECTOR FROM VANDERKLOOF MAIN CANAL	11000	1.05	B		
13		ORANGE-RIET (RIET RIVER SETTLEMENT) AND ORANGE-RIET CANAL	OPPERMANS: IRRIGATION USE SECTOR FROM VANDERKLOOF MAIN CANAL		1.05	B		
13		ORANGE-RIET (RIET RIVER SETTLEMENT) AND ORANGE-RIET CANAL	ORANGE-RIET CANAL SYSTEM				32.15	
13		ORANGE-RIET (RIET RIVER SETTLEMENT) AND ORANGE-RIET CANAL	PROEFPLAAS: IRRIGATION USE SECTOR FROM VANDERKLOOF MAIN CANAL		1.05	B		
13		ORANGE-RIET (RIET RIVER SETTLEMENT) AND ORANGE-RIET CANAL	RIET RIVER SETTLEMENT CANAL SYSTEM				37.90	
13		ORANGE-RIET (RIET RIVER SETTLEMENT) AND ORANGE-RIET CANAL	ZELPHY: IRRIGATION USE SECTOR FROM VANDERKLOOF MAIN CANAL	11000	1.05	B		
9		RHENOSTER RIVER (KOPPIES DAM)	RAW WATER FROM THE CANAL SYSTEM	6100	17.59	B		
13	SERV	RIET RIVER (KALKFONTEIN DAM)	JACOBSDAL MUNICIPALITY (RAW WATER FROM THE KALKFONTEIN CANAL SYSTEM FOR IRRIGATION)	11000	23.32	B		
13	SERV	RIET RIVER (KALKFONTEIN DAM)	KOFFIEFONTEIN MUNICIPALITY (RAW WATER FROM THE KALKFONTEIN CANAL SYSTEM)				23.32	

WMA (refer map)		Government Water Scheme Name		Scheme Management Parameter		Charges For Irrigation Purposes			Charges For Domestic and Industrial use	Charges For The TCTA
Foot Notes				m ³ Quota Per Ha	Charge - Cent Per Cubic Metre	Billing Fre.	Charge - Cent Per Cubic Metre	Charge - Cent Per Cubic Metre		
13		RIET RIVER (KALKFONTEIN DAM)		RAW WATER FROM KALKFONTEIN DAM			3.18			
13		RIET RIVER (KALKFONTEIN DAM)		RAW WATER FROM THE KALKFONTEIN CANAL SYSTEM	11000	B	23.32			
13		RIET RIVER (KALKFONTEIN DAM)		RESOURCE POOR FARMERS (RAW WATER FROM THE KALKFONTEIN CANAL SYSTEM)	11000	B				
13		RIET RIVER (KALKFONTEIN DAM)		RIETRIVIER BOERDERY BK (RESOURCE POOR FARMERS) (RAW WATER FROM THE KALKFONTEIN CANAL SYSTEM)		B				
9		SAND-VET RIVER (ERFENIS AND ALLEMANS-KRAAL DAM)		FROM ANY OF THE DAMS (DIRECTLY)	7200	B	1.66	7.09		
9		SAND-VET RIVER (ERFENIS AND ALLEMANS-KRAAL DAM)		FROM THE CANAL SYSTEM	7200	B	10.12	21.02		
9		SAND-VET RIVER (ERFENIS AND ALLEMANS-KRAAL DAM)		FROM THE RIVER	7200	B	7.97			
9	SERV	SAND-VET RIVER (ERFENIS AND ALLEMANS-KRAAL DAM)		HOOPSTAD MUNICIPALITY (RAW WATER FROM THE RIVER)				21.02		
9	SERV	SAND-VET RIVER (ERFENIS AND ALLEMANS-KRAAL DAM)		THEUNISSEN MUNICIPALITY (RAW WATER FROM THE CANAL SYSTEM)				21.02		
9		SCHOONSPRUIT (ELANDSKUIL AND RIETSPRUIT DAMS)		SCHOONSPRUIT GOVERNMENT WATER SCHEME	7700	B	7.66	32.00		
13		STERKSPRUIT (JOZANASHOEK DAM)		RAW WATER FROM THE DAM	6100	B	3.55	74.14		
9	SERV	VAAL RIVER (SYSTEM) - FREE STATE REGION		ANGLOGOLD VAAL RIVER				28.30	122.40	
9		VAAL RIVER (SYSTEM) - FREE STATE REGION		USERS IN THE MIDDLE VAAL WMA				28.30	122.40	
13		WITTESPRUIT (EGMONT DAM)		EGMONT IRRIGATION BOARD	6100	B	0.20			
9		WITTESPRUIT (EGMONT DAM)		RAW WATER FROM THE DAM AND RIVER	6100	B	4.20	15.68		

Foot notes and additional comments

Foot notes	
Serv	In case where a zero cent charge is to be applied in respect of volumes smaller or equal to servitude volume, only the charge to be applied per every one m ³ in excess of the servitude arrangement is reflected.
Additional comments	
1.	Charges for domestic and industrial use: to be applied per every one m ³ .
2.	Charges for irrigation purposes: to be applied per every one m ³ .
3.	Charges for the TCTA: to be applied per every one m ³ .
4.	Any of the following changes made to the charges, incorporated in the relevant brochure, will be updated and published on the DWAF-website. These include: a) Additional charges b) Changes to the charges incorporated in the brochure: - Charges that are no longer to be applied (declared as OBSOLETE); - Changes to charges; - Changes to volume variables.
5.	In general, charges reflect the full amount without consideration of subsidies. Invoices reflect the amounts inclusive of subsidies.



**For more information, contact your nearest office
of the Department of Water Affairs and Forestry**

**Mpumalanga Regional Office
Mr Johan van Aswegen
Tel: (013) 755-1674-7**

**Free State Regional Office
Mr Tseliso Ntili
Tel: (051) 430 3134**

**KwaZulu-Natal Regional Office
Mr JGG Hansmann
Tel: (031) 336 2700**

**Gauteng Regional Office
Mr Hennie Smit
Tel: (012) 392 1301**

**Limpopo Regional Office
Prof Ola Busari
Tel: (015) 290 1217**

**North West Regional Office
Mr Chedwick Lobakeng
Tel: (018) 384 3270-6**

**Eastern Cape Regional Office
Mr Zolile Keke /
Mr Dewald Coetzee
Tel: (043) 643 4352**

**Northern Cape Regional Office
Mr LJ Snyders
Tel: (053) 831 4125**

**Western Cape Regional Office
Mr Rashid Khan
Tel: (021) 950 7100**



Department: Water Affairs and Forestry