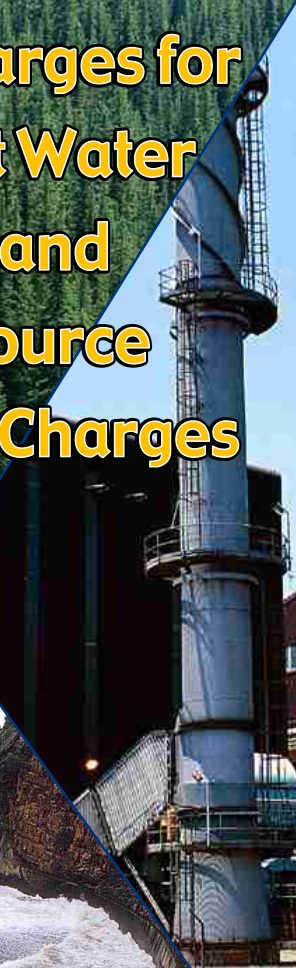
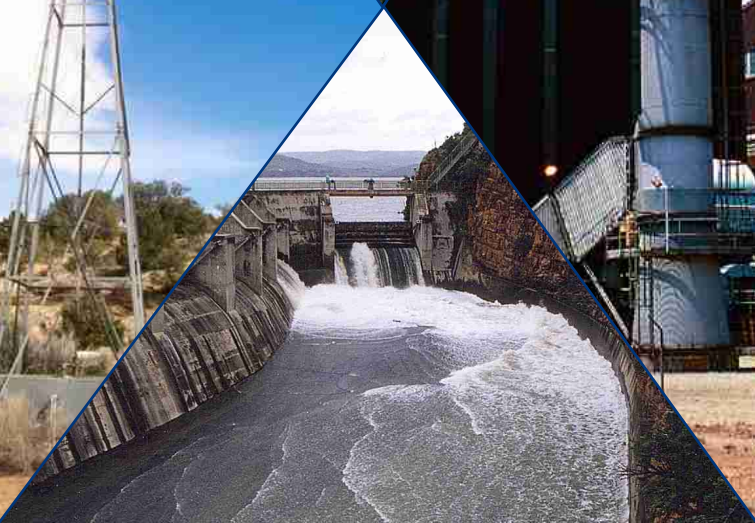


Water Use Charges for Government Water Schemes and Water Resource Management Charges



2004/2005
Limpopo Region



Department: Water Affairs and Forestry

*Your partner in building
a better life for all*

www.dwaf.gov.za

PROUDLY
SOUTH AFRICAN



Preface

Included in this brochure are schedules containing Water Resource Management and Water Consumptive charges that will come into effect from 1 April 2004.

Before announcing these charges a series of consultations were held by the top management of the Department of Water Affairs and Forestry (DWAf), with key national stakeholders including amongst others SALGA, SAAWU, TAU, NAFU, Agri-SA and Forestry SA.

The consultation meetings led to a better understanding of the practical implementation of the Department's Raw Water Pricing Strategy and the drivers necessitating charge increases. The charges set out in these tables have been amended with respect to a number of issues raised at the consultation meetings, but do not represent a consensus position of stakeholders and DWAf. The charges have been determined by DWAf in accordance with the mandate of the National Water Act and the Raw Water Pricing Strategy.

In order to improve the process of further consultations, it was agreed that future discussions on water charge increases will be held well in advance of announcement dates. This will enable stakeholders to properly consult with their members and make meaningful recommendations to the Department.

It was further agreed that DWAf will, during the 2004/5 financial year, initiate a process of reviewing the Raw Water Pricing Strategy. It is intended that the review of this strategy will be completed in time for the 2006/7 charges to be based on the revised strategy. Because of the requirements for public consultation it is not possible to finalise the revision in time to influence the 2005/6 charges which will, therefore, still be calculated under the existing strategy.



Mike Muller
Director-General

DEPARTMENT OF WATER AFFAIRS AND FORESTRY

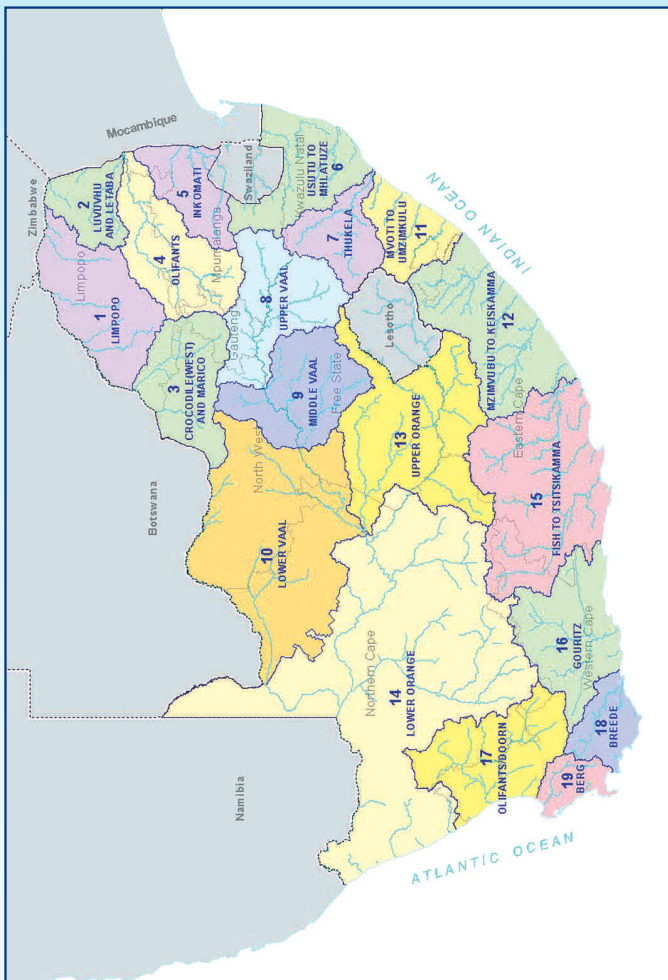
Summary of sectoral Water Resource Management Charges per Water Management Area

| WATER MANAGEMENT AREA | | SECTORAL UNIT COST IN C/M ³ | | |
|-----------------------|------------------------|--|---|-------------|
| No | Water Management Area | Domestic/ Industrial | Agriculture: Irrigation and watering livestock | Forestry |
| 1 | LIMPOPO | 1.23 | 0.89 | 0.83 |
| 2 | LUVUVHU AND LETABA | 1.60 | 1.07 | 0.98 |
| 3 | CROCODILE (W) & MARICO | 0.85 | 0.70 | 0.68 |
| 4 | OLIFANTS | 0.89 | 0.75 | 0.70 |
| 5 | INKOMATI | 0.85 | 0.63 | 0.57 |
| 6 | USUTU TO MHLATHUZE | 0.42 | 0.42 | 0.41 |
| 7 | THUKELA | 0.34 | 0.34 | 0.33 |
| 8 | UPPER VAAL | 1.30 | 0.79 | 0.79 |
| 9 | MIDDLE VAAL | 0.98 | 0.80 | N/A |
| 10 | LOWER VAAL | 0.69 | 0.56 | N/A |
| 11 | MVOTI TO UMZIMKULU | 0.91 | 0.87 | 0.84 |
| 12 | MZIMVUBU TO KEISKAMMA | 0.97 | 0.67 | 0.56 |
| 13 | UPPER ORANGE | 0.38 | 0.38 | N/A |
| 14 | LOWER ORANGE | 0.62 | 0.47 | N/A |
| 15 | FISH TO TSITSIKAMMA | 1.45 | 0.61 | 0.38 |
| 16 | GOURITZ | 2.11 | 0.72 | 0.56 |
| 17 | OLIFANTS / DOORN | 1.16 | 0.70 | 0.64 |
| 18 | BREEDE | 2.64 | 0.64 | 0.41 |
| 19 | BERG | 3.25 | 0.76 | 0.61 |
| | Average | 1.19 | 0.67 | 0.61 |

ALL CHARGES EXCLUDE VAT

C/M³ (cent per cubic metre)

Map of the Water Management Areas and provincial borders



How to convert cents per m³ to Rand per hectare

The charges listed in the table for irrigation purposes are provided in cents per m³. Should you wish to convert it to Rand per hectare, please follow the instructions below:

Take the total charge in cent per m³ and divide it by 100. Take the answer and multiply it with the m³ quota per hectare to get to the Rand per hectare amount. *For example see next page:*

For example:

Total Charge: 3.70 cent per m^3 /100 = R 0.037 per m^3

Total charge R 0.037 per m^3 x 3 000 (m^3 quota of water per hectare) = R111 per hectare

Understanding the abbreviations

| | |
|-------------------------|---|
| WMA | Water Management Area A map of the Water Management Areas is printed in this document for easy identification. |
| m^3 | Cubic metre |
| Ha | Hectare |
| B | Bi-annually |
| A | Annually |
| TBA | To be advised |
| Billing Fre | Billing Frequency |

Foot notes and additional comments

| Foot notes | |
|----------------------------|---|
| Serv | In case where a zero cent charge is to be applied in respect of volumes smaller or equal to servitude volume, only the charge to be applied per every one m^3 in excess of the servitude arrangement is reflected. |
| Additional comments | |
| 1. | Charges for domestic and industrial use: to be applied per every one m^3 . |
| 2. | Charges for irrigation purposes: to be applied per every one m^3 . |
| 3. | Charges for the TCTA: to be applied per every one m^3 . |
| 4. | Any of the following changes made to the charges, incorporated in the relevant brochure, will be updated and published on the DWAF-website. These include: a) Additional charges b) Changes to the charges incorporated in the brochure: - Charges that are no longer to be applied (declared as OBSOLETE); - Changes to charges; - Changes to volume variables. |
| 5. | In general, charges reflect the full amount without consideration of subsidies. Invoices reflect the amounts inclusive of subsidies. |

| WMA (refer map) | Foot Notes | Government Water Scheme Name | Scheme Management Parameter | Charges For Irrigation Purposes | | | Charges For Domestic and Industrial use |
|-----------------|------------|--|--|---------------------------------|-------------------------------|--------------|---|
| | | | | m ³ Quota Per Ha | Charge - Cent Per Cubic Metre | Billing Fre. | |
| 2 | | ALBASINI DAM | CANAL | 8400 | 6.14 | B | |
| 2 | | ALBASINI DAM | FROM THE DAM | | | | 9.72 |
| 2 | | DAMANI DAM | FROM THE DAM | 10000 | 3.04 | B | 39.7 |
| 2 | | GROOT LETABA RIVER (EBENEZER DAM) | FROM EBENEZER DAM TO LEPELLE WATER | | | | 2.98 |
| 2 | | GROOT LETABA RIVER (EBENEZER DAM) | FROM THE EBENEZER DAM AND THE RIVER UP TO TZANEEN DAM | | | | 9.56 |
| 2 | | GROOT LETABA RIVER (EBENEZER DAM) | IRRIGATION DISTRICT ZONE I & PART OF ZONE II | 6620 | 1.7 | B | |
| 2 | | GROOT LETABA RIVER (TZANEEN DAM) | FROM THE DAM AND THE RIVER. IRRIGATION DISTRICT ZONE II | 8920 | 1.61 | B | |
| 2 | | GROOT LETABA RIVER (TZANEEN DAM) | FROM THE DAM AND THE RIVER. IRRIGATION DISTRICT ZONE III | 10900 | 1.61 | B | |
| 2 | | GROOT LETABA RIVER (TZANEEN DAM) | FROM TZANEEN DAM AND THE RIVER DOWNSTREAM OF THE DAM | | | | 10.51 |
| 2 | SERV | GROOT LETABA RIVER (TZANEEN DAM) | FROM TZANEEN DAM TO THE KRUGER NATIONAL PARK | | | | 10.51 |
| 2 | SERV | GROOT LETABA RIVER (TZANEEN DAM) | PORT. 11 (PORT OF PORT 7) AVONSHOEK 536 LT (FREE WATER) PUMP DIRECT FROM THE DAM | | 1.61 | B | |
| 2 | SERV | GROOT LETABA RIVER (TZANEEN DAM) | PORT. 7 & 9 OF AVONSHOEK (FREE WATER) PUMP DIRECT FROM THE DAM | | 1.61 | B | |
| 2 | | GROOT LETABA RIVER (TZANEEN DAM) | REM. EXT. OF PORT. 3 OF MULDEERSPLANT 499 LT PUMP DIRECT FROM THE DAM | | 1.61 | B | |
| 1 | | HOUTRIVIER DAM | FROM THE DAM | | | | 63.13 |
| 2 | | LUVUVHU RIVER (VONDO DAM) | FROM THE VONDO DAM | | 2.78 | B | 20.91 |
| 2 | | MALAMULELE WEIR | LUVUVHU RIVER (NANDONI DAM) WEIRS BELOW NANDONI | | | | 44.29 |
| 1 | | MASHASHANE DAM | FROM THE DAM | | | | 63.13 |
| 2 | | MIDDLE LETABA SYSTEM (MIDDLE LETABA DAM) | FROM THE CANAL SYSTEM | | 5.17 | B | 63.13 |

| WMA (refer map) | Foot Notes | Government Water Scheme Name | Scheme Management Parameter | Charges For Irrigation Purposes | | | Charges For Domestic and Industrial use |
|-----------------------|---------------|--|---|------------------------------------|--|-----------------|---|
| | | | | m ³ Quota Per Ha | Charge - Cent Per Cubic Metre | Billing Fre. | |
| 2 | | MIDDLE LETABA SYSTEM (MIDDLE LETABA DAM) | FROM THE DAM | | | | 63.13 |
| 2 | | MIDDLE LETABA SYSTEM (NSAMI DAM) | FROM THE CANAL SYSTEM | | 5.17 | B | |
| 2 | | MIDDLE LETABA SYSTEM (NSAMI DAM) | FROM THE DAM | | | | 63.13 |
| 2 | | MODJADJI DAM | FROM THE DAM | | | | 63.13 |
| 1 | | MOGALAKWENA RIVER (GLEN ALPINE DAM) | FROM THE DAM | 6200 | 8.09 | B | |
| 1 | SERV | MOGOL RIVER (MOKOLO DAM) | CONSUMER(S) WITH SERVITUDE ARRANGEMENT OF "0" TARIFF ALLOCATION OF 10 400 000 CUBIC METRE FROM THE MOGOL RIVER (MOKOLO DAM) GWS | | 4.22 | B | |
| 1 | | MOGOL RIVER (MOKOLO DAM) | RAW WATER TO ISCOR FROM THE MOGOL RIVER (MOKOLO DAM) GWS | | | | 39.72 |
| 2 | | MUTALI WEIR | FROM THE WEIR | | | | 63.13 |
| 1 | | MUTSHEDZI DAM | FROM THE DAM | | | | 63.13 |
| 1 | | NWANEDI/LUPHEPHE SCHEME | FROM THE DAM VIA RIVER ABOVE CROSS DAM | 8400 | 6.04 | B | |
| 1 | | NWANEDI/LUPHEPHE SCHEME | FROM THE DAM VIA RIVER BELOW CROSS DAM | 8400 | 6.04 | B | |
| 1 | | NWANEDI/LUPHEPHE SCHEME | FROM THE DAM VIA RIVER, WEIR AND PIPELINE | | | | 28.47 |
| 1 | | NZHELELE RIVER (NZHELELE DAM) | FROM THE CANAL SYSTEM | 8400 | 5.39 | B | 18.51 |
| 1 | | NZHELELE RIVER (NZHELELE DAM) | FROM THE DAM AND THE RIVER | 8400 | 2.09 | B | |
| 2 | | POLITSI RIVER (MAGOEBAKLOOF AND VERGELEGEN DAM) | FROM THE DAM TO MIDDLEKOP | 6600 | 2.38 | B | |
| 2 | | POLITSI RIVER (MAGOEBAKLOOF AND VERGELEGEN DAM) | FROM THE DAM VIA THE CANAL | 6600 | 5.13 | B | 16.23 |
| 1 | | RIETFontein 1 DAM | FROM RIETFontein 1 DAM | | | | |
| 1 | | STERK RIVER (DOORNDRAAI DAM) | CANAL | 7200 | 7.97 | B | 63.13 |

| WMIA (refer map) | Foot Notes | Government Water Scheme Name | Scheme Management Parameter | Charges For Irrigation Purposes | | | Charges For Domestic and Industrial use |
|------------------------|---------------|------------------------------|--------------------------------|------------------------------------|--|-----------------|---|
| | | | | m ³ Quota Per Ha | Charge - Cent Per Cubic Metre | Billing Fre. | |
| 1 | | STERK RIVER (DOORNDRAAI DAM) | DAM | | | B | 32 |
| 2 | | THABINA DAM | FROM THE DAM | | | | 63.13 |
| 2 | | THAPANI DAM | FROM THE DAM | | | | 63.13 |
| 2 | | TSHAKHUMA DAM | FROM THE DAM | | | | 63.13 |

For more information, contact your nearest office of the Department of Water Affairs and Forestry

Mpumalanga Regional Office
Mr Johan van Aswegen
Tel: (013) 755-1674-7

Free State Regional Office
Mr Tseliso Ntuli
Tel: (051) 430 3134

KwaZulu-Natal Regional Office
Mr JGG Hansmann
Tel: (031) 336 2700

Gauteng Regional Office
Mr Hennie Smit
Tel: (012) 392 1301

Limpopo Regional Office
Prof Ola Busari
Tel: (015) 290 1217

North West Regional Office
Mr Chedwick Lobakeng
Tel: (018) 384 3270-6

Eastern Cape Regional Office
Mr Zolile Keke /
Mr Dewald Coetzee
Tel: (043) 643 4352

Northern Cape Regional Office
Mr LJ Snyders
Tel: (053) 831 4125

Western Cape Regional Office
Mr Rashid Khan
Tel: (021) 950 7100