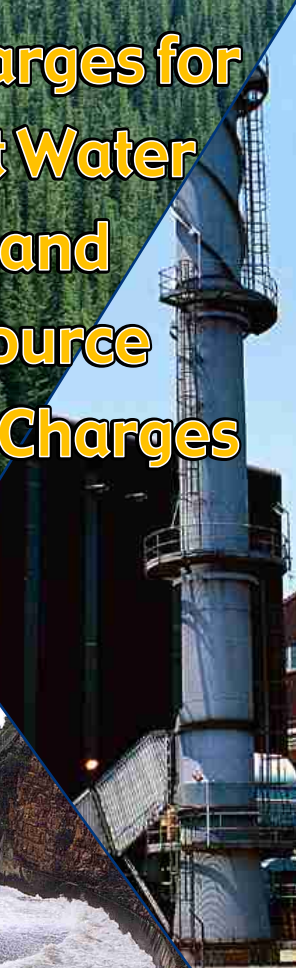
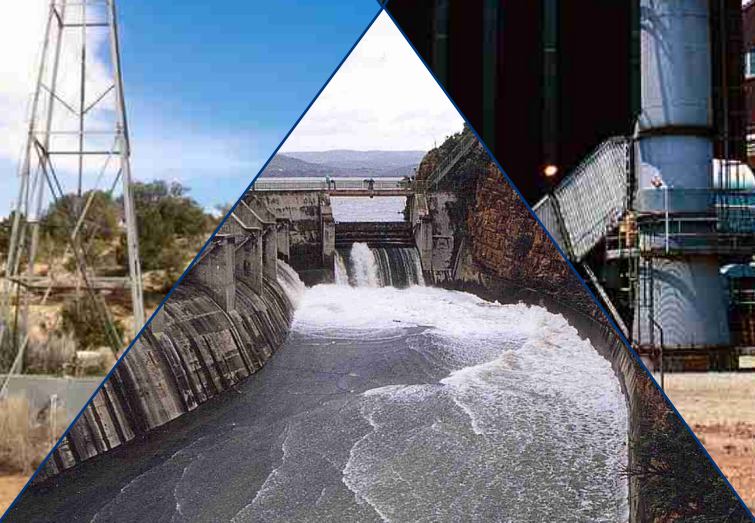


# Water Use Charges for Government Water Schemes and Water Resource Management Charges



**2004/2005**  
**Mpumalanga Region**



**Your partner in building  
a better life for all**

[www.dwaf.gov.za](http://www.dwaf.gov.za)

**PROUDLY  
SOUTH AFRICAN**





# Preface

Included in this brochure are schedules containing Water Resource Management and Water Consumptive charges that will come into effect from 1 April 2004.

Before announcing these charges a series of consultations were held by the top management of the Department of Water Affairs and Forestry (DWAf), with key national stakeholders including amongst others SALGA, SAAWU, TAU, NAFU, Agri-SA and Forestry SA.

The consultation meetings led to a better understanding of the practical implementation of the Department's Raw Water Pricing Strategy and the drivers necessitating charge increases. The charges set out in these tables have been amended with respect to a number of issues raised at the consultation meetings, but do not represent a consensus position of stakeholders and DWAf. The charges have been determined by DWAf in accordance with the mandate of the National Water Act and the Raw Water Pricing Strategy.

In order to improve the process of further consultations, it was agreed that future discussions on water charge increases will be held well in advance of announcement dates. This will enable stakeholders to properly consult with their members and make meaningful recommendations to the Department.

It was further agreed that DWAf will, during the 2004/5 financial year, initiate a process of reviewing the Raw Water Pricing Strategy. It is intended that the review of this strategy will be completed in time for the 2006/7 charges to be based on the revised strategy. Because of the requirements for public consultation it is not possible to finalise the revision in time to influence the 2005/6 charges which will, therefore, still be calculated under the existing strategy.



Mike Muller  
Director-General

DEPARTMENT OF WATER AFFAIRS AND FORESTRY

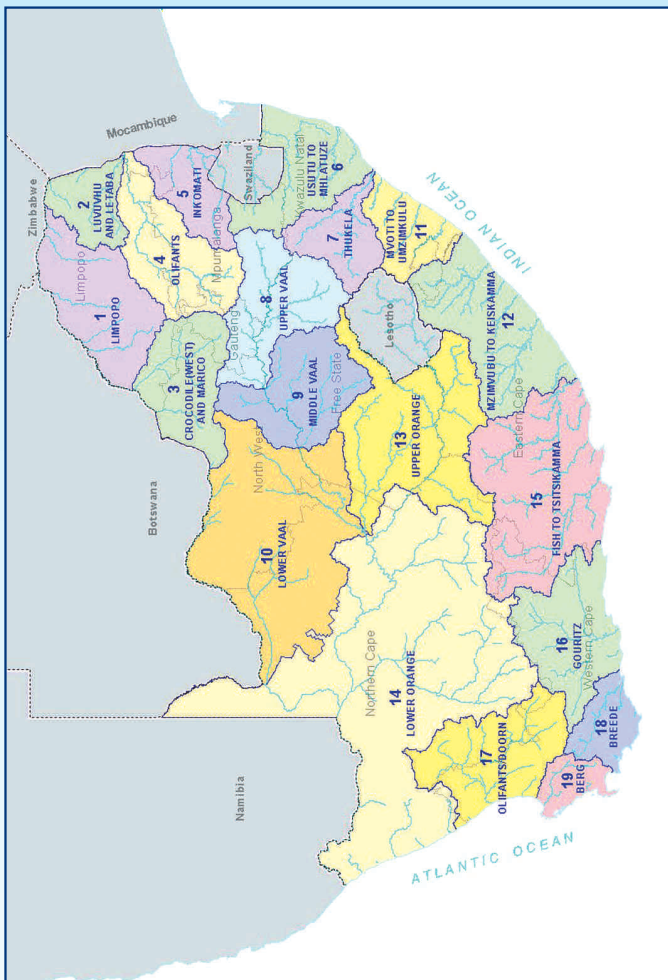
# Summary of sectoral Water Resource Management Charges per Water Management Area

WATER MANAGEMENT AREA		SECTORAL UNIT COST IN C/M <sup>3</sup>		
No	Water Management Area	Domestic/ Industrial	Agriculture: Irrigation and watering livestock	Forestry
1	LIMPOPO	1.23	0.89	0.83
2	LUVUVHU AND LETABA	1.60	1.07	0.98
3	CROCODILE (W) & MARICO	0.85	0.70	0.68
4	OLIFANTS	0.89	0.75	0.70
5	INKOMATI	0.85	0.63	0.57
6	USUTU TO MHLATHUZE	0.42	0.42	0.41
7	THUKELA	0.34	0.34	0.33
8	UPPER VAAL	1.30	0.79	0.79
9	MIDDLE VAAL	0.98	0.80	N/A
10	LOWER VAAL	0.69	0.56	N/A
11	MVOTI TO UMZIMKULU	0.91	0.87	0.84
12	MZIMVUBU TO KEISKAMMA	0.97	0.67	0.56
13	UPPER ORANGE	0.38	0.38	N/A
14	LOWER ORANGE	0.62	0.47	N/A
15	FISH TO TSITSIKAMMA	1.45	0.61	0.38
16	GOURITZ	2.11	0.72	0.56
17	OLIFANTS / DOORN	1.16	0.70	0.64
18	BREEDE	2.64	0.64	0.41
19	BERG	3.25	0.76	0.61
	<b>Average</b>	<b>1.19</b>	<b>0.67</b>	<b>0.61</b>

ALL CHARGES EXCLUDE VAT

C/M<sup>3</sup> (cent per cubic metre)

# Map of the Water Management Areas and provincial borders



## How to convert cents per m<sup>3</sup> to Rand per hectare

The charges listed in the table for irrigation purposes are provided in cents per m<sup>3</sup>. Should you wish to convert it to Rand per hectare, please follow the instructions below:

Take the total charge in cent per m<sup>3</sup> and divide it by 100. Take the answer and multiply it with the m<sup>3</sup> quota per hectare to get to the Rand per hectare amount. *For example see next page:*

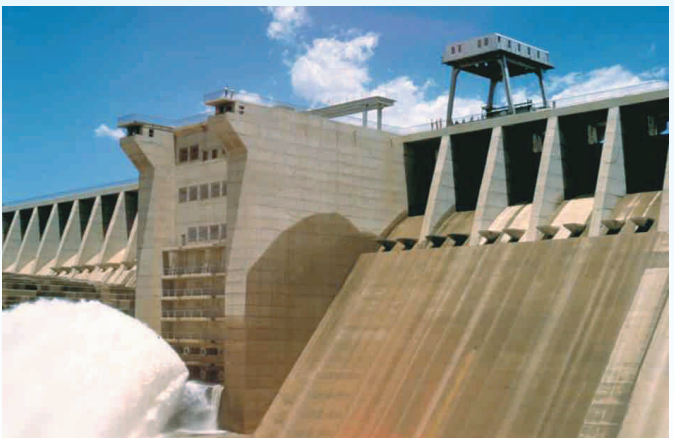
## For example:

Total Charge: 3.70 cent per  $m^3$  /100 = R 0.037 per  $m^3$

Total charge R 0.037 per  $m^3$  x 3 000 ( $m^3$  quota of water per hectare) = R111 per hectare

## Understanding the abbreviations

<b>WMA</b>	Water Management Area A map of the Water Management Areas is printed in this document for easy identification.
<b><math>m^3</math></b>	Cubic metre
<b>Ha</b>	Hectare
<b>B</b>	Bi-annually
<b>A</b>	Annually
<b>TBA</b>	To be advised
<b>Billing Fre</b>	Billing Frequency



WMA (refer map)	Foot Notes	Government Water Scheme Name	Scheme Management Parameter	Charges For Irrigation Purposes			Charges For Domestic and Industrial use	Charges For The TCTA
				m <sup>3</sup> Quota Per Ha	Charge - Cent Per Cubic Metre	Billing Fre.		
2		ALBASINI DAM	CANAL	8400	6.14	B		
2		ALBASINI DAM	FROM THE DAM				9.72	
4		BLYDE RIVER (BLYDERIVERS-POORT DAM)	FROM THE BLYDERIVERSPOORT DAM TO LEPELLE WATER				3.22	
4		BLYDE RIVER (BLYDERIVERS-POORT DAM)	FROM THE BLYDERIVERSPOORT DAM TO OTHER USERS				17.76	
4		BLYDE RIVER (BLYDERIVERS-POORT DAM)	WATER THROUGH NEW PIPELINE AND PUMPED FROM RIVER OUT OF DAM STORAGE		1.18	B	17.76	
4		BRONKHORSTSPRUIT DAM	FROM DAM		6.50	B	9.39	
4	SERV	BRONKHORSTSPRUIT DAM	FROM DAM TO MAGALIES WATER				9.39	
5		CROCODILE RIVER (KWENA DAM)	RAW WATER FROM CROCODILE RIVER (KWENA DAM) DOWNSTREAM OF KROKODILPOORT (INCLUDING KROKODILPOORT MALELANE CANALS)		0.61	B		
5		CROCODILE RIVER (KWENA DAM)	RAW WATER FROM CROCODILE RIVER (KWENA DAM) TO DEPARTMENT OF AGRICULTURE		0.61	B		
5	SERV	CROCODILE RIVER (KWENA DAM)	RAW WATER FROM CROCODILE RIVER (KWENA DAM) TO FORMER KANGWANE GOVERNMENT SERVICES				11.61	
5	SERV	CROCODILE RIVER (KWENA DAM)	RAW WATER FROM CROCODILE RIVER (KWENA DAM) TO LOCAL AREA COMMITTEE OF HECTORSPRUIT				11.61	
5	SERV	CROCODILE RIVER (KWENA DAM)	RAW WATER FROM CROCODILE RIVER (KWENA DAM) TO MUNICIPALITY OF MALELANE				11.61	
5	SERV	CROCODILE RIVER (KWENA DAM)	RAW WATER FROM CROCODILE RIVER (KWENA DAM) TO MUNICIPALITY OF NELSPRUIT				11.61	
5		CROCODILE RIVER (KWENA DAM)	RAW WATER FROM CROCODILE RIVER (KWENA DAM) TO OTHER CONSUMERS				11.61	
5	SERV	CROCODILE RIVER (KWENA DAM)	RAW WATER FROM CROCODILE RIVER (KWENA DAM) TO TVL SUGAR CORPORATION LIMITED				11.61	
5		CROCODILE RIVER (KWENA DAM)	UPSTREAM OF KROKODILPOORT		0.61	B		

WMA (refer map)	Foot Notes	Government Water Scheme Name	Scheme Management Parameter	Charges For Irrigation Purposes			Charges For Domestic and Industrial use	Charges For The TCTA
				m <sup>3</sup> Quota Per Ha	Charge - Cent Per Cubic Metre	Billing Fre.		
2		DAMANI DAM	FROM THE DAM	10000	3.04	B	39.70	
4		ELANDS RIVER (RHENOSTERKOP DAM)	ELANDS RIVER (RHENOSTERKOP DAM)				23.23	
4		ELANDS RIVER (RUST DE WINTER DAM)	FROM DEPT PURIFICATION WORKS FOR SETTLEMENT				90.48	
4		ELANDS RIVER (RUST DE WINTER DAM)	FROM THE CANAL/PIPELINE	7000	7.28	B	40.50	
4		ELANDS RIVER (RUST DE WINTER DAM)	FROM THE DAM				8.48	
4		GROOT DWARS RIVER (DER BROCHEN DAM)	DAM	6700	1.73	B	18.02	
2		GROOT LETABA RIVER (EBENEZER DAM)	FROM EBENEZER DAM TO LEPELLE WATER				2.98	
2		GROOT LETABA RIVER (EBENEZER DAM)	FROM THE EBENEZER DAM AND THE RIVER UP TO TZANEEN DAM				9.56	
2		GROOT LETABA RIVER (EBENEZER DAM)	IRRIGATION DISTRICT ZONE I & PART OF ZONE II	6620	1.70	B		
2		GROOT LETABA RIVER (TZANEEN DAM)	FROM THE DAM AND THE RIVER. IRRIGATION DISTRICT ZONE II	8920	1.61	B		
2		GROOT LETABA RIVER (TZANEEN DAM)	FROM THE DAM AND THE RIVER. IRRIGATION DISTRICT ZONE III	10900	1.61	B		
2		GROOT LETABA RIVER (TZANEEN DAM)	FROM TZANEEN DAM AND THE RIVER DOWNSTREAM OF THE DAM				10.51	
2	SERV	GROOT LETABA RIVER (TZANEEN DAM)	FROM TZANEEN DAM TO THE KRUGER NATIONAL PARK				10.51	
2	SERV	GROOT LETABA RIVER (TZANEEN DAM)	PORT. 11 (PORT OF PORT 7) AVONSHOEK 536 LT (FREE WATER) PUMP DIRECT FROM THE DAM		1.61	B		
2	SERV	GROOT LETABA RIVER (TZANEEN DAM)	PORT. 7 & 9 OF AVONSHOEK (FREE WATER) PUMP DIRECT FROM THE DAM		1.61	B		
2		GROOT LETABA RIVER (TZANEEN DAM)	REM. EXT. OF PORT. 3 OF MULDERSPANT 499 LT. PUMP DIRECT FROM THE DAM		1.61	B		
4		KLASERIE RIVER (KLASERIE DAM)	FROM THE DAM AND THE RIVER	9900	1.30	B		
5		KOMATI RIVER (DRIEKOPPIES & MAGUGA DAMS)	FROM THE DAM: COMMERCIAL USERS	0	2.18	B		
5		KOMATI RIVER (DRIEKOPPIES & MAGUGA DAMS)	FROM THE DAM: RESOURCE POOR FARMERS	0	2.18	B		



WMA (refer map)	Foot Notes	Government Water Scheme Name	Scheme Management Parameter	Charges For Irrigation Purposes			Charges For Domestic and Industrial use	Charges For The TCTA
				m <sup>3</sup> Quota Per Ha	Charge - Cent Per Cubic Metre	Billing Fre.		
5		KOMATI RIVER (VYGEBOOM AND NOOITGEDACHT DAMS)	DUVHA TO HENDRINA PIPELINE				99.81	
5		KOMATI RIVER (VYGEBOOM AND NOOITGEDACHT DAMS)	FROM GLADDESPRUIT CANAL	0	3.30	B		
5		KOMATI RIVER (VYGEBOOM AND NOOITGEDACHT DAMS)	FROM THE DAM	7810	0.67	B		
5		KOMATI RIVER (VYGEBOOM AND NOOITGEDACHT DAMS)	UPPER KOMATI (I.E. ESKOM)				9.09	
2		LUVUVHU RIVER (VONDO DAM)	FROM THE VONDO DAM		2.78	B	20.91	
2		MALAMULELE WEIR	LUVUVHU RIVER (NANDONI DAM) WEIRS BELOW NANDONI				44.29	
4		MAPOCHSGRONDEN (TONTELDOOS AND VLUGKRAAL DAMS)	CANAL	5000	6.36	B	51.15	
2		MIDDLE LETABA SYSTEM (MIDDLE LETABA DAM)	FROM THE CANAL SYSTEM		5.17	B	63.13	
2		MIDDLE LETABA SYSTEM (MIDDLE LETABA DAM)	FROM THE DAM				63.13	
2		MIDDLE LETABA SYSTEM (NSAMI DAM)	FROM THE CANAL SYSTEM		5.17	B		
2		MIDDLE LETABA SYSTEM (NSAMI DAM)	FROM THE DAM				63.13	
2		MODJADJI DAM	FROM THE DAM				63.13	
2		MUTALI WEIR	FROM THE WEIR				63.13	
4		OHRIGSTAD RIVER (OHRIGSTAD DAM)	FROM THE DAM AND THE RIVER	7000	3.45	B		
4		OLIFANTS RIVER (FLAG BOSHELLO DAM)	DAM		2.58	B	25.45	
4		OLIFANTS RIVER (LOSKOP DAM)	RAW WATER FROM DAM	7700	0.94	B	8.16	
4	SERV	OLIFANTS RIVER (LOSKOP DAM)	RAW WATER FROM DAM TO FORMER LEBOWA FARMS	7700	0.94	B		
4		OLIFANTS RIVER (LOSKOP DAM)	RAW WATER FROM DAM TO HEREFORD IRRIGATION BOARD	7700	0.94	B		

WMA (refer map)	Foot Notes	Government Water Scheme Name	Scheme Management Parameter	Charges For Irrigation Purposes		Charges For Domestic and Industrial use	Charges For The TCTA
				m <sup>3</sup> Quota Per Ha	Charge - Cent Per Cubic Metre		
4	SERV	OLIFANTS RIVER (LOSKOP DAM)	RAW WATER FROM DAM TO OLIFANTS RIVER I/BOARD	7700	0.94	B	Charge - Cent Per Cubic Metre
4	SERV	OLIFANTS RIVER (LOSKOP DAM)	RAW WATER FROM DAM TO PREVIOUS SAOT FARMS	7700	0.94	B	
4	SERV	OLIFANTS RIVER (LOSKOP DAM)	RAW WATER TO MIDDELBURG MUNICIPALITY CONSIDERED AS FROM LOSKOP FROM THE DAM TO MIDDLEKOP			8.16	
2		POLITSI RIVER (MAGOEBASKLOOF AND VERGELEGEN DAM)	FROM THE DAM TO MIDDLEKOP	6600	2.38	B	
2		POLITSI RIVER (MAGOEBASKLOOF AND VERGELEGEN DAM)	FROM THE DAM VIA THE CANAL	6600	5.13	B	16.23
5		SAND RIVER (WITKLIP DAM)	FROM THE DAM		6.46	B	16.89
5	SERV	SAND RIVER (WITKLIP DAM)	FROM THE DAM: AVELON FARMS		6.46	B	
5	SERV	SAND RIVER (WITKLIP DAM)	FROM THE DAM: E. J. KAY		6.46	B	
2		THABINA DAM	FROM THE DAM			63.13	
2		THAPANI DAM	FROM THE DAM			63.13	
2		TSHAKHUMA DAM	FROM THE DAM			63.13	
4	SERV	USUTU-VAAL RIVER GWS (PHASE 1) (GROOTDRAAI DAM - [WMA OLIFANTS])	DOUGLAS COLLIERY (ALBION) (OLIFANTS WMA)			160.27	122.40
4	SERV	USUTU-VAAL RIVER GWS (PHASE 1) (GROOTDRAAI DAM - [WMA OLIFANTS])	DOUGLAS COLLIERY (ALBION) (OLIFANTS WMA)			160.27	122.40
4	SERV	USUTU-VAAL RIVER GWS (PHASE 1) (GROOTDRAAI DAM - [WMA OLIFANTS])	DOUGLAS COLLIERY (VAN DYKSDRIFT) (OLIFANTS WMA)			160.27	122.40
4	SERV	USUTU-VAAL RIVER GWS (PHASE 1) (GROOTDRAAI DAM - [WMA OLIFANTS])	DOUGLAS COLLIERY (WOLWEKRANS) (OLIFANTS WMA)			160.27	122.40
4	SERV	USUTU-VAAL RIVER GWS (PHASE 1) (GROOTDRAAI DAM - [WMA OLIFANTS])	KLEINKOPJE MINE (OLIFANTS WMA)			160.27	122.40
4		USUTU-VAAL RIVER GWS (PHASE 1) (GROOTDRAAI DAM - [WMA OLIFANTS])	TRICHARFDSFONTEIN TO WITBANK DAM			160.27	122.40
4		USUTU-VAAL RIVER GWS (PHASE 1) (GROOTDRAAI DAM - [WMA OLIFANTS])	SCHEME	7500	3.99	B	

# Foot notes and additional comments

<b>FOOT NOTES</b>	
Serv	In case where a zero cent charge is to be applied in respect of volumes smaller or equal to servitude volume, only the charge to be applied per every one m <sup>3</sup> in excess of the servitude arrangement is reflected.
<b>Additional comments</b>	
1.	Charges for domestic and industrial use: to be applied per every one m <sup>3</sup> .
2.	Charges for irrigation purposes: to be applied per every one m <sup>3</sup> .
3.	Charges for the TCTA: to be applied per every one m <sup>3</sup> .
4.	Any of the following changes made to the charges, incorporated in the relevant brochure, will be updated and published on the DWAF-website. These include: <ul style="list-style-type: none"><li>a) Additional charges</li><li>b) Changes to the charges incorporated in the brochure:<ul style="list-style-type: none"><li>- Charges that are no longer to be applied (declared as OBSOLETE);</li><li>- Changes to charges;</li><li>- Changes to volume variables.</li></ul></li></ul>
5.	In general, charges reflect the full amount without consideration of subsidies. Invoices reflect the amounts inclusive of subsidies.



**For more information, contact your nearest office  
of the Department of Water Affairs and Forestry**

**Mpumalanga Regional Office  
Mr Johan van Aswegen  
Tel: (013) 755-1674-7**

**Free State Regional Office  
Mr Tseliso Ntili  
Tel: (051) 430 3134**

**KwaZulu-Natal Regional Office  
Mr JGG Hansmann  
Tel: (031) 336 2700**

**Gauteng Regional Office  
Mr Hennie Smit  
Tel: (012) 392 1301**

**Limpopo Regional Office  
Prof Ola Busari  
Tel: (015) 290 1217**

**North West Regional Office  
Mr Chedwick Lobakeng  
Tel: (018) 384 3270-6**

**Eastern Cape Regional Office  
Mr Zolile Keke /  
Mr Dewald Coetzee  
Tel: (043) 643 4352**

**Northern Cape Regional Office  
Mr LJ Snyders  
Tel: (053) 831 4125**

**Western Cape Regional Office  
Mr Rashid Khan  
Tel: (021) 950 7100**

