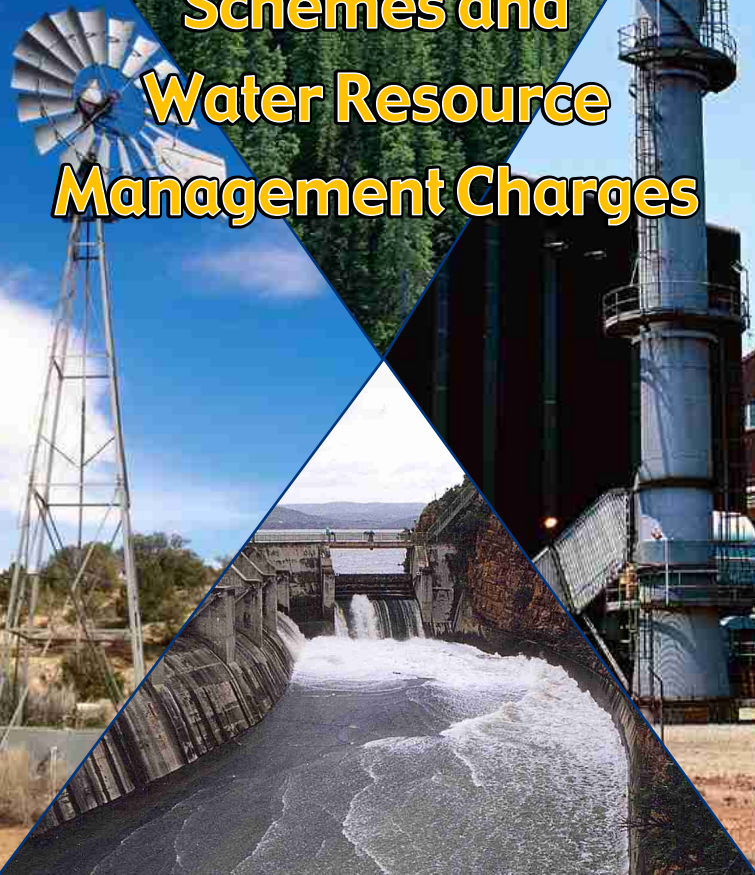


Water Use Charges for Government Water Schemes and Water Resource Management Charges



2004/2005
Northern Cape Region



**Your partner in building
a better life for all**

www.dwaf.gov.za

**PROUDLY
SOUTH AFRICAN**





Preface

Included in this brochure are schedules containing Water Resource Management and Water Consumptive charges that will come into effect from 1 April 2004.

Before announcing these charges a series of consultations were held by the top management of the Department of Water Affairs and Forestry (DWAf), with key national stakeholders including amongst others SALGA, SAAWU, TAU, NAFU, Agri-SA and Forestry SA.

The consultation meetings led to a better understanding of the practical implementation of the Department's Raw Water Pricing Strategy and the drivers necessitating charge increases. The charges set out in these tables have been amended with respect to a number of issues raised at the consultation meetings, but do not represent a consensus position of stakeholders and DWAf. The charges have been determined by DWAf in accordance with the mandate of the National Water Act and the Raw Water Pricing Strategy.

In order to improve the process of further consultations, it was agreed that future discussions on water charge increases will be held well in advance of announcement dates. This will enable stakeholders to properly consult with their members and make meaningful recommendations to the Department.

It was further agreed that DWAf will, during the 2004/5 financial year, initiate a process of reviewing the Raw Water Pricing Strategy. It is intended that the review of this strategy will be completed in time for the 2006/7 charges to be based on the revised strategy. Because of the requirements for public consultation it is not possible to finalise the revision in time to influence the 2005/6 charges which will, therefore, still be calculated under the existing strategy.



Mike Muller
Director-General

DEPARTMENT OF WATER AFFAIRS AND FORESTRY

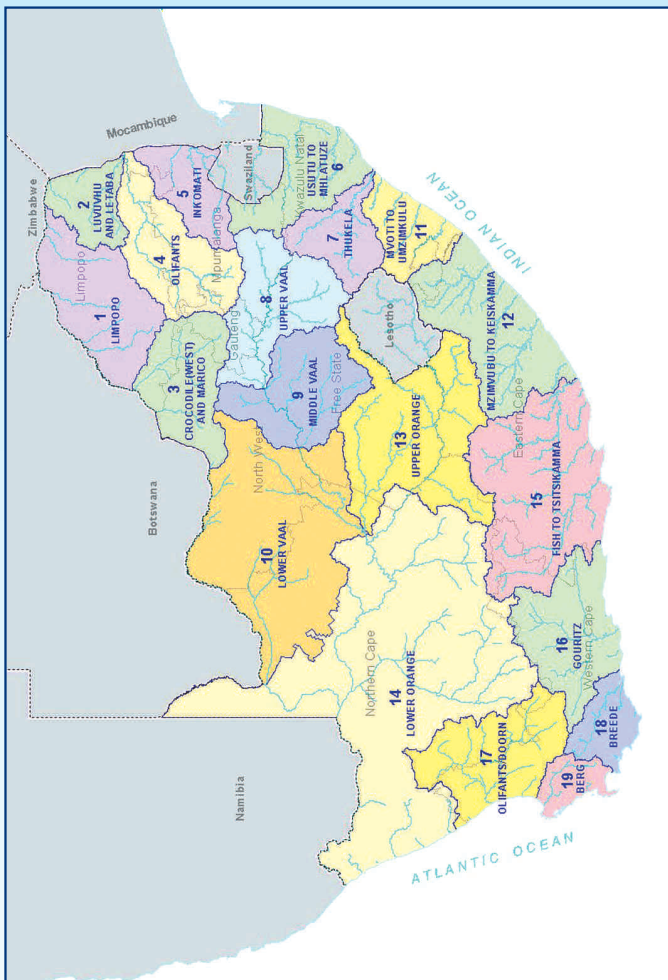
Summary of sectoral Water Resource Management Charges per Water Management Area

WATER MANAGEMENT AREA		SECTORAL UNIT COST IN C/M ³		
No	Water Management Area	Domestic/ Industrial	Agriculture: Irrigation and watering livestock	Forestry
1	LIMPOPO	1.23	0.89	0.83
2	LUVUVHU AND LETABA	1.60	1.07	0.98
3	CROCODILE (W) & MARICO	0.85	0.70	0.68
4	OLIFANTS	0.89	0.75	0.70
5	INKOMATI	0.85	0.63	0.57
6	USUTU TO MHLATHUZE	0.42	0.42	0.41
7	THUKELA	0.34	0.34	0.33
8	UPPER VAAL	1.30	0.79	0.79
9	MIDDLE VAAL	0.98	0.80	N/A
10	LOWER VAAL	0.69	0.56	N/A
11	MVOTI TO UMZIMKULU	0.91	0.87	0.84
12	MZIMVUBU TO KEISKAMMA	0.97	0.67	0.56
13	UPPER ORANGE	0.38	0.38	N/A
14	LOWER ORANGE	0.62	0.47	N/A
15	FISH TO TSITSIKAMMA	1.45	0.61	0.38
16	GOURITZ	2.11	0.72	0.56
17	OLIFANTS / DOORN	1.16	0.70	0.64
18	BREEDE	2.64	0.64	0.41
19	BERG	3.25	0.76	0.61
	Average	1.19	0.67	0.61

ALL CHARGES EXCLUDE VAT

C/M³ (cent per cubic metre)

Map of the Water Management Areas and provincial borders



How to convert cents per m³ to Rand per hectare

The charges listed in the table for irrigation purposes are provided in cents per m³. Should you wish to convert it to Rand per hectare, please follow the instructions below:

Take the total charge in cent per m³ and divide it by 100. Take the answer and multiply it with the m³ quota per hectare to get to the Rand per hectare amount. *For example see next page:*

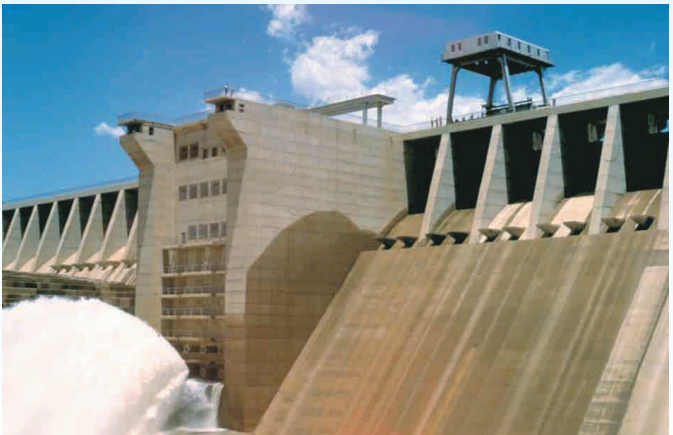
For example:

Total Charge: 3.70 cent per m^3 /100 = R 0.037 per m^3

Total charge R 0.037 per m^3 x 3 000 (m^3 quota of water per hectare) = R111 per hectare

Understanding the abbreviations

WMA	Water Management Area A map of the Water Management Areas is printed in this document for easy identification.
m^3	Cubic metre
Ha	Hectare
B	Bi-annually
A	Annually
TBA	To be advised
Billing Fre	Billing Frequency



WMA (refer map)	Foot Notes	Government Water Scheme Name	Scheme Management Parameter	Charges For Irrigation Purposes			Charges For Domestic and Industrial use	Charges For The TCTA
				m ³ Quota Per Ha	Charge - Cent Per Cubic Metre	Billing Fre.		
10		HARTS RIVER (SPITSKOP DAM)	FROM THE DAM	7700	1.00	B		
10		HARTS RIVER (SPITSKOP DAM)	FROM THE RIVER	7700	1.00	B	12.02	
14		LOWER ORANGE/NAMAQUALAND	RESOURCE POOR FARMERS - SECTION OF LOWER ORANGE BETWEEN BOEGOEBERG AND THE SEA [Commence 2001/2]		1.05	B		
14		LOWER ORANGE/NAMAQUALAND	RESOURCE POOR FARMERS - SECTION OF LOWER ORANGE BETWEEN BOEGOEBERG AND THE SEA [Commence 2002/3]		1.05	B		
14		LOWER ORANGE/NAMAQUALAND	RESOURCE POOR FARMERS - SECTION OF LOWER ORANGE BETWEEN BOEGOEBERG AND THE SEA [Commence 2003/4]		1.05	B		
14		LOWER ORANGE/NAMAQUALAND	SECTION OF LOWER ORANGE BETWEEN BOEGOEBERG AND THE SEA		1.05	B	4.96	
14		MIDDLE ORANGE	LOWER ORANGE BETWEEN DOUGLAS & BOEGOEBERG		1.05	B	4.96	
14		MIDDLE ORANGE	ORANGE VAAL WUA (DOUGLAS CANALS)		1.05	B		
14	SERV	MIDDLE ORANGE	PRIESKA MUNICIPALITY (RAW WATER ABSTRACTED FROM ANY OF THE DAMS AS WELL AS THE ORANGE RIVER)				4.96	
14		MIDDLE ORANGE	RESOURCE POOR FARMERS - (LOWER ORANGE BETWEEN DOUGLAS & BOEGOEBERG) [Commence 2002/3]		1.05	B		
14		MIDDLE ORANGE	RESOURCE POOR FARMERS - (LOWER ORANGE BETWEEN DOUGLAS & BOEGOEBERG) [Commence 2003/4]		1.05	B		
14		ORANGE RIVER (BOEGOEBERG DAM)	FROM THE CANAL SYSTEM	15000	1.05	B	4.96	
14		ORANGE RIVER (BOEGOEBERG DAM)	FROM THE RIVER	15000	1.05	B	4.96	
14		ORANGE RIVER (BOEGOEBERG DAM)	RESOURCE POOR FARMERS - (BOEGOEBERG DAM) [Commence 2001/2]		1.05	B		
14		ORANGE RIVER (BOEGOEBERG DAM)	RESOURCE POOR FARMERS - (BOEGOEBERG DAM) [Commence 2003/4]		1.05	B		

WMA (refer map)	Foot Notes	Government Water Scheme Name	Scheme Management Parameter	Charges For Irrigation Purposes			Charges For Domestic and Industrial use	Charges For The TCTA
				m ³ Quota Per Ha	Charge - Cent Per Cubic Metre	Billing Fre.		
14		ORANGE RIVER (BOEGOEBERG DAM)	RESOURCE POOR FARMERS - (BOEGOEBERG DAM)		1.05	B		
14		ORANGE RIVER (KAKAMAS)	CANAL	15000	1.05	B		
14		ORANGE RIVER (KAKAMAS)	FROM THE RIVER	15000	1.05	B	4.96	
14		ORANGE RIVER (KAKAMAS)	RESOURCE POOR FARMERS - (KAKAMAS) [Commence 2001/2]		1.05	B		
14		ORANGE RIVER (KAKAMAS)	RESOURCE POOR FARMERS - (KAKAMAS) [Commence 2002/3]		1.05	B		
14		ORANGE RIVER (KAKAMAS)	RESOURCE POOR FARMERS - (KAKAMAS) [Commence 2003/4]		1.05	B		
10	SERV	VAAL RIVER (SYSTEM) - LOWER VAAL WEIR TO SCHMITSDRIFT	BARKLEY WEST MUNICIPALITY				28.30	122.40
10		VAAL RIVER (SYSTEM) - LOWER VAAL WEIR TO SCHMITSDRIFT	RIVER	9140	0.56	B	28.30	122.40
10	SERV	VAAL RIVER (SYSTEM) - LOWER VAAL WEIR TO SCHMITSDRIFT	SOL PLAATJIE MUN-KIMBERLEY				28.30	122.40
10	SERV	VAAL RIVER (SYSTEM) - LOWER VAAL WEIR TO SCHMITSDRIFT	WARRENTON MUNICIPALITY				28.30	122.40
10	SERV	VAAL RIVER (SYSTEM) - MIDDLE VAAL BLOEMHOF TO WEIR	BLOEMHOF MUNICIPALITY				28.30	122.40
10	SERV	VAAL RIVER (SYSTEM) - MIDDLE VAAL BLOEMHOF TO WEIR	CHRISTIANA MUNICIPALITY				28.30	122.40
10		VAAL RIVER (SYSTEM) - MIDDLE VAAL BLOEMHOF TO WEIR	RIVER		0.56	B	28.30	122.40
10		VAAL RIVER (VAALHARTS)	KLIP DAM - BARKLY CANALS AND VAALHARTS SMALLHOLDINGS		0.62	A/B	28.30	122.40
10		VAAL RIVER (VAALHARTS)	RESOURCE POOR FARMERS - GANSPAN		0.56	B		
10		VAAL RIVER (VAALHARTS)	RESOURCE POOR FARMERS - GANSPAN [Commence 2001/2]		0.56	B		

WMA (refer map)	Foot Notes	Government Water Scheme Name	Scheme Management Parameter	Charges For Irrigation Purposes			Charges For Domestic and Industrial use	Charges For The TCTA
				m ³ Quota Per Ha	Charge - Cent Per Cubic Metre	Billing Fre.		
10		VAAL RIVER (VAALHARTS)	RESOURCE POOR FARMERS - GANSPAN [Commence 2002/3]		0.56	B		
10		VAAL RIVER (VAALHARTS)	RESOURCE POOR FARMERS - GANSPAN [Commence 2003/4]		0.56	B		
10		VAAL RIVER (VAALHARTS)	RESOURCE POOR FARMERS - TAUNG CANAL SYSTEM		0.56	B		
10		VAAL RIVER (VAALHARTS)	RESOURCE POOR FARMERS - TAUNG CANAL SYSTEM [Commence 2001/2]		0.56	B		
10		VAAL RIVER (VAALHARTS)	RESOURCE POOR FARMERS - TAUNG CANAL SYSTEM [Commence 2002/3]		0.56	B		
10		VAAL RIVER (VAALHARTS)	RESOURCE POOR FARMERS - TAUNG CANAL SYSTEM [Commence 2003/4]		0.56	B		
10		VAAL RIVER (VAALHARTS)	VAALHARTS MAIN, NORTH AND WEST CANALS		0.62	A/B	28.30	122.40
10		VAAL-GAMAGARA REGIONAL WATER SUPPLY	CLIFTON TO ROSCOE [PURIFIED WATER FROM VAAL RIVER]				273.07	122.40
10		VAAL-GAMAGARA REGIONAL WATER SUPPLY	FROM SISHEN GROUNDWATER [KALAHARI EAST]		50.13	B		
10		VAAL-GAMAGARA REGIONAL WATER SUPPLY	KNEUKEL TO CLIFTON [PURIFIED WATER FROM VAAL RIVER]				185.16	122.40
10		VAAL-GAMAGARA REGIONAL WATER SUPPLY	PURIFICATION WORKS TO KNEUKEL INCLUDING DELPORTSHOOP [PURIFIED WATER FROM VAAL RIVER]				132.86	122.40
10		VAAL-GAMAGARA REGIONAL WATER SUPPLY	ROSCOE TO BLACKROCK [PURIFIED WATER FROM VAAL RIVER]				314.17	122.40
10		VAAL-GAMAGARA REGIONAL WATER SUPPLY	ROSCOE TO OLIFANTSHOEK [PURIFIED WATER FROM VAAL RIVER]				264.05	122.40

Foot notes and additional comments

Foot notes	
Serv	In case where a zero cent charge is to be applied in respect of volumes smaller or equal to servitude volume, only the charge to be applied per every one m ³ in excess of the servitude arrangement is reflected.
Additional comments	
1.	Charges for domestic and industrial use: to be applied per every one m ³ .
2.	Charges for irrigation purposes: to be applied per every one m ³ .
3.	Charges for the TCTA: to be applied per every one m ³ .
4.	Any of the following changes made to the charges, incorporated in the relevant brochure, will be updated and published on the DWAF-website. These include: a) Additional charges b) Changes to the charges incorporated in the brochure: - Charges that are no longer to be applied (declared as OBSOLETE); - Changes to charges; - Changes to volume variables.
5.	In general, charges reflect the full amount without consideration of subsidies. Invoices reflect the amounts inclusive of subsidies.



**For more information, contact your nearest office
of the Department of Water Affairs and Forestry**

**Mpumalanga Regional Office
Mr Johan van Aswegen
Tel: (013) 755-1674-7**

**Free State Regional Office
Mr Tseliso Ntili
Tel: (051) 430 3134**

**KwaZulu-Natal Regional Office
Mr JGG Hansmann
Tel: (031) 336 2700**

**Gauteng Regional Office
Mr Hennie Smit
Tel: (012) 392 1301**

**Limpopo Regional Office
Prof Ola Busari
Tel: (015) 290 1217**

**North West Regional Office
Mr Chedwick Lobakeng
Tel: (018) 384 3270-6**

**Eastern Cape Regional Office
Mr Zolile Keke /
Mr Dewald Coetzee
Tel: (043) 643 4352**

**Northern Cape Regional Office
Mr LJ Snyders
Tel: (053) 831 4125**

**Western Cape Regional Office
Mr Rashid Khan
Tel: (021) 950 7100**

