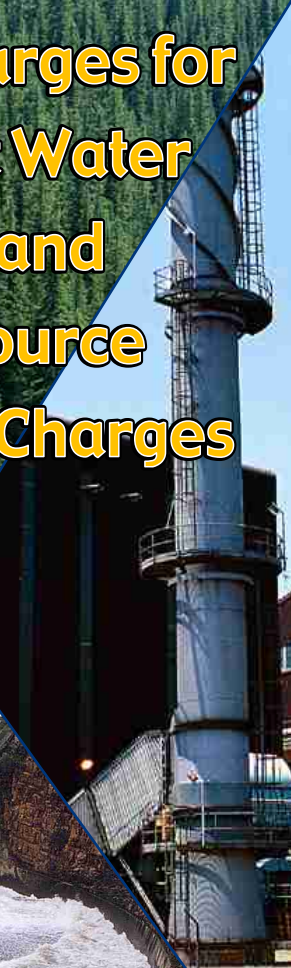
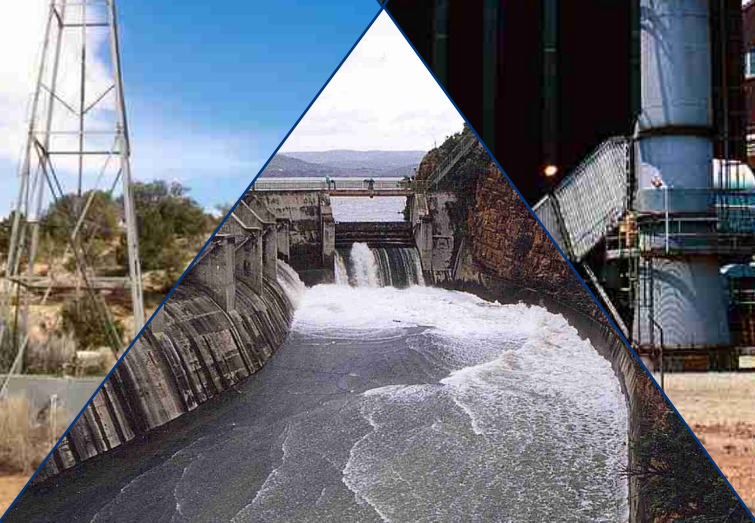


Water Use Charges for Government Water Schemes and Water Resource Management Charges



2004/2005
North West Region



**Your partner in building
a better life for all**

www.dwaf.gov.za

**PROUDLY
SOUTH AFRICAN**





PREFACE

Included in this brochure are schedules containing Water Resource Management and Water Consumptive charges that will come into effect from 1 April 2004.

Before announcing these charges a series of consultations were held by the top management of the Department of Water Affairs and Forestry (DWAf), with key national stakeholders including amongst others SALGA, SAAWU, TAU, NAFU, Agri-SA and Forestry SA.

The consultation meetings led to a better understanding of the practical implementation of the Department's Raw Water Pricing Strategy and the drivers necessitating charge increases. The charges set out in these tables have been amended with respect to a number of issues raised at the consultation meetings, but do not represent a consensus position of stakeholders and DWAf. The charges have been determined by DWAf in accordance with the mandate of the National Water Act and the Raw Water Pricing Strategy.

In order to improve the process of further consultations, it was agreed that future discussions on water charge increases will be held well in advance of announcement dates. This will enable stakeholders to properly consult with their members and make meaningful recommendations to the Department.

It was further agreed that DWAf will, during the 2004/5 financial year, initiate a process of reviewing the Raw Water Pricing Strategy. It is intended that the review of this strategy will be completed in time for the 2006/7 charges to be based on the revised strategy. Because of the requirements for public consultation it is not possible to finalise the revision in time to influence the 2005/6 charges which will, therefore, still be calculated under the existing strategy.



Mike Muller
Director-General

DEPARTMENT OF WATER AFFAIRS AND FORESTRY

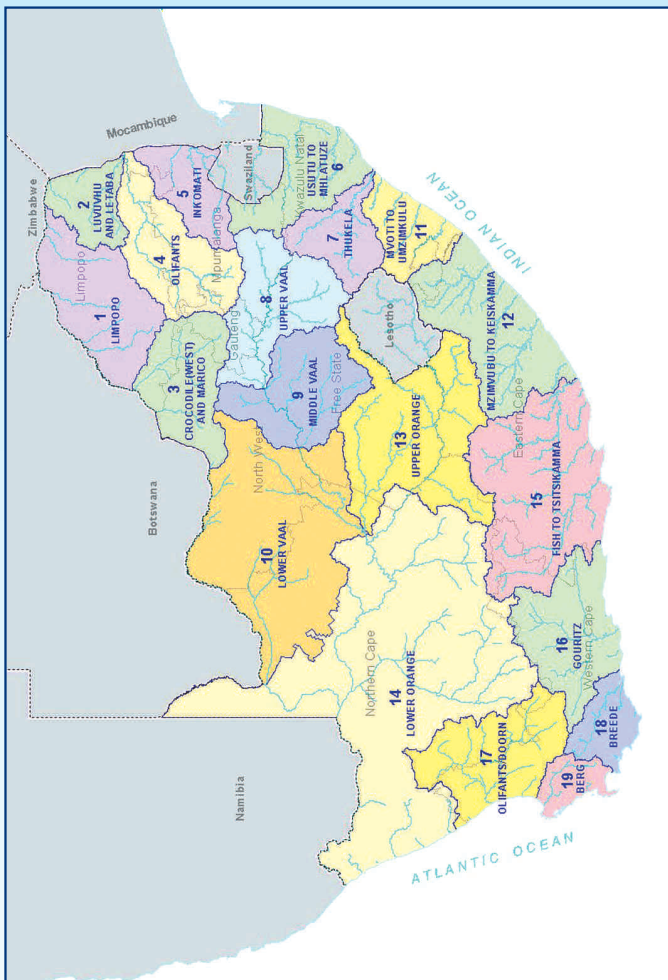
Summary of sectoral Water Resource Management Charges per Water Management Area

| WATER MANAGEMENT AREA | | SECTORAL UNIT COST IN C/M ³ | | |
|-----------------------|------------------------|--|---|-------------|
| No | Water Management Area | Domestic/ Industrial | Agriculture: Irrigation and watering livestock | Forestry |
| 1 | LIMPOPO | 1.23 | 0.89 | 0.83 |
| 2 | LUVUVHU AND LETABA | 1.60 | 1.07 | 0.98 |
| 3 | CROCODILE (W) & MARICO | 0.85 | 0.70 | 0.68 |
| 4 | OLIFANTS | 0.89 | 0.75 | 0.70 |
| 5 | INKOMATI | 0.85 | 0.63 | 0.57 |
| 6 | USUTU TO MHLATHUZE | 0.42 | 0.42 | 0.41 |
| 7 | THUKELA | 0.34 | 0.34 | 0.33 |
| 8 | UPPER VAAL | 1.30 | 0.79 | 0.79 |
| 9 | MIDDLE VAAL | 0.98 | 0.80 | N/A |
| 10 | LOWER VAAL | 0.69 | 0.56 | N/A |
| 11 | MVOTI TO UMZIMKULU | 0.91 | 0.87 | 0.84 |
| 12 | MZIMVUBU TO KEISKAMMA | 0.97 | 0.67 | 0.56 |
| 13 | UPPER ORANGE | 0.38 | 0.38 | N/A |
| 14 | LOWER ORANGE | 0.62 | 0.47 | N/A |
| 15 | FISH TO TSITSIKAMMA | 1.45 | 0.61 | 0.38 |
| 16 | GOURITZ | 2.11 | 0.72 | 0.56 |
| 17 | OLIFANTS / DOORN | 1.16 | 0.70 | 0.64 |
| 18 | BREEDE | 2.64 | 0.64 | 0.41 |
| 19 | BERG | 3.25 | 0.76 | 0.61 |
| | Average | 1.19 | 0.67 | 0.61 |

ALL CHARGES EXCLUDE VAT

C/M³ (cent per cubic metre)

Map of the Water Management Areas and provincial borders



How to convert cents per m³ to Rand per hectare

The charges listed in the table for irrigation purposes are provided in cents per m³. Should you wish to convert it to Rand per hectare, please follow the instructions below:

Take the total charge in cent per m³ and divide it by 100. Take the answer and multiply it with the m³ quota per hectare to get to the Rand per hectare amount. *For example see next page:*

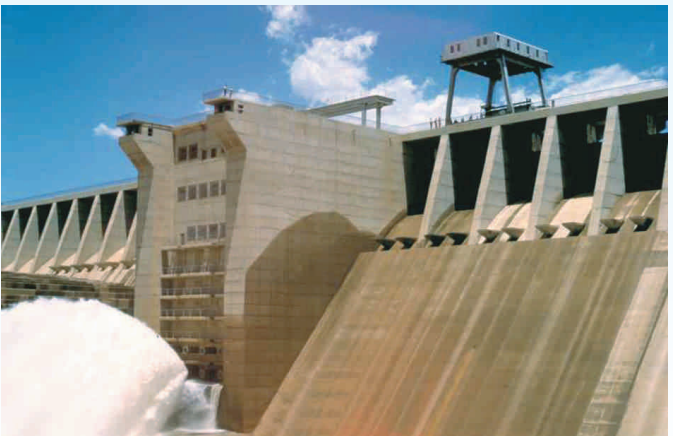
For example:

Total Charge: 3.70 cent per m³ /100 = R 0.037 per m³

Total charge R 0.037 per m³ x 3 000 (m³ quota of water per hectare) = R111 per hectare

Understanding the abbreviations

| | |
|----------------------|---|
| WMA | Water Management Area A map of the Water Management Areas is printed in this document for easy identification. |
| m³ | Cubic metre |
| Ha | Hectare |
| B | Bi-annually |
| A | Annually |
| TBA | To be advised |
| Billing Fre | Billing Frequency |



| WMA (refer map) | Foot Notes | Government Water Scheme Name | Scheme Management Parameter | Charges For Irrigation Purposes | | | Charges For Domestic and Industrial use | Charges For The TCTA |
|-----------------|------------|---|--|---------------------------------|-------------------------------|--------------|---|-------------------------------|
| | | | | m ³ Quota Per Ha | Charge - Cent Per Cubic Metre | Billing Fre. | | |
| 3 | | CROCODILE RIVER (HARTBEEPOORT DAM) | DAM | 6200 | 0.98 | B | 2.67 | Charge - Cent Per Cubic Metre |
| 3 | | CROCODILE RIVER (HARTBEEPOORT DAM) | FROM THE CANAL SYSTEM | 6200 | 0.98 | B | 2.67 | |
| 3 | | CROCODILE RIVER (NORTHWEST) GWS | BOREHOLES WITHIN REDLINE | | 0.63 | B | | |
| 3 | | CROCODILE RIVER (NORTHWEST) GWS | FROM THE KLIPVOOR DAM | | 0.63 | B | | |
| 3 | | CROCODILE RIVER (NORTHWEST) GWS | FROM THE ROODEKOPJES DAM | | 0.63 | B | 38.84 | |
| 3 | | CROCODILE RIVER (NORTHWEST) GWS | FROM THE VAALKOP DAM AND CANAL | | 0.63 | B | 38.84 | |
| 3 | | ELANDS RIVER (LINDLEYSPOORT DAM) | FROM THE CANAL | 5300 | 9.31 | B | 17.43 | |
| 3 | | ELANDS RIVER (LINDLEYSPOORT DAM) | FROM THE DAM | | | | 6.56 | |
| 3 | | GREATER MAFIKENG WATER SUPPLY (UPPER MOLOPO AND SETUMO DAM) | SCHEME (NO OTHER DIFFERENTIATORS HAVE BEEN IDENTIFIED) | | | | 89.30 | |
| 10 | | HARTS RIVER (SPITSKOP DAM) | FROM THE DAM | 7700 | 1.00 | B | | |
| 10 | | HARTS RIVER (SPITSKOP DAM) | FROM THE RIVER | 7700 | 1.00 | B | 12.02 | |
| 3 | | HEX RIVER (BOSPOORT DAM) | SCHEME (NO OTHER DIFFERENTIATORS HAVE BEEN IDENTIFIED) | | | | 55.06 | |
| 1 | | HOUTRIVIER DAM | FROM THE DAM | | | | 63.13 | |
| 3 | | KLEIN MARICO RIVER (KLEIN MARICOPOORT DAM) | FROM THE CANAL SYSTEM | 5300 | 10.71 | B | 23.96 | |
| 3 | | KLEIN MARICO RIVER (KLEIN MARICOPOORT DAM) | FROM THE DAM (INCLUDING RIVER) | | | | 10.26 | |
| 3 | | KOSTER RIVER (KOSTER DAM) | FROM THE DAM | 5300 | 6.13 | B | 26.49 | |
| 3 | | MARICO RIVER (MARICO BOSVELD AND KROMELLENBOOG DAMS) | FROM THE CANAL SYSTEM | 5300 | 9.68 | B | | |
| 3 | | MARICO RIVER (MARICO BOSVELD AND KROMELLENBOOG DAMS) | FROM THE DAM | | | | 19.94 | |
| 3 | SERV | MARICO RIVER (MOLATEDI DAM) | WATER FROM THE SCHEME TO DERDEPOORT IRRIGATION BOARD | 10295 | 1.61 | B | | |

| WMA (refer map) | Foot Notes | Government Water Scheme Name | Scheme Management Parameter | Charges For Irrigation Purposes | | | Charges For Domestic and Industrial use | Charges For The TCTA |
|-----------------|------------|---|---|---------------------------------|-------------------------------|--------------|---|----------------------|
| | | | | m ³ Quota Per Ha | Charge - Cent Per Cubic Metre | Billing Fre. | | |
| 1 | | MASHASHANE DAM | FROM THE DAM | | | | 63.13 | |
| 1 | | MOGALAKWENA RIVER (GLEN ALPINE DAM) | FROM THE DAM | 6200 | 8.09 | B | | |
| 1 | SERV | MOGOL RIVER (MOKOLO DAM) | CONSUMER(S) WITH SERVITUDE ARRANGEMENT OF "0" TARIFF ALLOCATION OF 10 400 000 CUBIC METRE FROM THE MOGOL RIVER (MOKOLO DAM) GWS | | 4.22 | B | | |
| 1 | | MOGOL RIVER (MOKOLO DAM) | RAW WATER TO ISCOR FROM THE MOGOL RIVER (MOKOLO DAM) GWS | | | | 39.72 | |
| 8 | | MOOI RIVER (BOSKOP AND KLERKSKRAAL DAMS) | CANAL | 7700 | 6.48 | B | | |
| 8 | SERV | MOOI RIVER (BOSKOP AND KLERKSKRAAL DAMS) | FROM THE CANAL SYSTEM TO POTCHEFSTROOM | | 43.82 | B | | |
| 8 | | MOOI RIVER (BOSKOP AND KLERKSKRAAL DAMS) | RIVER | 7700 | 1.84 | B | | |
| 1 | | MUTSHEDZI DAM | FROM THE DAM | | | | 63.13 | |
| 1 | | NWANEDI/LUPHEPHE SCHEME | FROM THE DAM VIA RIVER ABOVE CROSS DAM | 8400 | 6.04 | B | | |
| 1 | | NWANEDI/LUPHEPHE SCHEME | FROM THE DAM VIA RIVER BELOW CROSS DAM | 8400 | 6.04 | B | | |
| 1 | | NWANEDI/LUPHEPHE SCHEME | FROM THE DAM VIA RIVER, WEIR AND PIPELINE | | | | 28.47 | |
| 1 | | NZHELELE RIVER (NZHELELE DAM) | FROM THE CANAL SYSTEM | 8400 | 5.39 | B | 18.51 | |
| 1 | | NZHELELE RIVER (NZHELELE DAM) | FROM THE DAM AND THE RIVER | 8400 | 2.09 | B | | |
| 3 | | PIENAARS RIVER (ROODEPLAAT DAM) | FROM THE CANAL SYSTEM | 6500 | 12.64 | B | 20.20 | |
| 3 | | PIENAARS RIVER (ROODEPLAAT DAM) | FROM THE DAM | | | | 9.37 | |
| 9 | | RHENOSTER RIVER (KOPPIES DAM) | RAW WATER FROM THE CANAL SYSTEM | 6100 | 17.59 | B | | |
| 9 | | RHENOSTER RIVER (KOPPIES DAM) | RAW WATER FROM THE DAM AND RIVER | 6100 | 4.20 | B | 15.68 | |
| 1 | | RIETFONTEIN 1 DAM | FROM RIETFONTEIN 1 DAM | | | | 63.13 | |
| 9 | | SAND-VET RIVER (ERFENIS AND ALLEMANS-KRAAL DAM) | FROM ANY OF THE DAMS (DIRECTLY) | 7200 | 1.66 | B | 7.09 | |

| WMA (refer map) | Foot Notes | Government Water Scheme Name | Scheme Management Parameter | Charges For Irrigation Purposes | | | Charges For Domestic and Industrial use | Charges For The TCTA |
|-----------------|------------|---|---|---------------------------------|-------------------------------|--------------|---|----------------------|
| | | | | m ³ Quota Per Ha | Charge - Cent Per Cubic Metre | Billing Fre. | | |
| 9 | | SAND-VET RIVER (ERFENIS AND ALLEMANS-KRAAL DAM) | FROM THE CANAL SYSTEM | 7200 | 10.12 | B | 21.02 | |
| 9 | | SAND-VET RIVER (ERFENIS AND ALLEMANS-KRAAL DAM) | FROM THE RIVER | 7200 | 7.97 | B | | |
| 9 | SERV | SAND-VET RIVER (ERFENIS AND ALLEMANS-KRAAL DAM) | HOOPSTAD MUNICIPALITY (RAW WATER FROM THE RIVER) | | | | 21.02 | |
| 9 | SERV | SAND-VET RIVER (ERFENIS AND ALLEMANS-KRAAL DAM) | THEUNISSEN MUNICIPALITY (RAW WATER FROM THE CANAL SYSTEM) | | | | 21.02 | |
| 9 | | SCHOONSPRUIT (ELANDSKUIL AND RIETSPRUIT DAMS) | SCHOONSPRUIT GOVERNMENT WATER SCHEME | 7700 | 7.66 | B | 32.00 | |
| 8 | | SLANG RIVER GWS (ZAAIHOEK DAM) - [WMA UPPER VAAL] | FROM THE PIPELINES AND THE AQUEDUCT TO GROOTDRAAI DAM | | | | 28.34 | 122.40 |
| 1 | | STERK RIVER (DOORNDRAAI DAM) | CANAL | 7200 | 7.97 | B | | |
| 1 | | STERK RIVER (DOORNDRAAI DAM) | DAM | | | | 32.00 | |
| 3 | | STERKSTROOM (BUFFELSPOORT DAM) | FROM THE CANAL SYSTEM | | 7.98 | B | | |
| 3 | | STERKSTROOM (BUFFELSPOORT DAM) | FROM THE DAM | | | | 5.13 | |
| 3 | | STERKSTROOM (MIDDELKRAAL DAM) | SCHEME | 6200 | 1.00 | B | | |
| 8 | | TUGELA-VAAL GWS [WMA - UPPER VAAL] | FROM STERKFFONTEIN DAM [TUGELA-VAAL RIVER AQUADUCT] | | | | 98.62 | |
| 8 | | USUTU-VAAL RIVER (PHASE 1)(GROOTDRAAI DAM - [WMA UPPER VAAL]) | GROOTDRAAI TO KNOPPIESFONTEIN | | | | 71.02 | 122.40 |
| 8 | | USUTU-VAAL RIVER (PHASE 1)(GROOTDRAAI DAM - [WMA UPPER VAAL]) | GROOTDRAAI TO TUTUKA | | | | 70.25 | 122.40 |
| 8 | | USUTU-VAAL RIVER (PHASE 1)(GROOTDRAAI DAM - [WMA UPPER VAAL]) | KNOPPIESFONTEIN TO BOSSIESPRUIT | | | | 76.86 | 122.40 |

| WMA (refer map) | Foot Notes | Government Water Scheme Name | Scheme Management Parameter | Charges For Irrigation Purposes | | | Charges For Domestic and Industrial use | Charges For The TCTA |
|-----------------|------------|--|---|---------------------------------|-------------------------------|--------------|---|----------------------|
| | | | | m ³ Quota Per Ha | Charge - Cent Per Cubic Metre | Billing Fre. | | |
| 8 | | USUTU-VAAL RIVER (PHASE 1)(GROOTDRAAI DAM - [WMA UPPER VAAL] | KNOPPIESFONTEIN TO TRICHARDSFONTEIN | | | | 113.16 | 122.40 |
| 8 | | USUTU-VAAL RIVER (PHASE 1)(GROOTDRAAI DAM - [WMA UPPER VAAL] | MATLA ESKOM | | | | 28.34 | 122.40 |
| 8 | | USUTU-VAAL RIVER (PHASE 1)(GROOTDRAAI DAM - [WMA UPPER VAAL] | NAAUWPOORT TO DUVHA | | | | 325.47 | 122.40 |
| 8 | | USUTU-VAAL RIVER (PHASE 1)(GROOTDRAAI DAM - [WMA UPPER VAAL] | PUMPED FROM TRICHARDSFONTEIN DAM TO OTHER USERS | | | | 190.89 | 122.40 |
| 8 | | USUTU-VAAL RIVER (PHASE 1)(GROOTDRAAI DAM - [WMA UPPER VAAL] | PURIFICATION WORKS | | | | 87.70 | 122.40 |
| 8 | | USUTU-VAAL RIVER (PHASE 1)(GROOTDRAAI DAM - [WMA UPPER VAAL] | RIETFONTEIN TO MATLA | | | | 148.56 | 122.40 |
| 8 | | USUTU-VAAL RIVER (PHASE 1)(GROOTDRAAI DAM - [WMA UPPER VAAL] | TUTUKA ESKOM | | | | 28.34 | 122.40 |
| 9 | SERV | VAAL RIVER (SYSTEM) - FREE STATE REGION | ANGLOGOLD VAAL RIVER | | | | 28.30 | 122.40 |
| 9 | | VAAL RIVER (SYSTEM) - FREE STATE REGION | USERS IN THE MIDDLE VAAL WMA | | | | 28.30 | 122.40 |
| 10 | SERV | VAAL RIVER (SYSTEM) - LOWER VAAL WEIR TO SCHMITSDRIFT | BARKLEY WEST MUNICIPALITY | | | | 28.30 | 122.40 |
| 10 | | VAAL RIVER (SYSTEM) - LOWER VAAL WEIR TO SCHMITSDRIFT | RIVER | 9140 | 0.56 | B | 28.30 | 122.40 |
| 10 | SERV | VAAL RIVER (SYSTEM) - LOWER VAAL WEIR TO SCHMITSDRIFT | SOL PLAATJIE MUN-KIMBERLEY | | | | 28.30 | 122.40 |
| 10 | SERV | VAAL RIVER (SYSTEM) - LOWER VAAL WEIR TO SCHMITSDRIFT | WARRENTON MUNICIPALITY | | | | 28.30 | 122.40 |
| 10 | SERV | VAAL RIVER (SYSTEM) - MIDDLE VAAL BLOEMHOF TO WEIR | BLOEMHOF MUNICIPALITY | | | | 28.30 | 122.40 |

| WMA (refer map) | Foot Notes | Government Water Scheme Name | Scheme Management Parameter | Charges For Irrigation Purposes | | | Charges For Domestic and Industrial use | Charges For The TCTA |
|-----------------|------------|--|--|---------------------------------|-------------------------------|--------------|---|----------------------|
| | | | | m ³ Quota Per Ha | Charge - Cent Per Cubic Metre | Billing Fre. | | |
| 10 | SERV | VAAL RIVER (SYSTEM) - MIDDLE VAAL BLOEMHOF TO WEIR | CHRISTIANA MUNICIPALITY | | | | 28.30 | 122.40 |
| 10 | | VAAL RIVER (SYSTEM) - MIDDLE VAAL BLOEMHOF TO WEIR | RIVER | | 0.56 | B | 28.30 | 122.40 |
| 8 | SERV | VAAL RIVER (SYSTEM) UPPER VAAL | A. GREEN [VAAL RIVER DEV SCHEME] | | | | 28.30 | 122.40 |
| 8 | SERV | VAAL RIVER (SYSTEM) UPPER VAAL | AELIONS CLUB [VAAL RIVER DEV SCHEME] | | | | 28.30 | 122.40 |
| 8 | SERV | VAAL RIVER (SYSTEM) UPPER VAAL | BALFOUR MUNICIPALITY [VAAL RIVER DEV SCHEME] | | | | 28.30 | 122.40 |
| 8 | SERV | VAAL RIVER (SYSTEM) UPPER VAAL | BETHAL MUN - A | | | | 28.30 | 122.40 |
| 8 | SERV | VAAL RIVER (SYSTEM) UPPER VAAL | BETHAL MUN - B | | | | 28.30 | 122.40 |
| 8 | SERV | VAAL RIVER (SYSTEM) UPPER VAAL | BETHAL MUN - C | | | | 28.30 | 122.40 |
| 8 | SERV | VAAL RIVER (SYSTEM) UPPER VAAL | BETHLEHEM MUN - APPLE ORCHIDS | | | | 28.30 | 122.40 |
| 8 | SERV | VAAL RIVER (SYSTEM) UPPER VAAL | BETHLEHEM MUN - SAULSPOORT DAM 1 | | | | 28.30 | 122.40 |
| 8 | SERV | VAAL RIVER (SYSTEM) UPPER VAAL | BETHLEHEM MUN - SAULSPOORT DAM 2 | | | | 28.30 | 122.40 |
| 8 | SERV | VAAL RIVER (SYSTEM) UPPER VAAL | BETHLEHEM MUN - UNICO FEEDLOT | | | | 28.30 | 122.40 |
| 8 | SERV | VAAL RIVER (SYSTEM) UPPER VAAL | DENEYSVILLE METRO | | | | 28.30 | 122.40 |
| 8 | SERV | VAAL RIVER (SYSTEM) UPPER VAAL | DIHLABENG LOCAL MUNICIPALITY: BETHLEHEM | | | | 28.30 | 122.40 |
| 8 | SERV | VAAL RIVER (SYSTEM) UPPER VAAL | DIHLABENG MUN [REITZ] | | | | 28.30 | 122.40 |
| 8 | SERV | VAAL RIVER (SYSTEM) UPPER VAAL | EARLY BIRD FARM [VAAL] | | | | 28.30 | 122.40 |
| 8 | SERV | VAAL RIVER (SYSTEM) UPPER VAAL | ERASMUS J.P. | | | | 28.30 | 122.40 |
| 8 | SERV | VAAL RIVER (SYSTEM) UPPER VAAL | ERIKA KWEKERY [VAAL RIVER DEV SCHEME] | | | | 28.30 | 122.40 |
| 8 | SERV | VAAL RIVER (SYSTEM) UPPER VAAL | ERMELO MUN - GOLF | | | | 28.30 | 122.40 |
| 8 | SERV | VAAL RIVER (SYSTEM) UPPER VAAL | ERMELO MUN - MINE | | | | 28.30 | 122.40 |
| 8 | SERV | VAAL RIVER (SYSTEM) UPPER VAAL | ERMELO MUN - TOWN | | | | 28.30 | 122.40 |

| WMA (refer map) | Foot Notes | Government Water Scheme Name | Scheme Management - Parameter | Charges For Irrigation Purposes | | | Charges For Domestic and Industrial use | Charges For The TCTA |
|-----------------------|---------------|--------------------------------|--|------------------------------------|--|-----------------|---|-------------------------|
| | | | | m ³ Quota Per Ha | Charge - Cent Per Cubic Metre | Billing Fre. | | |
| 8 | SERV | VAAL RIVER (SYSTEM) UPPER VAAL | F. SUPRA (E.P. ROSSOU) [VAAL RIVER DEV SCHEME] | | | | 28.30 | 122.40 |
| 8 | SERV | VAAL RIVER (SYSTEM) UPPER VAAL | FRANKFORT A MUNICIPALITY | | | | 28.30 | 122.40 |
| 8 | SERV | VAAL RIVER (SYSTEM) UPPER VAAL | FRANKFORT B MUNICIPALITY | | | | 28.30 | 122.40 |
| 8 | SERV | VAAL RIVER (SYSTEM) UPPER VAAL | G. COLEMAN [VAAL RIVER DEV SCHEME] | | | | 28.30 | 122.40 |
| 8 | SERV | VAAL RIVER (SYSTEM) UPPER VAAL | HARRISMITH MUN - BERGSIG BOTANICAL | | | | 28.30 | 122.40 |
| 8 | SERV | VAAL RIVER (SYSTEM) UPPER VAAL | HARRISMITH MUN - FEEDLOTS | | | | 28.30 | 122.40 |
| 8 | SERV | VAAL RIVER (SYSTEM) UPPER VAAL | HARRISMITH MUN - GRAVITATIONAL LINE | | | | 28.30 | 122.40 |
| 8 | SERV | VAAL RIVER (SYSTEM) UPPER VAAL | HARRISMITH MUN - NUWEJAARSPRUIT | | | | 28.30 | 122.40 |
| 8 | SERV | VAAL RIVER (SYSTEM) UPPER VAAL | HARRISMITH MUN - TOWN CENTRE | | | | 28.30 | 122.40 |
| 8 | SERV | VAAL RIVER (SYSTEM) UPPER VAAL | HARRISMITH MUN - TSHIANE | | | | 28.30 | 122.40 |
| 8 | SERV | VAAL RIVER (SYSTEM) UPPER VAAL | HEILBRON MUN | | | | 28.30 | 122.40 |
| 8 | SERV | VAAL RIVER (SYSTEM) UPPER VAAL | INDICOT FARMING [VAAL RIVER DEV SCHEME] | | | | 28.30 | 122.40 |
| 8 | SERV | VAAL RIVER (SYSTEM) UPPER VAAL | KARAN ESTATES [VAAL RIVER DEV SCHEME] | | | | 28.30 | 122.40 |
| 8 | SERV | VAAL RIVER (SYSTEM) UPPER VAAL | LAMBERTI M.J. | | | | 28.30 | 122.40 |
| 8 | SERV | VAAL RIVER (SYSTEM) UPPER VAAL | METSIMAHOLO LOCAL MUNICIPALITY (ORANJEVILLE) | | | | 28.30 | 122.40 |
| 8 | SERV | VAAL RIVER (SYSTEM) UPPER VAAL | MORGENZON MUN | | | | 28.30 | 122.40 |
| 8 | SERV | VAAL RIVER (SYSTEM) UPPER VAAL | MSUKALIGWA MUNICIPALITY; BREYTON LOCAL AUTHORITY | | | | 28.30 | 122.40 |
| 8 | SERV | VAAL RIVER (SYSTEM) UPPER VAAL | PARKIN BRICKS SAND AND CLAY [VAAL RIVER DEV SCHEME] | | | | 28.30 | 122.40 |
| 8 | SERV | VAAL RIVER (SYSTEM) UPPER VAAL | PETRUS STEYN MUNICIPALITY (GOLF) | | | | 28.30 | 122.40 |
| 8 | SERV | VAAL RIVER (SYSTEM) UPPER VAAL | PETRUS STEYN MUNICIPALITY (TOWN) | | | | 28.30 | 122.40 |
| 8 | SERV | VAAL RIVER (SYSTEM) UPPER VAAL | PRETORIUS W.P. | | | | 28.30 | 122.40 |
| 8 | SERV | VAAL RIVER (SYSTEM) UPPER VAAL | R.F. GARMANY [VAAL RIVER DEV SCHEME] | | | | 28.30 | 122.40 |

| WMA (refer map) | | Government Water Scheme Name | Scheme Management Parameter | Charges For Irrigation Purposes | | | Charges For Domestic and Industrial use | Charges For The TCTA |
|-----------------|------|--------------------------------|--|---------------------------------|-------------------------------|--------------|---|-------------------------------|
| Foot Notes | | | | m ³ Quota Per Ha | Charge - Cent Per Cubic Metre | Billing Fre. | Charge - Cent Per Cubic Metre | Charge - Cent Per Cubic Metre |
| 8 | SERV | VAAL RIVER (SYSTEM) UPPER VAAL | RAND WATER | | | | 28.30 | 122.40 |
| 8 | | VAAL RIVER (SYSTEM) UPPER VAAL | SCHEME | | | | 28.30 | 122.40 |
| 8 | SERV | VAAL RIVER (SYSTEM) UPPER VAAL | STANDERTON MUN TOWN | | | | 28.30 | 122.40 |
| 8 | SERV | VAAL RIVER (SYSTEM) UPPER VAAL | T. FORD [VAAL RIVER DEV SCHEME] | | | | 28.30 | 122.40 |
| 8 | SERV | VAAL RIVER (SYSTEM) UPPER VAAL | TENNANT S.R. | | | | 28.30 | 122.40 |
| 8 | SERV | VAAL RIVER (SYSTEM) UPPER VAAL | TWEELING MUNICIPALITY | | | | 28.30 | 122.40 |
| 8 | SERV | VAAL RIVER (SYSTEM) UPPER VAAL | VILLIERS MUNICIPALITY | | | | 28.30 | 122.40 |
| 8 | SERV | VAAL RIVER (SYSTEM) UPPER VAAL | WARDEN MUNICIPALITY | | | | 28.30 | 122.40 |
| 10 | | VAAL RIVER (VAALHARTS) | KLIP DAM - BARKLY CANALS AND VAALHARTS SMALLHOLDINGS | | 0.62 | A/B | 28.30 | 122.40 |
| 10 | | VAAL RIVER (VAALHARTS) | RESOURCE POOR FARMERS - GANSPAN | | 0.56 | B | | |
| 10 | | VAAL RIVER (VAALHARTS) | RESOURCE POOR FARMERS - GANSPAN [Commence 2001/2] | | 0.56 | B | | |
| 10 | | VAAL RIVER (VAALHARTS) | RESOURCE POOR FARMERS - GANSPAN [Commence 2002/3] | | 0.56 | B | | |
| 10 | | VAAL RIVER (VAALHARTS) | RESOURCE POOR FARMERS - GANSPAN [Commence 2003/4] | | 0.56 | B | | |
| 10 | | VAAL RIVER (VAALHARTS) | RESOURCE POOR FARMERS - TAUNG CANAL SYSTEM | | 0.56 | B | | |
| 10 | | VAAL RIVER (VAALHARTS) | RESOURCE POOR FARMERS - TAUNG CANAL SYSTEM [Commence 2001/2] | | 0.56 | B | | |
| 10 | | VAAL RIVER (VAALHARTS) | RESOURCE POOR FARMERS - TAUNG CANAL SYSTEM [Commence 2002/3] | | 0.56 | B | | |
| 10 | | VAAL RIVER (VAALHARTS) | RESOURCE POOR FARMERS - TAUNG CANAL SYSTEM [Commence 2003/4] | | 0.56 | B | | |

| WMA (refer map) | | Foot Notes | Government Water Scheme Name | Scheme Management Parameter | Charges For Irrigation Purposes | | | Charges For Domestic and Industrial use | Charges For The TCTA |
|-----------------|--|------------|-------------------------------------|---|---------------------------------|-------------------------------|--------------|---|-------------------------------|
| | | | | | m ³ Quota Per Ha | Charge - Cent Per Cubic Metre | Billing Fre. | Charge - Cent Per Cubic Metre | Charge - Cent Per Cubic Metre |
| 10 | | | VAAL RIVER (VAALHARTS) | VAALHARTS MAIN, NORTH AND WEST CANALS | | 0.62 | A/B | 28.30 | 122.40 |
| 10 | | | VAAL-GAMAGARA REGIONAL WATER SUPPLY | CLIFTON TO ROSCOE [PURIFIED WATER FROM VAAL RIVER] | | | | 273.07 | 122.40 |
| 10 | | | VAAL-GAMAGARA REGIONAL WATER SUPPLY | FROM SISHEN GROUNDWATER [KALAHARI EAST] | | 50.13 | B | | |
| 10 | | | VAAL-GAMAGARA REGIONAL WATER SUPPLY | KNEUKEL TO CLIFTON [PURIFIED WATER FROM VAAL RIVER] | | | | 185.16 | 122.40 |
| 10 | | | VAAL-GAMAGARA REGIONAL WATER SUPPLY | PURIFICATION WORKS TO KNEUKEL INCLUDING DELPORTSHOOP [PURIFIED WATER FROM VAAL RIVER] | | | | 132.86 | 122.40 |
| 10 | | | VAAL-GAMAGARA REGIONAL WATER SUPPLY | ROSCOE TO BLACKROCK [PURIFIED WATER FROM VAAL RIVER] | | | | 314.17 | 122.40 |
| 10 | | | VAAL-GAMAGARA REGIONAL WATER SUPPLY | ROSCOE TO OLIFANTSHOEK [PURIFIED WATER FROM VAAL RIVER] | | | | 264.05 | 122.40 |

Foot notes and additional comments

| Foot notes | |
|----------------------------|---|
| Serv | In case where a zero cent charge is to be applied in respect of volumes smaller or equal to servitude volume, only the charge to be applied per every one m ³ in excess of the servitude arrangement is reflected. |
| Additional comments | |
| 1. | Charges for domestic and industrial use: to be applied per every one m ³ . |
| 2. | Charges for irrigation purposes: to be applied per every one m ³ . |
| 3. | Charges for the TCTA: to be applied per every one m ³ . |
| 4. | Any of the following changes made to the charges, incorporated in the relevant brochure, will be updated and published on the DWAF-website. These include: a) Additional charges b) Changes to the charges incorporated in the brochure: - Charges that are no longer to be applied (declared as OBSOLETE); - Changes to charges; - Changes to volume variables. |
| 5. | In general, charges reflect the full amount without consideration of subsidies. Invoices reflect the amounts inclusive of subsidies. |



**For more information, contact your nearest office
of the Department of Water Affairs and Forestry**

**Mpumalanga Regional Office
Mr Johan van Aswegen
Tel: (013) 755-1674-7**

**Free State Regional Office
Mr Tseliso Ntili
Tel: (051) 430 3134**

**KwaZulu-Natal Regional Office
Mr JGG Hansmann
Tel: (031) 336 2700**

**Gauteng Regional Office
Mr Hennie Smit
Tel: (012) 392 1301**

**Limpopo Regional Office
Prof Ola Busari
Tel: (015) 290 1217**

**North West Regional Office
Mr Chedwick Lobakeng
Tel: (018) 384 3270-6**

**Eastern Cape Regional Office
Mr Zolile Keke /
Mr Dewald Coetzee
Tel: (043) 643 4352**

**Northern Cape Regional Office
Mr LJ Snyders
Tel: (053) 831 4125**

**Western Cape Regional Office
Mr Rashid Khan
Tel: (021) 950 7100**

