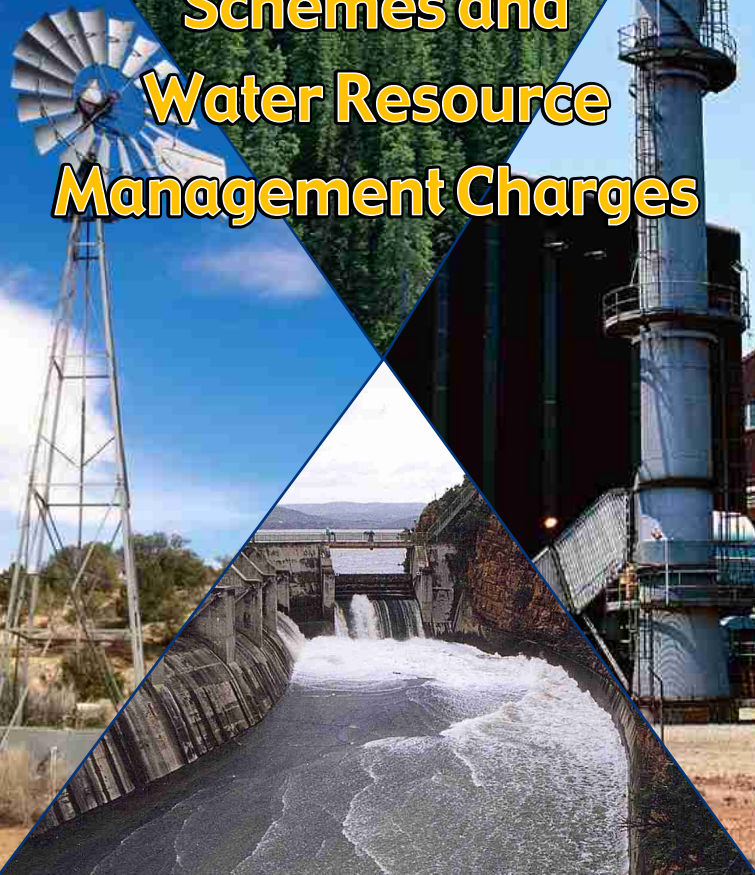


Water Use Charges for Government Water Schemes and Water Resource Management Charges



2004/2005
Western Cape Region



**Your partner in building
a better life for all**

www.dwaf.gov.za

**PROUDLY
SOUTH AFRICAN**





Preface

Included in this brochure are schedules containing Water Resource Management and Water Consumptive charges that will come into effect from 1 April 2004.

Before announcing these charges a series of consultations were held by the top management of the Department of Water Affairs and Forestry (DWAf), with key national stakeholders including amongst others SALGA, SAAWU, TAU, NAFU, Agri-SA and Forestry SA.

The consultation meetings led to a better understanding of the practical implementation of the Department's Raw Water Pricing Strategy and the drivers necessitating charge increases. The charges set out in these tables have been amended with respect to a number of issues raised at the consultation meetings, but do not represent a consensus position of stakeholders and DWAf. The charges have been determined by DWAf in accordance with the mandate of the National Water Act and the Raw Water Pricing Strategy.

In order to improve the process of further consultations, it was agreed that future discussions on water charge increases will be held well in advance of announcement dates. This will enable stakeholders to properly consult with their members and make meaningful recommendations to the Department.

It was further agreed that DWAf will, during the 2004/5 financial year, initiate a process of reviewing the Raw Water Pricing Strategy. It is intended that the review of this strategy will be completed in time for the 2006/7 charges to be based on the revised strategy. Because of the requirements for public consultation it is not possible to finalise the revision in time to influence the 2005/6 charges which will, therefore, still be calculated under the existing strategy.



Mike Muller
Director-General

DEPARTMENT OF WATER AFFAIRS AND FORESTRY

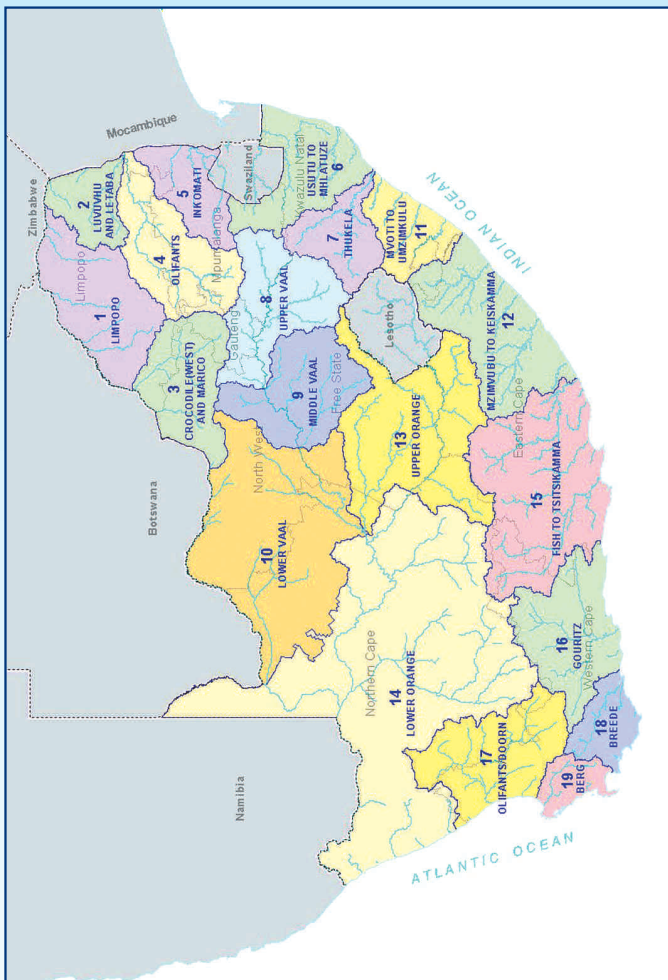
Summary of sectoral Water Resource Management Charges per Water Management Area

WATER MANAGEMENT AREA		SECTORAL UNIT COST IN C/M ³		
No	Water Management Area	Domestic/ Industrial	Agriculture: Irrigation and watering livestock	Forestry
1	LIMPOPO	1.23	0.89	0.83
2	LUVUVHU AND LETABA	1.60	1.07	0.98
3	CROCODILE (W) & MARICO	0.85	0.70	0.68
4	OLIFANTS	0.89	0.75	0.70
5	INKOMATI	0.85	0.63	0.57
6	USUTU TO MHLATHUZE	0.42	0.42	0.41
7	THUKELA	0.34	0.34	0.33
8	UPPER VAAL	1.30	0.79	0.79
9	MIDDLE VAAL	0.98	0.80	N/A
10	LOWER VAAL	0.69	0.56	N/A
11	MVOTI TO UMZIMKULU	0.91	0.87	0.84
12	MZIMVUBU TO KEISKAMMA	0.97	0.67	0.56
13	UPPER ORANGE	0.38	0.38	N/A
14	LOWER ORANGE	0.62	0.47	N/A
15	FISH TO TSITSIKAMMA	1.45	0.61	0.38
16	GOURITZ	2.11	0.72	0.56
17	OLIFANTS / DOORN	1.16	0.70	0.64
18	BREEDE	2.64	0.64	0.41
19	BERG	3.25	0.76	0.61
	Average	1.19	0.67	0.61

ALL CHARGES EXCLUDE VAT

C/M³ (cent per cubic metre)

Map of the Water Management Areas and provincial borders



How to convert cents per m³ to Rand per hectare

The charges listed in the table for irrigation purposes are provided in cents per m³. Should you wish to convert it to Rand per hectare, please follow the instructions below:

Take the total charge in cent per m³ and divide it by 100. Take the answer and multiply it with the m³ quota per hectare to get to the Rand per hectare amount. *For example see next page:*

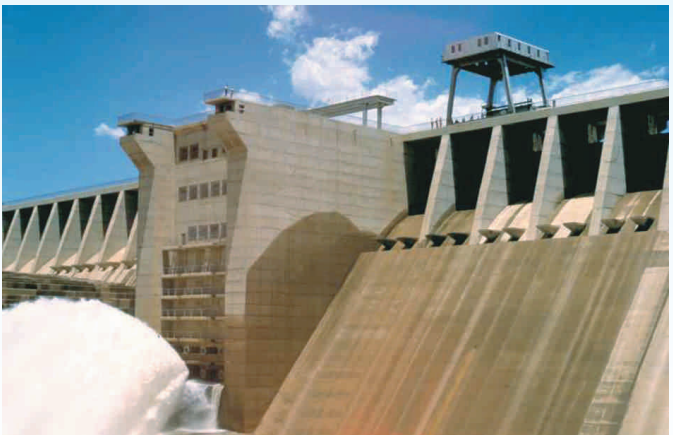
For example:

Total Charge: 3.70 cent per m^3 /100 = R 0.037 per m^3

Total charge R 0.037 per m^3 x 3 000 (m^3 quota of water per hectare) = R111 per hectare

Understanding the abbreviations

WMA	Water Management Area A map of the Water Management Areas is printed in this document for easy identification.
m^3	Cubic metre
Ha	Hectare
B	Bi-annually
A	Annually
TBA	To be advised
Billing Fre	Billing Frequency



WMA (refer map)		Foot Notes	Government Water Scheme Name	Scheme Management Parameter	Charges For Irrigation Purposes			Charges For Domestic and Industrial use
					m ³ Quota Per Ha	Charge - Cent Per Cubic Metre	Billing Fre.	Charge - Cent Per Cubic Metre
19			BERG RIVER (VOëLVLEI DAM)	BOREHOLE (SALDANHA UNDERGROUND)				8.59
19			BERG RIVER (VOëLVLEI DAM)	DAM				7.54
19			BERG RIVER (VOëLVLEI DAM)	FROM TWENTY-FOUR RIVERS CANAL TO THE IRRIGATION BOARD	8500	1.09	B	
19			BERG RIVER (VOëLVLEI DAM)	IRRIGATION FROM BERG RIVER DOWNSTREAM OF THE VOëLVLEI DAM	3000	4.45	B	
19			BERG RIVER (VOëLVLEI DAM)	RAW WATER FROM MISVERSTAND DAM				8.59
19	SERV		BERG RIVER (VOëLVLEI DAM)	RAW WATER FROM THE DAM TO PRETORIA PORTLAND CEMENT CO LTD				7.54
19			BERG RIVER (VOëLVLEI DAM)	RAW WATER FROM VOëLVLEI DAM TO CAPE TOWN MUNICIPALITY				28.80
19	SERV		BERG RIVER (VOëLVLEI DAM)	RAW WATER FROM VOëLVLEI DAM TO PIKETBERG MUNICIPALITY				7.54
16			BRAND RIVER (MIERTJIESKRAAL DAM)	DAM	7000	5.78	B	
18	SERV		BREEDE RIVER (GREATER BRANDVLEI AND KWAGGASKLOOF DAMS)	BREEDE RIVER CONSERVATION BOARD		0.77	B	
18	SERV		BREEDE RIVER (GREATER BRANDVLEI AND KWAGGASKLOOF DAMS)	FROM ANY OF THE DAMS TO BRANDVLEI WINE CELLARS				15.90
18			BREEDE RIVER (GREATER BRANDVLEI AND KWAGGASKLOOF DAMS)	PURCHASED WATER RIGHTS & OTHER BOARDS (EXCLUDING BREEDE RIVER CONSERVATION BOARD)		1.77	B	
16	SERV		BUFFALO RIVER (FLORISKRAAL-DAM)	C VAN WYK PREFERENTIAL RIGHT	7620	1.23	B	
16			BUFFALO RIVER (FLORISKRAAL-DAM)	SCHEME	7620	1.23	B	
18			BUFFELJAGTS RIVER (BUFFELJAGTS DAM)	FROM THE DAM	6100	1.35	B	10.53
18			BUFFELJAGTS RIVER (BUFFELJAGTS DAM)	FROM THE DAM TO GOVT DEPTS: BUFFELSJAGTS PRISON				10.53

WMA (refer map)	Foot Notes	Government Water Scheme Name	Scheme Management Parameter	Charges For Irrigation Purposes			Charges For Domestic and Industrial use
				m ³ Quota Per Ha	Charge - Cent Per Cubic Metre	Billing Fre.	
16		CORDIERS RIVER (OUKLOOF DAM)	DAM	9000	4.02	B	
16		DUIVENHOKS RIVER (DUIVENHOKS DAM)	FROM DUIVENHOKS RIVER (DUIVENHOKS DAM)	6000	0.87	B	2.75
18		ELANDS RIVER (ELANDS-KLOOF DAM)	EXISTING DEVELOPMENT FROM THE ELANDS RIVER (ELANDS-KLOOF DAM)	6860	0.08	B	
18		ELANDS RIVER (ELANDS-KLOOF DAM)	FROM THE DISTRIBUTION SYSTEM (CANAL & PIPELINE) FROM THE ELANDS RIVER (ELANDS-KLOOF DAM)				41.02
18		ELANDS RIVER (ELANDS-KLOOF DAM)	NEW DEVELOPMENT (DAM COSTS INCLUDED) FROM THE ELANDS RIVER (ELANDS-KLOOF DAM)	6860	1.24	B	
18		ELANDS RIVER (ELANDS-KLOOF DAM)	RAW WATER FROM THE DAM				12.81
18	SERV	ELANDS RIVER (ELANDS-KLOOF DAM)	TO VILLIERSDORP CO-OPERATIVE LTD - FROM THE DISTRIBUTION SYSTEM (CANAL & PIPELINE) FROM THE ELANDS RIVER (ELANDS-KLOOF DAM)				41.02
18	SERV	ELANDS RIVER (ELANDS-KLOOF DAM)	TO VILLIERSDORP MUNICIPALITY FROM THE DISTRIBUTION SYSTEM (CANAL & PIPELINE) FROM THE ELANDS RIVER (ELANDS-KLOOF DAM)				41.02
16		GAMKA RIVER (BEAUFORT WEST DAM)	DAM				53.85
16		GAMKA RIVER (GAMKA-POORT DAM)	DAM	7900	2.67	B	
16		GOUKOU RIVER (GROOTBOS-BERG DAM)	DAM	7000	1.05	B	
16		HARTENBOS RIVER (HARTBEESKUIL DAM)	FROM THE DAM	6000	2.63	B	11.27
16		KAMANASSIE RIVER (KAMANASIE DAM)	SCHEME	6500	1.14	B	
18		KEISIES RIVER (PIETERSFONTEIN DAM)	SCHEME (NO OTHER DIFFERENTIATORS HAVE BEEN IDENTIFIED)	2500	2.93	B	
18		KINGNA RIVER (POORTJIESKLOOF DAM)	SCHEME	4500	5.11	B	
18		KONINGS RIVER (KLIPBERG DAM)	SCHEME	7500	2.13	B	

WMA (refer map)	Foot Notes	Government Water Scheme Name	Scheme Management Parameter	Charges For Irrigation Purposes			Charges For Domestic and Industrial use
				m ³ Quota Per Ha	Charge - Cent Per Cubic Metre	Billing Fre.	
16		KORENTE-VETTE RIVER (KORENTE-VETTE DAM)	CANAL	7000	0.67	B	5.17
16		KORENTE-VETTE RIVER (KORENTE-VETTE DAM)	FROM THE DAM				2.56
16		LEEU RIVER (LEEU-GAMKA DAM)	SCHEME	11000	1.97	B	
16		MOSSEL BAY - KLIPHEUWEL DAM	SCHEME				74.10
16		MOSSEL BAY - WOLWEDANS DAM	FROM THE MOSSEL BAY - WOLWEDANS DAM (BOLTONS & MOSSREF EXCLUDED)		7.67	TBA	74.10
16	SERV	MOSSEL BAY - WOLWEDANS DAM	TO BOLTONS FROM THE MOSSEL BAY - WOLWEDANS DAM				74.10
16	SERV	MOSSEL BAY - WOLWEDANS DAM	TO MOSSREF FROM THE MOSSEL BAY - WOLWEDANS DAM				74.10
16		OLIFANTS RIVER (STOMPDRIFT DAM)	FROM SCHEME FOR STAGE 1	5300	1.21	B	
16		OLIFANTS RIVER (STOMPDRIFT DAM)	FROM SCHEME FOR STAGE 2	2360	1.21	B	
16		OLIFANTS RIVER (STOMPDRIFT DAM)	FROM SCHEME FOR STAGE 3	660	1.21	B	
16		OLIFANTS RIVER (STOMPDRIFT DAM)	FROM THE CANAL SYSTEM				37.85
16		OLIFANTS RIVER (STOMPDRIFT DAM)	FROM THE DAM				6.78
17		OLIFANTS RIVER (VAN RHYNSDORP - CLANWILLIAM DAM)	FROM SCHEME	12200	2.15	B	3.19
17		OLIFANTS RIVER (VAN RHYNSDORP - CLANWILLIAM DAM)	RIVER ABSTRACTION BETWEEN CLANWILLIAM AND BULSHOEK DAM	12200	1.72	B	
17		OLIFANTS RIVER (VAN RHYNSDORP - BULSHOEK DAM)	SCHEME	12200	2.19	B	20.33
19		PALMIET RIVER (ROCKVIEW & KOGELBERG DAMS) - [WMA BERG]	FROM DAM TO CAPE TOWN METROPOLITAN COUNCIL				30.71

WMA (refer map)		Foot Notes	Government Water Scheme Name	Scheme Management Parameter	Charges For Irrigation Purposes			Charges For Domestic and Industrial use
					m ³ Quota Per Ha	Charge - Cent Per Cubic Metre	Billing Fre.	Charge - Cent Per Cubic Metre
18			PALMIET RIVER (ROCKVIEW & KOGELBERG DAMS) - [WMA BREEDE]	PALMIET SCHEME TO BEUKES FARM	6000	15.28	B	
19			RIVIERSONDEREND-BERG RIVER (THEEWATERSKLOOF DAM AND JONKERSHOEK TUNNEL SYSTEM) - [WMA BERG]	AT FRANSCHHOEK, DASBOS & STELLENBOSCH TUNNEL		4.97	B	29.32
19			RIVIERSONDEREND-BERG RIVER (THEEWATERSKLOOF DAM AND JONKERSHOEK TUNNEL SYSTEM) - [WMA BERG]	AT FRANSCHHOEK, DASBOS & STELLENBOSCH TUNNEL - COMPENSATION RELEASE		4.97	B	
19			RIVIERSONDEREND-BERG RIVER (THEEWATERSKLOOF DAM AND JONKERSHOEK TUNNEL SYSTEM) - [WMA BERG]	AT FRANSCHHOEK, DASBOS & STELLENBOSCH TUNNEL OUTLETS TO BERG RIVER - SUB DISTRICT 1		4.97	B	
19			RIVIERSONDEREND-BERG RIVER (THEEWATERSKLOOF DAM AND JONKERSHOEK TUNNEL SYSTEM) - [WMA BERG]	AT FRANSCHHOEK, DASBOS & STELLENBOSCH TUNNEL OUTLETS TO BERG RIVER - SUB DISTRICT 2		4.97	B	
19			RIVIERSONDEREND-BERG RIVER (THEEWATERSKLOOF DAM AND JONKERSHOEK TUNNEL SYSTEM) - [WMA BERG]	AT FRANSCHHOEK, DASBOS & STELLENBOSCH TUNNEL OUTLETS TO BERG RIVER - SUB DISTRICT 3		4.97	B	
19			RIVIERSONDEREND-BERG RIVER (THEEWATERSKLOOF DAM AND JONKERSHOEK TUNNEL SYSTEM) - [WMA BERG]	AT FRANSCHHOEK, DASBOS & STELLENBOSCH TUNNEL OUTLETS TO OTHER CONSUMERS				24.72
19	SERV		RIVIERSONDEREND-BERG RIVER (THEEWATERSKLOOF DAM AND JONKERSHOEK TUNNEL SYSTEM) - [WMA BERG]	AT FRANSCHHOEK, DASBOS & STELLENBOSCH TUNNEL OUTLETS TO PAARL MUNICIPALITY - SUMMER				24.72

WMA (refer map)	Foot Notes	Government Water Scheme Name	Scheme Management Parameter	Charges For Irrigation Purposes			Charges For Domestic and Industrial use
				m ³ Quota Per Ha	Charge - Cent Per Cubic Metre	Billing Fre.	
19	SERV	RIVIERSENDER-BERG RIVER (THEEWATERSKLOOF DAM AND JONKERSHOEK TUNNEL SYSTEM) - [WMA BERG]	AT FRANSCHHOEK, DASBOS & STELLENBOSCH TUNNEL OUTLETS TO PAARL MUNICIPALITY - WINTER				24.72
18		RIVIERSENDER-BERG RIVER (THEEWATERSKLOOF DAM AND JONKERSHOEK TUNNEL SYSTEM) - [WMA BREEDE]	ABSTRACTIONS FROM DAM	1.40	B		4.14
18	SERV	RIVIERSENDER-BERG RIVER (THEEWATERSKLOOF DAM AND JONKERSHOEK TUNNEL SYSTEM) - [WMA BREEDE]	AT THEEWATERSKLOOF OUTLET AND FROM THE RIVER	1.40	B		
16		ROODEFONTEIN DAM	SCHEME (NO OTHER DIFFERENTIATORS HAVE BEEN IDENTIFIED)	2.45	B		66.19
18		SANDDRIFT RIVER (ROODE ELSBERG AND LAKENVALLEI DAMS)	FROM THE DISTRIBUTION SYSTEM				17.59
18	SERV	SANDDRIFT RIVER (ROODE ELSBERG AND LAKENVALLEI DAMS)	SCHEME (NO OTHER DIFFERENTIATORS HAVE BEEN IDENTIFIED)	6000	B		
18		SANDDRIFT RIVER (ROODE ELSBERG AND LAKENVALLEI DAMS)	SCHEME DEPT. OF AGRICULTURE - EXPERIMENTAL FARM	5100	B		
18		SANDDRIFT RIVER (ROODE ELSBERG AND LAKENVALLEI DAMS)	SCHEME ORIGINAL SCHEDULING	1500	B		
18		SANDDRIFT RIVER (ROODE ELSBERG AND LAKENVALLEI DAMS)	SCHEME PURCHASED WATER RIGHTS	6500	B		
16		TIERKLOOF DAM	SCHEME (NO OTHER DIFFERENTIATORS HAVE BEEN IDENTIFIED)				11.00
18		VALSCH RIVER (BEN ETIEVE DAM)	SCHEME	6000	B		

Foot notes and additional comments

Foot notes	
Serv	In case where a zero cent charge is to be applied in respect of volumes smaller or equal to servitude volume, only the charge to be applied per every one m ³ in excess of the servitude arrangement is reflected.
Additional comments	
1.	Charges for domestic and industrial use: to be applied per every one m ³ .
2.	Charges for irrigation purposes: to be applied per every one m ³ .
3.	Charges for the TCTA: to be applied per every one m ³ .
4.	Any of the following changes made to the charges, incorporated in the relevant brochure, will be updated and published on the DWAF-website. These include: <ul style="list-style-type: none"> a) Additional charges b) Changes to the charges incorporated in the brochure: <ul style="list-style-type: none"> - Charges that are no longer to be applied (declared as OBSOLETE); - Changes to charges; - Changes to volume variables.
5.	In general, charges reflect the full amount without consideration of subsidies. Invoices reflect the amounts inclusive of subsidies.

For more information, contact your nearest office of the Department of Water Affairs and Forestry

Mpumalanga Regional Office
Mr Johan van Aswegen
Tel: (013) 755-1674-7

North West Regional Office
Mr Chedwick Lobakeng
Tel: (018) 384 3270-6

Free State Regional Office
Mr Tseliso Ntli
Tel: (051) 430 3134

Eastern Cape Regional Office
Mr Zolile Keke /
Mr Dewald Coetzee
Tel: (043) 643 4352

KwaZulu-Natal Regional Office
Mr JGG Hansmann
Tel: (031) 336 2700

Northern Cape Regional Office
Mr LJ Snyders
Tel: (053) 831 4125

Gauteng Regional Office
Mr Hennie Smit
Tel: (012) 392 1301

Western Cape Regional Office
Mr Rashid Khan
Tel: (021) 950 7100

Limpopo Regional Office
Prof Ola Busari
Tel: (015) 290 1217