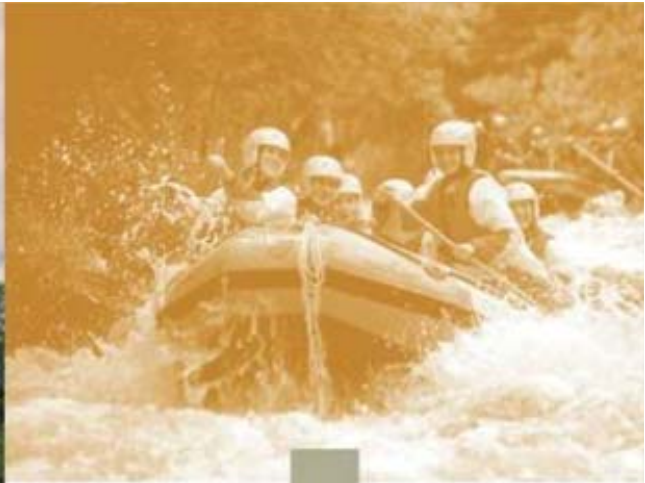




Phase 5 - Integrated Planning



water & forestry

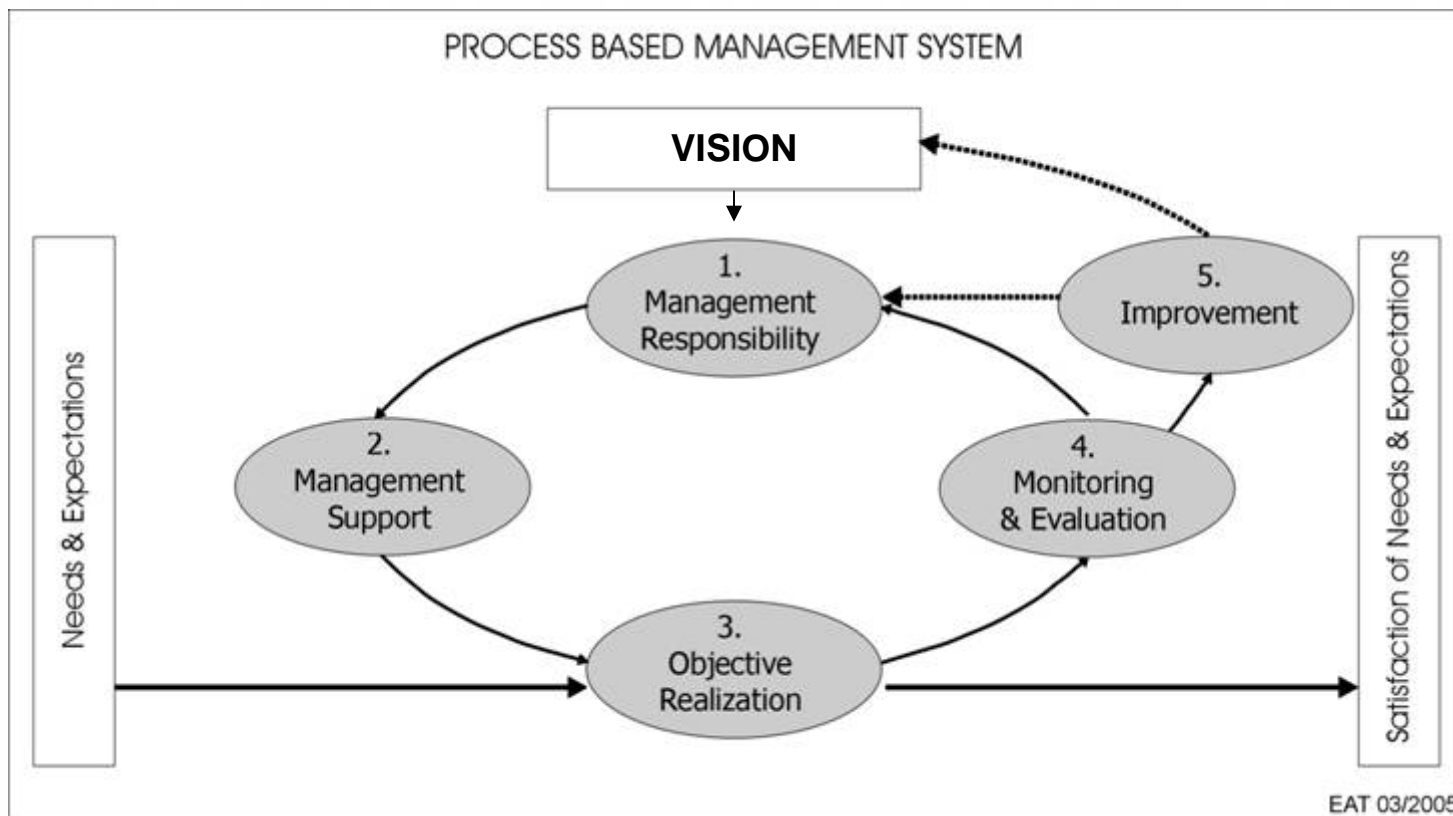
Department:
Water Affairs & Forestry
REPUBLIC OF SOUTH AFRICA



THE PLAN



THE ISO MANAGEMENT SYSTEM



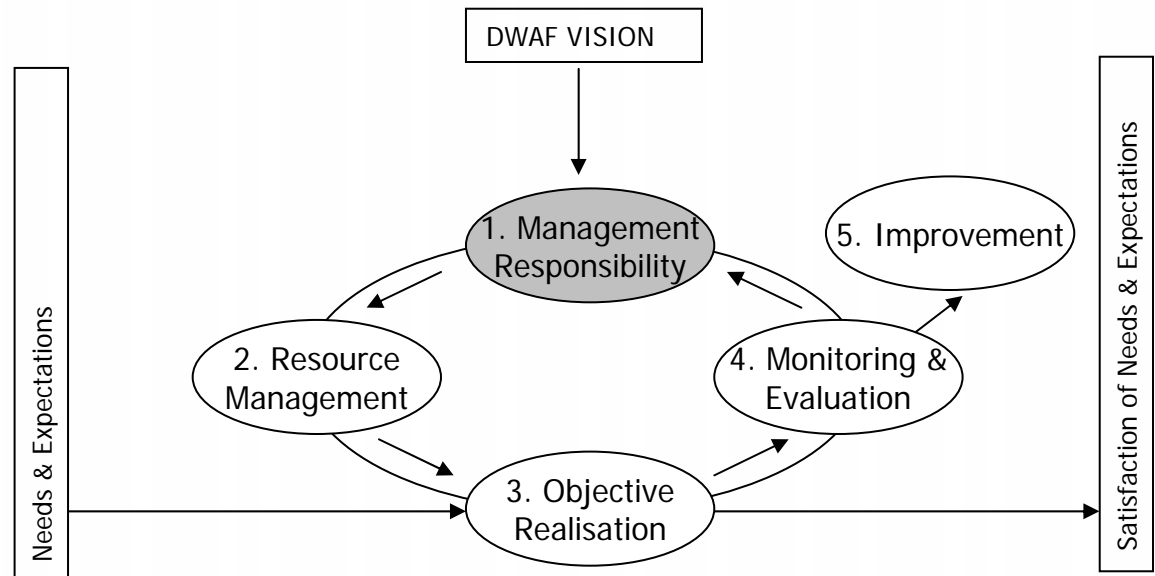
POLICY MANAGEMENT SYSTEM



MANAGEMENT SYSTEM COMPONENTS

Management Responsibility:

- Policy
- Planning
- Implementation
- Review



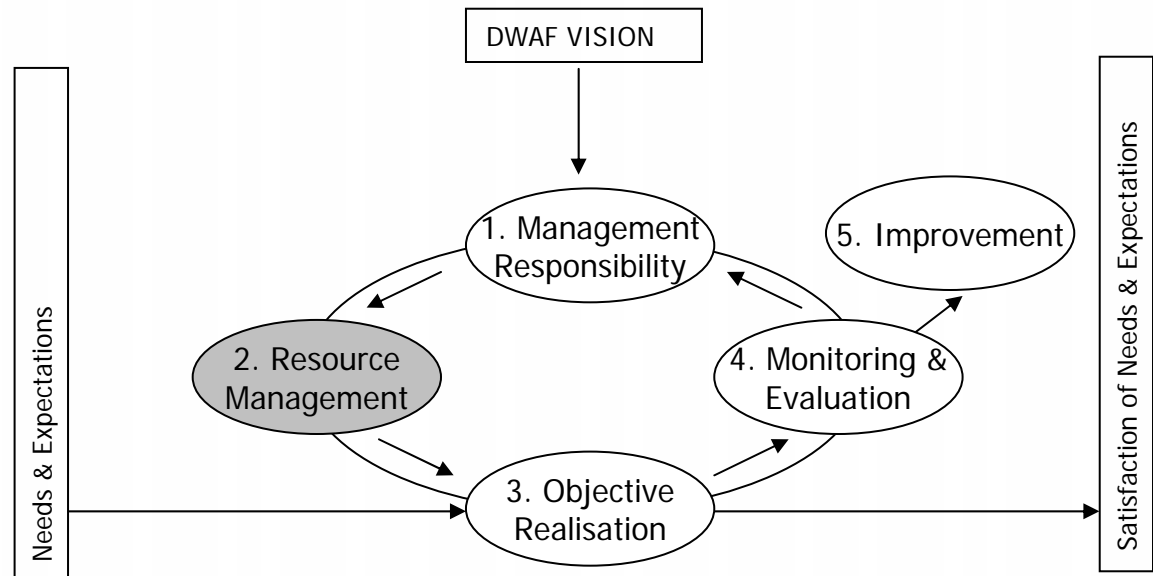
POLICY MANAGEMENT SYSTEM



MANAGEMENT SYSTEM COMPONENTS

Resource Management:

- Personnel
- Infrastructure
- Information
- Linkages & partnerships
- Financial budget



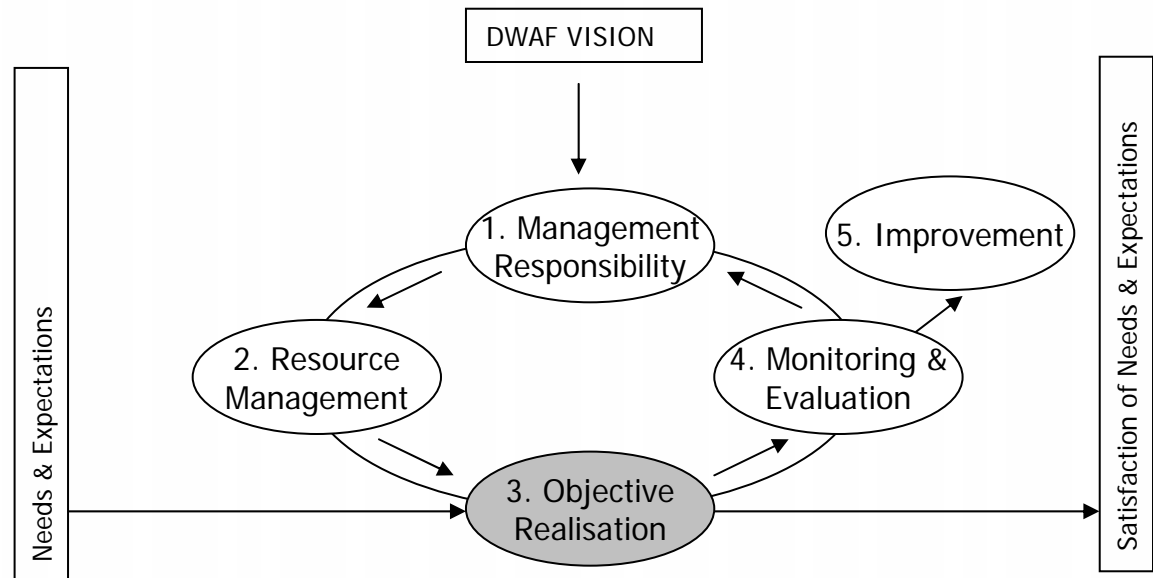
POLICY MANAGEMENT SYSTEM



MANAGEMENT SYSTEM COMPONENTS

Objective Realisation:

- Planning
- Communication
- Design
- Authorisation



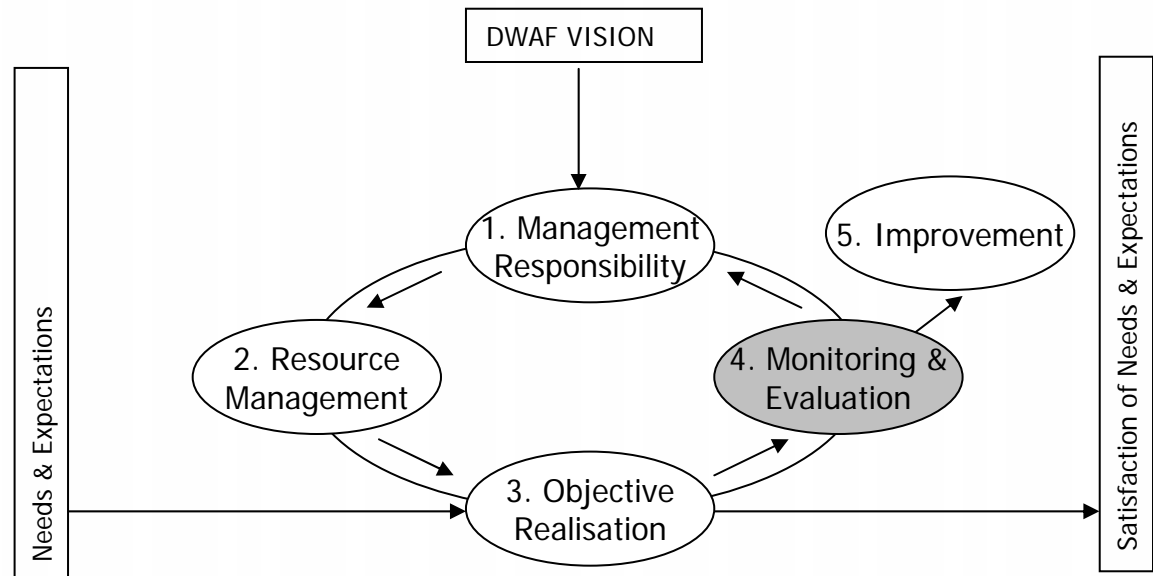
POLICY MANAGEMENT SYSTEM



MANAGEMENT SYSTEM COMPONENTS

Monitoring & Evaluation:

- Measurement
- Analysis
- Auditing

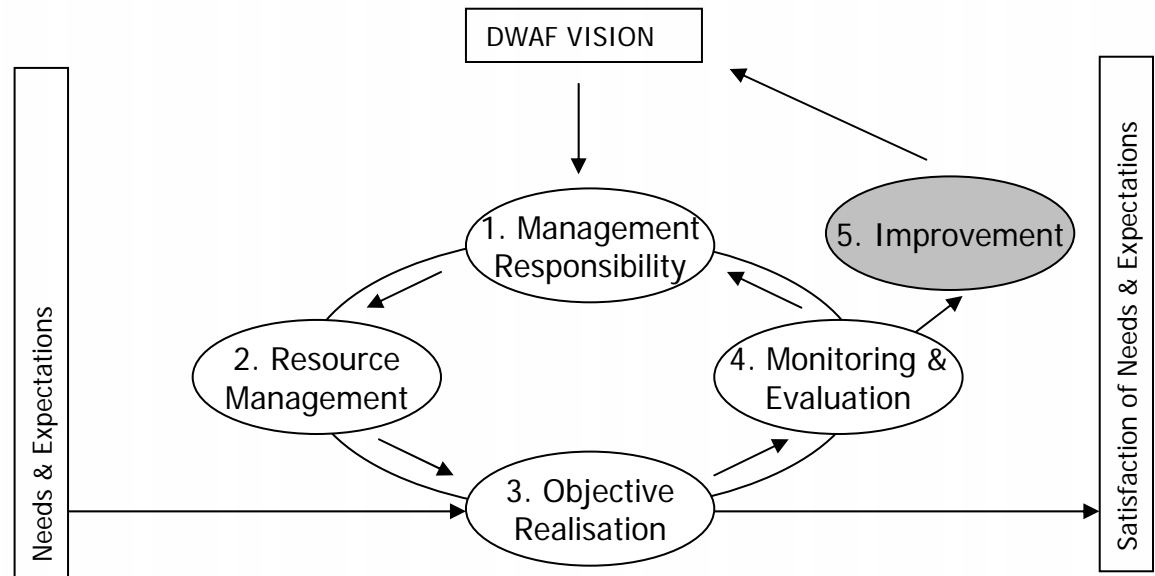


POLICY MANAGEMENT SYSTEM



MANAGEMENT SYSTEM COMPONENTS

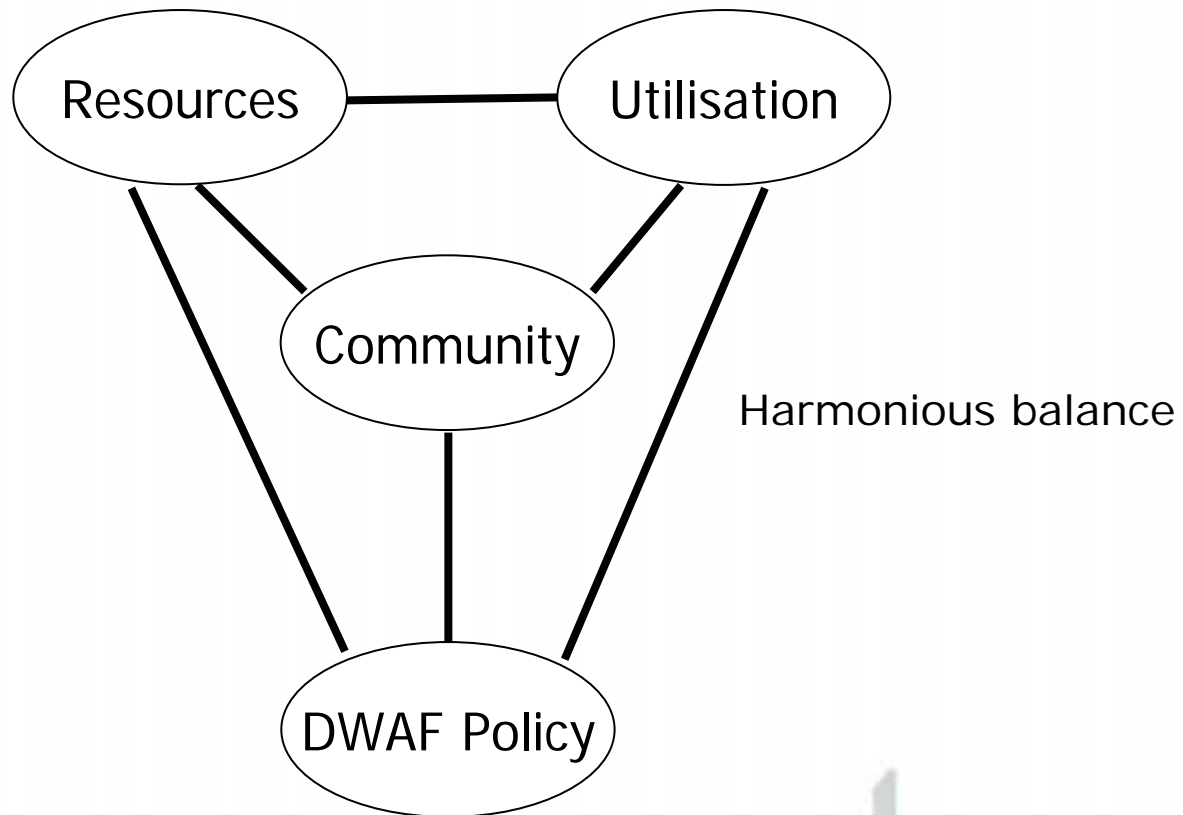
Improvement



THE PLAN



SUSTAINABILITY



THE PLAN



THE KEY PERFORMANCE AREAS TO ACHIEVING SUSTAINABILITY

- KPA 1: Resource management
- KPA 2: Utilisation
- KPA 3: Benefit flow

THE PLAN



COMPONENTS

- Vision
- Objectives
- Policy
- Strategy
- Operational guidelines
- Action plans
- Programmes

KPA 1: RESOURCE MANAGEMENT



DEFINITION

- Biodiversity
- Aquatic ecosystem
- Natural resources
- Cultural resources
- Expanding footprints

KPA 1: RESOURCE MANAGEMENT



THE PONGOLAPOORT DAM SUP AS A CASE STUDY

KPA 1: RESOURCE MANAGEMENT



THE PONGOLAPOORT DAM SUP AS A CASE STUDY

Vision for natural resource management:

The biodiversity, bio-physical processes, quality and resources associated with the Pongolapoort Dam and surrounding land are well conserved through the application of adaptive, yet ecologically sound management processes, and that the management institution of the Pongolapoort Dam obtain recognition for its endeavours in managing the water resource sustainably through utilisation.

That the Pongolapoort Dam obtains international recognition for its integrated management approach to conservation and use for recreational purposes, emanating in substantial benefits to both the host community and users.

KPA 1: RESOURCE MANAGEMENT



THE PONGOLAPOORT DAM SUP AS A CASE STUDY

Objectives for natural resource management:

Primary Objective:

The primary objective is to maintain or improve the quality of the water in the Pongolapoort Dam, as well as conserve the land surrounding the dam in terms of biodiversity, species and communities, and to utilise the resources in a sustainable and ethical manner, allowing for the natural functioning of the ecosystem.

Secondary Objective:

The secondary objective is to provide users of and visitors to the Pongolapoort Dam an enjoyable nature based experience by combining land and water based activities in highly marketable experiences, provided these do not compromise the primary objectives.

Tertiary Objective:

The tertiary objective is to sustainably utilise the natural resources in a manner that maximises income and other benefits without compromising the primary or secondary objectives.

KPA 1: RESOURCE MANAGEMENT



THE PONGOLAPOORT DAM SUP AS A CASE STUDY

Operational Guidelines for natural resource management:

- Water Releases
- Alien Plant Control
- Veld Burning
- Bush Encroachment:
- Erosion/Wave Action
- Game Stocking Rate
- Fishing
- Consumptive Utilisation
- Control of Illegal Use
- Waste

KPA 1: RESOURCE MANAGEMENT



THE PONGOLAPOORT DAM SUP AS A CASE STUDY

Vision for cultural resource management:

It is envisaged that the archaeological, historical and cultural resources surrounding the Pongolapoort Dam are well conserved through an appropriate, dynamic and adaptive management process, and that the management of the dam become recognised as a role model in integrated conservation management.

KPA 1: RESOURCE MANAGEMENT



THE PONGOLAPOORT DAM SUP AS A CASE STUDY

Objectives for cultural resource management:

Primary Objective:

The primary objective is to identify, document, research and protect the cultural resources within the Pongolapoort Dam Basin. Specific consideration will be given to the palaeontological, archaeological, historical and cultural heritage resources in the following order of priority: international, national, provincial, local.

Secondary Objective:

The secondary objective is to document the history of the Pongolapoort Dam and the surrounding area.

Tertiary Objective:

The tertiary objective is to provide insight into the Pongolo River System, the establishment of the Pongolapoort Dam, and the cultural heritage resources associated with the area to visitors and users in an engaging and interesting manner.

KPA 1: RESOURCE MANAGEMENT



THE PONGOLAPOORT DAM SUP AS A CASE STUDY

Operational Guidelines for cultural resource management:

- Identification
- Documentation
- Research
- Conservation
- Utilisation



KPA 2: UTILISATION

- Public access
- Commercial access

KPA 2: UTILISATION



RECREATION

DEFINING RECREATIONAL WATER USE:

Recreation is "a process of voluntary participation in a wide variety of activities that are undertaken during leisure and contributes to the improvement of general health and well being of both the individual and society". [Department of Sport and Recreation, 1998]

Recreational water use, can be defined as "the use of water for recreational purposes and includes all activities that require the use of water, including the surface of water for –

- (i) the exclusive purpose of sport, tourism or leisure;
- (ii) Personal or commercial purposes; or
- (iii) activities which contribute to the general health, well-being and skills development of individuals and society."

KPA 2: UTILISATION



PUBLIC ACCESS

- Service agreements
- Co-management agreements

KPA 2: UTILISATION



CLUBS, ARE THESE COMMERCIAL?

KPA 2: UTILISATION



COMMERCIAL = PPP

Definitions (National Treasury, PPP Toolkit)

- Vision
- Mission
- Possible site
- Legal capacity
- Specific stakeholders
- Support
- Checklists

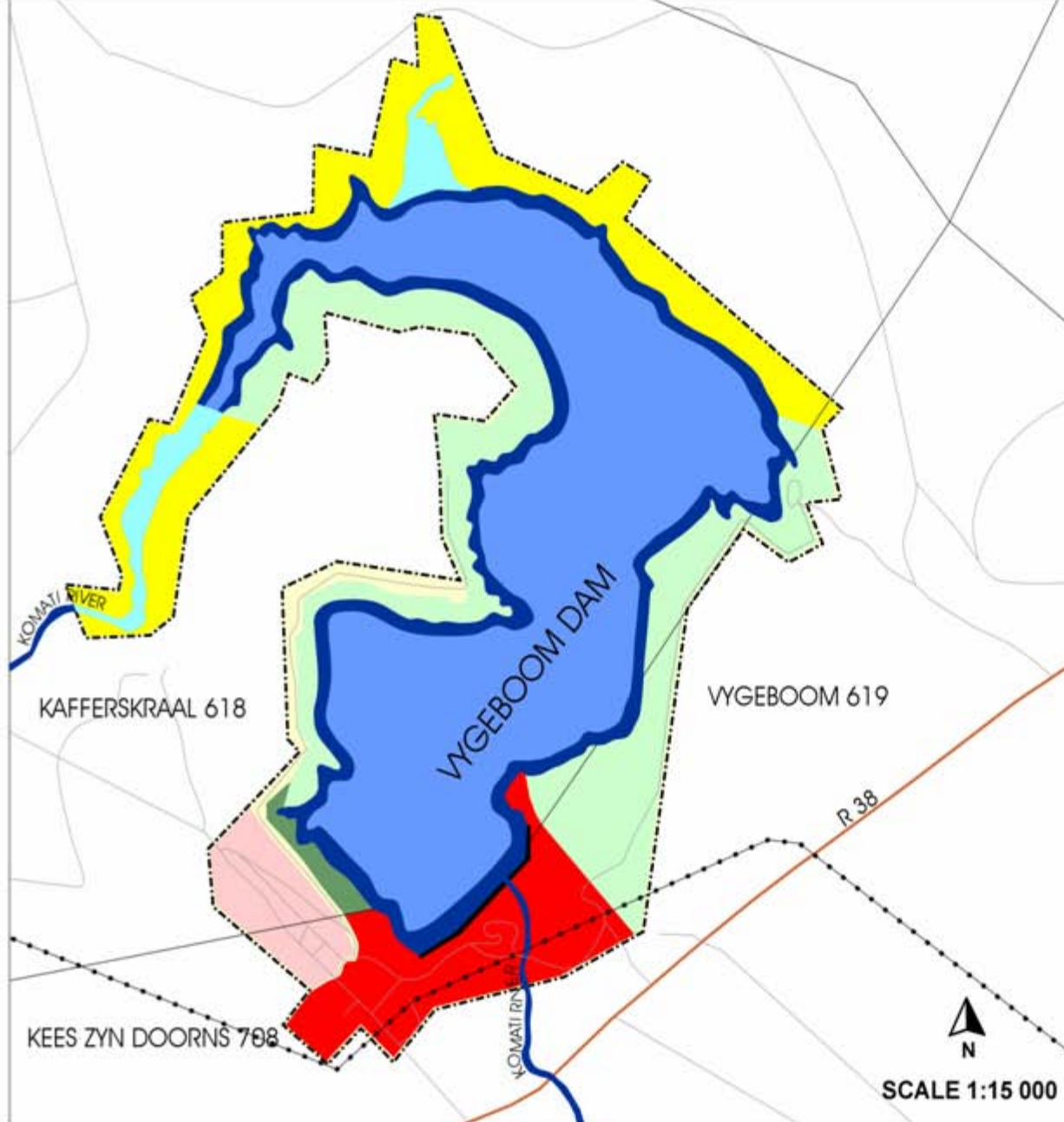
KPA 2: UTILISATION



STRATEGIC PLAN FOR COMMERCIALISATION

The Vygeboom Dam as a case study

VYGEBOOM DAM General Zonation



REFERENCE	
	Provincial Road R 38
	Gravel Road
	Power Line
	Purchase Boundary
	Security Zone
	Public Use Zone (Land)
	Public Use Zone (Water) (Unrestricted speed)
	Public Use Zone (Water) (Restricted speed)
	Limited Use Zone
	Conservation Zone
	Land Management Zone (Water User Association)
	Land Management Zone (Caretaker Agreement)
	Community Development Project Zone

date datum	2002/09/20
compiler samesteller	Ecotourism Afrika
ref no verw no	Vygeboom/Zonation
map no kaart no	Map no: 2

SCALE 1:15 000

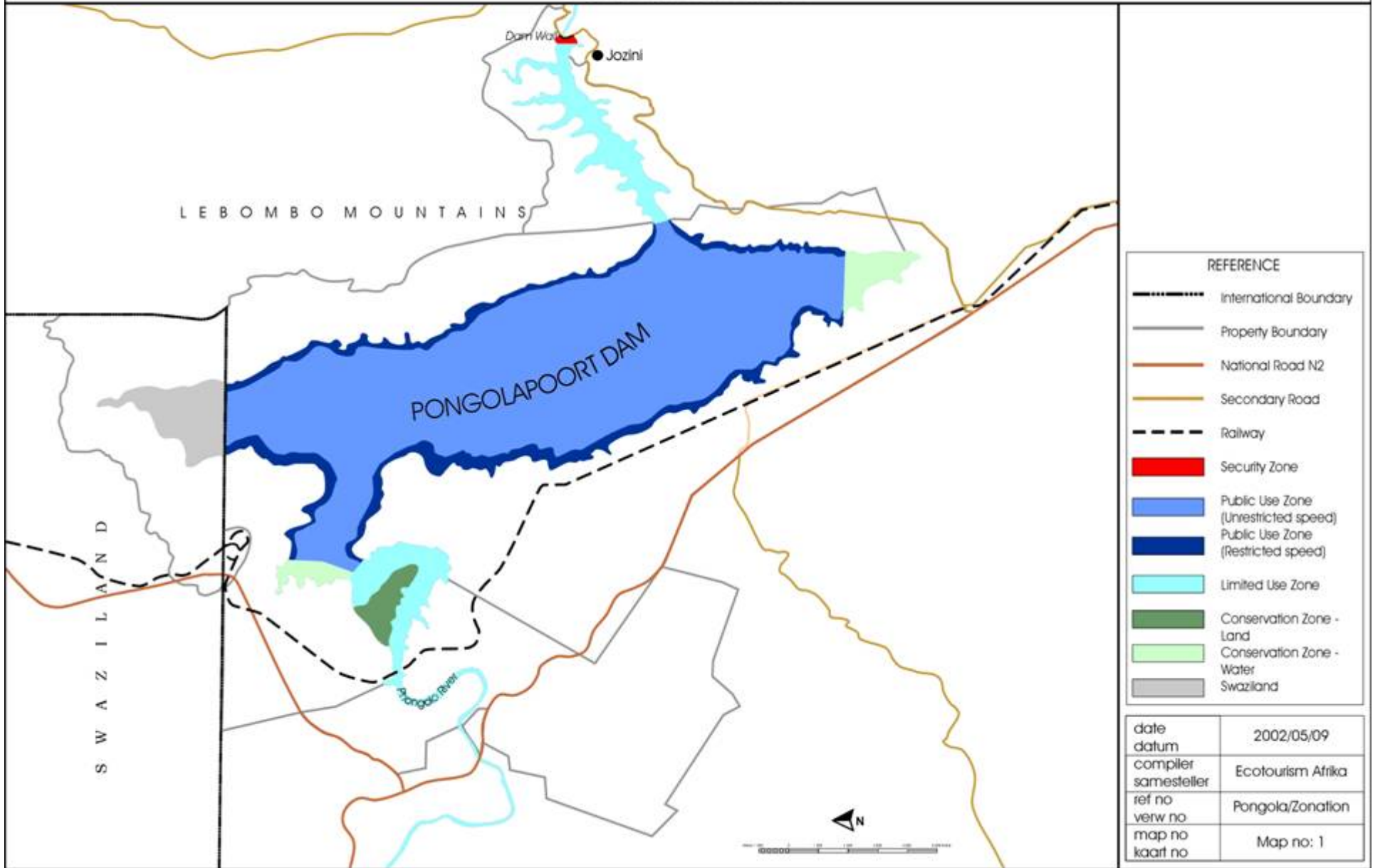
KPA 2: UTILISATION



STRATEGIC PLAN FOR COMMERCIALISATION

Pongolapoort Dam

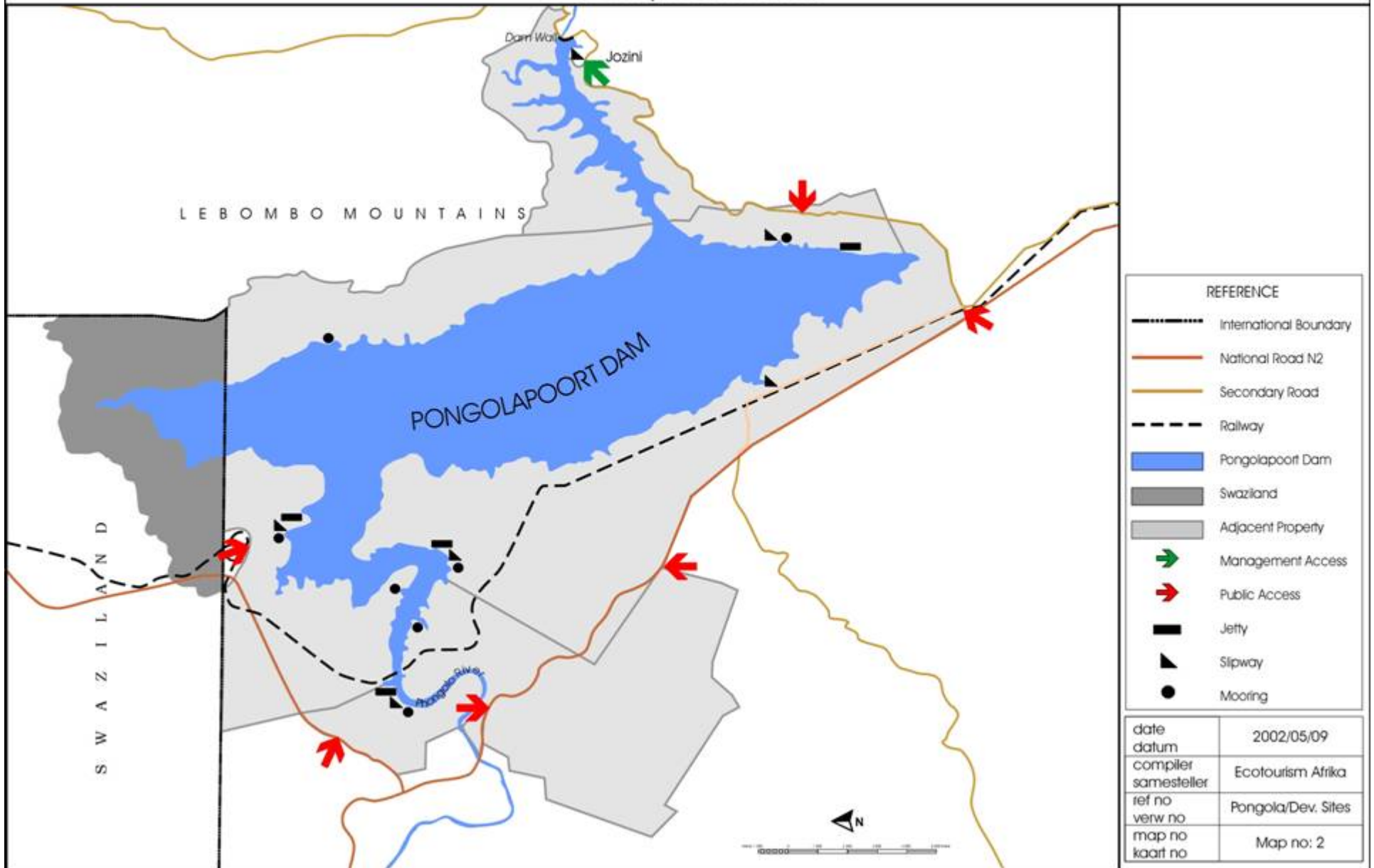
PONGOLAPOORT DAM General Zonation



REFERENCE	
	International Boundary
	Property Boundary
	National Road N2
	Secondary Road
	Railway
	Security Zone
	Public Use Zone (Unrestricted speed)
	Public Use Zone (Restricted speed)
	Limited Use Zone
	Conservation Zone - Land
	Conservation Zone - Water
	Swaziland

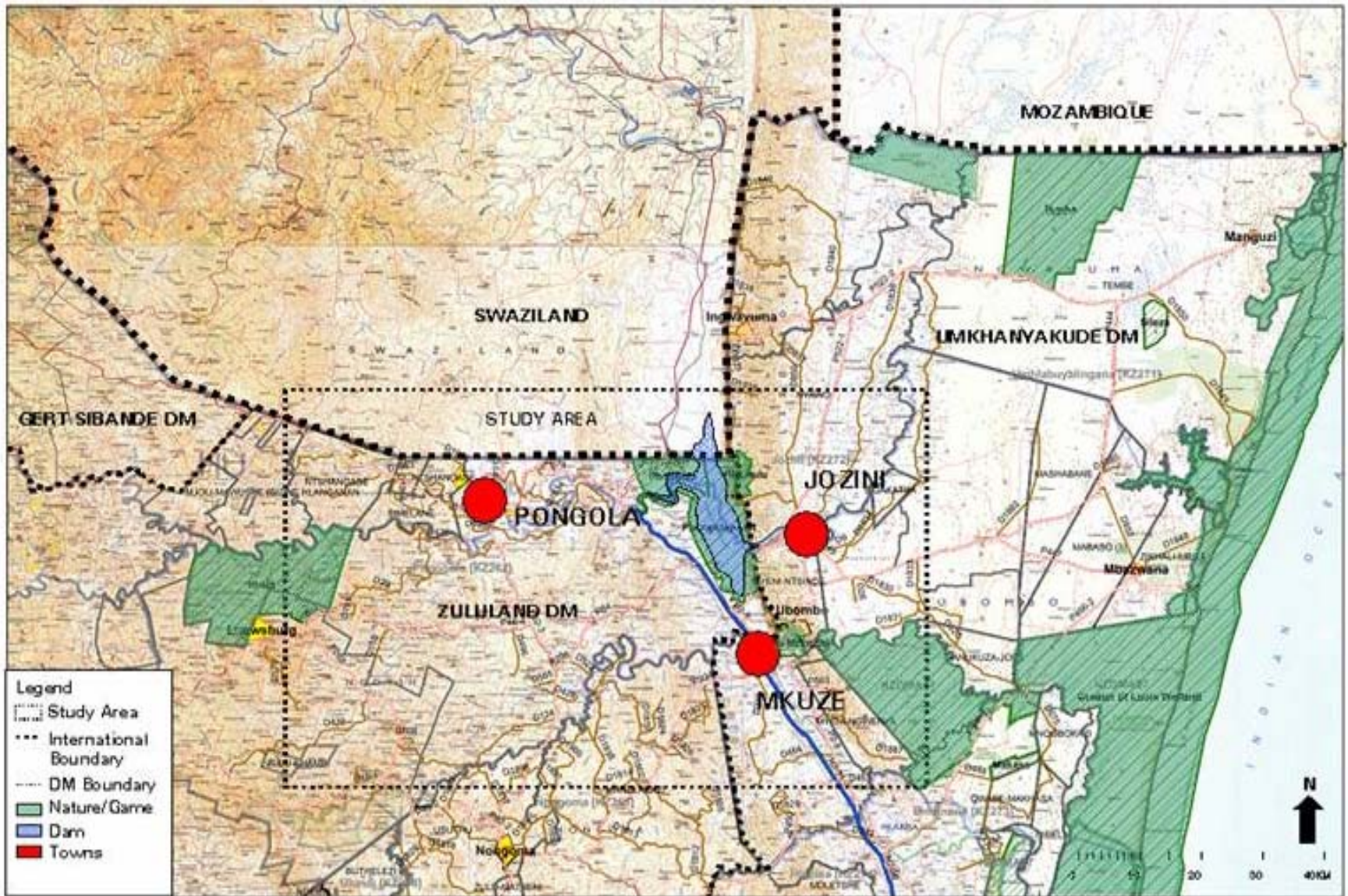
date datum	2002/05/09
compiler samesteller	Ecotourism Afrika
ref no	Pongola/Zonation
verw no	
map no	
kaart no	Map no: 1

PONGOLAPOORT DAM Development Sites

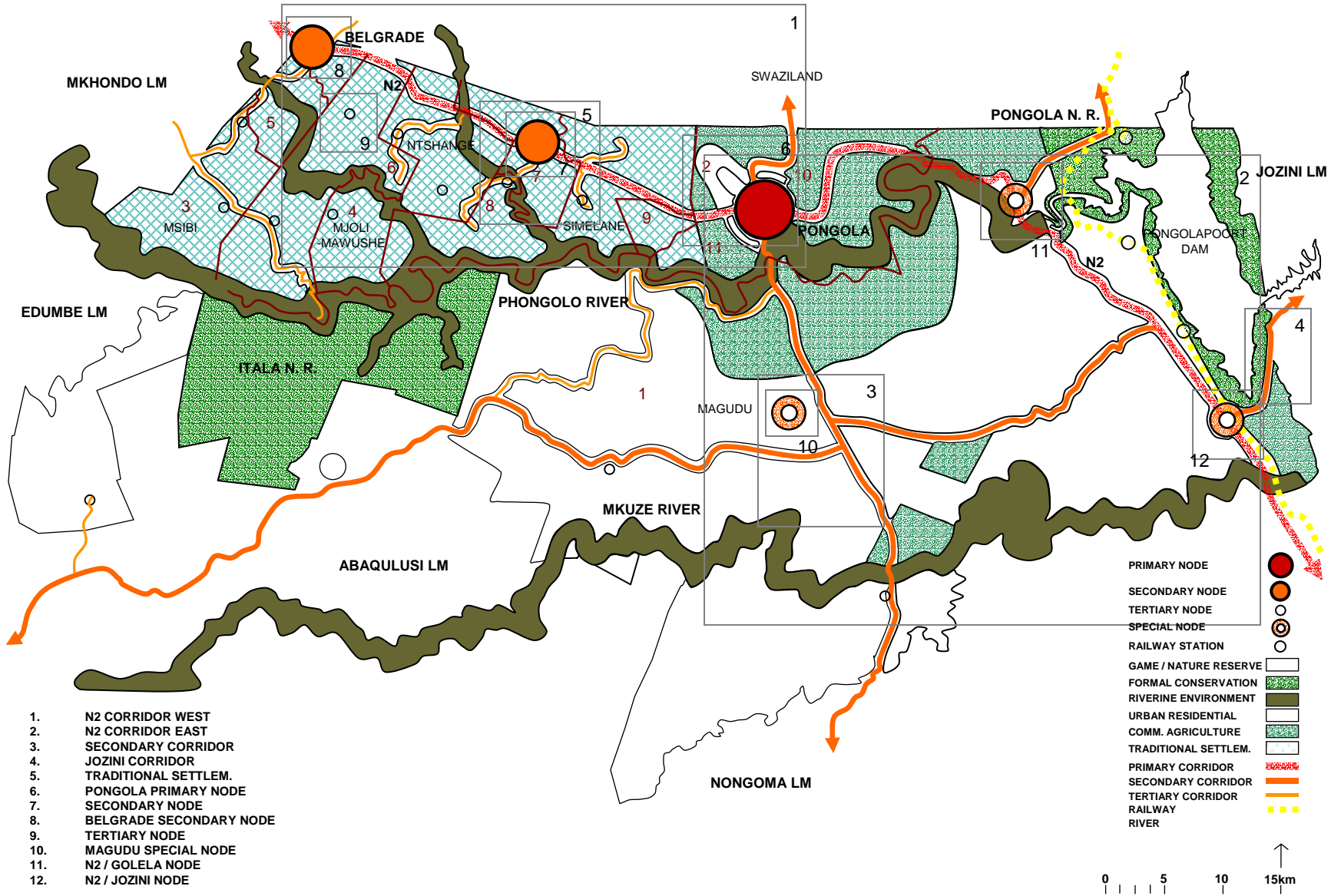


REFERENCE	
	International Boundary
	National Road N2
	Secondary Road
	Railway
	Pongolapoort Dam
	Swaziland
	Adjacent Property
	Management Access
	Public Access
	Jetty
	Slipway
	Mooring

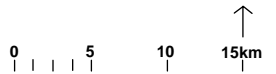
date datum	2002/05/09
compiler samesteller	Ecotourism Afrika
ref no verw no	Pongola/Dev. Sites
map no kaart no	Map no: 2



UPHONGOLO MUNICIPALITY SDF (AS IN IDP)



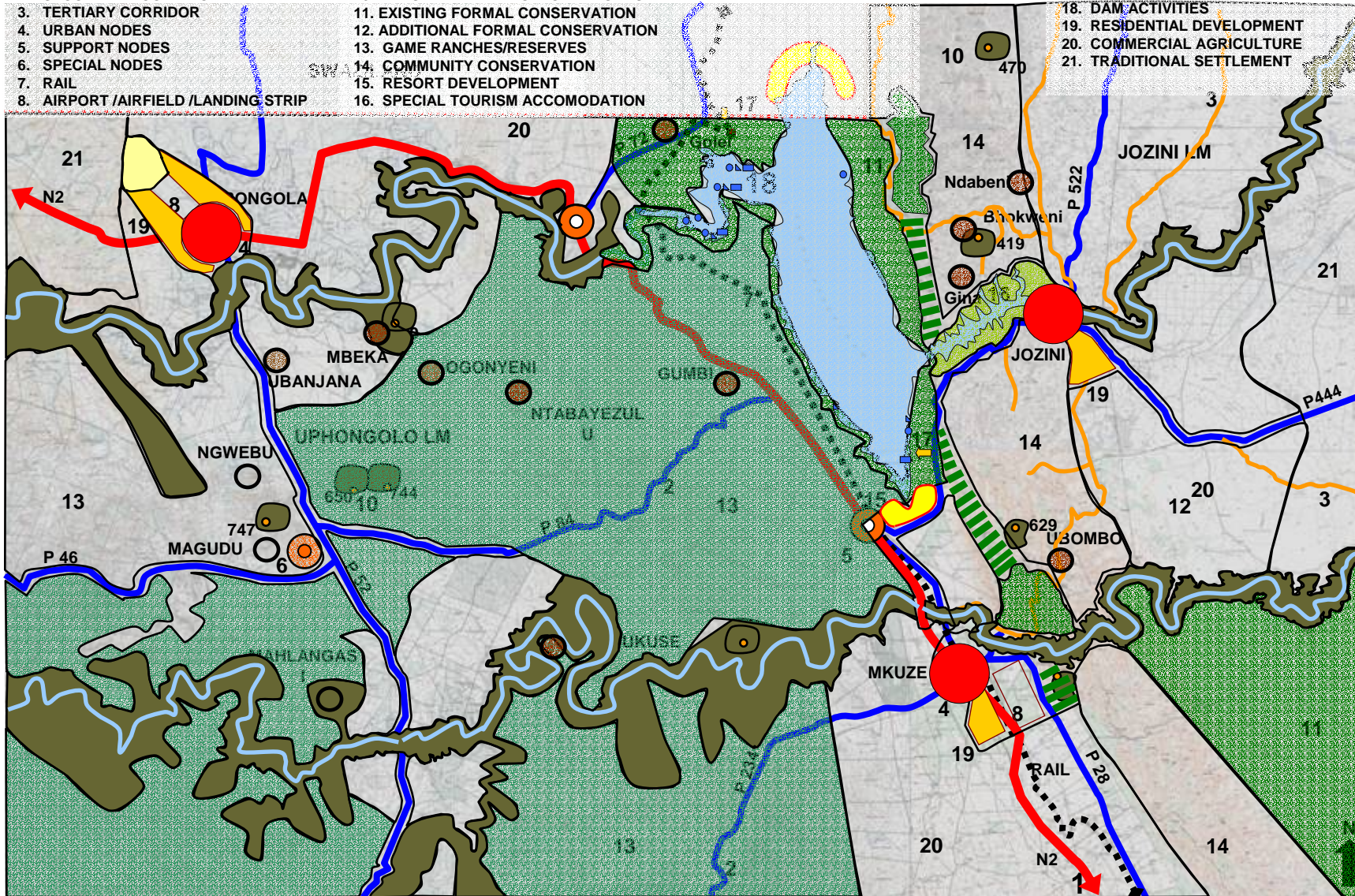
- 1. N2 CORRIDOR WEST
- 2. N2 CORRIDOR EAST
- 3. SECONDARY CORRIDOR
- 4. JOZINI CORRIDOR
- 5. TRADITIONAL SETTLEM.
- 6. PONGOLA PRIMARY NODE
- 7. SECONDARY NODE
- 8. BELGRADE SECONDARY NODE
- 9. TERTIARY NODE
- 10. MAGUDU SPECIAL NODE
- 11. N2 / GOLELA NODE
- 12. N2 / JOZINI NODE



- 1. PRIMARY CORRIDOR
- 2. SECONDARY CORRIDOR
- 3. TERTIARY CORRIDOR
- 4. URBAN NODES
- 5. SUPPORT NODES
- 6. SPECIAL NODES
- 7. RAIL
- 8. AIRPORT /AIRFIELD /LANDING STRIP

- 9. RIVERS AND ENV. PROTECTED ZONES
- 10. HILLS AND ENV. PROTECTED ZONES
- 11. EXISTING FORMAL CONSERVATION
- 12. ADDITIONAL FORMAL CONSERVATION
- 13. GAME RANCHES/RESERVES
- 14. COMMUNITY CONSERVATION
- 15. RESORT DEVELOPMENT
- 16. SPECIAL TOURISM ACCOMODATION

- 17. DAM ACCESS AND SUPPORT
- 18. DAM ACTIVITIES
- 19. RESIDENTIAL DEVELOPMENT
- 20. COMMERCIAL AGRICULTURE
- 21. TRADITIONAL SETTLEMENT



THE SPATIAL DEVELOPMENT FRAMEWORK

KPA 3: BENEFIT FLOW MANAGEMENT



BENEFITS

=

LOBS FURTHER THAN JUST EMPLOYMENT

- Redress past imbalances, wider benefits (NWA)
- Research
- Utilisation
- Access
- Investments
- Etc.

KPA 3: BENEFIT FLOW MANAGEMENT



COMPONENTS

- Communication
- Accountability
- Etc.

KPA 3: BENEFIT FLOW MANAGEMENT



THE PONGOLAPOORT DAM SUP AS A CASE STUDY

Vision for benefit flow management:

Since the Pongolapoort Dam should have a significant positive impact on the neighbouring community, it is the vision of the management team that benefits emanating from the utilisation of the dam and surrounding land should flow into the host community and neighbouring community in an equitable manner.

KPA 3: BENEFIT FLOW MANAGEMENT



THE PONGOLAPOORT DAM SUP AS A CASE STUDY

Objectives for benefit flow management:

Primary Objectives:

The primary objective is to establish an institution consisting of representatives from the neighbouring community, the management team and selected external persons to oversee the benefit flow from the Pongolapoort Dam.

Secondary Objectives:

The secondary objective is to illustrate and highlight the benefits of integrated conservation planning, management and utilisation to the neighbouring community, and to create a mechanism for their equitable participation.

Tertiary Objectives:

The tertiary objective is to stimulate conservation and tourism related projects and activities within the neighbouring community through the training, capacitation and empowerment of individuals with proven interest and entrepreneurial skills.

KPA 3: BENEFIT FLOW MANAGEMENT



THE PONGOLAPOORT DAM SUP AS A CASE STUDY

Operational Guidelines for Benefit Flow Management:

- Institutional Body
- Neighbour Relations
- Communication
- Awareness Groups
- Database