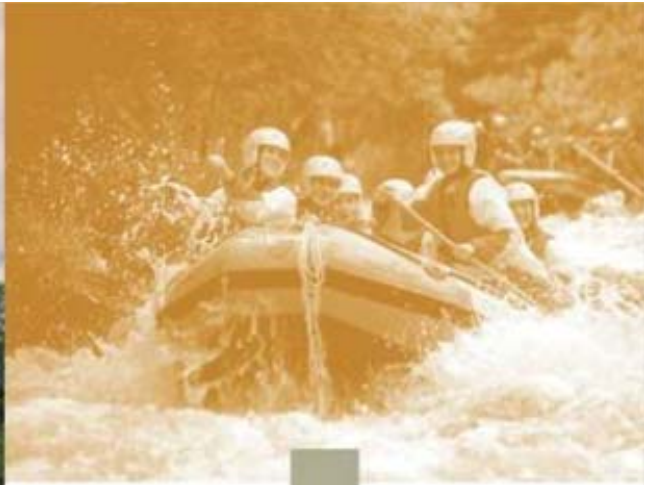


# Role of a Resource Management Plans



**water & forestry**

Department:  
Water Affairs & Forestry  
REPUBLIC OF SOUTH AFRICA



# THE ROLE OF A RMP



## **OBJECTIVES:** (NWA)

- Meeting the basic human needs of present and future generations;
- Promoting equitable access to water;
- Redressing the results of past racial and gender discrimination;
- Promoting the efficient, sustainable and beneficial use of water in the public interest;
- Facilitating social and economic development;
- Providing for growing demand for water use;
- Protecting aquatic and associated ecosystems and their biological diversity;
- Reducing and preventing pollution and degradation of water resources;
- Meeting international obligations;
- Promoting dam and public safety; and
- Establishing representative institutions.

# THE ROLE OF A RMP



## POLICY STATEMENT

It is DWAF's policy that water and associated resources are conserved and utilised in an environmentally sound and equitable manner based on integrated Resource Management Plans and a classification system developed in association with all stakeholders.

# THE ROLE OF A RMP



## WATER RESOURCES

- Government waterworks
- Other water resources
- Includes a watercourse, surface water, estuary or aquifer

# THE ROLE OF A RMP



## SPECIFIC WATER RESOURCES

Definition of a water course:

- A river or spring
- A natural channel in which water flows regularly or intermittently
- A wetland, lake or dam from which water flows; and
- Any collection of water by which the Minister, by notice in a Gazette declares a dam

# THE ROLE OF A RMP



## SPECIFIC WATER RESOURCES

Definition of a wetland

- Land which is transitional between terrestrial and aquatic where the water table is usually at or near the surface
- Land which supports any vegetation which thrives in saturated soils

# THE ROLE OF A RMP



## SPECIFIC WATER RESOURCES

Definition of a Aquifer

- Geological formation which has the necessary texture and composition to hold water or allow appreciable water movement through them.

# THE ROLE OF A RMP



## SPECIFIC WATER RESOURCES

Definition of an estuary:

- A partially or fully enclosed body of water
- Which is open to the sea permanently or periodically
- Within which the sea water can be diluted, to an extent that is measurable



# THE ROLE OF A RMP



## AUTHORISATION POLICY STATEMENT

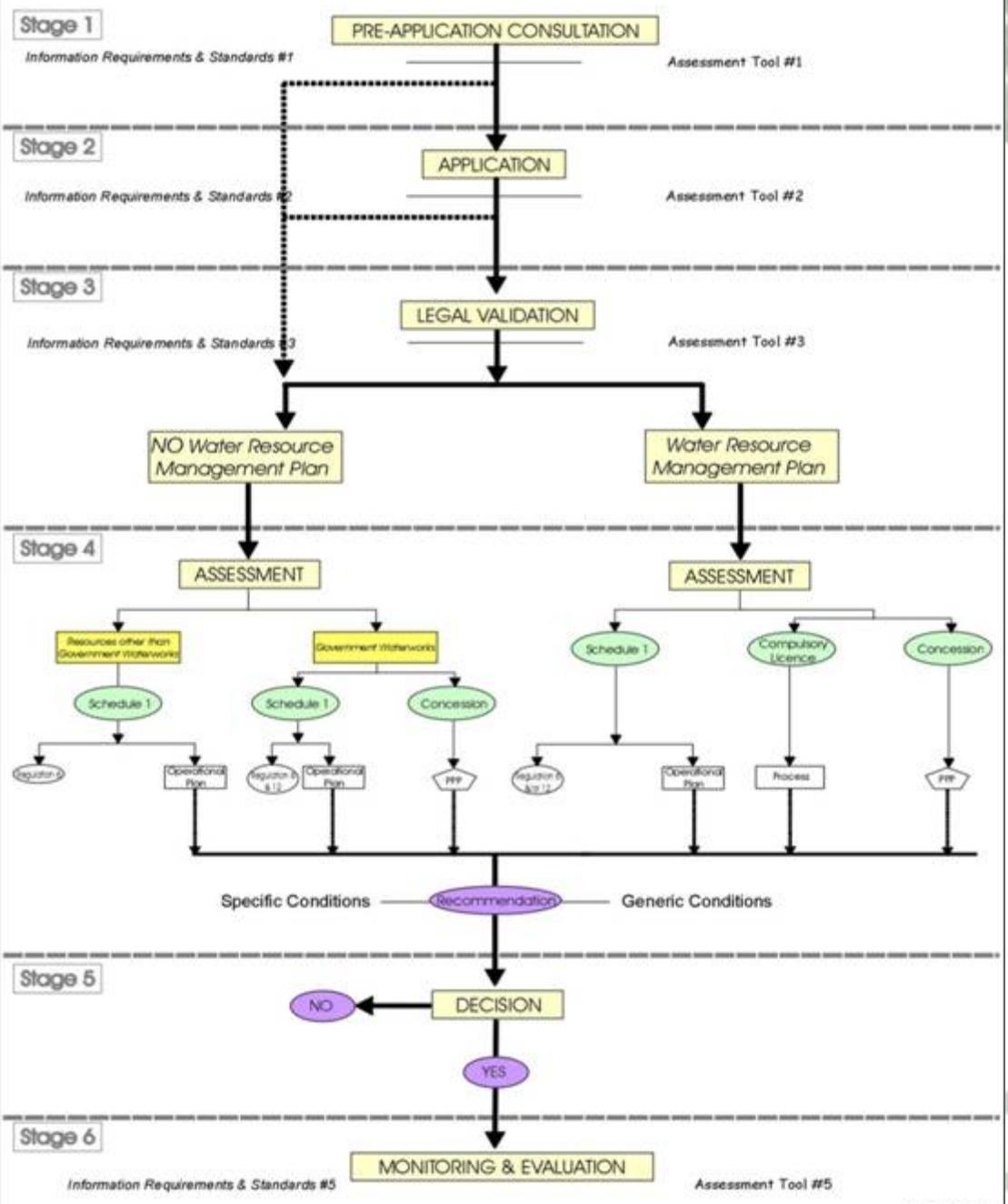
- The use of water for recreational purposes is appropriately authorised.

# THE ROLE OF A RMP



- **THE AUTHORISATION ROAD MAP**

# AUTHORISING THE USE: Procedure



# THE ROLE OF A RMP



## ACRONYMS

- SEA: Strategic Environmental Assessment
- LDO: Local Development Objectives
- MAP: Management Area Plan (Precinct plan)
- SDF: Spatial Development Framework
- PPP: Public Private Partnership

# THE ROLE OF A RMP



## BEST PRACTICE

- A Resource Management Plan=Policy at local level

# THE ROLE OF A RMP



## PPP TOOLKIT

- A strategic plan for commercialisation
- Needs
- Resource Management Plans

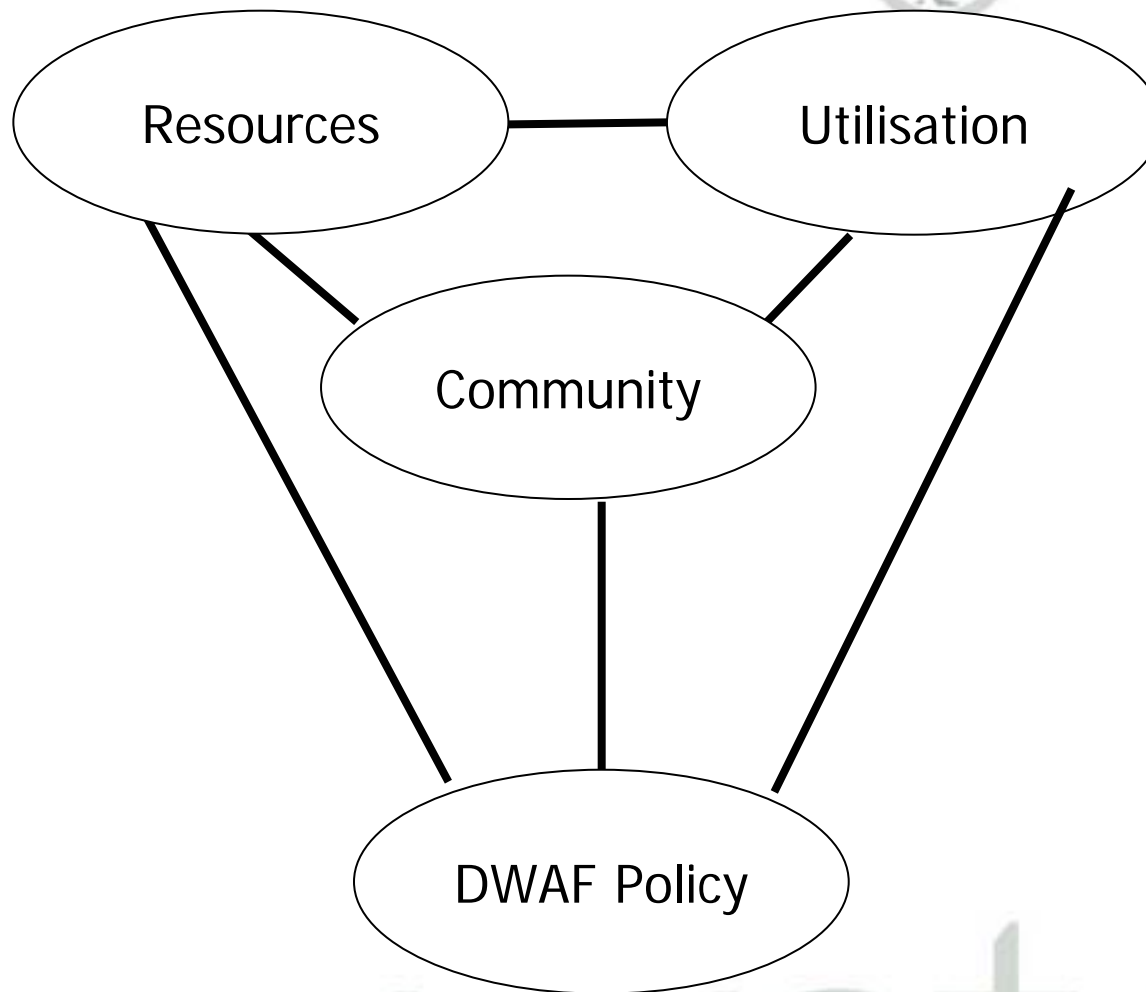
# THE ROLE OF A RMP



## ACCOUNTABILITY

- Policy as promise to.....

# THE ROLE OF A RMP





# THE ROLE OF A RMP



## **'PLANNING IS A SPECIAL FORM OF POLICY'**

- Advantages in decision making as apposed to Ad hoc approach



water & forestry

Department of  
Water and Forestry  
REPUBLIC OF SOUTH AFRICA

water