

DEPARTMENT OF WATER AFFAIRS AND FORESTRY
DIRECTORATE NATIONAL WATER RESOURCE PLANNING

Eastern Cape : Mzimvubu River Basin Water Utilization Options

EASTERN CAPE TOPOGRAPHY AND WATER MANAGEMENT AREAS

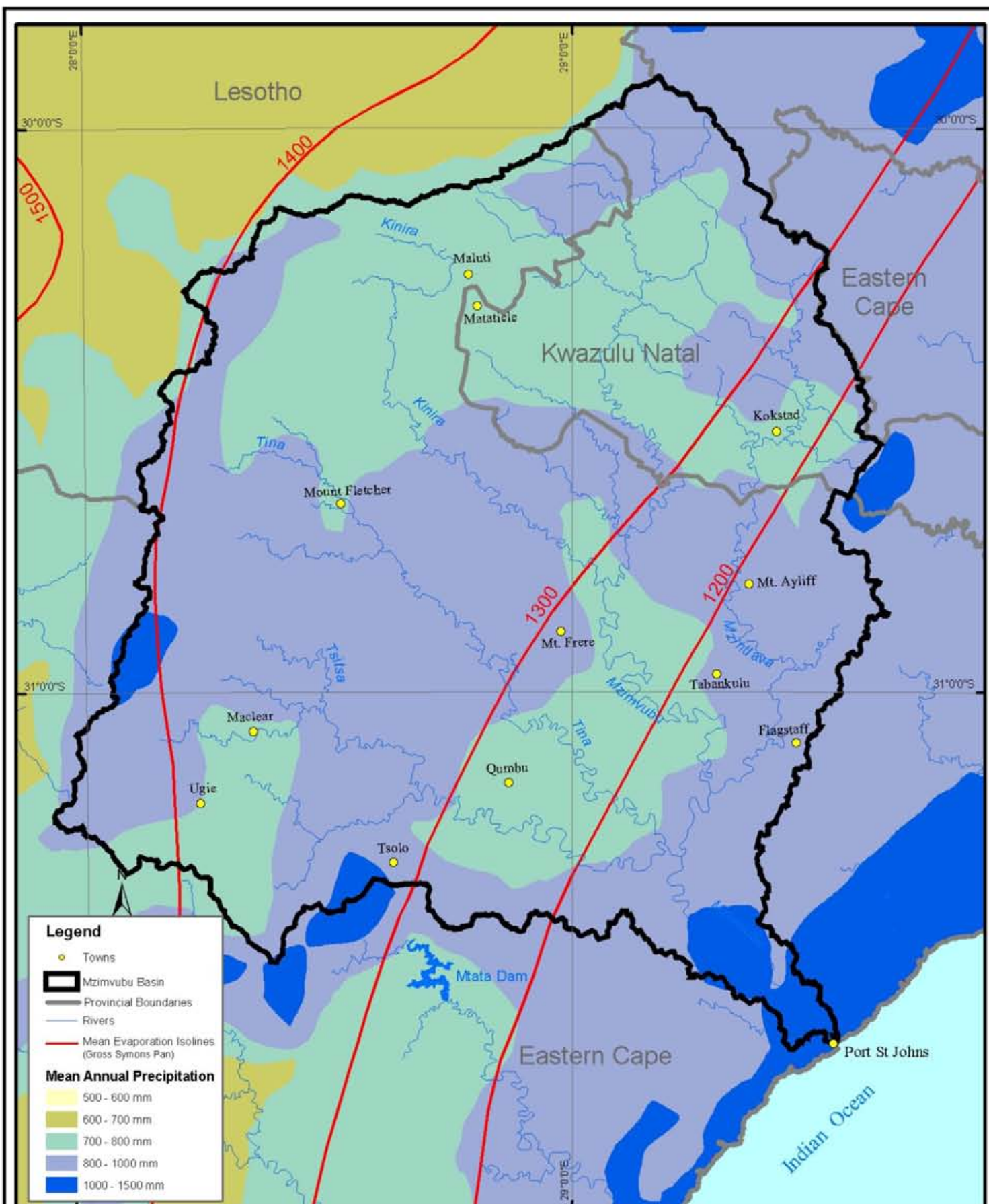
Projection: **Albers Projection**

Central Meridian: 26.5
1st Std Parallel: -30
2nd Std Parallel: -34
Latitude of Origin: 0

Scale:

0 10 20 40 60 Kilometers
1 : 3 000 000

**Figure
1**



Legend

- Towns
- Mzimvubu Basin
- Provincial Boundaries
- Rivers
- Mean Evaporation Isolines (Gross Symons Pan)

Mean Annual Precipitation

- 500 - 600 mm
- 600 - 700 mm
- 700 - 800 mm
- 800 - 1000 mm
- 1000 - 1500 mm



DEPARTMENT OF WATER AFFAIRS AND FORESTRY
DIRECTORATE NATIONAL WATER RESOURCE PLANNING

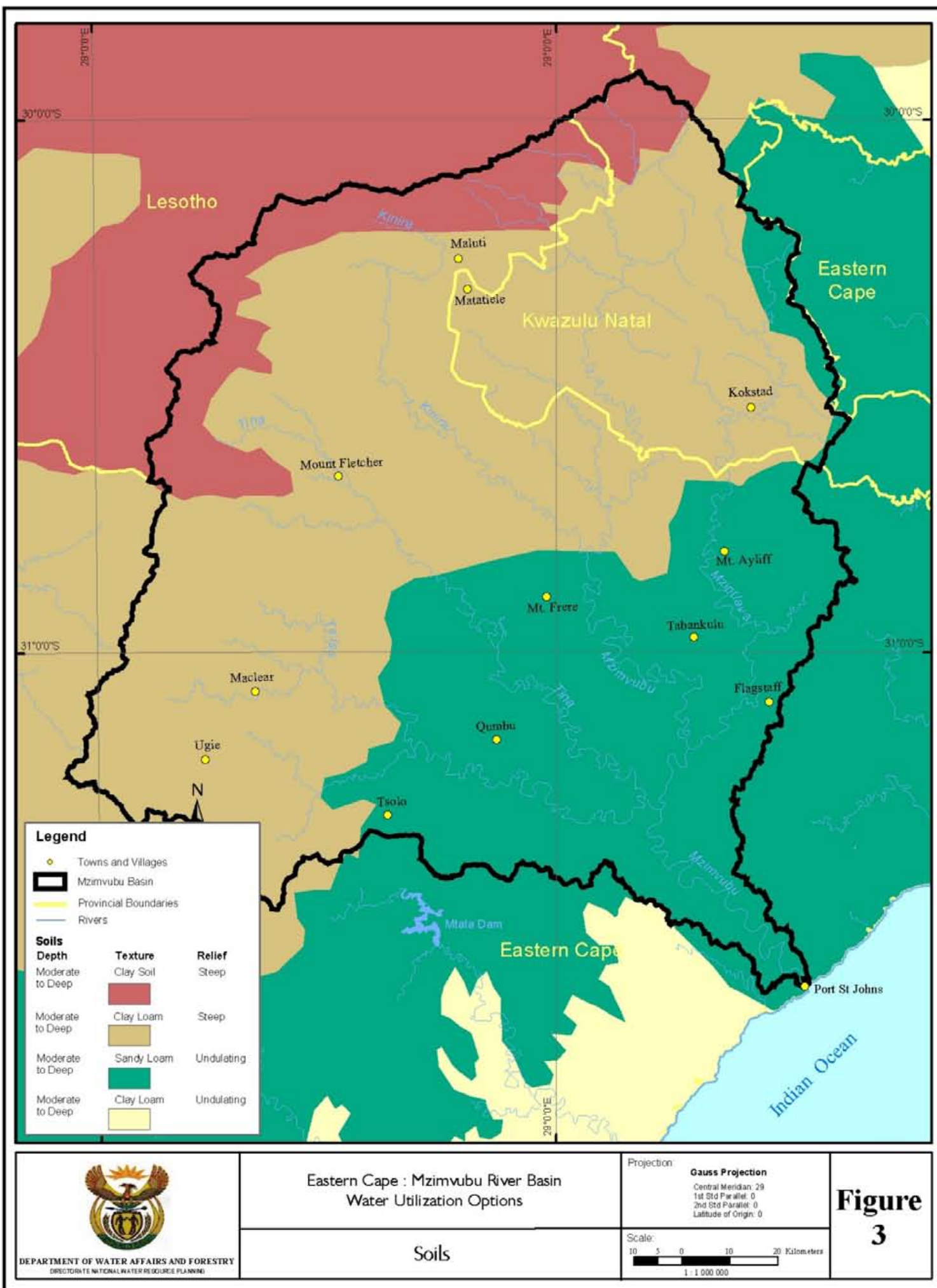
Eastern Cape : Mzimvubu River Basin Water Utilization Options

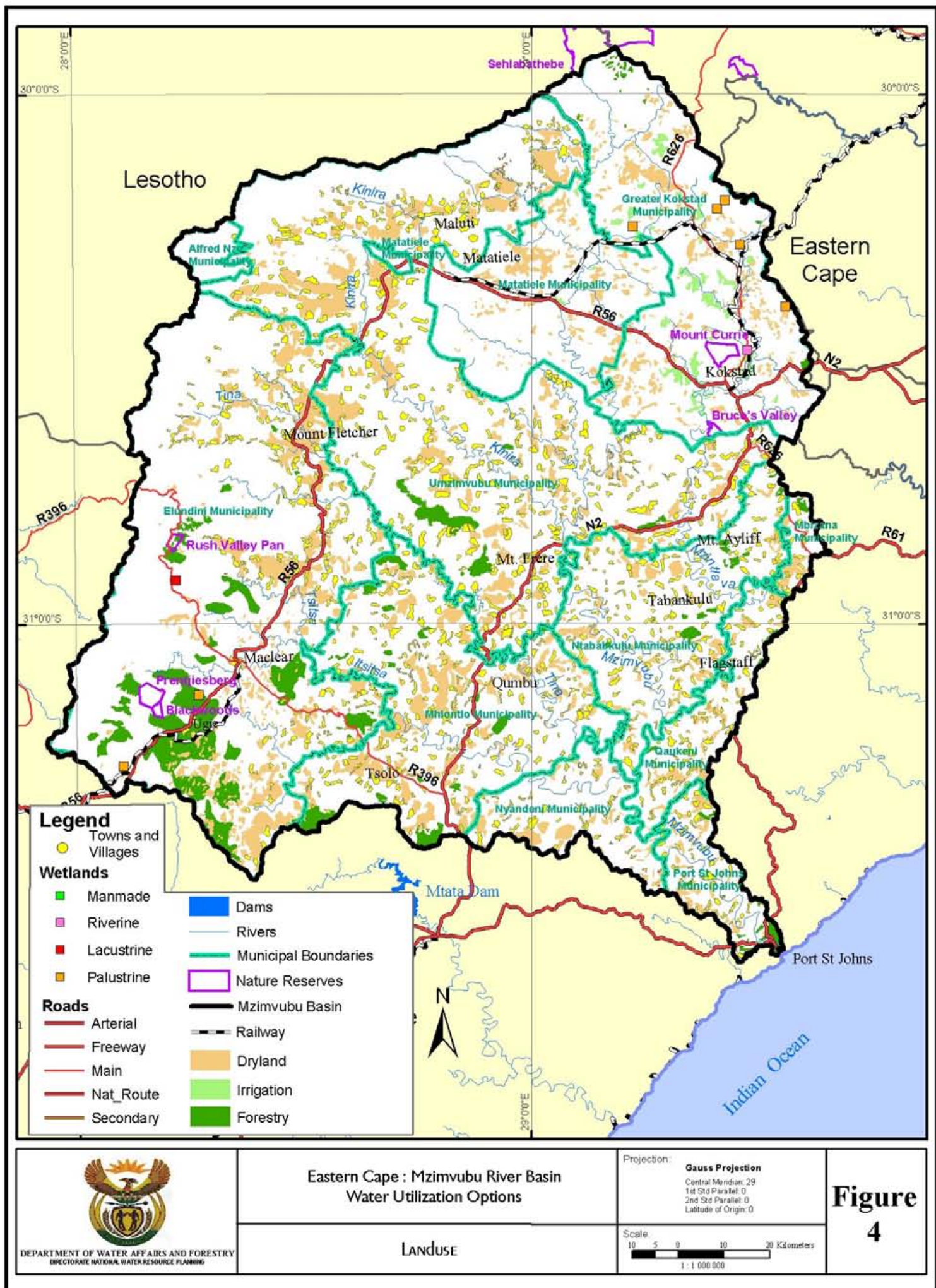
MEAN ANNUAL PRECIPITATION AND EVAPORATION

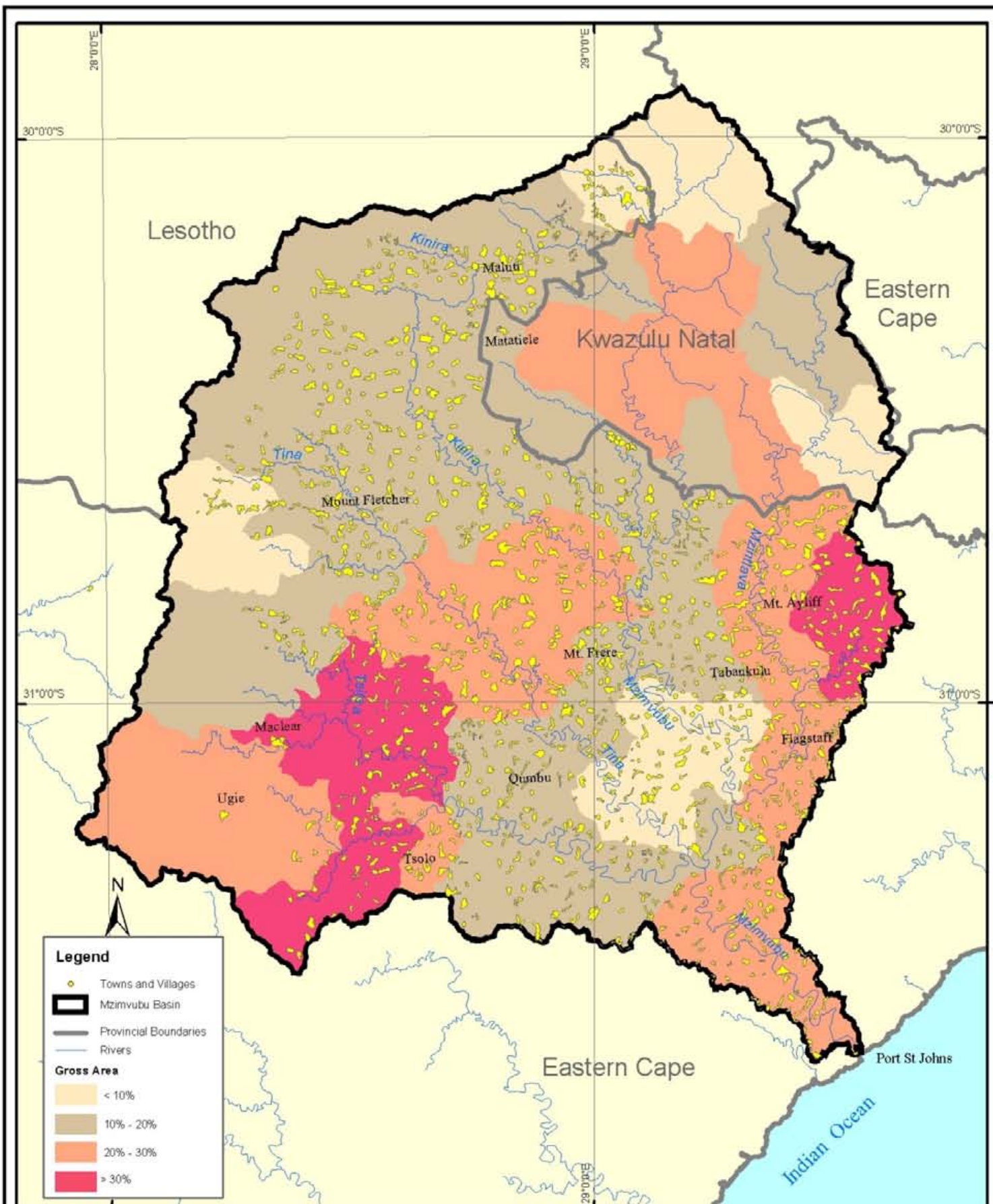
Projection: **Gauss Projection**
Central Meridian: 29
1st Std Parallel: 0
2nd Std Parallel: 0
Latitude of Origin: 0

Scale: 10 5 0 10 20 Kilometers
1 : 1 000 000

**Figure
2**







DEPARTMENT OF WATER AFFAIRS AND FORESTRY
DIRECTORATE NATIONAL WATER RESOURCE PLANNING

Eastern Cape : Mzimvubu River Basin
Water Utilization Options

FORESTRY POTENTIAL

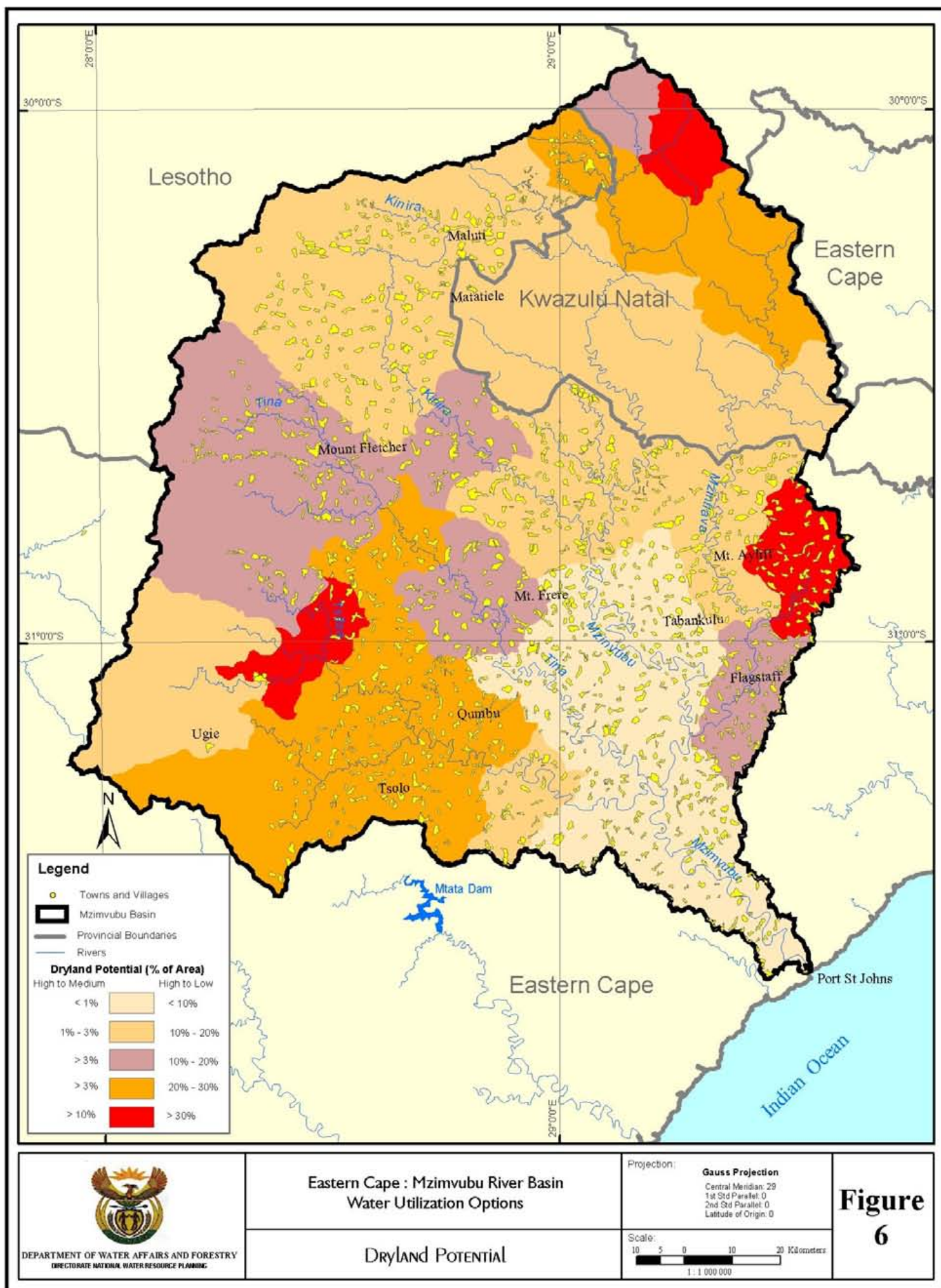
Projection: **Gauss Projection**

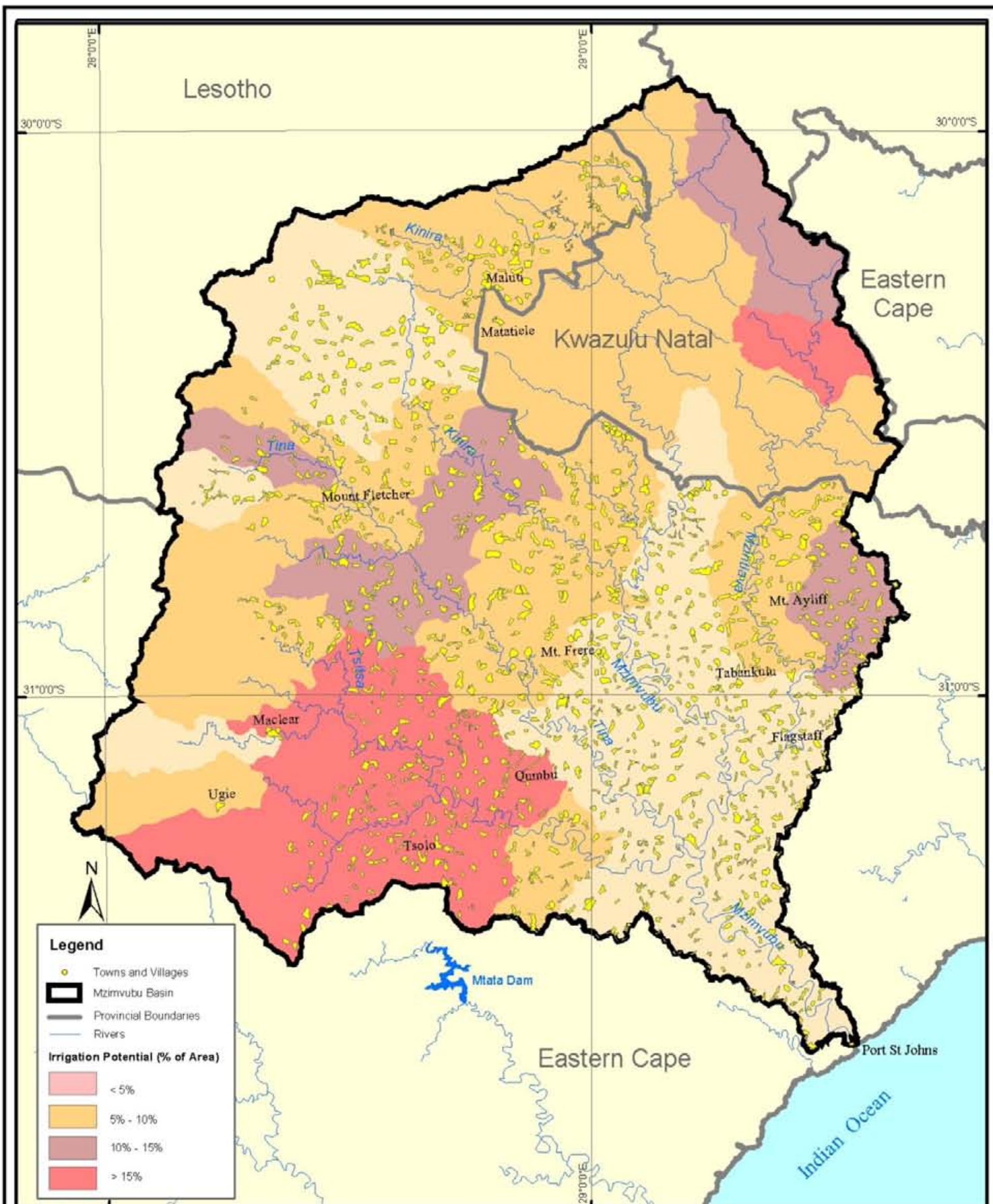
Central Meridian: 29
1st Std Parallel: 0
2nd Std Parallel: 0
Latitude of Origin: 0

Scale: 10 5 0 10 20 Kilometers

1 : 1 000 000

**Figure
5**





DEPARTMENT OF WATER AFFAIRS AND FORESTRY
DIRECTORATE NATIONAL WATER RESOURCE PLANNING

Eastern Cape : Mzimvubu River Basin Water Utilization Options

IRRIGATION POTENTIAL

Projection:

Gauss Projection

Central Meridian: 29
1st Std Parallel: 0
2nd Std Parallel: 0
Latitude of Origin: 0

Scale:

10 5 0 10 20 Kilometers

1 : 1 000 000

Figure
7



DEPARTMENT OF WATER AFFAIRS AND FORESTRY
DIRECTORATE NATIONAL WATER RESOURCE PLANNING

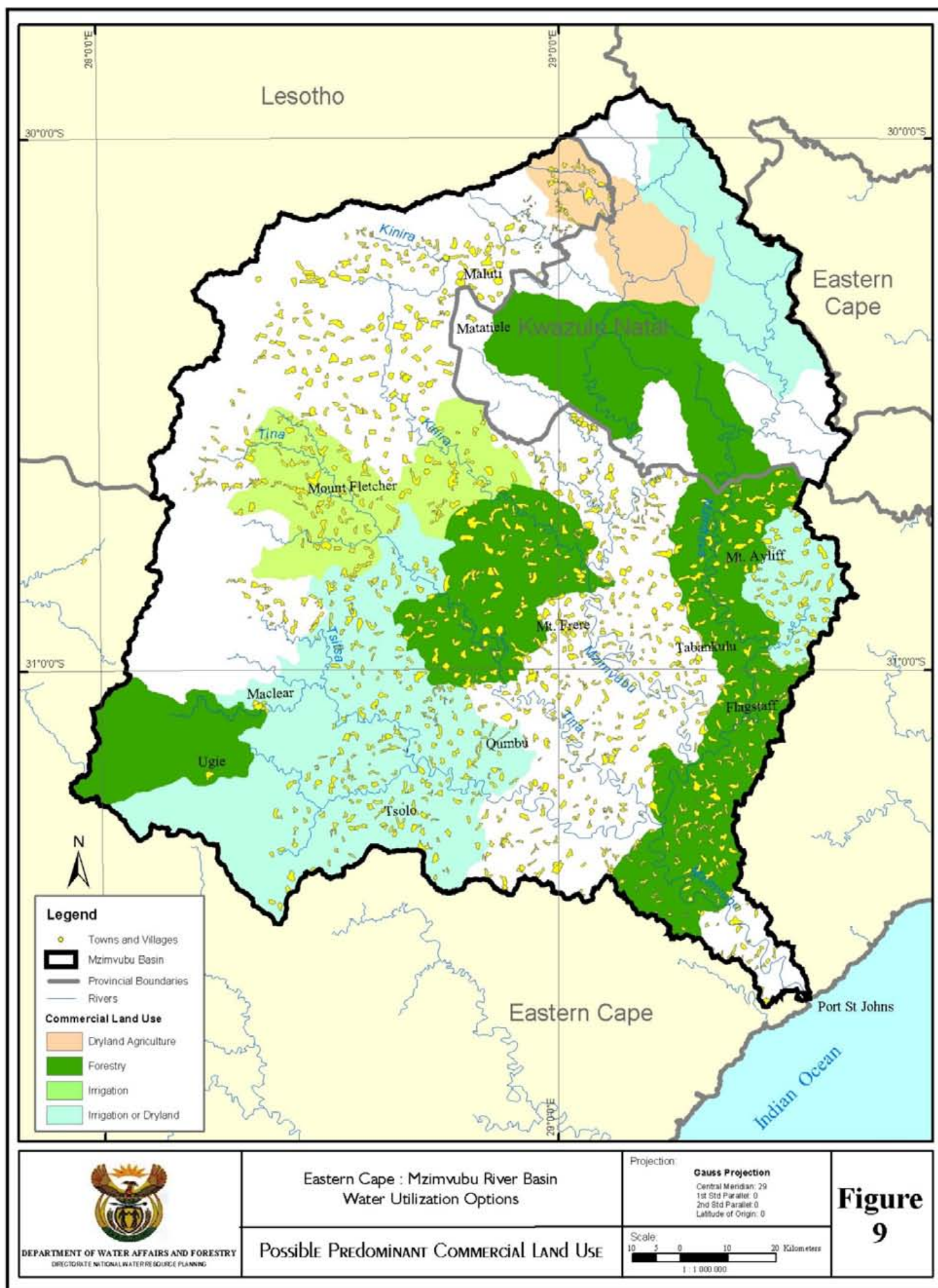
Eastern Cape : Mzimvubu River Basin
Water Utilization Options

Hydropower Possibilities

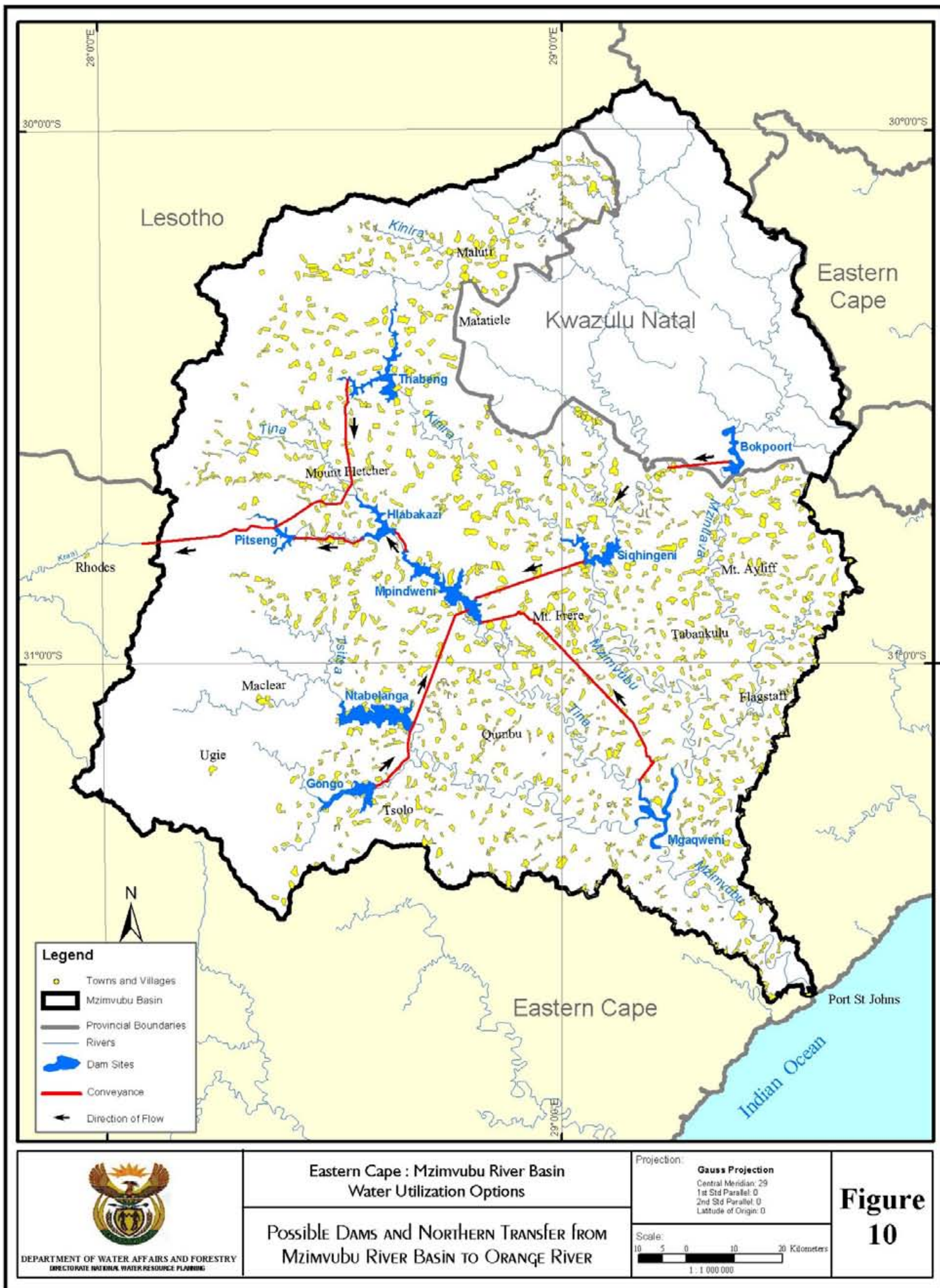
Projection: Gauss Projection
Central Meridian: 29
1st Std Parallel: 0
2nd Std Parallel: 0
Latitude of Origin: 0

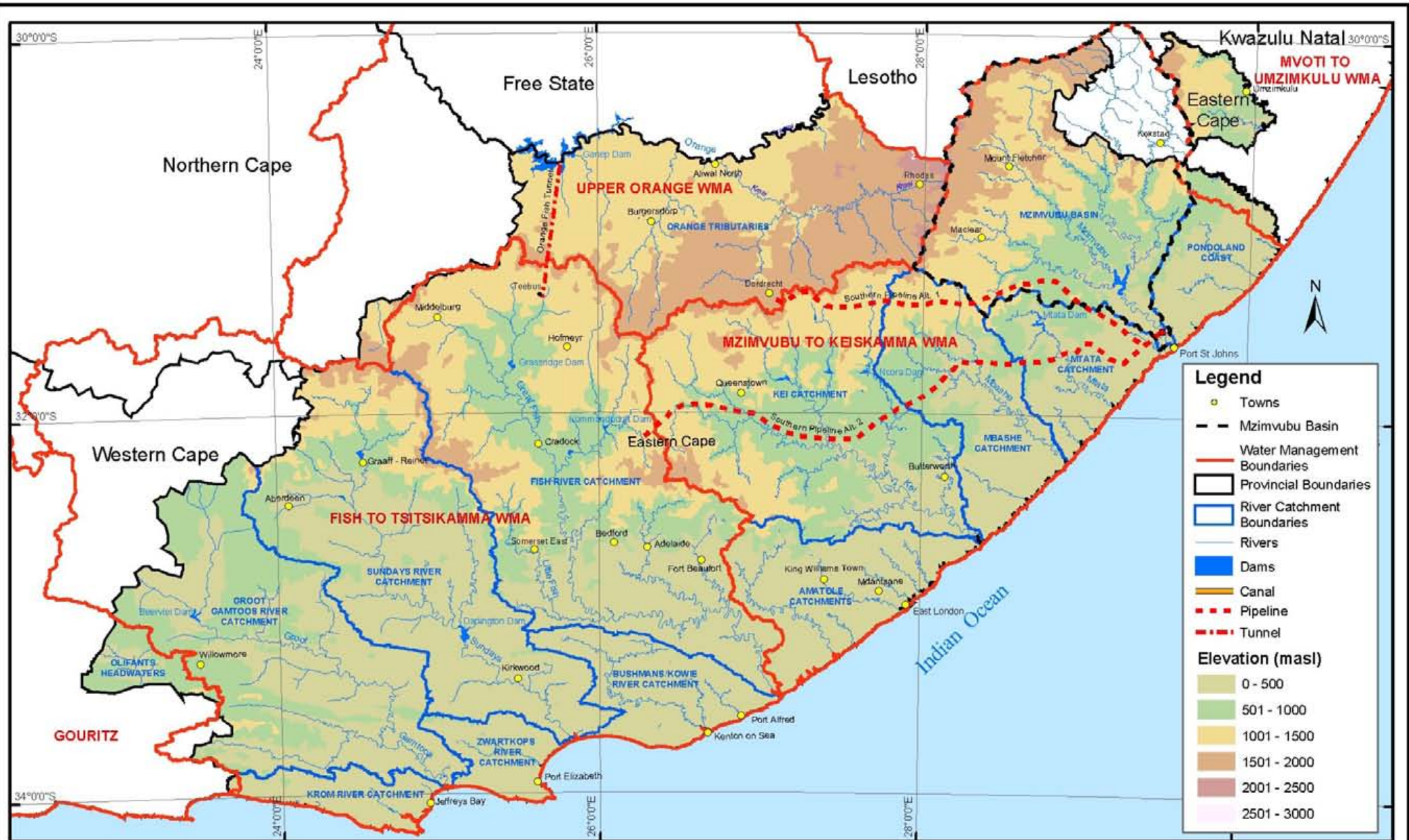
Scale: 10 5 0 10 20 Kilometers
1 : 1 000 000

**Figure
8**



**Figure
9**





DEPARTMENT OF WATER AFFAIRS AND FORESTRY
DIRECTORATE NATURAL WATER RESOURCES PLANNING

Eastern Cape : Mzimvubu River Basin Water Utilization Options

SOUTHERN PIPED TRANSFER FROM MZIMVUBU RIVER TO FISH AND ORANGE RIVERS

Projection: **Albers Projection**

Central Meridian: 26.5
1st Std Parallel: -30
2nd Std Parallel: -34
Latitude of Origin: 0

Scale
0 10 20 40 60 Kilometers
1 : 3 000 000

**Figure
11**



DEPARTMENT OF WATER AFFAIRS AND FORESTRY
DIRECTORATE NATIONAL WATER RESOURCE PLANNING

Eastern Cape : Mzimvubu River Basin Water Utilization Options

SOUTHERN CANAL TRANSFER FROM MZIMVUBU RIVER TO FISH AND SUNDAYS RIVERS

Projection: **Albers Projection**

Central Meridian: 26.5
1st Std Parallel: -30
2nd Std Parallel: -34
Latitude of Origin: 0

Scale
0 10 20 40 60 Kilometers
1 : 3 000 000

**Figure
12**