

Status of Groundwater Level Trends

30 January 2015 to 30 January 2016

Description:

The map indicates the change in groundwater levels for the period between January 2015 and January 2016. The increase of water levels is indicated in blue points. Green indicates stable (unchanged) water levels and the decrease of water levels is indicated in orange and red points.

LEGEND

- RSA Groundwater Dependant Towns 2013
- ⊙ Major RSA Cities
- ▲ Major RSA Dams
- Major RSA Rivers
- RSA Rainfall Regions (A = Winter; B = Year Round; C = Summer)
- International Boundary

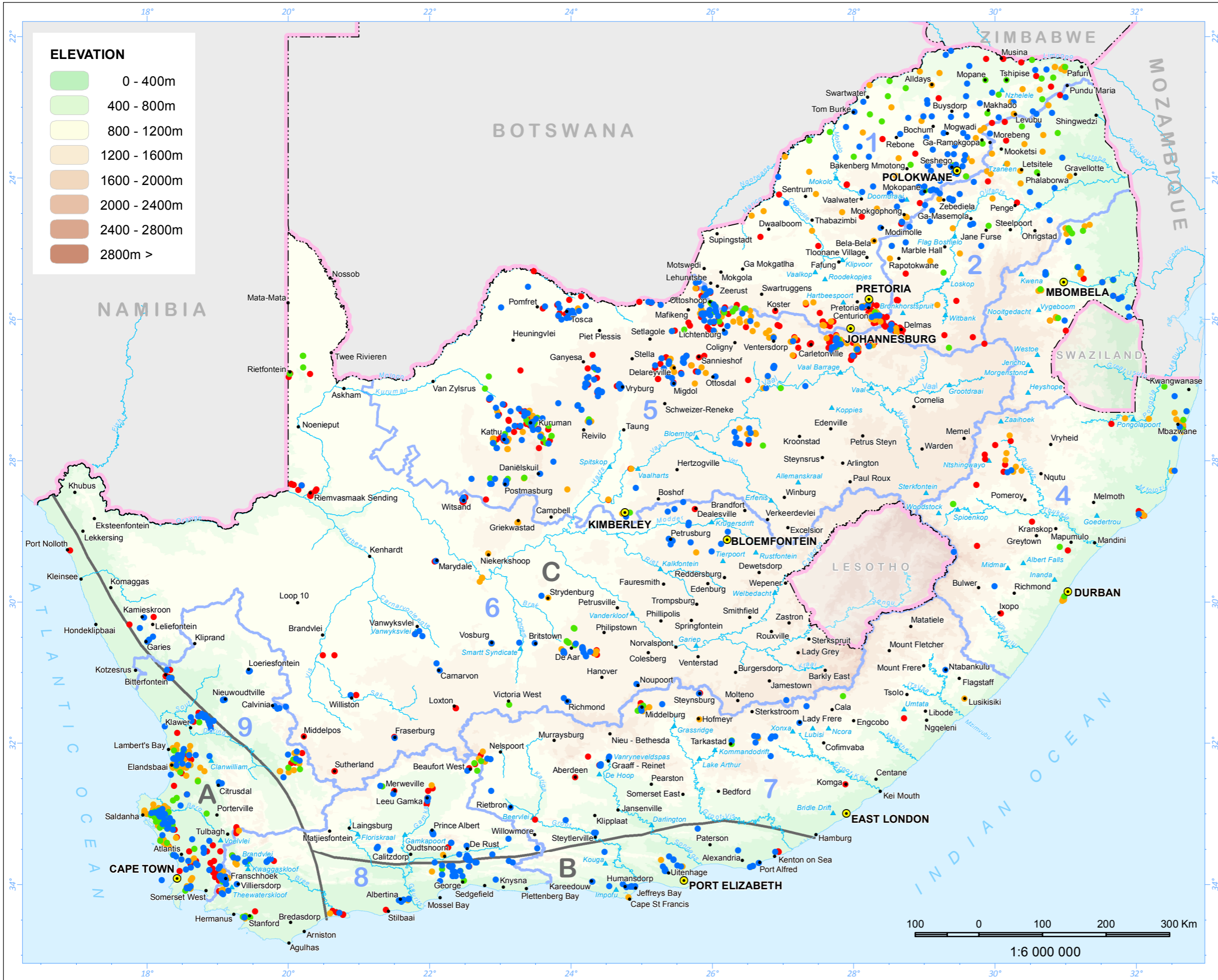
Change in Groundwater (GW) Levels [m]

- GW Level Increase > 0.1
- GW Level Stable: -0.1 to 0.1
- GW Level Decrease: > -0.1 to -1.0
- GW Level Decrease: > -1.0

Water Management Areas

— 2012 Water Management Areas Boundary

- 1 Limpopo
- 2 Olifants
- 3 Inkomati-Usuthu
- 4 Pongola-Mtamvuna
- 5 Vaal
- 6 Orange
- 7 Mzimvubu-Tsitsikamma
- 8 Breede-Gouritz
- 9 Berg-Olifants



Task No: GM16_249