

# Water Use Charges for Government Water Schemes and Water Resource Management Charges

2 0 0 3 / 2 0 0 4

Eastern Cape Region



Department: Water Affairs and Forestry

**Your partner in building  
a better life for all**

[www.dwaf.gov.za](http://www.dwaf.gov.za)

**PROUDLY  
SOUTH AFRICAN**



# Purpose of this document

This document provides you with an alphabetical list, per region, of water use charges for Government Water Schemes or the irrigation districts as well as the latest Water Resource Management charges. The Department of Water Affairs and Forestry review these charges annually. This document lists the new prices for charges for the 2003/2004 financial year, with effect from 1 April 2003.

## Summary of sectoral Water Resource Management Charges per Water Management Area

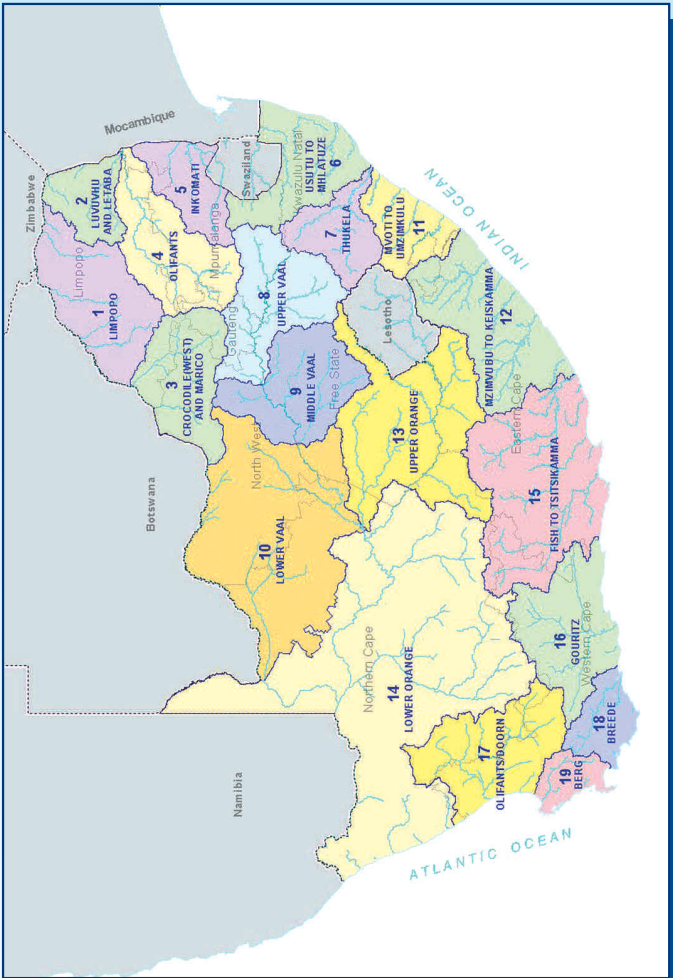
WATER MANAGEMENT AREA		SECTORAL UNIT COST IN C/M <sup>3</sup>		
No	Water Management Area	Domestic/ Industrial	Agriculture: Irrigation and watering livestock	Forestry
1	LIMPOPO	0.92	0.58	0.54
2	LUVUVHU AND LETABA	1.33	0.78	0.70
3	CROCODILE (WEST) AND MARICO	0.82	0.63	0.61
4	OLIFANTS	0.89	0.75	0.70
5	INKOMATI	0.85	0.63	0.57
6	USUTU TO MHLATHUZE	0.30	0.30	0.28
7	THUKELA	0.33	0.33	0.31
8	UPPER VAAL	0.96	0.78	0.78
9	MIDDLE VAAL	1.07	1.07	N/A
10	LOWER VAAL	0.59	0.50	N/A
11	MVOTI TO UMZIMKULU	0.81	0.78	0.74
12	MZIMVUBU TO KEISKAMMA	0.85	0.67	0.56
13	UPPER ORANGE	0.38	0.38	N/A
14	LOWER ORANGE	0.49	0.40	N/A
15	FISH TO TSITSIKAMMA	0.89	0.50	0.27
16	GOURITZ	2.36	0.67	0.47
17	OLIFANTS / DOORN	1.77	0.65	0.51
18	BREEDE	2.23	0.58	0.39
19	BERG	3.16	0.70	0.54
	<b>Average</b>	<b>1.11</b>	<b>0.61</b>	<b>0.42</b>

ALL CHARGES EXCLUDE VAT

C/M<sup>3</sup> (cent per cubic metre)



# Map of the Water Management Areas and provincial borders



## How to convert cents per m<sup>3</sup> to Rand per hectare

The charges listed in the table for irrigation purposes are provided in cents per m<sup>3</sup>. Should you wish to convert it to Rand per hectare, please follow the instructions below:

Take the total tariff in cent per m<sup>3</sup> and divide it by 100. Take the answer and multiply it with the m<sup>3</sup> quota per hectare to get to the Rand per hectare amount. *For example see next page:*



## For example:

O & M: 2.70 cent per m<sup>3</sup> / 100 = R 0.027 per m<sup>3</sup>  
Depreciation: 1.00 cent per m<sup>3</sup> / 100 = R 0.01 per m<sup>3</sup>  
Total Tariff: 3.70 cent per m<sup>3</sup> /100 = R 0.037 per m<sup>3</sup>

Total tariff R 0.037 per m<sup>3</sup> x 3 000 (m<sup>3</sup> quota of water per hectare)  
= R111 per hectare

## Understanding the abbreviations

<b>WMA</b>	Water Management Area A map of the Water Management Areas is printed in this document for easy identification.
<b>m<sup>3</sup></b>	Cubic metre
<b>Ha</b>	Hectare
<b>O &amp; M</b>	Operation and Maintenance The charges for this item fund amongst other salaries of the staff involved with the maintenance work and costs involved in maintaining the schemes to ensure smooth operations.
<b>Deprec'n</b>	Depreciation Charges for this item fund the depreciation on equipment as well as the refurbishment thereof. This fund allows for the replacement of equipment to ensure operational systems.
<b>B</b>	Bi-annually
<b>A</b>	Annually
<b>TBA</b>	To be advised



WMA (refer map)	Foot Notes	Government Water Scheme Name	Scheme Management Parameter	Tariff/Charges For Irrigation Purposes			Tariff/Charges For Domestic and Industrial use
				m <sup>3</sup> Quota Per Ha	Tariff - Cent Per Cubic Metre	Billing Frequency	
12	▲	AMATOLA (WRIGGLESWADE DAM)	FROM THE CANAL				95.62
12	▲	AMATOLA (WRIGGLESWADE DAM)	FROM THE DAM				53.99
12	▲	AMATOLA (WRIGGLESWADE DAM)	FROM THE RIVER				95.62
12	●	BINFIELD PARK DAM	FROM THE SCHEME	6 100	3.46	B	60.19
12	▲	BIZANA (BIZANA DAM)	FROM THE DAM				67.40
12	▲	BIZANA (BIZANA DAM)	WATER TREATMENT WORKS				119.00
12	▲	BUSHMANSKRANTZ DAM	FROM THE SCHEME				67.40
12	▲	CORANA (CORANA DAM)	FROM THE DAM				67.40
12	▲	CORANA (CORANA DAM)	FROM THE DAM				67.40
12	▲	CORANA (CORANA DAM)	WATER TREATMENT WORKS				119.00
12	▲	DABI DAM	FROM THE DAM				67.40
12	▲	DEBE DAM	FROM THE DAM				67.40
12	●	DOORN RIVER (DOORN RIVER DAM)	FROM THE DAM	6 100	14.50	B	40.81



WMA (refer map)		Foot Notes	Government Water Scheme Name	Scheme Management Parameter	Tariff/Charges For Irrigation Purposes			Tariff/Charges For Domestic and Industrial use
					m <sup>3</sup> Quota Per Ha	Tariff - Cent Per Cubic Metre	Billing Frequency	Tariff - Cent Per Cubic Metre
15	● ■	FISH SUNDAYS RIVER	FROM DARLINGTON DAM TO KORHAANSDRIFT WEIR	9 000	3.76	B		
15	● ■	FISH SUNDAYS RIVER	FROM DE MISTKRAAL WEIR TO DARLINGTON DAM	12 500	3.65	B		
15	● ■	FISH SUNDAYS RIVER	FROM DE MISTKRAAL WEIR TO JUNCTIONDRIFT	12 500	3.30	B		
15	● ■	FISH SUNDAYS RIVER	FROM ELANDSDRIFT DAM TO HERMANUSKRAAL WEIR AND KLIPFONTEIN IRRIGATION BOARD	12 500	2.29	B		
15	● ▲ ■	FISH SUNDAYS RIVER	FROM ELANDSDRIFT WEIR TO DE MISTKRAAL WEIR	12 500	2.77	B		18.08
15	▲ ■	FISH SUNDAYS RIVER	FROM GRASS RIDGE DAM TO ELANDSDRIFT WEIR FOR INXUBA YETHEMBA MUNICIPALITY (CRADOCK)					5.91



WMA (refer map)	Foot Notes	Government Water Scheme Name	Scheme Management Parameter	Tariff/Charges For Irrigation Purposes			Tariff/Charges For Domestic and Industrial use
				m <sup>3</sup> Quota Per Ha	Tariff - Cent Per Cubic Metre	Billing Frequency	
15	● ▲ ■	FISH SUNDAYS RIVER	FROM GRASS RIDGE DAM TO ELANDSDRIFT WEIR FOR OTHER USERS	13 500	2.03	B	5.91
15	● ▲ ■	FISH SUNDAYS RIVER	FROM TEEBUS-OUTLET TO GRASS RIDGE DAM	13 500	1.97	B	5.91
15	● ▲	GAMTOOS RIVER (KOUGA AND LOERIE DAMS)	FROM THE CANAL	8 000	1.00	B	6.28
15	▲	GAMTOOS RIVER (KOUGA AND LOERIE DAMS)	FROM THE DAM				33.22
15	●	GAMTOOS RIVER (KOUGA AND LOERIE DAMS)	FROM THE RIVER		1.00	B	
15	●	GROOT RIVER (BEERVLEI DAM)	FROM THE DAM	11 900	1.35	A	
15	● ▲	KAT RIVER (KAT RIVER DAM)	FROM THE DAM	6 100	5.36	B	83.29
12	●	KEISKAMMAHOEK (CATA DAM)	FROM THE SCHEME	6 100	6.08	B	
12	● ▲	KEISKAMMAHOEK (MNYAMENI DAM)	FROM THE SCHEME	6 100	5.86	B	67.40
12	●	KLIPPLAAT RIVER (WATERDOWN DAM)	FROM THE CANAL	6 100	3.33	B	
12	● ▲	KLIPPLAAT RIVER (WATERDOWN DAM)	FROM THE DAM	6 100	3.33	B	10.54



WMA (refer map)	Foot Notes	Government Water Scheme Name	Scheme Management Parameter	Tariff/Charges For Irrigation Purposes			Tariff/Charges For Domestic and Industrial use
				m <sup>3</sup> Quota Per Ha	Tariff - Cent Per Cubic Metre	Billing Frequency	
12	▲	KLIPPLAAT RIVER (WATERDOWN DAM)	WATER TREATMENT WORKS				119.00
15	▲	KROMME RIVER (IMPOFU DAM)	FROM THE SCHEME				33.22
12	▲	KUBUSI RIVER (GUBU DAM)	FROM THE SCHEME				23.19
12	▲	KWABHACA (NTENETYANE DAM)	FROM THE DAM				67.40
12	▲	KWABHACA (NTENETYANE DAM)	WATER TREATMENT WORKS				119.00
12	▲	LAING DAM	FROM THE DAM				30.80
12	▲	LIBODE (MHLANGA DAM)	FROM THE DAM				67.40
12	▲	LIBODE (MHLANGA DAM)	WATER TREATMENT WORKS				119.00
15	●▲	LOWER FISH RIVER	CANAL/PIPELINE	12 500	5.52	B	16.42
15	▲	LOWER FISH RIVER	FROM THE DAM				16.42
15	●▲■	LOWER SUNDAYS RIVER	FROM THE CANAL	9 000	3.72	B	49.87
15	●■	LOWER SUNDAYS RIVER	PIPELINE	9 000	5.37	B	
15	▲■	LOWER SUNDAYS RIVER <small>Tariff charges for domestic and industrial use: to be applied for volume smaller or equal to 135 000000,00 m<sup>3</sup></small>	SCHEEPERSVLAKTE BALANCING DAM				33.22
15	▲■	LOWER SUNDAYS RIVER <small>Tariff charges for domestic and industrial use: to be applied for volume greater or equal to 135 000000,00 m<sup>3</sup></small>	SCHEEPERSVLAKTE BALANCING DAM				49.87





WMA (refer map)	Foot Notes	Government Water Scheme Name	Scheme Management Parameter	Tariff/Charges For Irrigation Purposes			Tariff/Charges For Domestic and Industrial use
				m <sup>3</sup> Quota Per Ha	Tariff - Cent Per Cubic Metre	Billing Frequency	
12	▲	LUSIKISIKI (XURA WEIR)	RAW WATER FROM THE DAM				67.40
12	▲	LUSIKISIKI (XURA WEIR)	WATER TREATMENT WORKS FROM THE DAM				119.00
12	▲	MACUBENI DAM	WATER TREATMENT WORKS FROM THE DAM				67.40
12	▲	MACUBENI DAM	WATER TREATMENT WORKS FROM THE DAM				119.00
12	▲	MALUTI (BELFORT DAM)	FROM THE WATER TREATMENT WORKS FROM THE DAM				67.40
12	▲	MALUTI (BELFORT DAM)	FROM THE WATER TREATMENT WORKS FROM THE DAM				119.00
12	▲	MHLAHLANE (MABALENI DAM)	WATER TREATMENT WORKS FROM THE DAM				45.32
12	▲	MHLAHLANE (MABALENI DAM)	WATER TREATMENT WORKS FROM THE DAM				119.00
12	▲	NAHOON RIVER (NAHOON DAM)	FROM THE DAM				107.99
12	●	NCORA (NCORA DAM)	FROM THE SCHEME			3.11	44.01
12	▲	OUTSPAN DAM	FROM THE DAM				67.40
12	▲	PLEASANT VIEW DAM	FROM THE DAM				38.45
12	●	QAMATA (LUBISI DAM)	FROM THE CANAL	6 100		8.52	
12	●	QAMATA (LUBISI DAM)	FROM THE DAM	6 100		8.52	



WMA (refer map)	Foot Notes	Government Water Scheme Name	Scheme Management Parameter	Tariff/Charges For Irrigation Purposes			Tariff/Charges For Domestic and Industrial use
				m <sup>3</sup> Quota Per Ha	Tariff - Cent Per Cubic Metre	Billing Frequency	
12	● ▲	ROOIKRANTZ DAM	FROM THE DAM	6 100	6.19	B	35.68
15	●	TARKA RIVER (KOMMANDODRIFT DAM)	FROM THE SCHEME	13 500	1.00	B	
12	▲	TOLENI (TOLENI DAM)	FROM THE DAM				48.39
12	▲	TOLENI (TOLENI DAM)	WATER TREATMENT WORKS				119.00
12	● ▲	TSOJANA DAM	FROM THE DAM	6 100	8.82	B	36.77
12	▲	TSOJANA DAM	WATER TREATMENT WORKS				119.00
15	▲	TYHEFU (NDLAMBE DAM)	FROM THE DAM				67.40
12	▲	UMTATA DAM	FROM THE DAM				54.48
12	▲	XILINXA DAM	FROM THE DAM				27.69
12	▲	XILINXA DAM	WEIR				40.36
12	●	XONXA GWS	FROM THE SCHEME	6 100	1.50	B	
12	● ▲	ZANYOKWE (SANDILE DAM)	FROM THE DAM	6 100	3.24	B	67.40
12	● ▲	ZANYOKWE (SANDILE DAM)	PIPELINE	6 100	3.24	B	67.40
12	● ▲	ZANYOKWE (SANDILE DAM)	SCHEME (NO OTHER DIFFERENTIATORS HAVE BEEN IDENTIFIED)	6 100	3.24	B	67.40



# FOOT NOTES

- In case where a zero cent tariff is to be applied in respect of volumes smaller or equal to servitude volume, only the tariff to be applied per every one  $m^3$  in excess of the servitude arrangement is reflected
- ▲ Tariff / charges for domestic and industrial use: to be applied per every one  $m^3$
- Tariff / charges for irrigation purposes: to be applied per every one  $m^3$

Any of the following changes made to the tariffs, incorporated in the relevant brochure, will be updated on the tariff details to be published on the DWAF-website. These include:

- a) Additional tariffs
- b) Changes to the tariffs incorporated in the brochure:
  - Tariffs that are no longer to be applied (declared as OBSOLETE);
  - Changes to charges;
  - Changes to volume variables.



**For more information, contact your nearest office  
of the Department of Water Affairs and Forestry**

**Mpumalanga Regional Office  
Mr Johan Van Aswegen  
Tel: (013) 755-1674-7**

**Free State Regional Office  
Mr Tseliso Ntili  
Tel: (051) 430 3134**

**KwaZulu-Natal Regional Office  
Mr J.G.G Hansmann  
Tel: (031) 336 2700**

**Gauteng Regional Office  
Mr Hennie Smit  
Tel: (012) 392 1301**

**Limpopo Regional Office  
Mr Stephen Musetsho /  
Prof Ola Busari  
Tel: (015) 290 1217**

**North West Regional Office  
Mr Chedwick Lobakeng  
Tel: (018) 384 3270-6**

**Eastern Cape Regional Office  
Mr Zolile Keke /  
Mr Dewald Coetzee  
Tel: (043) 643 4352**

**Northern Cape Regional Office  
Mr L. J Snyders  
Tel: (053) 831 4125**

**Western Cape Regional Office  
Mr Rashid Khan  
Tel: (021) 950 7100**

