

Water Use Charges for Government Water Schemes and Water Resource Management Charges

2 0 0 3 / 2 0 0 4

Free State Region



**Your partner in building
a better life for all**

www.dwaf.gov.za

**PROUDLY
SOUTH AFRICAN**



Purpose of this document

This document provides you with an alphabetical list, per region, of water use charges for Government Water Schemes or the irrigation districts as well as the latest Water Resource Management charges. The Department of Water Affairs and Forestry review these charges annually. This document lists the new prices for charges for the 2003/2004 financial year, with effect from 1 April 2003.

Summary of sectoral Water Resource Management Charges per Water Management Area

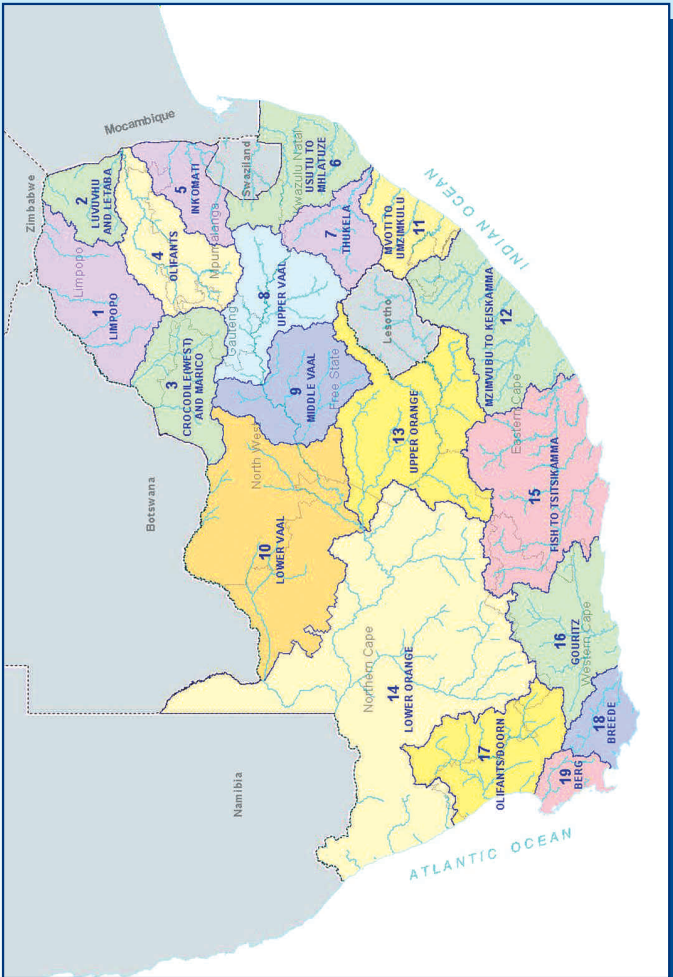
WATER MANAGEMENT AREA		SECTORAL UNIT COST IN C/M ³		
No	Water Management Area	Domestic/ Industrial	Agriculture: Irrigation and watering livestock	Forestry
1	LIMPOPO	0.92	0.58	0.54
2	LUVUVHU AND LETABA	1.33	0.78	0.70
3	CROCODILE (WEST) AND MARICO	0.82	0.63	0.61
4	OLIFANTS	0.89	0.75	0.70
5	INKOMATI	0.85	0.63	0.57
6	USUTU TO MHLATHUZE	0.30	0.30	0.28
7	THUKELA	0.33	0.33	0.31
8	UPPER VAAL	0.96	0.78	0.78
9	MIDDLE VAAL	1.07	1.07	N/A
10	LOWER VAAL	0.59	0.50	N/A
11	MVOTI TO UMZIMKULU	0.81	0.78	0.74
12	MZIMVUBU TO KEISKAMMA	0.85	0.67	0.56
13	UPPER ORANGE	0.38	0.38	N/A
14	LOWER ORANGE	0.49	0.40	N/A
15	FISH TO TSITSIKAMMA	0.89	0.50	0.27
16	GOURITZ	2.36	0.67	0.47
17	OLIFANTS / DOORN	1.77	0.65	0.51
18	BREDE	2.23	0.58	0.39
19	BERG	3.16	0.70	0.54
	Average	1.11	0.61	0.42

ALL CHARGES EXCLUDE VAT

C/M³ (cent per cubic metre)



Map of the Water Management Areas and provincial borders



How to convert cents per m³ to Rand per hectare

The charges listed in the table for irrigation purposes are provided in cents per m³. Should you wish to convert it to Rand per hectare, please follow the instructions below:

Take the total tariff in cent per m³ and divide it by 100. Take the answer and multiply it with the m³ quota per hectare to get to the Rand per hectare amount. *For example see next page:*



For example:

O & M: 2.70 cent per m³ / 100 = R 0.027 per m³
Depreciation: 1.00 cent per m³ / 100 = R 0.01 per m³
Total Tariff: 3.70 cent per m³ /100 = R 0.037 per m³

Total tariff R 0.037 per m³ x 3 000 (m³ quota of water per hectare)
= R111 per hectare

Understanding the abbreviations

WMA	Water Management Area A map of the Water Management Areas is printed in this document for easy identification.
m³	Cubic metre
Ha	Hectare
O & M	Operation and Maintenance The charges for this item fund amongst other salaries of the staff involved with the maintenance work and costs involved in maintaining the schemes to ensure smooth operations.
Deprec'n	Depreciation Charges for this item fund the depreciation on equipment as well as the refurbishment thereof. This fund allows for the replacement of equipment to ensure operational systems.
B	Bi-annually
A	Annually
TBA	To be advised
Billing Fre	Billing Frequency



WMA (refer map)	Foot Notes	Government Water Scheme Name	Scheme Management Parameter	Tariff/Charges For Irrigation Purposes		Tariff/Charges For Domestic and Industrial use	Tariff/Charges For The TCTA
				m ³ Quota Per Ha	Tariff - Cent Per Cubic Metre		
13	▲ ■	CALEDON-MODDER RIVER (WELBEDACHT, RUSTFONTEIN & KNELLPOORT DAMS)	BLOEM WATER [RAW WATER FROM RIVER AND DAMS]			17.29	
13	▲	KGABANAYANE RIVER (GROOTHOEK DAM)	BLOEM WATER			57.39	
13	● ▲	LEEU RIVER (ARMENIA DAM)	RAW WATER FROM THE CANAL SYSTEM	6100	0.18	8.24	
13	● ▲	LEEU RIVER (ARMENIA DAM)	RAW WATER FROM THE DAM AND RIVER	6100	0.18	3.36	
13	▲	MODDER RIVER (KRUGERSDRIFT DAM)	RAW WATER FROM THE DAM AND RIVER			4.90	
13	●	MODDER RIVER (KRUGERSDRIFT DAM)	ZONE 1: WATER ABSTRACTED FROM THE RIVER (KRUGERSDRIFT DAM UP TO RYANSDALE/KALKBANK)	8130	3.06		
13	●	MODDER RIVER (KRUGERSDRIFT DAM)	ZONE 2: WATER ABSTRACTED FROM THE RIVER (RYANSDALE/KALKBANK UP TO SCHOLTZBURG WEIR)	8640	3.06		
13	▲	ORANGE RIVER (GARIEP DAM, VANDERKLOOF DAM & ORANGE-FISH TUNNEL)	ESKOM POWER GENERATION			0.00	
13	▲ ■	ORANGE RIVER (GARIEP DAM, VANDERKLOOF DAM & ORANGE-FISH TUNNEL)	HOPETOWN MUNICIPALITY (RAW WATER ABSTRACTED FROM ANY OF THE DAMS AS WELL AS THE ORANGE RIVER)			4.51	
13	● ▲ ■	ORANGE RIVER (GARIEP DAM, VANDERKLOOF DAM & ORANGE-FISH TUNNEL)	MIDDLE ORANGE WATER CONTROL AREA (BETWEEN HOPETOWN AND DOUGLAS/MARKSDRIFT)		1.03	4.51	
13	▲ ■	ORANGE RIVER (GARIEP DAM, VANDERKLOOF DAM & ORANGE-FISH TUNNEL)	RAW WATER PUMPED BY THE DEPARTMENT FROM VAN DERKLOOF DAM			38.60	
13	● ▲ ■	ORANGE RIVER (GARIEP DAM, VANDERKLOOF DAM & ORANGE-FISH TUNNEL)	VANDERKLOOF GOVERNMENT WATER CONTROL AREA (BETWEEN GARIEP DAM AND HOPETOWN)		1.03	4.51	
13	●	ORANGE RIVER (VANDERKLOOF CANALS)	RAW WATER FROM VANDERKLOOF CANALS		5.85		
13	●	ORANGE-RIET (RIET RIVER SETTLEMENT) & ORANGERIET CANAL	EMERGING FARMERS: IRRIGATION USE SECTOR FROM VANDERKLOOF MAIN CANAL (100% SUBSIDY)		0.00		
13	●	ORANGE-RIET (RIET RIVER SETTLEMENT) & ORANGERIET CANAL	EMERGING FARMERS: IRRIGATION USE SECTOR FROM VANDERKLOOF MAIN CANAL (20% SUBSIDY)		0.50		
13	●	ORANGE-RIET (RIET RIVER SETTLEMENT) & ORANGERIET CANAL	EMERGING FARMERS: IRRIGATION USE SECTOR FROM VANDERKLOOF MAIN CANAL (40% SUBSIDY)		0.37		



WMA (refer map)	Foot Notes	Government Water Scheme Name	Scheme Management Parameter	Tariff/Charges For Irrigation Purposes			Tariff/Charges For Domestic and Industrial use	Tariff/Charges For The TCTA
				m ³ Quota Per Ha	Tariff - Cent Per Cubic Metre	Billing Fre.		
13	●	ORANGE-RIET (RIET RIVER SETTLEMENT) & ORANGERIET CANAL	EMERGING FARMERS: IRRIGATION USE SECTOR FROM VANDERKLOOF MAIN CANAL (60% SUBSIDY)		0.25	B		
13	●	ORANGE-RIET (RIET RIVER SETTLEMENT) & ORANGERIET CANAL	EMERGING FARMERS: IRRIGATION USE SECTOR FROM VANDERKLOOF MAIN CANAL (80% SUBSIDY)		0.12	B		
13	▲	ORANGE-RIET (RIET RIVER SETTLEMENT) & ORANGE-RIET CANAL	RIET RIVER SETTLEMENT CANAL SYSTEM				37.90	
13	●	ORANGE-RIET (RIET RIVER SETTLEMENT) & ORANGE-RIET CANAL	COMMERCIAL FARMERS: IRRIGATION USE SECTOR FROM VANDERKLOOF MAIN CANAL		1.03	B		
13	▲	ORANGE-RIET (RIET RIVER SETTLEMENT) & ORANGE-RIET CANAL	ORANGE-RIET CANAL SYSTEM				32.51	
9	●▲	RHENOSTER RIVER (KOPPIES DAM)	RAW WATER FROM THE CANAL SYSTEM	6100	12.06	B	38.81	
9	●▲	RHENOSTER RIVER (KOPPIES DAM)	RAW WATER FROM THE DAM AND RIVER	6100	3.13	B	14.26	
13	●	RIET RIVER (KALKFONTEIN DAM)	EMERGING FARMERS (RAW WATER FROM THE KALKFONTEIN CANAL SYSTEM)	11000	0.00	B		
13	●	RIET RIVER (KALKFONTEIN DAM) <small>Tariff / charges for irrigation purposes to be applied for volume greater or equal to 754600,00 m³</small>	JACOBSDAL MUNICIPALITY (RAW WATER FROM THE KALKFONTEIN CANAL SYSTEM FOR IRRIGATION)	11000	0.36	B		
13	●	RIET RIVER (KALKFONTEIN DAM) <small>Tariff / charges for irrigation purposes to be applied for volume greater or equal to 754600,00 m³</small>	JACOBSDAL MUNICIPALITY (RAW WATER FROM THE KALKFONTEIN CANAL SYSTEM FOR IRRIGATION)	11000	23.32	B		
13	▲	RIET RIVER (KALKFONTEIN DAM)	KOFFIEFONTEIN MUNICIPALITY (RAW WATER FROM THE KALKFONTEIN CANAL SYSTEM)				23.32	
13	●▲	RIET RIVER (KALKFONTEIN DAM)	RAW WATER FROM KALKFONTEIN DAM	11000	0.36	B	2.89	
13	●▲	RIET RIVER (KALKFONTEIN DAM)	RAW WATER FROM THE KALKFONTEIN CANAL SYSTEM	11000	0.36	B	23.32	
9	●▲	SAND-VET RIVER (ERFENIS & ALLEMANSKRAAL DAM)	FROM ANY OF THE DAMS (DIRECTLY)	7200	1.44	B	6.45	
9	●▲	SAND-VET RIVER (ERFENIS & ALLEMANSKRAAL DAM)	FROM THE CANAL SYSTEM	7200	7.08	B	19.11	
9	●▲	SAND-VET RIVER (ERFENIS & ALLEMANSKRAAL DAM)	FROM THE RIVER	7200	5.65	B	19.11	



WMA (refer map)	Foot Notes	Government Water Scheme Name	Scheme Management Parameter	Tariff/Charges For Irrigation Purposes		Tariff/Charges For Domestic and Industrial use	Tariff/Charges For The TCTA
				m ³ Quota Per Ha	Tariff - Cent Per Cubic Metre		
9	▲ ■	SAND-VET RIVER (ERFENIS & ALLEMANSKRAAL DAM)	HOOPSTAD MUNICIPALITY (RAW WATER FROM THE RIVER)			19.11	
9	▲ ■	SAND-VET RIVER (ERFENIS & ALLEMANSKRAAL DAM)	THEUNISSEN MUNICIPALITY (RAW WATER FROM THE CANAL SYSTEM)			19.11	
9	● ▲	SCHOONSPRUIT (ELANDSKUIL & RIETSPRUIT DAMS)	SCHOONSPRUIT GOVERNMENT WATER SCHEME	7700	7.36	29.09	
13	● ▲	STERKSPRUIT (JOZANASHOEK DAM)	FROM THE DAM	6100	3.11	67.40	
13	▲	STERKSPRUIT (JOZANASHOEK DAM)	WATER TREATMENT WORKS			119.00	
9	● ▲ ■	VAAL RIVER (SYSTEM) - FREE STATE REGION Tariff / charges for the TCTA: to be applied for volume smaller or equal to 137997.583m ³ . Tariff / charges for irrigation purposes to be applied for volume smaller or equal to 137997.583 m ³	ANGLOGOLD VAAL RIVER			0.00	0.00
9	● ▲ ■	VAAL RIVER (SYSTEM) - FREE STATE REGION Tariff / charges for the TCTA: to be applied for volume greater or equal to 137997.583m ³ [i.e. in excess of 137997.583m ³]. Tariff / charges for irrigation purposes to be applied for volume greater or equal to 137997.583 m ³	ANGLOGOLD VAAL RIVER			26.00	116.10
9	▲ ■ ○	VAAL RIVER (SYSTEM) - FREE STATE REGION	USERS IN THE MIDDLE VAAL WMA			26.00	116.10
13	●	WITTESPRUIT (EGMONT DAM)	EGMONT IRRIGATION BOARD	6100	0.20		



FOOT NOTES

- In case where a zero cent tariff is to be applied in respect of volumes smaller or equal to servitude volume, only the tariff to be applied per every one m³ in excess of the servitude arrangement is reflected
- ▲ Tariff / charges for domestic and industrial use: to be applied per every one m³
- Tariff / charges for irrigation purposes: to be applied per every one m³
- Tariff / charges for the TCTA: to be applied per every one m³

Any of the following changes made to the tariffs, incorporated in the relevant brochure, will be updated on the tariff details to be published on the DWAF-website. These include:

- a) Additional tariffs
- b) Changes to the tariffs incorporated in the brochure:
 - Tariffs that are no longer to be applied (declared as OBSOLETE);
 - Changes to charges;
 - Changes to volume variables.

For more information, contact your nearest office of the Department of Water Affairs and Forestry

Mpumalanga Regional Office
Mr Johan Van Aswegen
Tel: (013) 755-1674-7

North West Regional Office
Mr Chedwick Lobakeng
Tel: (018) 384 3270-6

Free State Regional Office
Mr Tseliso Ntli
Tel: (051) 430 3134

Eastern Cape Regional Office
Mr Zolile Keke /
Mr Dewald Coetzee
Tel: (043) 643 4352

KwaZulu-Natal Regional Office
Mr J.G.G Hansmann
Tel: (031) 336 2700

Northern Cape Regional Office
Mr L. J Snyders
Tel: (053) 831 4125

Gauteng Regional Office
Mr Hennie Smit
Tel: (012) 392 1301

Western Cape Regional Office
Mr Rashid Khan
Tel: (021) 950 7100

Limpopo Regional Office
Mr Stephen Musetsho /
Prof Ola Busari
Tel: (015) 290 1217

