

Water Use Charges for Government Water Schemes and Water Resource Management Charges

2 0 0 3 / 2 0 0 4

Gauteng Region



**Your partner in building
a better life for all**

www.dwaf.gov.za

**PROUDLY
SOUTH AFRICAN**



Purpose of this document

This document provides you with an alphabetical list, per region, of water use charges for Government Water Schemes or the irrigation districts as well as the latest Water Resource Management charges. The Department of Water Affairs and Forestry review these charges annually. This document lists the new prices for charges for the 2003/2004 financial year, with effect from 1 April 2003.

Summary of sectoral Water Resource Management Charges per Water Management Area

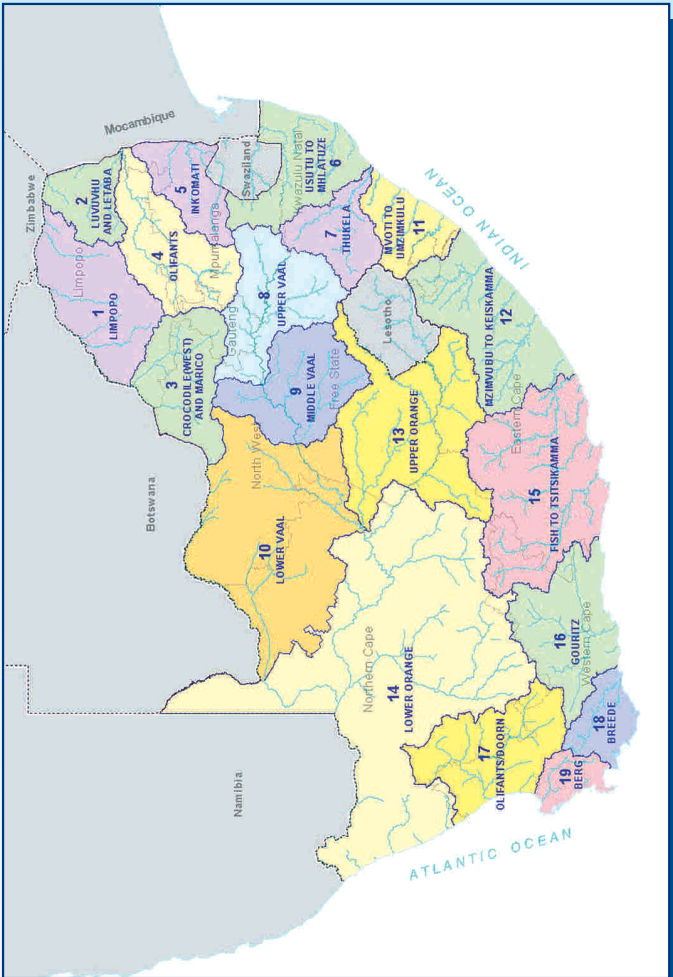
WATER MANAGEMENT AREA		SECTORAL UNIT COST IN C/M ³		
No	Water Management Area	Domestic/ Industrial	Agriculture: Irrigation and watering livestock	Forestry
1	LIMPOPO	0.92	0.58	0.54
2	LUVUVHU AND LETABA	1.33	0.78	0.70
3	CROCODILE (WEST) AND MARICO	0.82	0.63	0.61
4	OLIFANTS	0.89	0.75	0.70
5	INKOMATI	0.85	0.63	0.57
6	USUTU TO MHLATHUZE	0.30	0.30	0.28
7	THUKELA	0.33	0.33	0.31
8	UPPER VAAL	0.96	0.78	0.78
9	MIDDLE VAAL	1.07	1.07	N/A
10	LOWER VAAL	0.59	0.50	N/A
11	MVOTI TO UMZIMKULU	0.81	0.78	0.74
12	MZIMVUBU TO KEISKAMMA	0.85	0.67	0.56
13	UPPER ORANGE	0.38	0.38	N/A
14	LOWER ORANGE	0.49	0.40	N/A
15	FISH TO TSITSIKAMMA	0.89	0.50	0.27
16	GOURITZ	2.36	0.67	0.47
17	OLIFANTS / DOORN	1.77	0.65	0.51
18	BREEDE	2.23	0.58	0.39
19	BERG	3.16	0.70	0.54
	Average	1.11	0.61	0.42

ALL CHARGES EXCLUDE VAT

C/M³ (cent per cubic metre)



Map of the Water Management Areas and provincial borders



How to convert cents per m³ to Rand per hectare

The charges listed in the table for irrigation purposes are provided in cents per m³. Should you wish to convert it to Rand per hectare, please follow the instructions below:

Take the total tariff in cent per m³ and divide it by 100. Take the answer and multiply it with the m³ quota per hectare to get to the Rand per hectare amount. *For example see next page:*



For example:

O & M: 2.70 cent per m³ / 100 = R 0.027 per m³
Depreciation: 1.00 cent per m³ / 100 = R 0.01 per m³
Total Tariff: 3.70 cent per m³ / 100 = R 0.037 per m³

Total tariff R 0.037 per m³ x 3 000 (m³ quota of water per hectare)
= R111 per hectare

Understanding the abbreviations

WMA	Water Management Area A map of the Water Management Areas is printed in this document for easy identification.
m³	Cubic metre
Ha	Hectare
O & M	Operation and Maintenance The charges for this item fund amongst other salaries of the staff involved with the maintenance work and costs involved in maintaining the schemes to ensure smooth operations.
Deprec'n	Depreciation Charges for this item fund the depreciation on equipment as well as the refurbishment thereof. This fund allows for the replacement of equipment to ensure operational systems.
B	Bi-annually
A	Annually
TBA	To be advised
Billing Fre	Billing Frequency



WMA (refer map)	Foot Notes	Government Water Scheme Name	Scheme Management Parameter	Tariff/Charges For Irrigation Purposes		Tariff/Charges For Domestic and Industrial use	Tariff/Charges For The TCTA
				m ³ Quota Per Ha	Tariff - Cent Per Cubic Metre		
4	▲	BLYDE RIVER (BLYDERIVERS-POORT DAM)				2.93	
4	● ▲	BLYDE RIVER (BLYDERIVERS-POORT DAM)	FROM THE BLYDERIVERSPOORT DAM TO LEPELLE WATER WATER THROUGH NEW PIPELINE AND PUMPED FROM RIVER OUT OF DAM STORAGE		1.18	17.76	
4	▲ ▲	BRONKHORSTSPRUIT DAM	FROM DAM TO MAGALIES WATER			8.54	
4	● ▲	BRONKHORSTSPRUIT DAM	FROM THE DAM	7150	5.95	8.54	
7	● ▲	BUSHMANS RIVER GWS (WAGENDRIFT DAM)	FROM THE SCHEME		2.20	10.05	
5	● ▲	CROCODILE RIVER (KWENA DAM)	"VARIOUS"		0.55	11.61	
4	▲	ELANDS RIVER (RHENOSTERKOP DAM)	ELANDS RIVER (RHENOSTERKOP DAM)			21.91	
4	●	ELANDS RIVER (RUST DE WINTER DAM)	FROM CANAL TO EMERGING FARMERS	7000	2.44		
4	▲	ELANDS RIVER (RUST DE WINTER DAM)	FROM DEPARTMENTAL PURIFICATION WORKS FOR SETTLEMENT			82.26	
4	● ▲	ELANDS RIVER (RUST DE WINTER DAM)	FROM THE CANAL/PIPELINE	7000	7.09	36.82	
4	▲	ELANDS RIVER (RUST DE WINTER DAM)	FROM THE DAM			7.71	
4	● ▲	GROOT DWARS RIVER (DER BROCHEN DAM)	FROM THE DAM	6700	1.47	17.65	
6	● ▲	HLUHLUWE RIVER GWS (HLUHLUWE DAM)	FROM THE SCHEME	7320	6.45	19.38	
4	● ▲	KLASERIE RIVER (KLASERIE DAM)	FROM THE DAM AND THE RIVER	9900	1.20	1.20	
5	● ▲	KOMATI RIVER (DRIEKOPPIES & MAGUGA DAMS)	FROM THE DAM: COMMERCIAL USERS		1.95	21.37	
5	●	KOMATI RIVER (DRIEKOPPIES & MAGUGA DAMS)	FROM THE DAM: EMERGING FARMERS		0.39		
5	▲	KOMATI RIVER (VYGEBOOM AND NOOITGEDACHT DAMS)	DUVHA TO HENDRINA PIPELINE			90.74	
5	●	KOMATI RIVER (VYGEBOOM AND NOOITGEDACHT DAMS)	FROM GLADDESPRUIT CANAL		2.80		
5	●	KOMATI RIVER (VYGEBOOM AND NOOITGEDACHT DAMS)	FROM THE DAM	7810	0.66		
5	▲	KOMATI RIVER (VYGEBOOM AND NOOITGEDACHT DAMS)	UPPER KOMATI (I.E. ESKOM)			8.27	
8	●	LOOPSPRUIT (KLIPDRIFT DAM)	FROM THE SCHEME	5875	1.00		
4	● ▲	MAPOCHSGRONDEN (TONTELDOOS AND VLUGKRAAL DAMS)	FROM THE CANAL	5000	6.16	46.50	
7	●	MNYAMVUBU RIVER GWS (CRAIGIE BURN DAM)	FROM THE SCHEME	7600	4.95		
8	●	MOOI RIVER (BOSKOP AND KLERKSKRAAL DAMS)	FROM THE CANAL	7700	5.83		



WMA (refer map)	Foot Notes	Government Water Scheme Name	Scheme Management Parameter	Tariff/Charges For Irrigation Purposes		Tariff/Charges For Domestic and Industrial use	Tariff/Charges For The TCTA
				m ³ Quota Per Ha	Tariff - Cent Per Cubic Metre		
8	▲	MOOI RIVER (BOSKOP AND KLERKSKRAAL DAMS)	FROM THE CANAL SYSTEM TO POTCHEFSTROOM			TBA	
8	●	MOOI RIVER (BOSKOP AND KLERKSKRAAL DAMS)	FROM THE RIVER	7700	TBA		
7	▲	NGAGANE RIVER GWS (INTSHINGWAYO DAM)	FROM THE SCHEME		4.53	18.01	
4	●	OHRIKSTAD RIVER (OHRIKSTAD DAM)	FROM THE DAM AND THE RIVER	7000	3.14		
4	▲	OHRIKSTAD RIVER (OHRIKSTAD DAM)	FROM THE DAM		2.54	25.24	
4	●	OLIFANTS RIVER (FLAG BOSHELLO DAM)	RAW WATER FROM DAM	7700	0.87	7.42	
4	●	OLIFANTS RIVER (LOSKOP DAM)	RAW WATER FROM DAM TO FORMER LEBOWA FARMS	7700	0.87		
4	●	OLIFANTS RIVER (LOSKOP DAM)	RAW WATER FROM DAM TO HEREFORD IRRIGATION BOARD	7700	0.87		
4	●	OLIFANTS RIVER (LOSKOP DAM)	RAW WATER FROM DAM TO OLIFANTS RIVER I/BOARD	7700	0.87		
4	●	OLIFANTS RIVER (LOSKOP DAM)	RAW WATER FROM DAM TO PREVIOUS SAOT FARMS	7700	0.87		
4	▲	OLIFANTS RIVER (LOSKOP DAM)	RAW WATER TO MIDDELBURG MUNICIPALITY CONSIDERED AS FROM LOSKOP			7.42	
6	●	PONGOLA RIVER GWS (PONGOLAPOORT DAM AND MAKATINI FLATS)	FROM THE SCHEME (i.e. DAM, CANAL, RIVER)		1.68	14.63	
6	●	PONGOLA RIVER GWS (PONGOLAPOORT DAM AND MAKATINI FLATS)	TO EMERGING FARMERS FROM THE SCHEME (i.e. DAM, CANAL, RIVER)		0.93		
6	●	PONGOLA RIVER GWS (WEIR AND CANALS)	FROM THE SCHEME		0.00	0.00	
5	▲	SAND RIVER (WITKLIIP DAM)	FROM THE DAM		6.25	16.89	
5	●	SAND RIVER (WITKLIIP DAM)	FROM THE DAM: AVELON FARMS				
5	●	SAND RIVER (WITKLIIP DAM)	FROM THE DAM: E.J. KAY		6.25		
7	▲	SLANG RIVER GWS (ZAAIHOEK DAM) - [WMA THUKELA]	FROM THE DAM			23.28	
8	○	SLANG RIVER GWS (ZAAIHOEK DAM) - [WMA UPPER VAAL]	FROM THE PIPELINES AND THE AQUEDUCT TO GROOTDRAAI DAM			26.00	116.10
4	▲	TOURS DAM	FROM THE DAM			57.39	
7	●	TUGELA RIVER GWS (SPIOENKOP DAM)	FROM THE SCHEME		4.75	9.23	
6	●	TUGELA-MHLATUZE GWS	FROM THE SCHEME TO ALL CONSUMERS (EXCLUDED DOMESTIC AND INDUSTRIAL USE)		2.25		
6	▲	TUGELA-MHLATUZE GWS	FROM THE SCHEME TO CONSUMERS WITH SERVITUDE WATER ALLOCATION FOR DOMESTIC AND INDUSTRIAL USE. WATER USE IN EXCESS OF THE REGISTERED VOLUMES HAVE BEEN INCORPORATED IN THEMHLATUZE WATER (I.E. WSP RELATED PART 2 VOLUMES). SELECTING THIS SMP WILL RESULT IN ONLY WRM CHARGES BEING LEVIED IN RESPECT OF THE PART 2 TWO WHICH THIS SMP IS LINKED			0.00	



WMA (refer map)		Foot Notes	Government Water Scheme Name	Scheme Management Parameter	Tariff/Charges For Irrigation Purposes		Tariff/Charges For Domestic and Industrial use	Tariff/Charges For The TCTA
					m ³ Quota Per Ha	Tariff - Cent Per Cubic Metre	Tariff - Cent Per Cubic Metre	Tariff - Cent Per Cubic Metre
6	▲		TUGELA-MHLATUZE GWS	FROM THE SCHEME TO MHLATUZE WATER FOR DOMESTIC AND INDUSTRIAL USE			22.78	
6	▲		TUGELA-MHLATUZE GWS	FROM THE SCHEME TO OTHER NON-SERVITUDE CONSUMERS (EXCLUDING MHLATUZE WATER) FOR DOMESTIC AND INDUSTRIAL USE			42.78	
7	▲		TUGELA-VAAL GWS	FROM SYSTEM UP TO AND INCLUDING THE JAGERSRUST BALANCING DAM [TUGELA-VAAL RIVER AQUADUCT]			8.69	
8	▲		TUGELA-VAAL GWS [WMA - UPPER VAAL]	FROM STERKONTEIN DAM [TUGELA-VAAL RIVER AQUADUCT]			89.65	
6	▲		USUTU RIVER GWS (JERICHO, MORGENSTOND AND WESTOE DAMS)	CAMDEN [ESKOM]			50.44	
6	▲		USUTU RIVER GWS (JERICHO, MORGENSTOND AND WESTOE DAMS)	CAMDEN LILLIEPUT			195.90	
6	▲		USUTU RIVER GWS (JERICHO, MORGENSTOND AND WESTOE DAMS)	CAMDEN/KRIEL PIPELINE			162.52	
6	▲		USUTU RIVER GWS (JERICHO, MORGENSTOND AND WESTOE DAMS)	FROM THE DAMS: (JERICHO, MORGENSTOND AND WESTOE DAMS)			117.45	
6	▲		USUTU RIVER GWS (JERICHO, MORGENSTOND AND WESTOE DAMS)	FROM THE JERICHO/CAMDEN PIPELINE			117.45	
6	▲		USUTU RIVER GWS (JERICHO, MORGENSTOND AND WESTOE DAMS)	KENDAL (ESKOM)			163.28	
6	▲		USUTU RIVER GWS (JERICHO, MORGENSTOND AND WESTOE DAMS)	KHUTALA/KENDAL PIPELINE			320.23	
6	▲		USUTU RIVER GWS (JERICHO, MORGENSTOND AND WESTOE DAMS)	KRIEL (ESKOM)			62.79	
8	○▲		USUTU-VAAL RIVER (PHASE 1)(GROOTDRAAI DAM - [WMA UPPER VAAL])	GROOTDRAAI TO KNOPPIESFONTEIN			67.45	116.10
8	○▲		USUTU-VAAL RIVER (PHASE 1)(GROOTDRAAI DAM - [WMA UPPER VAAL])	GROOTDRAAI TO TUTUKA			66.66	116.10



WMA (refer map)	Foot Notes	Government Water Scheme Name	Scheme Management Parameter	Tariff/Charges For Irrigation Purposes		Tariff/Charges For Domestic and Industrial use	Tariff/Charges For The TCTA
				m ³ Quota Per Ha	Tariff - Cent Per Cubic Metre		
8	○ ▲	USUTU-VAAL RIVER (PHASE 1)(GROOTDRAAI DAM - [WMA UPPER VAAL])	KNOPPIESFONTEIN TO BOSSIESPRUIT			73.21	116.10
8	○ ▲	USUTU-VAAL RIVER (PHASE 1)(GROOTDRAAI DAM - [WMA UPPER VAAL])	KNOPPIESFONTEIN TO TRICHARDSFONTEIN			109.15	116.10
8	○ ▲	USUTU-VAAL RIVER (PHASE 1)(GROOTDRAAI DAM - [WMA UPPER VAAL])	MATLA ESKOM			26.00	116.10
8	○ ▲	USUTU-VAAL RIVER (PHASE 1)(GROOTDRAAI DAM - [WMA UPPER VAAL])	NAAUWPOORT TO DUVHA			316.34	116.10
8	○ ▲	USUTU-VAAL RIVER (PHASE 1)(GROOTDRAAI DAM - [WMA UPPER VAAL])	PURIFICATION WORKS			82.00	116.10
8	○ ▲	USUTU-VAAL RIVER (PHASE 1)(GROOTDRAAI DAM - [WMA UPPER VAAL])	RIETFONTEIN TO MATLA			143.47	116.10
8	○ ▲	USUTU-VAAL RIVER (PHASE 1)(GROOTDRAAI DAM - [WMA UPPER VAAL])	TUTUKA ESKOM			26.00	116.10
4	○ ▲	USUTU-VAAL RIVER GWS (PHASE 1)(GROOTDRAAI DAM) - [WMA OLIFANTS]	TRICHARFDSFONTEIN TO WITBANK DAM			154.20	116.10
6	▲	USUTU-VAAL RIVER GWS (PHASE 2)(HEYSHOPE DAM)	FROM THE DAM			5.85	
6	▲	USUTU-VAAL RIVER GWS (PHASE 2)(HEYSHOPE DAM)	GEELHOUTBOOM TO GROOTDRAAI DAM			48.01	
6	▲	USUTU-VAAL RIVER GWS (PHASE 2)(HEYSHOPE DAM)	HEYSHOPE TO DRIEFONTEIN			23.61	
6	▲	USUTU-VAAL RIVER GWS (PHASE 2)(HEYSHOPE DAM)	HEYSHOPE TO GEELHOUTBOOM			25.57	
8	○ ▲ ■	VAAL RIVER (SYSTEM) UPPER VAAL	A. GREEN [VAAL RIVER DEV SCHEME]			26.00	116.10
8	○ ▲ ■	VAAL RIVER (SYSTEM) UPPER VAAL	AELIONS CLUB [VAAL RIVER DEV SCHEME]			26.00	116.10
8	○ ▲ ■	VAAL RIVER (SYSTEM) UPPER VAAL	BALFOUR MUNICIPALITY [VAAL RIVER DEV SCHEME]			26.00	116.10
8	○ ▲ ■	VAAL RIVER (SYSTEM) UPPER VAAL	ERIKA KWEKERY [VAAL RIVER DEV SCHEME]			26.00	116.10



WMA (refer map)	Foot Notes	Government Water Scheme Name	Scheme Management Parameter	Tariff/Charges For Irrigation Purposes		Tariff/Charges For Domestic and Industrial use	Tariff/Charges For The TCTA
				m ³ Quota Per Ha	Tariff - Cent Per Cubic Metre		
8	○ ▲	VAAL RIVER (SYSTEM) UPPER VAAL	F. SUPRA (E.P. ROSSOU) [VAAL RIVER DEV SCHEME]			26.00	116.10
8	○ ▲	VAAL RIVER (SYSTEM) UPPER VAAL	G. COLEMAN [VAAL RIVER DEV SCHEME]			26.00	116.10
8	○ ▲	VAAL RIVER (SYSTEM) UPPER VAAL	INDICOT FARMING [VAAL RIVER DEV SCHEME]			26.00	116.10
8	○ ▲	VAAL RIVER (SYSTEM) UPPER VAAL	KARAN ESTATES [VAAL RIVER DEV SCHEME]			26.00	116.10
8	○ ▲	VAAL RIVER (SYSTEM) UPPER VAAL	PARKIN BRICKS SAND AND CLAY [VAAL RIVER DEV SCHEME]			26.00	116.10
8	○ ▲	VAAL RIVER (SYSTEM) UPPER VAAL	R.F. GARMANY [VAAL RIVER DEV SCHEME]			26.00	116.10
8	○ ▲	VAAL RIVER (SYSTEM) UPPER VAAL	SCHEME			26.00	116.10
8	○ ▲	VAAL RIVER (SYSTEM) UPPER VAAL	T. FORD [VAAL RIVER DEV SCHEME]			26.00	116.10
4	●	WATERVALS RIVER (BUFFELSKLOOF DAM)	FROM THE SCHEME	7500	3.81		
6	● ▲	WHITE MFOLOZI RIVER GWS (KLIPFONTEIN DAM)	FROM THE SCHEME	6500	5.78	39.87	
6	● ▲	WHITE MFOLOZI RIVER GWS (KLIPFONTEIN DAM)	FROM THE SCHEME TO ULUNDI			39.87	
6	▲	WHITE MFOLOZI RIVER GWS (KLIPFONTEIN DAM)	FROM THE SCHEME TO VRYHEID MUNICIPALITY			39.87	



FOOT NOTES

- In case where a zero cent tariff is to be applied in respect of volumes smaller or equal to servitude volume, only the tariff to be applied per every one m^3 in excess of the servitude arrangement is reflected
- ▲ Tariff / charges for domestic and industrial use: to be applied per every one m^3
- Tariff / charges for irrigation purposes: to be applied per every one m^3
- Tariff / charges for the TCTA: to be applied per every one m^3

Any of the following changes made to the tariffs, incorporated in the relevant brochure, will be updated on the tariff details to be published on the DWAf-website. These include:

- a) Additional tariffs
- b) Changes to the tariffs incorporated in the brochure:
 - Tariffs that are no longer to be applied (declared as OBSOLETE);
 - Changes to charges;
 - Changes to volume variables.



**For more information, contact your nearest office
of the Department of Water Affairs and Forestry**

**Mpumalanga Regional Office
Mr Johan Van Aswegen
Tel: (013) 755-1674-7**

**Free State Regional Office
Mr Tseliso Ntili
Tel: (051) 430 3134**

**KwaZulu-Natal Regional Office
Mr J.G.G Hansmann
Tel: (031) 336 2700**

**Gauteng Regional Office
Mr Hennie Smit
Tel: (012) 392 1301**

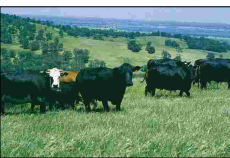
**Limpopo Regional Office
Mr Stephen Musetsho /
Prof Ola Busari
Tel: (015) 290 1217**

**North West Regional Office
Mr Chedwick Lobakeng
Tel: (018) 384 3270-6**

**Eastern Cape Regional Office
Mr Zolile Keke /
Mr Dewald Coetzee
Tel: (043) 643 4352**

**Northern Cape Regional Office
Mr L. J Snyders
Tel: (053) 831 4125**

**Western Cape Regional Office
Mr Rashid Khan
Tel: (021) 950 7100**





Department: Water Affairs and Forestry