

Water Use Charges for Government Water Schemes and Water Resource Management Charges

2 0 0 3 / 2 0 0 4

KwaZulu-Natal Region



Department: Water Affairs and Forestry

**Your partner in building
a better life for all**

www.dwaf.gov.za

**PROUDLY
SOUTH AFRICAN**





Purpose of this document

This document provides you with an alphabetical list, per region, of water use charges for Government Water Schemes or the irrigation districts as well as the latest Water Resource Management charges. The Department of Water Affairs and Forestry review these charges annually. This document lists the new prices for charges for the 2003/2004 financial year, with effect from 1 April 2003.

Summary of sectoral Water Resource Management Charges per Water Management Area

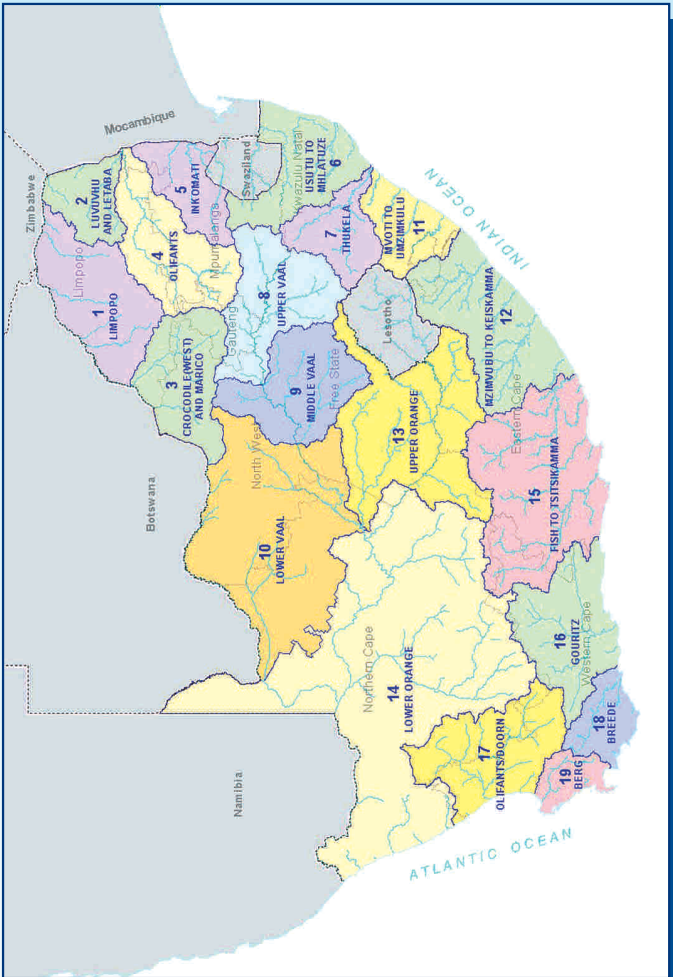
WATER MANAGEMENT AREA		SECTORAL UNIT COST IN C/M ³		
No	Water Management Area	Domestic/ Industrial	Agriculture: Irrigation and watering livestock	Forestry
1	LIMPOPO	0.92	0.58	0.54
2	LUVUVHU AND LETABA	1.33	0.78	0.70
3	CROCODILE (WEST) AND MARICO	0.82	0.63	0.61
4	OLIFANTS	0.89	0.75	0.70
5	INKOMATI	0.85	0.63	0.57
6	USUTU TO MHLATHUZE	0.30	0.30	0.28
7	THUKELA	0.33	0.33	0.31
8	UPPER VAAL	0.96	0.78	0.78
9	MIDDLE VAAL	1.07	1.07	N/A
10	LOWER VAAL	0.59	0.50	N/A
11	MVOTI TO UMZIMKULU	0.81	0.78	0.74
12	MZIMVUBU TO KEISKAMMA	0.85	0.67	0.56
13	UPPER ORANGE	0.38	0.38	N/A
14	LOWER ORANGE	0.49	0.40	N/A
15	FISH TO TSITSIKAMMA	0.89	0.50	0.27
16	GOURITZ	2.36	0.67	0.47
17	OLIFANTS / DOORN	1.77	0.65	0.51
18	BREDE	2.23	0.58	0.39
19	BERG	3.16	0.70	0.54
	Average	1.11	0.61	0.42

ALL CHARGES EXCLUDE VAT

C/M³ (cent per cubic metre)



Map of the Water Management Areas and provincial borders



How to convert cents per m³ to Rand per hectare

The charges listed in the table for irrigation purposes are provided in cents per m³. Should you wish to convert it to Rand per hectare, please follow the instructions below:

Take the total tariff in cent per m³ and divide it by 100. Take the answer and multiply it with the m³ quota per hectare to get to the Rand per hectare amount. *For example see next page:*



For example:

O & M: 2.70 cent per m³ / 100 = R 0.027 per m³
Depreciation: 1.00 cent per m³ / 100 = R 0.01 per m³
Total Tariff: 3.70 cent per m³ / 100 = R 0.037 per m³

Total tariff R 0.037 per m³ x 3 000 (m³ quota of water per hectare)
= R111 per hectare

Understanding the abbreviations

WMA	Water Management Area A map of the Water Management Areas is printed in this document for easy identification.
m³	Cubic metre
Ha	Hectare
O & M	Operation and Maintenance The charges for this item fund amongst other salaries of the staff involved with the maintenance work and costs involved in maintaining the schemes to ensure smooth operations.
Deprec'n	Depreciation Charges for this item fund the depreciation on equipment as well as the refurbishment thereof. This fund allows for the replacement of equipment to ensure operational systems.
B	Bi-annually
A	Annually
TBA	To be advised
Billing Fre	Billing Frequency



WMA (refer map)	Foot Notes	Government Water Scheme Name	Scheme Management Parameter	Tariff/Charges For Irrigation Purposes			Tariff/Charges For Domestic and Industrial use
				m ³ Quota Per Ha	Tariff - Cent Per Cubic Metre	Billing Fre.	
12	▲	AMATOLA (WRIGGLESWADE DAM)	FROM THE CANAL				95.62
12	▲	AMATOLA (WRIGGLESWADE DAM)	FROM THE DAM				53.99
12	▲	AMATOLA (WRIGGLESWADE DAM)	FROM THE RIVER				95.62
12	●	BINFELD PARK DAM	FROM THE SCHEME	6100	3.46	B	60.19
12	▲	BIZANA (BIZANA DAM)	FROM THE DAM				67.40
12	▲	BIZANA (BIZANA DAM)	WATER TREATMENT WORKS				119.00
7	●	BUSHMANS RIVER GWS (WAGENDRIFT DAM)	FROM THE SCHEME	7150	2.20	B	10.05
12	▲	BUSHMANSKRANTZ DAM	FROM THE SCHEME				67.40
12	▲	CORANA (CORANA DAM)	FROM THE DAM				67.40
12	▲	CORANA (CORANA DAM)	FROM THE DAM				67.40
12	▲	CORANA (CORANA DAM)	WATER TREATMENT WORKS				119.00
12	▲	DABI DAM	FROM THE DAM				67.40
12	▲	DEBE DAM	FROM THE DAM				67.40
12	●	DOORN RIVER (DOORN RIVER DAM)	FROM THE DAM	6100	14.50	B	40.81
6	●	HLUHLUWE RIVER GWS (HLUHLUWE DAM)	FROM THE SCHEME	7320	6.45	B	19.38
12	●	KEISKAMMAHOEK (CATA DAM)	FROM THE SCHEME	6100	6.08	B	67.40
12	●	KEISKAMMAHOEK (MNYAMENI DAM)	FROM THE SCHEME	6100	5.86	B	67.40
12	●	KLIPLAAT RIVER (WATERDOWN DAM)	FROM THE CANAL	6100	3.33	B	67.40
12	●	KLIPLAAT RIVER (WATERDOWN DAM)	FROM THE DAM	6100	3.33	B	10.54
12	▲	KLIPLAAT RIVER (WATERDOWN DAM)	WATER TREATMENT WORKS				119.00
12	▲	KUBUSI RIVER (GUBU DAM)	FROM THE SCHEME				23.19
12	▲	KWABHACA (NTENETYANE DAM)	FROM THE DAM				67.40
12	▲	KWABHACA (NTENETYANE DAM)	WATER TREATMENT WORKS				119.00
12	▲	LAING DAM	FROM THE DAM				30.80
12	▲	LIBODE (MHLANGA DAM)	FROM THE DAM				67.40
12	▲	LIBODE (MHLANGA DAM)	WATER TREATMENT WORKS				119.00
12	▲	LUSIKISIKI (XURA WEIR)	RAW WATER FROM THE DAM				67.40
12	▲	LUSIKISIKI (XURA WEIR)	WATER TREATMENT WORKS				119.00
12	▲	MACUBENI DAM	FROM THE DAM				67.40
12	▲	MACUBENI DAM	WATER TREATMENT WORKS				119.00
12	▲	MALUTI (BELFORT DAM)	FROM THE DAM				67.40
12	▲	MALUTI (BELFORT DAM)	FROM THE WATER TREATMENT WORKS				119.00



WMA (refer map)	Foot Notes	Government Water Scheme Name	Scheme Management Parameter	Tariff/Charges For Irrigation Purposes			Tariff/Charges For Domestic and Industrial use
				m ³ Quota Per Ha	Tariff - Cent Per Cubic Metre	Billing Fre.	
11	●▲	MDLOTI RIVER GWS (HAZELMERE DAM)	FROM THE SCHEME	4600	0.00	B	49.42
12	▲	MHLAHLANE (MABALENI DAM)	FROM THE DAM				45.32
12	▲	MHLAHLANE (MABALENI DAM)	WATER TREATMENT WORKS				119.00
7	●	MNYAMVUBU RIVER GWS (CRAIGIE BURN DAM)	FROM THE SCHEME	7600	4.95	B	
12	▲	NAHOON RIVER (NAHOON DAM)	FROM THE DAM				107.99
12	●▲	NCORA (NCORA DAM)	FROM THE SCHEME		3.11	B	44.01
7	●▲	NGAGANE RIVER GWS (NTSHINGWAYO DAM)	FROM THE SCHEME		4.53	B	18.01
12	▲	OUTSPAN DAM	FROM THE DAM				67.40
12	▲	PLEASANT VIEW DAM	FROM THE DAM				38.45
6	●▲	PONGOLA RIVER GWS (PONGOLAPOORT DAM AND MAKATINI FLATS)	FROM THE SCHEME (i.e. DAM, CANAL, RIVER)		1.68	B	14.63
6	●	PONGOLA RIVER GWS (PONGOLAPOORT DAM AND MAKATINI FLATS)	TO EMERGING FARMERS FROM THE SCHEME (i.e. DAM, CANAL, RIVER)		0.93	B	
6	●▲	PONGOLA RIVER GWS (WEIR AND CANALS)	FROM THE SCHEME		0.00	B	0.00
12	●	QAMATA (LUBISI DAM)	FROM THE CANAL	6100	8.52	B	
12	●	QAMATA (LUBISI DAM)	FROM THE DAM	6100	8.52	B	
12	●▲	ROOIKRANTZ DAM	FROM THE DAM	6100	6.19	B	35.68
7	▲	SLANG RIVER GWS (ZAAIHOEK DAM) - [WMA THUKELA]	FROM THE DAM				23.28
12	▲	TOLENI (TOLENI DAM)	FROM THE DAM				48.39
12	▲	TOLENI (TOLENI DAM)	WATER TREATMENT WORKS				119.00
12	●▲	TSOJANA DAM	FROM THE DAM	6100	8.82	B	36.77
12	▲	TSOJANA DAM	WATER TREATMENT WORKS				119.00
7	●▲	TUGELA RIVER GWS (SPOENKOP DAM)	FROM THE SCHEME		4.75	B	9.23
6	●	TUGELA-MHLATUZE GWS	FROM THE SCHEME TO ALL CONSUMERS (EXCLUDED DOMESTIC AND INDUSTRIAL USE)		2.25	B	



WMA (refer map)	Foot Notes	Government Water Scheme Name	Scheme Management Parameter	Tariff/Charges For Irrigation Purposes			Tariff/Charges For Domestic and Industrial use
				m ³ Quota Per Ha	Tariff - Cent Per Cubic Metre	Billing Fre.	
6	▲	TUGELA-MHLATUZE GWS	FROM THE SCHEME TO CONSUMERS WITH SERVITUDE WATER ALLOCATION FOR DOMESTIC AND INDUSTRIAL USE. WATER USE IN EXCESS OF THE REGISTERED VOLUMES HAVE BEEN INCORPORATED IN THE MHLATUZE WATER (I.E. WSP RELATED PART 2 VOLUMES). SELECTING THIS SMP WILL RESULT IN ONLY WRM CHARGES BEING LEVIED IN RESPECT OF THE PART 2 TWO WHICH THIS SMP IS LINKED			0.00	
6	▲	TUGELA-MHLATUZE GWS	FROM THE SCHEME TO MHLATUZE WATER FOR DOMESTIC AND INDUSTRIAL USE			22.78	
6	▲	TUGELA-MHLATUZE GWS	FROM THE SCHEME TO OTHER NON-SERVITUDE CONSUMERS (EXCLUDING MHLATUZE WATER) FOR DOMESTIC AND INDUSTRIAL USE			42.78	
7	▲	TUGELA-VAAL GWS	FROM SYSTEM UP TO AND INCLUDING THE JAGERSRUST BALANCING DAM [TUGELA-VAAL RIVER AQUADUCT]			8.69	
11	●▲	UMGENI RIVER GWS (MIDMAR, ALBERT FALLS AND INANDA DAMS)	FROM THE SCHEME		0.00	15.64	
12	▲	UMTATA DAM	FROM THE DAM			54.48	
6	▲	USUTU RIVER GWS (JERICHO, MORGENSTOND AND WESTOE DAMS)	CAMDEN [ESKOM]			50.44	
6	▲	USUTU RIVER GWS (JERICHO, MORGENSTOND AND WESTOE DAMS)	CAMDEN LILLIEPUT			195.90	
6	▲	USUTU RIVER GWS (JERICHO, MORGENSTOND AND WESTOE DAMS)	CAMDEN/KRIEL PIPELINE			162.52	
6	▲	USUTU RIVER GWS (JERICHO, MORGENSTOND AND WESTOE DAMS)	FROM THE DAMS: (JERICHO, MORGENSTOND AND WESTOE DAMS)			117.45	
6	▲	USUTU RIVER GWS (JERICHO, MORGENSTOND AND WESTOE DAMS)	FROM THE JERICHO/CAMDEN PIPELINE			117.45	
6	▲	USUTU RIVER GWS (JERICHO, MORGENSTOND AND WESTOE DAMS)	KENDAL (ESKOM)			163.28	



WMA (refer map)	Foot Notes	Government Water Scheme Name	Scheme Management Parameter	Tariff/Charges For Irrigation Purposes			Tariff/Charges For Domestic and Industrial use
				m ³ Quota Per Ha	Tariff - Cent Per Cubic Metre	Billing Fre.	
6	▲	USUTU RIVER GWS (JERICHO, MORGENSTOND AND WESTOE DAMS)	KHUTALA/KENDAL PIPELINE				320.23
6	▲	USUTU RIVER GWS (JERICHO, MORGENSTOND AND WESTOE DAMS)	KRIEL (ESKOM)				62.79
6	▲	USUTU-VAAL RIVER GWS (PHASE 2)(HEYSHOPE DAM)	FROM THE DAM				5.85
6	▲	USUTU-VAAL RIVER GWS (PHASE 2)(HEYSHOPE DAM)	GEELHOUTBOOM TO GROOTDRAAI DAM				48.01
6	▲	USUTU-VAAL RIVER GWS (PHASE 2)(HEYSHOPE DAM)	HEYSHOPE TO DRIEFONTEIN				23.61
6	▲	USUTU-VAAL RIVER GWS (PHASE 2)(HEYSHOPE DAM)	HEYSHOPE TO GEELHOUTBOOM				25.57
6	●▲■	WHITE MFOLOZI RIVER GWS (KLIPFONTEIN DAM)	FROM THE SCHEME	6500	5.78	A & B	39.87
6	▲■	WHITE MFOLOZI RIVER GWS (KLIPFONTEIN DAM)	FROM THE SCHEME TO ULUNDI				39.87
6	▲■	WHITE MFOLOZI RIVER GWS (KLIPFONTEIN DAM)	FROM THE SCHEME TO VRYHEID MUNICIPALITY				39.87
12	▲	XILINXA DAM	FROM THE DAM				27.69
12	▲	XILINXA DAM	WEIR				40.36
12	●	XONXA GWS	FROM THE SCHEME	6100	1.50	B	
12	●▲	ZANYOKWE (SANDILE DAM)	FROM THE DAM	6100	3.24	B	67.40
12	●▲	ZANYOKWE (SANDILE DAM)	PIPELINE	6100	3.24	B	67.40
12	●▲	ZANYOKWE (SANDILE DAM)	SCHEME (NO OTHER DIFFERENTIATORS HAVE BEEN IDENTIFIED)	6100	3.24	B	67.40



FOOT NOTES

- In case where a zero cent tariff is to be applied in respect of volumes smaller or equal to servitude volume, only the tariff to be applied per every one m^3 in excess of the servitude arrangement is reflected
- ▲ Tariff / charges for domestic and industrial use: to be applied per every one m^3
- Tariff / charges for irrigation purposes: to be applied per every one m^3
- Tariff / charges for the TCTA: to be applied per every one m^3

Any of the following changes made to the tariffs, incorporated in the relevant brochure, will be updated on the tariff details to be published on the DWAf-website. These include:

- a) Additional tariffs
- b) Changes to the tariffs incorporated in the brochure:
 - Tariffs that are no longer to be applied (declared as OBSOLETE);
 - Changes to charges;
 - Changes to volume variables.



**For more information, contact your nearest office
of the Department of Water Affairs and Forestry**

**Mpumalanga Regional Office
Mr Johan Van Aswegen
Tel: (013) 755-1674-7**

**Free State Regional Office
Mr Tseliso Ntili
Tel: (051) 430 3134**

**KwaZulu-Natal Regional Office
Mr J.G.G Hansmann
Tel: (031) 336 2700**

**Gauteng Regional Office
Mr Hennie Smit
Tel: (012) 392 1301**

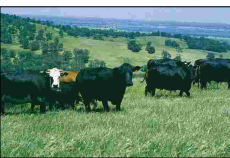
**Limpopo Regional Office
Mr Stephen Musetsho /
Prof Ola Busari
Tel: (015) 290 1217**

**North West Regional Office
Mr Chedwick Lobakeng
Tel: (018) 384 3270-6**

**Eastern Cape Regional Office
Mr Zolile Keke /
Mr Dewald Coetzee
Tel: (043) 643 4352**

**Northern Cape Regional Office
Mr L. J Snyders
Tel: (053) 831 4125**

**Western Cape Regional Office
Mr Rashid Khan
Tel: (021) 950 7100**





Department: Water Affairs and Forestry