

Water Use Charges for Government Water Schemes and Water Resource Management Charges

2 0 0 3 / 2 0 0 4

Limpopo Region



Department: Water Affairs and Forestry

**Your partner in building
a better life for all**

www.dwaf.gov.za

**PROUDLY
SOUTH AFRICAN**



Purpose of this document

This document provides you with an alphabetical list, per region, of water use charges for Government Water Schemes or the irrigation districts as well as the latest Water Resource Management charges. The Department of Water Affairs and Forestry review these charges annually. This document lists the new prices for charges for the 2003/2004 financial year, with effect from 1 April 2003.

Summary of sectoral Water Resource Management Charges per Water Management Area

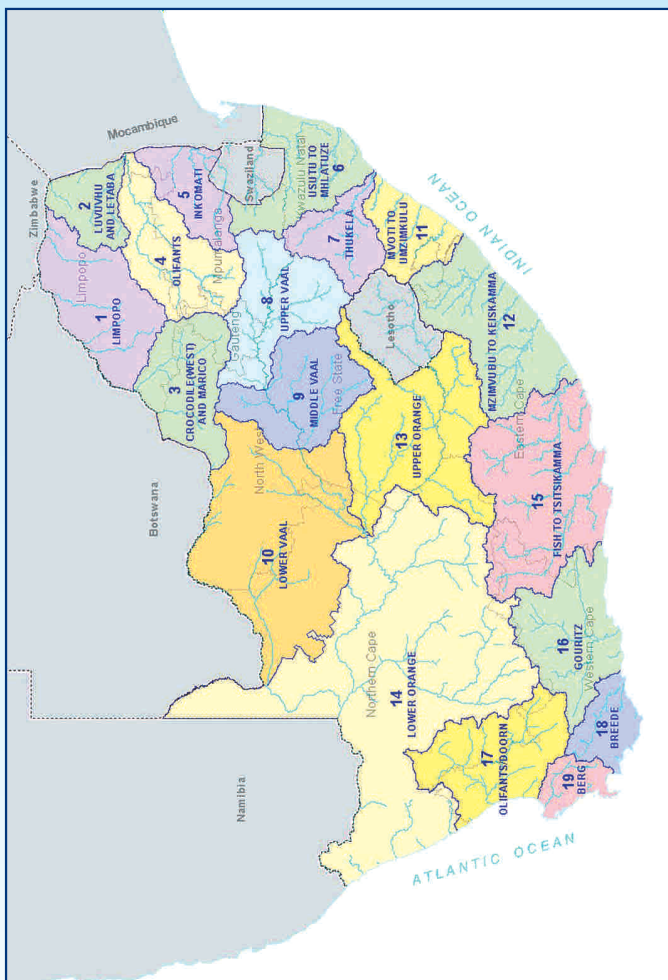
WATER MANAGEMENT AREA		SECTORAL UNIT COST IN C/M ³		
No	Water Management Area	Domestic/ Industrial	Agriculture: Irrigation and watering livestock	Forestry
1	LIMPOPO	0.92	0.58	0.54
2	LUVUVHU AND LETABA	1.33	0.78	0.70
3	CROCODILE (WEST) AND MARICO	0.82	0.63	0.61
4	OLIFANTS	0.89	0.75	0.70
5	INKOMATI	0.85	0.63	0.57
6	USUTU TO MHLATHUZE	0.30	0.30	0.28
7	THUKELA	0.33	0.33	0.31
8	UPPER VAAL	0.96	0.78	0.78
9	MIDDLE VAAL	1.07	1.07	N/A
10	LOWER VAAL	0.59	0.50	N/A
11	MVOTI TO UMZIMKULU	0.81	0.78	0.74
12	MZIMVUBU TO KEISKAMMA	0.85	0.67	0.56
13	UPPER ORANGE	0.38	0.38	N/A
14	LOWER ORANGE	0.49	0.40	N/A
15	FISH TO TSITSIKAMMA	0.89	0.50	0.27
16	GOURITZ	2.36	0.67	0.47
17	OLIFANTS / DOORN	1.77	0.65	0.51
18	BREEDE	2.23	0.58	0.39
19	BERG	3.16	0.70	0.54
	Average	1.11	0.61	0.42

ALL CHARGES EXCLUDE VAT

C/M³ (cent per cubic metre)



Map of the Water Management Areas and provincial borders



How to convert cents per m³ to Rand per hectare

The charges listed in the table for irrigation purposes are provided in cents per m³. Should you wish to convert it to Rand per hectare, please follow the instructions below:

Take the total tariff in cent per m³ and divide it by 100. Take the answer and multiply it with the m³ quota per hectare to get to the Rand per hectare amount. *For example see next page:*



For example:

O & M: 2.70 cent per m³ / 100 = R 0.027 per m³
Depreciation: 1.00 cent per m³ / 100 = R 0.01 per m³
Total Tariff: 3.70 cent per m³ / 100 = R 0.037 per m³

Total tariff R 0.037 per m³ x 3 000 (m³ quota of water per hectare)
= R111 per hectare

Understanding the abbreviations

WMA	Water Management Area A map of the Water Management Areas is printed in this document for easy identification.
m³	Cubic metre
Ha	Hectare
O & M	Operation and Maintenance The charges for this item fund amongst other salaries of the staff involved with the maintenance work and costs involved in maintaining the schemes to ensure smooth operations.
Deprec'n	Depreciation Charges for this item fund the depreciation on equipment as well as the refurbishment thereof. This fund allows for the replacement of equipment to ensure operational systems.
B	Bi-annually
A	Annually
TBA	To be advised
Billing Fre	Billing Frequency





				Tariff/Charges For Irrigation Purposes			Tariff/Charges For Domestic and Industrial use
WMA (refer map)	Foot Notes	Government Water Scheme Name	Scheme Management Parameter	m ³ Quota Per Ha	Tariff - Cent Per Cubic Metre	Billing Fre.	Tariff - Cent Per Cubic Metre
2	● ▲	DAMANI DAM	FROM THE DAM	10000	1.53	B	40.26
2	▲	GROOT LETABA RIVER (EBENEZER DAM)	FROM EBENEZER DAM TO LEPELLE WATER				2.71
2	▲	GROOT LETABA RIVER (EBENEZER DAM)	FROM THE EBENEZER DAM AND THE RIVER UP TO TZANEEN DAM				8.69
2	●	GROOT LETABA RIVER (EBENEZER DAM)	IRRIGATION DISTRICT ZONE I & PART OF ZONE II	6620	1.70	B	
2	● ■	GROOT LETABA RIVER (TZANEEN DAM)	FROM THE DAM AND THE RIVER: IRRIGATION DISTRICT ZONE II	8920	1.49	B	
2	● ■	GROOT LETABA RIVER (TZANEEN DAM)	FROM THE DAM AND THE RIVER: IRRIGATION DISTRICT ZONE III	10900	1.49	B	
2	▲ ■	GROOT LETABA RIVER (TZANEEN DAM)	FROM TZANEEN DAM AND THE RIVER DOWNSTREAM OF THE DAM				9.55
2	● ■	GROOT LETABA RIVER (TZANEEN DAM)	PORT. 11 (PORT OF PORT 7) AVONSHOEK 536 LT (FREE WATER) PUMP DIRECT FROM THE DAM		1.49	B	
2	● ■	GROOT LETABA RIVER (TZANEEN DAM)	PORT. 7 & 9 OF AVONSHOEK (FREE WATER) PUMP DIRECT FROM THE DAM		1.49	B	
2	● ■	GROOT LETABA RIVER (TZANEEN DAM)	REM. EXT. OF PORT. 3 OF MULDERSPANT 499 LT. PUMP DIRECT FROM THE DAM		1.49	B	
1	▲	HOUTRIVIER DAM	FROM THE DAM				57.39
2	● ▲	LUVUVHU RIVER (ALBASINI DAM)	FROM THE CANAL	8400	7.98	B	41.73
2	● ▲	LUVUVHU RIVER (ALBASINI DAM)	FROM THE DAM	8400	4.98	B	8.83
2	● ▲	LUVUVHU RIVER (VONDO DAM)	FROM THE VONDO DAM		3.80	B	23.01
2	▲	MALAMULELE WEIR	LUVUVHU RIVER (NANDONI DAM) WEIRS BELOW NANDONI				TBA
1	▲	MASHASHANE DAM	FROM THE DAM				57.39
2	● ▲	MIDDLE LETABA SYSTEM (MIDDLE LETABA DAM)	MIDDLE LETABA SYSTEM		3.16	B	57.39
2	▲	MIDDLE LETABA SYSTEM (MIDDLE LETABA DAM)	FROM THE DAM				57.39
2	●	MIDDLE LETABA SYSTEM (NSAMI DAM)	FROM THE CANAL SYSTEM		3.16	B	
2	▲	MIDDLE LETABA SYSTEM (NSAMI DAM)	FROM THE DAM				57.39
2	▲	MODJADJI DAM	FROM THE DAM				57.39



				Tariff/Charges For Irrigation Purposes			Tariff/Charges For Domestic and Industrial use
WMA (refer map)	Foot Notes	Government Water Scheme Name	Scheme Management Parameter	m³ Quota Per Ha	Tariff - Cent Per Cubic Metre	Billing Fre.	Tariff - Cent Per Cubic Metre
2	▲	MODJADJI DAM	FROM THE DAM				57.39
1	●	MOGALAKWENA RIVER (GLEN ALPINE DAM)	FROM THE DAM	6200	6.47	B	
1	● ■	MOGOL RIVER (MOKOLO DAM)	CONSUMER(S) WITH SERVITUDE ARRANGEMENT OF "0" TARIFF ALLOCATION OF 10 400 000 CUBIC METRE FROM THE MOGOL RIVER (MOKOLO DAM) GWS		4.71	B	
1	▲ ■	MOGOL RIVER (MOKOLO DAM)	RAW WATER TO ELLISRAS BRICK WORKS FROM THE MOGOL RIVER (MOKOLO DAM) GWS				TBA
1	▲ ■	MOGOL RIVER (MOKOLO DAM)	RAW WATER TO ISCOR FROM THE MOGOL RIVER (MOKOLO DAM) GWS				39.00
1	▲	MUTSHEDZI DAM	FROM THE DAM				57.39
1	●	MUTSHEDZI DAM	FROM THE WEIR & CANAL SYSTEMS		0.00	B	
1	▲	NWANEDI/LUPHEPHE SCHEME	FROM THE DAM				25.88
1	●	NWANEDI/LUPHEPHE SCHEME	FROM THE DAM VIA RIVER ABOVE CROSS DAM	8400	1.84	B	
1	●	NWANEDI/LUPHEPHE SCHEME	FROM THE DAM VIA RIVER BELOW CROSS DAM	8400	1.84	B	
1	▲	NWANEDI/LUPHEPHE SCHEME	FROM THE DAM VIA RIVER, WEIR AND PIPELINE				25.88
1	● ▲	NZHELELE RIVER (NZHELELE DAM)	FROM THE CANAL SYSTEM	8400	4.92	B	
1	●	NZHELELE RIVER (NZHELELE DAM)	FROM THE DAM AND THE RIVER	8400	1.88	B	17.95
2	●	POLITSI RIVER (MAGOEBASKLOOF & VERGELEGEN DAM)	FROM THE DAM TO MIDDLEKOP	6600	3.24	B	
2	● ▲	POLITSI RIVER (MAGOEBASKLOOF & VERGELEGEN DAM)	FROM THE DAM VIA THE CANAL	6600	6.05	B	14.75
1	● ▲	STERK RIVER (DOORNDRAAI DAM)	FROM THE CANAL	7200	8.33	B	52.88
1	▲	STERK RIVER (DOORNDRAAI DAM)	FROM THE DAM				29.09
2	▲	THABINA DAM	FROM THE DAM				57.39
2	▲	THAPANI DAM	FROM THE DAM				57.39

FOOT NOTES



In case where a zero cent tariff is to be applied in respect of volumes smaller or equal to servitude volume, only the tariff to be applied per every one m^3 in excess of the servitude arrangement is reflected



Tariff / charges for domestic and industrial use: to be applied per every one m^3



Tariff / charges for irrigation purposes: to be applied per every one m^3



Tariff / charges for the TCTA: to be applied per every one m^3

Any of the following changes made to the tariffs, incorporated in the relevant brochure, will be updated on the tariff details to be published on the DWAF-website. These include:

a) Additional tariffs

b) Changes to the tariffs incorporated in the brochure:

- Tariffs that are no longer to be applied (declared as OBSOLETE);
- Changes to charges;
- Changes to volume variables.



**For more information, contact your nearest office
of the Department of Water Affairs and Forestry**

**Mpumalanga Regional Office
Mr Johan Van Aswegen
Tel: (013) 755-1674-7**

**Free State Regional Office
Mr Tseliso Ntili
Tel: (051) 430 3134**

**KwaZulu-Natal Regional Office
Mr J.G.G Hansmann
Tel: (031) 336 2700**

**Gauteng Regional Office
Mr Hennie Smit
Tel: (012) 392 1301**

**Limpopo Regional Office
Mr Stephen Musetsho /
Prof Ola Busari
Tel: (015) 290 1217**

**North West Regional Office
Mr Chedwick Lobakeng
Tel: (018) 384 3270-6**

**Eastern Cape Regional Office
Mr Zolile Keke /
Mr Dewald Coetzee
Tel: (043) 643 4352**

**Northern Cape Regional Office
Mr L. J Snyders
Tel: (053) 831 4125**

**Western Cape Regional Office
Mr Rashid Khan
Tel: (021) 950 7100**

