

# Water Use Charges for Government Water Schemes and Water Resource Management Charges

2 0 0 3 / 2 0 0 4

Northern Cape Region



**Your partner in building  
a better life for all**

[www.dwaf.gov.za](http://www.dwaf.gov.za)

**PROUDLY  
SOUTH AFRICAN**



# Purpose of this document

This document provides you with an alphabetical list, per region, of water use charges for Government Water Schemes or the irrigation districts as well as the latest Water Resource Management charges. The Department of Water Affairs and Forestry review these charges annually. This document lists the new prices for charges for the 2003/2004 financial year, with effect from 1 April 2003.

## Summary of sectoral Water Resource Management Charges per Water Management Area

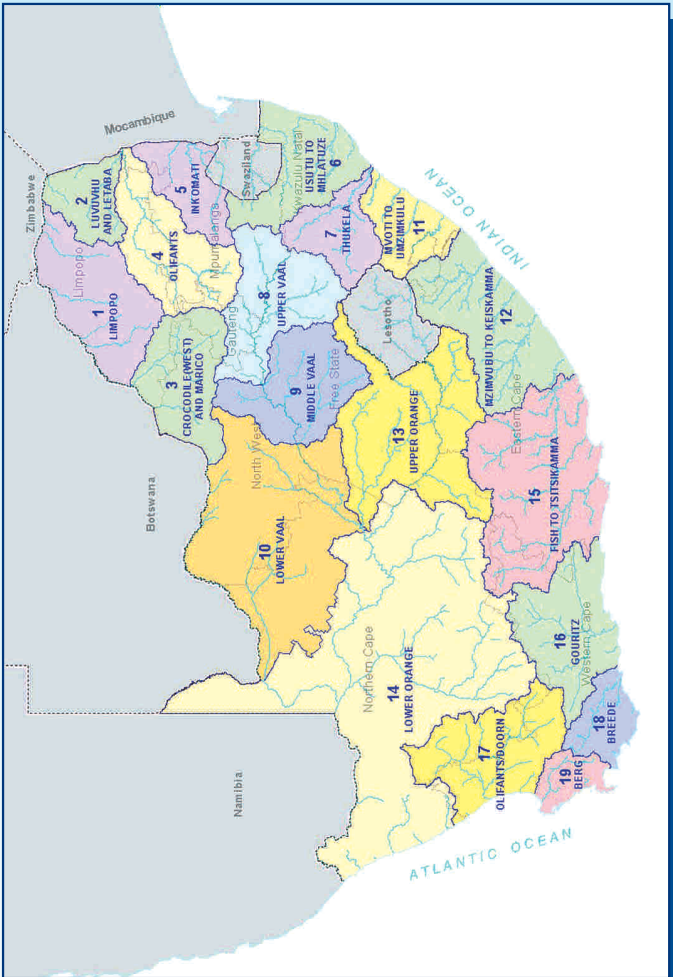
WATER MANAGEMENT AREA		SECTORAL UNIT COST IN C/M <sup>3</sup>		
No	Water Management Area	Domestic/ Industrial	Agriculture: Irrigation and watering livestock	Forestry
1	LIMPOPO	0.92	0.58	0.54
2	LUVUVHU AND LETABA	1.33	0.78	0.70
3	CROCODILE (WEST) AND MARICO	0.82	0.63	0.61
4	OLIFANTS	0.89	0.75	0.70
5	INKOMATI	0.85	0.63	0.57
6	USUTU TO MHLATHUZE	0.30	0.30	0.28
7	THUKELA	0.33	0.33	0.31
8	UPPER VAAL	0.96	0.78	0.78
9	MIDDLE VAAL	1.07	1.07	N/A
10	LOWER VAAL	0.59	0.50	N/A
11	MVOTI TO UMZIMKULU	0.81	0.78	0.74
12	MZIMVUBU TO KEISKAMMA	0.85	0.67	0.56
13	UPPER ORANGE	0.38	0.38	N/A
14	LOWER ORANGE	0.49	0.40	N/A
15	FISH TO TSITSIKAMMA	0.89	0.50	0.27
16	GOURITZ	2.36	0.67	0.47
17	OLIFANTS / DOORN	1.77	0.65	0.51
18	BREDE	2.23	0.58	0.39
19	BERG	3.16	0.70	0.54
	<b>Average</b>	<b>1.11</b>	<b>0.61</b>	<b>0.42</b>

ALL CHARGES EXCLUDE VAT

C/M<sup>3</sup> (cent per cubic metre)



# Map of the Water Management Areas and provincial borders



## How to convert cents per m<sup>3</sup> to Rand per hectare

The charges listed in the table for irrigation purposes are provided in cents per m<sup>3</sup>. Should you wish to convert it to Rand per hectare, please follow the instructions below:

Take the total tariff in cent per m<sup>3</sup> and divide it by 100. Take the answer and multiply it with the m<sup>3</sup> quota per hectare to get to the Rand per hectare amount. *For example see next page:*



## For example:

O & M: 2.70 cent per m<sup>3</sup> / 100 = R 0.027 per m<sup>3</sup>  
Depreciation: 1.00 cent per m<sup>3</sup> / 100 = R 0.01 per m<sup>3</sup>  
Total Tariff: 3.70 cent per m<sup>3</sup> / 100 = R 0.037 per m<sup>3</sup>

Total tariff R 0.037 per m<sup>3</sup> x 3 000 (m<sup>3</sup> quota of water per hectare)  
= R111 per hectare

## Understanding the abbreviations

<b>WMA</b>	Water Management Area A map of the Water Management Areas is printed in this document for easy identification.
<b>m<sup>3</sup></b>	Cubic metre
<b>Ha</b>	Hectare
<b>O &amp; M</b>	Operation and Maintenance The charges for this item fund amongst other salaries of the staff involved with the maintenance work and costs involved in maintaining the schemes to ensure smooth operations.
<b>Deprec'n</b>	Depreciation Charges for this item fund the depreciation on equipment as well as the refurbishment thereof. This fund allows for the replacement of equipment to ensure operational systems.
<b>B</b>	Bi-annually
<b>A</b>	Annually
<b>TBA</b>	To be advised
<b>Billing Fre</b>	Billing Frequency



WMA (refer map)	Foot Notes	Government Water Scheme Name	Scheme Management Parameter	Tariff/Charges For Irrigation Purposes			Tariff/Charges For Domestic and Industrial use	Tariff/Charges For The TCTA
				m <sup>3</sup> Quota Per Ha	Tariff - Cent Per Cubic Metre	Billing Fre.		
10	●	HARTS RIVER (SPITSKOP DAM)	FROM THE DAM	7700	1.00	B		
10	●▲	HARTS RIVER (SPITSKOP DAM)	FROM THE RIVER	7700	1.00	B	10.93	
10	●▲	HARTS RIVER (WENTZEL DAM)	FROM THE DAM	7700	0.52	B	9.07	
14	▲	LOWER ORANGE/NAMAQUALAND	ALEXCOR (RAW WATER ABSTRACTED FROM ANY OF THE DAMS AS WELL AS THE ORANGE RIVER)				4.51	
14	▲	LOWER ORANGE/NAMAQUALAND	KEIMOES BUILDING PREMISES (RAW WATER ABSTRACTED FROM ANY OF THE DAMS AS WELL AS THE ORANGE RIVER)				4.51	
14	▲	LOWER ORANGE/NAMAQUALAND	KEIMOES MUNICIPALITY (RAW WATER ABSTRACTED FROM ANY OF THE DAMS AS WELL AS THE ORANGE RIVER)				4.51	
14	●▲	LOWER ORANGE/NAMAQUALAND	SECTION OF LOWER ORANGE BETWEEN BOEGOEBERG AND THE SEA.		1.03	B	4.51	
14	▲	LOWER ORANGE/NAMAQUALAND	UPINGTON MUNICIPALITY (RAW WATER ABSTRACTED FROM ANY OF THE DAMS AS WELL AS THE ORANGE RIVER)				4.51	
14	▲	MIDDLE ORANGE	DOUGLAS MUNICIPALITY - ORANGE VAAL WUA (DOUGLAS CANALS)				5.10	
14	▲	MIDDLE ORANGE	DOUGLAS PRISON - ORANGE VAAL WUA (DOUGLAS CANALS)				5.10	
14	●▲	MIDDLE ORANGE	LOWER ORANGE BETWEEN DOUGLAS & BOEGOEBERG		1.03	B	4.51	
14	●▲	MIDDLE ORANGE	ORANGE VAAL WUA (DOUGLAS CANALS)		1.03	B	5.10	
14	▲	MIDDLE ORANGE	PRIESKA MUNICIPALITY (RAW WATER ABSTRACTED FROM ANY OF THE DAMS AS WELL AS THE ORANGE RIVER)				4.51	
14	●▲	ORANGE RIVER (BOEGOEBERG DAM)	FROM THE CANAL	15000	1.03	B	6.88	
14	●▲	ORANGE RIVER (BOEGOEBERG DAM)	FROM THE RIVER	15000	1.03	B	6.88	
14	●▲	ORANGE RIVER (KAKAMAS)	FROM THE CANAL	15000	1.03	B	4.51	
14	●▲	ORANGE RIVER (KAKAMAS)	FROM THE RIVER	15000	1.03	B	4.51	
10	○▲	VAAL RIVER (SYSTEM) - LOWER VAAL WEIR TO SCHMITSDRIFT	BARKLEY WEST MUNICIPALITY				26.00	116.10
10	○●▲	VAAL RIVER (SYSTEM) - LOWER VAAL WEIR TO SCHMITSDRIFT	FROM THE RIVER	9140	0.56	B	26.00	116.10
10	○▲	VAAL RIVER (SYSTEM) - LOWER VAAL WEIR TO SCHMITSDRIFT	KIMBERLEY MUNICIPALITY				26.00	116.10



WMA (refer map)	Foot Notes	Government Water Scheme Name	Scheme Management Parameter	Tariff/Charges For Irrigation Purposes		Tariff/Charges For Domestic and Industrial use	Tariff/Charges For The TCTA
				m <sup>3</sup> Quota Per Ha	Tariff - Cent Per Cubic Metre		
10	0▲■	VAAL RIVER (SYSTEM) - LOWER VAAL WEIR TO SCHMITSDRIFT	WARRENTON MUNICIPALITY			26.00	116.10
10	0▲■	VAAL RIVER (SYSTEM) - MIDDLE VAAL BLOEMHOF TO WEIR	BLOEMHOF MUNICIPALITY			26.00	116.10
10	0▲■	VAAL RIVER (SYSTEM) - MIDDLE VAAL BLOEMHOF TO WEIR	CHRISTIANA MUNICIPALITY			26.00	116.10
10	0●▲■	VAAL RIVER (SYSTEM) - MIDDLE VAAL BLOEMHOF TO WEIR	FROM THE RIVER	0.56	B	26.00	116.10
10	0●	VAAL RIVER (VAALHARTS)	EMERGING FARMERS - GANSPAN	0.10	A		
10	0●	VAAL RIVER (VAALHARTS)	EMERGING FARMERS - TAUNG CANAL SYSTEM	0.10	A		
10	0▲●	VAAL RIVER (VAALHARTS)	KLIP DAM - BARKLY CANALS AND VAALHARTS SMALLHOLDINGS	0.62	A	26.00	116.10
10	0▲●	VAAL RIVER (VAALHARTS)	VAALHARTS MAIN, NORTH AND WEST CANALS	0.62	A	26.00	116.10
10	0▲	VAAL-GAMAGARA REGIONAL WATER SUPPLY	CLIFTON TO ROSCOE [PURIFIED WATER FROM VAAL RIVER]			260.07	116.10
10	▲	VAAL-GAMAGARA REGIONAL WATER SUPPLY	FROM SISHEN GROUNDWATER [KALAHARI EAST]			48.12	
10	0▲	VAAL-GAMAGARA REGIONAL WATER SUPPLY	KNEUKEL TO CLIFTON [PURIFIED WATER FROM VAAL RIVER]			176.34	116.10
10	0▲	VAAL-GAMAGARA REGIONAL WATER SUPPLY	PURIFICATION WORKS TO KNEUKEL INCLUDING DELPORTSHOOP [PURIFIED WATER FROM VAAL RIVER]			126.55	116.10
10	0▲	VAAL-GAMAGARA REGIONAL WATER SUPPLY	ROSCOE TO BLACKROCK [PURIFIED WATER FROM VAAL RIVER]			299.21	116.10
10	0▲	VAAL-GAMAGARA REGIONAL WATER SUPPLY	ROSCOE TO OLIFANTSHOEK [PURIFIED WATER FROM VAAL RIVER]			251.48	116.10
10	▲	VAAL-GAMAGARA REGIONAL WATER SUPPLY	SISHEN TO BLACKROCK [GROUNDWATER FROM SISHEN]			0.00	
10	▲	VAAL-GAMAGARA REGIONAL WATER SUPPLY	SISHEN TO OLIFANTSHOEK [GROUNDWATER FROM SISHEN]			0.00	
10	▲	VAAL-GAMAGARA REGIONAL WATER SUPPLY	SUPPLEMENTARY WATER FROM VAAL RIVER IN CASE OF EMERGENCY [KALAHARI EAST]			48.12	



# FOOT NOTES

- In case where a zero cent tariff is to be applied in respect of volumes smaller or equal to servitude volume, only the tariff to be applied per every one  $m^3$  in excess of the servitude arrangement is reflected
- ▲ Tariff / charges for domestic and industrial use: to be applied per every one  $m^3$
- Tariff / charges for irrigation purposes: to be applied per every one  $m^3$
- Tariff / charges for the TCTA: to be applied per every one  $m^3$

Any of the following changes made to the tariffs, incorporated in the relevant brochure, will be updated on the tariff details to be published on the DWAF-website. These include:

- a) Additional tariffs
- b) Changes to the tariffs incorporated in the brochure:
  - Tariffs that are no longer to be applied (declared as OBSOLETE);
  - Changes to charges;
  - Changes to volume variables.



**For more information, contact your nearest office  
of the Department of Water Affairs and Forestry**

**Mpumalanga Regional Office  
Mr Johan Van Aswegen  
Tel: (013) 755-1674-7**

**Free State Regional Office  
Mr Tseliso Ntili  
Tel: (051) 430 3134**

**KwaZulu-Natal Regional Office  
Mr J.G.G Hansmann  
Tel: (031) 336 2700**

**Gauteng Regional Office  
Mr Hennie Smit  
Tel: (012) 392 1301**

**Limpopo Regional Office  
Mr Stephen Musetsho /  
Prof Ola Busari  
Tel: (015) 290 1217**

**North West Regional Office  
Mr Chedwick Lobakeng  
Tel: (018) 384 3270-6**

**Eastern Cape Regional Office  
Mr Zolile Keke /  
Mr Dewald Coetzee  
Tel: (043) 643 4352**

**Northern Cape Regional Office  
Mr L. J Snyders  
Tel: (053) 831 4125**

**Western Cape Regional Office  
Mr Rashid Khan  
Tel: (021) 950 7100**

