

Water Use Charges for Government Water Schemes and Water Resource Management Charges

2 0 0 3 / 2 0 0 4

North West Region



**Your partner in building
a better life for all**

www.dwaf.gov.za

**PROUDLY
SOUTH AFRICAN**



Purpose of this document

This document provides you with an alphabetical list, per region, of water use charges for Government Water Schemes or the irrigation districts as well as the latest Water Resource Management charges. The Department of Water Affairs and Forestry review these charges annually. This document lists the new prices for charges for the 2003/2004 financial year, with effect from 1 April 2003.

Summary of sectoral Water Resource Management Charges per Water Management Area

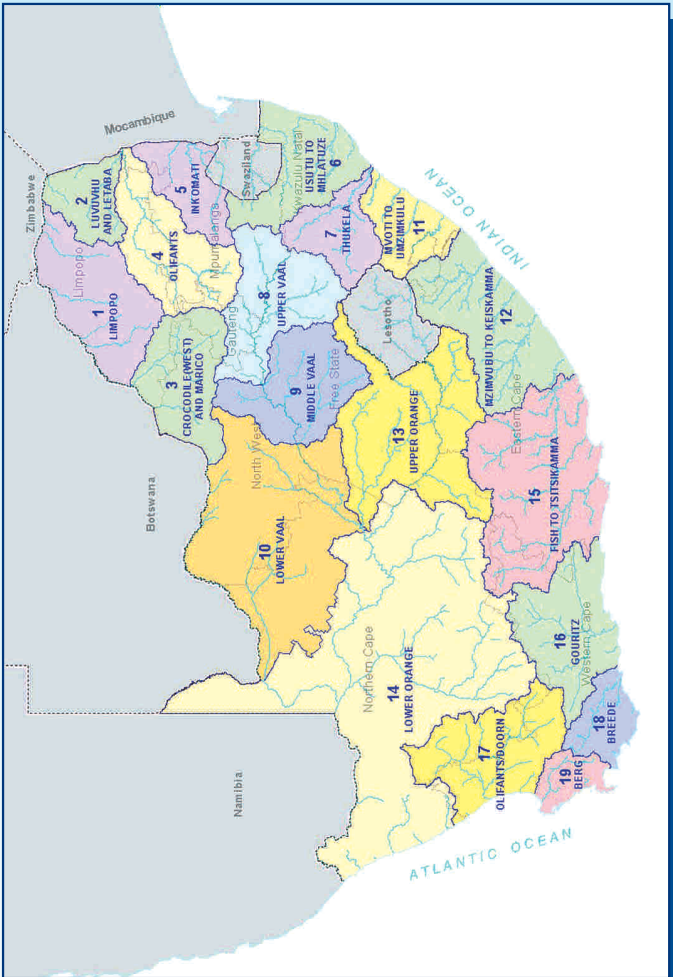
WATER MANAGEMENT AREA		SECTORAL UNIT COST IN C/M ³		
No	Water Management Area	Domestic/ Industrial	Agriculture: Irrigation and watering livestock	Forestry
1	LIMPOPO	0.92	0.58	0.54
2	LUVUVHU AND LETABA	1.33	0.78	0.70
3	CROCODILE (WEST) AND MARICO	0.82	0.63	0.61
4	OLIFANTS	0.89	0.75	0.70
5	INKOMATI	0.85	0.63	0.57
6	USUTU TO MHLATHUZE	0.30	0.30	0.28
7	THUKELA	0.33	0.33	0.31
8	UPPER VAAL	0.96	0.78	0.78
9	MIDDLE VAAL	1.07	1.07	N/A
10	LOWER VAAL	0.59	0.50	N/A
11	MVOTI TO UMZIMKULU	0.81	0.78	0.74
12	MZIMVUBU TO KEISKAMMA	0.85	0.67	0.56
13	UPPER ORANGE	0.38	0.38	N/A
14	LOWER ORANGE	0.49	0.40	N/A
15	FISH TO TSITSIKAMMA	0.89	0.50	0.27
16	GOURITZ	2.36	0.67	0.47
17	OLIFANTS / DOORN	1.77	0.65	0.51
18	BREDEE	2.23	0.58	0.39
19	BERG	3.16	0.70	0.54
	Average	1.11	0.61	0.42

ALL CHARGES EXCLUDE VAT

C/M³ (cent per cubic metre)



Map of the Water Management Areas and provincial borders



How to convert cents per m³ to Rand per hectare

The charges listed in the table for irrigation purposes are provided in cents per m³. Should you wish to convert it to Rand per hectare, please follow the instructions below:

Take the total tariff in cent per m³ and divide it by 100. Take the answer and multiply it with the m³ quota per hectare to get to the Rand per hectare amount. *For example see next page:*



For example:

O & M: 2.70 cent per m³ / 100 = R 0.027 per m³
Depreciation: 1.00 cent per m³ / 100 = R 0.01 per m³
Total Tariff: 3.70 cent per m³ /100 = R 0.037 per m³

Total tariff R 0.037 per m³ x 3 000 (m³ quota of water per hectare)
= R111 per hectare

Understanding the abbreviations

WMA	Water Management Area A map of the Water Management Areas is printed in this document for easy identification.
m³	Cubic metre
Ha	Hectare
O & M	Operation and Maintenance The charges for this item fund amongst other salaries of the staff involved with the maintenance work and costs involved in maintaining the schemes to ensure smooth operations.
Deprec'n	Depreciation Charges for this item fund the depreciation on equipment as well as the refurbishment thereof. This fund allows for the replacement of equipment to ensure operational systems.
B	Bi-annually
A	Annually
TBA	To be advised
Billing Fre	Billing Frequency



WMA (refer map)	Foot Notes	Government Water Scheme Name	Scheme Management Parameter	Tariff/Charges For Irrigation Purposes		Tariff/Charges For Domestic and Industrial use	Tariff/Charges For The TCTA
				m ³ Quota Per Ha	Tariff - Cent Per Cubic Metre		
3	● ▲	CROCODILE RIVER (HARTBEEPOORT DAM)	FROM THE CANAL	6200	0.96	2.43	
3	▲	CROCODILE RIVER (HARTBEEPOORT DAM)	FROM THE CANAL			2.43	
3	● ▲	CROCODILE RIVER (HARTBEEPOORT DAM)	FROM THE DAM	6200	0.96	2.43	
3	▲	CROCODILE RIVER (HARTBEEPOORT DAM)	SEMI-PURIFIED WATER			148.22	
3	●	CROCODILE RIVER (HARTBEEPOORT DAM)	UN-IMPROVED OLD FURROWS		0.00		
3	●	CROCODILE RIVER (NORTHWEST GWS)	BOREHOLES WITHIN REDLINE		0.53		
3	● ▲	CROCODILE RIVER (NORTHWEST GWS)	FROM THE KLIPVOOR DAM		0.53	35.38	
3	● ▲	CROCODILE RIVER (NORTHWEST GWS)	FROM THE ROODEKOPJES DAM		0.53	35.38	
3	● ▲	CROCODILE RIVER (NORTHWEST GWS)	FROM THE VAALKOP DAM AND CANAL		0.53	35.38	
3	● ▲	ELANDS RIVER (LINDLEYSPOORT DAM)	FROM THE CANAL	5300	8.72	15.85	
3	▲	ELANDS RIVER (LINDLEYSPOORT DAM)	FROM THE DAM			5.96	
3	▲	GREATER MAFIKENG WATER SUPPLY (UPPER MOLOPO AND SETUMO DAM).	FROM THE SCHEME			81.18	
3	●	GREATER MAFIKENG WATER SUPPLY (UPPER MOLOPO AND SETUMO DAM).	WATER FROM THE SCHEME TO CC PRETORIUS (WATER FOR IRRIGATION, STOCKWATERING AND DOMESTIC PURPOSES FROM THE MOLOPO EYE)		0.00		
10	●	HARTS RIVER (SPITSKOP DAM)	FROM THE DAM	7700	1.00		
10	● ▲	HARTS RIVER (SPITSKOP DAM)	FROM THE RIVER	7700	1.00	10.93	
10	● ▲	HARTS RIVER (WENTZEL DAM)	FROM THE DAM	7700	0.52	9.07	
3	▲	HEX RIVER (BOSPOORT DAM)	FROM THE SCHEME			50.05	
3	● ▲	KLEIN MARICO RIVER (KLEIN MARICOPOORT DAM)	FROM THE CANAL SYSTEM	5300	9.96	21.97	
3	▲	KLEIN MARICO RIVER (KLEIN MARICOPOORT DAM)	FROM THE DAM (INCLUDING RIVER)			9.33	
3	● ▲	KOSTER RIVER (KOSTER DAM)	FROM THE DAM	5300	5.44	24.08	
3	● ▲	MARICO RIVER (MARICO BOSVELD & KROMMELLENBOOG DAMS)	FROM THE CANAL SYSTEM	5300	9.38	69.69	
3	▲	MARICO RIVER (MARICO BOSVELD & KROMMELLENBOOG DAMS)	FROM THE DAM			18.12	
3	● ■	MARICO RIVER (MOLATEDI DAM)	WATER FROM THE SCHEME TO DERDEPOORT IRRIGATION BOARD.	10295	1.61		



WMA (refer map)	Foot Notes	Government Water Scheme Name	Scheme Management Parameter	Tariff/Charges For Irrigation Purposes		Tariff/Charges For Domestic and Industrial use	Tariff/Charges For The TCTA
				m ³ Quota Per Ha	Tariff - Cent Per Cubic Metre		
3	●▲	PIENAARS RIVER (ROODEPLAAT DAM)	FROM THE CANAL SYSTEM	6500	12.14	18.37	
3	▲	PIENAARS RIVER (ROODEPLAAT DAM)	FROM THE DAM			8.52	
3	●▲	STERKSTROOM RIVER (BUFFELSPOORT DAM)	FROM THE CANAL SYSTEM		7.61	17.31	
3	▲	STERKSTROOM RIVER (BUFFELSPOORT DAM)	FROM THE DAM			4.67	
3	●	STERKSTROOM RIVER (MIDDELKRAAL DAM)	FROM THE SCHEME	6200	1.00		
10	○▲■	VAAL RIVER (SYSTEM) - LOWER VAAL WEIR TO SCHMITSDRIFT	BARKLEY WEST MUNICIPALITY			26.00	116.10
10	○●▲■	VAAL RIVER (SYSTEM) - LOWER VAAL WEIR TO SCHMITSDRIFT	FROM THE RIVER	9140	0.56	26.00	116.10
10	○▲■	VAAL RIVER (SYSTEM) - LOWER VAAL WEIR TO SCHMITSDRIFT	KIMBERLEY MUNICIPALITY			26.00	116.10
10	○▲■	VAAL RIVER (SYSTEM) - LOWER VAAL WEIR TO SCHMITSDRIFT	WARRENTON MUNICIPALITY			26.00	116.10
10	○▲■	VAAL RIVER (SYSTEM) - MIDDLE VAAL BLOEMHOF TO WEIR	BLOEMHOF MUNICIPALITY			26.00	116.10
10	○▲■	VAAL RIVER (SYSTEM) - MIDDLE VAAL BLOEMHOF TO WEIR	CHRISTIANA MUNICIPALITY			26.00	116.10
10	○●▲■	VAAL RIVER (SYSTEM) - MIDDLE VAAL BLOEMHOF TO WEIR	FROM THE RIVER		0.56	26.00	116.10
10	●	VAAL RIVER (VAALHARTS)	EMERGING FARMERS - GANSPAN		0.10		
10	●	VAAL RIVER (VAALHARTS)	EMERGING FARMERS - TAJUNG CANAL SYSTEM		0.10		
10	○▲●	VAAL RIVER (VAALHARTS)	KLIP DAM - BARKLY CANALS AND VAALHARTS SMALLHOLDINGS		0.62	26.00	116.10
10	○▲●	VAAL RIVER (VAALHARTS)	VAALHARTS MAIN, NORTH AND WEST CANALS		0.62	26.00	116.10
10	○▲	VAAL-GAMAGARA REGIONAL WATER SUPPLY	CLIFTON TO ROSCOE [PURIFIED WATER FROM VAAL RIVER]			260.07	116.10
10	▲	VAAL-GAMAGARA REGIONAL WATER SUPPLY	FROM SISHEN GROUNDWATER [KALAHARI EAST]			48.12	
10	○▲	VAAL-GAMAGARA REGIONAL WATER SUPPLY	KNEUKEL TO CLIFTON [PURIFIED WATER FROM VAAL RIVER]			176.34	116.10
10	○▲	VAAL-GAMAGARA REGIONAL WATER SUPPLY	PURIFICATION WORKS TO KNEUKEL INCLUDING DELPORTSHOOP [PURIFIED WATER FROM VAAL RIVER]			126.55	116.10



WMA (refer map)	Foot Notes	Government Water Scheme Name	Scheme Management Parameter	Tariff/Charges For Irrigation Purposes		Tariff/Charges For Domestic and Industrial use	Tariff/Charges For The TCTA
				m ³ Quota Per Ha	Tariff - Cent Per Cubic Metre		
10	○ ▲	VAAL-GAMAGARA REGIONAL WATER SUPPLY	ROSCOE TO BLACKROCK [PURIFIED WATER FROM VAAL RIVER]			299.21	116.10
10	○ ▲	VAAL-GAMAGARA REGIONAL WATER SUPPLY	ROSCOE TO OLIFANTSHOEK [PURIFIED WATER FROM VAAL RIVER]			251.48	116.10
10	▲	VAAL-GAMAGARA REGIONAL WATER SUPPLY	SISHEN TO BLACKROCK [GROUNDWATER FROM SISHEN]			0.00	
10	▲	VAAL-GAMAGARA REGIONAL WATER SUPPLY	SISHEN TO OLIFANTSHOEK [GROUNDWATER FROM SISHEN]			0.00	
10	▲	VAAL-GAMAGARA REGIONAL WATER SUPPLY	SUPPLEMENTARY WATER FROM VAAL RIVER IN CASE OF EMERGENCY [KALAHARI EAST]			48.12	

FOOT NOTES

- In case where a zero cent tariff is to be applied in respect of volumes smaller or equal to servitude volume, only the tariff to be applied per every one m³ in excess of the servitude arrangement is reflected
 - ▲ Tariff / charges for domestic and industrial use: to be applied per every one m³
 - Tariff / charges for irrigation purposes: to be applied per every one m³
 - Tariff / charges for the TCTA: to be applied per every one m³
- Any of the following changes made to the tariffs, incorporated in the relevant brochure, will be updated on the tariff details to be published on the DWAF-website. These include:
- a) Additional tariffs
 - b) Changes to the tariffs incorporated in the brochure:
 - Tariffs that are no longer to be applied (declared as OBSOLETE);
 - Changes to charges;
 - Changes to volume variables.



**For more information, contact your nearest office
of the Department of Water Affairs and Forestry**

**Mpumalanga Regional Office
Mr Johan Van Aswegen
Tel: (013) 755-1674-7**

**Free State Regional Office
Mr Tseliso Ntili
Tel: (051) 430 3134**

**KwaZulu-Natal Regional Office
Mr J.G.G Hansmann
Tel: (031) 336 2700**

**Gauteng Regional Office
Mr Hennie Smit
Tel: (012) 392 1301**

**Limpopo Regional Office
Mr Stephen Musetsho /
Prof Ola Busari
Tel: (015) 290 1217**

**North West Regional Office
Mr Chedwick Lobakeng
Tel: (018) 384 3270-6**

**Eastern Cape Regional Office
Mr Zolile Keke /
Mr Dewald Coetzee
Tel: (043) 643 4352**

**Northern Cape Regional Office
Mr L. J Snyders
Tel: (053) 831 4125**

**Western Cape Regional Office
Mr Rashid Khan
Tel: (021) 950 7100**

