

Water Use Charges for Government Water Schemes and Water Resource Management Charges

2 0 0 3 / 2 0 0 4

Western Cape Region



**Your partner in building
a better life for all**

www.dwaf.gov.za

**PROUDLY
SOUTH AFRICAN**



Purpose of this document

This document provides you with an alphabetical list, per region, of water use charges for Government Water Schemes or the irrigation districts as well as the latest Water Resource Management charges. The Department of Water Affairs and Forestry review these charges annually. This document lists the new prices for charges for the 2003/2004 financial year, with effect from 1 April 2003.

Summary of sectoral Water Resource Management Charges per Water Management Area

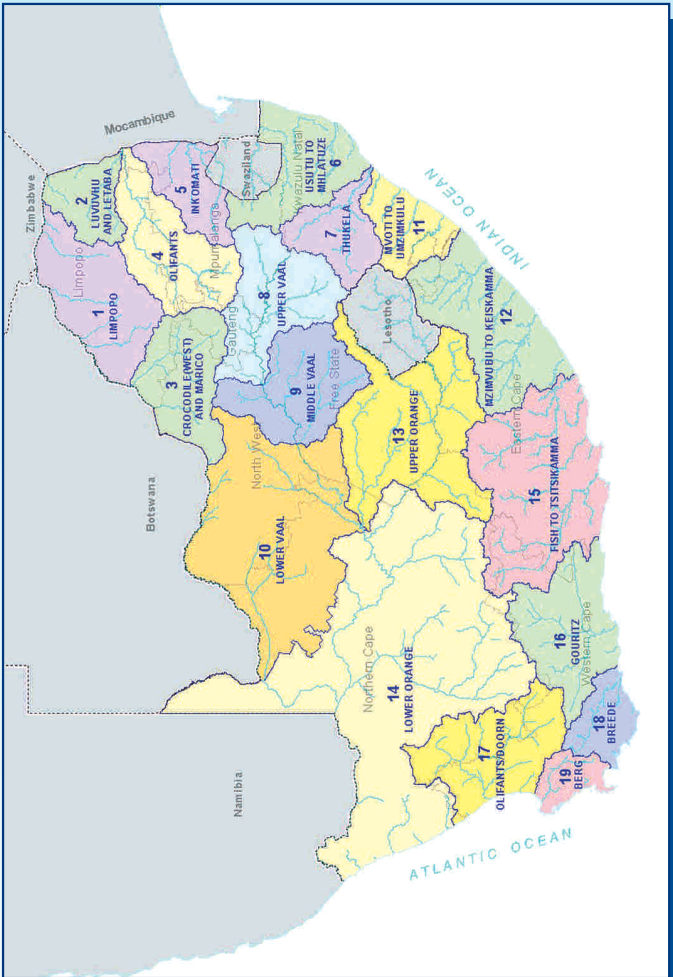
WATER MANAGEMENT AREA		SECTORAL UNIT COST IN C/M ³		
No	Water Management Area	Domestic/ Industrial	Agriculture: Irrigation and watering livestock	Forestry
1	LIMPOPO	0.92	0.58	0.54
2	LUVUVHU AND LETABA	1.33	0.78	0.70
3	CROCODILE (WEST) AND MARICO	0.82	0.63	0.61
4	OLIFANTS	0.89	0.75	0.70
5	INKOMATI	0.85	0.63	0.57
6	USUTU TO MHLATHUZE	0.30	0.30	0.28
7	THUKELA	0.33	0.33	0.31
8	UPPER VAAL	0.96	0.78	0.78
9	MIDDLE VAAL	1.07	1.07	N/A
10	LOWER VAAL	0.59	0.50	N/A
11	MVOTI TO UMZIMKULU	0.81	0.78	0.74
12	MZIMVUBU TO KEISKAMMA	0.85	0.67	0.56
13	UPPER ORANGE	0.38	0.38	N/A
14	LOWER ORANGE	0.49	0.40	N/A
15	FISH TO TSITSIKAMMA	0.89	0.50	0.27
16	GOURITZ	2.36	0.67	0.47
17	OLIFANTS / DOORN	1.77	0.65	0.51
18	BREDEE	2.23	0.58	0.39
19	BERG	3.16	0.70	0.54
	Average	1.11	0.61	0.42

ALL CHARGES EXCLUDE VAT

C/M³ (cent per cubic metre)



Map of the Water Management Areas and provincial borders



How to convert cents per m³ to Rand per hectare

The charges listed in the table for irrigation purposes are provided in cents per m³. Should you wish to convert it to Rand per hectare, please follow the instructions below:

Take the total tariff in cent per m³ and divide it by 100. Take the answer and multiply it with the m³ quota per hectare to get to the Rand per hectare amount. *For example see next page:*



For example:

O & M: 2.70 cent per m³ / 100 = R 0.027 per m³
Depreciation: 1.00 cent per m³ / 100 = R 0.01 per m³
Total Tariff: 3.70 cent per m³ / 100 = R 0.037 per m³

Total tariff R 0.037 per m³ x 3 000 (m³ quota of water per hectare)
= R111 per hectare

Understanding the abbreviations

WMA	Water Management Area A map of the Water Management Areas is printed in this document for easy identification.
m³	Cubic metre
Ha	Hectare
O & M	Operation and Maintenance The charges for this item fund amongst other salaries of the staff involved with the maintenance work and costs involved in maintaining the schemes to ensure smooth operations.
Deprec'n	Depreciation Charges for this item fund the depreciation on equipment as well as the refurbishment thereof. This fund allows for the replacement of equipment to ensure operational systems.
B	Bi-annually
A	Annually
TBA	To be advised
Billing Fre	Billing Frequency



WMA (refer map)		Government Water Scheme Name	Scheme Management Parameter	Tariff/Charges For Irrigation Purposes		Tariff/Charges For Domestic and Industrial use		
Foot Notes				m ³ Quota Per Ha	Tariff - Cent Per Cubic Metre	Billing Fre.	Volume Variable	Tariff - Cent Per Cubic Metre
19	■	BERG RIVER (VOELVLEI & MISVERSTAND DAMS)	BOREHOLE (SALDANHA UNDERGROUND)				Tariff to be applied per every one cubic metre.	7.81
19	■	BERG RIVER (VOELVLEI & MISVERSTAND DAMS)	FROM THE DAM				Tariff to be applied per every one cubic metre.	6.86
19	●	BERG RIVER (VOELVLEI & MISVERSTAND DAMS)	FROM TWENTY-FOUR RIVERS CANAL TO THE IRRIGATION BOARD	8500	1.28	B		
19	●	BERG RIVER (VOELVLEI & MISVERSTAND DAMS)	IRRIGATION FROM BERG RIVER DOWNSTREAM OF THE VOELVLEI DAM	3000	3.70	B	Tariff to be applied per every one cubic metre.	6.86
19	■	BERG RIVER (VOELVLEI & MISVERSTAND DAMS)	RAW WATER FROM MISVERSTAND DAM				Tariff to be applied per every one cubic metre.	7.81
19	■	BERG RIVER (VOELVLEI & MISVERSTAND DAMS)	RAW WATER FROM THE DAM TO PRETORIA PORTLAND CEMENT CO LTD				Tariff to be applied per every one cubic metre.	6.86
19	■	BERG RIVER (VOELVLEI & MISVERSTAND DAMS)	RAW WATER FROM VOELVLEI DAM TO CAPE TOWN MUNICIPALITY				Tariff to be applied per every one cubic metre.	23.17
19	■	BERG RIVER (VOELVLEI & MISVERSTAND DAMS)	RAW WATER FROM VOELVLEI DAM TO PIKETBERG MUNICIPALITY				Tariff to be applied per every one cubic metre.	6.86
16	●	BRAND RIVER (MIERTJESKRAAL DAM)	FROM THE DAM	7000	4.19	B	Tariff to be applied per every one cubic metre.	58.29
18	■	BREDE RIVER (GREATER BRANDVLEI AND KWAGGASKLOOF DAMS) Tariff/charges for irrigation purposes: To be applied for volume smaller or equal to 944.00000,00 m ³	BREDE RIVER CONSERVATION BOARD		0.51	B		
18	■	BREDE RIVER (GREATER BRANDVLEI AND KWAGGASKLOOF DAMS) Tariff/charges for irrigation purposes: To be applied for volume greater or equal to 944.00000,00 m ³	BREDE RIVER CONSERVATION BOARD		1.51	B		
18	■	BREDE RIVER (GREATER BRANDVLEI AND KWAGGASKLOOF DAMS)	BREDE RIVER CONSERVATION BOARD				Tariff to be applied per every one cubic metre.	16.19
18	■	BREDE RIVER (GREATER BRANDVLEI AND KWAGGASKLOOF DAMS)	FROM ANY OF THE DAMS TO BRANDVLEI WINE CELLARS				Tariff to be applied per every one cubic metre.	16.19
18	●	BREDE RIVER (GREATER BRANDVLEI AND KWAGGASKLOOF DAMS)	PURCHASED WATER RIGHTS & OTHER BOARDS (EXCLUDING BREDE RIVER CONSERVATION BOARD)		1.51	B		

WMA (refer map)	Foot Notes	Government Water Scheme Name	Scheme Management Parameter	Tariff/Charges For Irrigation Purposes		Tariff/Charges For Domestic and Industrial use		
				m ³ Quota Per Ha	Tariff - Cent Per Cubic Metre	Billing Fre.	Volume Variable	Tariff - Cent Per Cubic Metre
16	●	BUFFALO RIVER (FLORISKRAAL DAM)	C VAN WYK PREFERENTIAL RIGHT	7620	1.21	B		
16	●	BUFFALO RIVER (FLORISKRAAL DAM)	FROM THE SCHEME	7620	1.21	B	Tariff to be applied per every one m ³	6.39
18	●	BUFFELJAGTS RIVER (BUFFELJAGTS DAM)	FROM THE DAM	6100	1.32	B	Tariff to be applied per every one m ³	9.57
18		BUFFELJAGTS RIVER (BUFFELJAGTS DAM)	FROM THE DAM TO GOVT DEPT'S: BUFFELSJAGTS PRISON				Tariff to be applied per every one m ³	9.57
16	●	CORDIERS RIVER (OUKLOOF DAM)	FROM THE DAM	9000	3.02	B	Tariff to be applied per every one m ³	4.84
16	●	DUIVENHOKS RIVER (DUIVENHOKS DAM)	FROM DUIVENHOKS RIVER (DUIVENHOKS DAM)	6000	0.84	B	Tariff to be applied per every one m ³	2.50
18	●	ELANDS RIVER (ELANDSKLOOF DAM)	EXISTING DEVELOPMENT – FROM THE ELANDS RIVER (ELANDS-KLOOF DAM)	6860	0.07	B		
18		ELANDS RIVER (ELANDSKLOOF DAM)	FROM THE DISTRIBUTION SYSTEM (CANAL & PIPELINE) – FROM THE ELANDS RIVER (ELANDS-KLOOF DAM)				Tariff to be applied per every one m ³	37.29
18	●	ELANDS RIVER (ELANDSKLOOF DAM)	NEW DEVELOPMENT (DAM COSTS INCLUDED) – FROM THE ELANDS RIVER (ELANDS-KLOOF DAM)	6860	1.22	B		
18	●	ELANDS RIVER (ELANDSKLOOF DAM)	RAW WATER FROM THE DAM				Tariff to be applied per every one m ³	11.64
18	●	ELANDS RIVER (ELANDSKLOOF DAM)	TO VILLIERSDORP CO-OPERATIVE LTD - FROM THE DISTRIBUTION SYSTEM (CANAL & PIPELINE) – FROM THE ELANDS RIVER (ELANDS-KLOOF DAM)				Tariff to be applied per every one m ³	37.29
18	●	ELANDS RIVER (ELANDSKLOOF DAM)	TO VILLIERSDORP MUNICIPALITY FROM THE DISTRIBUTION SYSTEM (CANAL & PIPELINE) – FROM THE ELANDS RIVER (ELANDS-KLOOF DAM)				Tariff to be applied per every one m ³	37.29
16		GAMKA RIVER (BEAUFORT WEST DAM)	FROM THE DAM				Tariff to be applied per every one m ³	48.95
16	●	GAMKA RIVER (GAMKAPOORT DAM)	FROM THE DAM	7900	2.83	B	Tariff to be applied per every one m ³	11.66
16	●	GOUKOU RIVER (GROOTBOSBERG DAM)	FROM THE DAM	7000	0.76	B	Tariff to be applied per every one m ³	18.95
16	●	HARTENBOS RIVER (HARTBEEKUIJL DAM)	FROM THE DAM	6000	2.09	B	Tariff to be applied per every one m ³	10.24
16	●	KAMANASSIE RIVER (KAMANASSIE DAM)	FROM THE SCHEME	6500	1.09	B		
18	●	KEISIES RIVER (PIETERSFONTEIN DAM)	FROM THE SCHEME	2500	2.29	B		
18	●	KINGNA RIVER (POORTJIESKLOOF DAM)	FROM THE SCHEME	4500	4.55	B		
18	●	KONINGS RIVER (KLIPBERG DAM)	FROM THE SCHEME	7500	1.75	B	Tariff to be applied per every one m ³	2.02
16	●	KORENTE-VETTE RIVER (KORENTE-VETTE DAM)	FROM THE CANAL	7000	0.63	B	Tariff to be applied per every one m ³	5.12

WMA (refer map)	Foot Notes	Government Water Scheme Name	Scheme Management Parameter	Tariff/Charges For Irrigation Purposes			Tariff/Charges For Domestic and Industrial use	
				m ³ Quota Per Ha	Tariff - Cent Per Cubic Metre	Billing Fre.	Volume Variable	Tariff - Cent Per Cubic Metre
16		KORENTE-VETTE RIVER (KORENTE-VETTE DAM)	FROM THE DAM				Tariff to be applied per every one cubic metre.	2.33
16	●	LEEU RIVER (LEEU-GAMKA DAM)	FROM THE SCHEME	11000	1.65	B		
16		MOSSEL BAY - KLIPHEUWEL DAM	FROM THE SCHEME				Tariff to be applied per every one cubic metre.	67.36
16	■	MOSSEL BAY - WOLLWEDANS DAM	FROM THE MOSSEL BAY - WOLLWEDANS DAM (BOLTONS & MOSSREF EXCLUDED)				Tariff to be applied per every one cubic metre.	67.36
16	■	MOSSEL BAY - WOLLWEDANS DAM	TO BOLTONS FROM THE MOSSEL BAY - WOLLWEDANS DAM				Tariff to be applied per every one cubic metre.	67.36
16	■	MOSSEL BAY - WOLLWEDANS DAM	TO MOSSREF FROM THE MOSSEL BAY - WOLLWEDANS DAM				Tariff to be applied per every one cubic metre.	67.36
16	●	OLIFANTS RIVER (STOMPDRIFT DAM)	FROM SCHEME FOR STAGE 1	5300	1.18	B		
16	●	OLIFANTS RIVER (STOMPDRIFT DAM)	FROM SCHEME FOR STAGE 2	2360	1.29	B		
16	●	OLIFANTS RIVER (STOMPDRIFT DAM)	FROM SCHEME FOR STAGE 3	660	1.37	B		
16		OLIFANTS RIVER (STOMPDRIFT DAM)	FROM THE CANAL				Tariff to be applied per every one cubic metre.	34.41
16		OLIFANTS RIVER (STOMPDRIFT DAM)	FROM THE DAM				Tariff to be applied per every one cubic metre.	6.17
17	●	OLIFANTS RIVER (VAN RHYNSDORP - CLANWILLIAM DAM)	RIVER ABSTRACTION BETWEEN CLANWILLIAM AND BULSHOEK DAM	12200	1.23	B		
17	●	OLIFANTS RIVER (VAN RHYNSDORP CLANWILLIAM DAM)	FROM SCHEME	12200	1.51	B		Tariff to be applied per every one cubic metre.
17	●	OLIFANTS RIVER VANRHYNSDORP (BULSHOEK DAM)	FROM THE SCHEME	12200	2.44	B		Tariff to be applied per every one cubic metre.
17	●	OLIFANTS RIVER VANRHYNSDORP (BULSHOEK DAM)	LOWER OLIFANTS RIVER IRRIGATION BOARD - EBENEZER SETTLEMENT	12200	2.44	B		
19		PALMIET RIVER (ROCKVIEW & KOGELBERG DAMS) - [WMA BERG]	FROM DAM TO CAPE TOWN METROPOLITAN COUNCIL				Tariff to be applied per every one cubic metre.	23.17
18		PALMIET RIVER (ROCKVIEW & KOGELBERG DAMS) - [WMA BREEDE]	FROM DAM TO ESCOM				Tariff to be applied per every one cubic metre.	0.00

WMA (refer map)	Foot Notes	Government Water Scheme Name	Scheme Management Parameter	Tariff/Charges For Irrigation Purposes			Tariff/Charges For Domestic and Industrial use	
				m ³ Quota Per Ha	Tariff - Cent Per Cubic Metre	Billing Fre.	Volume Variable	Tariff - Cent Per Cubic Metre
18	●	PALMIET RIVER (ROCKVIEW & KOEGLBERG DAMS) - [WMA BREEDE]	PALMIET SCHEME TO BEUKES FARM	6000	10.52	B		
19	● ■	RIVIERONDEREND-BERG RIVER (THEEWATERSKLOOF DAM AND JONKERSHOEK TUNNEL SYSTEM) - [WMA BERG]	AT FRANSSCHHOEK, DASBOS & STELLENBOSCH TUNNEL		5.51	B	Tariff to be applied per every one cubic metre.	23.17
19	● ■	RIVIERONDEREND-BERG RIVER (THEEWATERSKLOOF DAM AND JONKERSHOEK TUNNEL SYSTEM) - [WMA BERG]	AT FRANSSCHHOEK, DASBOS & STELLENBOSCH TUNNEL - COMPENSATION RELEASE		5.51	B		
19	● ■	RIVIERONDEREND-BERG RIVER (THEEWATERSKLOOF DAM AND JONKERSHOEK TUNNEL SYSTEM) - [WMA BERG]	AT FRANSSCHHOEK, DASBOS & STELLENBOSCH TUNNEL OUTLETS TO BERG RIVER - SUB DISTRICT 1		5.51	B		
19	● ■	RIVIERONDEREND-BERG RIVER (THEEWATERSKLOOF DAM AND JONKERSHOEK TUNNEL SYSTEM) - [WMA BERG]	AT FRANSSCHHOEK, DASBOS & STELLENBOSCH TUNNEL OUTLETS TO BERG RIVER - SUB DISTRICT 2		5.51	B		
19	● ■	RIVIERONDEREND-BERG RIVER (THEEWATERSKLOOF DAM AND JONKERSHOEK TUNNEL SYSTEM) - [WMA BERG]	AT FRANSSCHHOEK, DASBOS & STELLENBOSCH TUNNEL OUTLETS TO BERG RIVER - SUB DISTRICT 3		5.51	B		
19	● ■	RIVIERONDEREND-BERG RIVER (THEEWATERSKLOOF DAM AND JONKERSHOEK TUNNEL SYSTEM) - [WMA BERG]	AT FRANSSCHHOEK, DASBOS & STELLENBOSCH TUNNEL OUTLETS TO OTHER CONSUMERS				Tariff to be applied per every one cubic metre.	25.10
19	● ■	RIVIERONDEREND-BERG RIVER (THEEWATERSKLOOF DAM AND JONKERSHOEK TUNNEL SYSTEM) - [WMA BERG]	AT FRANSSCHHOEK, DASBOS & STELLENBOSCH TUNNEL OUTLETS TO PAARL MUNICIPALITY - SUMMER				Tariff to be applied per every one cubic metre.	25.10
19	● ■	RIVIERONDEREND-BERG RIVER (THEEWATERSKLOOF DAM AND JONKERSHOEK TUNNEL SYSTEM) - [WMA BERG]	AT FRANSSCHHOEK, DASBOS & STELLENBOSCH TUNNEL OUTLETS TO PAARL MUNICIPALITY - WINTER				Tariff to be applied per every one cubic metre.	25.10
18	● ■	RIVIERONDEREND-BERG RIVER (THEEWATERSKLOOF DAM AND JONKERSHOEK TUNNEL SYSTEM) - [WMA BREEDE]	ABSTRACTIONS FROM DAM		1.54	B	Tariff to be applied per every one cubic metre.	5.10
18	● ■	RIVIERONDEREND-BERG RIVER (THEEWATERSKLOOF DAM AND JONKERSHOEK TUNNEL SYSTEM) - [WMA BREEDE]	AT THEEWATERSKLOOF OUTLET AND FROM THE RIVER		1.54	B		15.99

WMA (refer map)		Government Water Scheme Name	Scheme Management Parameter	Tariff/Charges For Irrigation Purposes		Tariff/Charges For Domestic and Industrial use		
Foot Notes				m ³ Quota Per Ha	Tariff - Cent Per Cubic Metre	Billing Fre.	Volume Variable	Tariff - Cent Per Cubic Metre
18	● ■	SANDDRIFT RIVER (ROODE ELSBERG AND LAKENVALLEI DAMS)	FROM THE SCHEME	6000	1.66	B	Tariff to be applied per every one cubic metre.	
18	● ■	SANDDRIFT RIVER (ROODE ELSBERG AND LAKENVALLEI DAMS)	SCHEME DEPT. OF AGRICULTURE - EXPERIMENTAL FARM	5100	1.66	B		
18	● ■	SANDDRIFT RIVER (ROODE ELSBERG AND LAKENVALLEI DAMS)	SCHEME ORIGINAL SCHEDULING	1500	1.66	B		
18	● ■	SANDDRIFT RIVER (ROODE ELSBERG AND LAKENVALLEI DAMS)	SCHEME PURCHASED WATER RIGHTS	6500	1.66	B		
17		SANDVELD (WEST COAST) GOVERNMENT WATER SCHEME	BUSINESS CONCERNS, INDUSTRIES AND PUBLIC INSTITUTIONS (BULK SUPPLY TO TOWNS)				Tariff to be applied for volume smaller or equal to 20.000m ³ .	253.96
17		SANDVELD (WEST COAST) GOVERNMENT WATER SCHEME	BUSINESS CONCERNS, INDUSTRIES AND PUBLIC INSTITUTIONS (BULK SUPPLY TO TOWNS)				Tariff to be applied for volume greater or equal to 20.001m ³ [i.e. in excess of 20.000m ³].	436.14
17		SANDVELD (WEST COAST) GOVERNMENT WATER SCHEME	BUSINESS CONCERNS, INDUSTRIES AND PUBLIC INSTITUTIONS (BULK SUPPLY TO TOWNS)				Tariff to be applied for volume greater or equal to 30.001m ³ [i.e. in excess of 30.000m ³].	514.81
17		SANDVELD (WEST COAST) GOVERNMENT WATER SCHEME	PRIVATE HOUSEHOLDS AND CONSUMERS (BULK SUPPLY TO TOWNS)				Tariff to be applied for volume smaller or equal to 6.000m ³	72.95
17		SANDVELD (WEST COAST) GOVERNMENT WATER SCHEME	PRIVATE HOUSEHOLDS AND CONSUMERS (BULK SUPPLY TO TOWNS)				Tariff to be applied for volume greater or equal to 6.001m ³ [i.e. in excess of 6.000m ³].	253.96
17		SANDVELD (WEST COAST) GOVERNMENT WATER SCHEME	PRIVATE HOUSEHOLDS AND CONSUMERS (BULK SUPPLY TO TOWNS)				Tariff to be applied for volume greater or equal to 20.001m ³ [i.e. in excess of 20.000m ³	436.16
17		SANDVELD (WEST COAST) GOVERNMENT WATER SCHEME	PRIVATE HOUSEHOLDS AND CONSUMERS (BULK SUPPLY TO TOWNS)				Tariff to be applied for volume greater or equal to 30.001m ³ .	514.81
17		SANDVELD (WEST COAST) GOVERNMENT WATER SCHEME	RAW WATER TO RURAL AREAS				Tariff to be applied for volume smaller or equal to 30.000m ³	56.53

WMA (refer map)		Government Water Scheme Name		Scheme Management Parameter		Tariff/Charges For Irrigation Purposes			Tariff/Charges For Domestic and Industrial use	
Foot Notes						m ³ Quota Per Ha	Tariff - Cent Per Cubic Metre	Billing Fre.	Volume Variable	Tariff - Cent Per Cubic Metre
17		SANDVELD (WEST COAST) GOVERNMENT WATER SCHEME	RAW WATER TO RURAL AREAS						Tariff to be applied for volume greater or equal to 30.000m ³ [i.e. in excess of 30.000m ³].	514.81
17		SOUTH NAMAKWALAND	BUSINESS CONCERNS, INDUSTRIES AND PUBLIC INSTITUTIONS (BULK SUPPLY TO TOWNS)						Tariff to be applied for volume smaller or equal to 20.000m ³	253.96
17		SOUTH NAMAKWALAND	BUSINESS CONCERNS, INDUSTRIES AND PUBLIC INSTITUTIONS (BULK SUPPLY TO TOWNS)						Tariff to be applied for volume greater or equal to 30.001m ³ [i.e. in excess of 30.000m ³].	1724.62
17		SOUTH NAMAKWALAND	BUSINESS CONCERNS, INDUSTRIES AND PUBLIC INSTITUTIONS (BULK SUPPLY TO TOWNS)						Tariff to be applied for volume greater or equal to 20.001m ³ [i.e. in excess of 20.000m ³].	989.29
17		SOUTH NAMAKWALAND	PRIVATE HOUSEHOLDS AND CONSUMERS (BULK SUPPLY TO TOWNS)						Tariff to be applied for volume smaller or equal to 6.000m ³	72.95
17		SOUTH NAMAKWALAND	PRIVATE HOUSEHOLDS AND CONSUMERS (BULK SUPPLY TO TOWNS)						Tariff to be applied for volume greater or equal to 6.001m ³ [i.e. in excess of 6.000m ³].	253.96
17		SOUTH NAMAKWALAND	PRIVATE HOUSEHOLDS AND CONSUMERS (BULK SUPPLY TO TOWNS)						Tariff to be applied for volume greater or equal to 20.001m ³ [i.e. in excess of 20.000m ³	989.29
17		SOUTH NAMAKWALAND	PRIVATE HOUSEHOLDS AND CONSUMERS (BULK SUPPLY TO TOWNS)						Tariff to be applied for volume greater or equal to 30.001m ³ [i.e. in excess of 30.000m ³	1724.62
17		SOUTH NAMAKWALAND	RAW WATER TO RURAL AREAS						Tariff to be applied for volume smaller or equal to 30.001m ³ .	65.01
17		SOUTH NAMAKWALAND	RAW WATER TO RURAL AREAS						Tariff to be applied for volume greater or equal to 30.001m ³ .	426.65
18	●	VALSCH RIVER (BEN ETIVE DAM)	FROM THE SCHEME			6000	0.79	B		

FOOT NOTES

- In case where a zero cent tariff is to be applied in respect of volumes smaller or equal to servitude volume, only the tariff to be applied per every one m^3 in excess of the servitude arrangement is reflected.
- ▲ Tariff / charges for domestic and industrial use: to be applied per every one m^3 .
- Tariff / charges for irrigation purposes: to be applied per every one m^3 .
- Tariff / charges for the TCTA: to be applied per every one m^3 .

Any of the following changes made to the tariffs, incorporated in the relevant brochure, will be updated on the tariff details to be published on the DWAF-website. These include:

- a) Additional tariffs
- b) Changes to the tariffs incorporated in the brochure:
 - Tariffs that are no longer to be applied (declared as OBSOLETE);
 - Changes to charges;
 - Changes to volume variables.



**For more information, contact your nearest office
of the Department of Water Affairs and Forestry**

**Mpumalanga Regional Office
Mr Johan Van Aswegen
Tel: (013) 755-1674-7**

**Free State Regional Office
Mr Tseliso Ntili
Tel: (051) 430 3134**

**KwaZulu-Natal Regional Office
Mr J.G.G Hansmann
Tel: (031) 336 2700**

**Gauteng Regional Office
Mr Hennie Smit
Tel: (012) 392 1301**

**Limpopo Regional Office
Mr Stephen Musetsho /
Prof Ola Busari
Tel: (015) 290 1217**

**North West Regional Office
Mr Chedwick Lobakeng
Tel: (018) 384 3270-6**

**Eastern Cape Regional Office
Mr Zolile Keke /
Mr Dewald Coetzee
Tel: (043) 643 4352**

**Northern Cape Regional Office
Mr L. J Snyders
Tel: (053) 831 4125**

**Western Cape Regional Office
Mr Rashid Khan
Tel: (021) 950 7100**

