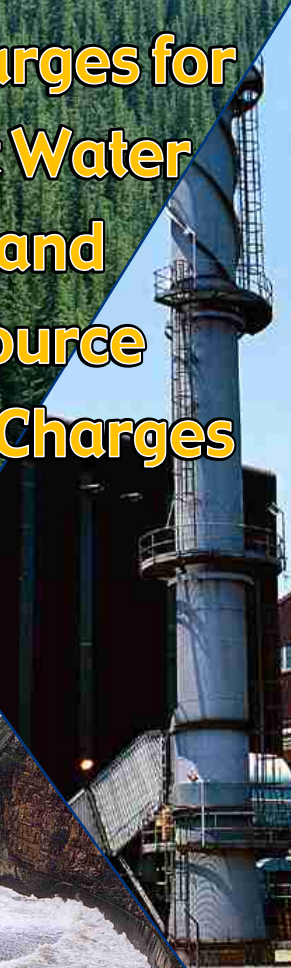
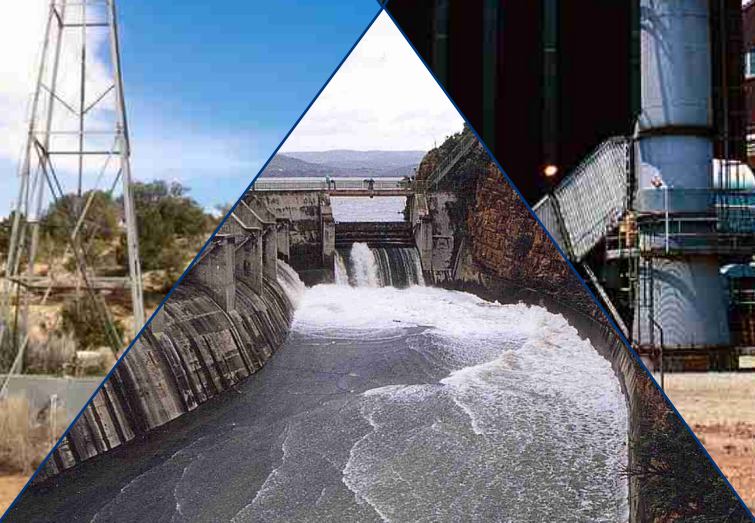


# Water Use Charges for Government Water Schemes and Water Resource Management Charges



2004/2005  
Gauteng Region



*Your partner in building  
a better life for all*

[www.dwaf.gov.za](http://www.dwaf.gov.za)

PROUDLY  
SOUTH AFRICAN



# Preface

Included in this brochure are schedules containing Water Resource Management and Water Consumptive charges that will come into effect from 1 April 2004.

Before announcing these charges a series of consultations were held by the top management of the Department of Water Affairs and Forestry (DWAf), with key national stakeholders including amongst others SALGA, SAAWU, TAU, NAFU, Agri-SA and Forestry SA.

The consultation meetings led to a better understanding of the practical implementation of the Department's Raw Water Pricing Strategy and the drivers necessitating charge increases. The charges set out in these tables have been amended with respect to a number of issues raised at the consultation meetings, but do not represent a consensus position of stakeholders and DWAf. The charges have been determined by DWAf in accordance with the mandate of the National Water Act and the Raw Water Pricing Strategy.

In order to improve the process of further consultations, it was agreed that future discussions on water charge increases will be held well in advance of announcement dates. This will enable stakeholders to properly consult with their members and make meaningful recommendations to the Department.

It was further agreed that DWAf will, during the 2004/5 financial year, initiate a process of reviewing the Raw Water Pricing Strategy. It is intended that the review of this strategy will be completed in time for the 2006/7 charges to be based on the revised strategy. Because of the requirements for public consultation it is not possible to finalise the revision in time to influence the 2005/6 charges which will, therefore, still be calculated under the existing strategy.



Mike Muller  
Director-General

DEPARTMENT OF WATER AFFAIRS AND FORESTRY

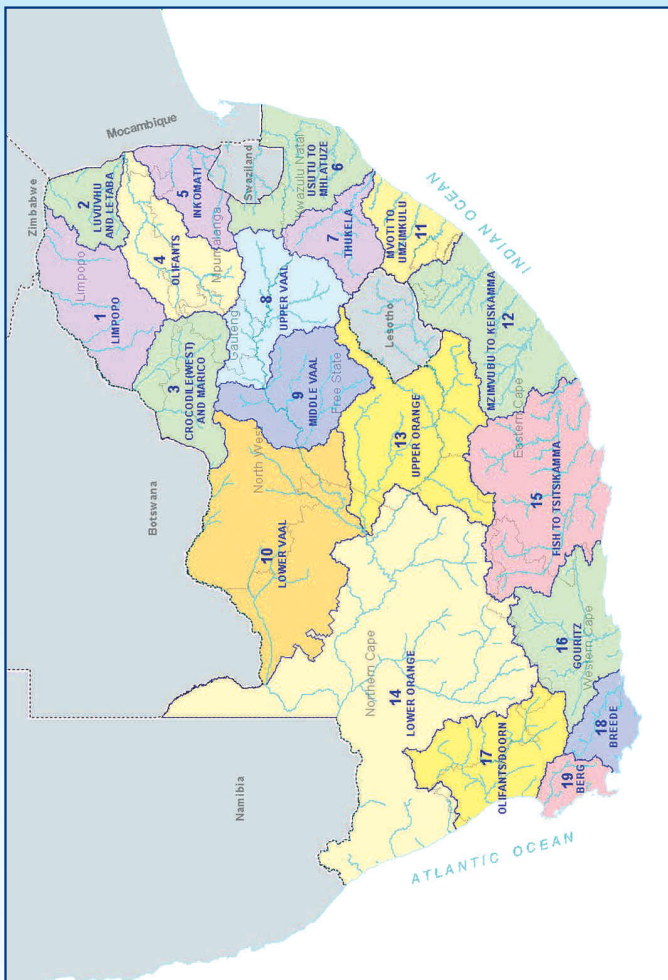
# Summary of sectoral Water Resource Management Charges per Water Management Area

WATER MANAGEMENT AREA		SECTORAL UNIT COST IN C/M <sup>3</sup>		
No	Water Management Area	Domestic/ Industrial	Agriculture: Irrigation and watering livestock	Forestry
1	LIMPOPO	1.23	0.89	0.83
2	LUVUVHU AND LETABA	1.60	1.07	0.98
3	CROCODILE (W) & MARICO	0.85	0.70	0.68
4	OLIFANTS	0.89	0.75	0.70
5	INKOMATI	0.85	0.63	0.57
6	USUTU TO MHLATHUZE	0.42	0.42	0.41
7	THUKELA	0.34	0.34	0.33
8	UPPER VAAL	1.30	0.79	0.79
9	MIDDLE VAAL	0.98	0.80	N/A
10	LOWER VAAL	0.69	0.56	N/A
11	MVOTI TO UMZIMKULU	0.91	0.87	0.84
12	MZIMVUBU TO KEISKAMMA	0.97	0.67	0.56
13	UPPER ORANGE	0.38	0.38	N/A
14	LOWER ORANGE	0.62	0.47	N/A
15	FISH TO TSITSIKAMMA	1.45	0.61	0.38
16	GOURITZ	2.11	0.72	0.56
17	OLIFANTS / DOORN	1.16	0.70	0.64
18	BREEDE	2.64	0.64	0.41
19	BERG	3.25	0.76	0.61
	<b>Average</b>	<b>1.19</b>	<b>0.67</b>	<b>0.61</b>

ALL CHARGES EXCLUDE VAT

C/M<sup>3</sup> (cent per cubic metre)

# Map of the Water Management Areas and provincial borders



## How to convert cents per m<sup>3</sup> to Rand per hectare

The charges listed in the table for irrigation purposes are provided in cents per m<sup>3</sup>. Should you wish to convert it to Rand per hectare, please follow the instructions below:

Take the total charge in cent per m<sup>3</sup> and divide it by 100. Take the answer and multiply it with the m<sup>3</sup> quota per hectare to get to the Rand per hectare amount. *For example see next page:*

### For example:

Total Charge: 3.70 cent per m<sup>3</sup> /100 = R 0.037 per m<sup>3</sup>

Total charge R 0.037 per m<sup>3</sup> x 3 000 (m<sup>3</sup> quota of water per hectare) = R111 per hectare

WMA (refer map)		Foot Notes	Government Water Scheme Name	Scheme Management Parameter	Charges For Irrigation Purposes			Charges For Domestic and Industrial use	Charges For The TCTA
					m <sup>3</sup> Quota Per Ha	Charge - Cent Per Cubic Metre	Billing Fre.	Charge - Cent Per Cubic Metre	Charge - Cent Per Cubic Metre
4			BLYDE RIVER (BLYDERIVERS-POORT DAM)	FROM THE BLYDERIVERSPOORT DAM TO LEPELLE WATER				3.22	
4			BLYDE RIVER (BLYDERIVERS-POORT DAM)	FROM THE BLYDERIVERSPOORT DAM TO OTHER USERS				17.76	
4			BLYDE RIVER (BLYDERIVERS-POORT DAM)	WATER THROUGH NEW PIPELINE AND PUMPED FROM RIVER OUT OF DAM STORAGE		1.18	B	17.76	
4			BRONKHORSTSPRUIT DAM	FROM DAM		6.50	B	9.39	
4	SERV		BRONKHORSTSPRUIT DAM	FROM DAM MAGALIES WATER				9.39	
7	SERV		BUSHMANS RIVER GWS (WAGENDRIFT DAM)	RAW WATER FROM BUSHMANS RIVER (WAGENDRIFT DAM) TO MASONITE				10.05	
7	SERV		BUSHMANS RIVER GWS (WAGENDRIFT DAM)	RAW WATER FROM BUSHMANS RIVER (WAGENDRIFT DAM) TO MUNICIPALITY OF ESCOURT		2.30	B	10.05	
7	SERV		BUSHMANS RIVER GWS (WAGENDRIFT DAM)	RAW WATER FROM BUSHMANS RIVER (WAGENDRIFT DAM) TO NESTLE				10.05	
7			BUSHMANS RIVER GWS (WAGENDRIFT DAM)	SCHEME	7150	2.30	B	10.05	
3			CROCODILE RIVER (HARTBEEESPOORT DAM)	DAM	6200	0.98	B	2.67	
3			CROCODILE RIVER (HARTBEEESPOORT DAM)	FROM THE CANAL SYSTEM	6200	0.98	B	2.67	
5			CROCODILE RIVER (KWENA DAM)	RAW WATER FROM CROCODILE RIVER (KWENA DAM) DOWNSTREAM OF KROKODILPOORT (INCLUDING KROKODILPOORT MALELANE CANALS)		0.61	B		
5			CROCODILE RIVER (KWENA DAM)	RAW WATER FROM CROCODILE RIVER (KWENA DAM) TO DEPARTMENT OF AGRICULTURE		0.61	B		
5	SERV		CROCODILE RIVER (KWENA DAM)	RAW WATER FROM CROCODILE RIVER (KWENA DAM) TO FORMER KANGWANE GOVERNMENT SERVICES				11.61	
5	SERV		CROCODILE RIVER (KWENA DAM)	RAW WATER FROM CROCODILE RIVER (KWENA DAM) TO LOCAL AREA COMMITTEE OF HECTORSPRUIT				11.61	

WMA (refer map)	Foot Notes	Government Water Scheme Name	Scheme Management Parameter	Charges For Irrigation Purposes			Charges For Domestic and Industrial use	Charges For The TCTA
				m <sup>3</sup> Quota Per Ha	Charge - Cent Per Cubic Metre	Billing Fre.		
5	SERV	CROCODILE RIVER (KWENA DAM)	RAW WATER FROM CROCODILE RIVER (KWENA DAM) TO MUNICIPALITY OF MALELANE				11.61	
5	SERV	CROCODILE RIVER (KWENA DAM)	RAW WATER FROM CROCODILE RIVER (KWENA DAM) TO MUNICIPALITY OF NELSPRUIT				11.61	
5		CROCODILE RIVER (KWENA DAM)	RAW WATER FROM CROCODILE RIVER (KWENA DAM) TO OTHER CONSUMERS				11.61	
5	SERV	CROCODILE RIVER (KWENA DAM)	RAW WATER FROM CROCODILE RIVER (KWENA DAM) TO TVL SUGAR CORPORATION LIMITED				11.61	
5		CROCODILE RIVER (KWENA DAM)	RAW WATER FROM CROCODILE RIVER (KWENA DAM) UPSTREAM OF KROKODILPOORT		0.61	B		
3		CROCODILE RIVER (NORTHWEST) GWS	BOREHOLES WITHIN REDLINE		0.63	B		
3		CROCODILE RIVER (NORTHWEST) GWS	FROM THE KLIPVOOR DAM		0.63	B		
3		CROCODILE RIVER (NORTHWEST) GWS	FROM THE ROODEKOPJES DAM		0.63	B	38.84	
3		CROCODILE RIVER (NORTHWEST) GWS	FROM THE VAALKOP DAM AND CANAL		0.63	B	38.84	
3		ELANDS RIVER (LINDLEYSPOORT DAM)	FROM THE CANAL	5300	9.31	B	17.43	
3		ELANDS RIVER (LINDLEYSPOORT DAM)	FROM THE DAM				6.56	
4		ELANDS RIVER (RHENOSTERKOP DAM)	ELANDS RIVER (RHENOSTERKOP DAM)				23.23	
4		ELANDS RIVER (RUST DE WINTER DAM)	FROM DEPARTMENTAL PURIFICATION WORKS FOR SETTLEMENT				90.48	
4		ELANDS RIVER (RUST DE WINTER DAM)	FROM THE CANAL/PIPELINE	7000	7.28	B	40.50	
4		ELANDS RIVER (RUST DE WINTER DAM)	FROM THE DAM			B	8.48	
3		GREATER MAFIKENG WATER SUPPLY (UPPER MOLOPO AND SETUMO DAM)	SCHEME (NO OTHER DIFFERENTIATORS HAVE BEEN IDENTIFIED)				89.30	
4		GROOT DWARS RIVER (DER BROCHEN DAM)	DAM	6700	1.73	B	18.02	
3		HEX RIVER (BOSPOORT DAM)	SCHEME (NO OTHER DIFFERENTIATORS HAVE BEEN IDENTIFIED)				55.06	

WMA (refer map)		Foot Notes	Government Water Scheme Name	Scheme Management Parameter	Charges For Irrigation Purposes			Charges For Domestic and Industrial use	Charges For The TCTA
					m <sup>3</sup> Quota Per Ha	Charge - Cent Per Cubic Metre	Billing Fre.	Charge - Cent Per Cubic Metre	Charge - Cent Per Cubic Metre
6			HLUHLUWE RIVER GWS (HLUHLUWE DAM)	SCHEME	7320	7.04	B	19.38	
4			KLASERIE RIVER (KLASERIE DAM)	FROM THE DAM AND THE RIVER	9900	1.30	B		
3			KLEIN MARICO RIVER (KLEIN MARICOPOORT DAM)	FROM THE CANAL SYSTEM	5300	10.71	B	23.96	
3			KLEIN MARICO RIVER (KLEIN MARICOPOORT DAM)	FROM THE DAM (INCLUDING RIVER)				10.26	
5			KOMATI RIVER (DRIEKOPPIES & MAGUGA DAMS)	FROM THE DAM: COMMERCIAL USERS	0	2.18	B		
5			KOMATI RIVER (DRIEKOPPIES & MAGUGA DAMS)	FROM THE DAM: RESOURCE POOR FARMERS	0	2.18	B		
5			KOMATI RIVER (VYGEBOOM AND NOOITGEDACHT DAMS)	DUVHA TO HENDRINA PIPELINE				99.81	
5			KOMATI RIVER (VYGEBOOM AND NOOITGEDACHT DAMS)	FROM GLADDESPRUIT CANAL	0	3.30	B		
5			KOMATI RIVER (VYGEBOOM AND NOOITGEDACHT DAMS)	FROM THE DAM	7810	0.67	B		
5			KOMATI RIVER (VYGEBOOM AND NOOITGEDACHT DAMS)	UPPER KOMATI (I.E. ESKOM)				9.09	
3			KOSTER RIVER (KOSTER DAM)	FROM THE DAM	5300	6.13	B	26.49	
4			MAPOCHSGRONDEN (TONTELDOOS AND VLUGKRAAL DAMS)	CANAL	5000	6.36	B	51.15	
3			MARICO RIVER (MARICO BOSVELD AND KROMELLENBOOG DAMS)	FROM THE CANAL SYSTEM	5300	9.68	B		

WMA (refer map)	Foot Notes	Government Water Scheme Name	Scheme Management Parameter	Charges For Irrigation Purposes			Charges For Domestic and Industrial use	Charges For The TCTA
				m <sup>3</sup> Quota Per Ha	Charge - Cent Per Cubic Metre	Billing Fre.		
3		MARICO RIVER (MARICO BOSVELD AND KROMELLENBOOG DAMS)	FROM THE DAM				19.94	
3	SERV	MARICO RIVER (MOLATEDI DAM)	WATER FROM THE SCHEME TO DERDEPOORT IRRIGATION BOARD	10295	1.61	B		
7		MNYAMVUBU RIVER GWS (CRAIGIE BURN DAM)	SCHEME	7600	5.39	B		
8		MOOI RIVER (BOSKOP AND KLERKSKRAAL DAMS)	CANAL	7700	6.48	B		
8	SERV	MOOI RIVER (BOSKOP AND KLERKSKRAAL DAMS)	FROM THE CANAL SYSTEM TO POTCHEFSTROOM		43.82	B		
8		MOOI RIVER (BOSKOP AND KLERKSKRAAL DAMS)	RIVER	7700	1.84	B		
7		NGAGANE RIVER GWS (NTSHINGWAYO DAM)	SCHEME		4.88	B	18.01	
4		OHRIKSTAD RIVER (OHRIKSTAD DAM)	FROM THE DAM AND THE RIVER	7000	3.45	B		
4		OLIFANTS RIVER (FLAG BOSHIELO DAM)	DAM		2.58	B	25.45	
4		OLIFANTS RIVER (LOSKOP DAM)	RAW WATER FROM DAM	7700	0.94	B	8.16	
4	SERV	OLIFANTS RIVER (LOSKOP DAM)	RAW WATER FROM DAM TO FORMER LEBOWA FARMS	7700	0.94	B		
4		OLIFANTS RIVER (LOSKOP DAM)	RAW WATER FROM DAM TO HEREFORD IRRIGATION BOARD	7700	0.94	B		
4	SERV	OLIFANTS RIVER (LOSKOP DAM)	RAW WATER FROM DAM TO OLIFANTS RIVER I/BOARD	7700	0.94	B		
4	SERV	OLIFANTS RIVER (LOSKOP DAM)	RAW WATER FROM DAM TO PREVIOUS SAOT FARMS	7700	0.94	B		
4	SERV	OLIFANTS RIVER (LOSKOP DAM)	RAW WATER TO MIDDELBURG MUNICIPALITY CONSIDERED AS FROM LOSKOP				8.16	
3		PIENAARS RIVER (ROODEPLAAT DAM)	FROM THE CANAL SYSTEM	6500	12.64	B	20.20	



WMA (refer map)		Government Water Scheme Name		Scheme Management Parameter		Charges For Irrigation Purposes			Charges For Domestic and Industrial use	Charges For The TCTA
Foot Notes				m <sup>3</sup> Quota Per Ha	Charge - Cent Per Cubic Metre	Billing Fre.		Charge - Cent Per Cubic Metre		Charge - Cent Per Cubic Metre
3		PIENAARS RIVER (ROODEPLAAT DAM)						9.37		
6		PONGOLA RIVER GWS (PONGOLAPOORT DAM AND MAKATINI FLATS)					1.83	B	14.63	
6		PONGOLA RIVER GWS (PONGOLAPOORT DAM AND MAKATINI FLATS)					1.47	B		
6		PONGOLA RIVER GWS (WEIR AND CANALS)					0.00	B	0.00	
9		RHENOSTER RIVER (KOPPIES DAM)			6100		17.59	B		
9		RHENOSTER RIVER (KOPPIES DAM)			6100		4.20	B	15.68	
5		SAND RIVER (WITKLIP DAM)					6.46	B	16.89	
5	SERV	SAND RIVER (WITKLIP DAM)					6.46	B		
5	SERV	SAND RIVER (WITKLIP DAM)					6.46	B		
9		SAND-VET RIVER (ERFENIS AND ALLEMANS-KRAAL DAM)			7200		1.66	B	7.09	
9		SAND-VET RIVER (ERFENIS AND ALLEMANS-KRAAL DAM)			7200		10.12	B	21.02	
9		SAND-VET RIVER (ERFENIS AND ALLEMANS-KRAAL DAM)			7200		7.97	B		
9	SERV	SAND-VET RIVER (ERFENIS AND ALLEMANS-KRAAL DAM)							21.02	
9	SERV	SAND-VET RIVER (ERFENIS AND ALLEMANS-KRAAL DAM)							21.02	
9		SCHOONSPRUIT (ELANDSKUIL AND RIETSPRUIT DAMS)			7700		7.66	B	32.00	
7		SLANG RIVER GWS (ZAAIHOEK DAM) - [WMA THUKELA]							25.61	

WMA (refer map)	Foot Notes	Government Water Scheme Name	Scheme Management Parameter	Charges For Irrigation Purposes			Charges For Domestic and Industrial use	Charges For The TCTA
				m <sup>3</sup> Quota Per Ha	Charge - Cent Per Cubic Metre	Billing Fre.		
8		SLANG RIVER GWS (ZAAIHOEK DAM) - [WMA UPPER VAAL]	FROM THE PIPELINES AND THE AQUEDUCT TO GROOTDRAAI DAM				28.34	Charge - Cent Per Cubic Metre 122.40
3		STERKSTROOM (BUFFELSPOORT DAM)	FROM THE CANAL SYSTEM		7.98	B	5.13	
3		STERKSTROOM (BUFFELSPOORT DAM)	FROM THE DAM					
3		STERKSTROOM (MIDDELKRAAL DAM)	SCHEME	6200	1.00	B		
7		TUGELA RIVER GWS (SPIOENKOP DAM)	SCHEME		4.75	B	10.15	
6		TUGELA-MHLATUZE GWS	FROM THE SCHEME TO ALL CONSUMERS (EXCLUDED DOMESTIC AND INDUSTRIAL USE)		2.37	B		
6		TUGELA-MHLATUZE GWS	FROM THE SCHEME TO MHLATUZE WATER FOR DOMESTIC AND INDUSTRIAL USE				24.94	
6		TUGELA-MHLATUZE GWS	FROM THE SCHEME TO OTHER NON-SERVITUDE CONSUMERS (EXCLUDING MHLATUZE WATER) FOR DOMESTIC AND INDUSTRIAL USE				44.94	
7		TUGELA-VAAL GWS [WMA - THUKELA]	FROM SYSTEM UP TO AND INCLUDING THE JAGERSRUST BALANCING DAM [TUGELA-VAAL RIVER AQUADUCT]				9.56	
8		TUGELA-VAAL GWS [WMA - UPPER VAAL]	FROM STERKFONTein DAM [TUGELA-VAAL RIVER AQUADUCT]				98.62	
6		USUTU RIVER GWS (JERICHO, MORGENSTOND AND WESTOE DAMS)	CAMDEN [ESKOM]				55.48	
6		USUTU RIVER GWS (JERICHO, MORGENSTOND AND WESTOE DAMS)	CAMDEN LILLIEPUT				215.49	
6		USUTU RIVER GWS (JERICHO, MORGENSTOND AND WESTOE DAMS)	CAMDEN/KRIEL PIPELINE				172.48	
6		USUTU RIVER GWS (JERICHO, MORGENSTOND AND WESTOE DAMS)	FROM THE DAMS: (JERICHO, MORGENSTOND AND WESTOE DAMS)				120.80	

WMA (refer map)	Foot Notes	Government Water Scheme Name	Scheme Management Parameter	Charges For Irrigation Purposes			Charges For Domestic and Industrial use	Charges For The TCTA
				m <sup>3</sup> Quota Per Ha	Charge - Cent Per Cubic Metre	Billing Fre.		
6		USUTU RIVER GWS (JERICHO, MORGENSTOND AND WESTOE DAMS)	FROM THE JERICHO/CAMDEN PIPELINE				120.80	
6		USUTU RIVER GWS (JERICHO, MORGENSTOND AND WESTOE DAMS)	KENDAL (ESKOM)				179.61	
6		USUTU RIVER GWS (JERICHO, MORGENSTOND AND WESTOE DAMS)	KHUTALA/KENDAL PIPELINE				352.25	
6		USUTU RIVER GWS (JERICHO, MORGENSTOND AND WESTOE DAMS)	KRIEL (ESKOM)				69.07	
8		USUTU-VAAL RIVER (PHASE 1) (GROOTDRAAI DAM - [WMA UPPER VAAL])	GROOTDRAAI TO KNOPPIESFONTEIN				71.02	122.40
8		USUTU-VAAL RIVER (PHASE 1) (GROOTDRAAI DAM - [WMA UPPER VAAL])	GROOTDRAAI TO TUTUKA				70.25	122.40
8		USUTU-VAAL RIVER (PHASE 1) (GROOTDRAAI DAM - [WMA UPPER VAAL])	KNOPPIESFONTEIN TO BOSSIESPRUIT				76.86	122.40
8		USUTU-VAAL RIVER (PHASE 1) (GROOTDRAAI DAM - [WMA UPPER VAAL])	KNOPPIESFONTEIN TO TRICHARDSFONTEIN				113.16	122.40
8		USUTU-VAAL RIVER (PHASE 1) (GROOTDRAAI DAM - [WMA UPPER VAAL])	MATLA ESKOM				28.34	122.40
8		USUTU-VAAL RIVER (PHASE 1) (GROOTDRAAI DAM - [WMA UPPER VAAL])	NAAUWPOORT TO DUUVHA				325.47	122.40
8		USUTU-VAAL RIVER (PHASE 1) (GROOTDRAAI DAM - [WMA UPPER VAAL])	PUMPED FROM TRICHARDSFONTEIN DAM TO OTHER USERS				190.89	122.40
8		USUTU-VAAL RIVER (PHASE 1) (GROOTDRAAI DAM - [WMA UPPER VAAL])	PURIFICATION WORKS				87.70	122.40
8		USUTU-VAAL RIVER (PHASE 1) (GROOTDRAAI DAM - [WMA UPPER VAAL])	RIETFONTEIN TO MATLA				148.56	122.40

WMA (refer map)	Foot Notes	Government Water Scheme Name	Scheme Management Parameter	Charges For Irrigation Purposes			Charges For Domestic and Industrial use	Charges For The TCTA
				m <sup>3</sup> Quota Per Ha	Charge - Cent Per Cubic Metre	Billing Fre.		
8		USUTU-VAAL RIVER (PHASE 1) (GROOTDRAAI DAM - [WMA UPPER VAAL])	TUTUKA ESKOM				28.34	122.40
4	SERV	USUTU-VAAL RIVER GWS (PHASE 1) (GROOTDRAAI DAM - [WMA OLIFANTS])	DOUGLAS COLLIERY (ALBION) (OLIFANTS WMA)				160.27	122.40
4	SERV	USUTU-VAAL RIVER GWS (PHASE 1) (GROOTDRAAI DAM - [WMA OLIFANTS])	DOUGLAS COLLIERY (ALBION) (OLIFANTS WMA)				160.27	122.40
4	SERV	USUTU-VAAL RIVER GWS (PHASE 1) (GROOTDRAAI DAM - [WMA OLIFANTS])	DOUGLAS COLLIERY (VAN DYKSDRIFT) (OLIFANTS WMA)				160.27	122.40
4	SERV	USUTU-VAAL RIVER GWS (PHASE 1) (GROOTDRAAI DAM - [WMA OLIFANTS])	DOUGLAS COLLIERY (WOLWEKRANS) (OLIFANTS WMA)				160.27	122.40
4	SERV	USUTU-VAAL RIVER GWS (PHASE 1) (GROOTDRAAI DAM - [WMA OLIFANTS])	KLEINKOPJE MINE (OLIFANTS WMA)				160.27	122.40
4		USUTU-VAAL RIVER GWS (PHASE 1) (GROOTDRAAI DAM) - [WMA OLIFANTS]	TRICHARFDSFONTEIN TO WITBANK DAM				160.27	122.40
6		USUTU-VAAL RIVER GWS (PHASE 2) (HEYSHOPE DAM)	FROM THE DAM				6.29	
6		USUTU-VAAL RIVER GWS (PHASE 2) (HEYSHOPE DAM)	GEELHOUTBOOM TO GROOTDRAAI DAM				52.81	
6		USUTU-VAAL RIVER GWS (PHASE 2) (HEYSHOPE DAM)	HEYSHOPE TO DRIEFONTEIN				23.61	
6		USUTU-VAAL RIVER GWS (PHASE 2) (HEYSHOPE DAM)	HEYSHOPE TO GEELHOUTBOOM				27.36	
9	SERV	VAAL RIVER (SYSTEM) - FREE STATE REGION	ANGOLD VAAL RIVER				28.30	122.40
9		VAAL RIVER (SYSTEM) - FREE STATE REGION	USERS IN THE MIDDLE VAAL WMA				28.30	122.40

WMA (refer map)	Foot Notes	Government Water Scheme Name	Scheme Management Parameter	Charges For Irrigation Purposes			Charges For Domestic and Industrial use	Charges For The TCTA
				m <sup>3</sup> Quota Per Ha	Charge - Cent Per Cubic Metre	Billing Fre.		
8	SERV	VAAL RIVER (SYSTEM) UPPER VAAL	A. GREEN [VAAL RIVER DEV SCHEME]				28.30	122.40
8	SERV	VAAL RIVER (SYSTEM) UPPER VAAL	AELIONS CLUB [VAAL RIVER DEV SCHEME]				28.30	122.40
8	SERV	VAAL RIVER (SYSTEM) UPPER VAAL	BALFOUR MUNICIPALITY [VAAL RIVER DEV SCHEME]				28.30	122.40
8	SERV	VAAL RIVER (SYSTEM) UPPER VAAL	BETHAL MUN - A				28.30	122.40
8	SERV	VAAL RIVER (SYSTEM) UPPER VAAL	BETHAL MUN - B				28.30	122.40
8	SERV	VAAL RIVER (SYSTEM) UPPER VAAL	BETHAL MUN - C				28.30	122.40
8	SERV	VAAL RIVER (SYSTEM) UPPER VAAL	BETHLEHEM MUN - APPLE ORCHIDS				28.30	122.40
8	SERV	VAAL RIVER (SYSTEM) UPPER VAAL	BETHLEHEM MUN - SAULSPOORT DAM 1				28.30	122.40
8	SERV	VAAL RIVER (SYSTEM) UPPER VAAL	BETHLEHEM MUN - SAULSPOORT DAM 2				28.30	122.40
8	SERV	VAAL RIVER (SYSTEM) UPPER VAAL	BETHLEHEM MUN - UNICO FEEDLOT				28.30	122.40
8	SERV	VAAL RIVER (SYSTEM) UPPER VAAL	DENEYSVILLE METRO				28.30	122.40
8	SERV	VAAL RIVER (SYSTEM) UPPER VAAL	DIHLABENG LOCAL MUNICIPALITY: BETHLEHEM				28.30	122.40
8	SERV	VAAL RIVER (SYSTEM) UPPER VAAL	DIHLABENG MUN [REITZ]				28.30	122.40
8	SERV	VAAL RIVER (SYSTEM) UPPER VAAL	EARLY BIRD FARM [VAAL]				28.30	122.40
8	SERV	VAAL RIVER (SYSTEM) UPPER VAAL	ERASMUS J.P.				28.30	122.40
8	SERV	VAAL RIVER (SYSTEM) UPPER VAAL	ERIKA KWEKERY [VAAL RIVER DEV SCHEME]				28.30	122.40
8	SERV	VAAL RIVER (SYSTEM) UPPER VAAL	ERMELO MUN - GOLF				28.30	122.40
8	SERV	VAAL RIVER (SYSTEM) UPPER VAAL	ERMELO MUN - MINE				28.30	122.40
8	SERV	VAAL RIVER (SYSTEM) UPPER VAAL	ERMELO MUN - TOWN				28.30	122.40
8	SERV	VAAL RIVER (SYSTEM) UPPER VAAL	F. SUPRA (E.P. ROSSOU) [VAAL RIVER DEV SCHEME]				28.30	122.40
8	SERV	VAAL RIVER (SYSTEM) UPPER VAAL	FRANKFORT A MUNICIPALITY				28.30	122.40
8	SERV	VAAL RIVER (SYSTEM) UPPER VAAL	FRANKFORT B MUNICIPALITY				28.30	122.40
8	SERV	VAAL RIVER (SYSTEM) UPPER VAAL	G. COLEMAN [VAAL RIVER DEV SCHEME]				28.30	122.40

WMA (refer map)	Foot Notes	Government Water Scheme Name	Scheme Management Parameter	Charges For Irrigation Purposes			Charges For Domestic and Industrial use	Charges For The TCTA
				m <sup>3</sup> Quota Per Ha	Charge - Cent Per Cubic Metre	Billing Fre.		
8	SERV	VAAL RIVER (SYSTEM) UPPER VAAL	HARRISMITH MUN - BERGSIG BOTANICAL				28.30	122.40
8	SERV	VAAL RIVER (SYSTEM) UPPER VAAL	HARRISMITH MUN - FEEDLOTS				28.30	122.40
8	SERV	VAAL RIVER (SYSTEM) UPPER VAAL	HARRISMITH MUN - GRAVITATIONAL LINE				28.30	122.40
8	SERV	VAAL RIVER (SYSTEM) UPPER VAAL	HARRISMITH MUN - NUWEJAARSPRUIT				28.30	122.40
8	SERV	VAAL RIVER (SYSTEM) UPPER VAAL	HARRISMITH MUN - TOWNSHIP				28.30	122.40
8	SERV	VAAL RIVER (SYSTEM) UPPER VAAL	HARRISMITH MUN - TSHIANE				28.30	122.40
8	SERV	VAAL RIVER (SYSTEM) UPPER VAAL	HEILBRON MUN				28.30	122.40
8	SERV	VAAL RIVER (SYSTEM) UPPER VAAL	INDICOT FARMING [VAAL RIVER DEV SCHEME]				28.30	122.40
8	SERV	VAAL RIVER (SYSTEM) UPPER VAAL	KARAN ESTATES [VAAL RIVER DEV SCHEME]				28.30	122.40
8	SERV	VAAL RIVER (SYSTEM) UPPER VAAL	LAMBERTI M.J.				28.30	122.40
8	SERV	VAAL RIVER (SYSTEM) UPPER VAAL	METSIMAHOLO LOCAL MUNICIPALITY (ORANJEVILLE)				28.30	122.40
8	SERV	VAAL RIVER (SYSTEM) UPPER VAAL	MORGENZON MUN				28.30	122.40
8	SERV	VAAL RIVER (SYSTEM) UPPER VAAL	MSUKALIGWA MUNICIPALITY; BREYTON LOCAL AUTHORITY				28.30	122.40
8	SERV	VAAL RIVER (SYSTEM) UPPER VAAL	PARKIN BRICKS SAND AND CLAY [VAAL RIVER DEV SCHEME]				28.30	122.40
8	SERV	VAAL RIVER (SYSTEM) UPPER VAAL	PETRUS STEYN MUNICIPALITY (GOLF)				28.30	122.40
8	SERV	VAAL RIVER (SYSTEM) UPPER VAAL	PETRUS STEYN MUNICIPALITY (TOWN)				28.30	122.40
8	SERV	VAAL RIVER (SYSTEM) UPPER VAAL	PRETORIUS W.P.				28.30	122.40
8	SERV	VAAL RIVER (SYSTEM) UPPER VAAL	R.F. GARMANY [VAAL RIVER DEV SCHEME]				28.30	122.40
8	SERV	VAAL RIVER (SYSTEM) UPPER VAAL	RAND WATER				28.30	122.40
8	SERV	VAAL RIVER (SYSTEM) UPPER VAAL	SCHEME				28.30	122.40
8	SERV	VAAL RIVER (SYSTEM) UPPER VAAL	STANDERTON MUN TOWN				28.30	122.40
8	SERV	VAAL RIVER (SYSTEM) UPPER VAAL	T. FORD [VAAL RIVER DEV SCHEME]				28.30	122.40
8	SERV	VAAL RIVER (SYSTEM) UPPER VAAL	TENNANT S.R.				28.30	122.40

WMA (refer map)	Foot Notes	Government Water Scheme Name	Scheme Management Parameter	Charges For Irrigation Purposes			Charges For Domestic and Industrial use	Charges For The TCTA
				m <sup>3</sup> Quota Per Ha	Charge - Cent Per Cubic Metre	Billing Fre.		
8	SERV	VAAL RIVER (SYSTEM) UPPER VAAL	TWEELING MUNICIPALITY				28.30	122.40
8	SERV	VAAL RIVER (SYSTEM) UPPER VAAL	VILLIERS MUNICIPALITY				28.30	122.40
8	SERV	VAAL RIVER (SYSTEM) UPPER VAAL	WARDEN MUNICIPALITY				28.30	122.40
4		WATERVALS RIVER (BUFFELSKLOOF DAM)	SCHEME	7500	3.99	B		
6		WHITE MFOLOZI RIVER GWS (KLIPFONTEIN DAM)	FROM THE SCHEME	6500	5.47	A		
6	SERV	WHITE MFOLOZI RIVER GWS (KLIPFONTEIN DAM)	FROM THE SCHEME TO ULUNDI				41.47	
6	SERV	WHITE MFOLOZI RIVER GWS (KLIPFONTEIN DAM)	FROM THE SCHEME TO VRYHEID MUNICIPALITY				41.47	

## Understanding the abbreviations

<b>WMA</b>	Water Management Area A map of the Water Management Areas is printed in this document for easy identification.	<b>B</b>	Bi-annually
		<b>A</b>	Annually
<b>m<sup>3</sup></b>	Cubic metre	<b>TBA</b>	To be advised
<b>Ha</b>	Hectare	<b>Billing Fre</b>	Billing Frequency

# Foot notes and additional comments

<b>Foot notes</b>	
Serv	In case where a zero cent charge is to be applied in respect of volumes smaller or equal to servitude volume, only the charge to be applied per every one m <sup>3</sup> in excess of the servitude arrangement is reflected.
<b>Additional comments</b>	
1.	Charges for domestic and industrial use: to be applied per every one m <sup>3</sup> .
2.	Charges for irrigation purposes: to be applied per every one m <sup>3</sup> .
3.	Charges for the TCTA: to be applied per every one m <sup>3</sup> .
4.	Any of the following changes made to the charges, incorporated in the relevant brochure, will be updated and published on the DWAF-website. These include: <ul style="list-style-type: none"> <li>a) Additional charges</li> <li>b) Changes to the charges incorporated in the brochure:               <ul style="list-style-type: none"> <li>- Charges that are no longer to be applied (declared as OBSOLETE);</li> <li>- Changes to charges;</li> <li>- Changes to volume variables.</li> </ul> </li> </ul>
5.	In general, charges reflect the full amount without consideration of subsidies. Invoices reflect the amounts inclusive of subsidies.

## For more information, contact your nearest office of the Department of Water Affairs and Forestry

Mpumalanga Regional Office  
Mr Johan van Aswegen  
Tel: (013) 755-1674-7

North West Regional Office  
Mr Chedwick Lobakeng  
Tel: (018) 384 3270-6

Free State Regional Office  
Mr Tseliso Ntili  
Tel: (051) 430 3134

Eastern Cape Regional Office  
Mr Zolile Keke /  
Mr Dewald Coetzee  
Tel: (043) 643 4352

KwaZulu-Natal Regional Office  
Mr JGG Hansmann  
Tel: (031) 336 2700

Northern Cape Regional Office  
Mr LJ Snyders  
Tel: (053) 831 4125

Gauteng Regional Office  
Mr Hennie Smit  
Tel: (012) 392 1301

Western Cape Regional Office  
Mr Rashid Khan  
Tel: (021) 950 7100

Limpopo Regional Office  
Prof Ola Busari  
Tel: (015) 290 1217

