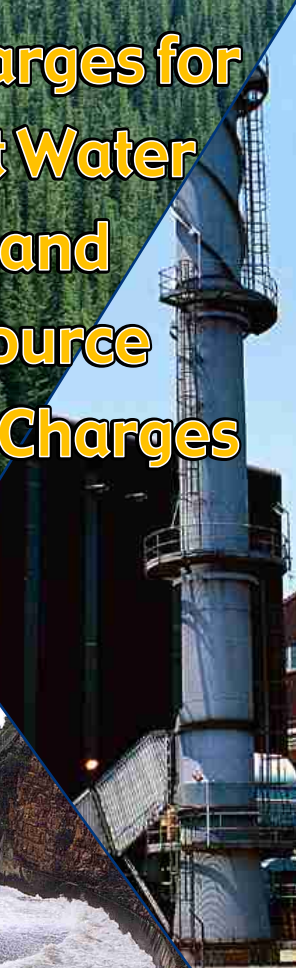
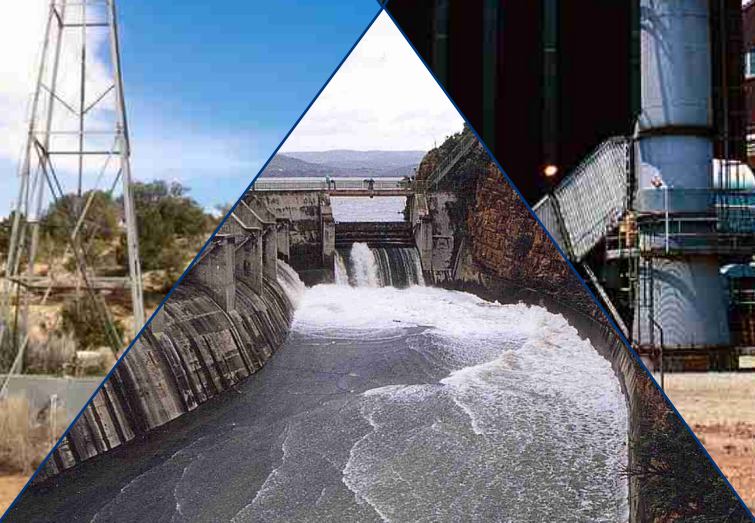


Water Use Charges for Government Water Schemes and Water Resource Management Charges



2004/2005
KwaZulu-Natal Region



*Your partner in building
a better life for all*

www.dwaf.gov.za

PROUDLY
SOUTH AFRICAN





Preface

Included in this brochure are schedules containing Water Resource Management and Water Consumptive charges that will come into effect from 1 April 2004.

Before announcing these charges a series of consultations were held by the top management of the Department of Water Affairs and Forestry (DWAf), with key national stakeholders including amongst others SALGA, SAAWU, TAU, NAFU, Agri-SA and Forestry SA.

The consultation meetings led to a better understanding of the practical implementation of the Department's Raw Water Pricing Strategy and the drivers necessitating charge increases. The charges set out in these tables have been amended with respect to a number of issues raised at the consultation meetings, but do not represent a consensus position of stakeholders and DWAf. The charges have been determined by DWAf in accordance with the mandate of the National Water Act and the Raw Water Pricing Strategy.

In order to improve the process of further consultations, it was agreed that future discussions on water charge increases will be held well in advance of announcement dates. This will enable stakeholders to properly consult with their members and make meaningful recommendations to the Department.

It was further agreed that DWAf will, during the 2004/5 financial year, initiate a process of reviewing the Raw Water Pricing Strategy. It is intended that the review of this strategy will be completed in time for the 2006/7 charges to be based on the revised strategy. Because of the requirements for public consultation it is not possible to finalise the revision in time to influence the 2005/6 charges which will, therefore, still be calculated under the existing strategy.



Mike Muller
Director-General

DEPARTMENT OF WATER AFFAIRS AND FORESTRY

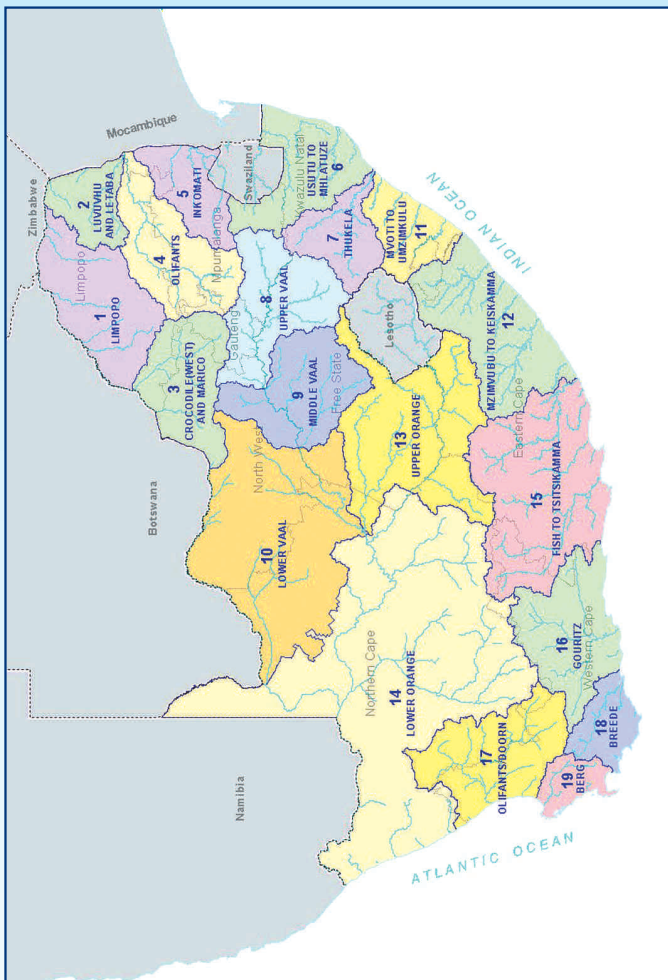
Summary of sectoral Water Resource Management Charges per Water Management Area

WATER MANAGEMENT AREA		SECTORAL UNIT COST IN C/M ³		
No	Water Management Area	Domestic/ Industrial	Agriculture: Irrigation and watering livestock	Forestry
1	LIMPOPO	1.23	0.89	0.83
2	LUVUVHU AND LETABA	1.60	1.07	0.98
3	CROCODILE (W) & MARICO	0.85	0.70	0.68
4	OLIFANTS	0.89	0.75	0.70
5	INKOMATI	0.85	0.63	0.57
6	USUTU TO MHLATHUZE	0.42	0.42	0.41
7	THUKELA	0.34	0.34	0.33
8	UPPER VAAL	1.30	0.79	0.79
9	MIDDLE VAAL	0.98	0.80	N/A
10	LOWER VAAL	0.69	0.56	N/A
11	MVOTI TO UMZIMKULU	0.91	0.87	0.84
12	MZIMVUBU TO KEISKAMMA	0.97	0.67	0.56
13	UPPER ORANGE	0.38	0.38	N/A
14	LOWER ORANGE	0.62	0.47	N/A
15	FISH TO TSITSIKAMMA	1.45	0.61	0.38
16	GOURITZ	2.11	0.72	0.56
17	OLIFANTS / DOORN	1.16	0.70	0.64
18	BREEDE	2.64	0.64	0.41
19	BERG	3.25	0.76	0.61
	Average	1.19	0.67	0.61

ALL CHARGES EXCLUDE VAT

C/M³ (cent per cubic metre)

Map of the Water Management Areas and provincial borders



How to convert cents per m³ to Rand per hectare

The charges listed in the table for irrigation purposes are provided in cents per m³. Should you wish to convert it to Rand per hectare, please follow the instructions below:

Take the total charge in cent per m³ and divide it by 100. Take the answer and multiply it with the m³ quota per hectare to get to the Rand per hectare amount. *For example see next page:*

For example:

Total Charge: 3.70 cent per m³ /100 = R 0.037 per m³

Total charge R 0.037 per m³ x 3 000 (m³ quota of water per hectare) = R111 per hectare

Understanding the abbreviations

WMA	Water Management Area A map of the Water Management Areas is printed in this document for easy identification.
m³	Cubic metre
Ha	Hectare
B	Bi-annually
A	Annually
TBA	To be advised
Billing Fre	Billing Frequency

Foot notes and additional comments

Foot notes

Serv In case where a zero cent charge is to be applied in respect of volumes smaller or equal to servitude volume, only the charge to be applied per every one m³ in excess of the servitude arrangement is reflected.

Additional comments

1. Charges for domestic and industrial use: to be applied per every one m³.
2. Charges for irrigation purposes: to be applied per every one m³.
3. Charges for the TCTA: to be applied per every one m³.
4. Any of the following changes made to the charges, incorporated in the relevant brochure, will be updated and published on the DWAF-website. These include:
 - a) Additional charges
 - b) Changes to the charges incorporated in the brochure:
 - Charges that are no longer to be applied (declared as OBSOLETE);
 - Changes to charges;
 - Changes to volume variables.
5. In general, charges reflect the full amount without consideration of subsidies. Invoices reflect the amounts inclusive of subsidies.

WMA (refer map)		Foot Notes	Government Water Scheme Name	Scheme Management Parameter	Charges For Irrigation Purposes			Charges For Domestic and Industrial use	Charges For The TCTA
					m ³ Quota Per Ha	Charge - Cent Per Cubic Metre	Billing Fre.	Charge - Cent Per Cubic Metre	
12			AMATOLA (WRIGGLESWADE DAM)	CANAL				65.15	
12			AMATOLA (WRIGGLESWADE DAM)	FROM THE DAM AND KUBUSI RIVER				65.15	
12			AMATOLA (WRIGGLESWADE DAM)	RIVER				65.15	
12			BINFIELD PARK DAM (EASTERN CAPE)	SCHEME	6100	3.41	B	66.21	
12			BIZANA (BIZANA DAM)	RAW WATER FROM THE DAM				53.00	
7	SERV		BUSHMANS RIVER GWS (WAGENDRIFT DAM)	RAW WATER FROM BUSHMANS RIVER (WAGENDRIFT DAM) TO MASONITE				10.05	
7	SERV		BUSHMANS RIVER GWS (WAGENDRIFT DAM)	RAW WATER FROM BUSHMANS RIVER (WAGENDRIFT DAM) TO MUNICIPALITY OF ESCOURT		2.30	B	10.05	
7	SERV		BUSHMANS RIVER GWS (WAGENDRIFT DAM)	RAW WATER FROM BUSHMANS RIVER (WAGENDRIFT DAM) TO NESTLE				10.05	
7			BUSHMANS RIVER GWS (WAGENDRIFT DAM)	SCHEME	7150	2.30	B	10.05	
12			BUSHMANSKRANTZ DAM	SCHEME (NO OTHER DIFFERENTIATORS HAVE BEEN IDENTIFIED)				74.14	
13			CALEDON RIVER (WELBEDACHT DAM, RUSTFONTEIN DAM AND KNELLPOORT DAM)	BLOEM WATER [RAW WATER FROM RIVER AND DAMS]				17.29	
13	SERV		CALEDON RIVER (WELBEDACHT DAM, RUSTFONTEIN DAM AND KNELLPOORT DAM)	BLOEMFONTEIN MUNICIPALITY [RAW WATER FROM MODDER RIVER]				17.29	
12			CORANA (CORANA DAM)	RAW WATER FROM THE DAM				74.14	
3			CROCODILE RIVER (HARTBEESSPOORT DAM)	DAM	6200	0.98	B	2.67	
3			CROCODILE RIVER (HARTBEESSPOORT DAM)	FROM THE CANAL SYSTEM	6200	0.98	B	2.67	

WMA (refer map)	Foot Notes	Government Water Scheme Name	Scheme Management Parameter	Charges For Irrigation Purposes			Charges For Domestic and Industrial use	Charges For The TCTA
				m ³ Quota Per Ha	Charge - Cent Per Cubic Metre	Billing Fre.		
5		CROCODILE RIVER (KWENA DAM)	RAW WATER FROM CROCODILE RIVER (KWENA DAM) DOWNSTREAM OF KROKODILPOORT (INCLUDING KROKODILPOORT MALELANE CANALS)		0.61	B		Charge - Cent Per Cubic Metre
5		CROCODILE RIVER (KWENA DAM)	RAW WATER FROM CROCODILE RIVER (KWENA DAM) TO DEPARTMENT OF AGRICULTURE		0.61	B		
5	SERV	CROCODILE RIVER (KWENA DAM)	RAW WATER FROM CROCODILE RIVER (KWENA DAM) TO FORMER KANGWANE GOVERNMENT SERVICES				11.61	
5	SERV	CROCODILE RIVER (KWENA DAM)	RAW WATER FROM CROCODILE RIVER (KWENA DAM) TO LOCAL AREA COMMITTEE OF HECTORSPRUIT				11.61	
5	SERV	CROCODILE RIVER (KWENA DAM)	RAW WATER FROM CROCODILE RIVER (KWENA DAM) TO MUNICIPALITY OF MALELANE				11.61	
5	SERV	CROCODILE RIVER (KWENA DAM)	RAW WATER FROM CROCODILE RIVER (KWENA DAM) TO MUNICIPALITY OF NELSPRUIT				11.61	
5		CROCODILE RIVER (KWENA DAM)	RAW WATER FROM CROCODILE RIVER (KWENA DAM) TO OTHER CONSUMERS				11.61	
5	SERV	CROCODILE RIVER (KWENA DAM)	RAW WATER FROM CROCODILE RIVER (KWENA DAM) TO TVL SUGAR CORPORATION LIMITED				11.61	
5		CROCODILE RIVER (KWENA DAM)	RAW WATER FROM CROCODILE RIVER (KWENA DAM) UPSTREAM OF KROKODILPOORT		0.61	B		
3		CROCODILE RIVER (NORTHWEST) GWS	BOREHOLES WITHIN REDLINE		0.63	B		
3		CROCODILE RIVER (NORTHWEST) GWS	FROM THE KLIPVOOR DAM		0.63	B		
3		CROCODILE RIVER (NORTHWEST) GWS	FROM THE ROODEKOPJES DAM		0.63	B	38.84	
3		CROCODILE RIVER (NORTHWEST) GWS	FROM THE VAALKOP DAM AND CANAL		0.63	B	38.84	
12		DABI DAM	DAM				74.14	
12		DEBE DAM	DAM				74.14	
12		DOORN RIVER (DOORN RIVER DAM)	DAM	6100	14.50	B	44.89	
3		ELANDS RIVER (LINDLEYSPOORT DAM)	FROM THE CANAL	5300	9.31	B	17.43	
3		ELANDS RIVER (LINDLEYSPOORT DAM)	FROM THE DAM				6.56	

WMA (refer map)	Foot Notes	Government Water Scheme Name	Scheme Management Parameter	Charges For Irrigation Purposes			Charges For Domestic and Industrial use	Charges For The TCTA
				m ³ Quota Per Ha	Charge - Cent Per Cubic Metre	Billing Fre.		
3		GREATER MAFIKENG WATER SUPPLY (UPPER MOLOPO AND SETUMO DAM)	SCHEME (NO OTHER DIFFERENTIATORS HAVE BEEN IDENTIFIED)				89.30	
3		HEX RIVER (BOSPOORT DAM)	SCHEME (NO OTHER DIFFERENTIATORS HAVE BEEN IDENTIFIED)				55.06	
6		HLUHLUWE RIVER GWS (HLUHLUWE DAM)	SCHEME	7320	7.04	B	19.38	
1		HOUTRIVIER DAM	FROM THE DAM				63.13	
12		KEISKAMMAHOEK (CATA DAM)	SCHEME (NO OTHER DIFFERENTIATORS HAVE BEEN IDENTIFIED)	6100	7.48	B		
12		KEISKAMMAHOEK (MINYAMENI DAM)	SCHEME	6100	5.78	B	74.14	
13		KGABANAYANE RIVER (GROOTHOEK DAM)	BLOEM WATER				63.13	
3		KLEIN MARICO RIVER (KLEIN MARICOPOORT DAM)	FROM THE CANAL SYSTEM	5300	10.71	B	23.96	
3		KLEIN MARICO RIVER (KLEIN MARICOPOORT DAM)	FROM THE DAM (INCLUDING RIVER)				10.26	
12		KLIPLAAT RIVER (WATERDOWN DAM)	DAM	6100	3.42	B	11.59	
5		KOMATI RIVER (DRIEKOPPIES & MAGUGA DAMS)	FROM THE DAM: COMMERCIAL USERS	0	2.18	B		
5		KOMATI RIVER (DRIEKOPPIES & MAGUGA DAMS)	FROM THE DAM: RESOURCE POOR FARMERS	0	2.18	B		
5		KOMATI RIVER (VYGEBOOM AND NOOITGEDACHT DAMS)	DUVHA TO HENDRINA PIPELINE				99.81	
5		KOMATI RIVER (VYGEBOOM AND NOOITGEDACHT DAMS)	FROM GLADESPRUIT CANAL	0	3.30	B		
5		KOMATI RIVER (VYGEBOOM AND NOOITGEDACHT DAMS)	FROM THE DAM	7810	0.67	B		
5		KOMATI RIVER (VYGEBOOM AND NOOITGEDACHT DAMS)	UPPER KOMATI (I.E. ESKOM)				9.09	

WMA (refer map)	Foot Notes	Government Water Scheme Name	Scheme Management Parameter	Charges For Irrigation Purposes			Charges For Domestic and Industrial use	Charges For The TCTA
				m ³ Quota Per Ha	Charge - Cent Per Cubic Metre	Billing Fre.		
3		KOSTER RIVER (KOSTER DAM)	FROM THE DAM	5300	6.13	B	26.49	Charge - Cent Per Cubic Metre
12		KUBUSI RIVER (GUBU DAM)	SCHEME				25.51	
12		KWABHACA (NTENETYANE DAM)	RAW WATER FROM THE DAM				74.14	
12		LAIING DAM	DAM				65.15	
13		LEEU RIVER (ARMENIA DAM)	RAW WATER FROM THE CANAL SYSTEM	6100	0.18	B		
13		LEEU RIVER (ARMENIA DAM)	RAW WATER FROM THE DAM AND RIVER	6100	0.18	B	3.38	
12		LIBODE (MHLANGA DAM)	RAW WATER FROM THE DAM				74.14	
12		LUSIKISIKI (XURA WEIR)	RAW WATER FROM THE DAM				53.00	
12		MACUBENI DAM	RAW WATER FROM THE DAM				74.14	
12		MALUTI (BELFORT DAM)	RAW WATER FROM THE DAM				74.17	
3		MARICO RIVER (MARICO BOSVELD AND KROMELLENBOOG DAMS)	FROM THE CANAL SYSTEM	5300	9.68	B		
3		MARICO RIVER (MARICO BOSVELD AND KROMELLENBOOG DAMS)	FROM THE DAM				19.94	
3	SERV	MARICO RIVER (MOLATEDI DAM)	WATER FROM THE SCHEME TO DERDEPOORT IRRIGATION BOARD	10295	1.61	B		
1		MASHASHANE DAM	FROM THE DAM				63.13	
11		MDLOTI RIVER GWS (HAZELMERE DAM)	SCHEME			B	52.93	
12		MHLAHLANE (MABALENI DAM)	RAW WATER FROM THE DAM				47.41	
7		MNYAMVUBU RIVER GWS (CRAIGIE BURN DAM)	SCHEME	7600	5.39	B		
13		MODDER RIVER (KRUGERSDRIFT DAM)	RAW WATER FROM THE DAM AND RIVER				4.90	
13		MODDER RIVER (KRUGERSDRIFT DAM)	ZONE 1: WATER ABSTRACTED FROM THE RIVER (KRUGERSDRIFT DAM UP TO RYANSDALE/KALKBANK)	8130	3.56	B		
13		MODDER RIVER (KRUGERSDRIFT DAM)	ZONE 2: WATER ABSTRACTED FROM THE RIVER (RYANSDALE/KALKBANK UP TO SCHOLTZBURG WEIR)	8640	3.56	B		

WMA (refer map)	Foot Notes	Government Water Scheme Name	Scheme Management Parameter	Charges For Irrigation Purposes			Charges For Domestic and Industrial use	Charges For The TCTA
				m ³ Quota Per Ha	Charge - Cent Per Cubic Metre	Billing Fre.		
1		MOGALAKWENA RIVER (GLEN ALPINE DAM)	FROM THE DAM	6200	8.09	B		
1	SERV	MOGOL RIVER (MOKOLO DAM)	CONSUMER(S) WITH SERVITUDE ARRANGEMENT OF "0" TARIFF ALLOCATION OF 10 400 000 CUBIC METRE FROM THE MOGOL RIVER (MOKOLO DAM) GWS		4.22	B		
1		MOGOL RIVER (MOKOLO DAM)	RAW WATER TO ISCOR FROM THE MOGOL RIVER (MOKOLO DAM) GWS				39.72	
8		MOOI RIVER (BOSKOP AND KLERKSKRAAL DAMS)	CANAL	7700	6.48	B		
8	SERV	MOOI RIVER (BOSKOP AND KLERKSKRAAL DAMS)	FROM THE CANAL SYSTEM TO POTCHEFSTROOM RIVER		43.82	B		
8		MOOI RIVER (BOSKOP AND KLERKSKRAAL DAMS)	RIVER	7700	1.84	B		
1		MUTSHEDZI DAM	FROM THE DAM				63.13	
12		NAHOON RIVER (NAHOON DAM)	DAM				65.15	
12		NCORA (NCORA DAM)	SCHEME		3.53	B	44.73	
7		NGAGANE RIVER GWS (NTSHINGWAYO DAM)	SCHEME		4.88	B	18.01	
1		NWANEDI/LUPHEPHE SCHEME	FROM THE DAM VIA RIVER ABOVE CROSS DAM	8400	6.04	B		
1		NWANEDI/LUPHEPHE SCHEME	FROM THE DAM VIA RIVER BELOW CROSS DAM	8400	6.04	B		
1		NWANEDI/LUPHEPHE SCHEME	FROM THE DAM VIA RIVER, WEIR AND PIPELINE				28.47	
1		NZHELELE RIVER (NZHELELE DAM)	FROM THE CANAL SYSTEM	8400	5.39	B	18.51	
1		NZHELELE RIVER (NZHELELE DAM)	FROM THE DAM AND THE RIVER	8400	2.09	B		
13	SERV	ORANGE RIVER (GARIEP DAM, VANDERKLOOF DAM AND ORANGE-FISH TUNNEL)	HOPETOWN MUNICIPALITY (RAW WATER ABSTRACTED FROM ANY OF THE DAMS AS WELL AS THE ORANGE RIVER)				4.96	

WMA (refer map)	Foot Notes	Government Water Scheme Name	Scheme Management Parameter	Charges For Irrigation Purposes			Charges For Domestic and Industrial use	Charges For The TCTA
				m ³ Quota Per Ha	Charge - Cent Per Cubic Metre	Billing Fre.		
13		ORANGE RIVER (GARIEP DAM, VANDERKLOOF DAM AND ORANGE-FISH TUNNEL)	MIDDLE ORANGE WATER CONTROL AREA (BETWEEN HOPETOWN AND DOUGLAS/MARKSDRIFT)	11000	1.05	B	4.96	Charge - Cent Per Cubic Metre
13		ORANGE RIVER (GARIEP DAM, VANDERKLOOF DAM AND ORANGE-FISH TUNNEL)	RAW WATER PUMPED BY THE DEPARTMENT FROM VANDERKLOOF DAM				38.60	
13		ORANGE RIVER (GARIEP DAM, VANDERKLOOF DAM AND ORANGE-FISH TUNNEL)	VANDERKLOOF GOVERNMENT WATER CONTROL AREA (BETWEEN GARIEP DAM AND HOPETOWN)	11000	1.05	B	4.96	
13		ORANGE RIVER (VANDERKLOOF CANALS)	RAW WATER FROM VANDERKLOOF CANALS	11000	6.27	B		
13		ORANGE-RIET (RIET RIVER SETTLEMENT) AND ORANGE-RIET CANAL	AGANANG: IRRIGATION USE SECTOR FROM VANDERKLOOF MAIN CANAL	11000	1.05	B		
13		ORANGE-RIET (RIET RIVER SETTLEMENT) AND ORANGE-RIET CANAL	COMMERCIAL FARMERS: IRRIGATION USE SECTOR FROM VANDERKLOOF MAIN CANAL	11000	1.05	B		
13		ORANGE-RIET (RIET RIVER SETTLEMENT) AND ORANGE-RIET CANAL	DRIE EENHEID: IRRIGATION USE SECTOR FROM VANDERKLOOF MAIN CANAL	11000	1.05	B		
13		ORANGE-RIET (RIET RIVER SETTLEMENT) AND ORANGE-RIET CANAL	ITERELENG: IRRIGATION USE SECTOR FROM VANDERKLOOF MAIN CANAL	11000	1.05	B		
13		ORANGE-RIET (RIET RIVER SETTLEMENT) AND ORANGE-RIET CANAL	MAHUA TRUST: IRRIGATION USE SECTOR FROM VANDERKLOOF MAIN CANAL	11000	1.05	B		
13		ORANGE-RIET (RIET RIVER SETTLEMENT) AND ORANGE-RIET CANAL	OPPERMANS: IRRIGATION USE SECTOR FROM VANDERKLOOF MAIN CANAL		1.05	B		
13		ORANGE-RIET (RIET RIVER SETTLEMENT) AND ORANGE-RIET CANAL	ORANGE-RIET CANAL SYSTEM				32.15	
13		ORANGE-RIET (RIET RIVER SETTLEMENT) AND ORANGE-RIET CANAL	PROEFPLAAS: IRRIGATION USE SECTOR FROM VANDERKLOOF MAIN CANAL		1.05	B		
13		ORANGE-RIET (RIET RIVER SETTLEMENT) AND ORANGE-RIET CANAL	RIET RIVER SETTLEMENT CANAL SYSTEM				37.90	

WMA (refer map)	Foot Notes	Government Water Scheme Name	Scheme Management Parameter	Charges For Irrigation Purposes			Charges For Domestic and Industrial use	Charges For The TCTA
				m ³ Quota Per Ha	Charge - Cent Per Cubic Metre	Billing Fre.		
13		ORANGE-RIET (RIET RIVER SETTLEMENT) AND ORANGE-RIET CANAL	ZELPHY: IRRIGATION USE SECTOR FROM VANDERKLOOF MAIN CANAL	11000	1.05	B		
12		OUTSPAN DAM	DAM				74.14	
3		PIENAARS RIVER (ROODEPLAAT DAM)	FROM THE CANAL SYSTEM	6500	12.64	B	20.20	
3		PIENAARS RIVER (ROODEPLAAT DAM)	FROM THE DAM				9.37	
12		PLEASANT VIEW DAM	DAM				38.45	
6		PONGOLA RIVER GWS (PONGOLAPOORT DAM AND MAKATINI FLATS)	FROM THE SCHEME (i.e. DAM, CANAL, RIVER)		1.83	B	14.63	
6		PONGOLA RIVER GWS (PONGOLAPOORT DAM AND MAKATINI FLATS)	TO RESOURCE POOR FARMERS FROM THE SCHEME (i.e. DAM, CANAL, RIVER)		1.47	B		
6		PONGOLA RIVER GWS (WEIR AND CANALS)	ALL		0.00	B	0.00	
12		QAMATA (LUBISI DAM)	FROM THE CANAL	6100	9.03	B		
9		RHENOSTER RIVER (KOPPIES DAM)	RAW WATER FROM THE CANAL SYSTEM	6100	17.59	B		
9		RHENOSTER RIVER (KOPPIES DAM)	RAW WATER FROM THE DAM AND RIVER	6100	4.20	B	15.68	
13	SERV	RIET RIVER (KALKFONTEIN DAM)	JACOBSDAL MUNICIPALITY (RAW WATER FROM THE KALKFONTEIN CANAL SYSTEM FOR IRRIGATION)	11000	23.32	B		
13	SERV	RIET RIVER (KALKFONTEIN DAM)	KOFFIEFONTEIN MUNICIPALITY (RAW WATER FROM THE KALKFONTEIN CANAL SYSTEM)				23.32	
13		RIET RIVER (KALKFONTEIN DAM)	RAW WATER FROM KALKFONTEIN DAM				3.18	
13		RIET RIVER (KALKFONTEIN DAM)	RAW WATER FROM THE KALKFONTEIN CANAL SYSTEM	11000	0.36	B	23.32	
13		RIET RIVER (KALKFONTEIN DAM)	RESOURCE POOR FARMERS (RAW WATER FROM THE KALKFONTEIN CANAL SYSTEM)	11000	0.36	B		
13		RIET RIVER (KALKFONTEIN DAM)	RIETRIVIER BOERDERY BK (RESOURCE POOR FARMERS) (RAW WATER FROM THE KALKFONTEIN CANAL SYSTEM)		0.36	B		
1		RIETFONTEIN 1 DAM	FROM RIETFONTEIN 1 DAM				63.13	
12		ROOIKRANTZ DAM	DAM	6100	6.79	B	65.15	

WMA (refer map)	Foot Notes	Government Water Scheme Name	Scheme Management Parameter	Charges For Irrigation Purposes			Charges For Domestic and Industrial use	Charges For The TCTA
				m ³ Quota Per Ha	Charge - Cent Per Cubic Metre	Billing Fre.		
5		SAND RIVER (WITKLIP DAM)	FROM THE DAM		6.46	B	16.89	
5	SERV	SAND RIVER (WITKLIP DAM)	FROM THE DAM: AVELON FARMS		6.46	B		
5	SERV	SAND RIVER (WITKLIP DAM)	FROM THE DAM: E.J. KAY		6.46	B		
9		SAND-VET RIVER (ERFENIS AND ALLEMANS-KRAAL DAM)	FROM ANY OF THE DAMS (DIRECTLY)	7200	1.66	B	7.09	
9		SAND-VET RIVER (ERFENIS AND ALLEMANS-KRAAL DAM)	FROM THE CANAL SYSTEM	7200	10.12	B	21.02	
9		SAND-VET RIVER (ERFENIS AND ALLEMANS-KRAAL DAM)	FROM THE RIVER	7200	7.97	B		
9	SERV	SAND-VET RIVER (ERFENIS AND ALLEMANS-KRAAL DAM)	HOOPSTAD MUNICIPALITY (RAW WATER FROM THE RIVER)				21.02	
9	SERV	SAND-VET RIVER (ERFENIS AND ALLEMANS-KRAAL DAM)	THEUNISSEN MUNICIPALITY (RAW WATER FROM THE CANAL SYSTEM)				21.02	
9		SCHOONSPRUIT (ELANDSKUIJL AND RIETSPRUIT DAMS)	SCHOONSPRUIT GOVERNMENT WATER SCHEME	7700	7.66	B	32.00	
7		SLANG RIVER GWS (ZAAIHOEK DAM) - [WMA THUKELA]	FROM THE DAM				25.61	
8		SLANG RIVER GWS (ZAAIHOEK DAM) - [WMA UPPER VAAL]	FROM THE PIPELINES AND THE AQUEDUCT TO GROOTDRAAI DAM				28.34	122.40
1		STERK RIVER (DOORNDRAAI DAM)	CANAL	7200	7.97	B		
1		STERK RIVER (DOORNDRAAI DAM)	DAM				32.00	
13		STERKSPRUIT (JOZANASHOEK DAM)	RAW WATER FROM THE DAM	6100	3.55	B	74.14	
3		STERKSTROOM (BUFFELSPOOT DAM)	FROM THE CANAL SYSTEM		7.98	B		
3		STERKSTROOM (BUFFELSPOOT DAM)	FROM THE DAM				5.13	
3		STERKSTROOM (MIDDELKRAAL DAM)	SCHEME	6200	1.00	B		

WMA (refer map)	Foot Notes	Government Water Scheme Name	Scheme Management Parameter	Charges For Irrigation Purposes			Charges For Domestic and Industrial use	Charges For The TCTA
				m ³ Quota Per Ha	Charge - Cent Per Cubic Metre	Billing Fre.		
12		TOLENI (TOLENI DAM)	RAW WATER FROM THE DAM				53.22	
12		TSOJANA DAM	DAM	6100	8.66	B	36.82	
7		TUGELA RIVER GWS (SPIOENKOP DAM)	SCHEME		4.75	B	10.15	
6		TUGELA-MHLATUZE GWS	FROM THE SCHEME TO ALL CONSUMERS (EXCLUDED DOMESTIC AND INDUSTRIAL USE)		2.37	B		
6		TUGELA-MHLATUZE GWS	FROM THE SCHEME TO MHLATUZE WATER FOR DOMESTIC AND INDUSTRIAL USE				24.94	
6		TUGELA-MHLATUZE GWS	FROM THE SCHEME TO OTHER NON-SERVITUDE CONSUMERS (EXCLUDING MHLATUZE WATER) FOR DOMESTIC AND INDUSTRIAL USE				44.94	
7		TUGELA-VAAL GWS [WMA - THUKELA]	FROM SYSTEM UP TO AND INCLUDING THE JAGERSRUST BALANCING DAM [TUGELA-VAAL RIVER AQUADUCT]				9.56	
8		TUGELA-VAAL GWS [WMA - UPPER VAAL]	FROM STERKFONTTEIN DAM [TUGELA-VAAL RIVER AQUADUCT]				98.62	
11		UMGENI RIVER GWS (MIDMAR, ALBERT FALLS AND INANDA DAMS)	SCHEME			B	15.64	
12		UMTATA DAM	DAM				55.35	
6		USUTU RIVER GWS (JERICHO, MORGENSTOND AND WESTOE DAMS)	CAMDEN [ESKOM]				55.48	
6		USUTU RIVER GWS (JERICHO, MORGENSTOND AND WESTOE DAMS)	CAMDEN LILLIEPUT				215.49	
6		USUTU RIVER GWS (JERICHO, MORGENSTOND AND WESTOE DAMS)	CAMDEN/KRIEL PIPELINE				172.48	
6		USUTU RIVER GWS (JERICHO, MORGENSTOND AND WESTOE DAMS)	FROM THE DAMS: (JERICHO, MORGENSTOND AND WESTOE DAMS)				120.80	
6		USUTU RIVER GWS (JERICHO, MORGENSTOND AND WESTOE DAMS)	FROM THE JERICHO/CAMDEN PIPELINE				120.80	

WMA (refer map)	Foot Notes	Government Water Scheme Name	Scheme Management Parameter	Charges For Irrigation Purposes			Charges For Domestic and Industrial use	Charges For The TCTA
				m ³ Quota Per Ha	Charge - Cent Per Cubic Metre	Billing Fre.		
6		USUTU RIVER GWS (JERICHO, MORGENSTOND AND WESTOE DAMS)	KENDAL (ESKOM)				179.61	
6		USUTU RIVER GWS (JERICHO, MORGENSTOND AND WESTOE DAMS)	KHOTALA/KENDAL PIPELINE				352.25	
6		USUTU RIVER GWS (JERICHO, MORGENSTOND AND WESTOE DAMS)	KRIEL (ESKOM)				69.07	
8		USUTU-VAAL RIVER (PHASE 1) (GROOTDRAAI DAM - [WMA UPPER VAAL])	GROOTDRAAI TO KNOPPIESFONTEIN				71.02	122.40
8		USUTU-VAAL RIVER (PHASE 1) (GROOTDRAAI DAM - [WMA UPPER VAAL])	GROOTDRAAI TO TUTUKA				70.25	122.40
8		USUTU-VAAL RIVER (PHASE 1) (GROOTDRAAI DAM - [WMA UPPER VAAL])	KNOPPIESFONTEIN TO BOSSIESPRUIT				76.86	122.40
8		USUTU-VAAL RIVER (PHASE 1) (GROOTDRAAI DAM - [WMA UPPER VAAL])	KNOPPIESFONTEIN TO TRICHARDSFONTEIN				113.16	122.40
8		USUTU-VAAL RIVER (PHASE 1) (GROOTDRAAI DAM - [WMA UPPER VAAL])	MATLA ESKOM				28.34	122.40
8		USUTU-VAAL RIVER (PHASE 1) (GROOTDRAAI DAM - [WMA UPPER VAAL])	NAAUWPOORT TO DUVHA				325.47	122.40
8		USUTU-VAAL RIVER (PHASE 1) (GROOTDRAAI DAM - [WMA UPPER VAAL])	PUMPED FROM TRICHARDSFONTEIN DAM TO OTHER USERS				190.89	122.40
8		USUTU-VAAL RIVER (PHASE 1) (GROOTDRAAI DAM - [WMA UPPER VAAL])	PURIFICATION WORKS				87.70	122.40
8		USUTU-VAAL RIVER (PHASE 1) (GROOTDRAAI DAM - [WMA UPPER VAAL])	RIETFONTEIN TO MATLA				148.56	122.40
8		USUTU-VAAL RIVER (PHASE 1) (GROOTDRAAI DAM - [WMA UPPER VAAL])	TUTUKA ESKOM				28.34	122.40
6		USUTU-VAAL RIVER GWS (PHASE 2) (HEYSHOPE DAM)	FROM THE DAM				6.29	

WMA (refer map)	Foot Notes	Government Water Scheme Name	Scheme Management Parameter	Charges For Irrigation Purposes			Charges For Domestic and Industrial use	Charges For The TCTA
				m ³ Quota Per Ha	Charge - Cent Per Cubic Metre	Billing Fre.		
6		USUTU-VAAL RIVER GWS (PHASE 2) (HEYSHOPE DAM)	GEELHOUTBOOM TO GROO TDRRAAI DAM				52.81	
6		USUTU-VAAL RIVER GWS (PHASE 2) (HEYSHOPE DAM)	HEYSHOPE TO DRIEFONTEIN				23.61	
6		USUTU-VAAL RIVER GWS (PHASE 2) (HEYSHOPE DAM)	HEYSHOPE TO GEELHOUTBOOM				27.36	
9	SERV	VAAL RIVER (SYSTEM) - FREE STATE REGION	ANGOLD VAAL RIVER				28.30	122.40
9		VAAL RIVER (SYSTEM) - FREE STATE REGION	USERS IN THE MIDDLE VAAL WMA				28.30	122.40
8	SERV	VAAL RIVER (SYSTEM) UPPER VAAL	A. GREEN [VAAL RIVER DEV SCHEME]				28.30	122.40
8	SERV	VAAL RIVER (SYSTEM) UPPER VAAL	AELIONS CLUB [VAAL RIVER DEV SCHEME]				28.30	122.40
8	SERV	VAAL RIVER (SYSTEM) UPPER VAAL	BALFOUR MUNICIPALITY [VAAL RIVER DEV SCHEME]				28.30	122.40
8	SERV	VAAL RIVER (SYSTEM) UPPER VAAL	BETHAL MUN - A				28.30	122.40
8	SERV	VAAL RIVER (SYSTEM) UPPER VAAL	BETHAL MUN - B				28.30	122.40
8	SERV	VAAL RIVER (SYSTEM) UPPER VAAL	BETHAL MUN - C				28.30	122.40
8	SERV	VAAL RIVER (SYSTEM) UPPER VAAL	BETHLEHEM MUN - APPLE ORCHIDS				28.30	122.40
8	SERV	VAAL RIVER (SYSTEM) UPPER VAAL	BETHLEHEM MUN - SAULSPOORT DAM 1				28.30	122.40
8	SERV	VAAL RIVER (SYSTEM) UPPER VAAL	BETHLEHEM MUN - SAULSPOORT DAM 2				28.30	122.40
8	SERV	VAAL RIVER (SYSTEM) UPPER VAAL	BETHLEHEM MUN - UNICO FEEDLOT				28.30	122.40
8	SERV	VAAL RIVER (SYSTEM) UPPER VAAL	DENEYSVILLE METRO				28.30	122.40
8	SERV	VAAL RIVER (SYSTEM) UPPER VAAL	DIHLABENG LOCAL MUNICIPALITY: BETHLEHEM				28.30	122.40
8	SERV	VAAL RIVER (SYSTEM) UPPER VAAL	DIHLABENG MUN [REITZ]				28.30	122.40
8	SERV	VAAL RIVER (SYSTEM) UPPER VAAL	EARLY BIRD FARM [VAAL]				28.30	122.40

WMA (refer map)	Foot Notes	Government Water Scheme Name	Scheme Management Parameter	Charges For Irrigation Purposes			Charges For Domestic and Industrial use	Charges For The TCFA
				m ³ Quota Per Ha	Charge - Cent Per Cubic Metre	Billing Fre.		
8	SERV	VAAL RIVER (SYSTEM) UPPER VAAL	ERASMUS J.P.				28.30	122.40
8	SERV	VAAL RIVER (SYSTEM) UPPER VAAL	ERIKA KWEKERY [VAAL RIVER DEV SCHEME]				28.30	122.40
8	SERV	VAAL RIVER (SYSTEM) UPPER VAAL	ERMELO MUN - GOLF				28.30	122.40
8	SERV	VAAL RIVER (SYSTEM) UPPER VAAL	ERMELO MUN - MINE				28.30	122.40
8	SERV	VAAL RIVER (SYSTEM) UPPER VAAL	ERMELO MUN - TOWN				28.30	122.40
8	SERV	VAAL RIVER (SYSTEM) UPPER VAAL	F. SUPRA (E.P. ROSSOU) [VAAL RIVER DEV SCHEME]				28.30	122.40
8	SERV	VAAL RIVER (SYSTEM) UPPER VAAL	FRANKFORT A MUNICIPALITY				28.30	122.40
8	SERV	VAAL RIVER (SYSTEM) UPPER VAAL	FRANKFORT B MUNICIPALITY				28.30	122.40
8	SERV	VAAL RIVER (SYSTEM) UPPER VAAL	G. COLEMAN [VAAL RIVER DEV SCHEME]				28.30	122.40
8	SERV	VAAL RIVER (SYSTEM) UPPER VAAL	HARRISMITH MUN - BERGSIG BOTANICAL				28.30	122.40
8	SERV	VAAL RIVER (SYSTEM) UPPER VAAL	HARRISMITH MUN - FEEDLOTS				28.30	122.40
8	SERV	VAAL RIVER (SYSTEM) UPPER VAAL	HARRISMITH MUN - GRAVITATIONAL LINE				28.30	122.40
8	SERV	VAAL RIVER (SYSTEM) UPPER VAAL	HARRISMITH MUN - NUWEJAARSPRUIT				28.30	122.40
8	SERV	VAAL RIVER (SYSTEM) UPPER VAAL	HARRISMITH MUN - TOWN CENTRE				28.30	122.40
8	SERV	VAAL RIVER (SYSTEM) UPPER VAAL	HARRISMITH MUN - TSHIANE				28.30	122.40
8	SERV	VAAL RIVER (SYSTEM) UPPER VAAL	HEILBRON MUN				28.30	122.40
8	SERV	VAAL RIVER (SYSTEM) UPPER VAAL	INDICOT FARMING [VAAL RIVER DEV SCHEME]				28.30	122.40
8	SERV	VAAL RIVER (SYSTEM) UPPER VAAL	KARAN ESTATES [VAAL RIVER DEV SCHEME]				28.30	122.40
8	SERV	VAAL RIVER (SYSTEM) UPPER VAAL	LAMBERTI M.J.				28.30	122.40
8	SERV	VAAL RIVER (SYSTEM) UPPER VAAL	METSIMAHOLO LOCAL MUNICIPALITY (ORANJEVILLE)				28.30	122.40
8	SERV	VAAL RIVER (SYSTEM) UPPER VAAL	MORGENZON MUN				28.30	122.40
8	SERV	VAAL RIVER (SYSTEM) UPPER VAAL	MSUKALIGWA MUNICIPALITY: BREYTON LOCAL AUTHORITY				28.30	122.40

WMA (refer map)	Foot Notes	Government Water Scheme Name	Scheme Management Parameter	Charges For Irrigation Purposes			Charges For Domestic and Industrial use	Charges For The TCTA
				m ³ Quota Per Ha	Charge - Cent Per Cubic Metre	Billing Fre.		
8	SERV	VAAL RIVER (SYSTEM) UPPER VAAL	PARKIN BRICKS SAND AND CLAY [VAAL RIVER DEV SCHEME]				28.30	122.40
8	SERV	VAAL RIVER (SYSTEM) UPPER VAAL	PETRUS STEYN MUNICIPALITY (GOLF)				28.30	122.40
8	SERV	VAAL RIVER (SYSTEM) UPPER VAAL	PETRUS STEYN MUNICIPALITY (TOWN)				28.30	122.40
8	SERV	VAAL RIVER (SYSTEM) UPPER VAAL	PRETORIUS W.P.				28.30	122.40
8	SERV	VAAL RIVER (SYSTEM) UPPER VAAL	R.F. GARMANY [VAAL RIVER DEV SCHEME]				28.30	122.40
8	SERV	VAAL RIVER (SYSTEM) UPPER VAAL	RAND WATER				28.30	122.40
8		VAAL RIVER (SYSTEM) UPPER VAAL	SCHEME				28.30	122.40
8	SERV	VAAL RIVER (SYSTEM) UPPER VAAL	STANDERTON MUN TOWN				28.30	122.40
8	SERV	VAAL RIVER (SYSTEM) UPPER VAAL	T. FORD [VAAL RIVER DEV SCHEME]				28.30	122.40
8	SERV	VAAL RIVER (SYSTEM) UPPER VAAL	TENNANT S.R.				28.30	122.40
8	SERV	VAAL RIVER (SYSTEM) UPPER VAAL	TWEELING MUNICIPALITY				28.30	122.40
8	SERV	VAAL RIVER (SYSTEM) UPPER VAAL	VILLIERS MUNICIPALITY				28.30	122.40
8	SERV	VAAL RIVER (SYSTEM) UPPER VAAL	WARDEN MUNICIPALITY				28.30	122.40
6		WHITE MFOLOZI RIVER GWS (KLIPFONTEIN DAM)	FROM THE SCHEME	6500	5.47	A		
6	SERV	WHITE MFOLOZI RIVER GWS (KLIPFONTEIN DAM)	FROM THE SCHEME TO ULUNDI				41.47	
6	SERV	WHITE MFOLOZI RIVER GWS (KLIPFONTEIN DAM)	FROM THE SCHEME TO VRYHEID MUNICIPALITY				41.47	
13		WITTESPRUIT (EGMONT DAM)	EGMONT IRRIGATION BOARD	6100	0.20	B		
12		XILINXA DAM	DAM				28.52	
12		XILINXA DAM	FROM GCUWA WEIR				41.20	
12		XONXA DAM	SCHEME (NO OTHER DIFFERENTIATORS HAVE BEEN IDENTIFIED)	6100	1.61	B		

WMA (refer map)	Foot Notes	Government Water Scheme Name	Scheme Management Parameter	Charges For Irrigation Purposes		Charges For Domestic and Industrial use	Charges For The TCTA
				m ³ Quota Per Ha	Charge - Billing Cent Per Cubic Metre		
12		ZANYOKWE (SANDILE DAM)	PIPELINE			72.32	
12		ZANYOKWE (SANDILE DAM)	SCHEME (NO OTHER DIFFERENTIATORS HAVE BEEN IDENTIFIED)	6100	3.74 B		Charge - Cent Per Cubic Metre

For more information, contact your nearest office of the Department of Water Affairs and Forestry

Mpumalanga Regional Office
Mr Johan van Aswegen
Tel: (013) 755-1674-7

Free State Regional Office
Mr Tseliso Ntuli
Tel: (051) 430 3134

KwaZulu-Natal Regional Office
Mr JGG Hansmann
Tel: (031) 336 2700

Gauteng Regional Office
Mr Hennie Smit
Tel: (012) 392 1301

Limpopo Regional Office
Prof Ola Busari
Tel: (015) 290 1217

North West Regional Office
Mr Chedwick Lobakeng
Tel: (018) 384 3270-6

Eastern Cape Regional Office
Mr Zolile Keke /
Mr Dewald Coetzee
Tel: (043) 643 4352

Northern Cape Regional Office
Mr LJ Snyders
Tel: (053) 831 4125

Western Cape Regional Office
Mr Rashid Khan
Tel: (021) 950 7100