



# **Water Use Charges for Government Water Schemes and Water Resource Management Charges**

2005/2006

GAUTENG REGION



**water & forestry**

Department:  
Water Affairs and Forestry  
**REPUBLIC OF SOUTH AFRICA**



## Preface

This brochure contains the Water Resource Management and Water Consumptive charges that will come into effect from 1 April 2005.

Before finalising these charges, consultations were held with key national and local stakeholders including amongst others SALGA, SAAWU, Agri-SA, TAU, NAFU, and Forestry SA.

The consultation meetings led to a better understanding of the Raw Water Pricing Strategy and the main cost drivers. The charges were amended in a number of areas as a result of issues raised at the consultation meetings, but they do not represent a consensus position since DWAF must set charges in accordance with the National Water Act and the current Raw Water Pricing Strategy.

While the consultation process has significantly improved from previous years, we acknowledge that there is a need to consult earlier and will endeavour to do so in future.

The consultation process will also be addressed in the review of the Raw Water Pricing Strategy that is currently underway. This review should be completed in time to guide the setting of the 2006/7 charges.

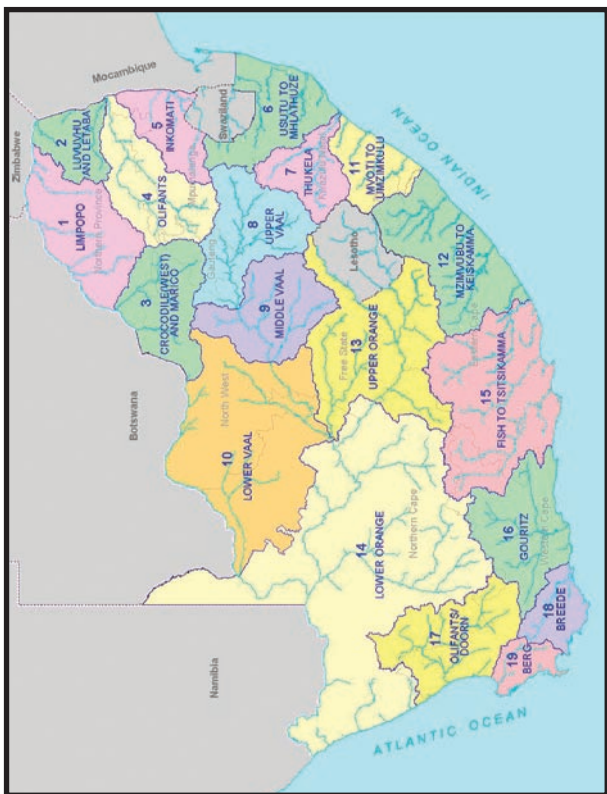


Mike Muller  
Director-General  
DEPARTMENT OF WATER AFFAIRS AND  
FORESTRY

# WRM Charge Summary by WMA

WMA	Domestic & Industrial 2005-6 Charge (c per cu m)	Agriculture 2005-6 Charge (c per cu m)	Forestry 2005-6 Charge (c per cu m)
1 Limpopo	1.35	0.98	0.73
2 Luvuvhu Letaba	1.82	1.21	0.84
3 Crocodile (w), Marico	1.08	0.92	0.73
4 Olifants	1.21	0.93	0.71
5 Inkomati	0.96	0.64	0.48
6 Usutu-Mhlatauze	0.5	0.44	0.34
7 Thukela	0.41	0.41	0.32
8 Upper Vaal	1.42	0.82	0.64
9 Middle Vaal	1.48	1.19	N/A
10 Lower Vaal	0.9	0.66	N/A
11 Mvoti-Umzimkulu	1.05	1.01	0.79
12 Mzimvubu-Keiskamma	1.53	1.06	0.73
13 Upper Orange	0.42	0.38	N/A
14 Lower Orange	0.85	0.57	N/A
15 Fish-Tsitsikamma	1.64	0.7	0.37
16 Gouritz	2.23	0.72	0.4
17 Olifants/Doorn	1.41	0.7	0.48
18 Breede	2.64	0.64	0.26
19 Berg	3.25	0.76	0.54

## Map of the Water Management Areas and provincial borders



### How to convert cents per m<sup>3</sup> to Rand per hectare

The charges listed in the table for irrigation purposes are provided in cents per m<sup>3</sup>. Should you wish to convert it to Rand per hectare, please follow the instructions below:

Take the total charge in cent per m<sup>3</sup> and divide it by 100. Take the answer and multiply it with the

water quota in m<sup>3</sup> per hectare to get to the Rand per hectare amount.

**For example:**

Total Charge: 3.70 cent per m<sup>3</sup>/ 100 = R0.037 per m<sup>3</sup>

Total charge R0.037 per m<sup>3</sup> x 3000 (water quota in m<sup>3</sup> per hectare) = R111 per hectare

**Understanding the abbreviations**

WMA	Water Management Area A map of the Water Management Area is printed in this document for easy identification.
m <sup>3</sup>	Cubic metre
Ha	Hectare
B	Bi-annually
A	Annually
TBA	To be advised
Billing Freq	Billing Frequency



Region: Gauteng				Charges for Irrigation Purposes			Charges for Domestic And Industrial	
WMA (refer map)	Foot Notes	Government Water Scheme Name	Scheme Management Parameter	m <sup>3</sup> Quota Per Ha	Charge - Cent Per Cubic Metre (Irrigation)	Billing Freq	Charge - Cent Per Cubic Metre (Domestic & Industrial)	Charge - Cent Per Cubic Metre (TCTA)
4		USUTU-VAAL RIVER GWS (PHASE 1)(GROOTDRAAI DAM) - [WMA OLIFANTS]	TRICHARFDSFONTEIN TO WITBANK DAM				134.56	131.58
5		KOMATI RIVER (VYGEBOOM AND NOOITGEDACHT DAMS)	DAM	7810	1.00			
5		KOMATI RIVER (VYGEBOOM AND NOOITGEDACHT DAMS)	DUVHA TO HENDRINA PIPELINE				110.99	
5		KOMATI RIVER (VYGEBOOM AND NOOITGEDACHT DAMS)	FROM GLADDESPRUIT CANAL		3.80			
5		KOMATI RIVER (VYGEBOOM AND NOOITGEDACHT DAMS)	UPPER KOMATI [I.E. ESKOM]				10.11	

Region: Gauteng				Charges for Irrigation Purposes		Charges for Domestic And Industrial		
WMA (refer map)	Foot Notes	Government Water Scheme Name	Scheme Management Parameter	m <sup>3</sup> Quota Per Ha	Charge - Cent Per Cubic Metre (Irrigation)	Billing Freq	Charge - Cent Per Cubic Metre (Domestic & Industrial)	Charge - Cent Per Cubic Metre (TCTA)
6		USUTU RIVER GWS (JERICHO, MORGENSTOND AND WESTOE DAMS)	CAMDEN [ESKOM]				61.69	
6		USUTU RIVER GWS (JERICHO, MORGENSTOND AND WESTOE DAMS)	CAMDEN LILLIEPUT				239.63	
6		USUTU RIVER GWS (JERICHO, MORGENSTOND AND WESTOE DAMS)	CAMDEN/KRIEL PIPELINE				191.80	
6		USUTU RIVER GWS (JERICHO, MORGENSTOND AND WESTOE DAMS)	FROM THE DAMS: (JERICHO, MORGENSTOND AND WESTOE DAMS)				134.33	

Region: Gauteng					Charges for Irrigation Purposes		Charges for Domestic And Industrial	
WMA (refer map)	Foot Notes	Government Water Scheme Name	Scheme Management Parameter	m <sup>3</sup> Quota Per Ha	Charge - Cent Per Cubic Metre (Irrigation)	Billing Freq	Charge - Cent Per Cubic Metre (Domestic & Industrial)	Charge - Cent Per Cubic Metre (TCTA)
6		USUTU RIVER GWS (JERICHO, MORGENSTOND AND WESTOE DAMS)	FROM THE JERICHO/ CAMDEN PIPELINE				134.33	
6		USUTU RIVER GWS (JERICHO, MORGENSTOND AND WESTOE DAMS)	KENDAL (ESKOM)				199.72	
6		USUTU RIVER GWS (JERICHO, MORGENSTOND AND WESTOE DAMS)	KHUTALA/KENDAL PIPELINE				391.71	
6		USUTU RIVER GWS (JERICHO, MORGENSTOND AND WESTOE DAMS)	KRIEL (ESKOM)				76.80	



Region: Gauteng					Charges for Irrigation Purposes			Charges for Domestic And Industrial	
WMA (refer map)	Foot Notes	Government Water Scheme Name	Scheme Management Parameter	m <sup>3</sup> Quota Per Ha	Charge - Cent Per Cubic Metre (Irrigation)	Billing Freq	Charge - Cent Per Cubic Metre (Domestic & Industrial)	Charge - Cent Per Cubic Metre (TCTA)	
6		USUTU-VAAL RIVER GWS (PHASE 2)(HEYSHOPE DAM)	FROM THE DAM				7.00		
6		USUTU-VAAL RIVER GWS (PHASE 2) (HEYSHOPE DAM)	GEELHOUTBOOM TO GROOTDRAAI DAM				59.05		
6		USUTU-VAAL RIVER GWS (PHASE 2) (HEYSHOPE DAM)	HEYSHOPE TO DRIEFONTEIN				25.83		
6		USUTU-VAAL RIVER GWS (PHASE 2) (HEYSHOPE DAM)	HEYSHOPE TO GEELHOUTBOOM				30.42		
7		SLANG RIVER GWS (ZAAIHOEK DAM) - [WMA THUKELA]	FROM THE DAM				25.61		

Region: Gauteng				Charges for Irrigation Purposes		Charges for Domestic And Industrial		
WMA (refer map)	Foot Notes	Government Water Scheme Name	Scheme Management Parameter	m <sup>3</sup> Quota Per Ha	Charge - Cent Per Cubic Metre (Irrigation)	Billing Freq	Charge - Cent Per Cubic Metre (Domestic & Industrial)	Charge - Cent Per Cubic Metre (TCTA)
7		TUGELA-VAAL GWS [WMA - THUKELA]	FROM SYSTEM UP TO AND INCLUDING THE JAGERSRUST BALANCING DAM [TUGELA-VAAL RIVER AQUADUCT]				10.63	
8		MOOI RIVER (BOSKOP AND KLERKSKRAAL DAMS)	CANAL	7700	6.96		48.72	
8		MOOI RIVER (BOSKOP AND KLERKSKRAAL DAMS)	FROM THE CANAL SYSTEM TO POTCHEFSTROOM		43.82			
8		MOOI RIVER (BOSKOP AND KLERKSKRAAL DAMS)	RIVER	7700	2.25		9.76	

Region: Gauteng				Charges for Irrigation Purposes			Charges for Domestic And Industrial	
WMA (refer map)	Foot Notes	Government Water Scheme Name	Scheme Management Parameter	m <sup>3</sup> Quota Per Ha	Charge - Cent Per Cubic Metre (Irrigation)	Billing Freq	Charge - Cent Per Cubic Metre (Domestic & Industrial)	Charge - Cent Per Cubic Metre (TCTA)
8		SLANG RIVER GWS (ZAAIHOEK DAM) - [WMA UPPER VAAL]	FROM THE PIPELINES AND THE AQUEDUCT TO GROOTDRAAI DAM				26.82	131.58
8		TUGELA-VAAL GWS [WMA - UPPER VAAL]	FROM STERKFORNTEIN DAM [TUGELA-VAAL RIVER AQUADUCT]				109.66	
8		USUTU-VAAL RIVER (PHASE 1)(GROOTDRAAI DAM - [WMA UPPER VAAL])	GROOTDRAAI TO KNOPPIESFORNTEIN				44.07	131.58
8		USUTU-VAAL RIVER (PHASE 1)(GROOTDRAAI DAM - [WMA UPPER VAAL])	GROOTDRAAI TO TUTUKA				54.86	131.58

Region: Gauteng				Charges for Irrigation Purposes			Charges for Domestic And Industrial	
WMA (refer map)	Foot Notes	Government Water Scheme Name	Scheme Management Parameter	m <sup>3</sup> Quota Per Ha	Charge - Cent Per Cubic Metre (Irrigation)	Billing Freq	Charge - Cent Per Cubic Metre (Domestic & Industrial)	Charge - Cent Per Cubic Metre (TCTA)
8		USUTU-VAAL RIVER (PHASE 1)(GROOTDRAAI DAM - [WMA UPPER VAAL])	KNOPPIESFONTEIN TO BOSSIESPRUIT				76.37	131.58
8		USUTU-VAAL RIVER (PHASE 1)(GROOTDRAAI DAM - [WMA UPPER VAAL])	KNOPPIESFONTEIN TO TRICHARDSFONTEIN				85.74	131.58
8		USUTU-VAAL RIVER (PHASE 1)(GROOTDRAAI DAM - [WMA UPPER VAAL])	MATLA ESKOM				26.82	131.58
8		USUTU-VAAL RIVER (PHASE 1)(GROOTDRAAI DAM - [WMA UPPER VAAL])	NAAUWPOORT TO DUVHA				160.93	131.58

Region: Gauteng				Charges for Irrigation Purposes		Charges for Domestic And Industrial		
WMA (refer map)	Foot Notes	Government Water Scheme Name	Scheme Management Parameter	m <sup>3</sup> Quota Per Ha	Charge - Cent Per Cubic Metre (Irrigation)	Billing Freq	Charge - Cent Per Cubic Metre (Domestic & Industrial)	Charge - Cent Per Cubic Metre (TCTA)
8		USUTU-VAAL RIVER (PHASE 1)(GROOTDRAAI DAM - [WMA UPPER VAAL])	PUMPED FROM RICHARDSFONTEIN DAM TO OTHER USERS				134.56	131.58
8		USUTU-VAAL RIVER (PHASE 1)(GROOTDRAAI DAM - [WMA UPPER VAAL])	PURIFICATION WORKS				58.73	131.58
8		USUTU-VAAL RIVER (PHASE 1)(GROOTDRAAI DAM - [WMA UPPER VAAL])	RIETFONTEIN TO MATLA				142.91	131.58
8		USUTU-VAAL RIVER (PHASE 1)(GROOTDRAAI DAM - [WMA UPPER VAAL])	TUTUKA ESKOM				26.82	131.58

Region: Gauteng						Charges for Irrigation Purposes		Charges for Domestic And Industrial	
WMA (refer map)	Foot Notes	Government Water Scheme Name	Scheme Management Parameter	m <sup>3</sup> Quota Per Ha	Charge - Cent Per Cubic Metre (Irrigation)	Billing Freq	Charge - Cent Per Cubic Metre (Domestic & Industrial)	Charge - Cent Per Cubic Metre (TCTA)	
8	SERV	VAAL RIVER (SYSTEM) UPPER VAAL	A. GREEN [VAAL RIVER DEV SCHEME]			A	26.82	131.58	
8		VAAL RIVER (SYSTEM) UPPER VAAL	AELIONS CLUB [VAAL RIVER DEV SCHEME]				26.82	131.58	
8	SERV	VAAL RIVER (SYSTEM) UPPER VAAL	BALFOUR MUNICIPALITY [VAAL RIVER DEV SCHEME]			A	26.82	131.58	
8	SERV	VAAL RIVER (SYSTEM) UPPER VAAL	BETHAL MUN - A			A	26.82	131.58	
8	SERV	VAAL RIVER (SYSTEM) UPPER VAAL	BETHAL MUN - B			A	26.82	131.58	

Region: Gauteng						Charges for Irrigation Purposes		Charges for Domestic And Industrial	
WMA (refer map)	Foot Notes	Government Water Scheme Name	Scheme Management Parameter	m <sup>3</sup> Quota Per Ha	Charge - Cent Per Cubic Metre (Irrigation)	Billing Freq	Charge - Cent Per Cubic Metre (Domestic & Industrial)	Charge - Cent Per Cubic Metre (TCTA)	
8	SERV	VAAL RIVER (SYSTEM) UPPER VAAL	BETHAL MUN - C			A	26.82	131.58	
8		VAAL RIVER (SYSTEM) UPPER VAAL	BETHLEHEM MUN - APPLE ORCHIDS				26.82	131.58	
8		VAAL RIVER (SYSTEM) UPPER VAAL	BETHLEHEM MUN - SAULSPOORT DAM 1				26.82	131.58	
8		VAAL RIVER (SYSTEM) UPPER VAAL	BETHLEHEM MUN - SAULSPOORT DAM 2				26.82	131.58	
8		VAAL RIVER (SYSTEM) UPPER VAAL	BETHLEHEM MUN - UNICO FEEDLOT				26.82	131.58	

Region: Gauteng				Charges for Irrigation Purposes		Charges for Domestic And Industrial		
WMIA (refer map)	Foot Notes	Government Water Scheme Name	Scheme Management Parameter	m <sup>3</sup> Quota Per Ha	Charge - Cent Per Cubic Metre (Irrigation)	Billing Freq	Charge - Cent Per Cubic Metre (Domestic & Industrial)	Charge - Cent Per Cubic Metre (TCTA)
8		VAAL RIVER (SYSTEM) UPPER VAAL	DENEYSVILLE METRO				26.82	131.58
8	SERV	VAAL RIVER (SYSTEM) UPPER VAAL	DIHLABENG LOCAL MUNICIPALITY: BETHLEHEM			A	26.82	131.58
8	SERV	VAAL RIVER (SYSTEM) UPPER VAAL	DIHLABENG MUN [REITZ]			A	26.82	131.58
8	SERV	VAAL RIVER (SYSTEM) UPPER VAAL	EARLY BIRD FARM [VAAL]			A	26.82	131.58



Region: Gauteng				Charges for Irrigation Purposes			Charges for Domestic And Industrial	
WMA (refer map)	Foot Notes	Government Water Scheme Name	Scheme Management Parameter	m <sup>3</sup> Quota Per Ha	Charge - Cent Per Cubic Metre (Irrigation)	Billing Freq	Charge - Cent Per Cubic Metre (Domestic & Industrial)	Charge - Cent Per Cubic Metre (TCTA)
8	SERV	VAAL RIVER (SYSTEM) UPPER VAAL	ERASMUS J.P.			A	26.82	131.58
8	SERV	VAAL RIVER (SYSTEM) UPPER VAAL	ERIKA KWEKERY [VAAL RIVER DEV SCHEME]			A	26.82	131.58
8		VAAL RIVER (SYSTEM) UPPER VAAL	ERMELO MUN - GOLF				26.82	131.58
8		VAAL RIVER (SYSTEM) UPPER VAAL	ERMELO MUN - MINE				26.82	131.58
8		VAAL RIVER (SYSTEM) UPPER VAAL	ERMELO MUN - TOWN				26.82	131.58
8	SERV	VAAL RIVER (SYSTEM) UPPER VAAL	F. SUPRA (E.P. ROSSOU) [VAAL RIVER DEV SCHEME]			A	26.82	131.58

Region: Gauteng				Charges for Irrigation Purposes		Charges for Domestic And Industrial		
WMA (refer map)	Foot Notes	Government Water Scheme Name	Scheme Management Parameter	m <sup>3</sup> Quota Per Ha	Charge - Cent Per Cubic Metre (Irrigation)	Billing Freq	Charge - Cent Per Cubic Metre (Domestic & Industrial)	Charge - Cent Per Cubic Metre (TCTA)
8	SERV	VAAL RIVER (SYSTEM) UPPER VAAL	FRANKFORT A MUNICIPALITY			A	26.82	131.58
8	SERV	VAAL RIVER (SYSTEM) UPPER VAAL	FRANKFORT B MUNICIPALITY			A	26.82	131.58
8	SERV	VAAL RIVER (SYSTEM) UPPER VAAL	G. COLEMAN [VAAL RIVER DEV SCHEME]			A	26.82	131.58
8	SERV	VAAL RIVER (SYSTEM) UPPER VAAL	HARRISMITH MUN - BERGSIG BOTANICAL			A	26.82	131.58
8	SERV	VAAL RIVER (SYSTEM) UPPER VAAL	HARRISMITH MUN - FEEDLOTS			A	26.82	131.58
8	SERV	VAAL RIVER (SYSTEM) UPPER VAAL	HARRISMITH MUN - GRAVITATIONAL LINE			A	26.82	131.58

Region: Gauteng				Charges for Irrigation Purposes		Charges for Domestic And Industrial		
WMA (refer map)	Foot Notes	Government Water Scheme Name	Scheme Management Parameter	m <sup>3</sup> Quota Per Ha	Charge - Cent Per Cubic Metre (Irrigation)	Billing Freq	Charge - Cent Per Cubic Metre (Domestic & Industrial)	Charge - Cent Per Cubic Metre (TCTA)
8	SERV	VAAL RIVER (SYSTEM) UPPER VAAL	HARRISMITH MUN - NUWEJAARSPRUIT			A	26.82	131.58
8	SERV	VAAL RIVER (SYSTEM) UPPER VAAL	HARRISMITH MUN - TOWN CENTRE			A	26.82	131.58
8	SERV	VAAL RIVER (SYSTEM) UPPER VAAL	HARRISMITH MUN - TSHIANE			A	26.82	131.58
8		VAAL RIVER (SYSTEM) UPPER VAAL	HEILBRON MUN				26.82	131.58
8	SERV	VAAL RIVER (SYSTEM) UPPER VAAL	KARAN ESTATES [VAAL RIVER DEV SCHEME]			A	26.82	131.58

Region: Gauteng				Charges for Irrigation Purposes			Charges for Domestic And Industrial	
WMA (refer map)	Foot Notes	Government Water Scheme Name	Scheme Management Parameter	m <sup>3</sup> Quota Per Ha	Charge - Cent Per Cubic Metre (Irrigation)	Billing Freq	Charge - Cent Per Cubic Metre (Domestic & Industrial)	Charge - Cent Per Cubic Metre (TCTA)
8	SERV	VAAL RIVER (SYSTEM) UPPER VAAL	LAMBERTI M.J.			A	26.82	131.58
8	SERV	VAAL RIVER (SYSTEM) UPPER VAAL	METSIMAHOLO LOCAL MUNICIPALITY (ORANJEVILLE)			A	26.82	131.58
8	SERV	VAAL RIVER (SYSTEM) UPPER VAAL	MORGENZON MUN			A	26.82	131.58
8	SERV	VAAL RIVER (SYSTEM) UPPER VAAL	MSUKALIGWA MUNICIPALITY: BREYTON LOCAL AUTHORITY			A	26.82	131.58
8	SERV	VAAL RIVER (SYSTEM) UPPER VAAL	PARKIN BRICKS SAND AND CLAY [VAAL RIVER DEV SCHEME]			A	26.82	131.58

Region: Gauteng				Charges for Irrigation Purposes			Charges for Domestic And Industrial	
WMA (refer map)	Foot Notes	Government Water Scheme Name	Scheme Management Parameter	m <sup>3</sup> Quota Per Ha	Charge - Cent Per Cubic Metre (Irrigation)	Billing Freq	Charge - Cent Per Cubic Metre (Domestic & Industrial)	Charge - Cent Per Cubic Metre (TCTA)
8	SERV	VAAL RIVER (SYSTEM) UPPER VAAL	PETRUS STEYN MUNICIPALITY (GOLF)			A	26.82	131.58
8	SERV	VAAL RIVER (SYSTEM) UPPER VAAL	PETRUS STEYN MUNICIPALITY (TOWN)			A	26.82	131.58
8		VAAL RIVER (SYSTEM) UPPER VAAL	PRETORIUS W.P.				26.82	131.58
8	SERV	VAAL RIVER (SYSTEM) UPPER VAAL	R.F. GARMANY [VAAL RIVER DEV SCHEME]			A	26.82	131.58
8	SERV	VAAL RIVER (SYSTEM) UPPER VAAL	RAND WATER			A	26.82	131.58
8		VAAL RIVER (SYSTEM) UPPER VAAL	SCHEME				26.82	131.58

Region: Gauteng				Charges for Irrigation Purposes			Charges for Domestic And Industrial	
WMA (refer map)	Foot Notes	Government Water Scheme Name	Scheme Management Parameter	m <sup>3</sup> Quota Per Ha	Charge - Cent Per Cubic Metre (Irrigation)	Billing Freq	Charge - Cent Per Cubic Metre (Domestic & Industrial)	Charge - Cent Per Cubic Metre (TCTA)
8	SERV	VAAL RIVER (SYSTEM) UPPER VAAL	STANDERTON MUN TOWN			A	26.82	131.58
8	SERV	VAAL RIVER (SYSTEM) UPPER VAAL	T. FORD [VAAL RIVER DEV SCHEME]			A	26.82	131.58
8	SERV	VAAL RIVER (SYSTEM) UPPER VAAL	TENNANT S.R.			A	26.82	131.58
8	SERV	VAAL RIVER (SYSTEM) UPPER VAAL	TWEELING MUNICIPALITY			A	26.82	131.58
8		VAAL RIVER (SYSTEM) UPPER VAAL	VILLIERS MUNICIPALITY				26.82	131.58
8	SERV	VAAL RIVER (SYSTEM) UPPER VAAL	WARDEN MUNICIPALITY			A	26.82	131.58

## Foot notes and additional comments

Foot notes	
Serv	In case where a zero charge is to be applied in respect of volumes smaller or equal to servitudes volume, only the charges to be applied per every one m <sup>3</sup> in excess of the servitude arrangement is reflected.
Addition comments	
1	Charges for domestic and industrial use: to be applied per every one m <sup>3</sup> .
2	Charges for irrigation purpose: To be applied per every one m <sup>3</sup> .
3	Charges for the TCTA: To be applied per every one m <sup>3</sup> .
4	Any changes made to the charges, in the brochures, will be updated and published on the DWAF- website. These include: <ul style="list-style-type: none"> <li>a Additional charges</li> <li>b Changes to the charges incorporated in the brochure:               <ul style="list-style-type: none"> <li>- Charges that are no longer to be applied (declared as OBSOLETE),</li> <li>- Changes to charges,</li> <li>- Changes to volume variables.</li> </ul> </li> </ul>
5	The charge for Resource Poor Farmers normally reflects the full amount without consideration of subsidies. Applicable subsidies are given as discounts during the billing process.

### For more information, contact your nearest office of the Department of Water Affairs and Forestry

#### Mpumalanga Region Office

Mr Johann van Aswegen  
Tel: (013) 932 2042/47

#### Free State Regional Office

Mr Tseliso Ntili  
Tel: (051) 405 9281

#### KwaZulu-Natal Regional Office

Mr JGG Hansmann  
Tel: (031) 336 2700

#### Gauteng Regional Office

Mr Hennie Smith  
Tel: (012) 392 1301

#### Limpopo Regional Office

Mr Alson Matukane  
Tel: (051) 290 1215

#### North West Regional Office

Mr Chadwick Lobakeng  
Tel: (018) 384 3270/6

#### Eastern Cape Regional Office

Mr Zolile Keke or  
Mr Dewald Coetzee  
Tel: (043) 603 4352

#### Northern Cape Regional Office

Mr LJ Snyders  
Tel: (053) 831 4125

#### Western Cape Regional Office

Mr Rashid Khan  
Tel: (021) 950 7100