



# **Water Use Charges for Government Water Schemes and Water Resource Management Charges**

2005/2006

MPUMALANGA REGION



**water & forestry**

Department:  
Water Affairs and Forestry  
**REPUBLIC OF SOUTH AFRICA**



## Preface

This brochure contains the Water Resource Management and Water Consumptive charges that will come into effect from 1 April 2005.

Before finalising these charges, consultations were held with key national and local stakeholders including amongst others SALGA, SAAWU, Agri-SA, TAU, NAFU, and Forestry SA.

The consultation meetings led to a better understanding of the Raw Water Pricing Strategy and the main cost drivers. The charges were amended in a number of areas as a result of issues raised at the consultation meetings, but they do not represent a consensus position since DWAF must set charges in accordance with the National Water Act and the current Raw Water Pricing Strategy.

While the consultation process has significantly improved from previous years, we acknowledge that there is a need to consult earlier and will endeavour to do so in future.

The consultation process will also be addressed in the review of the Raw Water Pricing Strategy that is currently underway. This review should be completed in time to guide the setting of the 2006/7 charges.

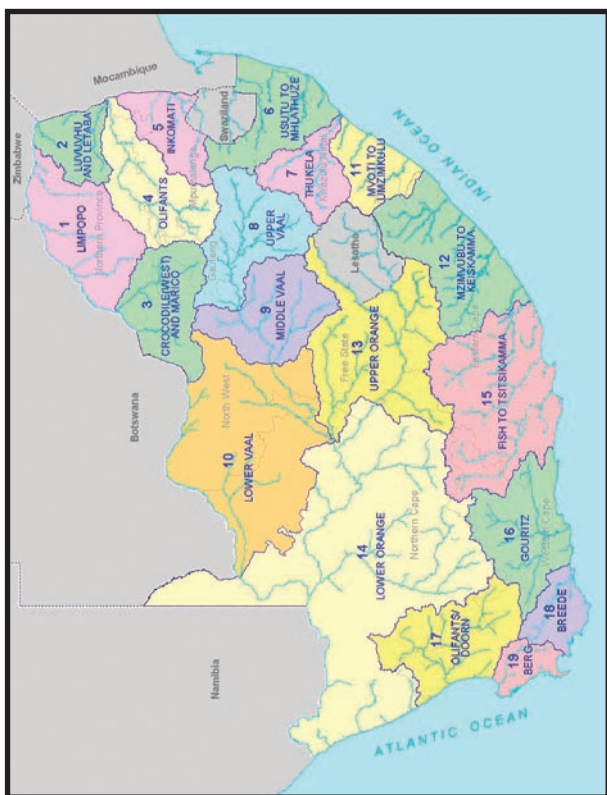


Mike Muller  
Director-General  
DEPARTMENT OF WATER AFFAIRS AND  
FORESTRY

# WRM Charge Summary by WMA

WMA	Domestic & Industrial 2005-6 Charge (c per cu m)	Agriculture 2005-6 Charge (c per cu m)	Forestry 2005-6 Charge (c per cu m)
1 Limpopo	1.35	0.98	0.73
2 Luvuvhu Letaba	1.82	1.21	0.84
3 Crocodile (w), Marico	1.08	0.92	0.73
4 Olifants	1.21	0.93	0.71
5 Inkomati	0.96	0.64	0.48
6 Usutu-Mhlatuze	0.5	0.44	0.34
7 Thukela	0.41	0.41	0.32
8 Upper Vaal	1.42	0.82	0.64
9 Middle Vaal	1.48	1.19	N/A
10 Lower Vaal	0.9	0.66	N/A
11 Mvoti-Umzimkulu	1.05	1.01	0.79
12 Mzimvubu-Keiskamma	1.53	1.06	0.73
13 Upper Orange	0.42	0.38	N/A
14 Lower Orange	0.85	0.57	N/A
15 Fish-Tsitsikamma	1.64	0.7	0.37
16 Gouritz	2.23	0.72	0.4
17 Olifants/Doorn	1.41	0.7	0.48
18 Breede	2.64	0.64	0.26
19 Berg	3.25	0.76	0.54

## Map of the Water Management Areas and provincial borders



### How to convert cents per m<sup>3</sup> to Rand per hectare

The charges listed in the table for irrigation purposes are provided in cents per m<sup>3</sup>. Should you wish to convert it to Rand per hectare, please follow the instructions below:

Take the total charge in cent per m<sup>3</sup> and divide it by 100. Take the answer and multiply it with the

water quota in m<sup>3</sup> per hectare to get to the Rand per hectare amount.

**For example:**

Total Charge: 3.70 cent per m<sup>3</sup>/ 100 = R0.037 per m<sup>3</sup>

Total charge R0.037 per m<sup>3</sup> x 3000 (water quota in m<sup>3</sup> per hectare) = R111 per hectare

**Understanding the abbreviations**

WMA	Water Management Area A map of the Water Management Area is printed in this document for easy identification.
m <sup>3</sup>	Cubic metre
Ha	Hectare
B	Bi-annually
A	Annually
TBA	To be advised
Billing Freq	Billing Frequency



Region: Mpumalanga				Charges for Irrigation Purposes		Charges for Domestic And Industrial		
WMA (refer map)	Foot Notes	Government Water Scheme Name	Scheme Management Parameter	m <sup>3</sup> Quota Per Ha	Charge - Cent Per Cubic Metre (Irrigation)	Billing Freq	Charge - Cent Per Cubic Metre (Domestic & Industrial)	Charge - Cent Per Cubic Metre (TCTA)
4		BLYDE RIVER (BLYDERIVERS-POORT DAM)	FROM THE BLYDERIVERSPOORT DAM TO LEPELLE WATER				3.58	
4		BLYDE RIVER (BLYDERIVERS-POORT DAM)	FROM THE BLYDERIVERSPOORT DAM TO OTHER USERS				17.76	
4		BLYDE RIVER (BLYDERIVERS-POORT DAM)	WATER THROUGH NEW PIPELINE AND PUMPED FROM RIVER OUT OF DAM STORAGE		1.19		3.58	

Region: Mpumalanga				Charges for Irrigation Purposes		Charges for Domestic And Industrial		
WMA (refer map)	Foot Notes	Government Water Scheme Name	Scheme Management Parameter	m <sup>3</sup> Quota Per Ha	Charge - Cent Per Cubic Metre (Irrigation)	Billing Freq	Charge - Cent Per Cubic Metre (Domestic & Industrial)	Charge - Cent Per Cubic Metre (TCTA)
4		BRONKHORSTSPRUIT DAM	FROM DAM	6200	6.50		9.39	
4		ELANDS RIVER (RHENOSTERKOP DAM)	ELANDS RIVER (RHENOSTERKOP DAM)				24.14	
4		ELANDS RIVER (RUST DE WINTER DAM)	FROM DEPARTMENTAL PURIFICATION WORKS FOR SETTLEMENT				90.48	
4		ELANDS RIVER (RUST DE WINTER DAM)	FROM THE CANAL/PIPELINE	7000	7.28			
4		ELANDS RIVER (RUST DE WINTER DAM)	FROM THE DAM				9.43	

Region: Mpumalanga							Charges for Irrigation Purposes			Charges for Domestic And Industrial	
WMA (refer map)	Foot Notes	Government Water Scheme Name	Scheme Management Parameter	m <sup>3</sup> Quota Per Ha	Charge - Cent Per Cubic Metre (Irrigation)	Billing Freq	Charge - Cent Per Cubic Metre (Domestic & Industrial)	Charge - Cent Per Cubic Metre (TCTA)			
4		GROOT DWARS RIVER (DER BROCHEN DAM)	DAM	6700	2.14		18.68				
4		KLASERIE RIVER (KLASERIE DAM)	FROM THE DAM AND THE RIVER	9900	1.34						
4		MAPOCHSGRONDEN (TONTELDOOS AND VLUGKRAAL DAMS)	CANAL	5000	6.36		51.15				
4		OHRIKSTAD RIVER (OHRIKSTAD DAM)	FROM THE DAM AND THE RIVER	7000	3.95						
4		OLIFANTS RIVER (FLAG BOSHIELO DAM)	DAM	7700	2.58		25.45				



Region: Mpumalanga				Charges for Irrigation Purposes			Charges for Domestic And Industrial	
WMA (refer map)	Foot Notes	Government Water Scheme Name	Scheme Management Parameter	m <sup>3</sup> Quota Per Ha	Charge - Cent Per Cubic Metre (Irrigation)	Billing Freq	Charge - Cent Per Cubic Metre (Domestic & Industrial)	Charge - Cent Per Cubic Metre (TCTA)
4		OLIFANTS RIVER (LOSKOP DAM)	RAW WATER FROM DAM	7700	1.00		9.07	
4		OLIFANTS RIVER (LOSKOP DAM)	RAW WATER FROM DAM TO FORMER LEBOWA FARMS	7700	1.00			
4		OLIFANTS RIVER (LOSKOP DAM)	RAW WATER FROM DAM TO HEREFORD IRRIGATION BOARD	7700	1.00			
4	SERV	OLIFANTS RIVER (LOSKOP DAM)	RAW WATER FROM DAM TO OLIFANTS RIVER I/BOARD	7700	1.00	A		

Region: Mpumalanga								
WMA (refer map)	Foot Notes	Government Water Scheme Name	Scheme Management Parameter	Charges for Irrigation Purposes		Charges for Domestic And Industrial		
				m <sup>3</sup> Quota Per Ha	Charge - Cent Per Cubic Metre (Irrigation)	Billing Freq	Charge - Cent Per Cubic Metre (Domestic & Industrial)	Charge - Cent Per Cubic Metre (TCTA)
4		OLIFANTS RIVER (LOSKOP DAM)	RAW WATER FROM DAM TO PREVIOUS SAOT FARMS	7700	1.00			
4	SERV	OLIFANTS RIVER (LOSKOP DAM)	RAW WATER TO MIDDELBURG MUNICIPALITY CONSIDERED AS FROM LOSKOP			A	9.07	
4		WATERVALS RIVER (BUFFELSKLOOF DAM)	SCHEME	7500	4.32			
5		CROCODILE RIVER (KWENA DAM)	RAW WATER FROM CROCODILE RIVER (KWENA DAM) DOWNSTREAM OF KROKODILPOORT (INCLUDING KROKODILPOORT MALELANE CANALS)		0.63		11.61	

Region: Mpumalanga					Charges for Irrigation Purposes		Charges for Domestic And Industrial	
WMA (refer map)	Foot Notes	Government Water Scheme Name	Scheme Management Parameter	m <sup>3</sup> Quota Per Ha	Charge - Cent Per Cubic Metre (Irrigation)	Billing Freq	Charge - Cent Per Cubic Metre (Domestic & Industrial)	Charge - Cent Per Cubic Metre (TCTA)
5		CROCODILE RIVER (KWENA DAM)	RAW WATER FROM CROCODILE RIVER (KWENA DAM) TO DEPT OF AGRICULTURE		0.61		11.61	
5		CROCODILE RIVER (KWENA DAM)	RAW WATER FROM CROCODILE RIVER (KWENA DAM) TO FORMER KANGWANE GOVERNMENT SERVICES		0.61	A	11.61	
5		CROCODILE RIVER (KWENA DAM)	RAW WATER FROM CROCODILE RIVER (KWENA DAM) TO LOCAL AREA COMMITTEE OF HECTORSFRUIT		0.61	A	11.61	

Region: Mpumalanga				Charges for Irrigation Purposes		Charges for Domestic And Industrial		
WMA (refer map)	Foot Notes	Government Water Scheme Name	Scheme Management Parameter	m <sup>3</sup> Quota Per Ha	Charge - Cent Per Cubic Metre (Irrigation)	Billing Freq	Charge - Cent Per Cubic Metre (Domestic & Industrial)	Charge - Cent Per Cubic Metre (TCTA)
5		CROCODILE RIVER (KWENA DAM)	RAW WATER FROM CROCODILE RIVER (KWENA DAM) TO MUNICIPALITY OF MALELANE		0.61	A	11.61	
5		CROCODILE RIVER (KWENA DAM)	RAW WATER FROM CROCODILE RIVER (KWENA DAM) TO MUNICIPALITY OF NELSPRUIT		0.61	A	11.61	
5		CROCODILE RIVER (KWENA DAM)	RAW WATER FROM CROCODILE RIVER (KWENA DAM) TO OTHER CONSUMERS		0.61		11.61	

Region: Mpumalanga				Charges for Irrigation Purposes			Charges for Domestic And Industrial	
WMA (refer map)	Foot Notes	Government Water Scheme Name	Scheme Management Parameter	m <sup>3</sup> Quota Per Ha	Charge - Cent Per Cubic Metre (Irrigation)	Billing Freq	Charge - Cent Per Cubic Metre (Domestic & Industrial)	Charge - Cent Per Cubic Metre (TCTA)
5		CROCODILE RIVER (KWENA DAM)	RAW WATER FROM CROCODILE RIVER (KWENA DAM) TO TVL SUGAR CORPORATION LIMITED		0.61	A	11.61	
5		CROCODILE RIVER (KWENA DAM)	RAW WATER FROM CROCODILE RIVER (KWENA DAM) UPSTREAM OF KROKODILPOORT		0.63		11.61	
5		KOMATI RIVER (DRIEKOPPIES & MAGUGA DAMS)	FROM THE DAM: COMMERCIAL USERS		3.27			

Region: Mpumalanga					Charges for Irrigation Purposes			Charges for Domestic And Industrial	
WMA (refer map)	Foot Notes	Government Water Scheme Name	Scheme Management Parameter	m <sup>3</sup> Quota Per Ha	Charge - Cent Per Cubic Metre (Irrigation)	Billing Freq	Charge - Cent Per Cubic Metre (Domestic & Industrial)	Charge - Cent Per Cubic Metre (TCTA)	
5		KOMATI RIVER (DRIEKOPPIES & MAGUGA DAMS)	FROM THE DAM: RESOURCE POOR FARMERS		0.71				
5		SAND RIVER (WITKLIP DAM)	FROM THE DAM		6.89				
5	SERV	SAND RIVER (WITKLIP DAM)	FROM THE DAM: AVELON FARMS		6.89	A			
5	SERV	SAND RIVER (WITKLIP DAM)	FROM THE DAM: E.J. KAY		6.89	A			

## Foot notes and additional comments

Foot notes	
Serv	In case where a zero charge is to be applied in respect of volumes smaller or equal to servitudes volume, only the charges to be applied per every one m <sup>3</sup> in excess of the servitude arrangement is reflected.
Addition comments	
1	Charges for domestic and industrial use: to be applied per every one m <sup>3</sup> .
2	Charges for irrigation purpose: To be applied per every one m <sup>3</sup> .
3	Charges for the TCTA: To be applied per every one m <sup>3</sup> .
4	Any changes made to the charges, in the brochures, will be updated and published on the DWAF- website. These include: <ul style="list-style-type: none"> <li>a Additional charges</li> <li>b Changes to the charges incorporated in the brochure:               <ul style="list-style-type: none"> <li>- Charges that are no longer to be applied (declared as OBSOLETE),</li> <li>- Changes to charges,</li> <li>- Changes to volume variables.</li> </ul> </li> </ul>
5	The charge for Resource Poor Farmers normally reflects the full amount without consideration of subsidies. Applicable subsidies are given as discounts during the billing process.

### For more information, contact your nearest office of the Department of Water Affairs and Forestry

#### Mpumalanga Region Office

Mr Johann van Aswegen  
Tel: (013) 932 2042/47

#### Free State Regional Office

Mr Tseliso Ntili  
Tel: (051) 405 9281

#### KwaZulu-Natal Regional Office

Mr JGG Hansmann  
Tel: (031) 336 2700

#### Gauteng Regional Office

Mr Hennie Smith  
Tel: (012) 392 1301

#### Limpopo Regional Office

Mr Alson Matukane  
Tel: (051) 290 1215

#### North West Regional Office

Mr Chadwick Lobakeng  
Tel: (018) 384 3270/6

#### Eastern Cape Regional Office

Mr Zolile Keke  
Mr Dewald Coetzee  
Tel: (043) 603 4352

#### Northern Cape Regional Office

Mr LJ Snyders  
Tel: (053) 831 4125

#### Western Cape Regional Office

Mr Rashid Khan  
Tel: (021) 950 7100