



Water Use Charges for Government Water Schemes and Water Resource Management Charges

2005/2006

WESTERN CAPE REGION



water & forestry

Department:
Water Affairs and Forestry
REPUBLIC OF SOUTH AFRICA



Preface

This brochure contains the Water Resource Management and Water Consumptive charges that will come into effect from 1 April 2005.

Before finalising these charges, consultations were held with key national and local stakeholders including amongst others SALGA, SAAWU, Agri-SA, TAU, NAFU, and Forestry SA.

The consultation meetings led to a better understanding of the Raw Water Pricing Strategy and the main cost drivers. The charges were amended in a number of areas as a result of issues raised at the consultation meetings, but they do not represent a consensus position since DWAF must set charges in accordance with the National Water Act and the current Raw Water Pricing Strategy.

While the consultation process has significantly improved from previous years, we acknowledge that there is a need to consult earlier and will endeavour to do so in future.

The consultation process will also be addressed in the review of the Raw Water Pricing Strategy that is currently underway. This review should be completed in time to guide the setting of the 2006/7 charges.

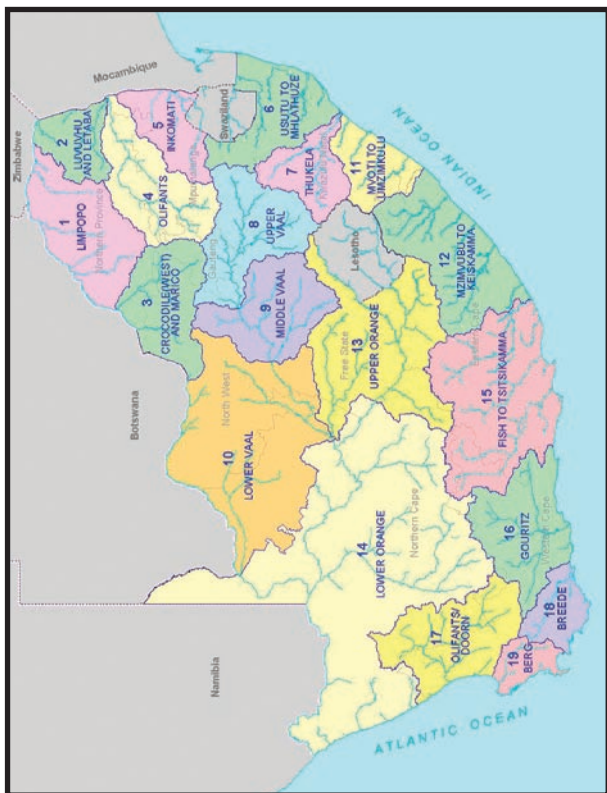


Mike Muller
Director-General
DEPARTMENT OF WATER AFFAIRS AND
FORESTRY

WRM Charge Summary by WMA

| WMA | Domestic & Industrial 2005-6 Charge (c per cu m) | Agriculture 2005-6 Charge (c per cu m) | Forestry 2005-6 Charge (c per cu m) |
|-------------------------|--|--|-------------------------------------|
| 1 Limpopo | 1.35 | 0.98 | 0.73 |
| 2 Luvuvhu Letaba | 1.82 | 1.21 | 0.84 |
| 3 Crocodile (w), Marico | 1.08 | 0.92 | 0.73 |
| 4 Olifants | 1.21 | 0.93 | 0.71 |
| 5 Inkomati | 0.96 | 0.64 | 0.48 |
| 6 Usutu-Mhlatauze | 0.5 | 0.44 | 0.34 |
| 7 Thukela | 0.41 | 0.41 | 0.32 |
| 8 Upper Vaal | 1.42 | 0.82 | 0.64 |
| 9 Middle Vaal | 1.48 | 1.19 | N/A |
| 10 Lower Vaal | 0.9 | 0.66 | N/A |
| 11 Mvoti-Umzimkulu | 1.05 | 1.01 | 0.79 |
| 12 Mzimvubu-Keiskamma | 1.53 | 1.06 | 0.73 |
| 13 Upper Orange | 0.42 | 0.38 | N/A |
| 14 Lower Orange | 0.85 | 0.57 | N/A |
| 15 Fish-Tsitsikamma | 1.64 | 0.7 | 0.37 |
| 16 Gouritz | 2.23 | 0.72 | 0.4 |
| 17 Olifants/Doorn | 1.41 | 0.7 | 0.48 |
| 18 Breede | 2.64 | 0.64 | 0.26 |
| 19 Berg | 3.25 | 0.76 | 0.54 |

Map of the Water Management Areas and provincial borders



How to convert cents per m³ to Rand per hectare

The charges listed in the table for irrigation purposes are provided in cents per m³. Should you wish to convert it to Rand per hectare, please follow the instructions below:

Take the total charge in cent per m³ and divide it by 100. Take the answer and multiply it with the



water quota in m³ per hectare to get to the Rand per hectare amount.

For example:

Total Charge: 3.70 cent per m³/ 100 = R0.037 per m³

Total charge R0.037 per m³ x 3000 (water quota in m³ per hectare) = R111 per hectare

Understanding the abbreviations

| | |
|----------------|--|
| WMA | Water Management Area A map of the Water Management Area is printed in this document for easy identification. |
| m ³ | Cubic metre |
| Ha | Hectare |
| B | Bi-annually |
| A | Annually |
| TBA | To be advised |
| Billing Freq | Billing Frequency |



| Region: Western Cape | | | | Charges for Irrigation Purposes | | | Charges for Domestic And Industrial | |
|----------------------|------------|-----------------------------------|--|---------------------------------|--|--------------|---|--------------------------------------|
| WMA (refer map) | Foot Notes | Government Water Scheme Name | Scheme Management Parameter | m ³ Quota Per Ha | Charge - Cent Per Cubic Metre (Irrigation) | Billing Freq | Charge - Cent Per Cubic Metre (Domestic & Industrial) | Charge - Cent Per Cubic Metre (TCTA) |
| 16 | | BRAND RIVER (MIERT JIESKRAAL DAM) | DAM | 7000 | 6.13 | | | |
| 16 | | BUFFALO RIVER (FLORISKRAAL-DAM) | SCHEME | 7620 | 1.23 | | | |
| 16 | | CORDIERS RIVER (OUKLOOF DAM) | DAM | 9000 | 4.26 | | | |
| 16 | | DUIVENHOKS RIVER (DUIVENHOKS DAM) | FROM DUIVENHOKS RIVER (DUIVENHOKS DAM) | 6000 | 0.87 | | 2.75 | |
| 16 | | GAMKA RIVER (BEAUFORT WEST DAM) | DAM | | | | 57.08 | |
| 16 | | GAMKA RIVER (GAMKA-POORT DAM) | DAM | 7900 | 2.67 | | | |

| Region: Western Cape | | | | | | | | |
|----------------------|---------------|--|--------------------------------|---------------------------------|---|--|---|--|
| WMA (refer map) | Foot Notes | Government Water Scheme Name | Scheme Management Parameter | Charges for Irrigation Purposes | | Charges for Domestic And Industrial | | |
| | | | | m ³ Quota Per Ha | Charge - Cent Per Cubic Metre (Irrigation) | Billing Freq | Charge - Cent Per Cubic Metre (Domestic & Industrial) | Charge - Cent Per Cubic Metre (TCTA) |
| 16 | | GOUKOU RIVER (GROOTBOS- BERG DAM) | DAM | 7000 | 1.05 | | 21.00 | |
| 16 | | HARTENBOS RIVER (HARTBEEKJUIL DAM) | DAM | 6000 | 2.79 | | 11.95 | |
| 16 | | KAMANASSIE RIVER (KAMANASIE DAM) | SCHEME | 6500 | 1.14 | | | |
| 16 | | KORENTE-VETTE RIVER (KORENTE-VETTE DAM) | CANAL | 7000 | 0.67 | | 5.17 | |
| 16 | | LEEU RIVER (LEEU-GAMKA DAM) | SCHEME | 11000 | 2.09 | | | |
| 16 | | MOSSEL BAY - KLIPHEUWEL DAM | SCHEME | | | | 78.55 | |

| Region: Western Cape | | | | Charges for Irrigation Purposes | | | Charges for Domestic And Industrial | |
|----------------------|------------|---------------------------------|--|---------------------------------|--|--------------|---|--------------------------------------|
| WMA (refer map) | Foot Notes | Government Water Scheme Name | Scheme Management Parameter | m ³ Quota Per Ha | Charge - Cent Per Cubic Metre (Irrigation) | Billing Freq | Charge - Cent Per Cubic Metre (Domestic & Industrial) | Charge - Cent Per Cubic Metre (TCTA) |
| 16 | | MOSSEL BAY - WOLWEDANS DAM | FROM THE MOSSEL BAY - WOLWEDANS DAM (BOLTONS & MOSSREF EXCLUDED) | | 7.67 | | 78.55 | |
| 16 | | MOSSEL BAY - WOLWEDANS DAM | TO BOLTONS FROM THE MOSSEL BAY - WOLWEDANS DAM | | | | 78.55 | |
| 16 | SERV | MOSSEL BAY - WOLWEDANS DAM | TO MOSSREF FROM THE MOSSEL BAY - WOLWEDANS DAM | | | A | 78.55 | |
| 16 | | OLIFANTS RIVER (STOMPDRIFT DAM) | CANAL | | | | 42.09 | |
| 16 | | OLIFANTS RIVER (STOMPDRIFT DAM) | DAM | | | | 6.78 | |

| Region: Western Cape | | | | Charges for Irrigation Purposes | | | Charges for Domestic And Industrial | |
|----------------------|---------------|------------------------------------|--------------------------------|---------------------------------|---|-----------------|---|--|
| WMA (refer map) | Foot Notes | Government Water Scheme Name | Scheme Management Parameter | m ³ Quota Per Ha | Charge - Cent Per Cubic Metre (Irrigation) | Billing Freq | Charge - Cent Per Cubic Metre (Domestic & Industrial) | Charge - Cent Per Cubic Metre (TCTA) |
| 16 | | OLIFANTS RIVER (STOMPDRIFT DAM) | FROM SCHEME FOR STAGE 1 | 15300 | 1.21 | | | |
| 16 | | OLIFANTS RIVER (STOMPDRIFT DAM) | FROM SCHEME FOR STAGE 2 | 22360 | 1.21 | | | |
| 16 | | OLIFANTS RIVER (STOMPDRIFT DAM) | FROM SCHEME FOR STAGE 3 | 3660 | 1.21 | | | |
| 16 | | ROODEFONTEIN DAM | SCHEME | | 2.60 | | 70.16 | |
| 16 | | TIERKLOOF DAM | SCHEME | | 6.42 | | 11.66 | |

| Region: Western Cape | | | | Charges for Irrigation Purposes | | | Charges for Domestic And Industrial | |
|----------------------|------------|--|--|---------------------------------|--|--------------|---|--------------------------------------|
| WMA (refer map) | Foot Notes | Government Water Scheme Name | Scheme Management Parameter | m ³ Quota Per Ha | Charge - Cent Per Cubic Metre (Irrigation) | Billing Freq | Charge - Cent Per Cubic Metre (Domestic & Industrial) | Charge - Cent Per Cubic Metre (TCTA) |
| 17 | | OLIFANTS RIVER (VAN RHYNSDORP - CLANWILLIAM DAM) | FROM SCHEME | 12200 | 2.15 | | 3.38 | |
| 17 | | OLIFANTS RIVER (VAN RHYNSDORP - CLANWILLIAM DAM) | RIVER ABSTRACTION BETWEEN CLANWILLIAM AND BULSHOEK DAM | 12200 | 1.73 | | | |
| 17 | | OLIFANTS RIVER (VANRHYNSDORP - BULSHOEK DAM) | LOWER OLIFANTS RIVER IRRIGATION BOARD - EBENEZER SETTLEMENT | | 2.19 | | | |
| 17 | | OLIFANTS RIVER (VANRHYNSDORP - BULSHOEK DAM) | RAW WATER FROM THE DAM TO WESTERN CAPE PROVINCIAL ADMINISTRATION'S FISH BREEDING STATION | | | | 5.53 | |

| Region: Western Cape | | | | | | | | |
|----------------------|---------------|--|--|---------------------------------|---|-----------------|---|--|
| WMA (refer map) | Foot Notes | Government Water Scheme Name | Scheme Management Parameter | Charges for Irrigation Purposes | Charges for Domestic And Industrial | | | |
| | | | | m ³ Quota Per Ha | Charge - Cent Per Cubic Metre (Irrigation) | Billing Freq | Charge - Cent Per Cubic Metre (Domestic & Industrial) | Charge - Cent Per Cubic Metre (TCTA) |
| 17 | | OLIFANTS RIVER (VANRHYNSDORP - BULSHOEK DAM) | SCHEME | 12200 | 2.19 | | 20.33 | |
| 18 | | BREEDE RIVER (GREATER BRANDVLEI AND KWAGGASKLOOF DAMS) | BREEDE RIVER CONSERVATION BOARD | | 0.77 | | | |
| 18 | | BREEDE RIVER (GREATER BRANDVLEI AND KWAGGASKLOOF DAMS) | FROM ANY OF THE DAMS TO BRANDVLEI WINE CELLARS | | | | 15.9 | |
| 18 | | BREEDE RIVER (GREATER BRANDVLEI AND KWAGGASKLOOF DAMS) | PURCHASED WATER RIGHTS & OTHER BOARDS (EXCLUDING BREEDE RIVER CONSERVATION BOARD) | | 2.13 | | | |
| 18 | | BUFFELJAGTS RIVER (BUFFELJAGTS DAM) | FROM THE DAM | 6100 | 1.35 | | 11.16 | |

| Region: Western Cape | | | | Charges for Irrigation Purposes | | | Charges for Domestic And Industrial | |
|----------------------|------------|---------------------------------|---|---------------------------------|--|--------------|---|--------------------------------------|
| WMA (refer map) | Foot Notes | Government Water Scheme Name | Scheme Management Parameter | m ³ Quota Per Ha | Charge - Cent Per Cubic Metre (Irrigation) | Billing Freq | Charge - Cent Per Cubic Metre (Domestic & Industrial) | Charge - Cent Per Cubic Metre (TCTA) |
| 18 | | ELANDS RIVER (ELANDS-KLOOF DAM) | FROM THE DISTRIBUTION SYSTEM (CANAL & PIPELINE) FROM THE ELANDS RIVER (ELANDS-KLOOF DAM) | | | | 43.48 | |
| 18 | | ELANDS RIVER (ELANDS-KLOOF DAM) | RAW WATER FROM THE DAM | | | | 13.58 | |
| 18 | | ELANDS RIVER (ELANDS-KLOOF DAM) | TO VILLIERSDORP CO-OPERATIVE LTD - FROM THE DISTRIBUTION SYSTEM (CANAL & PIPELINE) FROM THE ELANDS RIVER (ELANDS-KLOOF DAM) | | | | 41.02 | |

| Region: Western Cape | | | | Charges for Irrigation Purposes | | | Charges for Domestic And Industrial | |
|----------------------|---------------|------------------------------------|---|---------------------------------|---|-----------------|---|--|
| WMA (refer map) | Foot Notes | Government Water Scheme Name | Scheme Management Parameter | m ³ Quota Per Ha | Charge - Cent Per Cubic Metre (Irrigation) | Billing Freq | Charge - Cent Per Cubic Metre (Domestic & Industrial) | Charge - Cent Per Cubic Metre (TCTA) |
| 18 | | ELANDS RIVER (ELANDS-KLOOF DAM) | TO VILLIERSDORP MUNICIPALITY FROM THE DISTRIBUTION SYSTEM (CANAL & PIPELINE) FROM THE ELANDS RIVER (ELANDS-KLOOF DAM) | | | | 41.02 | |
| 18 | | KEISIES RIVER (PIETERSFONTEIN DAM) | SCHEME | 2500 | 3.11 | | | |
| 18 | | KINGNA RIVER (POORTJIESKLOOF DAM) | SCHEME | 4500 | 5.11 | | | |
| 18 | | KONINGS RIVER (KLIPBERG DAM) | SCHEME | 7500 | 2.26 | | 2.12 | |

| Region: Western Cape | | | | Charges for Irrigation Purposes | | Charges for Domestic And Industrial | | |
|----------------------|------------|---|-------------------------------|---------------------------------|--|-------------------------------------|---|--------------------------------------|
| WMA (refer map) | Foot Notes | Government Water Scheme Name | Scheme Management Parameter | m ³ Quota Per Ha | Charge - Cent Per Cubic Metre (Irrigation) | Billing Freq | Charge - Cent Per Cubic Metre (Domestic & Industrial) | Charge - Cent Per Cubic Metre (TCTA) |
| 18 | | PALMIET RIVER (ROCKVIEW & KOGELBERG DAMS) - [WMA BREEDE] | PALMIET SCHEME TO BEUKES FARM | 6000 | 15.28 | | | |
| 18 | | RIVIERSONDEREND-BERG RIVER (THEEWATERSKLOOF DAM AND JONKERSHOEK TUNNEL SYSTEM) - [WMA BREEDE] | ABSTRACTIONS FROM DAM | | 1.48 | | 4.39 | |
| 18 | | SANDDRIFT RIVER (ROODE ELSBERG AND LAKENVALLEI DAMS) | DISTRIBUTION SYSTEM | | | | 18.65 | |
| 18 | | SANDDRIFT RIVER (ROODE ELSBERG AND LAKENVALLEI DAMS) | SCHEME | 6000 | 1.66 | | | |

| Region: Western Cape | | | | | | | Charges for Domestic And Industrial | | |
|----------------------|---------------|--|---|---------------------------------|---|--|-------------------------------------|---|--|
| WMA (refer map) | Foot Notes | Government Water Scheme Name | Scheme Management Parameter | Charges for Irrigation Purposes | | | Billing Freq | Charge - Cent Per Cubic Metre (Domestic & Industrial) | Charge - Cent Per Cubic Metre (TCTA) |
| | | | | m ³ Quota Per Ha | Charge - Cent Per Cubic Metre (Irrigation) | | | | |
| 18 | | SANDDRIFT RIVER (ROODE ELSBURG AND LAKENVALLEI DAMS) | SCHEME ORIGINAL SCHEDULING | 1500 | 1.66 | | | | |
| 18 | | VALSCH RIVER (BEN ETIEVE DAM) | SCHEME | 6000 | 0.9 | | | | |
| 19 | | BERG RIVER (VOELVLEI DAM) | BOREHOLE (SALDANHA UNDERGROUND) | | | | 9.11 | | |
| 19 | | BERG RIVER (VOELVLEI DAM) | DAM | | | | 7.99 | | |
| 19 | | BERG RIVER (VOELVLEI DAM) | FROM TWENTY-FOUR RIVERS CANAL TO THE IRRIGATION BOARD | 8500 | 1.16 | | | | |
| 19 | | BERG RIVER (VOELVLEI DAM) | IRRIGATION FROM BERG RIVER DOWNSTREAM OF THE VOELVLEI DAM | 3000 | 4.72 | | | | |

| Region: Western Cape | | | | Charges for Irrigation Purposes | | | Charges for Domestic And Industrial | |
|----------------------|------------|---|---|---------------------------------|--|--------------|---|--------------------------------------|
| WMA (refer map) | Foot Notes | Government Water Scheme Name | Scheme Management Parameter | m ³ Quota Per Ha | Charge - Cent Per Cubic Metre (Irrigation) | Billing Freq | Charge - Cent Per Cubic Metre (Domestic & Industrial) | Charge - Cent Per Cubic Metre (TCTA) |
| 19 | | BERG RIVER (VOELVLEI DAM) | RAW WATER FROM MISVERSTAND DAM | | | | 9.11 | |
| 19 | SERV | BERG RIVER (VOELVLEI DAM) | RAW WATER FROM THE DAM TO PRETORIA PORTLAND CEMENT CO LTD | | | A | 7.99 | |
| 19 | | BERG RIVER (VOELVLEI DAM) | RAW WATER FROM VOELVLEI DAM TO CAPE TOWN MUNICIPALITY | | | | 30.53 | |
| 19 | SERV | BERG RIVER (VOELVLEI DAM) | RAW WATER FROM VOELVLEI DAM TO PIKETBERG MUNICIPALITY | | | A | 7.99 | |
| 19 | | RIVIERSONDEREND-BERG RIVER (THEEWATERSKLOOF DAM AND JONKERSHOEK TUNNEL SYSTEM) - [WMA BERG] | AT FRANSCHHOEK, DASBOS & STELLENBOSCH TUNNEL | | 5.27 | | 29.77 | |

| Region: Western Cape | | | | Charges for Irrigation Purposes | | | Charges for Domestic And Industrial | |
|----------------------|------------|--|---|---------------------------------|--|--------------|---|--------------------------------------|
| WMA (refer map) | Foot Notes | Government Water Scheme Name | Scheme Management Parameter | m ³ Quota Per Ha | Charge - Cent Per Cubic Metre (Irrigation) | Billing Freq | Charge - Cent Per Cubic Metre (Domestic & Industrial) | Charge - Cent Per Cubic Metre (TCTA) |
| 19 | | RVIERSONDEREND-BERG RIVER (THEEWATERSKLOOF DAM AND JONKERSHOEK TUNNEL SYSTEM) - [WMA BERG] | AT FRANSCHHOEK, DASBOS & STELLENBOSCH TUNNEL - COMPENSATION RELEASE | | 5.27 | | | |
| 19 | | RVIERSONDEREND-BERG RIVER (THEEWATERSKLOOF DAM AND JONKERSHOEK TUNNEL SYSTEM) - [WMA BERG] | AT FRANSCHHOEK, DASBOS & STELLENBOSCH TUNNEL OUTLETS TO BERG RIVER-SUB DISTRICT 1 | | 5.27 | | | |
| 19 | | RVIERSONDEREND-BERG RIVER (THEEWATERSKLOOF DAM AND JONKERSHOEK TUNNEL SYSTEM) - [WMA BERG] | AT FRANSCHHOEK, DASBOS & STELLENBOSCH TUNNEL OUTLETS TO BERG RIVER-SUB DISTRICT 2 | | 5.27 | | | |
| 19 | | RVIERSONDEREND-BERG RIVER (THEEWATERSKLOOF DAM AND JONKERSHOEK TUNNEL SYSTEM) - [WMA BERG] | AT FRANSCHHOEK, DASBOS & STELLENBOSCH TUNNEL OUTLETS TO BERG RIVER-SUB DISTRICT 3 | | 5.27 | | | |

| Region: Western Cape | | | | Charges for Irrigation Purposes | | Charges for Domestic And Industrial | | |
|----------------------|---------------|--|--|---------------------------------|---|-------------------------------------|---|--|
| WMA (refer map) | Foot Notes | Government Water Scheme Name | Scheme Management Parameter | m ³ Quota Per Ha | Charge - Cent Per Cubic Metre (Irrigation) | Billing Freq | Charge - Cent Per Cubic Metre (Domestic & Industrial) | Charge - Cent Per Cubic Metre (TCTA) |
| 19 | | RIVIERSONDEREND-BERG RIVER (THEEWATERSKLOOF DAM AND JONKERSHOEK TUNNEL SYSTEM) - [WMA BERG] | AT FRANSCHHOEK, DASBOS & STELLENBOSCH TUNNEL OUTLETS TO OTHER CONSUMERS | | | | 26.20 | |
| 19 | SERV | RIVIERSONDEREND-BERG RIVER (THEEWATERSKLOOF DAM AND JONKERSHOEK TUNNEL SYSTEM) - [WMA BERG] | AT FRANSCHHOEK, DASBOS & STELLENBOSCH TUNNEL OUTLETS TO PAARL MUNICIPALITY - SUMMER | | | A | 26.20 | |
| 19 | SERV | RIVIERSONDEREND-BERG RIVER (THEEWATERSKLOOF DAM AND JONKERSHOEK TUNNEL SYSTEM) - [WMA BERG] | AT FRANSCHHOEK, DASBOS & STELLENBOSCH TUNNEL OUTLETS TO PAARL MUNICIPALITY - WINTER | | | A | 26.20 | |

Foot notes and additional comments

| Foot notes | |
|-------------------|---|
| Serv | In case where a zero charge is to be applied in respect of volumes smaller or equal to servitudes volume, only the charges to be applied per every one m ³ in excess of the servitude arrangement is reflected. |
| Addition comments | |
| 1 | Charges for domestic and industrial use: to be applied per every one m ³ . |
| 2 | Charges for irrigation purpose: To be applied per every one m ³ . |
| 3 | Charges for the TCTA: To be applied per every one m ³ . |
| 4 | Any changes made to the charges, in the brochures, will be updated and published on the DWAF- website. These include: <ul style="list-style-type: none"> a Additional charges b Changes to the charges incorporated in the brochure: <ul style="list-style-type: none"> - Charges that are no longer to be applied (declared as OBSOLETE), - Changes to charges, - Changes to volume variables. |
| 5 | The charge for Resource Poor Farmers normally reflects the full amount without consideration of subsidies. Applicable subsidies are given as discounts during the billing process. |

For more information, contact your nearest office of the Department of Water Affairs and Forestry

Mpumalanga Region Office

Mr Johann van Aswegen
Tel: (013) 932 2042/47

Free State Regional Office

Mr Tseliso Ntili
Tel: (051) 405 9281

KwaZulu-Natal Regional Office

Mr JGG Hansmann
Tel: (031) 336 2700

Gauteng Regional Office

Mr Hennie Smith
Tel: (012) 392 1301

Limpopo Regional Office

Mr Alson Matukane
Tel: (051) 290 1215

North West Regional Office

Mr Chadwick Lobakeng
Tel: (018) 384 3270/6

Eastern Cape Regional Office

Mr Zolile Keke or
Mr Dewald Coetzee
Tel: (043) 603 4352

Northern Cape Regional Office

Mr LJ Snyders
Tel: (053) 831 4125

Western Cape Regional Office

Mr Rashid Khan
Tel: (021) 950 7100