



**water & sanitation**  
 Department  
 Water and Sanitation  
 REPUBLIC OF SOUTH AFRICA

**REPUBLIC OF SOUTH AFRICA**  
**DEPARTMENT OF WATER AND SANITATION**  
**CD:CM CONSTRUCTION PROJECTS MONTHLY PROGRESS SUMMARY**

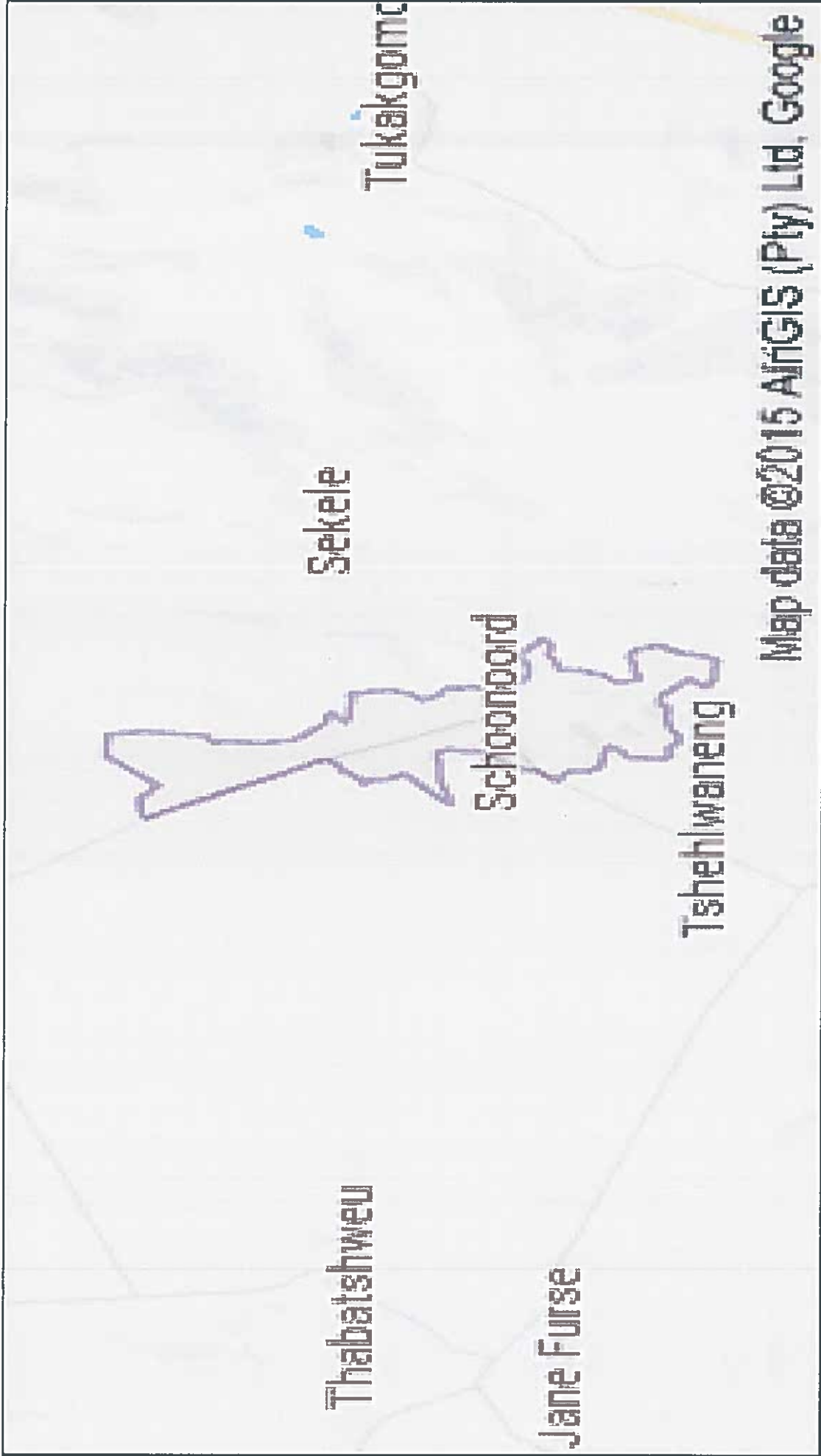
REPORT NO.  
35  
 REPORT DATE  
31-Jul-19

**PROJECT LOCALE**

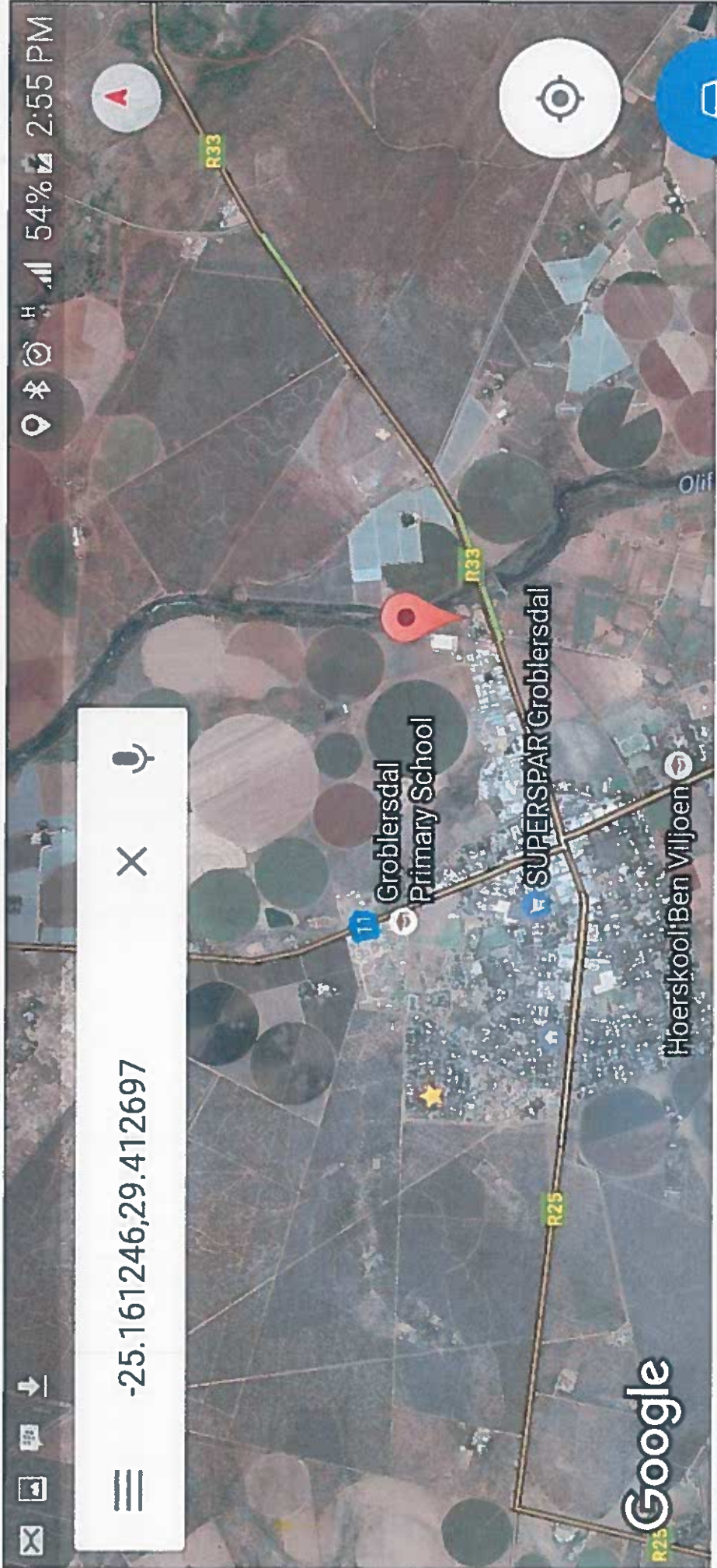




PROJECT LOCALE



**PROJECT LOCALE**



☰    -25.161246,29.412697    ✕    🎤

**Dropped pin**  
 near Groblersdal

**39 min**



**water & sanitation**  
 Department  
 Water and Sanitation  
 REPUBLIC OF SOUTH AFRICA

**REPUBLIC OF SOUTH AFRICA  
 DEPARTMENT OF WATER AND SANITATION  
 CD:CM CONSTRUCTION PROJECTS MONTHLY PROGRESS SUMMARY**

REPORT NO.  
41  
 REPORT DATE  
05-Aug-19

**PROJECT LOCALE**



**water & sanitation**  
 Department  
 Water and Sanitation  
 REPUBLIC OF SOUTH AFRICA

**REPUBLIC OF SOUTH AFRICA  
 DEPARTMENT OF WATER AND SANITATION  
 CD:CM CONSTRUCTION PROJECTS MONTHLY PROGRESS SUMMARY**

REPORT NO.  
25  
 REPORT DATE  
08-Aug-18

**PROJECT LOCALE**





**water & sanitation**  
 Department  
 Water and Sanitation  
 REPUBLIC OF SOUTH AFRICA

**REPUBLIC OF SOUTH AFRICA**  
**DEPARTMENT OF WATER AND SANITATION**  
**CD:CM CONSTRUCTION PROJECTS MONTHLY PROGRESS SUMMARY**

REPORT NO.  
50

REPORT DATE  
31-Jul-10

**PROJECT LOCALE**



Map data ©2010 AirGIS (Pty) Ltd, Google Imagery ©2010 TerraMetrics Terms of Use Report a map error



water & sanitation  
Department  
Water and Sanitation  
REPUBLIC OF SOUTH AFRICA

REPUBLIC OF SOUTH AFRICA  
DEPARTMENT OF WATER AND SANITATION  
CD-CM CONSTRUCTION PROJECTS MONTHLY PROGRESS SUMMARY

REPORT NO

07

REPORT DATE

31-Jul-19

PROJECT LOCALE

