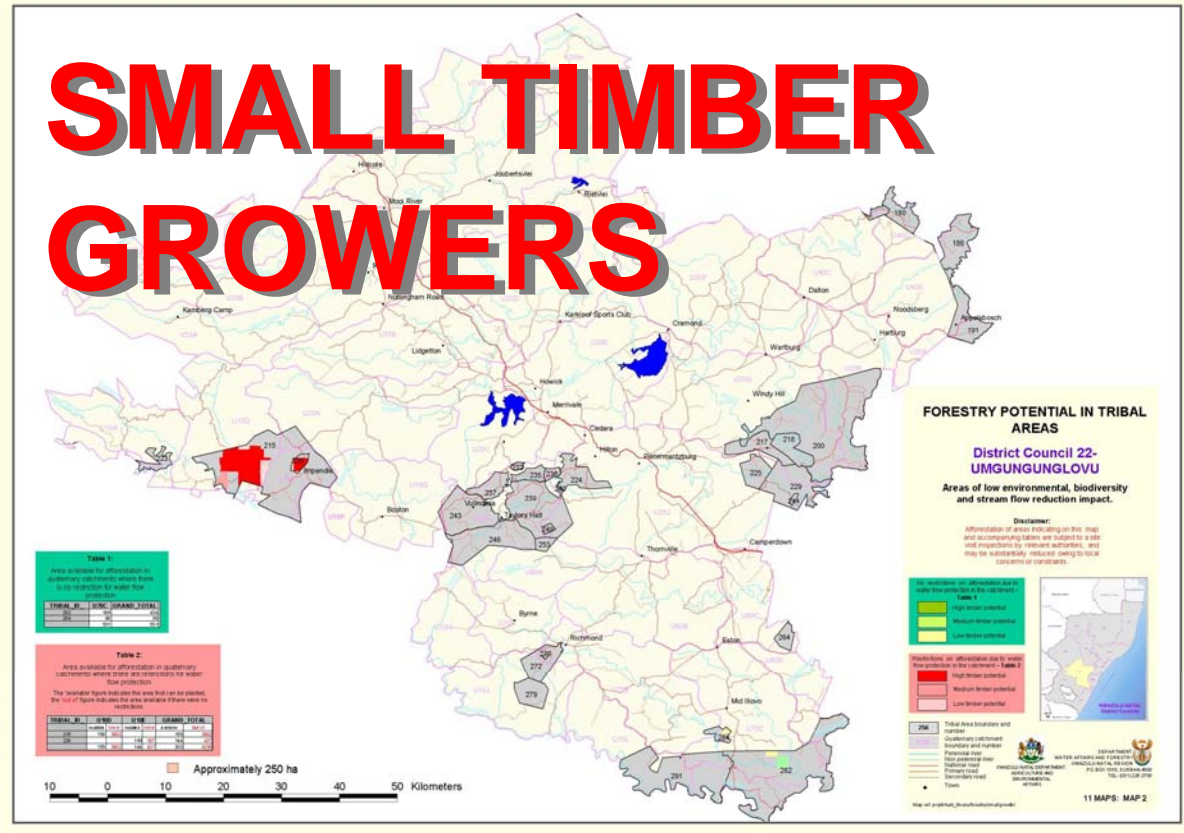
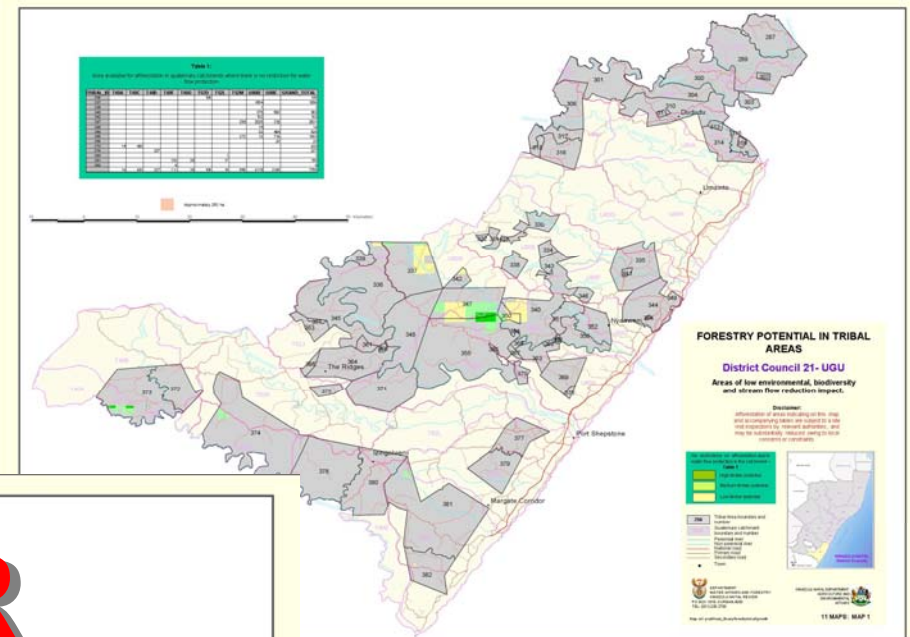


MAPS

for

SMALL TIMBER GROWERS



KZN DEPARTMENT OF AGRICULTURE AND ENVIRONMENTAL AFFAIRS

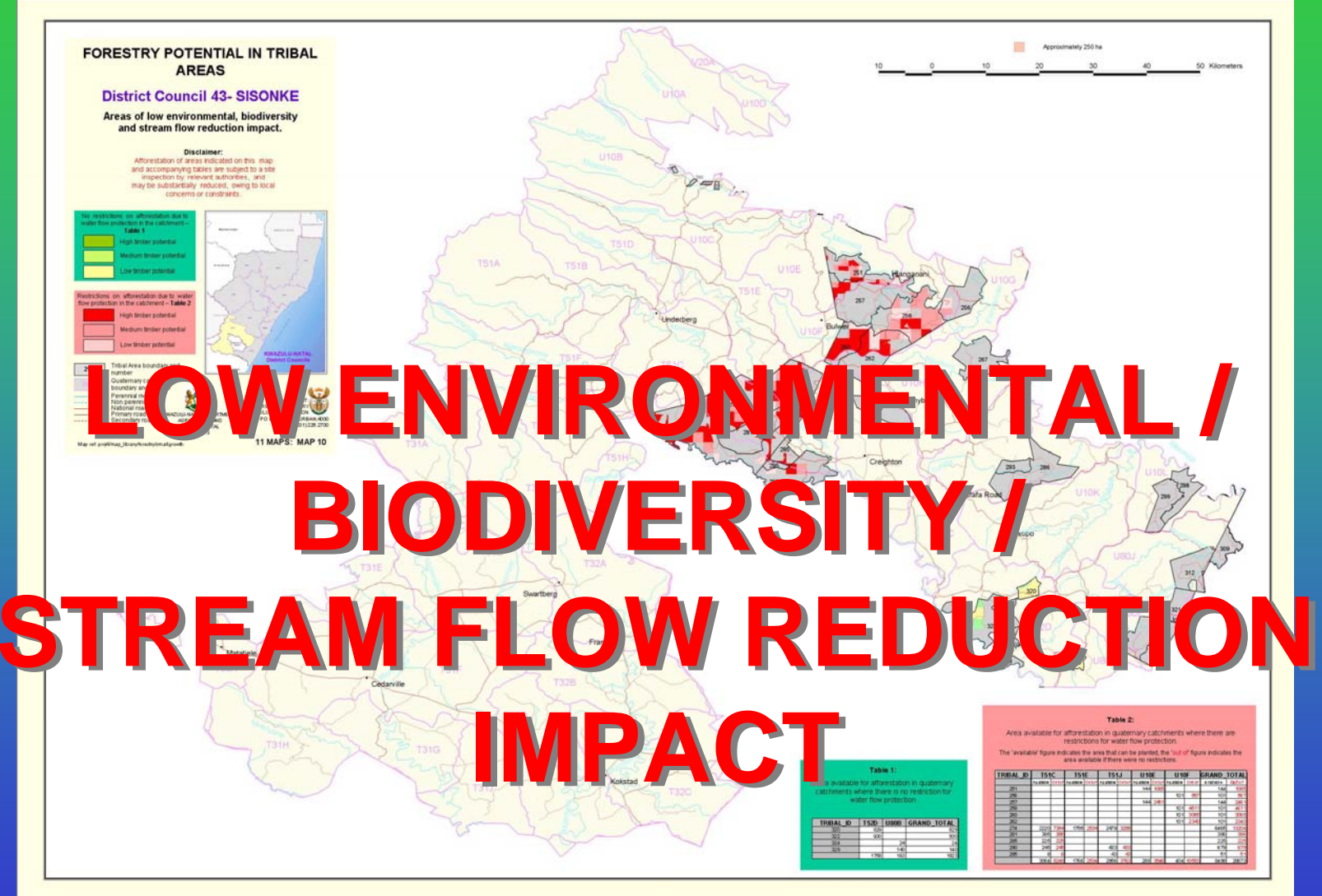


DEPARTMENT OF WATER AFFAIRS AND FORESTRY KZN REGION



J.C. PERKINS

indicating



LOW ENVIRONMENTAL / BIODIVERSITY / STREAM FLOW REDUCTION IMPACT



GOVERNMENT PARTICIPANTS

- ◆ DEPARTMENT OF WATER AFFAIRS AND FORESTRY
- ◆ KZN DEPARTMENT OF AGRICULTURE AND ENVIRONMENTAL AFFAIRS
- ◆ EZEMVELO KZN WILDLIFE

NON-GOVERNMENT PARTICIPANTS



FORESTRY SOUTH AFRICA



**SMALL
MEDIUM
LARGE
GROWERS**



**CONSULTANTS WORKING
FOR DWAF AS OBSERVERS**

OVERLAYS:

- Precipitation
- Temperature
- Soil Values (Depth & Composition)
- Land Potential (Agricultural Suitability)
- Altitude

15 12:37 PM



CONSERVATION VALUE:

- **EKZN Wildlife Conservation Plan**
- **Protected areas with a buffer zone of 1km**

WATER RESTRAINTS :

- **Water Bodies**
- **Quaternary sub – catchments**
- **Catchments closed on account of water restraints**
- **The extent to which additional planting can be accommodated (tables)**

**One map per
DISTRICT MUNICIPALITY
showing where
SMALL GROWERS
can be accommodated on
COMMUNITY LAND
without trespassing on
ENVIRONMENTALLY
SENSITIVE AREAS**



SITE VISIT IS ESSENTIAL

to ensure

**NO HIDDEN *or* UNKNOWN
CONSTRAINTS**

not shown on

MAPS

20 12:15 PM



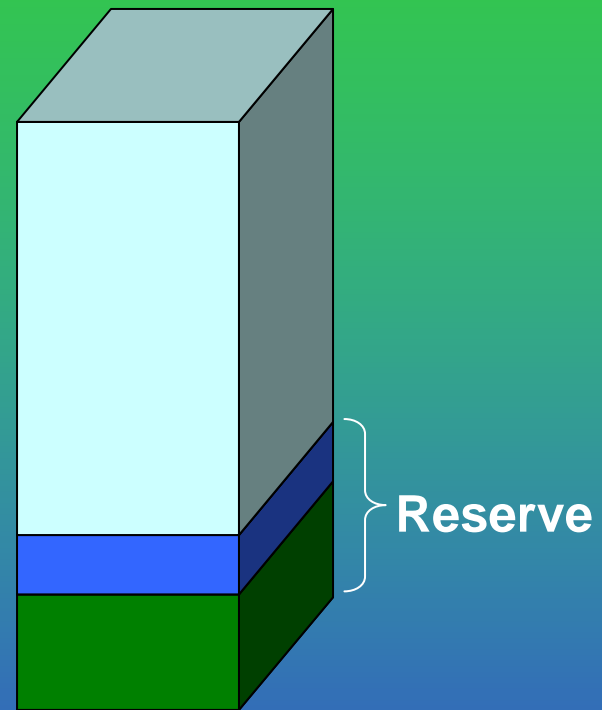
THE RESERVE IS ACCOMODATED

in the

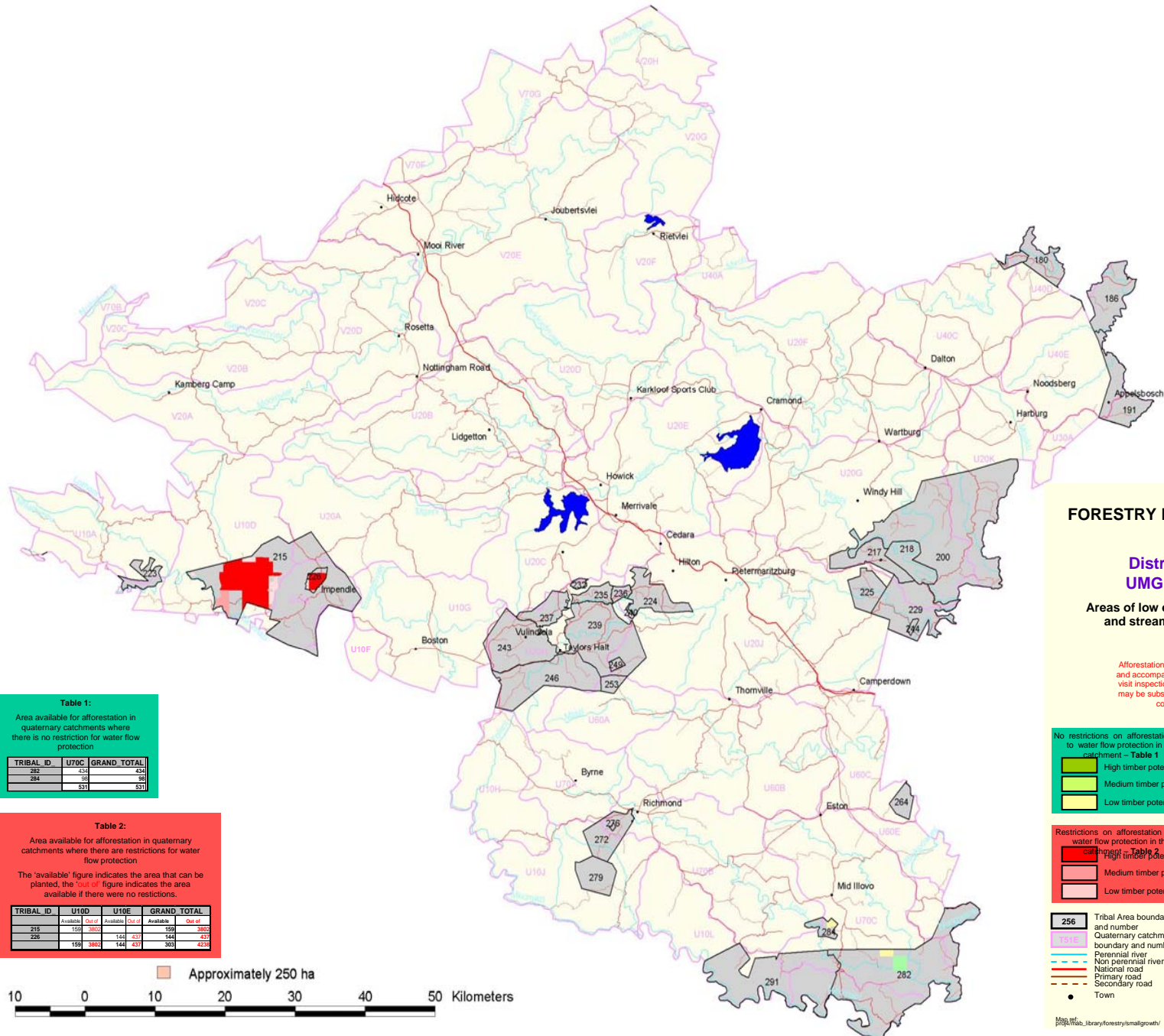
Capable
of utilisation

Basic human needs

Ecological



CALCULATIONS FOR STREAM FLOW REDUCTION



FORESTRY POTENTIAL IN TRIBAL AREAS

District Council 22-UMGUNGLOVU

Areas of low environmental, biodiversity and stream flow reduction impact.

Disclaimer:
Afforestation of areas indicating on this map and accompanying tables are subject to a site visit inspections by relevant authorities, and may be substantially reduced owing to local concerns or constraints.

Table 1:
Area available for afforestation in quaternary catchments where there is no restriction for water flow protection

TRIBAL ID	U70C	GRAND TOTAL
282	134	431
284	98	81
	531	531

Table 2:
Area available for afforestation in quaternary catchments where there are restrictions for water flow protection

The 'available' figure indicates the area that can be planted, the 'total' figure indicates the area available if there were no restrictions.

TRIBAL ID	U10D	U10E	GRAND TOTAL
	Available	Total	Available
215	155	302	147
226	158	302	144
	158	302	144

No restrictions on afforestation due to water flow protection in the catchment – Table 1

- High timber potential
- Medium timber potential
- Low timber potential

Restrictions on afforestation due to water flow protection in the catchment – Table 2

- High timber potential
- Medium timber potential
- Low timber potential



- 256 Tribal Area boundary and number
- Quaternary catchment boundary and number
- Perennial river
- Non-perennial river
- National road
- Primary road
- Secondary road
- Town

DEPARTMENT OF WATER AFFAIRS AND FORESTRY
 KWAZULU-NATAL
 TEL: (031) 226 2700



Table 1:

Area available for afforestation in quaternary catchments where there is no restriction for water flow protection

TRIBAL_ID	W12A	W21H	W21K	W22C	W22E	W22F	W22G	W22H	W22J	W22K	W42G	GRAND_TOTAL
12											135	135
23							16		1	144		161
27					263		678			193		1133
31			9		785	2040		419				3252
32							89			343		432
36							12					12
37										2		2
39							187		878	16		1081
41				185	43	1939						2166
44									417	152		569
51		57	262									319
56			25									25
66	1											1
68	1											1
	2	57	295	185	1090	3978	980	419	1296	850	135	9287

Table 2:

Area available for afforestation in quaternary catchments where there are restrictions for water flow protection.

The 'available' figure indicate the area that can be planted, the 'out of' figure indicate the area available if there were no restrictions.

TRIBAL_ID	V40A		V40C		W12A		W12B		W12C		W12D		W12E		W12F		W12G		GRAND_TOTAL	
	Available	Out of	Available	Out of	Available	Out of	Available	Out of	Available	Out of	Available	Out of	Available	Out of	Available	Out of	Available	Out of	Available	Out of
66			552	552															552	552
68			29	29	35	1095													64	1124
78			859	2391															859	2391
79					65	1290													65	1290
82			910	1080															910	1080
85	1530	1632																	1530	1632
87					65	170													65	170
88					60	1868													60	1868
89																	31	31	31	31
90			506	506															506	506
92									48	48	83	155							131	203
95	2	2	840	1540															842	1542
96					65	280													65	280
102					40	533	25	25											65	558
103	2130	2294																	2130	2294
110							130	461											130	461
111	44	44																	44	44
112	82	82																	82	82
113	8	8																	8	8
115											130	337							130	337
123													81	99	49	49			130	72
129							121	121											121	121
	3796	4061	3696	6098	330	5235	277	608	48	48	213	492	81	99	49	49	31	31	8520	16644

AREA AVAILABLE (ha) PER DISTRICT COUNCIL

<i>District Council</i>	<i>Open Catchments</i>	<i>Restricted Catchments</i>	<i>Total Area</i>
21 Ugu	7755		7755
22 Umgungundlovu	531	303 / 4238	834
23 Uthukela	8771		8771
24 Umzinyathi	11299		11299
25 Amajuba	0		0
26 Zululand	9288		9288
27 Umkhanyakude	955		955
28 Uthungulu	15939	8518 / 16643	24457
29 Illembe	4455	283 / 1115	4738
43 Sisonke	1923	8498 / 28673	10421
Ethekwini	71	50 / 398	121
Total	60987	17652 / 51067	78639

Open Catchments : 60 987ha

Restricted

Catchments : 17 652 / 51 067ha

Total : 78 639ha

Expected : 25 000 + 15 000ha

SAY : 40 000ha

**THE FACT THAT A PARTICULAR
AREA DOES NOT APPEAR ON A
MAP**

DOES NOT MEAN

**YOU WILL NOT BE ABLE TO PLANT
TREES.....**

A photograph of a dense green forest with utility lines in the foreground. The text is overlaid on the image.

**.....IT MEANS THAT YOU
WILL HAVE TO APPLY FOR**

A LICENCE
WHICH MEANS

**IT WILL HAVE TO GO THROUGH
THE FULL PROCESS**

BENEFITS:

- ▶ **Shorter processing time**
- ▶ **Poverty eradication**
- ▶ **Job Creation**

***.....even 5ha per person
could benefit 8000 people!***



BENEFITS:

.....at R1200 per hectare

***This could mean income
generation of***

R48 million pa !

FORESTRY POTENTIAL IN TRIBAL AREAS

District Council 43- SISONKE

Areas of low environmental, biodiversity and stream flow reduction impact.

Disclaimer:

Afforestation of areas indicated on this map and accompanying tables are subject to a site inspection by relevant authorities, and may be substantially reduced, owing to local concerns or constraints

No restrictions on afforestation due to water flow protection in the catchment – Table 1

High timber potential
Medium timber potential
Low timber potential

Restrictions on afforestation due to water flow protection in the catchment – Table 2

High timber potential
Medium timber potential
Low timber potential

256 Tribal Area boundary and number

U100 Customary catchment boundary and number

Perennial river

Natural river

National road

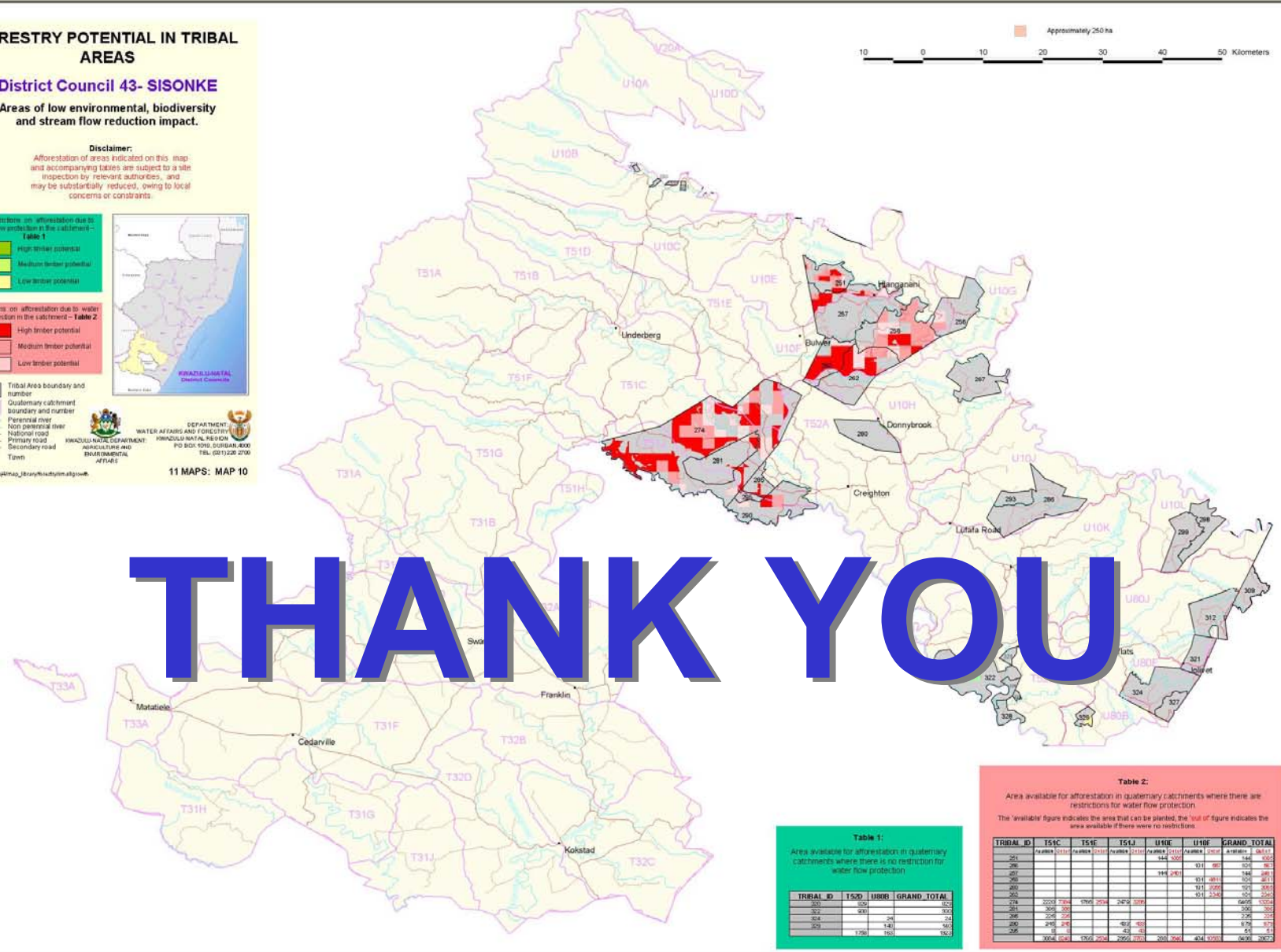
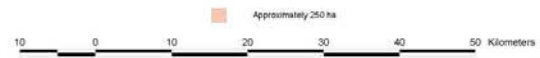
Primary road

Secondary road

● Town

Map ref: sptmap_library/kuqulungatso

11 MAPS: MAP 10



THANK YOU

Table 1:
Area available for afforestation in customary catchments where there is no restriction for water flow protection

Tribal ID	TSD	LUHR	GRAND TOTAL
201	850		850
202	931		931
203	24	141	165
204	1796	1701	3497

Table 2:
Area available for afforestation in customary catchments where there are restrictions for water flow protection. The 'available' figures indicate the area that can be planted, the 'total' figure indicates the area available if there were no restrictions.

Tribal ID	T51C	T51E	T51J	U10E	U10F	GRAND TOTAL
201	1111					1111
202				144	331	475
203				144	331	475
204	2222	734	1700	2142	2019	10017
205	300	300				600
206	2016	204				2220
207	8		40	10		58
208	3004	214	1700	2142	2019	10017