

# The Determination Of Water Resource Classes, Reserve And Resource Quality Objectives For Secondary Catchments (A5-A9) Within The Limpopo WMA And Secondary Catchment B9 in the Olifants WMA.

## Public Meeting

Presented by: Vuledzani Thenga  
Directorate: Reserve Determination

Date: 06 August 2025

WATER IS LIFE - SANITATION IS DIGNITY



**water & sanitation**

Department:  
Water and Sanitation  
**REPUBLIC OF SOUTH AFRICA**



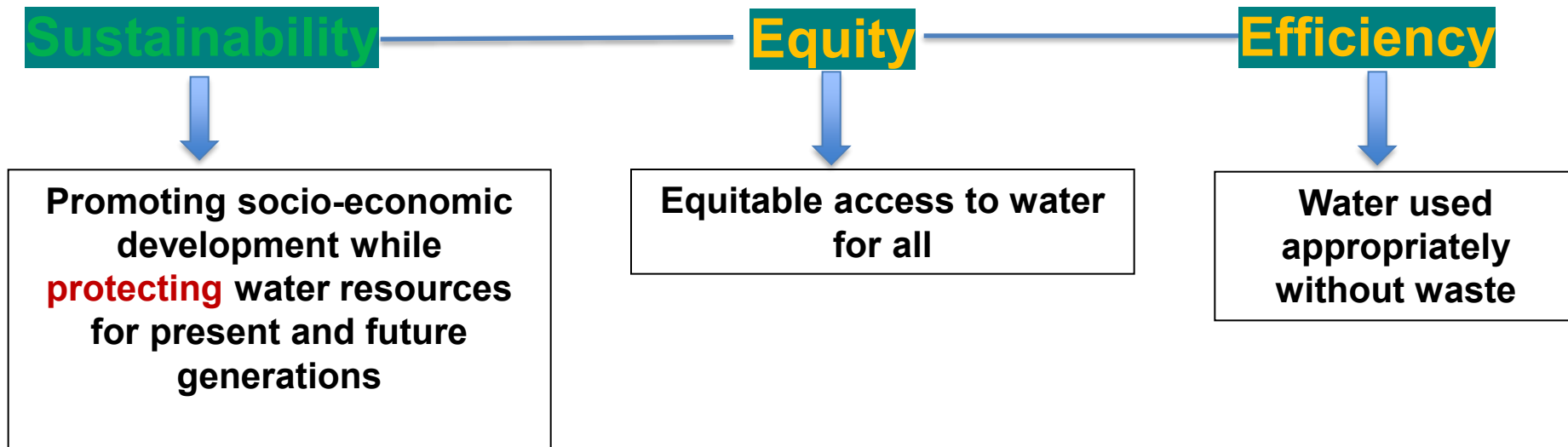
# OUTLINE

1. Introduction
2. Background on water resources protection
3. Resource Directed Measures (RDM) process
4. Study Objectives
5. Study approach
6. Study progress & stakeholder engagement

# 1. INTRODUCTION

## The National Water Act 36 of 1998 (NWA)

**Purpose:** ensure nation's water resources are **Protected**, Used, Controlled, Managed, Conserved, and Developed, within guiding Principles:



## 2. BACKGROUND ON WATER RESOURCE PROTECTION

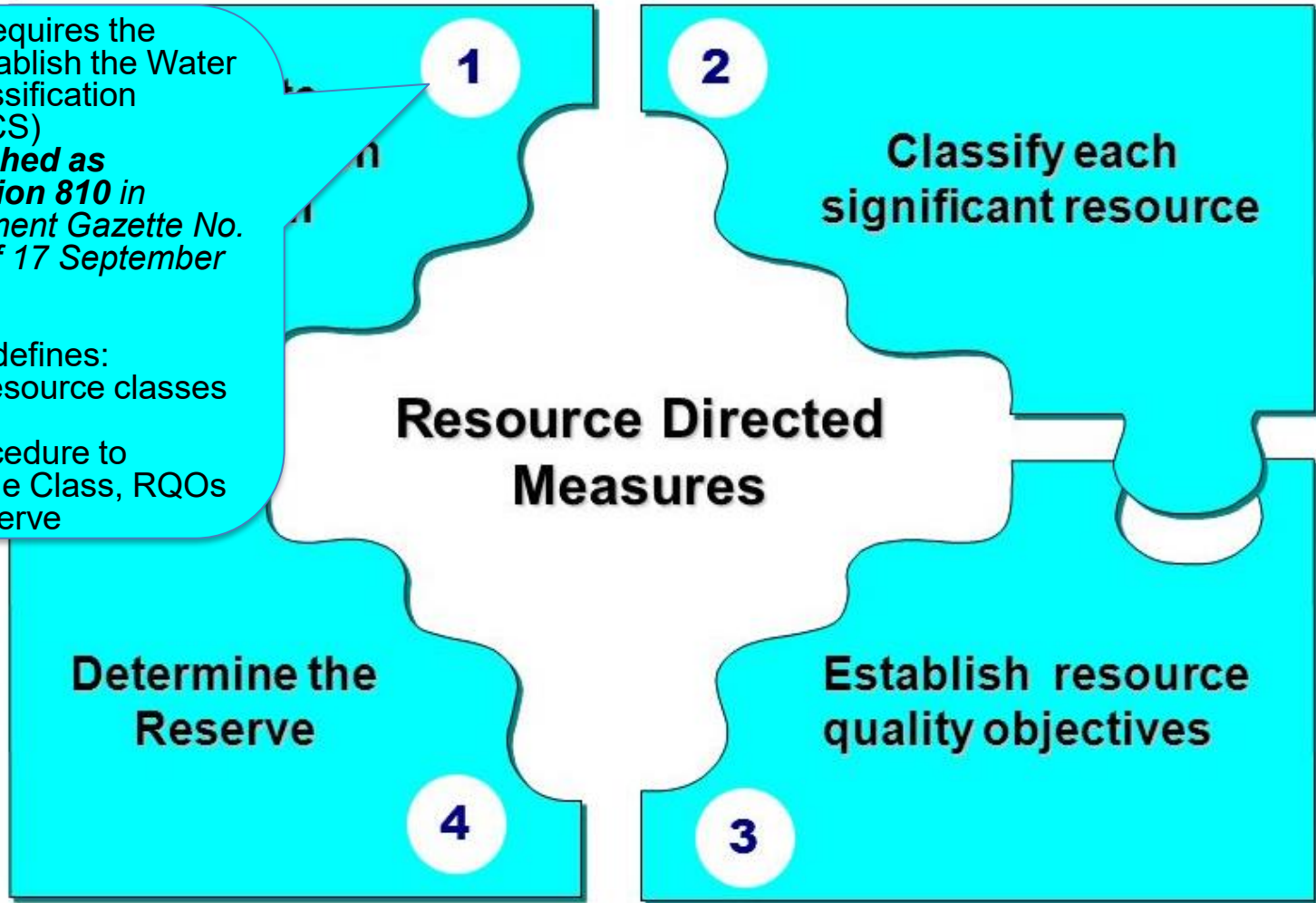
- Water is fundamental to socio-economic development and environmental sustainability



- Chapter 3 of the NWA provides tools for the protection of water resources through the implementation of:
  - ☐ Resource Directed Measures (RDM)
    - Classification of Water Resources (S13)
    - Determination of Resource Quality Objectives (RQOs) (S13)
    - Determination of the Reserve (S16 & S17)

### 3. RESOURCE DIRECTED MEASURES PROCESS

- **S12, NWA** requires the Minister to establish the Water Resource Classification System, (WRCS)
  - **Published as Regulation 810** in Government Gazette No. 33541 of 17 September 2010
- The WRCS defines:
  - water resource classes and
  - the procedure to determine Class, RQOs and Reserve



## 3.1. WATER RESOURCE CLASSIFICATION

Classification defines the **desired state** of the water resources by setting Water Resource Classes;

**Each class represents:**

- a different **level of protection** that is required for the water resource, and
- **the extent to which the water resource can be used.**

**Classification describes:**

- The **present status** of the water resource,
- The state towards which the water resource needs **to be managed** sustainably (**future state**).

Surface water,  
groundwater, wetlands,  
estuaries

2

Classify each  
significant resource

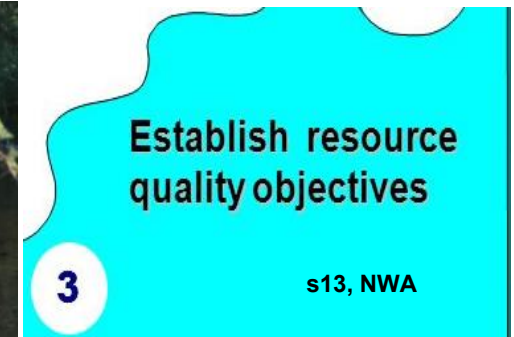
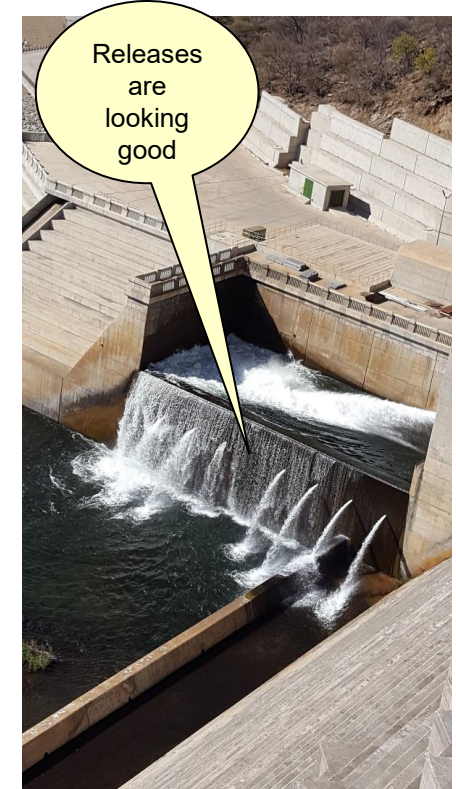
s13, NWA

Classes	Description of use	Majority of ecological categories
Class I	Minimally used	A-B
Class II	Moderately used	C
Class III	Heavily used	D

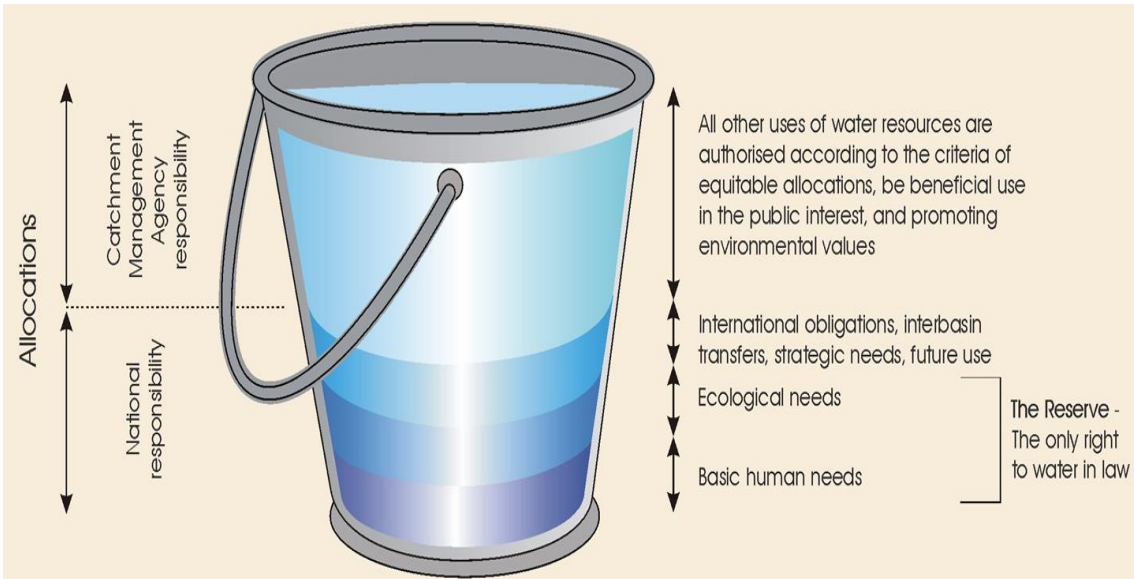


## 3.2. RESOURCE QUALITY OBJECTIVES

- **Purpose:** to establish clear goals relating to the quantity, quality, habitat, biota of the relevant water resources.
  - ✓ Provide measurable management goals that give direction to resource managers as to how the resource needs to be managed.
- RQOs could be narrative and/or numerical



### 3.3. THE RESERVE



Source: Manyaka Greyling Meiring

- **Reserve** means the quantity and quality of water required:
- (a) to satisfy **basic human needs** by securing a basic water supply, for people who are now or who will, in the reasonably near future, be
  - (i) relying upon;
  - (ii) taking water from; or
  - (iii) being supplied from, the relevant water resource; and
- (b) to **protect aquatic ecosystems** in order to secure ecologically sustainable development and use of the relevant water resource.

**Determine the Reserve**

**4**

s16 & 17, NWA

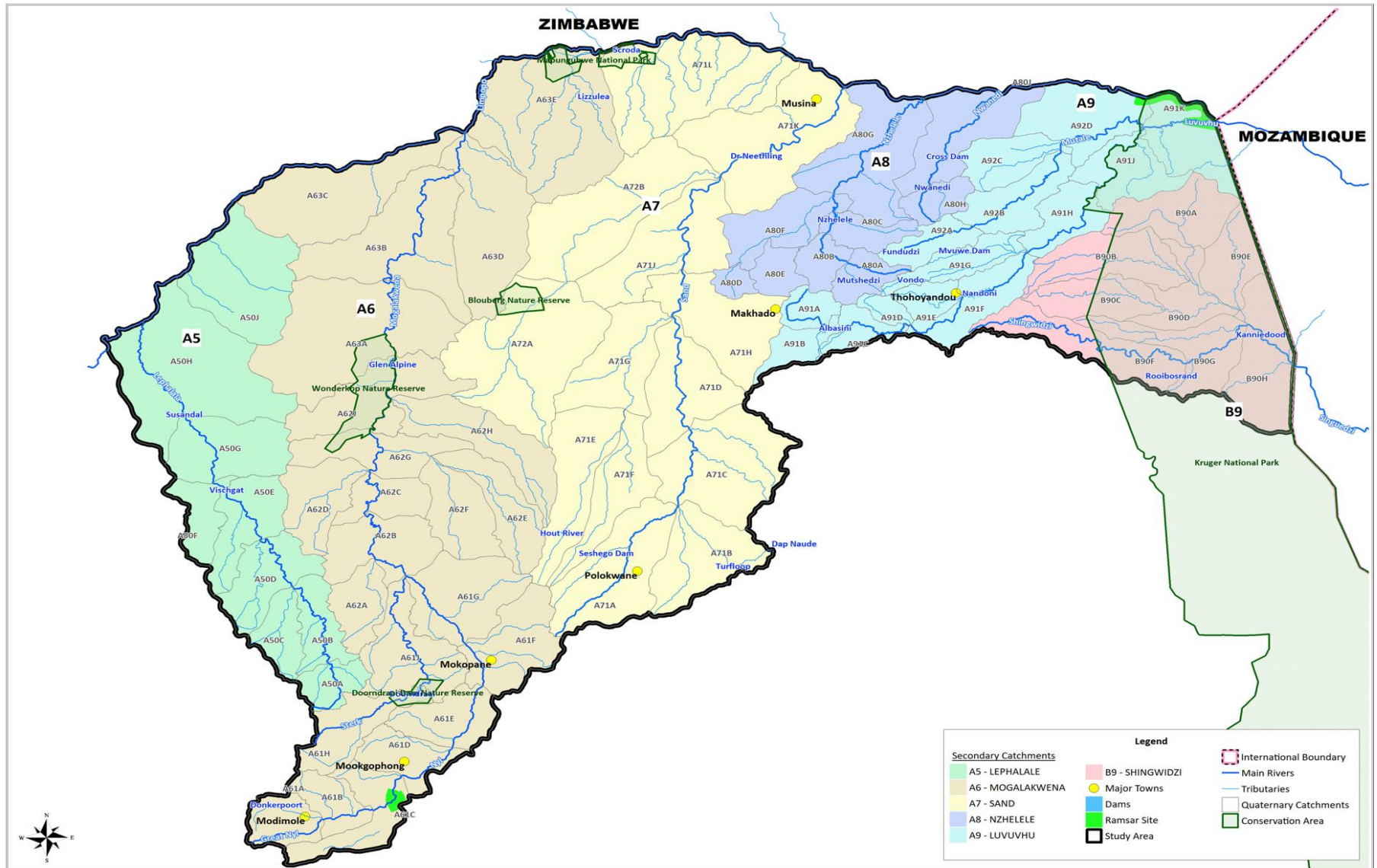




## 4. STUDY OBJECTIVES

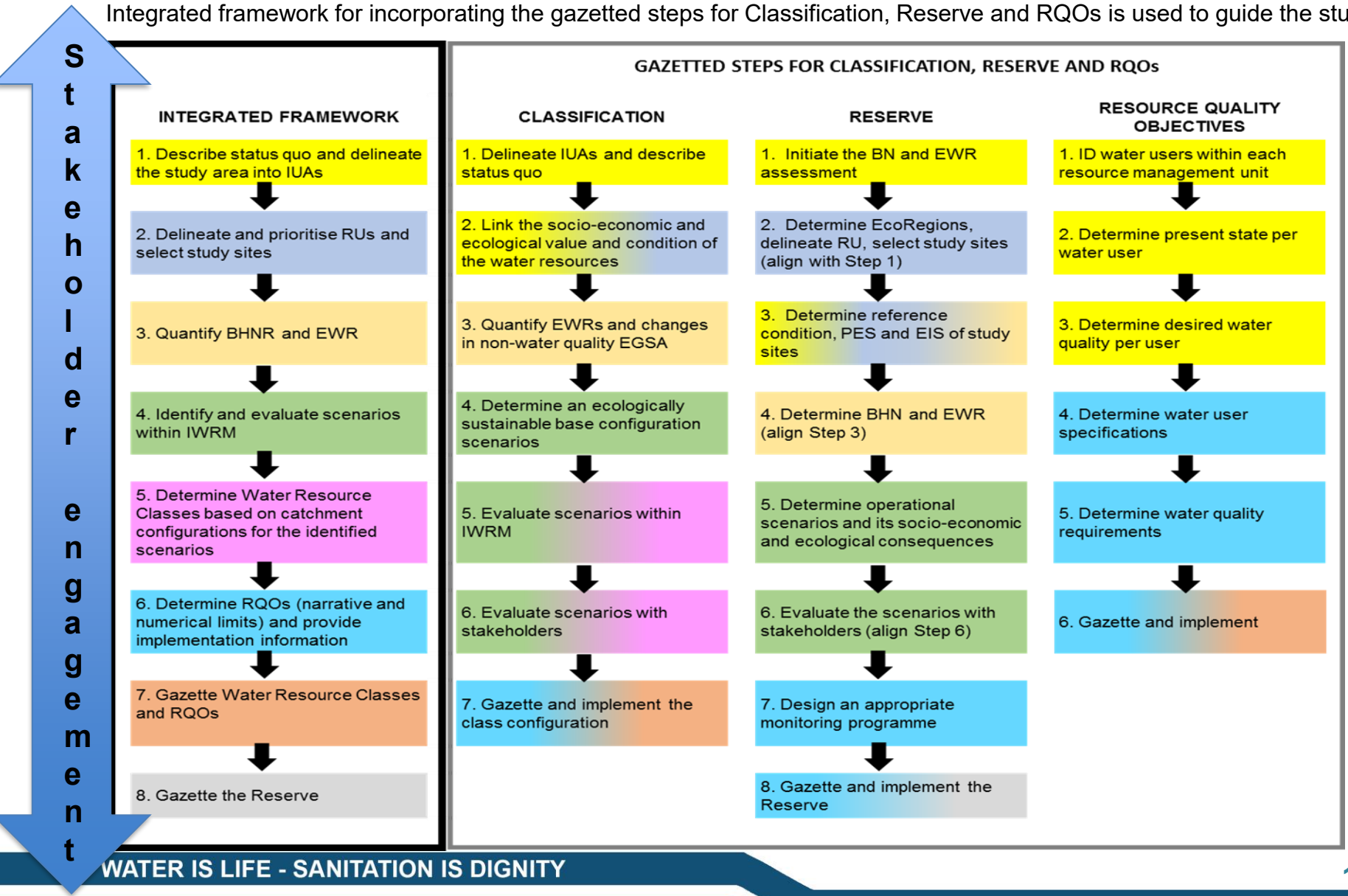
- The C.D: Water Ecosystem initiated 52 Months project study
  - from September 2021 to January 2026
- “Determination of Water Resource Classes, Reserve and Resource Quality Objectives for Secondary Catchments **A5 – A9** within the Limpopo Water Management Area (WMA 1) and Secondary Catchment **B9** in the Olifants Water Management Area (WMA 2)”
  - Myra Consulting was appointed as the PSP
- The main objectives of the project is to determine and gazette:
  - Water Resource Classes;
  - Reserve
  - Resource Quality Objectives

# 4.1 OVERVIEW OF THE STUDY AREA



# 5. STUDY APPROACH: INTEGRATED PROCEDURE

Integrated framework for incorporating the gazetted steps for Classification, Reserve and RQOs is used to guide the study





# 6. OVERVIEW OF THE STUDY PROGRESS

1. Delineate and prioritise RUs and select study sites

Public meeting: 12 May 2022

2. Describe status quo and delineate the study area into IUAs

PSC 1: 5 July 2022

3. Quantify BHN and EWR

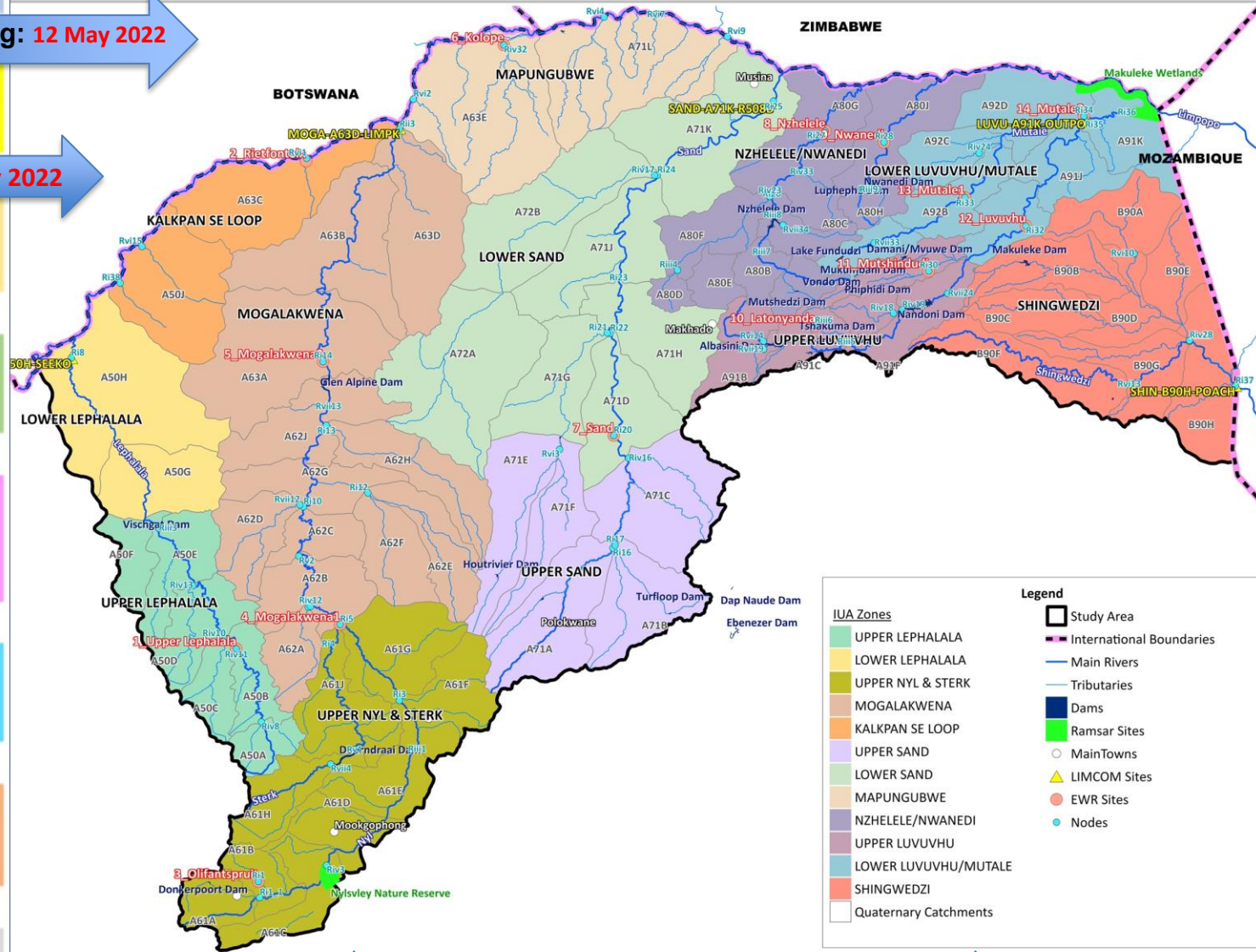
4. Identify and evaluate scenarios within IWRM

5. Determine Water Resource Classes based on catchment configurations for the identified scenarios

6. Determine RQOs (narrative and numerical limits) and provide implementation information

7. Gazette Water Resource Classes and RQOs

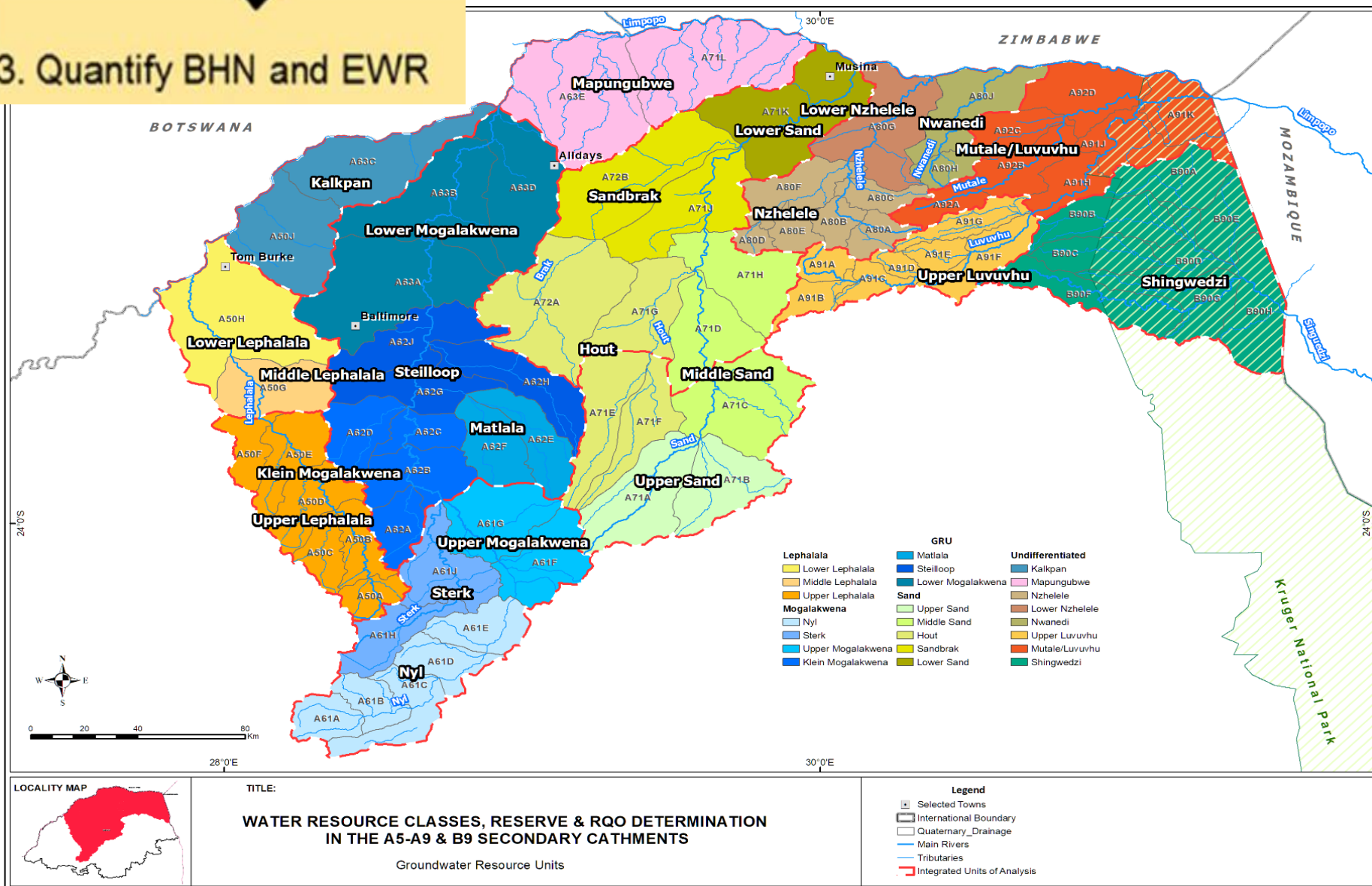
8. Gazette the Reserve



Stakeholder engagement

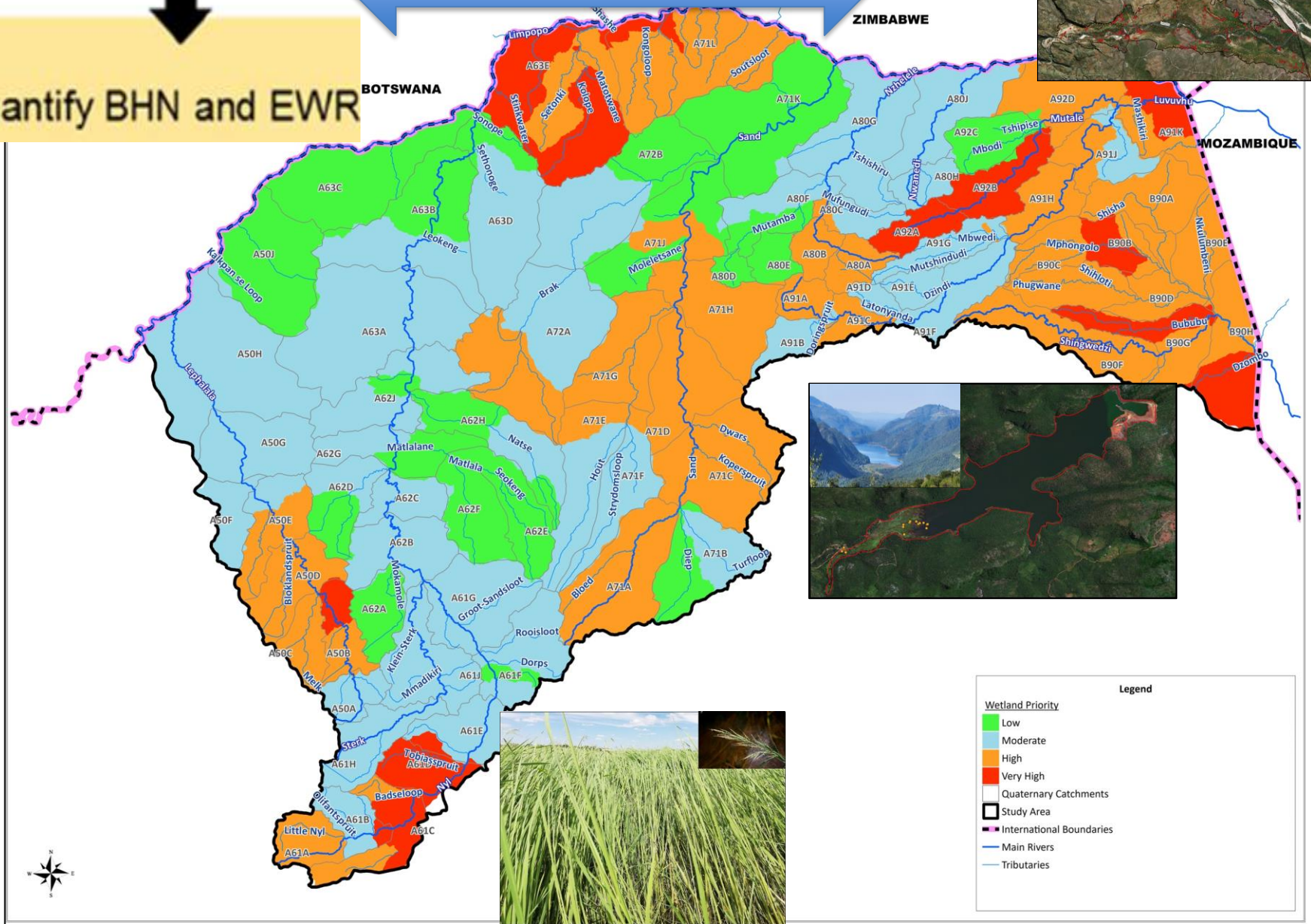


### 3. Quantify BHN and EWR



Wetlands Prio TTG: 21 Nov 2022

### 3. Quantify BHN and EWR





3. Quantify BHN and EWR

PSC 2: 14 March 2024

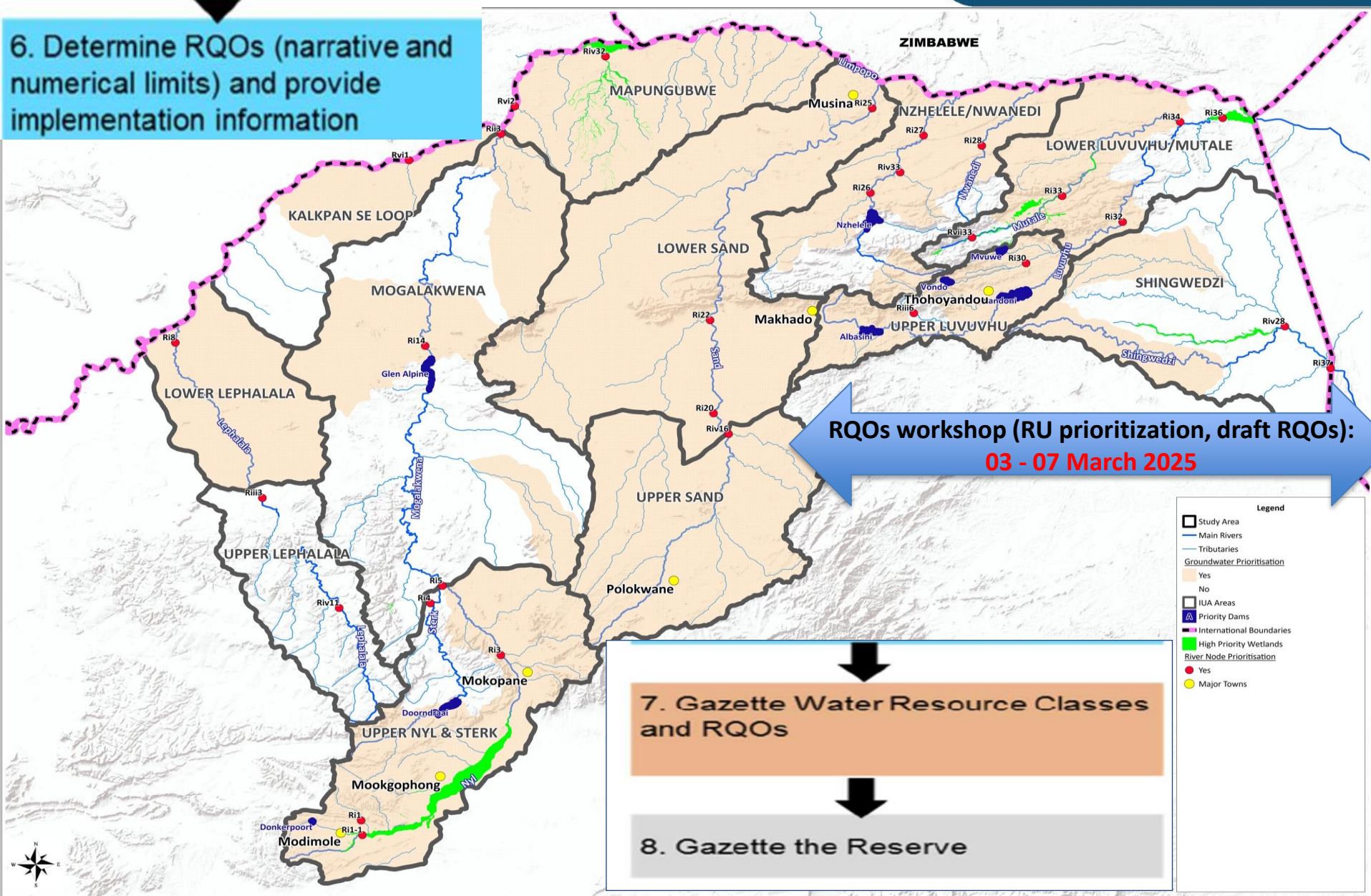








6. Determine RQOs (narrative and numerical limits) and provide implementation information



## 7. CONTACT DETAILS

<b><u>Ms</u> Adhishri Singh</b>	<b>Stakeholder engagement consultant</b>	<b>012 336 9800</b>	<b>adhishri@myraconsulting.co.za</b>
<b>Ms Esther Lekalake</b>	<b>DWS: Project Manager</b>	<b>012 336 8671</b>	<b><u>Lekalakee@dws.gov.za</u></b>
<b>Ms Vuledzani Thenga</b>	<b>DWS: Project Manager</b>	<b>012 336 6735</b>	<b>ThengaV@dws.gov.za</b>
<b>Ms Precious Rambasa</b>	<b>DWS: Project Manager</b>	<b>012 336 6659</b>	<b>rambasap@dws.gov.za</b>

<https://www.dws.gov.za/RDM/WRCS/lvhv.aspx>





**THANK YOU**

**WATER IS LIFE - SANITATION IS DIGNITY**