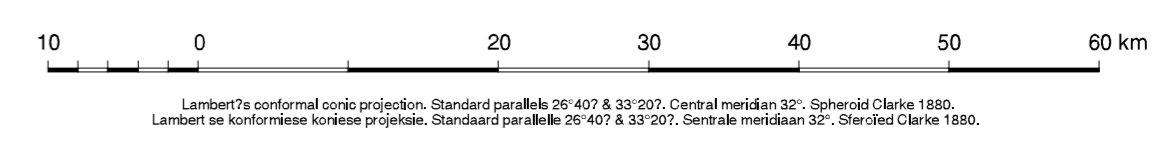




First Edition 1998
Eerste Uitgawe



G. King - Map Author / Kaartskrywer
E. Maritz - GIS Specialist / GIS Spesialis
F. Jonck / E. Maritz - Cartographer / Kartograaf

This map was approved by the Director-General of the Department of Water Affairs and Forestry. Die grondwater voorkoms en grondwater kwaliteit reeks, en die skematiese dwarsniede van grondwater voorkoms is deur G. King saamgestel. Die hidrologie is deur G. King vanaf die 1:500 000 skaal skematiese kaartreks van die Republiek van Suid-Afrika. Die hidrologie is deur G. King saamgestel. Die hidrologie is deur G. King saamgestel. Die hidrologie is deur G. King saamgestel.

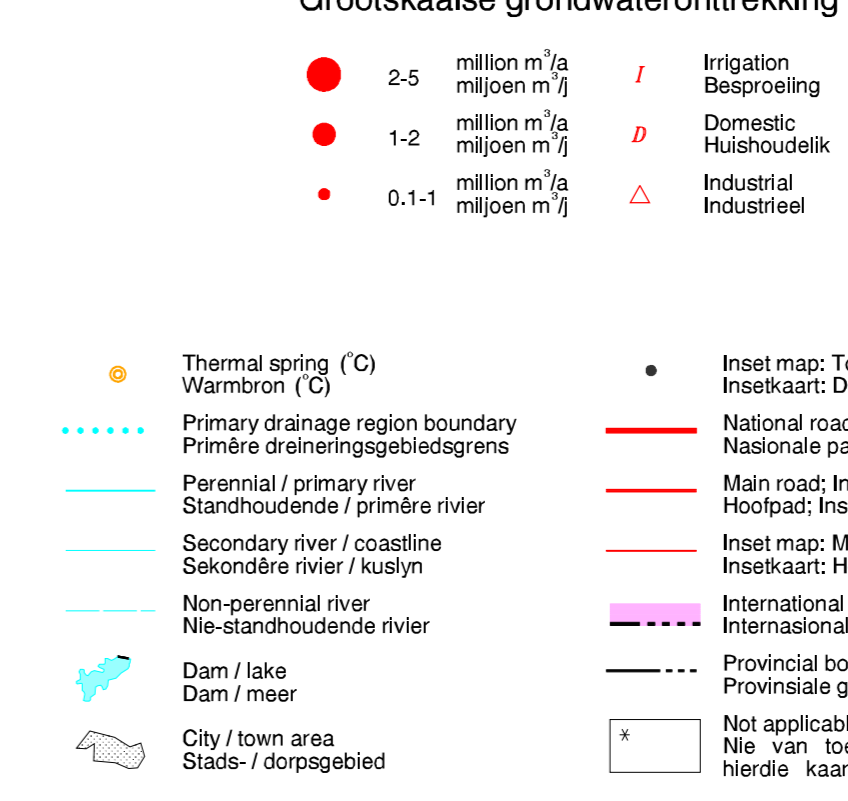
Principal groundwater occurrence / Hoof grondwater voorkoms

Table with 4 columns (Borehole yield class) and 4 rows (Aquifer type). Legend for borehole yield class: 0.0-0.1, 0.1-0.5, 0.5-2.0, 2.0-5.0.

Note: Groundwater occurrence depicts the aquifer type with the highest borehole yield which does not always correlate with surface lithology.

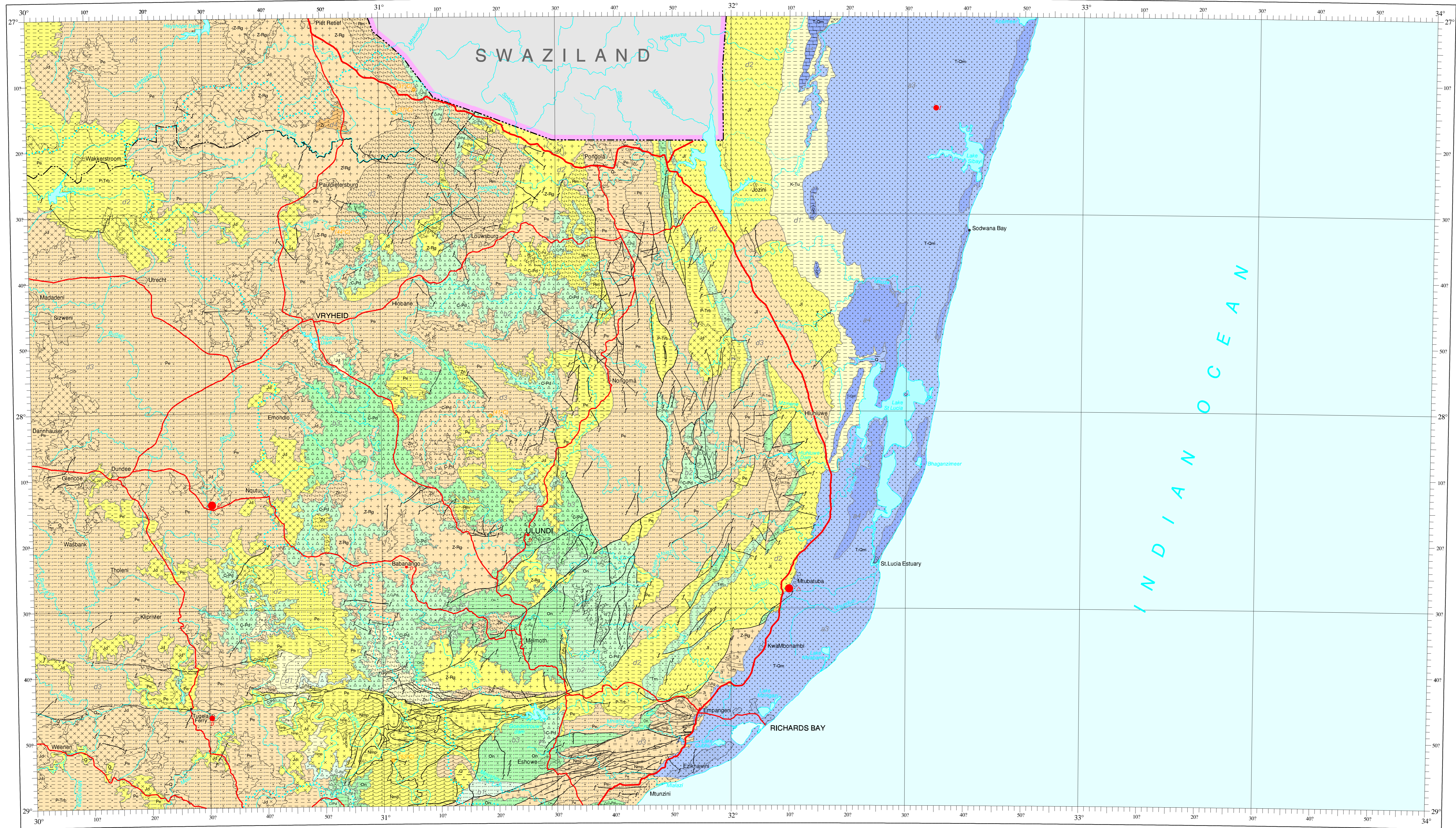
Surface lithology / Oppervlakkologie. Legend for various geological units including Alluvium, Unconsolidated coastal deposits, and various igneous and metamorphic rocks.

Large scale groundwater abstraction

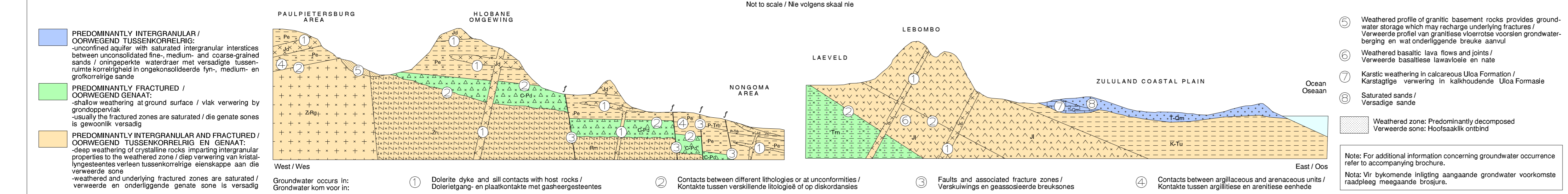


Chronostratigraphy

Chronostratigraphic column showing geological periods from Quaternary to Precambrian.



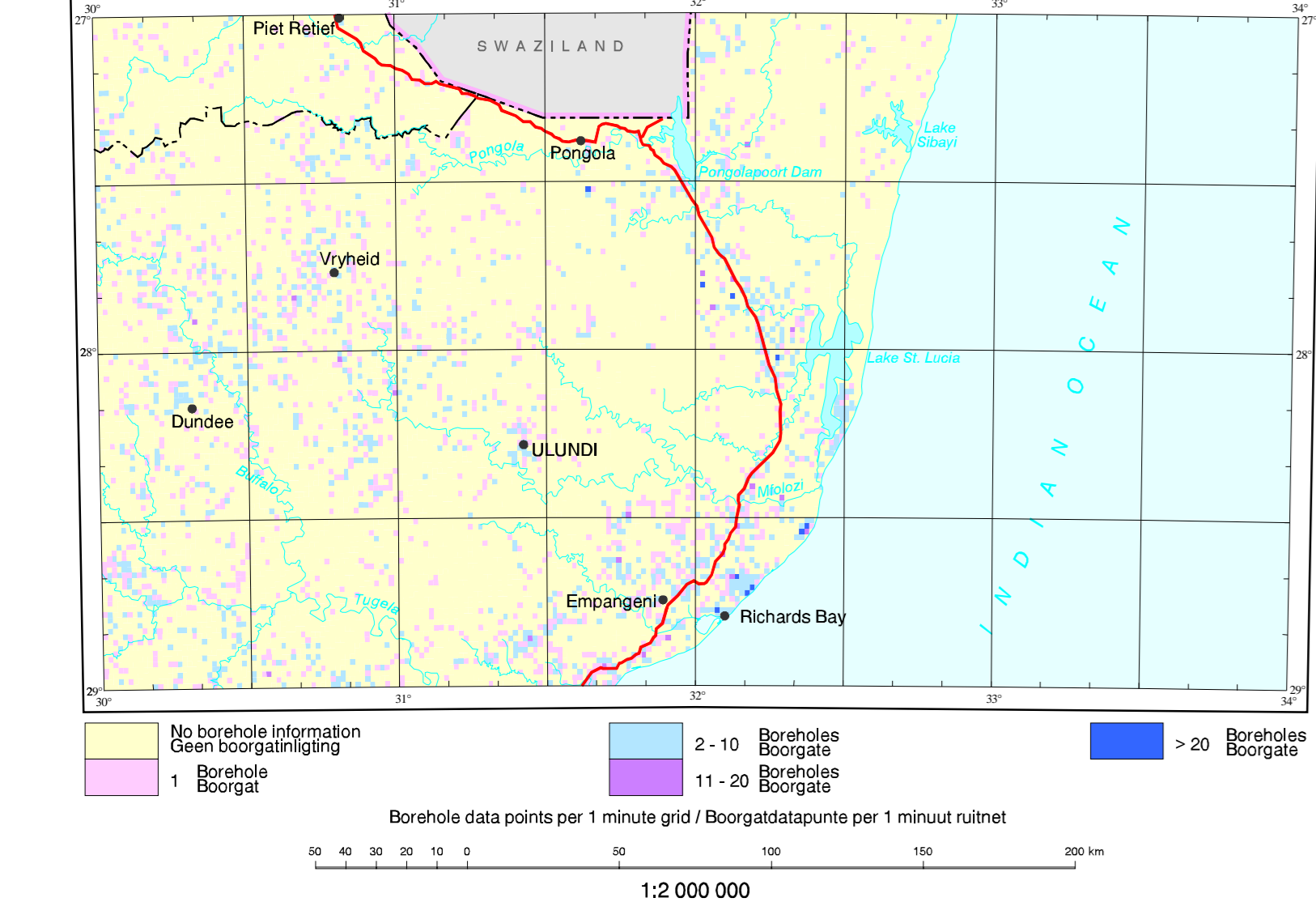
Schematic cross-sections to illustrate typical groundwater occurrence / Skematiese dwarsniede om tipiese grondwater voorkoms te illustreer



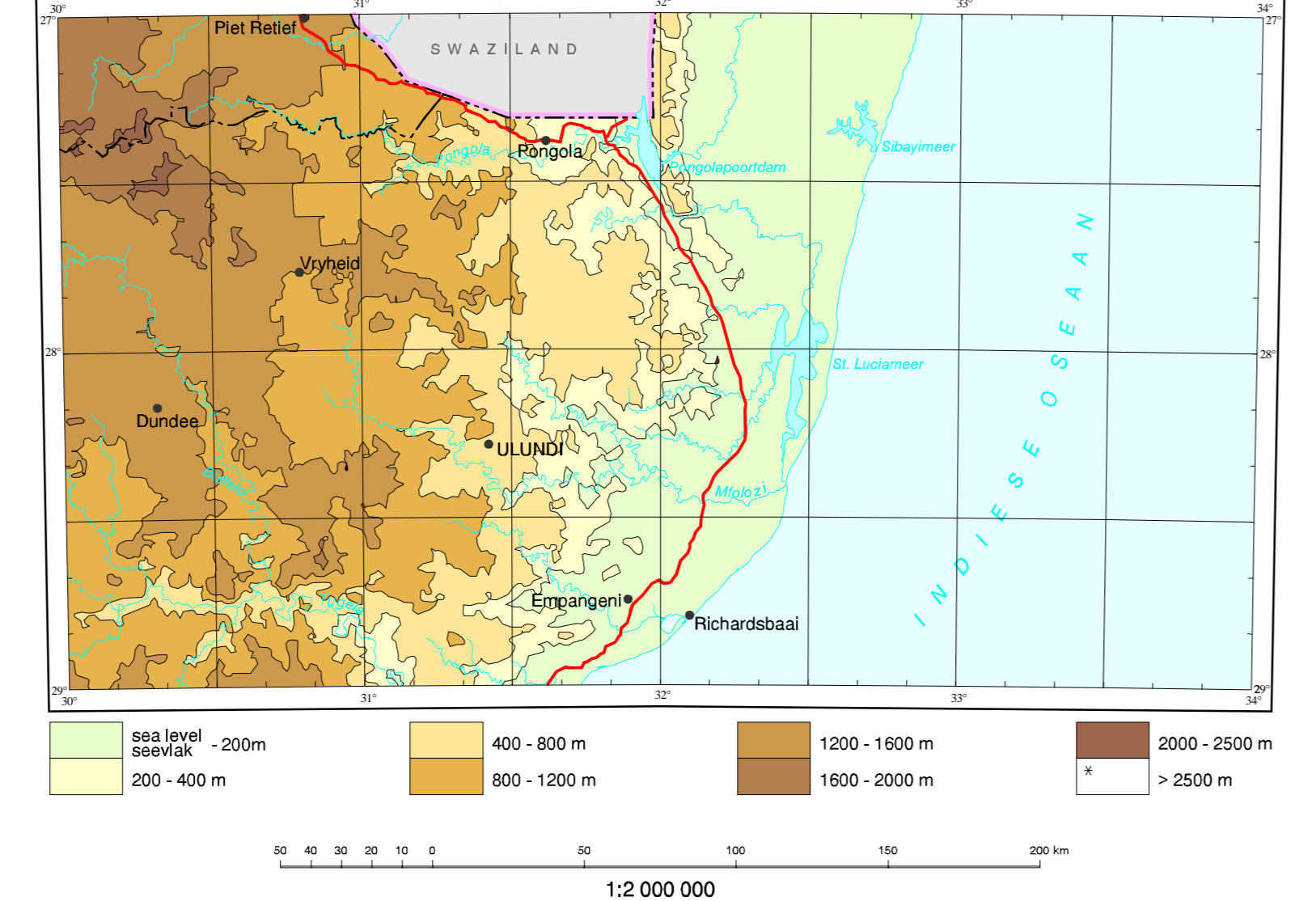
This general hydrogeological map is part of the 1:500 000 Hydrogeological map series of the Republic of South Africa. This map is not to be used for the purpose of local borehole siting. Simplified lithology may be considered as guide only. Further geological information can be obtained from the Council for Geoscience.

Hierdie algemene hidrogeologiese kaart is deel van die 1:500 000 Hidrogeologiese kaartreks van die Republiek van Suid-Afrika. Hierdie kaart moet nie gebruik word vir plaaslike boorgatplaasings nie. Vereenvoudigde litologie kan slegs as riglyne dien. Verdere geologiese inligting kan verkry word van die Raad vir Geologiese Wetenskap.

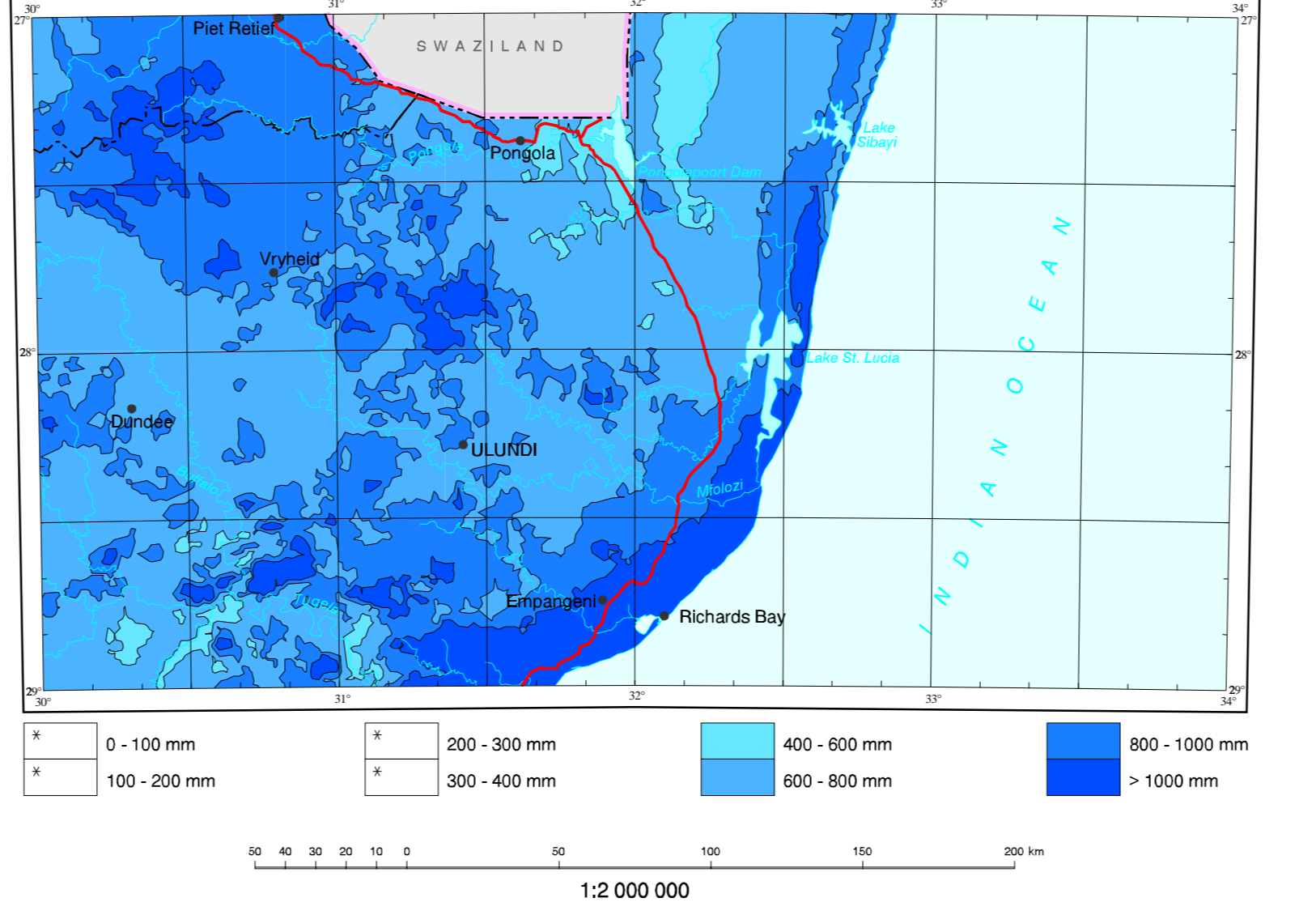
Distribution of borehole data / Verspreiding van boorgatdata



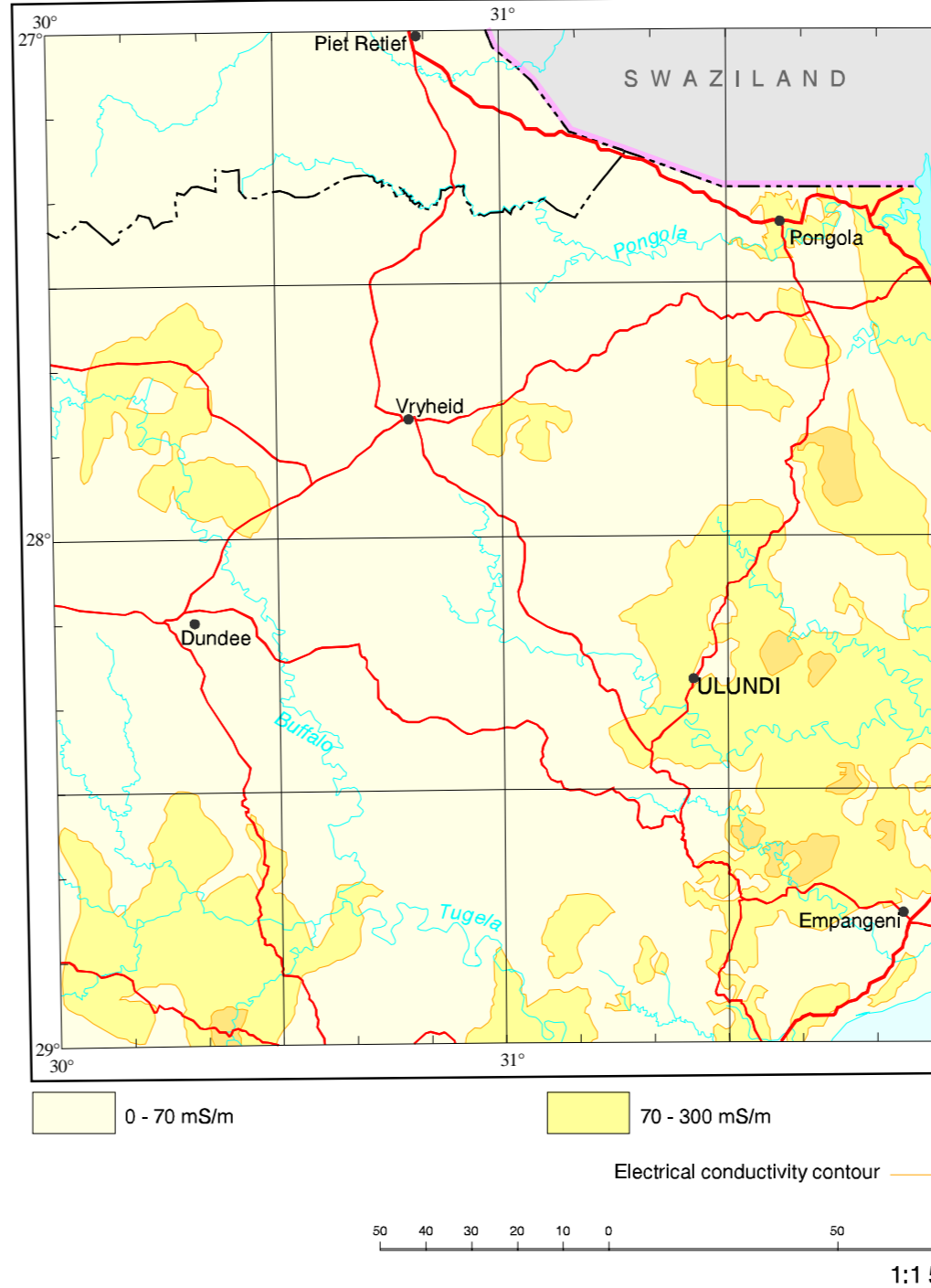
Elevation above sea level / Hoogte bo seevlak



Mean annual precipitation / Gemiddelde jaarlikse neerslag



Groundwater Quality / Grondwaterkwaliteit



Provincial boundaries / Provinsiale grense Feb 1996

