

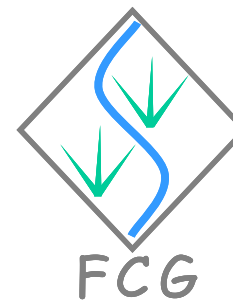
# **INVENTORY OF NATIONAL RIVER HEALTH PROGRAMME MONITORING SITES**

## **VOLUME 2 – MAPS OF NATIONAL RHP MONITORING SITES - PER WATER MANAGEMENT AREA**

**November 2005**

**H.F. Dallas**

**The Freshwater Consulting Group / Freshwater Research Unit  
University of Cape Town**



**Prepared for:**

**Environmentek (CSIR) and Resource Quality Services,  
Department of Water Affairs and Forestry**



Table of Contents

1. Introduction .....1

List of Maps

Map M1 WMA 01 Limpopo .....2

Map M2 WMA 02 Luvuvhu and Letaba.....3

Map M3 WMA 03 Crocodile (West) and Marico.....4

Map M4 WMA 04 Olifants .....5

Map M5 WMA 05 Inkomati.....6

Map M6 WMA 06 Usutu to Mhlatuze .....7

Map M7 WMA 07 Thukela .....8

Map M8 WMA 08 Upper Vaal .....9

Map M9 WMA 09 Middle Vaal.....10

Map M10 WMA 10 Lower Vaal .....11

Map M11 WMA 11 Mvoti to Umzimkulu.....12

Map M12 WMA 12 Mzimvubu to Keiskamma .....13

Map M13 WMA 13 Upper Orange.....14

Map M14 WMA 14 Lower Orange .....15

Map M15 WMA 15 Fish to Tsitsikamma .....16

Map M16 WMA 16 Gouritz.....17

Map M17 WMA 17 Olifants / Doring.....18

Map M18 WMA 18 Breede.....19

Map M19 WMA 19 Berg.....20

## 1. INTRODUCTION

This report comprises 2 volumes, namely:

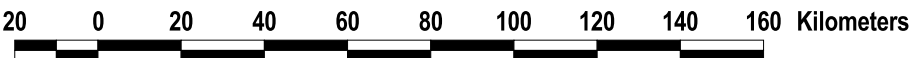
- Volume 1: Introduction, selection of RHP site, results presented as tables for each Water Management Area (WMA), conclusions and references (A4 format), and
- Volume 2: Maps of national RHP sites per Water Management Area (A3 format).

Data from the regional workshops was consolidated into the standardised spreadsheets and maps showing sites were generated per Water Management Area. The report summarizes the process followed in the selection of national River Health Programme (RHP) sites.

In this volume maps have been produced per WMA. Sites are presented within the framework of ecoregions (levels I and II). Rivers, dams, towns and major roads are indicated on each map.

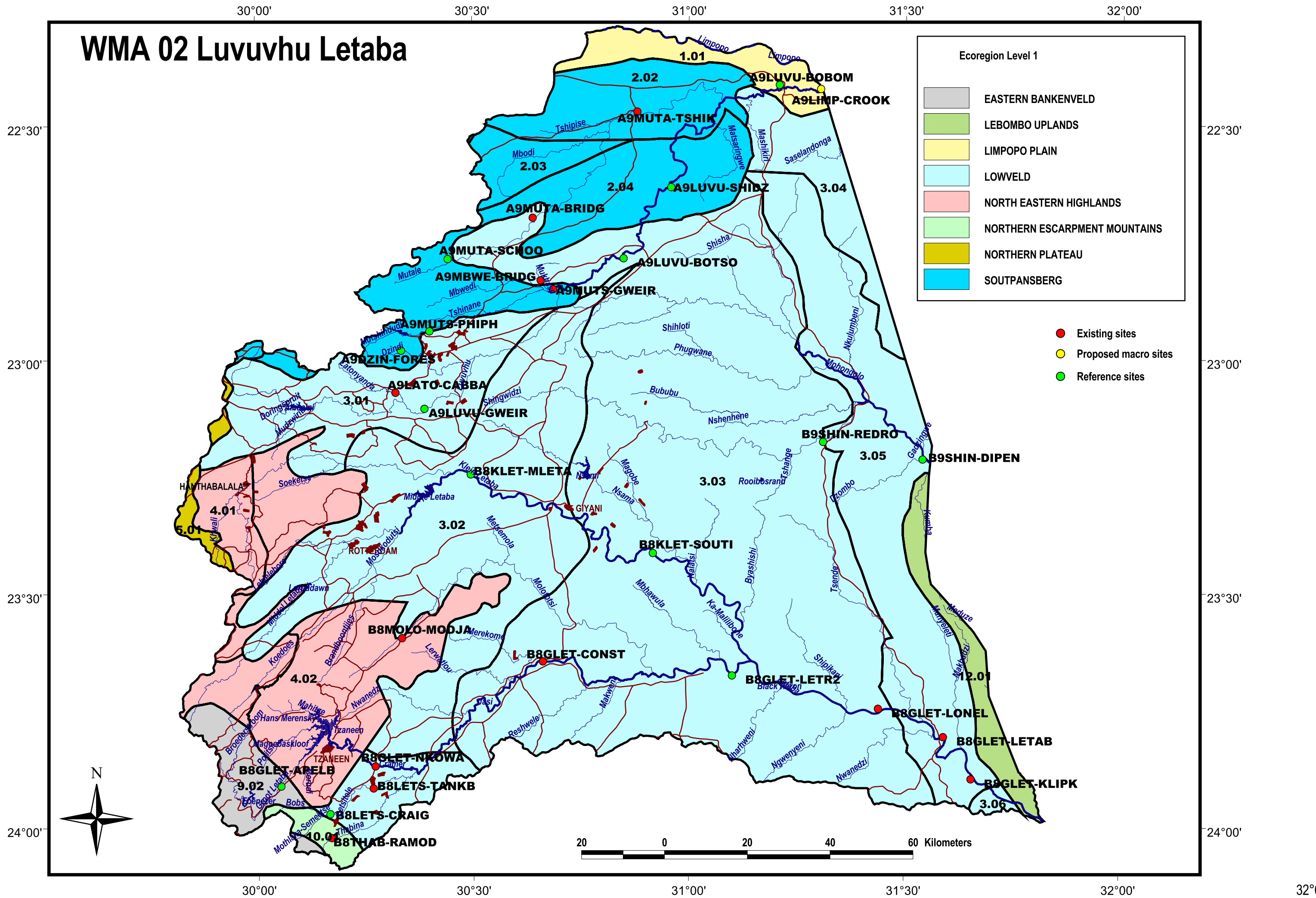
Three types of sites, identified at the workshops, are indicated on the maps as follows:

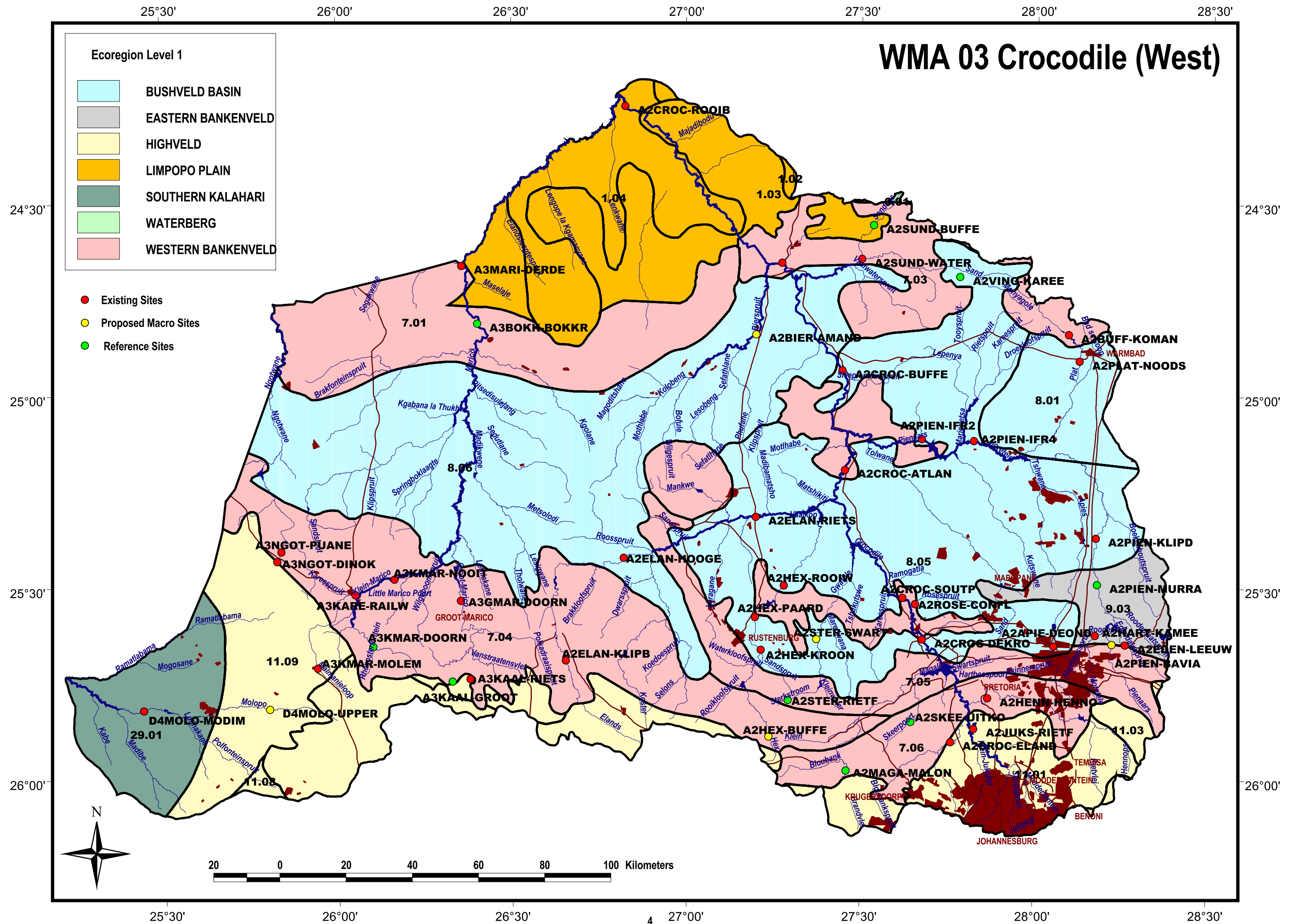
- **Existing sites** (mostly monitoring) – these sites existed prior to the workshops, mostly as provincial or local monitoring sites. Supporting attribute data for many of these sites have been provided by regional experts, although in some instances data are missing.
- **Proposed macro sites** - macro site locations were identified at the river reach scale when no sites existed. Supporting attribute data for these sites was generally not available and specific site locations for these sites will be determined during ground-truthing and site validation.
- **Reference sites** – these are existing sites that represent the “least impacted” condition and which may be used to generate future reference conditions for specific ecoregions, longitudinal zones and/or river types. The process by which reference conditions are derived will vary with biotic component, i.e. invertebrates, fish, riparian vegetation. It is likely that additional reference sites will need to be identified within ecoregions which are not represented or under represented.





# WMA 02 Luvuvhu Letaba

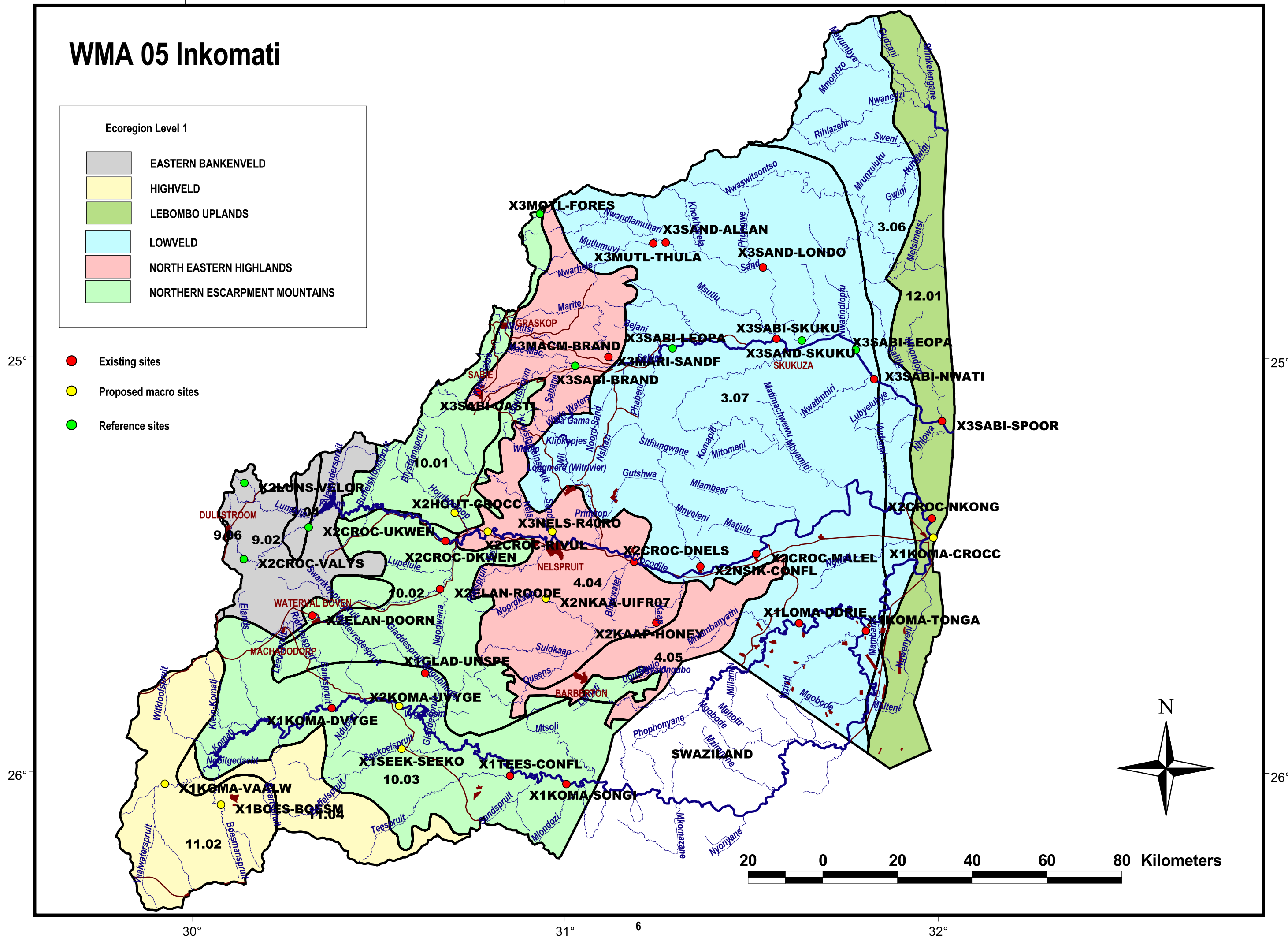
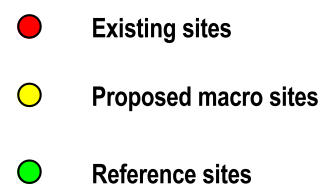
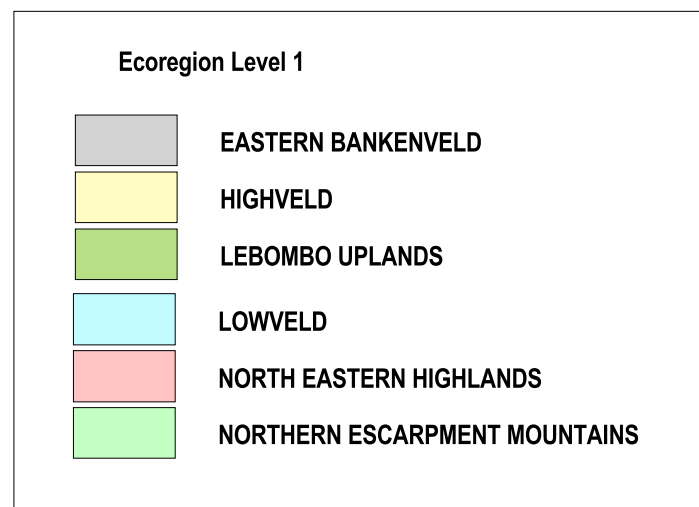






[illegible]

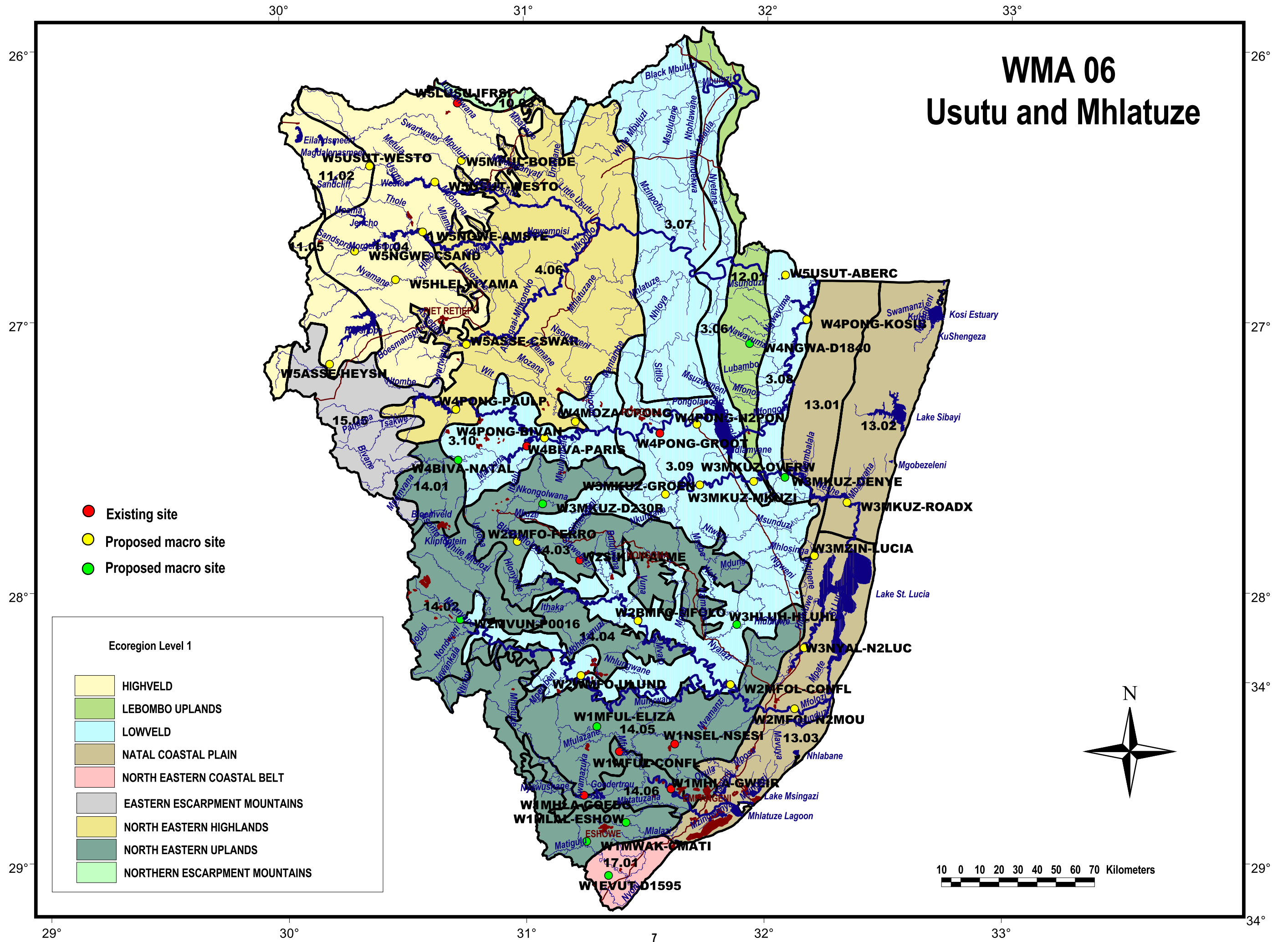
## WMA 05 Inkomati



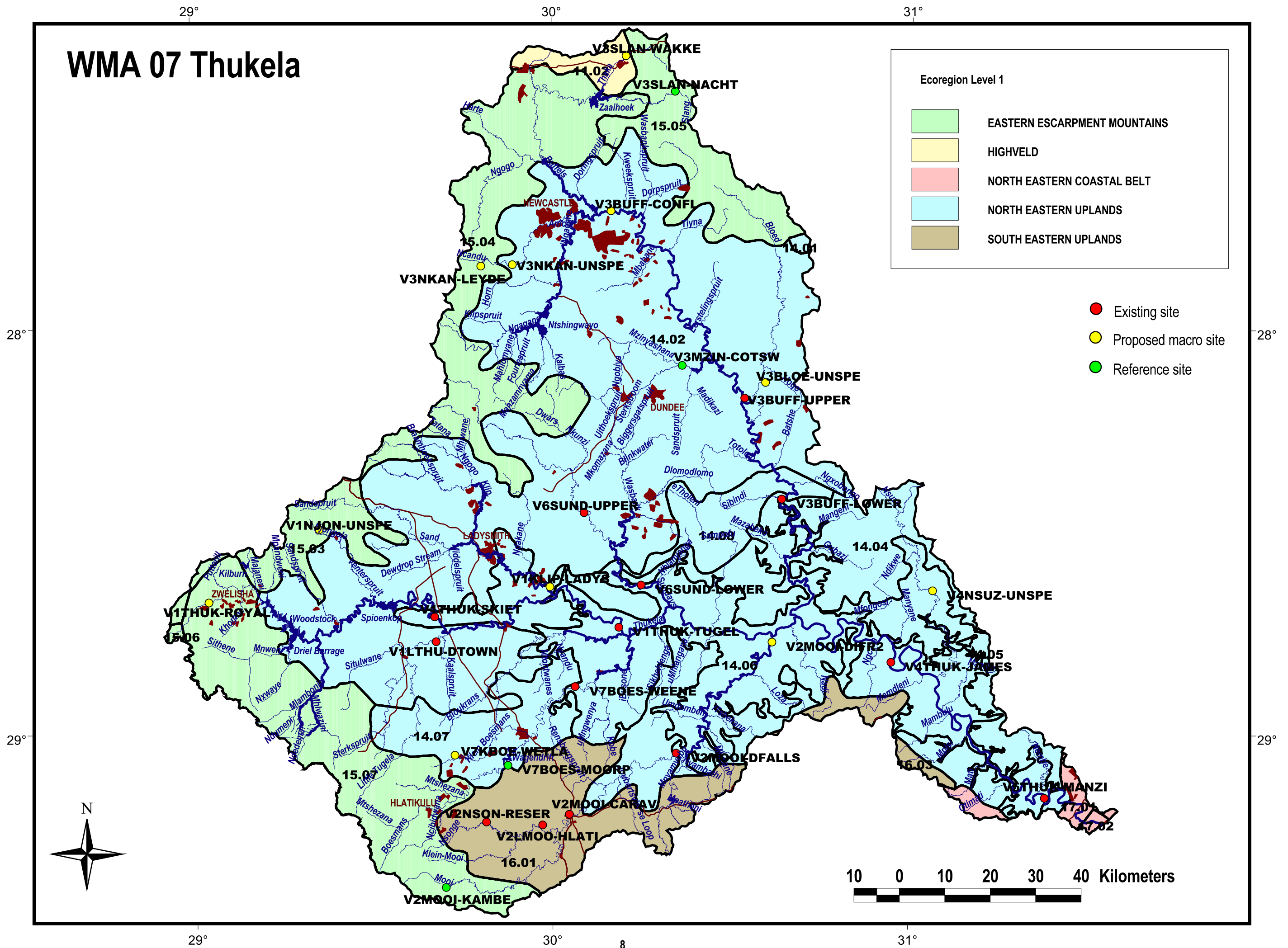


# WMA 06

## Usutu and Mhlatuze

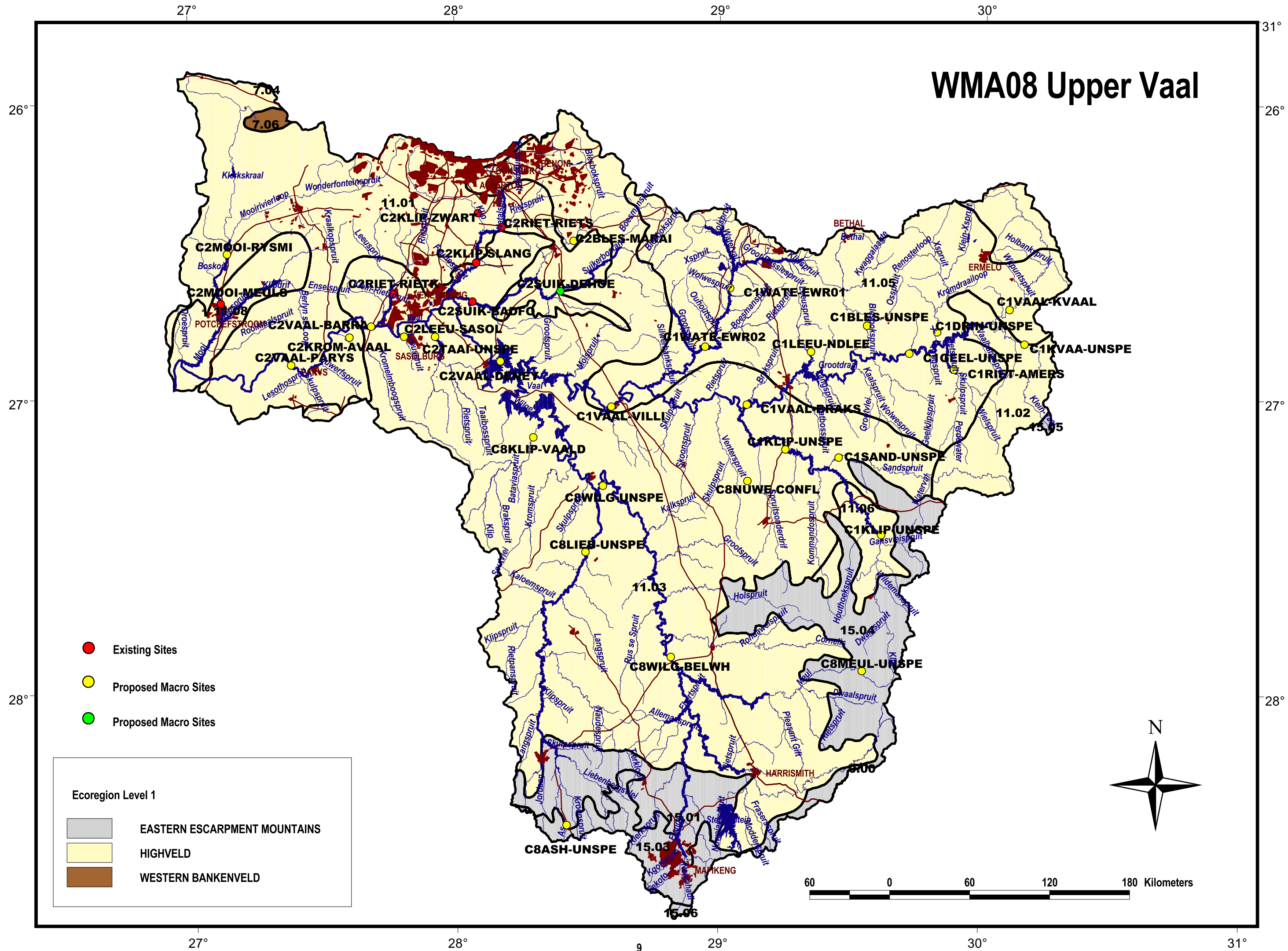


# WMA 07 Thukela





## WMA08 Upper Vaal



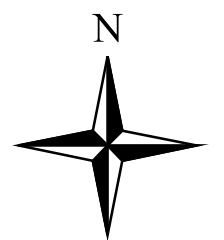
# WMA09 Middle Vaal

- Existing Sites
- Proposed Macro Sites

## Ecoregion Level 1

- EASTERN ESCARPMENT MOUNTAINS
- HIGHVELD
- SOUTHERN KALAHARI

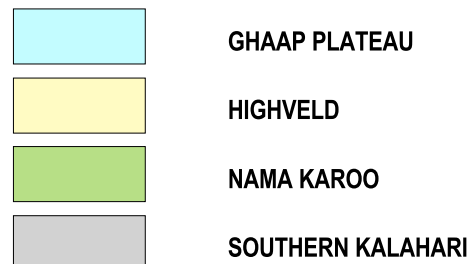
40 0 40 80 120 160 Kilometers







# WMA10 Lower Vaal

Ecoregion Level 1



-  Existing Sites
-  Proposed Macro Sites

26°

27°

28°

29°

26°

27°

28°

29°

21°

22°

23°

24°

25°

26°

21°

22°

23°

24°

25°

26°




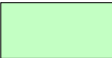
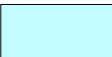
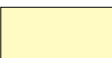


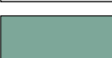
70 0 70 Kilometers




[illegible]

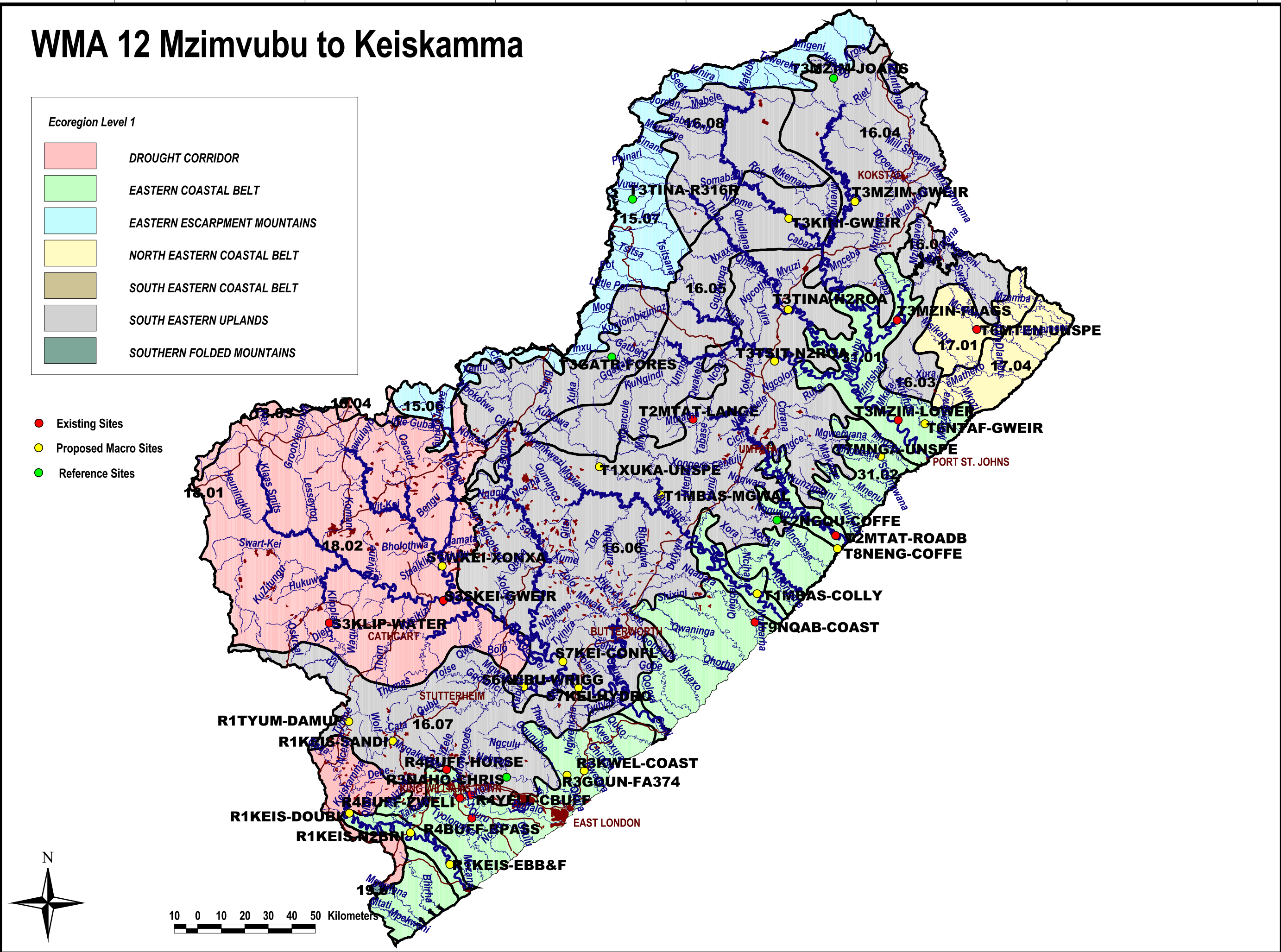


# WMA 12 Mzimvubu to Keiskamma

**Ecoregion Level 1**

	DROUGHT CORRIDOR
	EASTERN COASTAL BELT
	EASTERN ESCARPMENT MOUNTAINS
	NORTH EASTERN COASTAL BELT
	SOUTH EASTERN COASTAL BELT
	SOUTH EASTERN UPLANDS
	SOUTHERN FOLDED MOUNTAINS

-  Existing Sites
-  Proposed Macro Sites
-  Reference Sites

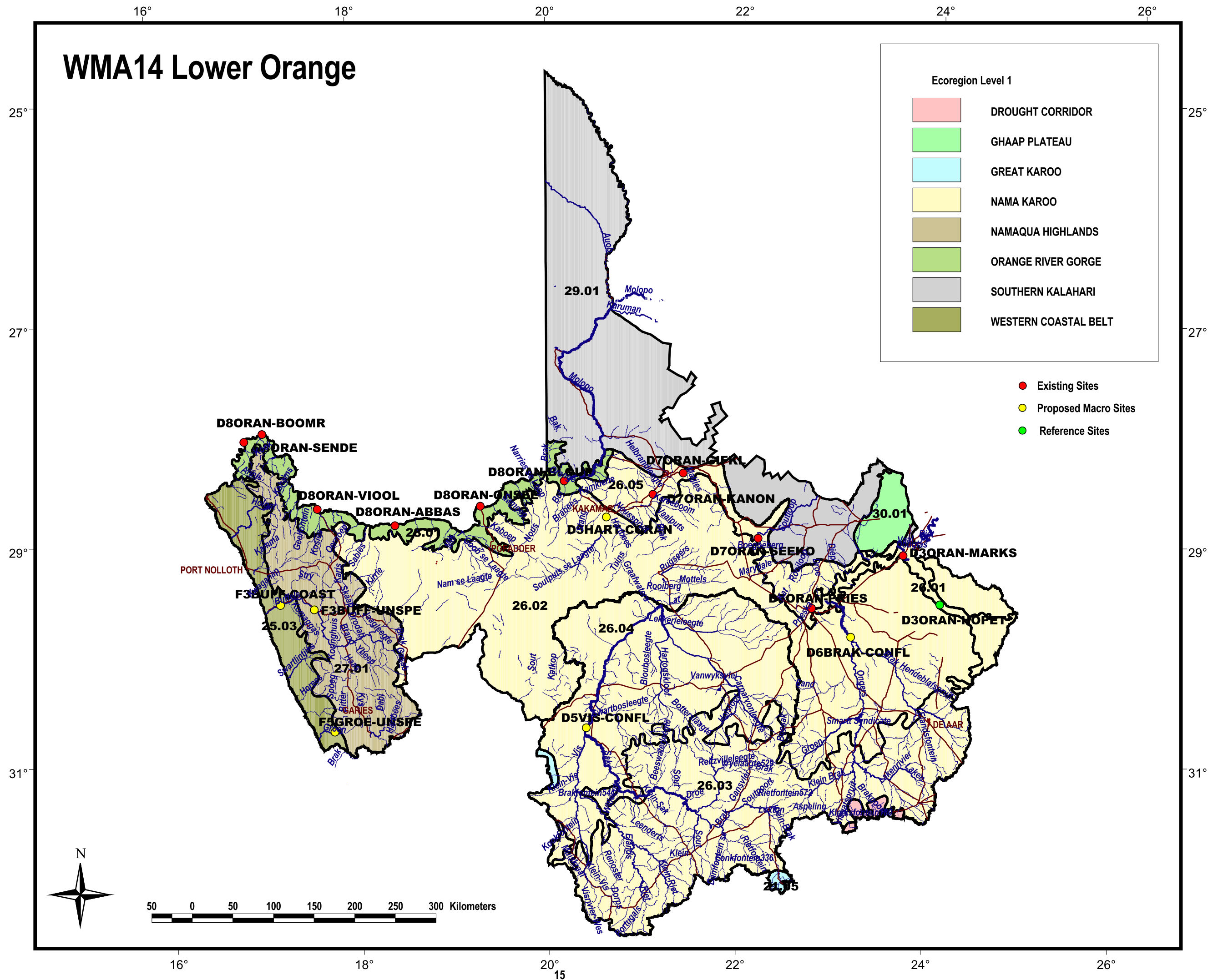


## 29°



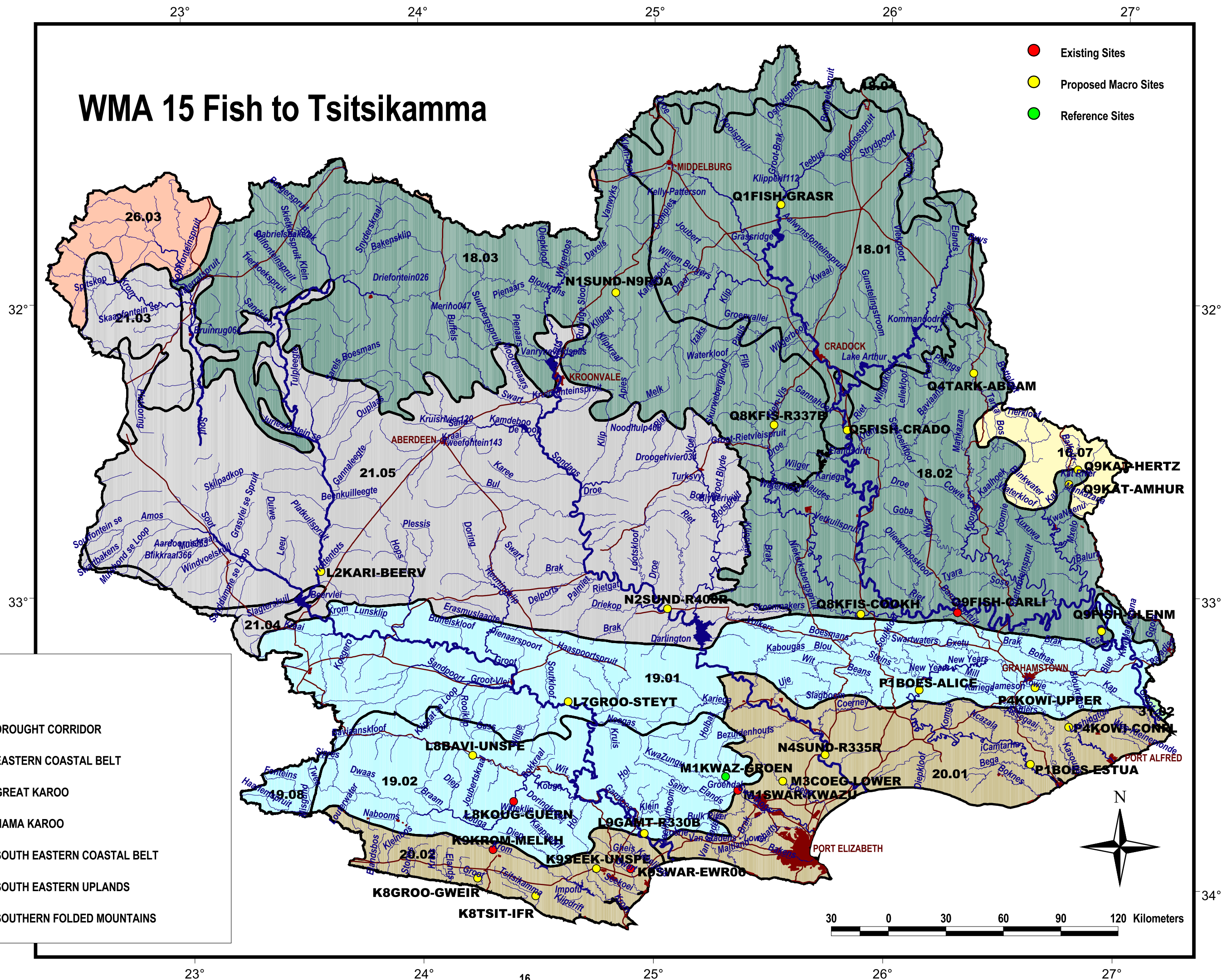
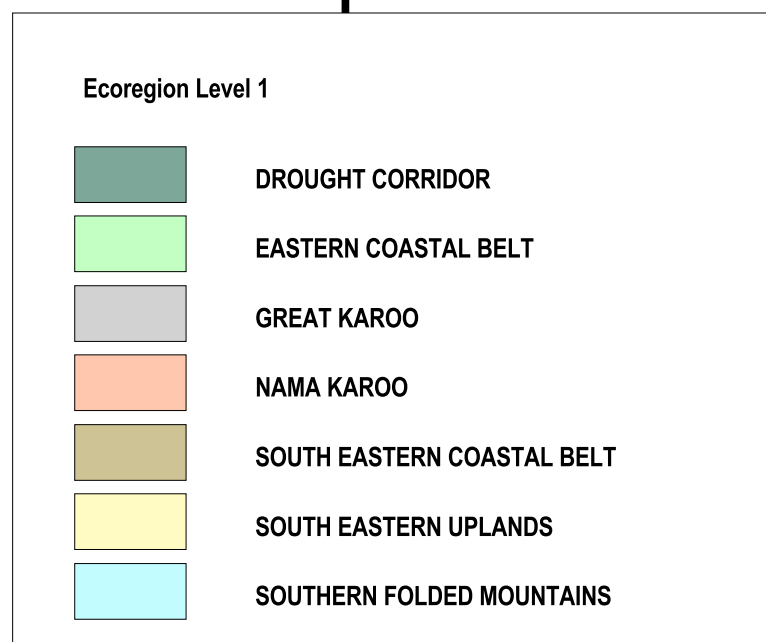


# WMA14 Lower Orange



# WMA 15 Fish to Tsitsikamma

- Existing Sites
- Proposed Macro Sites
- Reference Sites



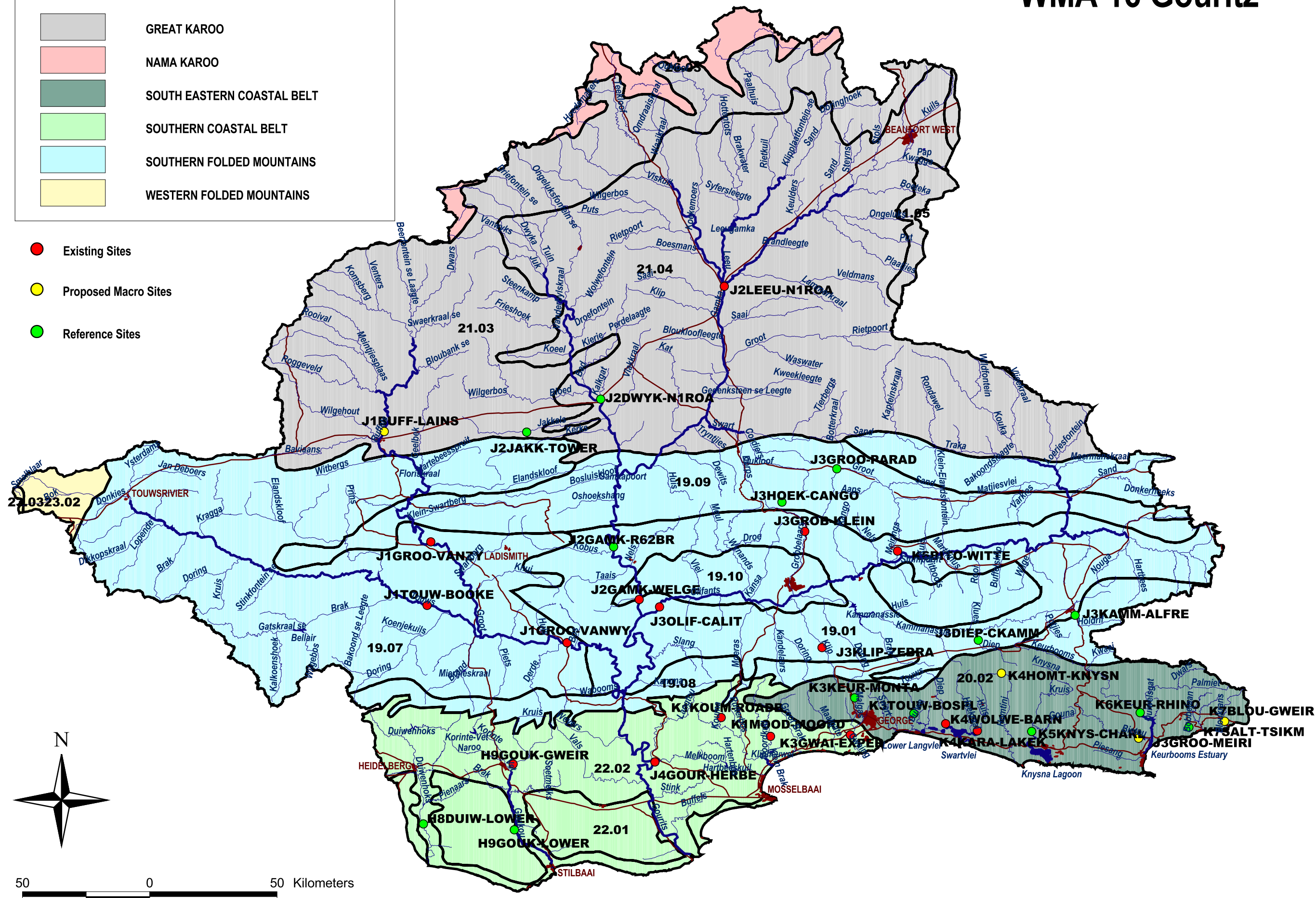


# WMA 16 Gouritz

Ecoregion Level 1

	GREAT KAROO
	NAMA KAROO
	SOUTH EASTERN COASTAL BELT
	SOUTHERN COASTAL BELT
	SOUTHERN FOLDED MOUNTAINS
	WESTERN FOLDED MOUNTAINS

- Existing Sites
- Proposed Macro Sites
- Reference Sites



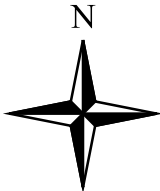
# WMA 17 Olifants Doring

## Ecoregion Level 1

- GREAT KAROO
- NAMA KAROO
- NAMAQUA HIGHLANDS
- SOUTH WESTERN COASTAL BELT
- SOUTHERN FOLDED MOUNTAINS
- WESTERN COASTAL BELT
- WESTERN FOLDED MOUNTAINS

- Existing Sites
- Proposed Macro Sites
- Reference Sites

20 0 20 40 Kilometers





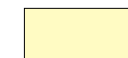
# WMA 18 Breede

19°

20°

21°

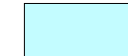
Ecoregion Level 1



SOUTH WESTERN COASTAL BELT



SOUTHERN COASTAL BELT



SOUTHERN FOLDED MOUNTAINS



WESTERN FOLDED MOUNTAINS



Existing Sites



Proposed Macro Sites

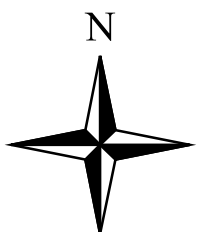


Reference Sites

34°

34°

20 0 20 40 60 80 Kilometers



19°

19

20°

21°

# WMA 19 Berg

