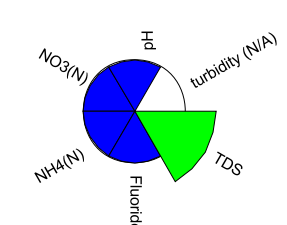


Water quality: fitness for use from a domestic perspective ("hot spot" sample site set)

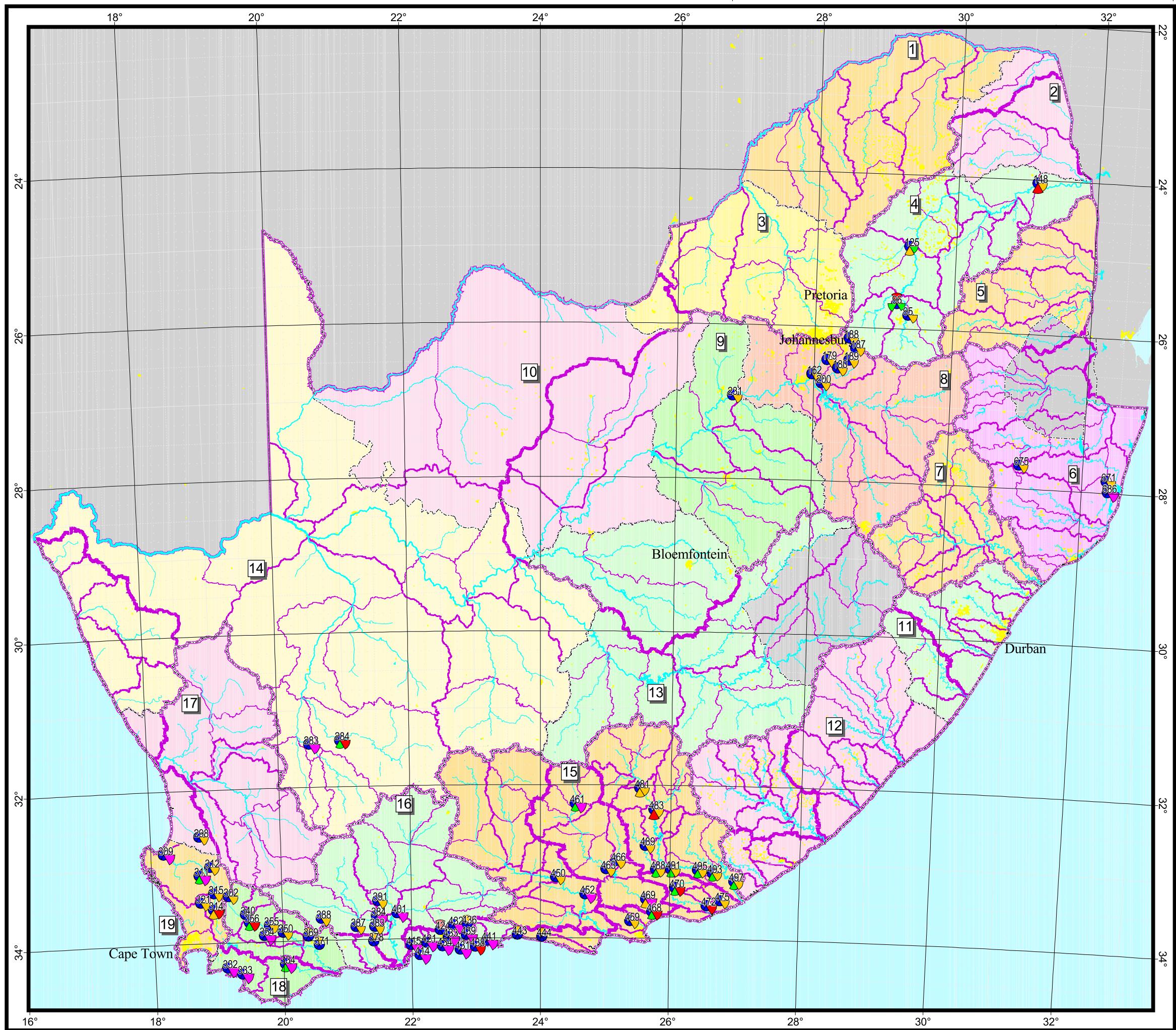
- Sample site
- River
- Water management area
- Primary drainage region
- Secondary drainage region
- Tertiary drainage region
- Dam, lake
- Urban area

Domestic use: "Health"



Colour key for Domestic Health

- pH (pH units)**
  - < 3 Acid burns
  - 3 - 4 Severe irritation of mucous membranes
  - 4 - 4.5 Irritation of mucous membranes
  - 4.5 - 5 Mild irritation of mucous membranes
  - 5 - 9.5 No health effects
  - 9.5 - 10 Mild irritation of mucous membranes
  - 10 - 10.5 Irritation of mucous membranes
  - 10.5 - 11 Severe irritation
  - > 11 Alkali burns
- NO3 (mg/L)**
  - < 6 Negligible health effects
  - 6 - 10 Insignificant risk
  - 10 - 20 Slight chronic risk to some babies
  - 20 - 40 Possible chronic risk to some babies
  - > 40 Increasing acute risk to babies
- NH4 (mg/L)**
  - < 1 Negligible health effects
  - 1 - 2 Unknown health effects
  - 2 - 10 Unknown health effects
  - > 10 Unknown health effects
- F (mg/L)**
  - < 0.7 No health effects
  - 0.7-1 Insignificant effects (sensitive groups) & insignificant tooth staining
  - 1 - 1.5 Increasing effects (sensitive groups) & tooth staining
  - 1.5 - 3.5 Possible health effects (all individuals) & marked tooth staining
  - > 3.5 Increasing risk of health effects & severe tooth staining
- TDS (mg/L)**
  - < 450 No health effects
  - 450 - 1000 Insignificant effect on sensitive groups
  - 1000 - 2400 Slight possibility of salt overload in sensitive groups
  - 2400 - 3400 Possible health risk to all individuals
  - > 3400 Increasing risk of dehydration
- Turbidity (NTU)**
  - < 0.1 No health effects
  - 0.1 - 1 Slight risk of potential health effects
  - 1 - 20 Possibility of secondary health effects
  - 20 - 50 Secondary health effects
  - > 50 Serious health effects common in all users



Albers Equal Area projection  
 Clarke 1880 spheroid  
 24°E central meridian  
 18°S 32°S standard parallels  
 iwqs@dwaf.gov.za  
<http://www-dwaf.pwv.gov.za/iwqs/>  
 2002-04-05 09:19