

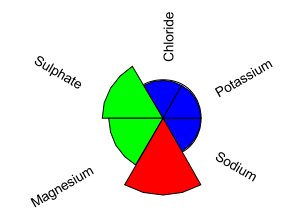
# National assessment of water quality

Map 7

## Salinity effects on domestic use (national sample site set)

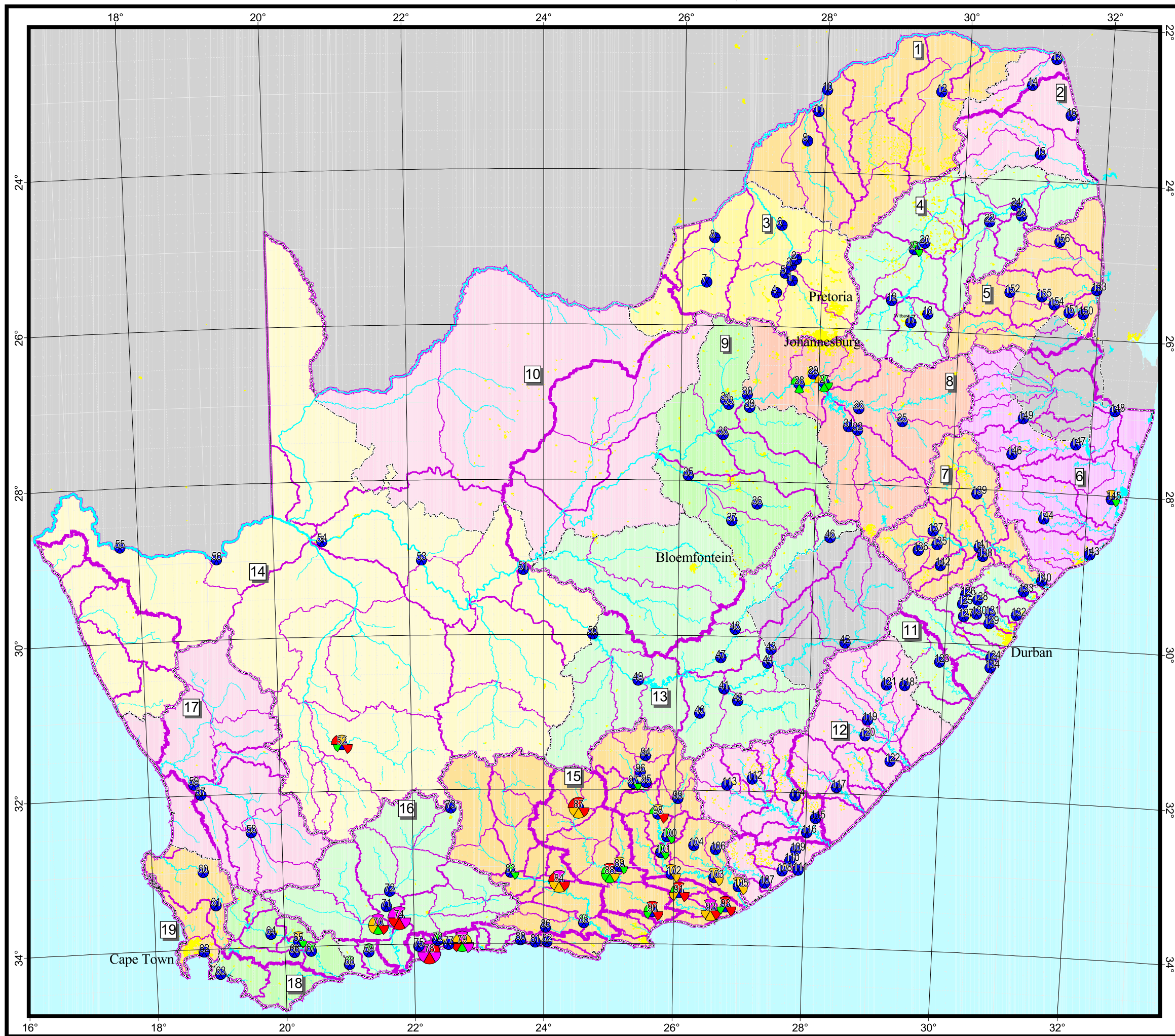
- Sample site
- River
- Water management area
- Primary drainage region
- Secondary drainage region
- Tertiary drainage region
- Dam, lake
- Urban area

### Domestic use: "Salinity"



### Colour Key for Domestic Salts

- |                   |  |                                                                   |
|-------------------|--|-------------------------------------------------------------------|
| <b>Cl (mg/L)</b>  |  | < 100 No health effects                                           |
|                   |  | 100 - 200 Insignificant health effects                            |
|                   |  | 200 - 600 Increasing health risk to sensitive groups              |
|                   |  | 600 - 1200 Possible long-term health effects                      |
|                   |  | > 1200 Dehydration in infants, nausea & vomiting                  |
| <b>SO4 (mg/L)</b> |  | < 200 No health effects                                           |
|                   |  | 200 - 400 Insignificant health effects                            |
|                   |  | 400-600 Slight chance of diarrhoea (sensitive grps): adaptation   |
|                   |  | 600-1000 Diarrhoea possible: poor adaptation (sensitive individu) |
|                   |  | > 1000 High chance of diarrhoea - no adaptation                   |
| <b>Mg (mg/L)</b>  |  | < 70 No health effects                                            |
|                   |  | 70 - 100 Insignificant effects in sensitive groups only           |
|                   |  | 100 - 200 Potential diarrhoea in all individuals                  |
|                   |  | 200 - 400 Diarrhoea in all individuals                            |
|                   |  | > 400                                                             |
| <b>Ca (mg/L)</b>  |  | < 80 No health effects                                            |
|                   |  | 80 - 150 Insignificant health effects                             |
|                   |  | 150 - 300 Increased effects in sensitive groups only              |
|                   |  | > 300 Chronic health effects in sensitive groups only             |
| <b>Na (mg/L)</b>  |  | < 100 Negligible health effects                                   |
|                   |  | 100 - 200 Insignificant health effects                            |
|                   |  | 200 - 400 Slight risk to some sensitive groups                    |
|                   |  | 400 - 1000 Possible health risk, particularly in sensitive groups |
|                   |  | > 1000                                                            |
| <b>K (mg/L)</b>   |  | < 25 No health effects                                            |
|                   |  | 25 - 50 Insignificant health effects                              |
|                   |  | 50 - 100 Slight risk to some sensitive groups                     |
|                   |  | 100 - 500 Possible health effects                                 |
|                   |  | > 500 Definite health risk to all individuals                     |



Albers Equal Area projection  
 Clarke 1880 spheroid  
 24°E central meridian  
 18°S 32°S standard parallels  
 iwqs@dwaf.gov.za  
<http://www-dwaf.pvw.gov.za/iwqs/>  
 2002-04-24 14:05