

## APPENDIX B

---

### DETAILS OF AFFECTED PROPERTIES & MAPS

**BP SS1**

Farm Name	HANOVER
Farm Number and Registration Division	341 KQ
Magisterial District	Thabazimbi
Farm Subdivision name	Remainder of 341
Farm Subdivision number	RE/341
SG 21-digit code	T0KQ00000000034100000

Farm Name	MOOIVALEI
Farm Number and Registration Division	342 KQ
Magisterial District	Thabazimbi
Farm Subdivision name	Remainder of 342
Farm Subdivision number	RE/342
SG 21-digit code	T0KQ00000000034200000

**BP 25**

Farm Name	MECKLENBURG
Farm Number and Registration Division	310 KQ
Magisterial District	Thabazimbi
Farm Subdivision name	Remainder of Portion 1
Farm Subdivision number	RE/1/310
SG 21-digit code	T0KQ00000000031000001

**BP 30**

Farm Name	KAROOBULT
Farm Number and Registration Division	126 KQ
Magisterial District	Thabazimbi
Farm Subdivision name	-
Farm Subdivision number	-
SG 21-digit code	T0KQ00000000012600000

**BP 35**

Farm Name	LEEUEWBOSCH
Farm Number and Registration Division	129 KQ
Magisterial District	Thabazimbi
Farm Subdivision name	Remainder of Portion 1
Farm Subdivision number	RE/1/129
SG 21-digit code	T0KQ00000000012900001

**BP 28**

Farm Name	TARANTAALPAN
Farm Number and Registration Division	132 KQ
Magisterial District	Thabazimbi
Farm Subdivision name	Remainder of 132
Farm Subdivision number	RE/132
SG 21-digit code	T0KQ00000000013200000

**BP 33**

Farm Name	RUIGTEVLEY
Farm Number and Registration Division	97 KQ
Magisterial District	Thabazimbi
Farm Subdivision name	Portion 5 of 97
Farm Subdivision number	5/97
SG 21-digit code	T0KQ00000000009700005

**BP 41**

Farm Name	GROENRIVIER
Farm Number and Registration Division	95 KQ
Magisterial District	Thabazimbi
Farm Subdivision name	Remainder of Portion 37
Farm Subdivision number	RE/37/95
SG 21-digit code	T0KQ00000000009500037

Farm Name	MATSULAN
Farm Number and Registration Division	98 KQ
Magisterial District	909
Farm Subdivision name	
Farm Subdivision number	RE/98
SG 21-digit code	T0KQ00000000009800000

Farm Name	KALABASPAN
Farm Number and Registration Division	92 KQ
Magisterial District	909
Farm Subdivision name	Portion 1
Farm Subdivision number	1/92
SG 21-digit code	T0KQ00000000009200001

**BP 38**

Farm Name	HARLEM OOST
Farm Number and Registration Division	51 KQ
Magisterial District	Thabazimbi
Farm Subdivision name	PORTION 16
Farm Subdivision number	16/51
SG 21-digit code	T0KQ0000000005100016

**BP 39**

Farm Name	RIETFontein
Farm Number and Registration Division	15 KQ
Magisterial District	Lephalale
Farm Subdivision name	REMAINDER
Farm Subdivision number	RE/15
SG 21-digit code	T0KQ0000000001500000

Farm Name	SCHOONWATER
Farm Number and Registration Division	14 KQ
Magisterial District	Lephalale
Farm Subdivision name	PORTION 1
Farm Subdivision number	1/14
SG 21-digit code	T0KQ0000000001400000

**BP 42**

Farm Name	INKERMANN
Farm Number and Registration Division	819 KQ
Magisterial District	Lephalale
Farm Subdivision name	REMAINDER
Farm Subdivision number	RE/819
SG 21-digit code	T0KQ00000000081900000

**BP 44**

Farm Name	DIEPSPRUIT
Farm Number and Registration Division	386 LQ
Magisterial District	Lephalale
Farm Subdivision name	-
Farm Subdivision number	-
SG 21-digit code	T0LQ00000000038600000



**BP 43**

Farm Name	ZANDFONTEIN
Farm Number and Registration Division	382 LQ
Magisterial District	Lephalale
Farm Subdivision name	PORTION 2
Farm Subdivision number	2/382
SG 21-digit code	T0LQ00000000038200002

**BP 53**

Farm Name	ROOIPAN
Farm Number and Registration Division	357 LQ
Magisterial District	Lephalale
Farm Subdivision name	PORTION 4
Farm Subdivision number	4/357
SG 21-digit code	T0LQ00000000035700004

**BP 52**

Farm Name	GROOTLAAGTE
Farm Number and Registration Division	354 LQ
Magisterial District	Lephalale
Farm Subdivision name	REMAINDER
Farm Subdivision number	RE/354
SG 21-digit code	T0LQ00000000035400000

**BP 50**

Farm Name	LELIEFONTEIN
Farm Number and Registration Division	672 LQ
Magisterial District	Lephalale
Farm Subdivision name	PORTION 1
Farm Subdivision number	1/672
SG 21-digit code	T0LQ00000000067200001

**BP 48**

Farm Name	ZANDHEUVEL
Farm Number and Registration Division	356 LQ
Magisterial District	Lephalale
Farm Subdivision name	PORTION 1
Farm Subdivision number	1/356
SG 21-digit code	T0LQ00000000035600001

Farm Name	ZANDHEUVEL
Farm Number and Registration Division	356 LQ
Magisterial District	Lephalale
Farm Subdivision name	REMAINDER
Farm Subdivision number	RE/356
SG 21-digit code	T0LQ00000000035600000

**BP 49**

Farm Name	SCHULDPADFONTEIN
Farm Number and Registration Division	328 LQ
Magisterial District	Lephalale
Farm Subdivision name	REMAINDER
Farm Subdivision number	RE/328
SG 21-digit code	T0LQ00000000032800000

**BP 15**

Farm Name	VANGPAN
Farm Number and Registration Division	294 LQ
Magisterial District	Lephalale
Farm Subdivision name	PORTION 1
Farm Subdivision number	1/294
SG 21-digit code	T0LQ00000000029400001

**BP 46**

Farm Name	ZANDBULT
Farm Number and Registration Division	300 LQ
Magisterial District	Lephalale
Farm Subdivision name	-
Farm Subdivision number	-
SG 21-digit code	T0LQ00000000030000000

**BP 59**

Farm Name	PONTES ESTATES
Farm Number and Registration Division	712 LQ
Magisterial District	Lephalale
Farm Subdivision name	-
Farm Subdivision number	-
SG 21-digit code	T0LQ00000000071200000

**BP 13**

Farm Name	PONTES ESTATES
Farm Number and Registration Division	744 LQ
Magisterial District	Lephalale
Farm Subdivision name	-
Farm Subdivision number	-
SG 21-digit code	T0LQ00000000074400000

**BP 14**

Farm Name	VERGULDE HELM
Farm Number and Registration Division	321 LQ
Magisterial District	Lephalale
Farm Subdivision name	-
Farm Subdivision number	-
SG 21-digit code	T0LQ00000000032100000

**BP 51**

Farm Name	NAAUW ONTKOMEN
Farm Number and Registration Division	509 LQ
Magisterial District	Lephalale
Farm Subdivision name	-
Farm Subdivision number	-
SG 21-digit code	T0LQ00000000050900000



Figure 1: Properties that are directly affected by and adjacent to the proposed BP SS1



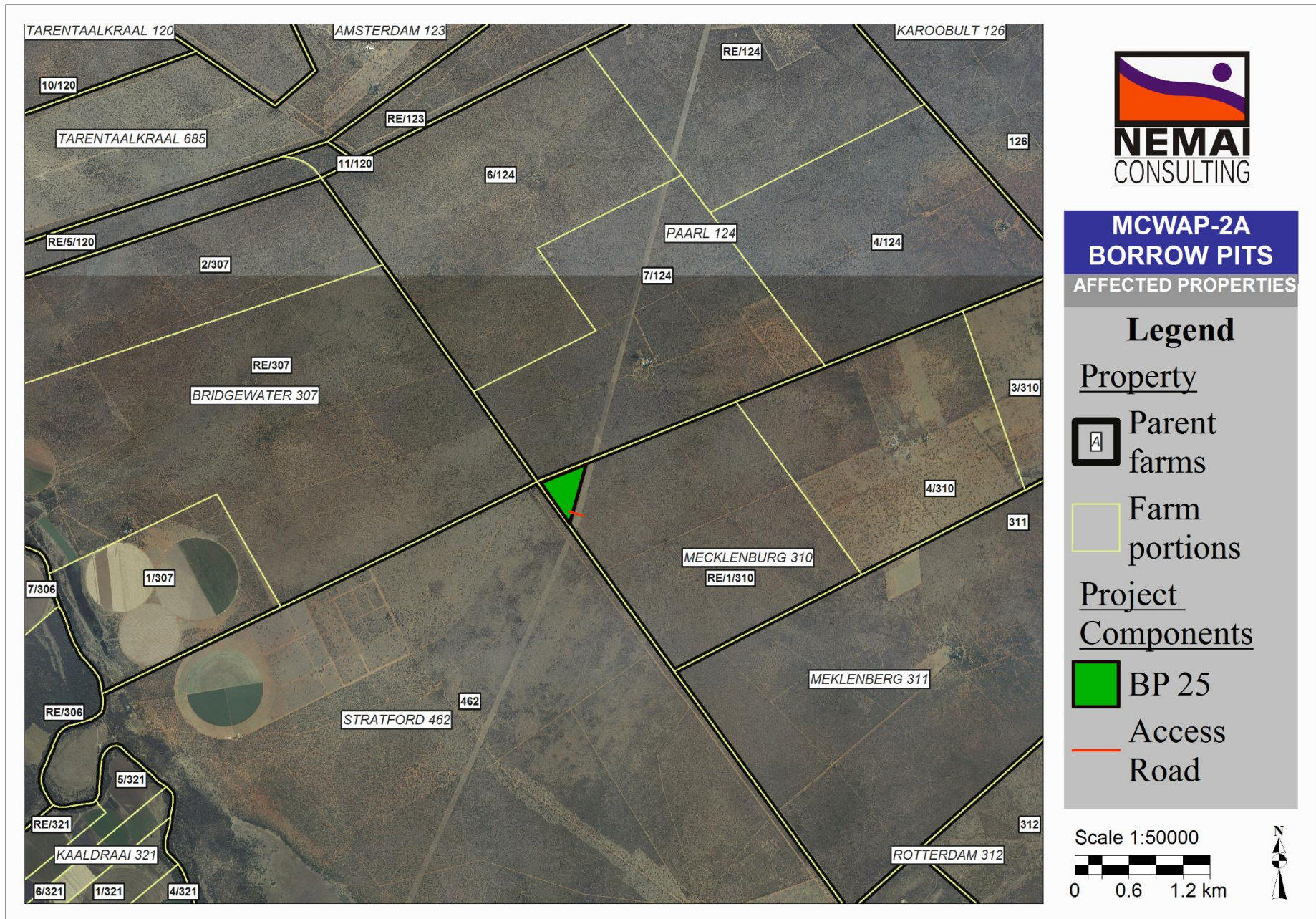
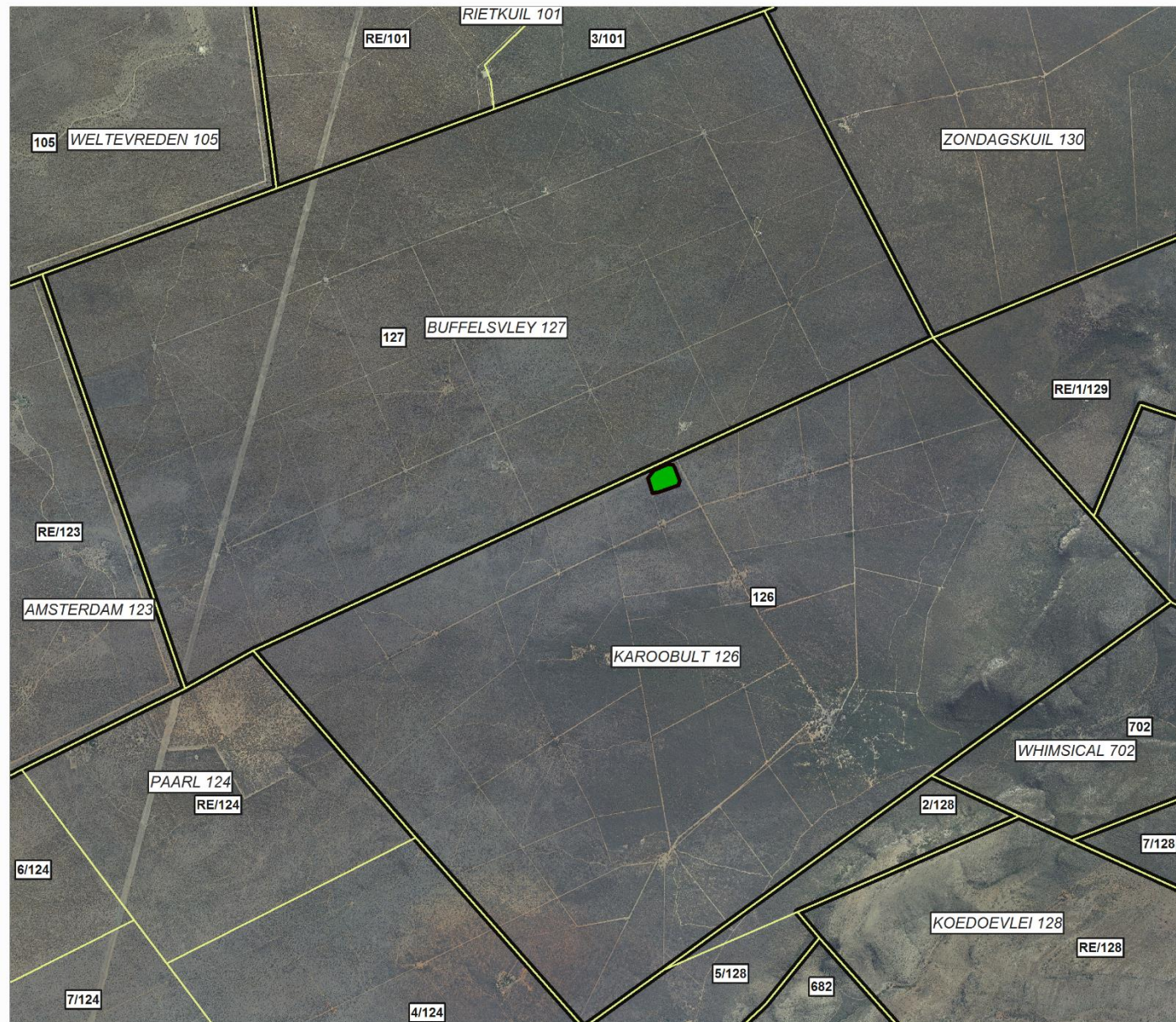


Figure 2: Properties that are directly affected by and adjacent to the proposed BP 25






**MCWAP-2A  
BORROW PITS  
AFFECTED PROPERTIES**

**Legend**

Property

 Parent farms

 Farm portions

Project Components

 BP 30

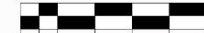
Scale 1:50000  
  
 0 0.6 1.2 km



Figure 3: Properties that are directly affected by and adjacent to the proposed BP 30



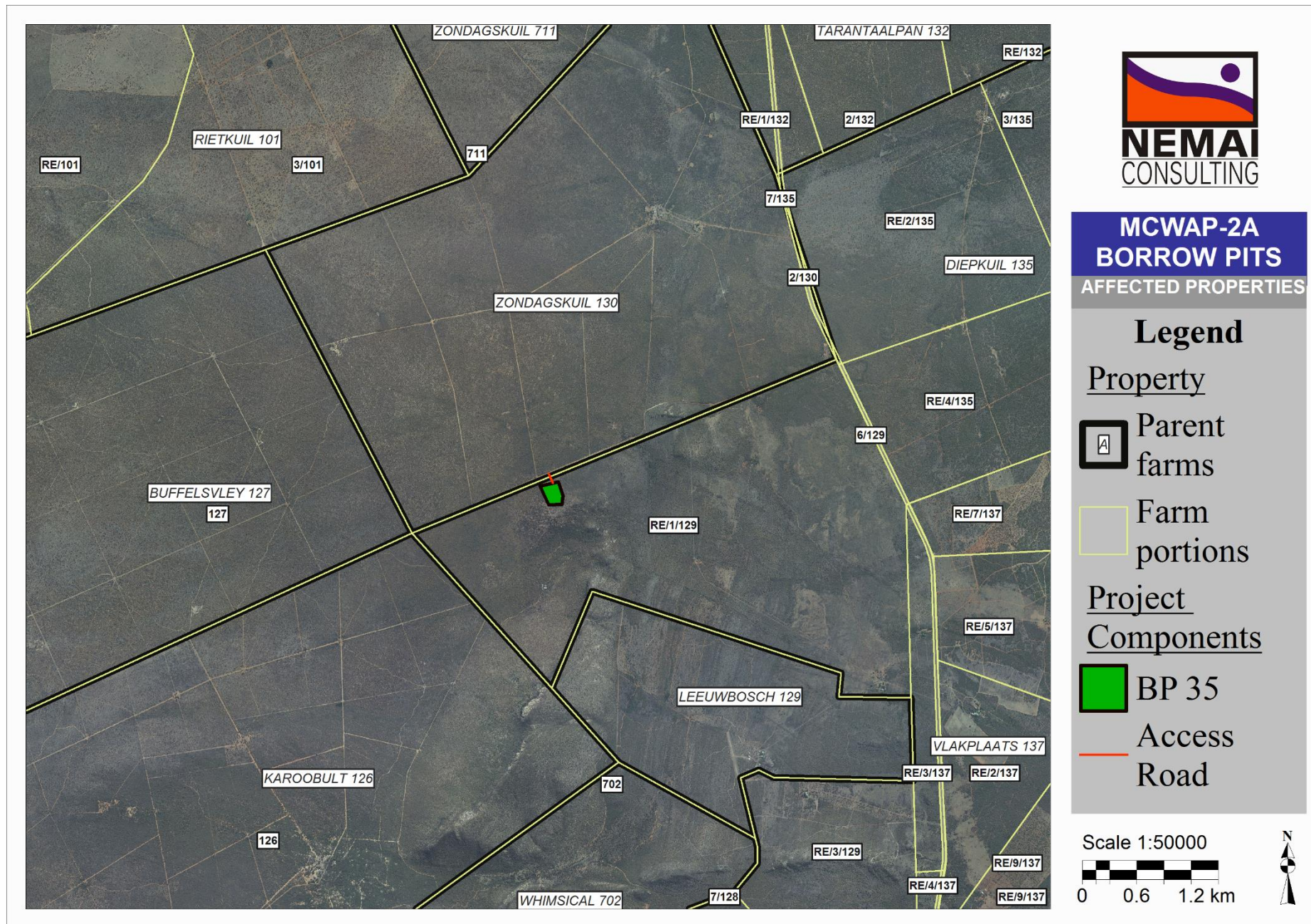


Figure 4: Properties that are directly affected by and adjacent to the proposed BP 35







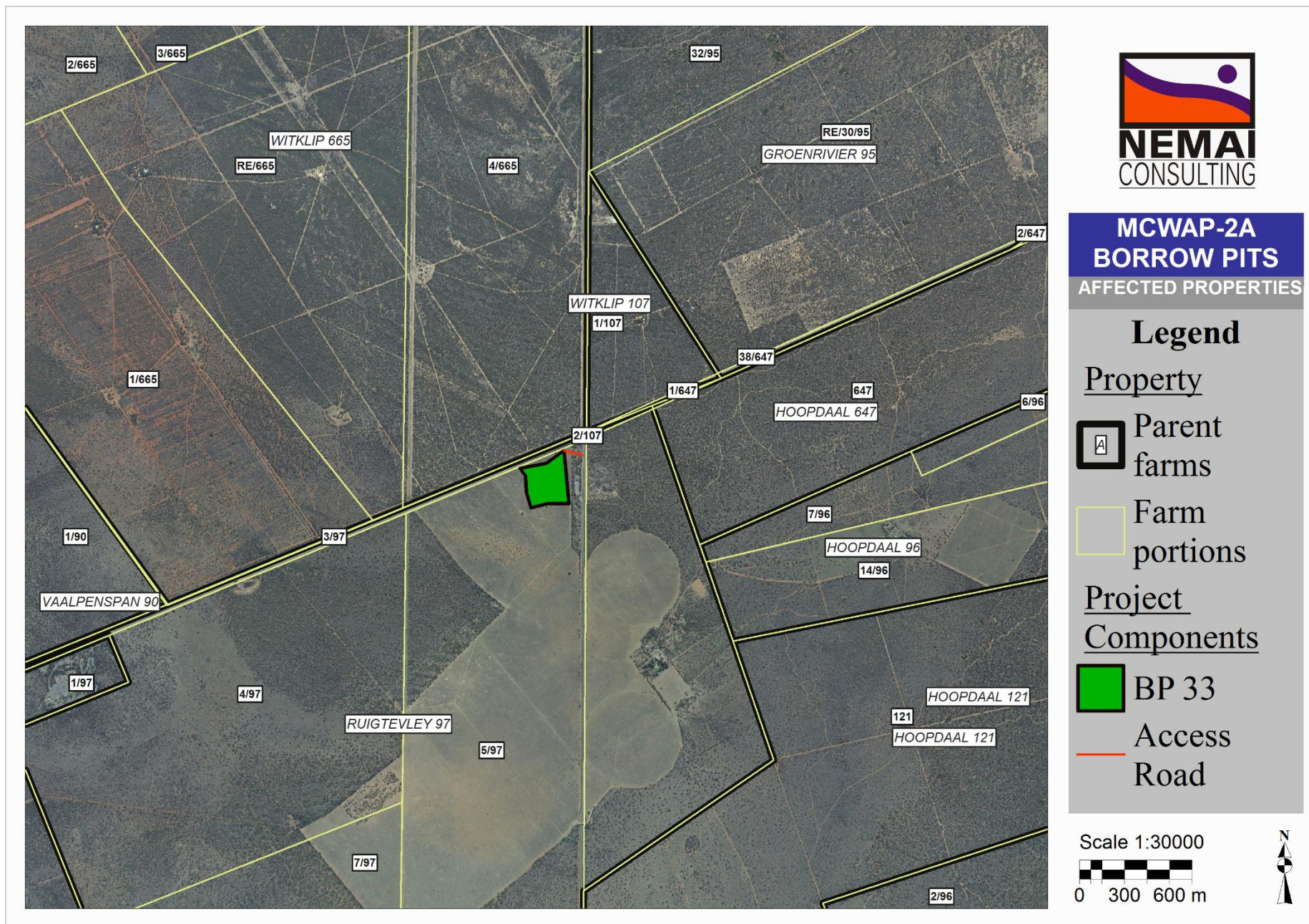
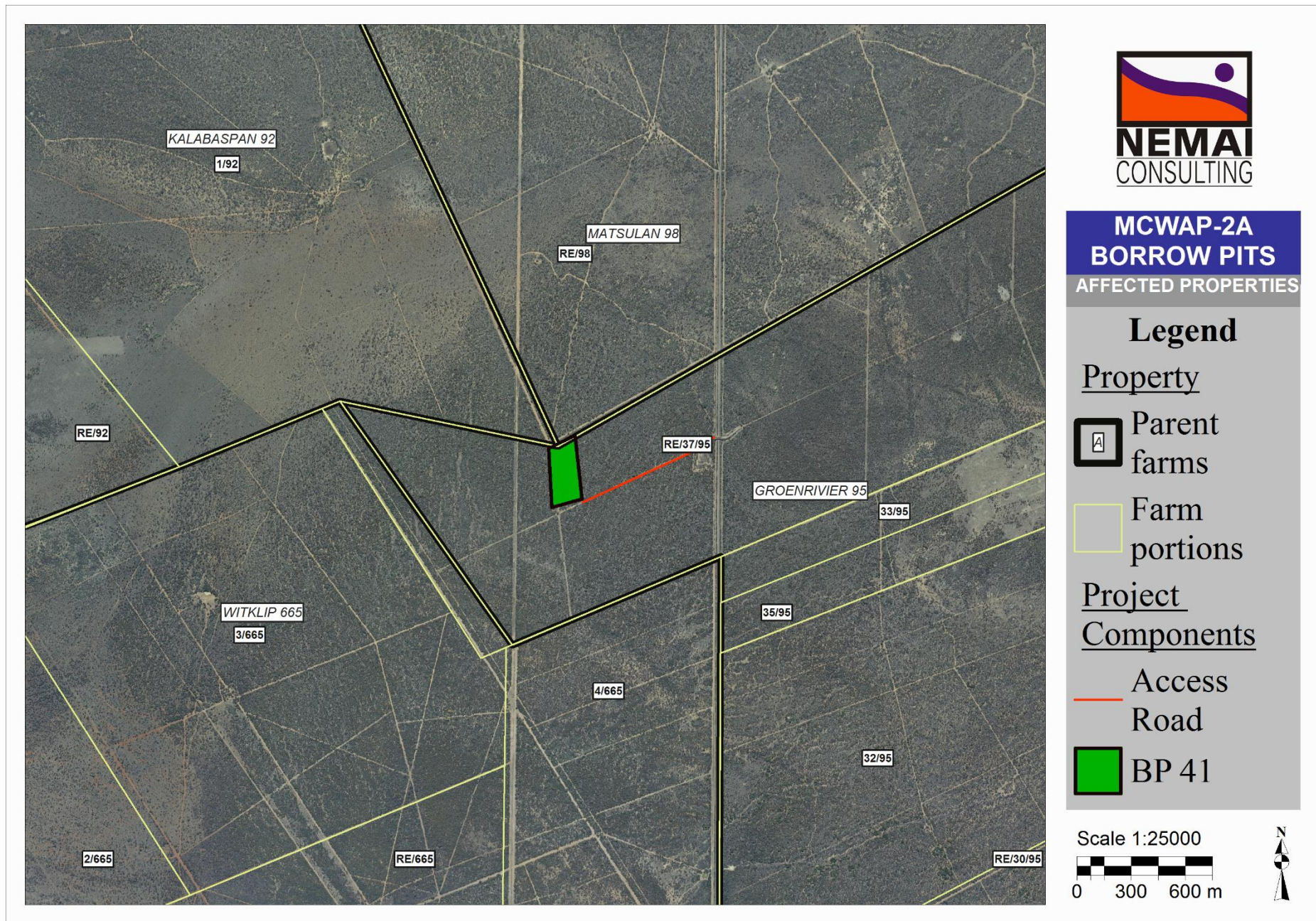


Figure 6: Properties that are directly affected by and adjacent to the proposed BP 33







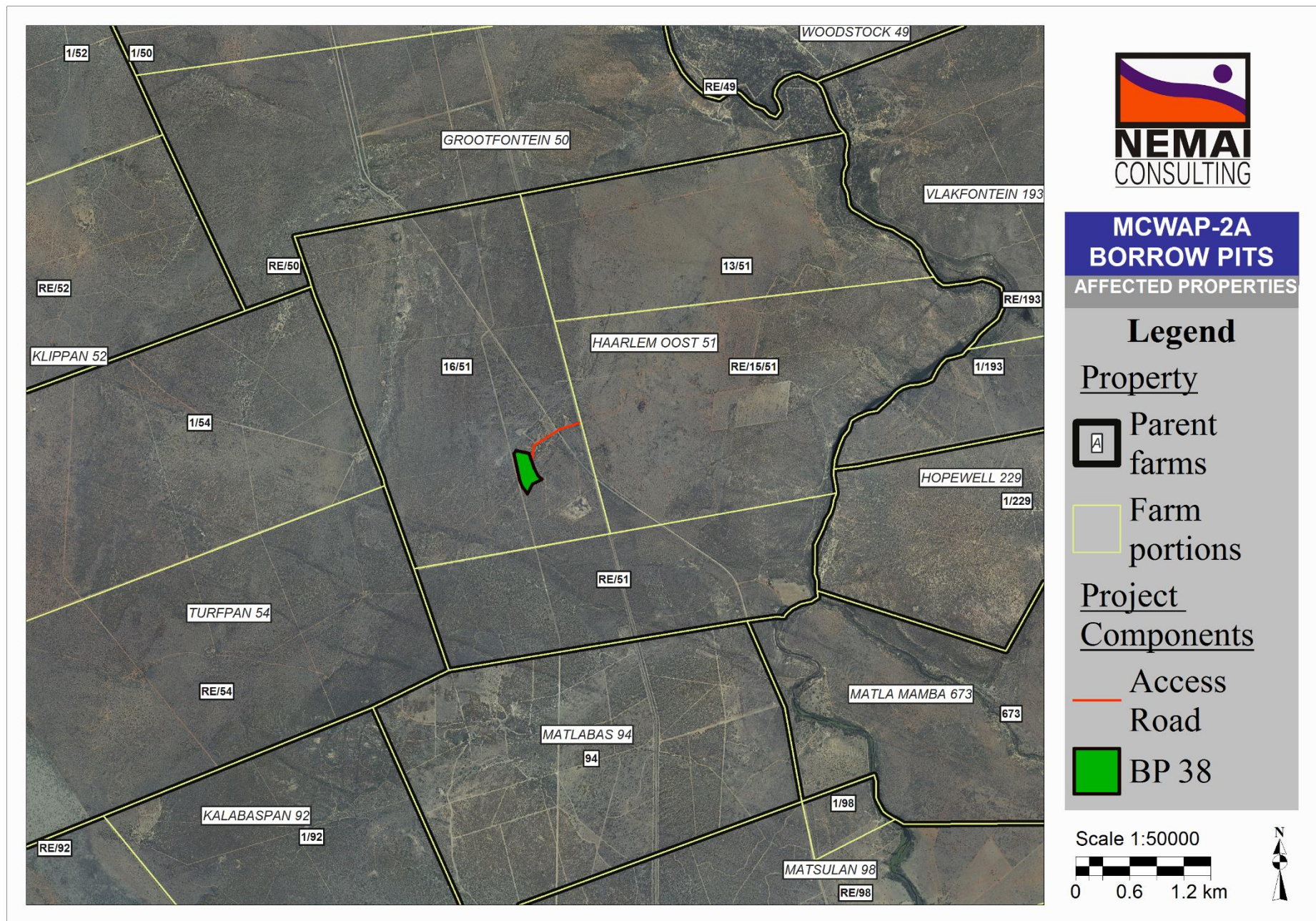


Figure 8: Properties that are directly affected by and adjacent to the proposed BP 38



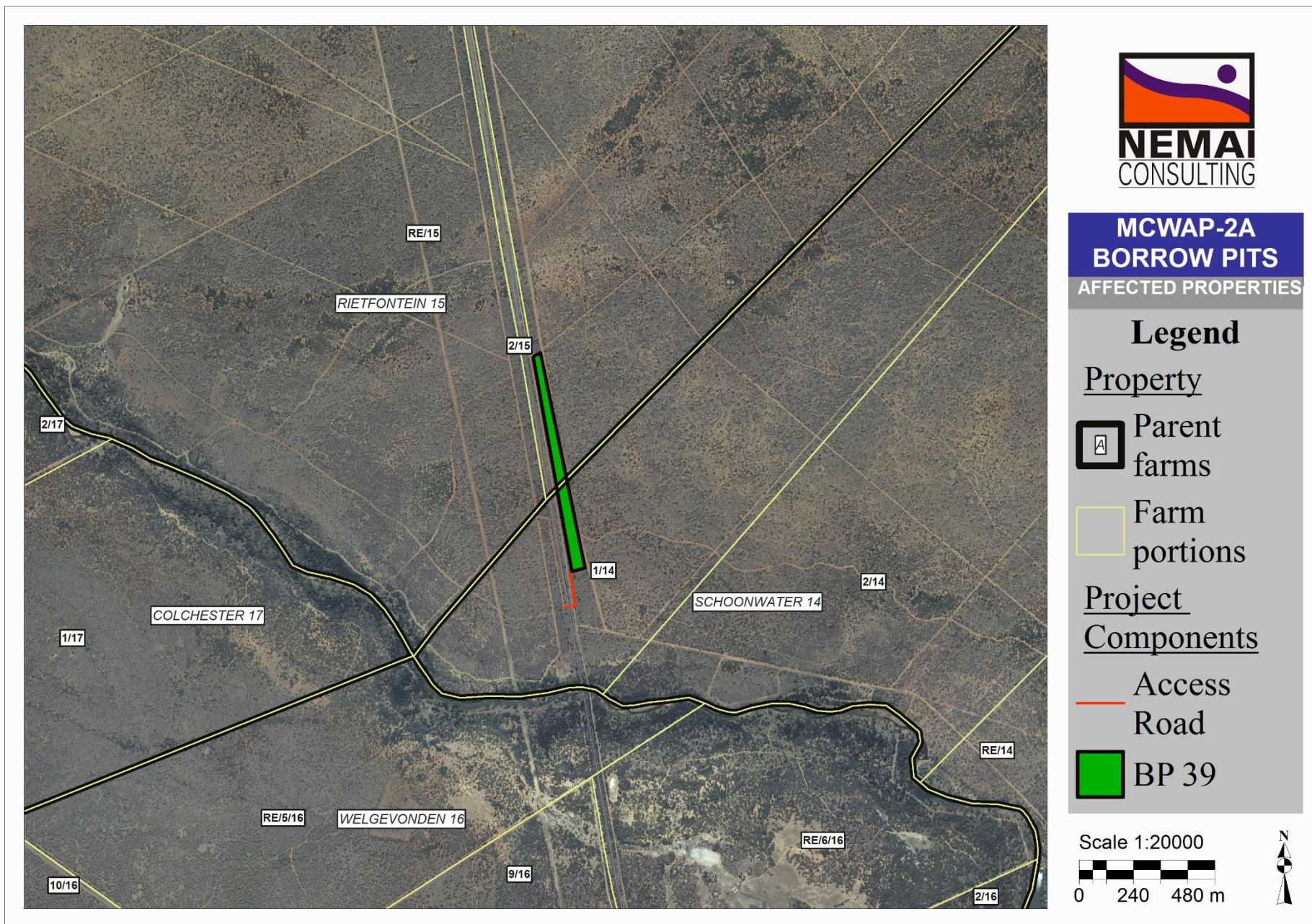


Figure 9: Properties that are directly affected by and adjacent to the proposed BP 39



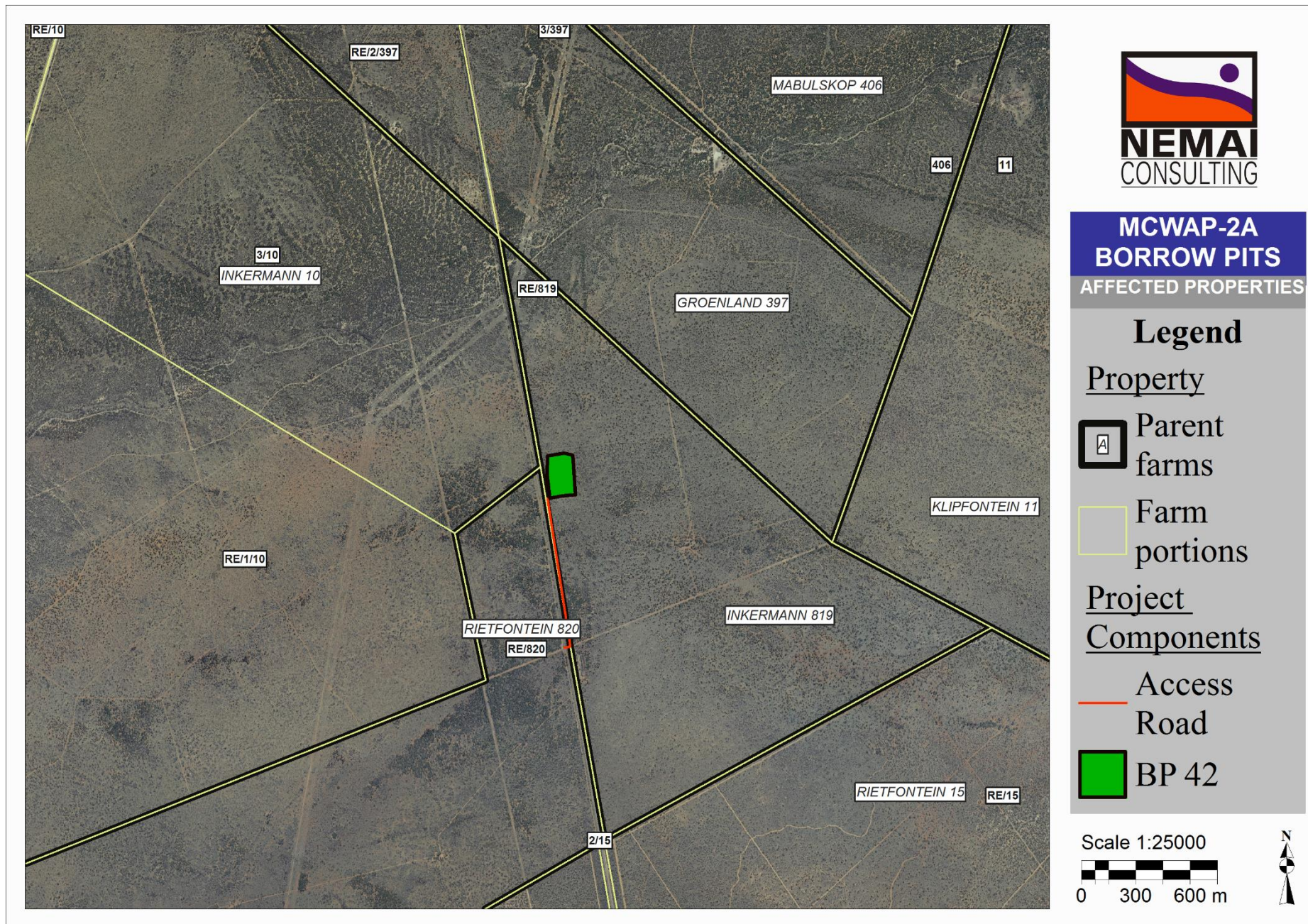


Figure 10: Properties that are directly affected by and adjacent to the proposed BP 42



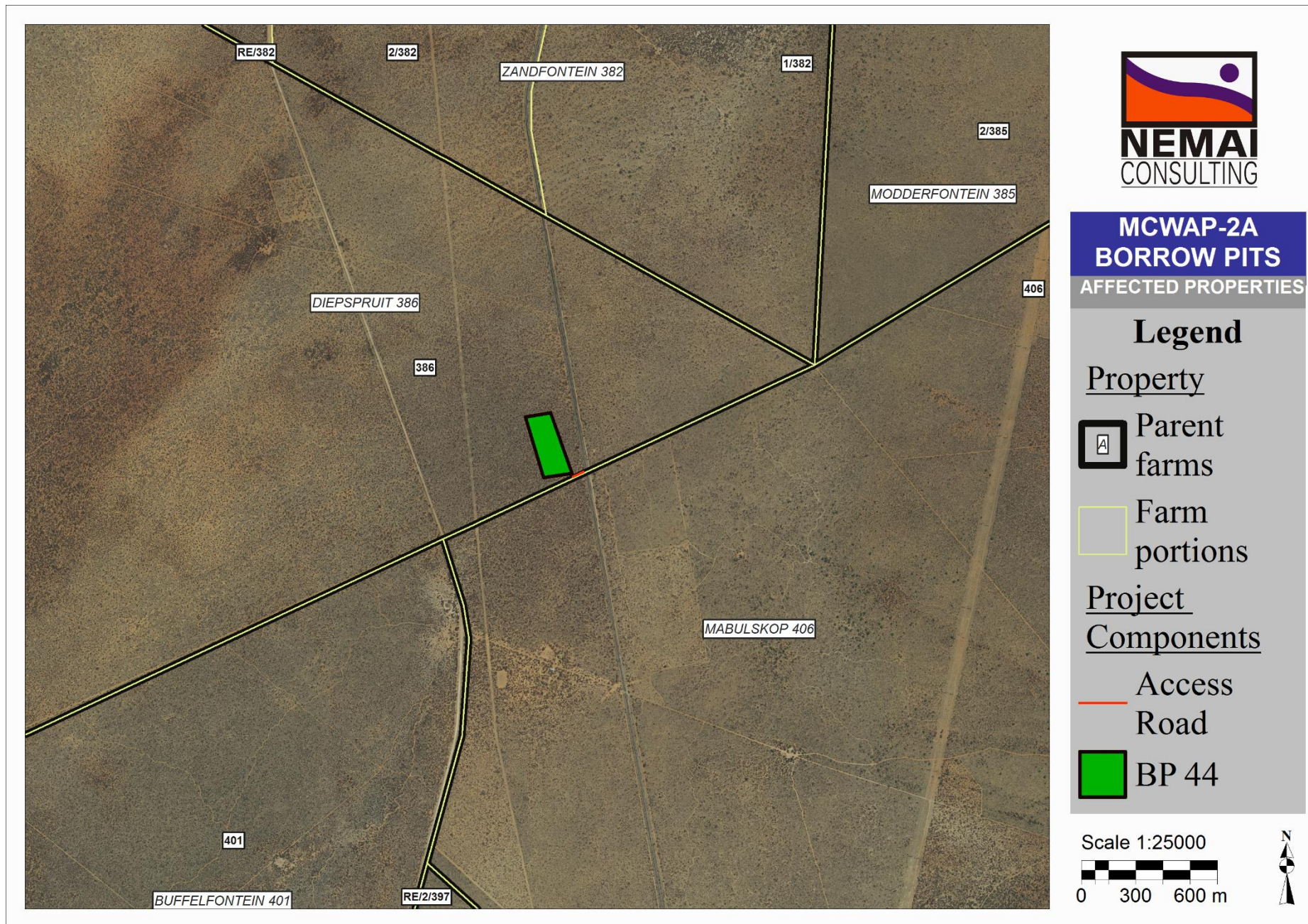


Figure 11: Properties that are directly affected by and adjacent to the proposed BP 44



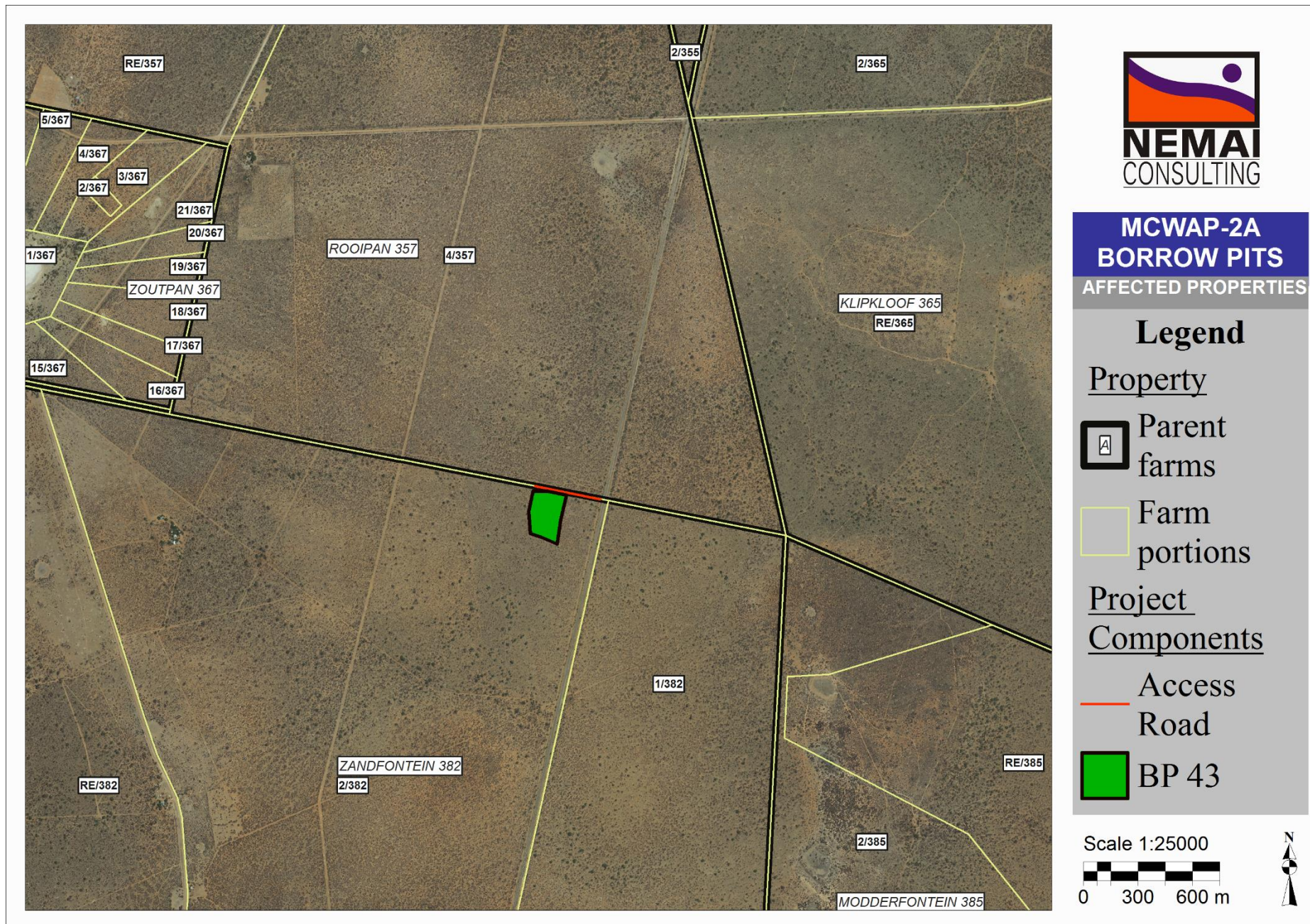


Figure 12: Properties that are directly affected by and adjacent to the proposed BP 43



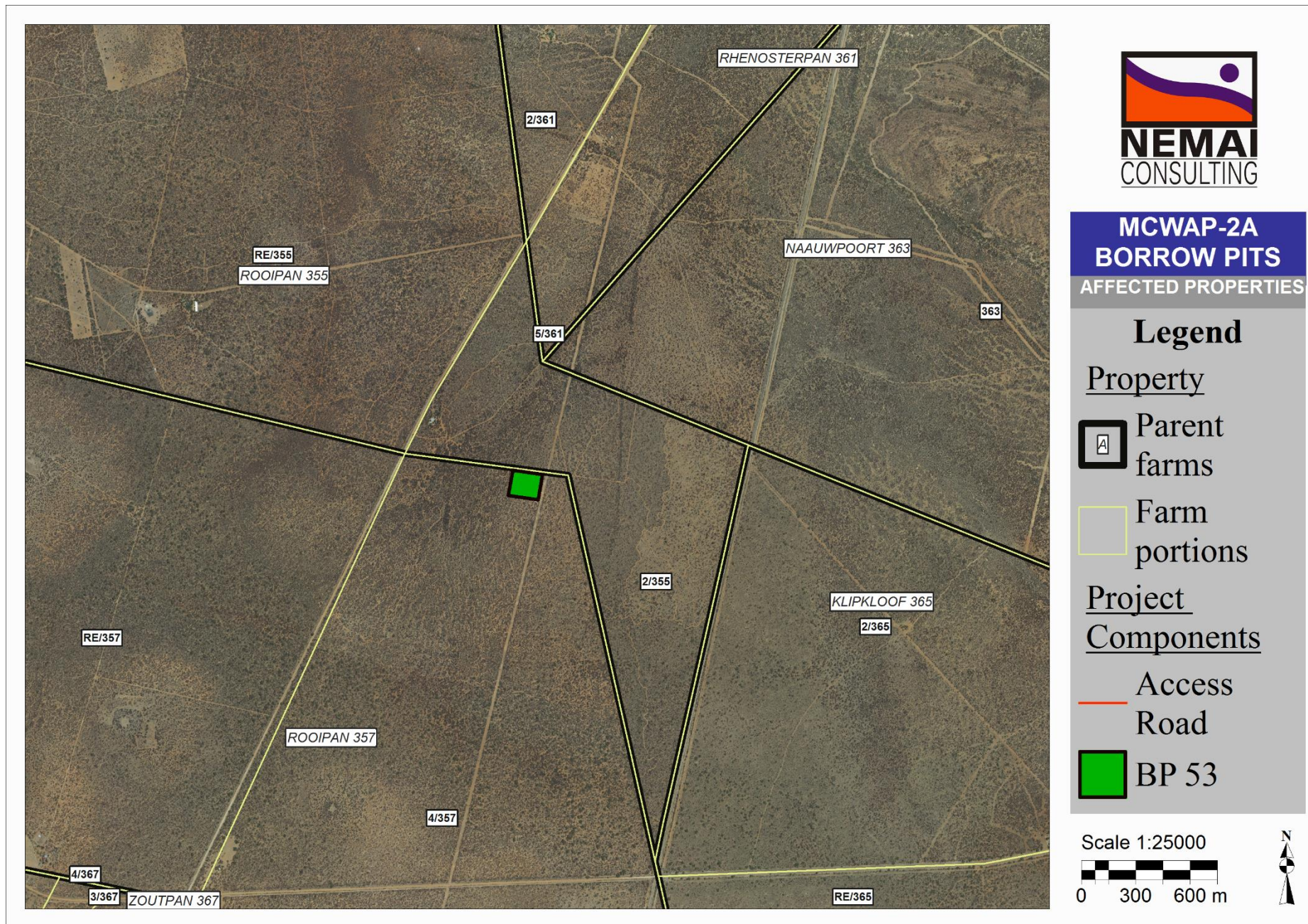


Figure 13: Properties that are directly affected by and adjacent to the proposed BP 53



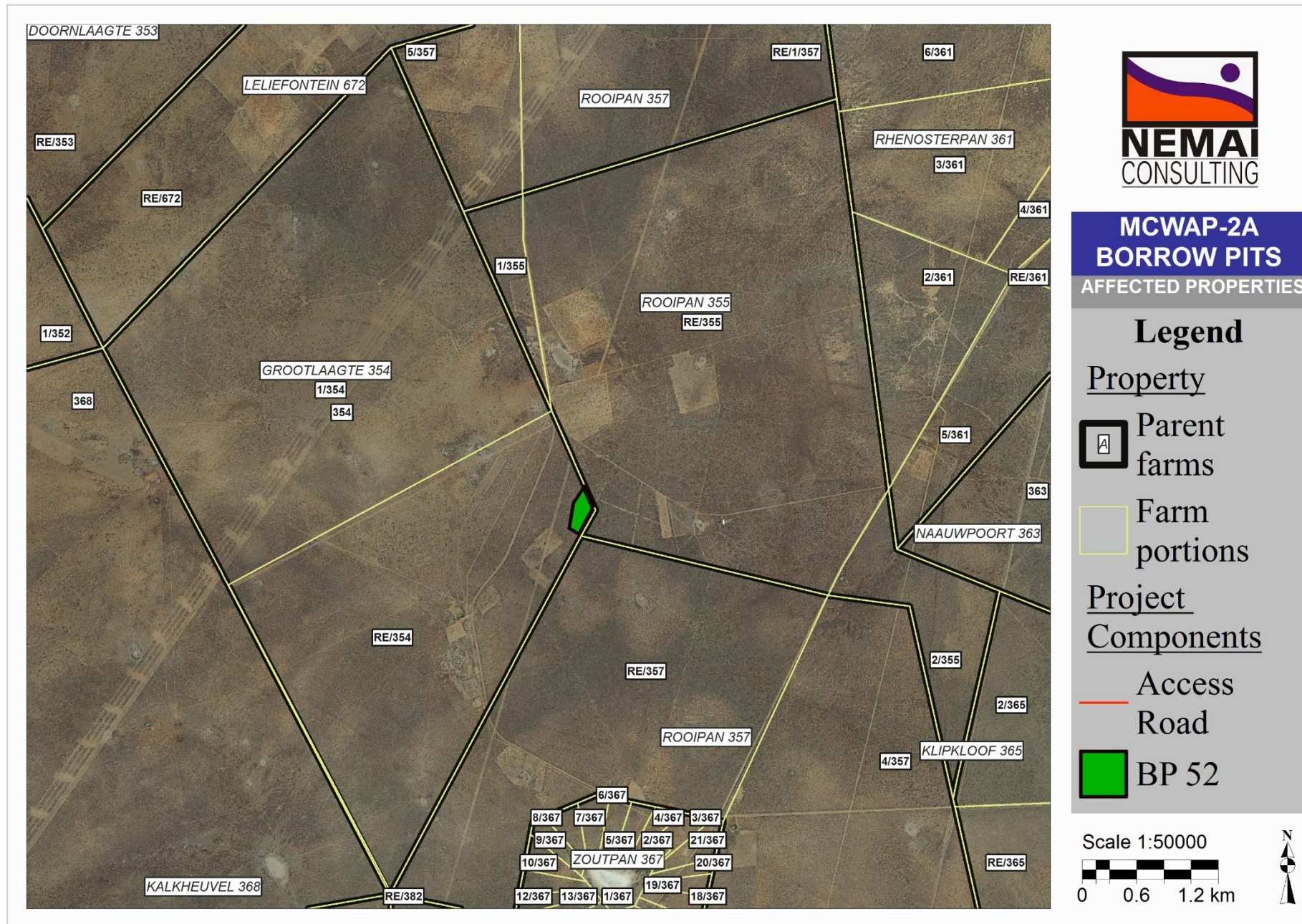


Figure 14: Properties that are directly affected by and adjacent to the proposed BP 52



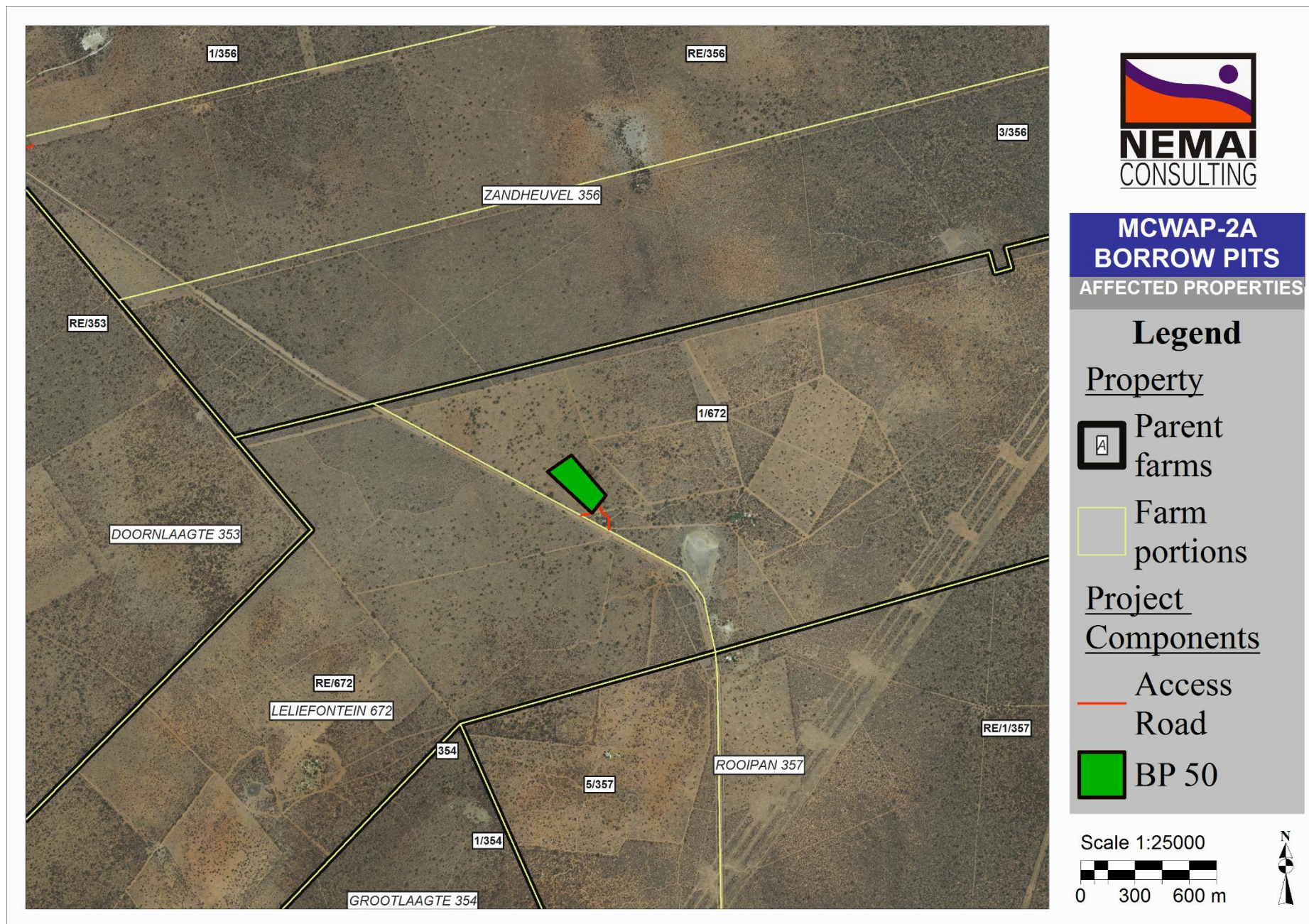


Figure 15: Properties that are directly affected by and adjacent to the proposed BP 50



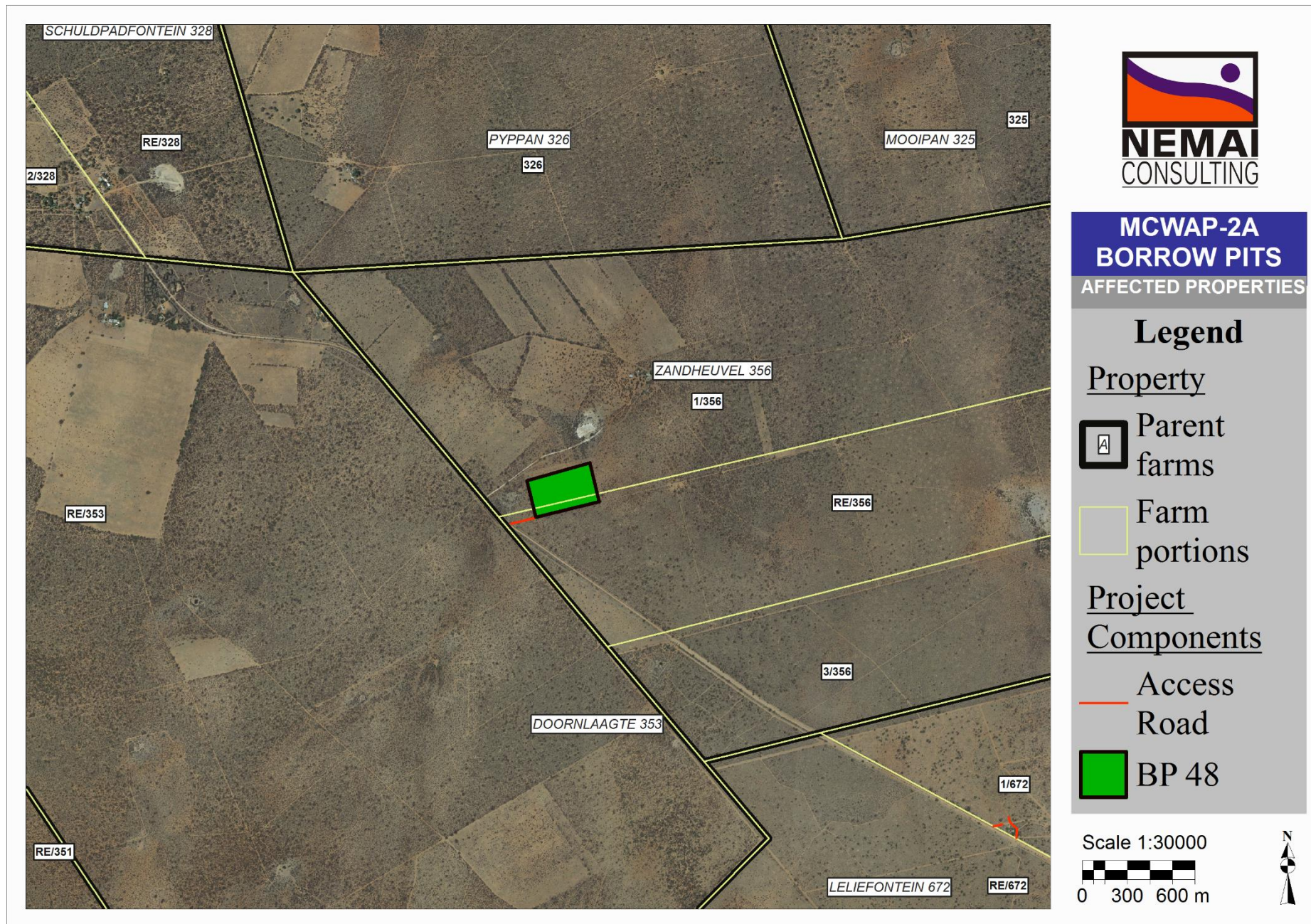


Figure 16: Properties that are directly affected by and adjacent to the proposed BP 48



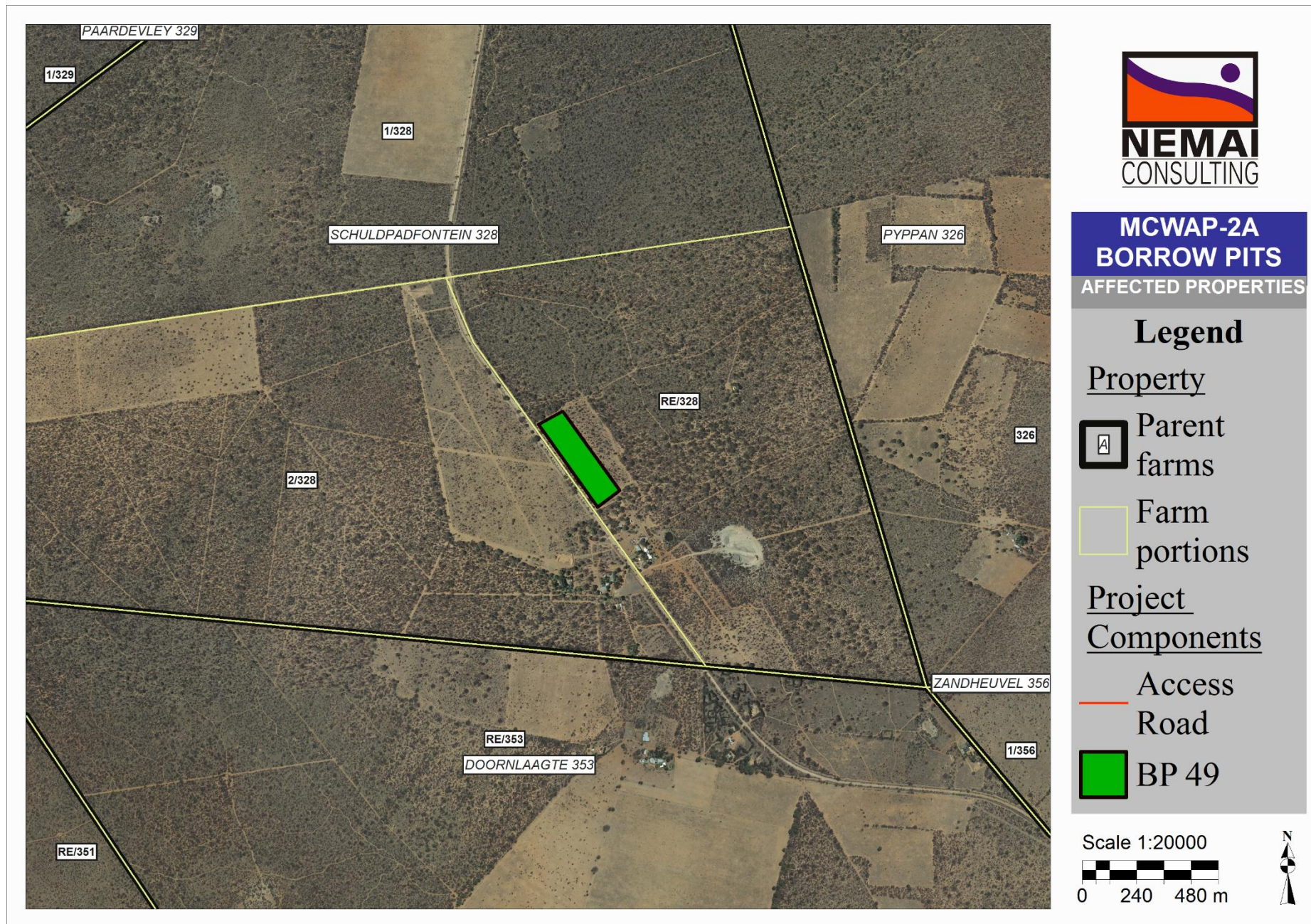


Figure 17: Properties that are directly affected by and adjacent to the proposed BP 49



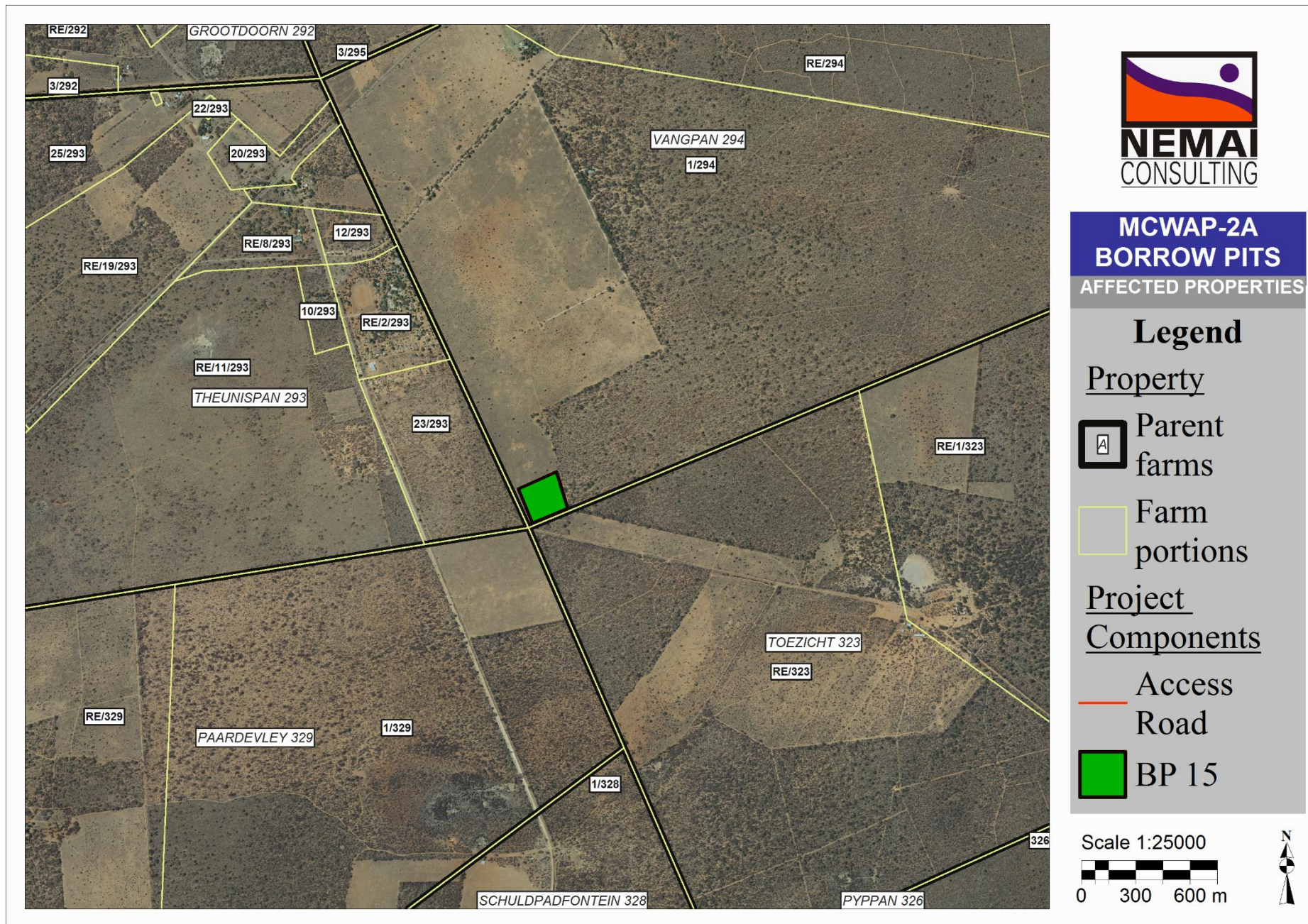
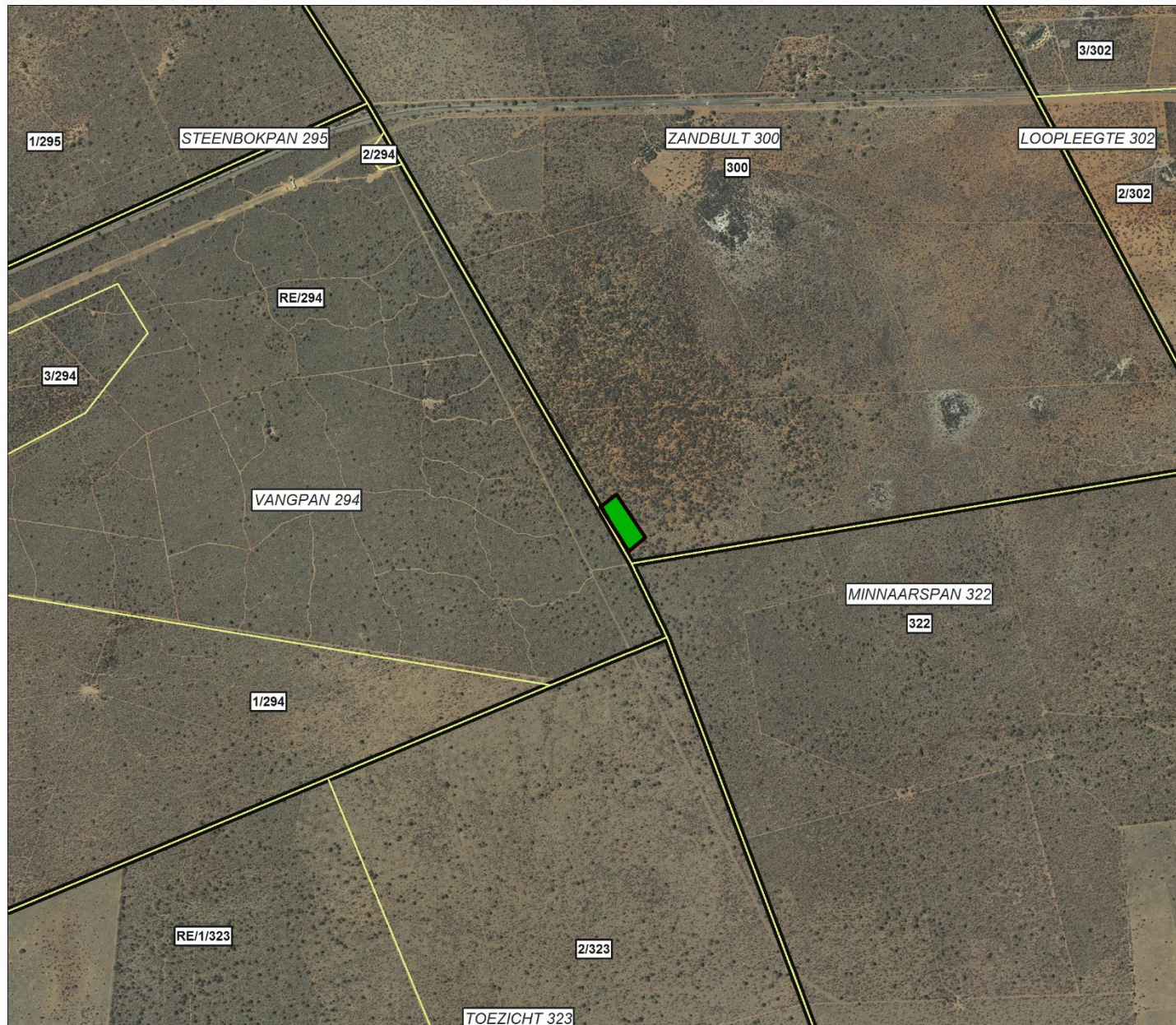


Figure 18: Properties that are directly affected by and adjacent to the proposed BP 15

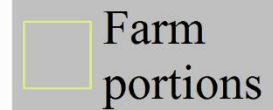




**MCWAP-2A  
BORROW PITS**  
AFFECTED PROPERTIES

**Legend**

Property



Project Components

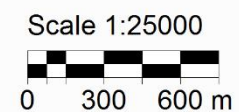


Figure 19: Properties that are directly affected by and adjacent to the proposed BP 46



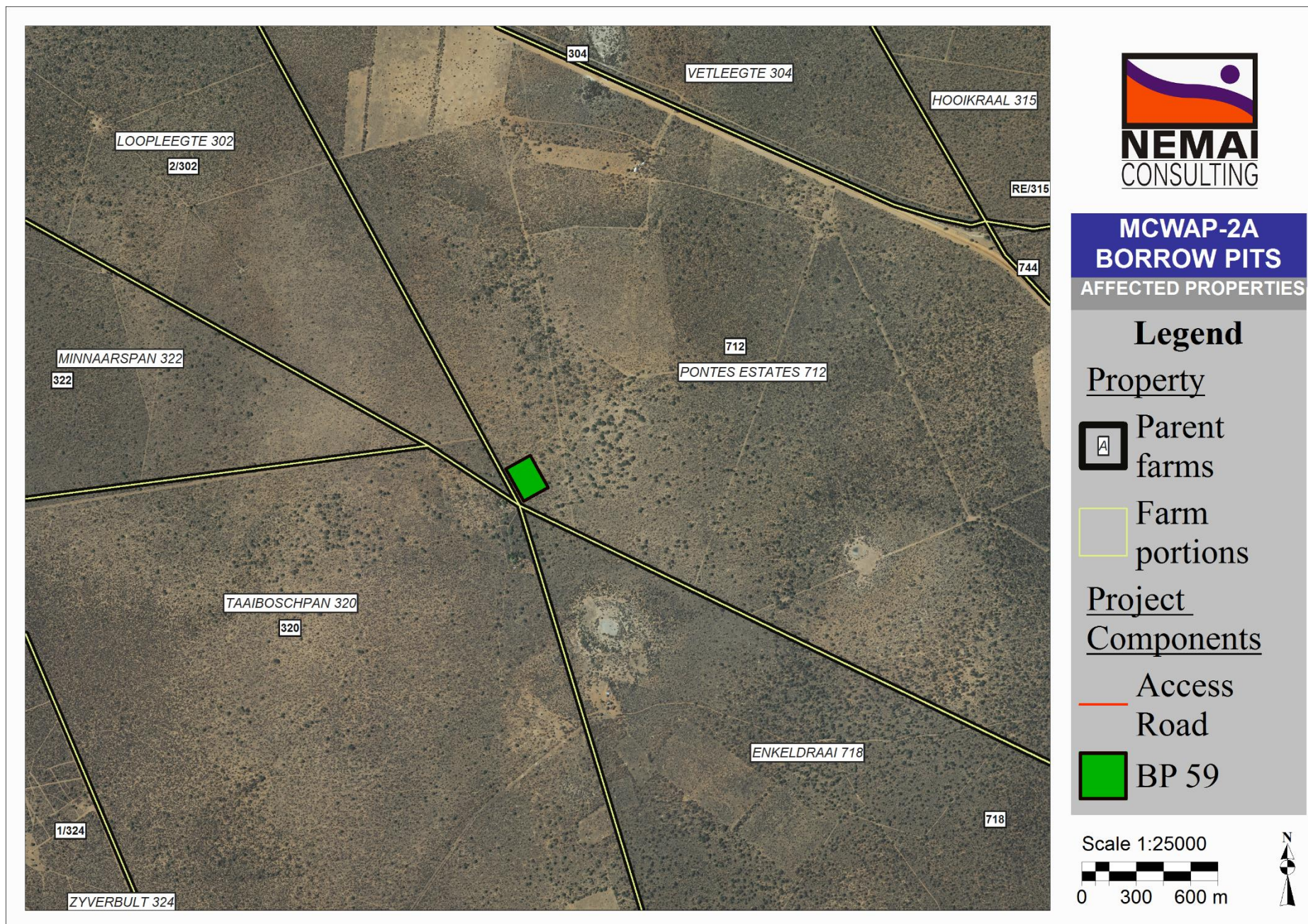


Figure 20: Properties that are directly affected by and adjacent to the proposed BP 59



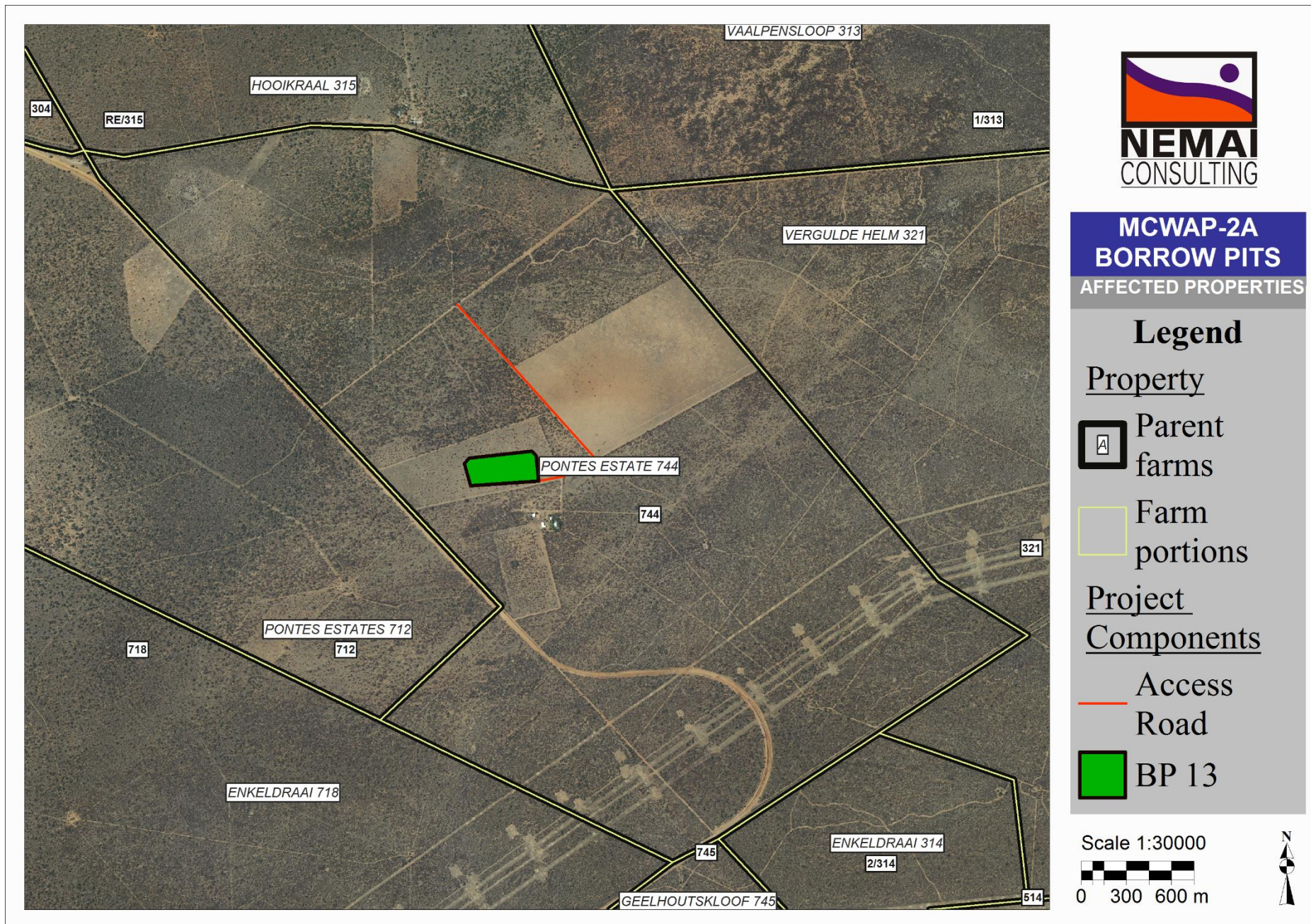


Figure 21: Properties that are directly affected by and adjacent to the proposed BP 13



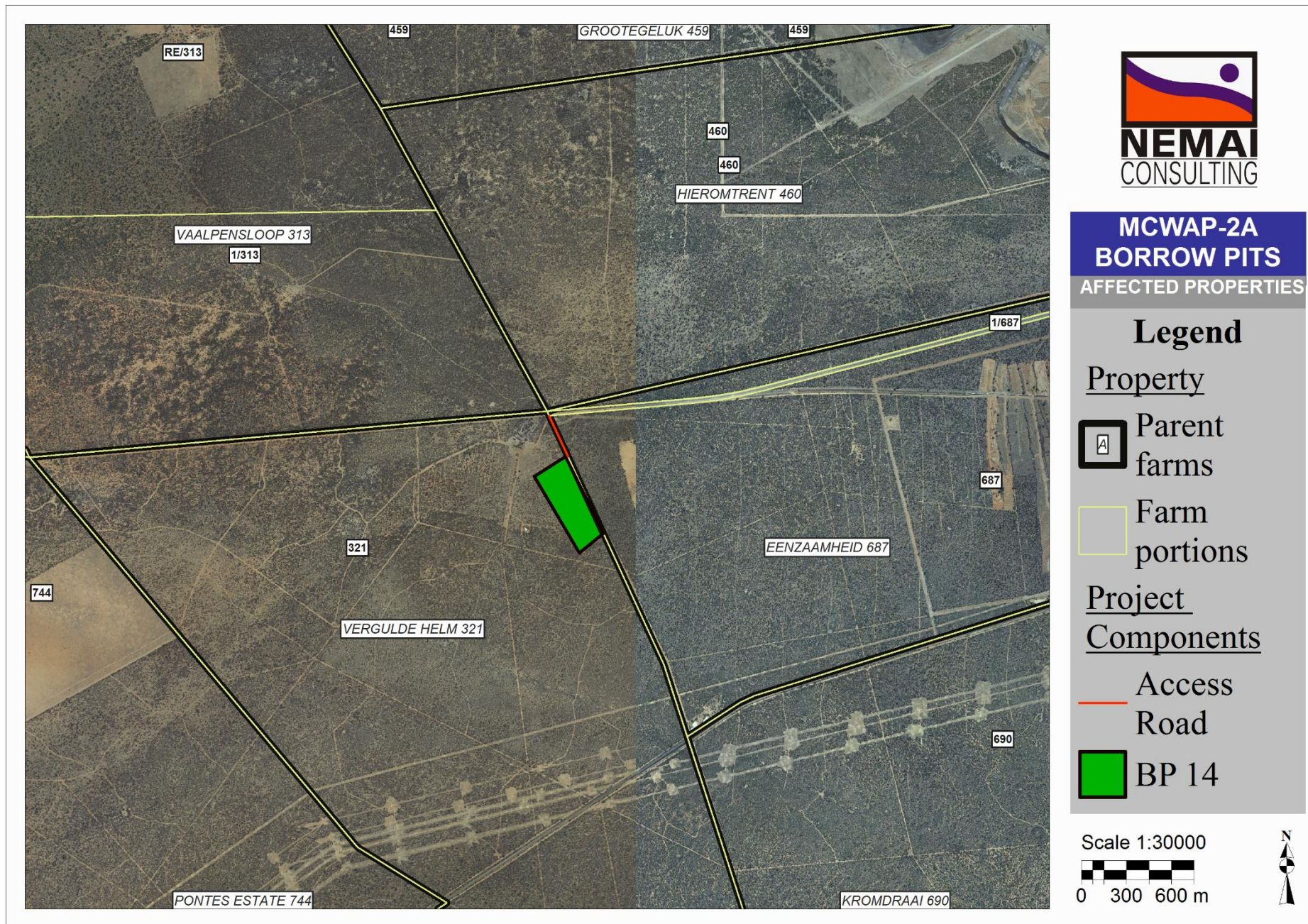


Figure 22: Properties that are directly affected by and adjacent to the proposed BP 14





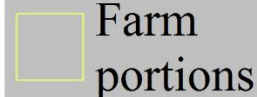
## MCWAP-2A BORROW PITS AFFECTED PROPERTIES

### Legend

#### Property



Parent  
farms



Farm  
portions

#### Project Components



Access  
Road



BP 51



Figure 23: Properties that are directly affected by and adjacent to the proposed BP 51