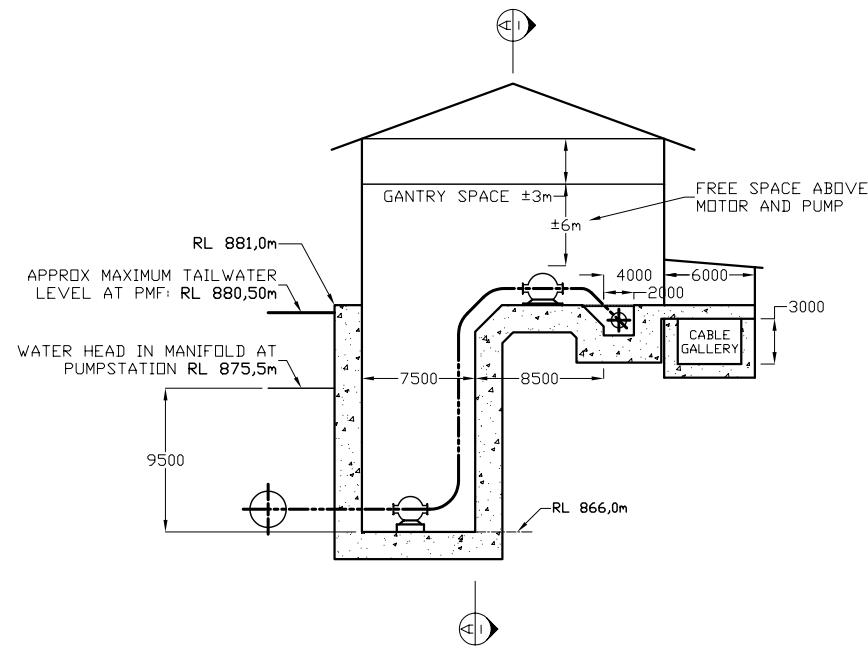
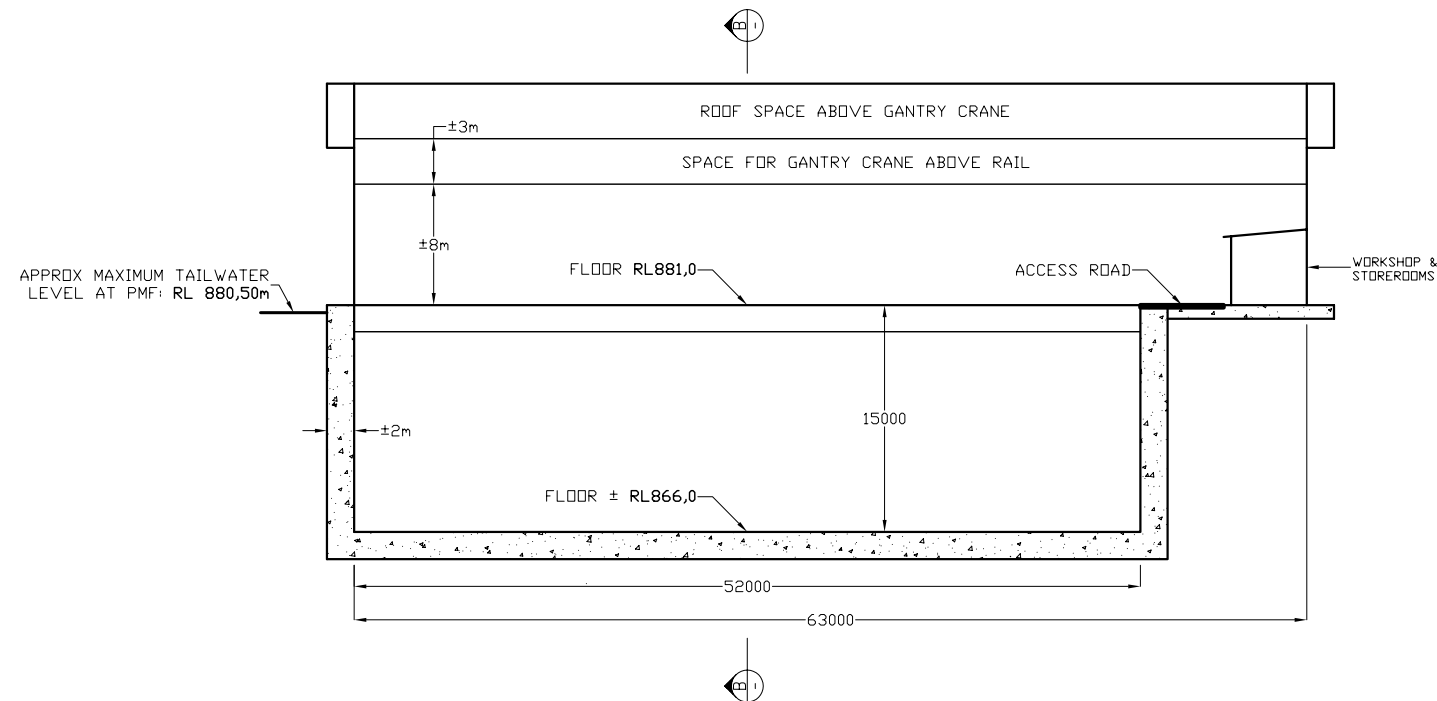


NOTES:

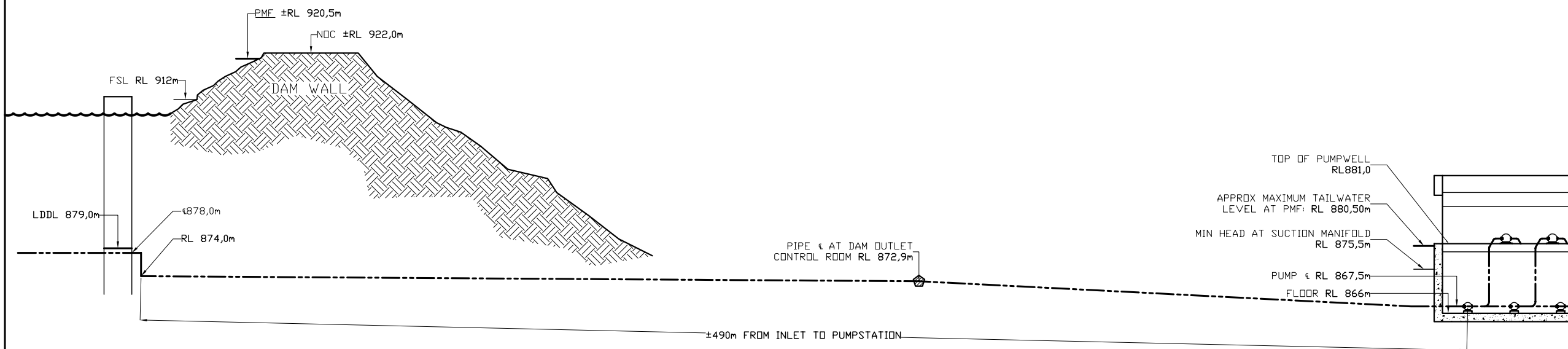


SECTION B - B
SCALE 1:500



SECTION A - A
SCALE 1:500

SECTIONS THROUGH NEW PUMP STATION



SECTION ALONG DELIVERY PIPE
TO NEW PUMP STATION PHASE 1A:

HYDRAULIC HEADS

SCALE 1:1000

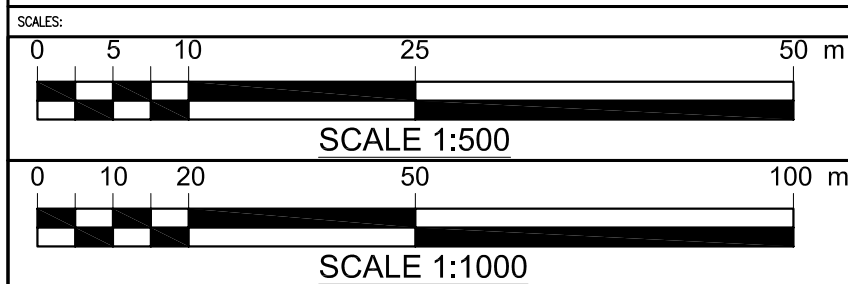
NOTES:

- LDDDL 879,0m (SEE DWG REG NO. 6075/75)
- SAFE LDDDL WITHOUT SUCKING
A VORTEX: ±RL 881,5m



Date: 11/08 Design: AB Draw: WVS Check: AB Appr:

SHEET	DESCRIPTION	OTHER No.	REG. No.
2 of 2	MOKOLO DAM PUMPSTATION CROSS SECTIONS		INSERT NO.



SETTING OUT POINTS:

LOCATION / NUMBER	Y	X	LEVEL (masl)

REVISION

MOD No.	DATE	DESCRIPTION	FOR	DWAF

DEPARTMENT OF WATER AFFAIRS AND FORESTRY

HEAD OFFICE
DIRECTORATE: OPTIONS ANALYSIS
PRIVATE BAG X313
PRETORIA 0001

P. YAKO
DIRECTOR GENERAL

DESIGN: _____ TRACED: _____
DRAWN: _____ CHECKED: _____
APPROVED: _____ ENGINEER: _____
SIGNATURE: _____ RANK: _____

CHIEF ENGINEER

DEPARTMENT OF WATER AFFAIRS AND FORESTRY
REPUBLIC OF SOUTH AFRICA

MOKOLO-CROCODILE WATER AUGMENTATION PROJECT

PROJECT: MOKOLO AND CROCODILE (WEST) WATER AUGMENTATION PROJECT (MCWAP) FEASIBILITY STUDY: TECHNICAL MODULE PROJECT WP 95285
DRAWING DESCRIPTION: MOKOLO DAM PUMPSTATION CROSS SECTIONS

PROVINCE: LIMPOPO DISTRICT: WATERBERG KEYCODES: _____ OTHER No. INSERT NO.

TENDER No. _____ CONTRACT No. WP9528 SHEET 2 of 2 REG. No. INSERT NO.

CALCULATION FILE: J4210/03/04 DIRECTOR