

APPENDIX B

DETAILS OF AFFECTED PROPERTIES & MAPS

MAPS OF AFFECTED PROPERTIES

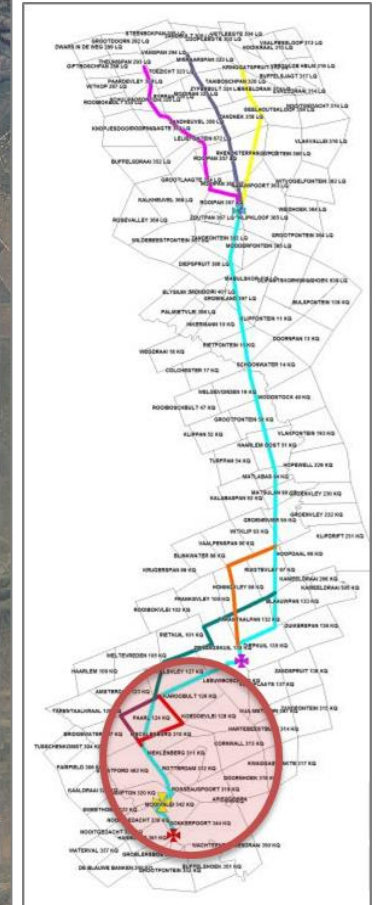
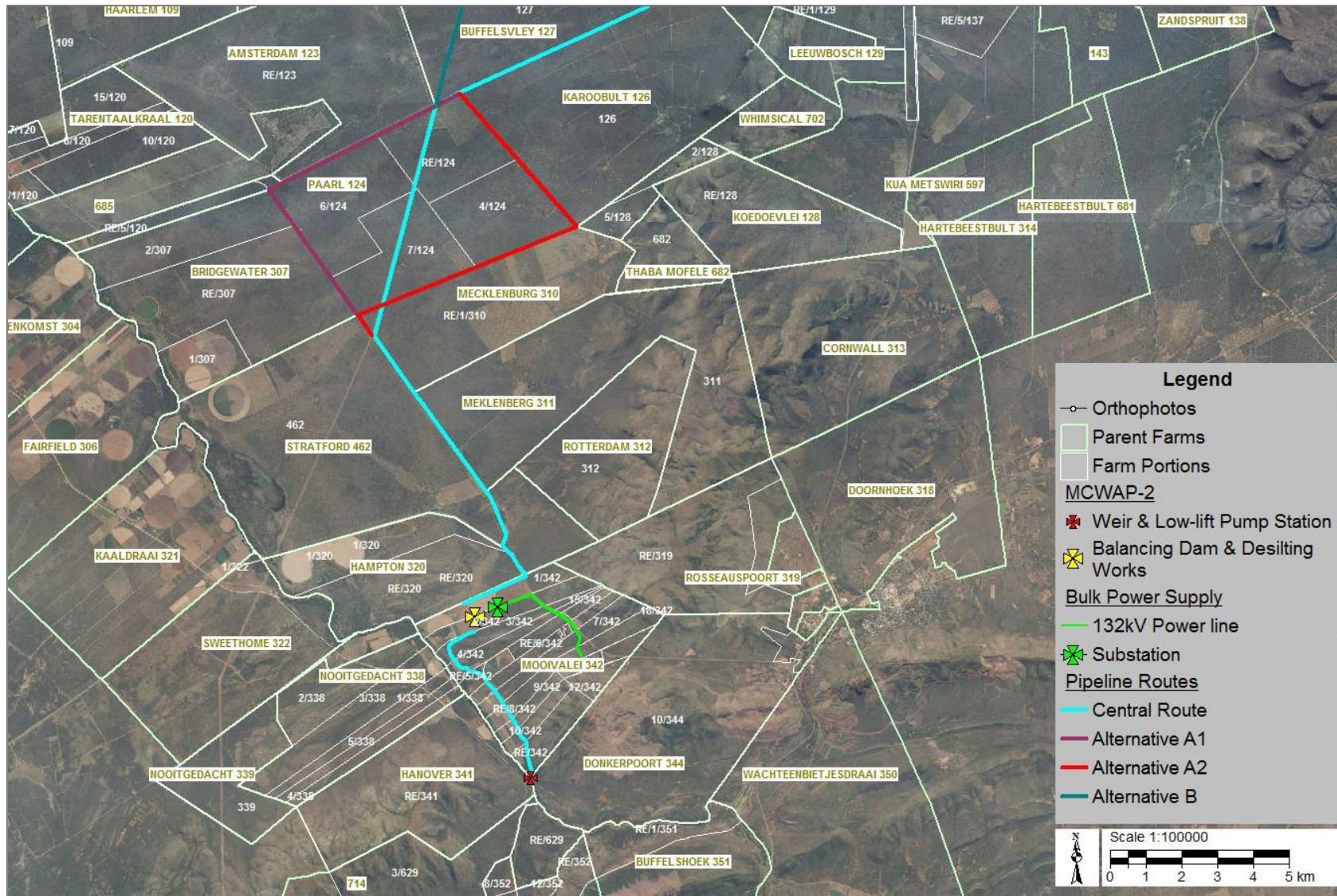


Figure B1: Map 1 of properties that are directly affected by and adjacent to the proposed development
(Note: A separate application will be submitted by Eskom to seek approval for the bulk power required for MCWAP-2A)



Figure B2: Map 2 of properties that are directly affected by and adjacent to the proposed development
(Note: Pipeline Route Alternative B was discarded)

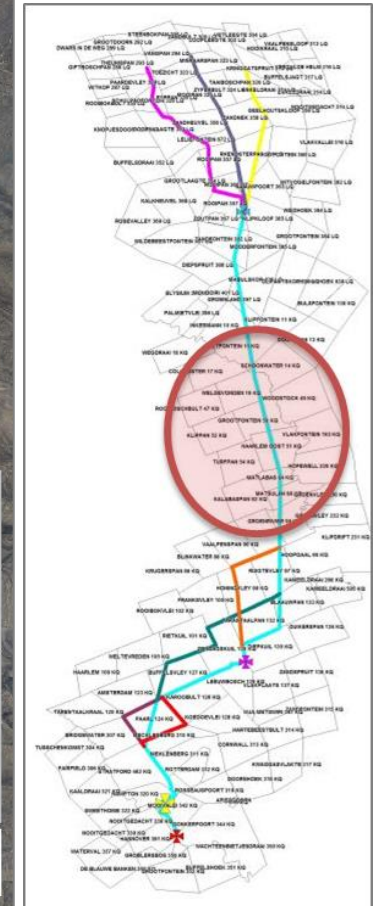


Figure B3: Map 3 of properties that are directly affected by and adjacent to the proposed development

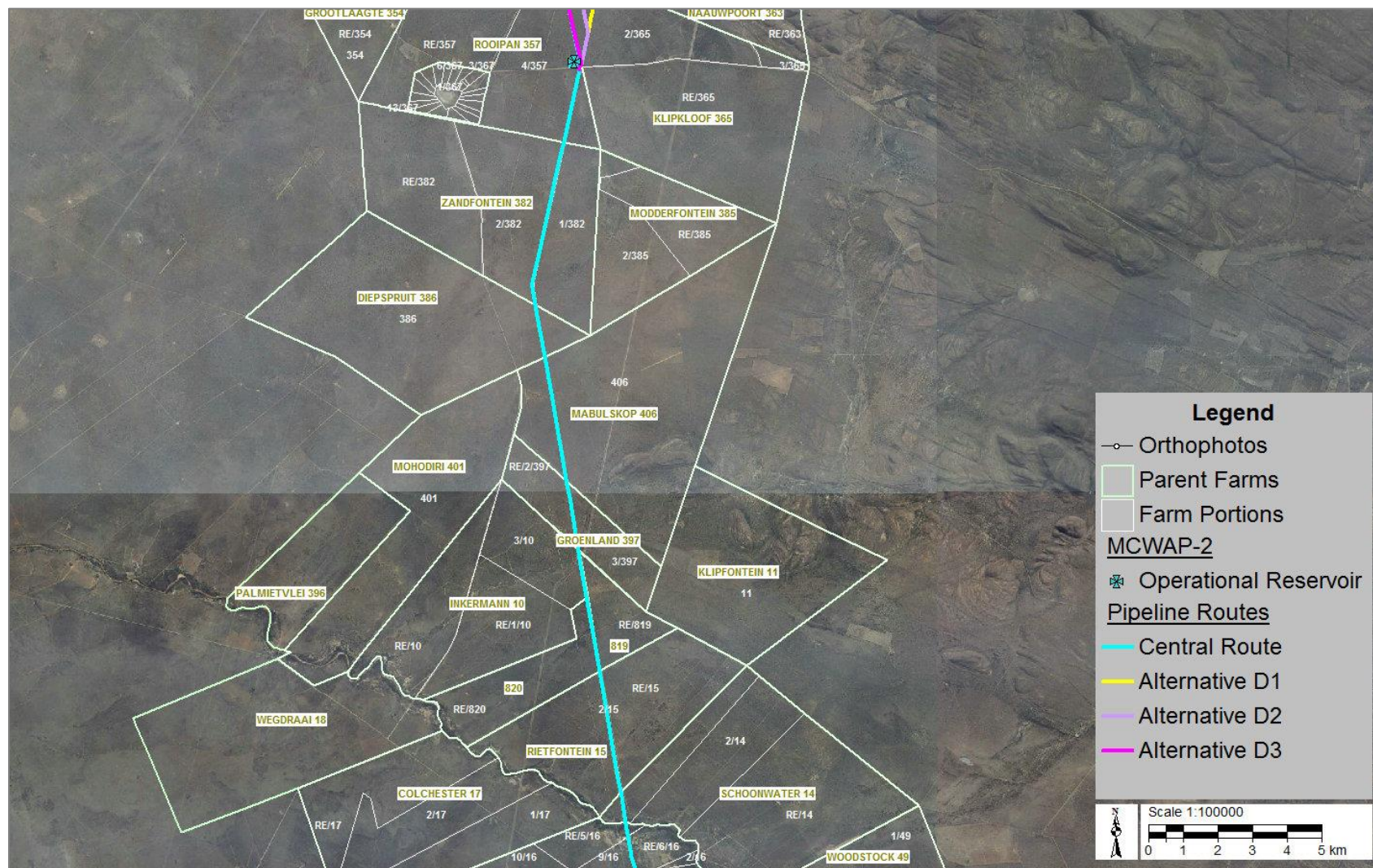


Figure B4: Map 4 of properties that are directly affected by and adjacent to the proposed development



B5



Figure B6: Map 6 of properties that are directly affected by and adjacent to the Bierspruit Gauging Weir

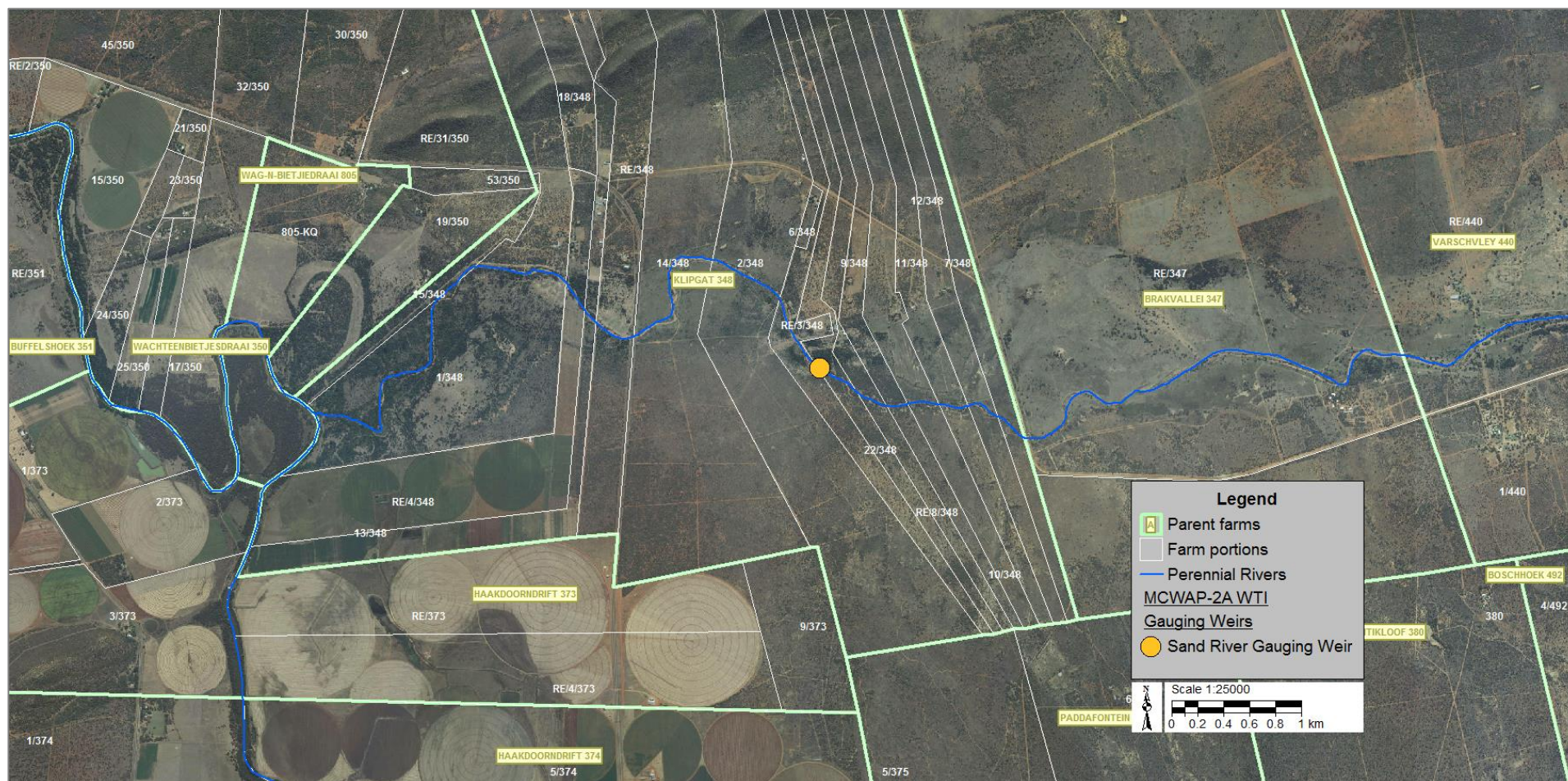


Figure B7: Map 7 of properties that are directly affected by and adjacent to the Sand River Gauging Weir



Figure B8: Map 8 of properties that are directly affected by and adjacent to the new Paul Hugo Gauging Weir