

CLASSIFICATION OF SIGNIFICANT WATER RESOURCES IN THE THREE VAAL WATER MANAGEMENT AREAS

Presentation Layout

- Purpose
- Legal Mandate
- Water Resource Classification System (WRCS)
- Implementation of WRCS in identified WMAs
- Current status in the Vaal WMA studies

PURPOSE

- To provide a broad overview of the WRCS
- Indicate how the Department will implement the WRCS

Contents and Effect of the Regulations for the Establishment of a Water Resource Classification System

Regulation 810 published in Government Gazette No 33541 dated 17 September 2010

LEGAL MANDATE

- The Regulations are in terms of **section 12(1) of the National Water Act, 1998 (Act 36 of 1998)**
- Regulations form **Part of Chapter 3 of the Act** that deals with Protection of Water Resources. This is in line with the spirit of the Act to protect a water resource related to its use, development, conservation, management and control
- Also **in line with the Constitution** to protect the environment

WRCS REGULATIONS

- Three classes:
 - **Class I - minimally used # configuration of ecological categories of that water resource minimally altered from its pre-development condition**
 - **Class II - moderately used # configuration of ecological categories of that water resource moderately altered from its pre-development condition**
 - **Class III - heavily used # configuration of ecological categories of that water resource significantly altered from its pre-development condition**

7-STEP PROCEDURE FOR DETERMINING CLASSES

- The procedure for determining different classes of water resources is a 7-step procedure (Methodology) and **MUST** be followed

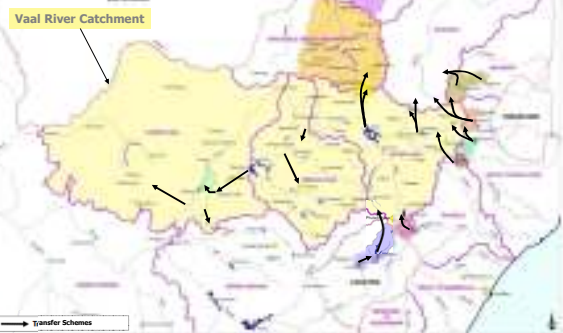
- Step 1:** Delineate the **units of analysis** and describe the status quo of the water resource(s)
- Step 2:** Link the socio-economic and ecological value and condition of the water resource(s)
- Step 3:** Quantify the **ecological water requirements** and changes in non-water quality **ecosystem goods, services and attributes**
- Step 4:** Determine an **ecologically sustainable base configuration scenario**
- Step 5:** Evaluate scenarios within the integrated water resource management process
- Step 6:** Evaluate the scenarios with **stakeholders**; and
- Step 7:** **Gazette and implement** the class configuration.

BACKGROUND TO WATER RESOURCE CLASSIFICATION STUDIES

- Classification studies initiated in 3 WMAs (October 2010)
- Vaal, Olifants, and Olifants/Doorn WMAs
- Main goal is to come up with the Management Class for relevant water resources
- Timeframe: 24 months
- Process to complement existing IWRM process (e.g. Reconciliation studies)

CLASSIFICATION OF SIGNIFICANT WATER RESOURCES IN THE THREE VAAL WATER MANAGEMENT AREAS (8, 9, 10)

Vaal River Catchment and Transfers

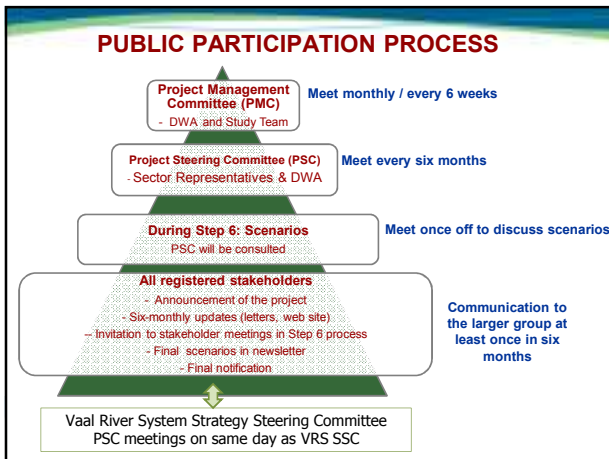


Study Tasks (Methodology)

- **Task 1: Project inception**
- Task 2: Water resource information and data gathering
- Task 3: Determination of the Management Class
- Task 4: Communication and liaison
- Task 5: Capacity Building (**ongoing**)
- Task 6: Study Management and co-ordination

CURRENT STATUS

- project announced in local newspapers
- PSC established
- PSC meeting held – 22/02/2011
- Inception Report finalised
- IUAs delineated



- ### Propose IAUs: Upper Vaal
- Upper Vaal (Grootdraai Dam)
 - Klip River (Free State)
 - Wilge River
 - Liebenbergvlei River
 - Waterval River
 - Vaal River Incremental (U/S and D/ Vaal Dam)
 - Blesbok/Suikerbosrand/Klip (GP) rivers
 - Mooi River / Loopspruit River

- ### Propose IAUs: Middle Vaal
- Schoonspruit River
 - Renoster River
 - Vals River
 - Sand River
 - Vet River
 - Lower Vet River
 - Vaal River Upstream of Bloemhof Dam

- ### Propose IAUs: Lower Vaal
- Upper Harts River
 - Middle Harts River
 - Dry Harts River (Tributary)
 - Lower Harts River
 - Molopo River
 - Vaal River Downstream of Bloemhof Dam

- ### Next Steps
- Technical Work
 - Detail evaluation and interpretation of information
 - Extrapolation, Socio-economic status for IAUs, Refinement of WRPM network
 - Formulate Multi-Criteria Decision Aid system
 - Social, Economic, Ecological criteria
 - Integration with Reconciliation Strategy Maintenance Study

THANK YOU!!!