



**UVavanyo lweMpembelelo kokusiNgqongileyo (DEA Reference: Idami lamanzi: 14/12/16/3/3/2/677, Umbane: 14/12/16/3/3/2/678, ne limigaqo: 14/12/16/3/3/1/1169)**

**kulwakhiwo olukhoyo leSebe Lemicimbi Yamanzi**

**IProjekthi Yamanzi yaseMzimvubu**

**UXWEBHU OLUQULETHE ULWAZI LWANGAPHAMBILI (BID)**

**Isimemo sokubhalisa kunye nokungenisa izimvo, 23 April 2014 - Uxwebhu Lokuqala lokuba kungeniswe izimvo**

#### INJONGO YOLU XWEBHU

Injongo yolu xwebhu kukunika amaqela achaphazelekayo ithuba lokuba abhalise njengamaqela anomdla nabandakanyekayo (I&APs) kuVavanyo Lwempembelelo KokusiNgqongileyo (EIA) kwanokufumana izimvo zawo zokuqala kwaneziphakamiso zawo ngokuphathelele kwiProjekthi Yamanzi yaseMzimvubu ecetywayo nekwindawo Elidama Lamanzi Emvula kuMlambo waseTsitsa, kwiPhondo laseMpuma Koloni.

Amaqela anomdla nabandakanyekayo angabhalisa ngokuthi agcwalise ifomu yokubhalisa ehamba nolu xwebhu, ngokubhala ileta, ngokutsala umnxeba, ngokuthumela ifeksi okanye i-imeyile ku-ILISO aze acele ukuba afakwe kuluhlu lwababhalisileyo. Onke amaxwebhu aya kufumaneka ukuze akwazi ukuphicothwa ajongiswe kwindawo yasekuhlaleni okanye afumaneka kwiwebhusayithi (at <http://www.dwaf.gov.za/projects.aspx>). Amaqela achaphazelekayo aya kwaziswa xa sele efumaneka amaxwebhu kwanendawo afumaneka kuyo ukwenzela abo bafuna ukungenisa izimvo.

**IQela Eliququzela Ukuthatha Inxaxheba koLuntu**  
Kim Dalhuijsen okanye uJoseph Masilela  
**ILISO Consulting (Pty) Ltd**  
PO Box 68735,  
Highveld,  
Centurion  
0169



Umnxeba: (012) 685 0900  
Ifeksi: (012) 665 1886  
I-imeyile: [Kim.d@iliso.com](mailto:Kim.d@iliso.com)  
[Joseph.m@iliso.com](mailto:Joseph.m@iliso.com)

#### ULWAZI LWANGAPHAMBILI NGOKUNXULUMENE NEPROJEKTHI

**UMlambo uMzimvubu ngowona umkhulu onguvimba wamanzi engaphuhlisiwanga ngokupheleleyo eMzantsi Afrika kwaye iinzuzo ezinokuthi zifumaneke ngokusetyenziswa kwalo mlambo zinokuthi zibe luncedo kwilizwe ngokubanzi.**

Idama lamanzi emvula kuMlambo uMzimvubu kwiPhondo laseMpuma Koloni eMzantsi Afrika lingaphakathi kwenye yezona ndawo zihluphekileyo kwakunye neyona mimandla ingaphuhlisiwanga emzantsi Afrika. Ngoko ke uphuhliso lwale ndawo ukuze kukhawulezise inkqubo yokuphakamisa umgangatho wemeko yezentlalo nezoqoqosho kubantu bakhona lwathi lachongwa njengelinye lamaphulo abalulekileyo naphambili kuRhulumente wePhondo laseMpuma Koloni.

Ulawulo kunye nokusetyenziswa kwezibonelelo zamanzi oMlambo uMzimvubu, nekuphela kowona mlambo mkhulu elizweni ongasetyenziswa ngokupheleleyo, kubonwa nguRhulumente njengokunikezela ngelinye lawona mathuba angcono kwiPhondo ukuphumeza olo phuhliso. Ngoko ke iSebe leMicimbi Yamanzi (DWA) liqalise le Projekthi Yamanzi yaseMzimvubu ngenjongo yokuphuhlisa isibonelelo sovimba wamanzi esinamadama aneenjongo ezimbini ukuze kuzuze iindawo zokuhlala ezilapho kulo ndawo kwanokuvuselela uqoqosho lwalo mmandla, ngokuphathelele kunikezelo ngamanzi ezindlini, unkcenkceshelo, kwakunye noveliso lombane ngamandla emvula, phakathi kwezinye izinto.

Kwaqala kwenziwa uphononongo lokuqala, kwaze ngo-Agasti 2013 isiza saseNtabelanga kuMlambo iTsitsa saqinisekiswa njengesona singcono nesilungileyo ngokubhekiselele kunikezelo ngamanzi ezindlini kunye nonkcenkceshelo, kwakunye nesilungileyo ngokuphathelele kuphuhliso lommandla lo. Kananjalo olu phononongo lwabonisa ukuba ukuphumelela kweprojekthi kuya kuba ngcono kakhulu xa isungulwe ndawonye nesibonelelo soveliso lombane ngamandla emvula, nenethuba eliphezulu lokuphucula impumelelo yeprojekthi ngokwezoqoqosho. Idama elikwisiza saseLaleni, esasichongwe ngexesha elingaphambili yinkampani yakwa-Eskom, nalo elikuMlambo iTsitsa, emantla kwiiNgxangxasi zaseTsitsa, labonwa njengelona liya kululungela uveliso lombane ngamandla emvula.

Uphando olubanzi ngokunxulumene nocwangciso ngokuphathelele kwisiza saseNtabelanga nesaseLaleni (**Umboniso 1**) sele lugqityiwe, ngaphandle kokugqityezelwa koveliso lombane ngamandla emvula okusaqhubekayo. Inkqubo yoVavanyo lweMpembelelo kokusiNgqongileyo (EIA) akukudalanga iqaliwe kwaye kulindeleke ukuba igqitywe ekuqalekeni kuka-2015. Kuza kudingeka iSigunyaziso Ngokusingqongileyo kulwakhiwo olukhoyo olwahlukeneyo lwale projekthi, kuquka amadama, iindonga ezilawula amanzi emilanjani, ukuphuculwa nokumiswa ngokutsha kweendlela, imibhobho yonikezelelo lwamanzi asezindlini kunye namachibi, imibhobho yamanzi angalungiswanga, iindawo zokumpompa amanzi, indawo yoveliso lombane ngamandla emvula, iMisebenzi Yokucoca Amanzi, iMisebenzi Yokucoca Inkunkuma Emanzini neentambo zombane.



**ENVIRONMENTAL IMPACT ASSESSMENT  
FOR THE INFRASTRUCTURE  
COMPONENTS OF THE MZIBVUBU WATER  
PROJECT**

**NTABELANGA CONJUNCTIVE SCHEME**

**LOCALITY MAP**

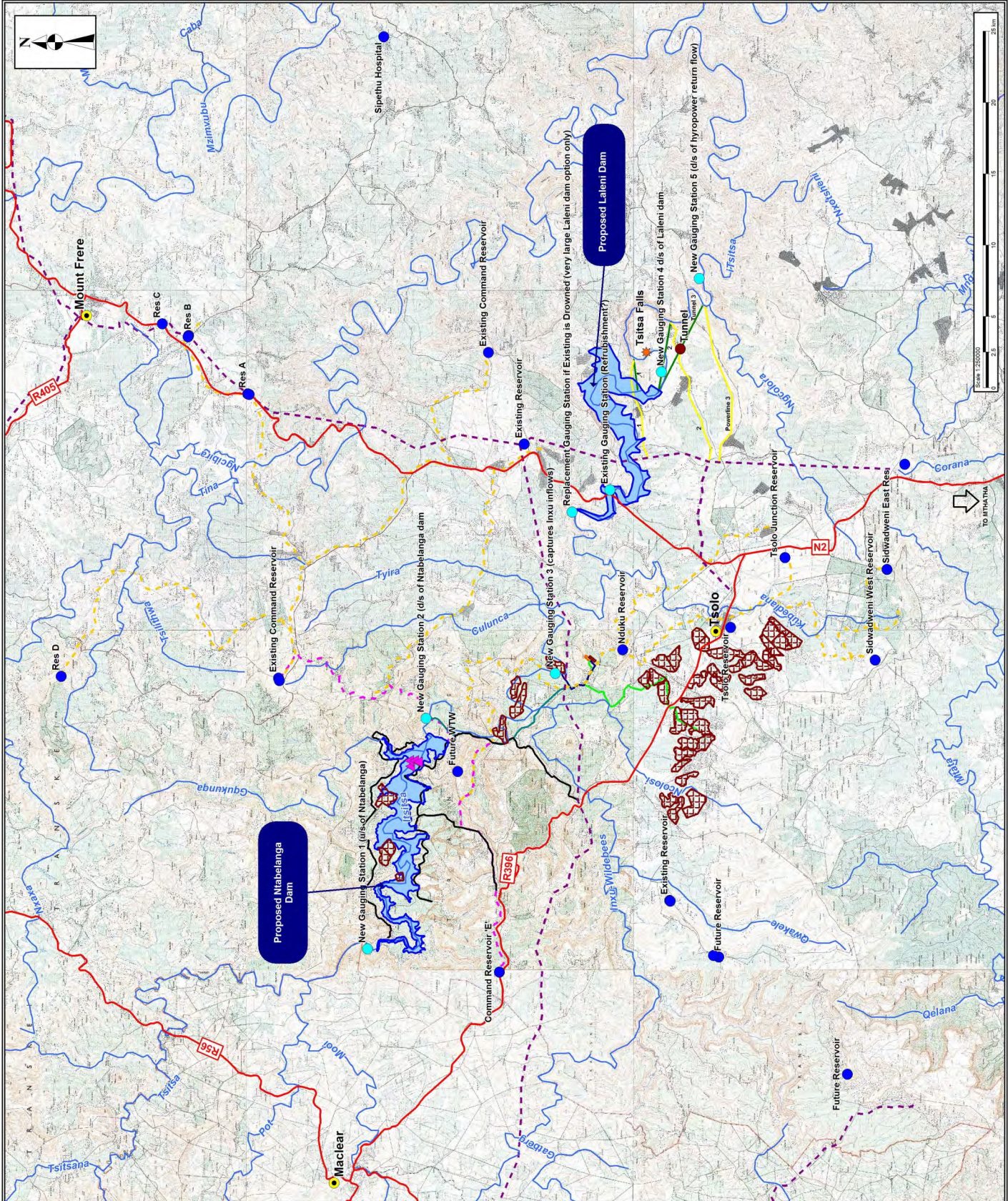
- Legend**
- Intermediate Raw Water Storage
  - Tunnels
  - Main Irrigation Gravity Line
  - Power Transmission Lines
  - Primary Lines
  - Raw Water Pumping Main 3
  - From Dam
  - Raw Water Pumping Main 4
  - From River
  - Access Roads to be Upgraded
  - Existing Powerlines
  - Proposed Dams
  - Irrigation Areas
  - Reservoirs
  - Gauging Stations
  - Main Roads
  - Secondary Lines
  - Telisa Falls
  - Towns
  - Borrow PH Areas
  - Rivers



DATE: 3 APRIL 2014

SYSTEM: HARTEBEEHOEK94

MAP BY: NDOMUPEI DHEMBA



Umboniso 1– Ubonisa indawo enedama iNtabelanga, idama iLaleni kunye nemihlaba enkcenkeshelwayo aza kunikezelwa kuyo amazi edami eli.



## INKCAZELO NGENDAWO YEPROJEKTHI

Idama Lamanzi Emvula kuMlambo iTsitsa likwiPhondo laseMpuma Koloni eMzantsi Afrika.

Umda weprojekthi uthatha iMimandla yooMasipala emithathu eyile, uMmandla kaMasipala i-Joe Gqabi oya ngasemntlantshona, uMmandla kaMasipala i-OR Tambo oya ngasemazantsi-ntshona kunye noMmandla kaMasipala i-Alfred Nzo osepuma nasemntla-mpuma. IDama laseNtabelanga kucetywa ukuba linikezele ngamanzi okuselwa kubantu abamalunga ne-539 000, nabaza konyuka babe yi-726 000 ngonyaka ka-2050. Inxenywe enkulu yezibonelelo zonikezelo ngamanzi okusela kule ndawo iza kuba ngaphantsi koMmandla kaMasipala i-OR Tambo kunye ne-Joe Gqabi, kwakunye neendawo ezincinci ezingaphantsi koMmandla kaMasipala i-Alfred Nzo.

Ngaphezu koko, uphononongo olwenziweyo luchonge iihektare eziyi-2 868 zomhlaba ongalulungela kakhulu ulimo olunkcencshelwayo (**Umboniso 1**). Malunga nehektare eziyi-2 450 zomhlaba zikwindawo yakuTsolo zize ezinye zibe kufutshane nedama kwanangasemlanjeni. Umhlaba wolimo uza kunikezelwa kunye namanzi angacocwanga ampontshwa ukusuka kwiDama laseNtabelanga kuze kwezinye iindawo amanzi ampontshwe ngemibhobho ukusuka kwindawo yotsalo kumlambo okufutshane kuMlambo iTsitsa, emazantsi kwedama.



Umboniso 2– iifoto ezithathiweyo zeziza ezicetywayo ngoMatshi 2014 a) isiza esicetywayo seDama iNtabelanga; b) indawo yodonga ecetywayo yeDama iLaleni; kunye c) neeNgxangxasi zaseTsitsa.

### INJONGO YEPROJEKTHI

IProjekthi Yamanzi yaseMzimvubu yiProjekthi Ehlangeneyo yeQhinga-nkqubo (iprojekthi i-SIP3). Eyona njongo iphambili yeProjekthi kukuphucula umgangatho wezentlalo noqoqosho kwiindawo zokuhlala ezingaphuhlisiwanga nezihluphekayo kwingingai yoMlambo uMzimvubu.

Ukuphuculwa komgangatho wezentlalo noqoqosho kulindeleke ukuba kuphunyezwe ngezi ndlela zilandelayo:

- Izibonelelo zonikezelo kwiimfuno zamanzi asezingqondweni nakwiindawo zoshishino;
- Izibonelelo zonikezelo zolimo lonkencshelwo;
- Uveliso lombane ngamandla emvula;
- Ukwakhiwa kwemisebenzi yethutyana nesisigxina; kunye
- Nokuqinisekiswa kweenzuzo.



### UVELISO LOMBANE NGAMANDLA EMVULA

Omabini amaDama, elaseNtabelanga nelaseLaleni, azakuba nendawo zoveliso lombane. Esona sibonelelo sikhulu soveliso lombane ngamandla emvula siza kwakhiwa kwiDama iLaleni. Umbane oveliswa zezi zibonelelo uza kufakwa kwigradi kwazwelonke.

### Yintoni uVavanyo lweMpembelelo kokusiNgqongileyo?

UVavanyo lweMpembelelo kokusiNgqongileyo yindlela elungileyo yokucwangcisa kwanokwenza izigqibo. Lukhangela iziphumo ezingezihlanga kwakunye nezihle ezinokuthi zibekho ngokunxulumene neprojekthi ecetywayo okanye uphuhliso oluthile kwakwinqanaba elisekuqaleni, luze lwenze iingcebiso malunga neendlela zokuphucula impembelelo efanelekileyo nelungileyo ngelixa kuthintelwa, kusehliswa okanye kunqandwa impembelelo engamkelekanga nengentlanga. Kananjalo iziphumo zoVavanyo lweMpembelelo kokusiNgqongileyo ziza kukhokhelela ekubeni kukwazi ukwenziwa olunye uphando kwanezigqibo ezinxulumene nezobugcisa. UVavanyo lweMpembelelo kokusiNgqongileyo lwenziwa ngokusekelwe kwicandelo 24C loMthetho woLawulo lokusiNgqongileyo kaZwelonke (NEMA), uMthetho onguNombolo 107 ka-1998.

Ukuthatha inxaxheba koluntu ngumba obalulekileyo kulo naluphi na uVavanyo lweMpembelelo kokusiNgqongileyo, ngenjongo yokuncedisa amaqela achaphazelekayo ukuba akwazi ukuphakamisa imiba ewaxhalabisayo, angenise iingcebiso ukuphucula iinzuzo kwanokuvakalisa izimvo zawo ngokunxulumene neziphumo zoVavanyo lweMpembelelo kokusiNgqongileyo. INkqubo Yokuthatha Inxaxheba koLuntu yenziwe ngendlela yokuba inikezele ngolwazi futhi iqinisekise ukufumaneka kwalo kumaQela Anomdla Nabandakanyekayo (I&APs) ngendlela engakhethi cala, ukuwanceda ukuba akwazi:

- Ukuphakamisa imiba ewaxhalabisayo kwanokwenza iingcebiso ngezinye iindlela zokwenza izinto kwaneenzuzo ezingcono;
- Ukwenza igalelo kulwazi lwasekuhlaleni;
- Ukuqinisekisa ukuba imiba ishicilelwe ngendlela eyiyo na kwaye yaqwalaselwa xa kusenziwa uphando lezobugcisa; kunye
- Nokuvakalisa izimvo ngokuphathelele kwiziphumo zoVavanyo lweMpembelelo kokusiNgqongileyo.

Ngaphezu koko, iMimiselo yoVavanyo lweMpembelelo kokusiNgqongileyo idinga ukuba kuqulunqwe iNkqubo yoLawulo lokusiNgqongileyo (EMP) ukuze kukwazi ukuchazwa ukwenziwa nokuphunyezwa kweengcebiso zokukhuselwa kokusingqongileyo ezenziwe ngelixa loVavanyo lweMpembelelo kokusiNgqongileyo, ukulungiselela isigaba sokwakha kunye nesokusebenza. Imimiselo yeNkqubo yoLawulo lokusiNgqongileyo iza kuba yebophelelayo ngokwasemthethweni kwiSebe Lemcimbi Yamanzi kwakunye neKhontraktha zalo.

### Inkqubo yoVavanyo lweMpembelelo kokusiNgqongileyo. Iquka ntoni?

ISebe Lemcimbi Yamanzi, uRhulumente wePhondo, amanye amagunya awohlukeneyo, iingcaphephe zezobugcisa nezokusingqongileyo kwakunye namaqela achaphazelekayo bonke baya kusebenza ndawonye kwinkqubo yoVavanyo lweMpembelelo kokusiNgqongileyo. UVavanyo lweMpembelelo kokusiNgqongileyo luquka izigaba ezibini, iSigaba Sokuhlela Umsebenzi kunye neSigaba soVavanyo lweMpembelelo kokusiNgqongileyo. Ezi zigaba ziza kuquka:

- Ukubonisana kwasekuqaleni kunye namaqela achaphazelekayo abanzi nawohlukeneyo, abanikazi bomhlaba kwakunye nabahlali abakummandla weziza zamadama kunye nezakhiwo ngezibonelelo zolonikezelo nohambiso lwamanzi amaninzi;
- Ukubonisana ngezobugcisa kunye neengcaphephe kwindawo leyo;
- Ukubonisana kunye nabasemagunyeni kwiphondo, ekuhlaleni nasebukhosini malunga namaqhinga-nkqubo ocwangciso nophuhliso oluhlangeneyo;
- Uvavanyo olwenziwa ziingcaphephe ezahlukeneyo kwiSigaba soVavanyo lweMpembelelo ukukhangela nokuvavanya ifuthe engathi ibenalo iprojekthi le;
- Izimvo zabasemagunyeni kwanezo zamaqela achaphazelekayo kwisigaba ngasinye senkqubo yoVavanyo lweMpembelelo kokusiNgqongileyo; kunye
- Nokuthathwa kwanokwenziwa kwezigqibo ngabasemagunyeni.

### IINDAWO ZEMBOLEKO

Ngokwemimiselo yoMthetho Wophuhliso Lwezibonelelo zeziMbiwa nePetroliyam, ka-2002 (uMthetho onguNombolo 28 ka-2002) (MPRDA), njengoko ulungisiwe, kwakunye neMimiselo Yophuhliso Lwezibonelelo zeziMbiwa nePetroliyam ekwisaziso sikarhulumente esingunombolo GNR 527 somhla we-23 ku-Epreli 2004, iSebe Lemcimbi Yamanzi (DWA), ngenxa yesaziso sikarhulumente esingunombolo GNR . 762 somhla we-25 kuJuni 2004, alizidingi iinkqubo zofako lwesicelo kwakunye nokwamkelwa kwamalungelo okanye iimvume ngokwamacandelo u-16, 20, 22, kunye no-27 oMthetho i-MPRDA. Nangona kunjalo ke kodwa, ngokwecandelo 106(2) loMthetho i-MPRDA, iSebe Lemcimbi Yamanzi kudingeka ukuba liqulunqe iNkqubo yoLawulo lokusiNgqongileyo (EMP) ukuze yamkelwe ngokwemimiselo yecandelo 39 (4) lalo Mthetho.

## ISICELO SEMVUME YOKUSETYENZISWA KWAMANZI (WULA)

Ngaxeshanye ngethuba lophando loVavanyo lweMpembelelo kokusiNgqongileyo kwenzeka inkqubo yokufumana imvume yokusetyenziswa kwamanzi. Iprojekthi le ithi ikhokhelele ekuqaleni kwemisebenzi ethile ngokwecandelo 21 loMthetho kaZwelonke Wamanzi (NWA) uMthetho onguNombolo 36 ka-1998; (a) ukuthathwa kwamanzi emlanjeni; (b) ukugcinwa kwamanzi; (c) ukuphazamisa okanye ukujika indlela yokuhamba kwamanzi emlanjeni; (i) ukutshintsha isiseko, iindonga, umjelo okanye naziphi na iimpawu zomlambo. Kananjalo indawo ecetywayo yokucocwa kwamanzi iya kukhokhelela (f) ekukhutshweni kwenkunkuma okanye amanzi anenkunkuma aye kuvimba wamanzi ngombhobho, imijelo, imijelo engaphantsi komhlaba ehambisa amanzi amdaka, okanye enye indlela yohambiso. kunye Necandelo 21 (g) ukulahlwa kwenkunkuma ngendlela enokuthi ibe negalelo elingelihlanga kwindawo yamanzi.

## INKQUBO YOKUTHATHWA KWENXAXHEBA LULUNTU

Inkqubo yokuthathwa kwenxaxheba luluntu iza kuqhutywa yi-ILISO Consulting (Pty) Ltd ngokweSahluko sesi-6 seMimiselo ye-EIA, ka-2010, njengoko ilungisiwe.

Ukuqinisekisa ukuba izinto ezikuxhalabisayo ziyaqwalaselwa ngexesha lenkqubo loVavanyo lweMpembelelo kokusiNgqongileyo uyamenywa ukuba ubhalise njengeQela Elinomdla Nelibandakanyekayo (I&AP) ngokuthi ugcwalise le fomu yokubhalisa ihamba nolu xwebhu uze uyingenise kuNkoszn Kim Dalhuijsen (iinkcukacha zinikeziwe apha ngezantsi) zingekapheli iintsuku ezili-14 emva kokuba ulufumene olu Xwebhu Luqulethe Ulwazi Lwangaqambili (BID). Izaziso malunga neentlanganiso kwakunye namaxwebhu akhoyo ekumele kungeniswe izimvo ngawo aza kuthunyelwa kuwo onke amaQela anomdla, nabandakanyekayo nabhalisileyo.

Njengexalenye yenkqubo yoVavanyo lweMpembelelo kokusiNgqongileyo enezigaba ezibini, kuza kuqulunqwa iNgxelo Yokuhlela Umsebenzi ize ifumaneka kuwo onke amaQela Anomdla Nabandakanyekayo ngexesha lokungeniswa kwezimvo luluntu. Yonke imiba ephakanyisiweyo kwakunye nezimvo ezingenisweyo ngeli xesha lokuthathwa kwenxaxheba luluntu iza kushicilelwa kwiNgxelo Yemiba Neempendulo (IRR) ize ifakwe ibe yinxalenye yeNgxelo Yokuhlela Umsebenzi yokugqibela. Ifomu yeNgxelo Yemiba Neempendulo iza kuba sisihlomelo kwiNgxelo Yokuhlela Umsebenzi yokugqibela eza kungeniswa kwiSebe Lemicimbi Yokusingqongileyo (DEA) ukuze yamkelwe ize ifumaneka ngexesha elongezelelweyo lokungeniswa kwezimvo zoluntu.

## IINKCUKACHA ZONXIBELELWANO



203 Witch-hazel Avenue, Highveld Technopark, Centurion 0169  
PO Box 68735, Highveld, Centurion, 0159

**Kim Dalhuijsen**  
Umnxeba: 012 685 0900  
Ifeksi: (012) 665 1886  
I-imeyile: Kim.d@iliso.com

**Mnu Joseph Masilela**  
Umnxeba: (012) 685 0900  
Ifeksi: (012) 665 1886  
I-imeyile: joseph.m@iliso.com

**ISICELO SOKUGUNYAZIZWA KOKUSINGQONGILEYO  
SOLWAKHIWO OLUKHOYO SEPROJEKTHI YAMANZI YASEMZIMVUBU ECETYWAYO**

**UXWEBHU OLUQULETHE ULWAZI LWANGAPHAMBILI**

DEA Reference- Idami lamanzi: 14/12/16/3/3/2/677, Umbane: 14/12/16/3/3/2/678, ne limigaqo:  
14/12/16/3/3/1/1169

Nceda ugcwalise uze uyibuyisele ku-Kim Dalhuijsen okanye ku-Joseph Masilela e-ILISO Consulting (Pty) Ltd

ILISO Consulting (Pty) Ltd  
PO Box 68735  
Highveld  
0169

Tel: (012) 685 0900  
Fax: 012 665 1886  
E-mail: kim.d@iliso.com  
Joseph.m@iliso.com

Isibuliso		Igama Lokuqala	
Oonobumba Bamagama		Ifani	
Inkampani			
Idilesi yePosi		Ikhawudi yePosi	
Idilesi Yesitalato			
Inombolo Yomnxeba		Inombolo Yefeksi	
Inombolo Yeselula			
I-imeyile			

Izimvo: (Ungasebenzisa elinye iphepha xa kukho imfuneko)

Sicela uchaze ukubandakanyeka kwakho kule projekthi (ukutsho oko, Ungumnikazi-mhlaba Ochaphazelekayo, iiKhontraktha ezikhangela ithuba lomsebenzi, njalo njalo)

.....

.....

.....

Le miba ilandelayo kumele iqwalaselwe ngelixa lolu Vavanyo Lwempembelelo KokusiNgqongileyo.

.....

.....

.....

Sicela ufake lo/aba mntu/bantu kuluhlu lwakho lokuthunyelelwa iposi.

.....

.....

.....

**Siyabulela kakhulu ngokuthatha kwakho inxaxheba!**