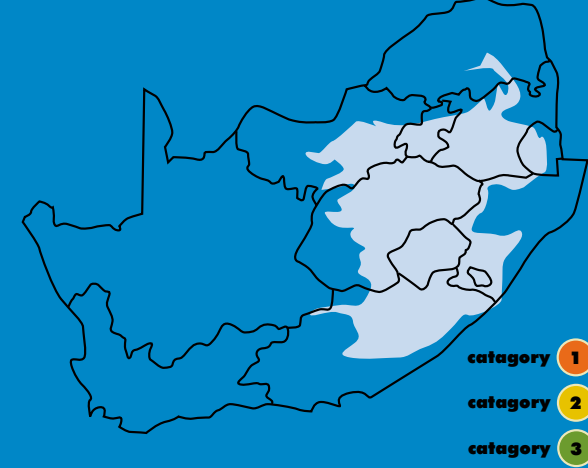


# GRASSLAND REGION



## Regional map



Poisonous



Irritant



Herbicide registered



Biological control



### *Azolla filiculoides*



**Red water fern**  
**Rooiwatervaring**



**Alternatives**  
*Azolla pinnata*

### *Campuloclinium macrocephalum*



**Pom pom weed**  
**Pom-pom bossie**

**Alternatives**  
*Vernonia* sp. - Vernonia  
*Helichrysum* sp. - Everlasting / Sewejaartjie

### *Nassella trichotoma*



**Nassella tussock**  
**Nassella-polgras**



**Alternatives**  
*Themeda triandra* - rooigras  
*Melinis repens* subsp. - Natal red top / Natal-rooiplum

### *Robinia pseudoacacia*

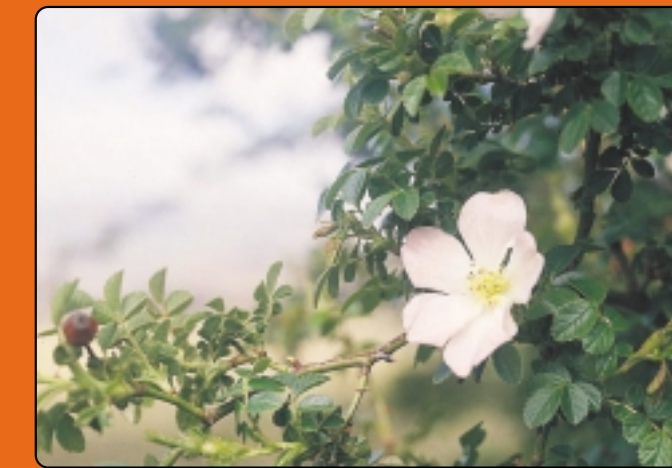


**Black locust**  
**Wit akasia**



**Alternatives**  
*Colpurnea aurea* - Common Laburnum / Geelkeur  
*Leucosidea sericea* - Oldwood / Ouhout

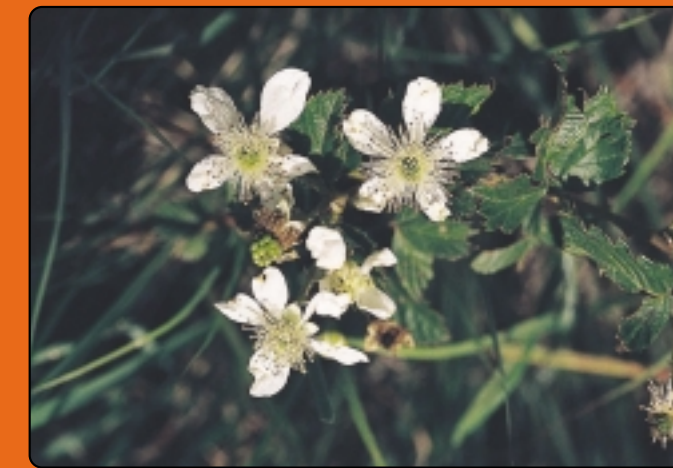
### *Rosa rubiginosa*



**Eglantine, sweetbriar**  
**Wilderoos**

**Alternatives**  
*Hypericum revolutum* - Curry Bush / Kerriebos  
*Scutia myrtina* - Cat-Thorn / Droog-my-keel

### *Rubus cuneifolius*



**American bramble**  
**Amerikaanse sandbraam**



**Alternatives**  
*Rubus ludwigii* - Silverbramble / Wildebraam  
*Rubus rigidus* - Wild bramble / Braambos

### *Rubus fruticosus*



**European Blackberry**  
**Braam**



**Alternatives**  
*Rubus ludwigii* - Silverbramble / Wildebraam  
*Rubus rigidus* - Wild bramble / Braambos

### *Ulex europaeus*



**European gorse**  
**Gaspeldoring**



**Alternatives**  
*Euryops pectinatus* - Golden Daisy Bush / Gouernargrietjie  
*Phymaspermum* spp. - Geelblombos

### *Cirsium vulgare*



**Spear or Scotch thistle**  
**Speer- of Skotse dissel**



**Alternatives**  
*Ceratotheca triloba* - Wild Foxglove / Wildevingerhoedjie  
*Vernonia* - Vernonia

### *Cortaderia jubata*



**Purple pampas, jubata grass**  
**Pampasgras**



**Alternatives**  
*Setaria megaphylla* - Broad-leaved bristle

### *Eichhornia crassipes*



**Water hyacinth**  
**Waterhiasint**



**Alternatives**  
*Nymphaea nouchalli* - Blue Waterlily / Blouwaterlelie

### *Acacia dealbata*



**Silver wattle**  
**Silwerwattel**



**Alternatives**  
*Rhus lancea* - Karee / Karee

### *Acacia decurrens*



**Green wattle**  
**Groenwattel**



**Alternatives**  
*Acacia sieberiana* var. *woodii* - Paperbark Thorn / Papierbas  
*Acacia karoo* - Sweet Thorn / Soetdoring

### *Acacia mearnsii*



**Black wattle**  
**Swartwattel**



**Alternatives**  
*Rhus lancea* - Karee / Karee

### *Gleditsia triacanthos*



**Honey locust**  
**Soetpeulboom**



**Alternatives**  
*Acacia karoo* - Sweet Thorn / Soetdoring  
*Acacia caffra* - Common Hook Thorn / Gewone Hoakdoring

### *Populus X canescens*



**Grey poplar**  
**Vaalpopulier**



**Alternatives**  
*Leucosidea sericea* - Oldwood / Ouhout  
*Combretum erthrophylum* - River Bushwillow / Rivervaderlandswilg

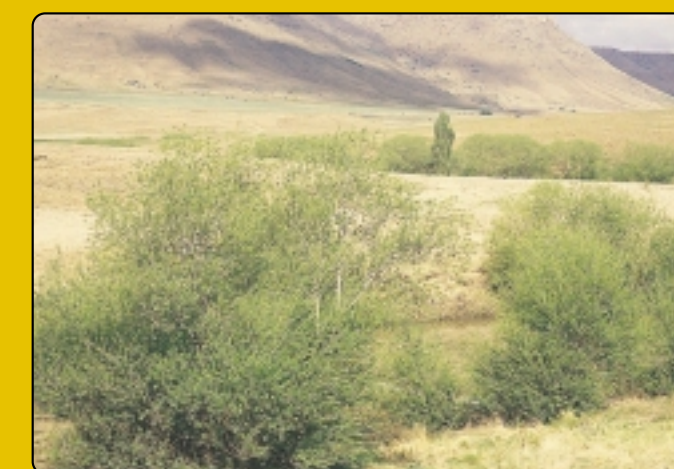
### *Salix babylonica*



**Weeping willow**  
**Treurwilger**

**Alternatives**  
*Combretum erthrophylum* - River Bushwillow / Rivervaderlandswilg  
*Ficus* spp. - Fig family / Wilde vy

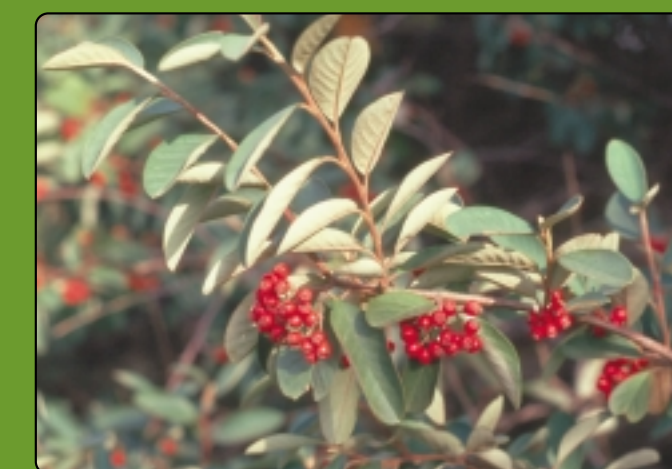
### *Salix fragilis*



**Crack of brittle willow**  
**Lekkerbreekwilger**

**Alternatives**  
*Salix mucronata* - Natal Willow / Natalwilger  
*Salix subserrata* - Salsaf Willow / Salsaf Wilger

### *Cotoneaster franchettii* & *c. pannosus*



**Orange and Silver cotoneasters**  
**Oranje cotoneaster**  
**Silwer dwergmispel**



**Alternatives**  
*Cassinopsis ilicifolia* - Lemon Thorn / Lemoenliedoring  
*Rhamnus prinoides* - Dogwood / Blinkbaor

### *Pyracantha angustifolia*



**Yellow firethorn**  
**Geelbranddoring**



**Alternatives**  
*Davaylia caffra* - Kei-apple / Kei-appel  
*Cassinopsis ilicifolia* - Lemon Thorn / Lemoenliedoring